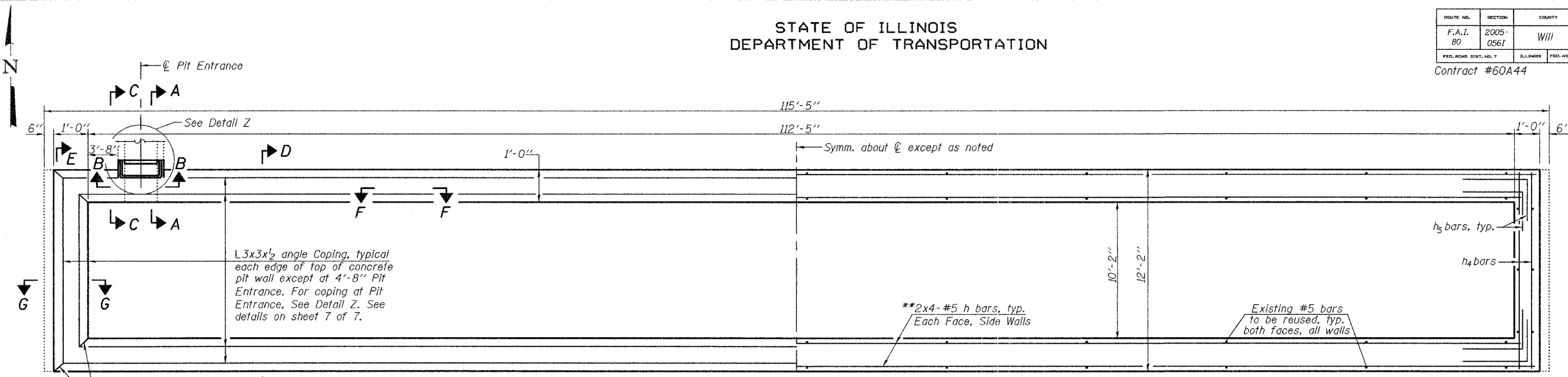


STATE OF ILLINOIS  
DEPARTMENT OF TRANSPORTATION

ROUTE NO.	SECTION	COUNTY	POST MILES	SHEET	SHEET NO. 6 7 SHEETS
F.A.I. 80	2005-0561	Will	11	20	
FED. ROAD DIST. NO. 7	ILLINOIS	FED. AID PROJECT-			

Contract #60A44

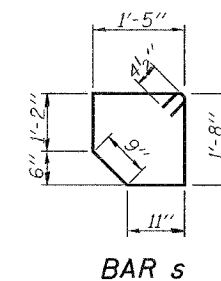


SHOWING ANGLE COPING

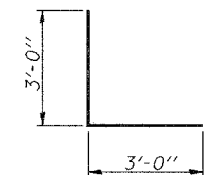
PLAN CONCRETE PIT

(Platform decks, existing steel, existing concrete pedestals and approach slab not shown) (W.B. shown & E.B. similar)

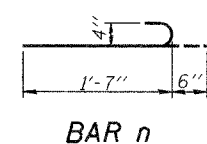
SHOWING REINFORCEMENT



BAR s

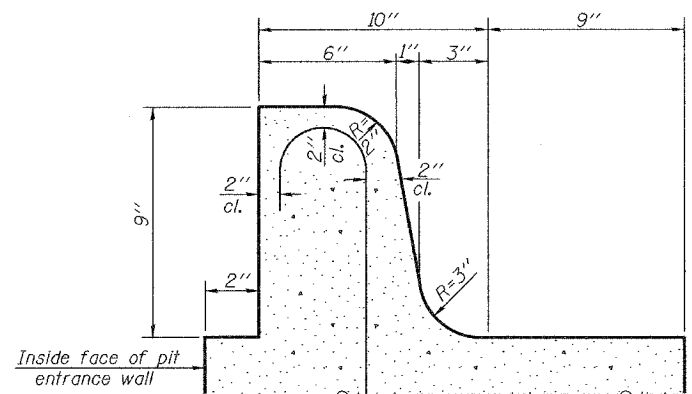


BAR h5

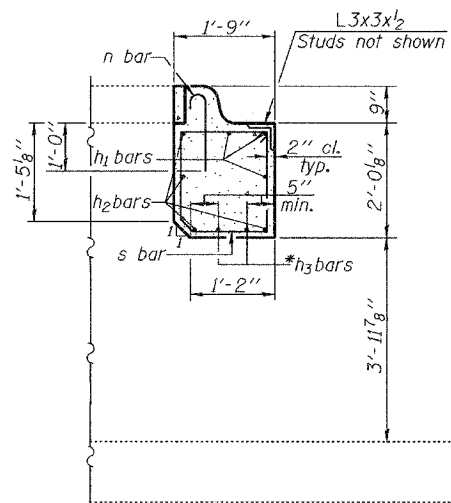


BAR n

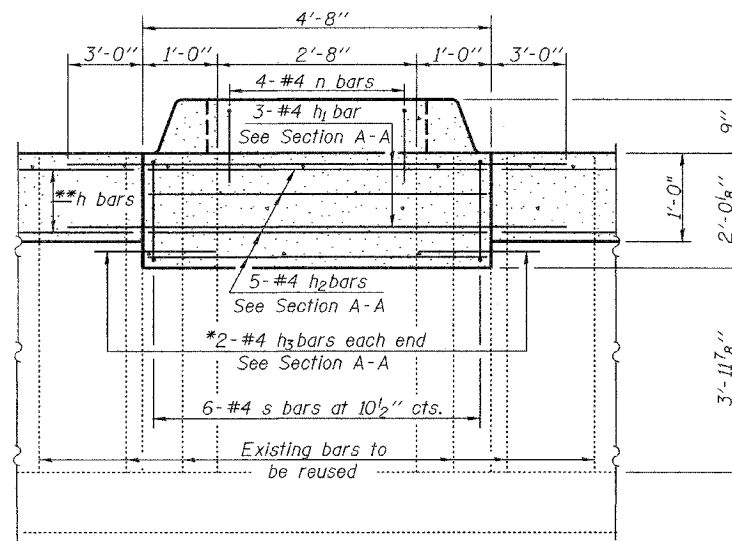
MIN. BAR LAP  
#5 Bar = 3'-0"



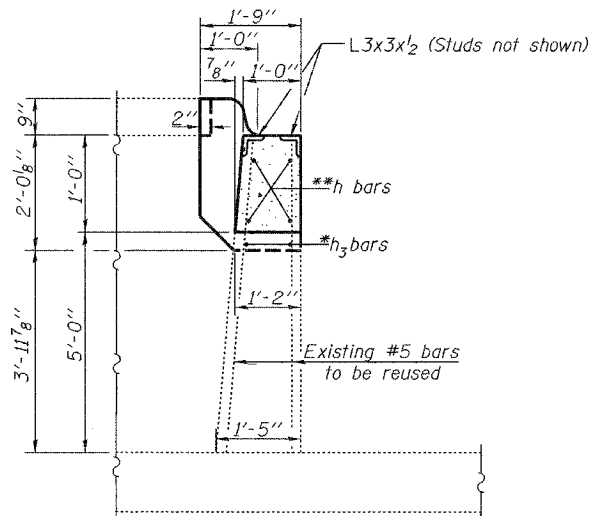
CURB DETAIL  
(For Pit Entrance)



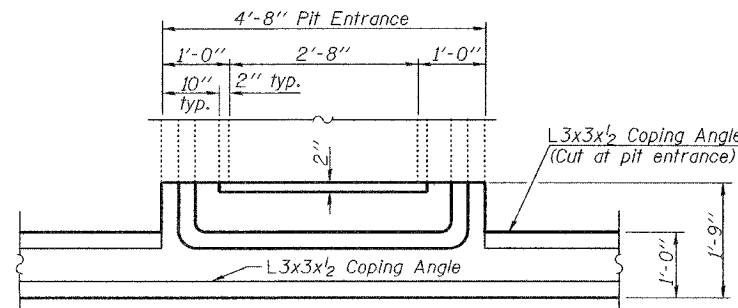
SECTION A-A



SECTION B-B  
(Coping angles not shown)



SECTION C-C



DETAIL Z-PLAN VIEW  
AT PIT ENTRANCE  
(Reinforcement not shown)

BILL OF MATERIAL  
FOR BOTH W.B. & E.B.

Bar	No.	Size	Length	Shape
h	64	#5	29'-10"	—
h1	6	#4	10'-8"	—
h2	10	#4	4'-4"	—
h3	8	#4	2'-5"	—
h4	16	#5	11'-10"	—
h5	32	#5	6'-0"	L
n	8	#4	2'-1"	U
s	12	#4	6'-8"	□
Reinforcement Bars		Pound	2540	
Conc. Structures		Cu. Yd.	20.1	

Bars indicated thus 2x4-#5 etc. indicates 2 lines of bars with 4 lengths per line.

CONCRETE PIT DETAILS  
FRANKFORT WEIGH STATIONS  
F.A.I. ROUTE 80 SECTION 2005-0561  
WILL COUNTY  
STA. 1212+05.06 (W.B.) &  
STA. 989+44.94 (E.B.)

Notes: See sheet 7 of 7 for Sections D-D, E-E, F-F and G-G.  
Existing reinforcement extending into removed areas shall be cleaned, straightened and incorporated into the new construction. Cost included with Concrete Removal.  
\*Epoxy grout h3 bars in 9" min. drilled holes according to Section 584 of the Standard Specifications.  
\*\*Cut h bar reinforcement in the wall at pit entrance. See Section B-B.

DESIGNED	Stephen M. Ryan
CHECKED	Phillip R. Litchfield
DRAWN	R. Sommer
CHECKED	SMR/PRL/SEM

EXAMINED	Thomas J. Domagala	January 20, 2006
PASSED	Ralph E. Anderson	