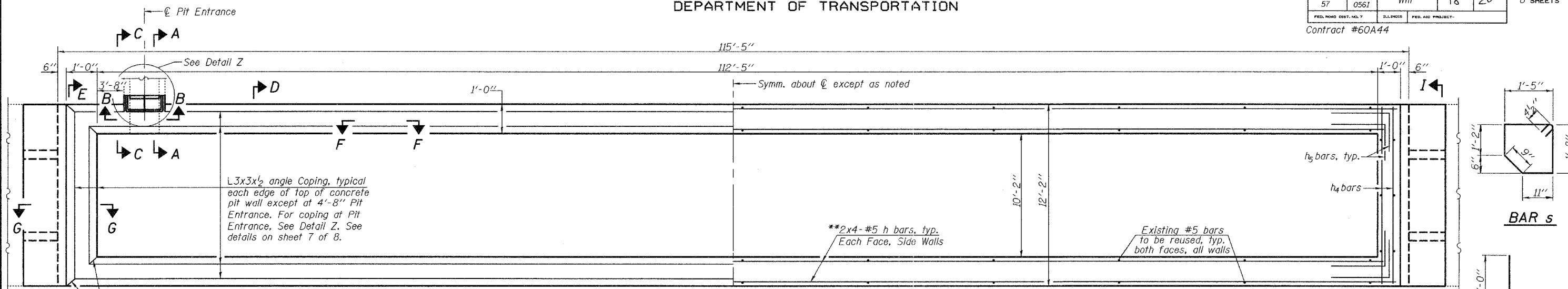


STATE OF ILLINOIS
DEPARTMENT OF TRANSPORTATION

ROUTE NO.	SECTION	COUNTY	DATE	SHEET	SHEET NO. 6 8 SHEETS
F.A.I. 57	2005- 0561	Will	18	20	
FED. ROAD DIST. NO. 7	ILLINOIS	FED. AID PROJECT-			

Contract #60A44



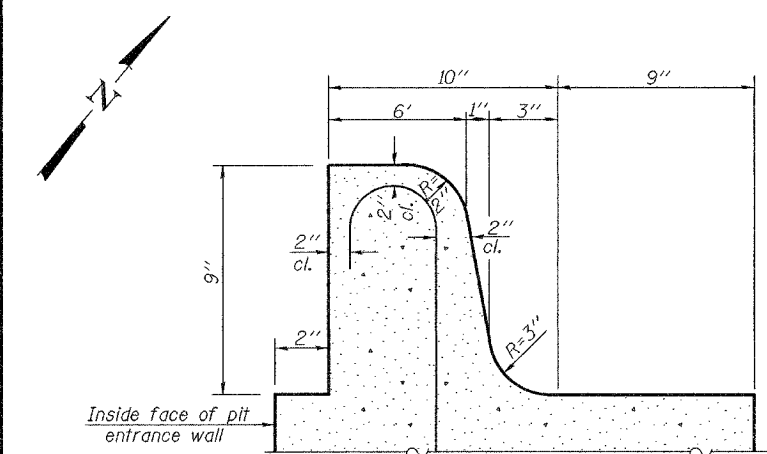
PLAN CONCRETE PIT

(Platform decks, existing steel and existing concrete pedestals not shown) (S.B. shown & N.B. similar)

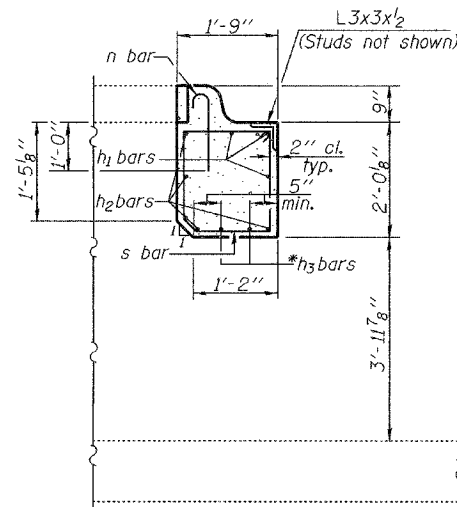
SHOWING REINFORCEMENT

Use 45° miter at coping intersections, typ.

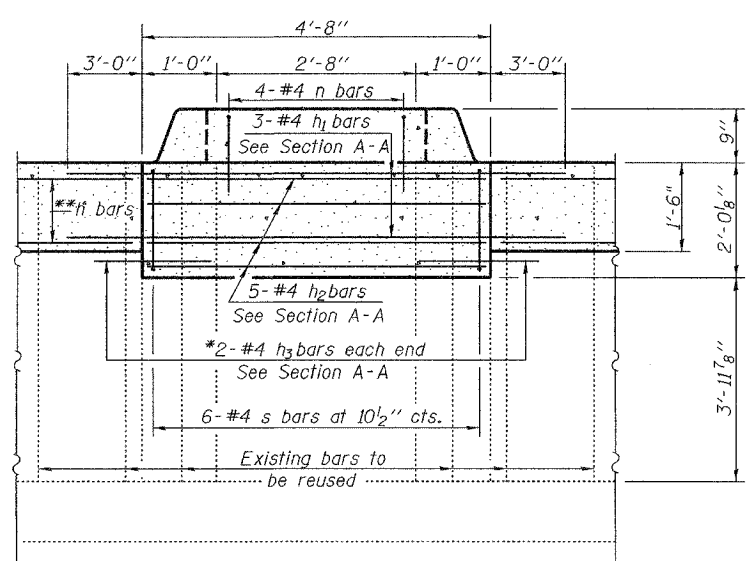
SHOWING ANGLE COPING



CURB DETAIL
(For Pit Entrance)

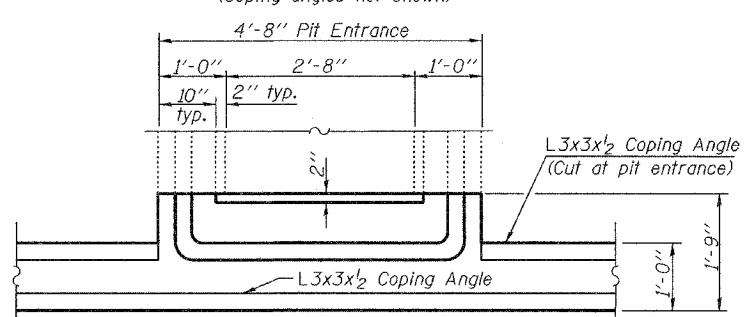


SECTION A-A



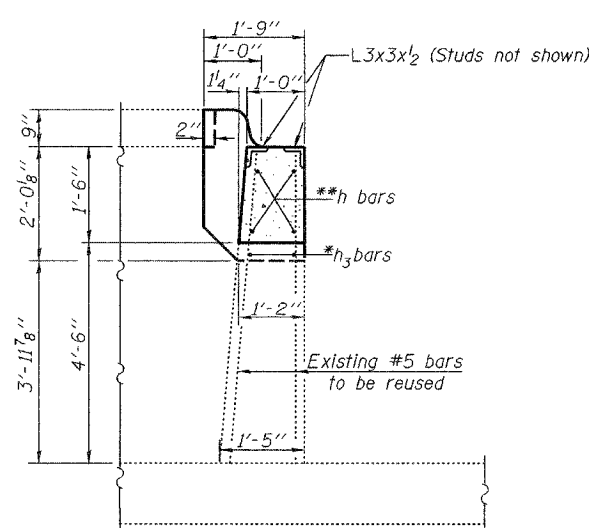
SECTION B-B

(Coping angles not shown)



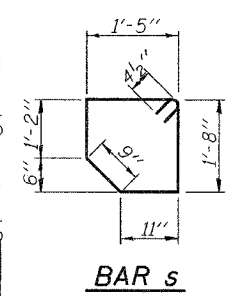
DETAIL Z-PLAN VIEW AT PIT ENTRANCE

(Reinforcement not shown)

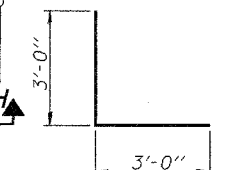


SECTION C-C

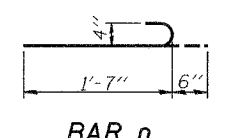
MIN. BAR LAP
#5 Bar = 3'-0"



BAR s



BAR h5



BAR n

BILL OF MATERIAL FOR BOTH N.B. & S.B.

Bar	No.	Size	Length	Shape
h	64	#5	29'-10"	—
h1	6	#4	10'-8"	—
h2	10	#4	4'-4"	—
h3	8	#4	2'-5"	—
h4	16	#5	11'-10"	—
h5	32	#5	6'-0"	L
b2	8	#5	11'-10"	—
n	8	#4	2'-1"	U
s	12	#4	6'-8"	U
Reinforcement Bars		Pound	2640	
Conc. Structures		Cu. Yd.	35.2	

Bars indicated thus 2x4-#5 etc. indicates 2 lines of bars with 4 lengths per line.

Notes: See sheets 7 & 8 of 8 for Sections D-D, E-E, F-F, G-G, I-I and View H-H. Existing reinforcement extending into removed areas shall be cleaned, straightened and incorporated into the new construction. Cost included with Concrete Removal.

*Epoxy grout h3 bars in 9" min. drilled holes according to Section 584 of the Standard Specifications.
**Cut h bar reinforcement in the wall at pit entrance. See Section B-B.

DESIGNED	Stephen M. Ryan
CHECKED	Phillip R. Litchfield
DRAWN	R. Sommer
CHECKED	SMR/PRL/SEM

January 20, 2006
EXAMINED *Thomas J. Demagabek*
PASSED *Ralph E. Anderson*
ENGINEER OF BRIDGES AND STRUCTURES

CONCRETE PIT DETAILS
PEOTONE WEIGH STATIONS
F.A.I. ROUTE 57 SECTION 2005-0561
WILL COUNTY
STA. 1091+65.06 (S.B.) &
STA. 1073+09.94 (N.B.)