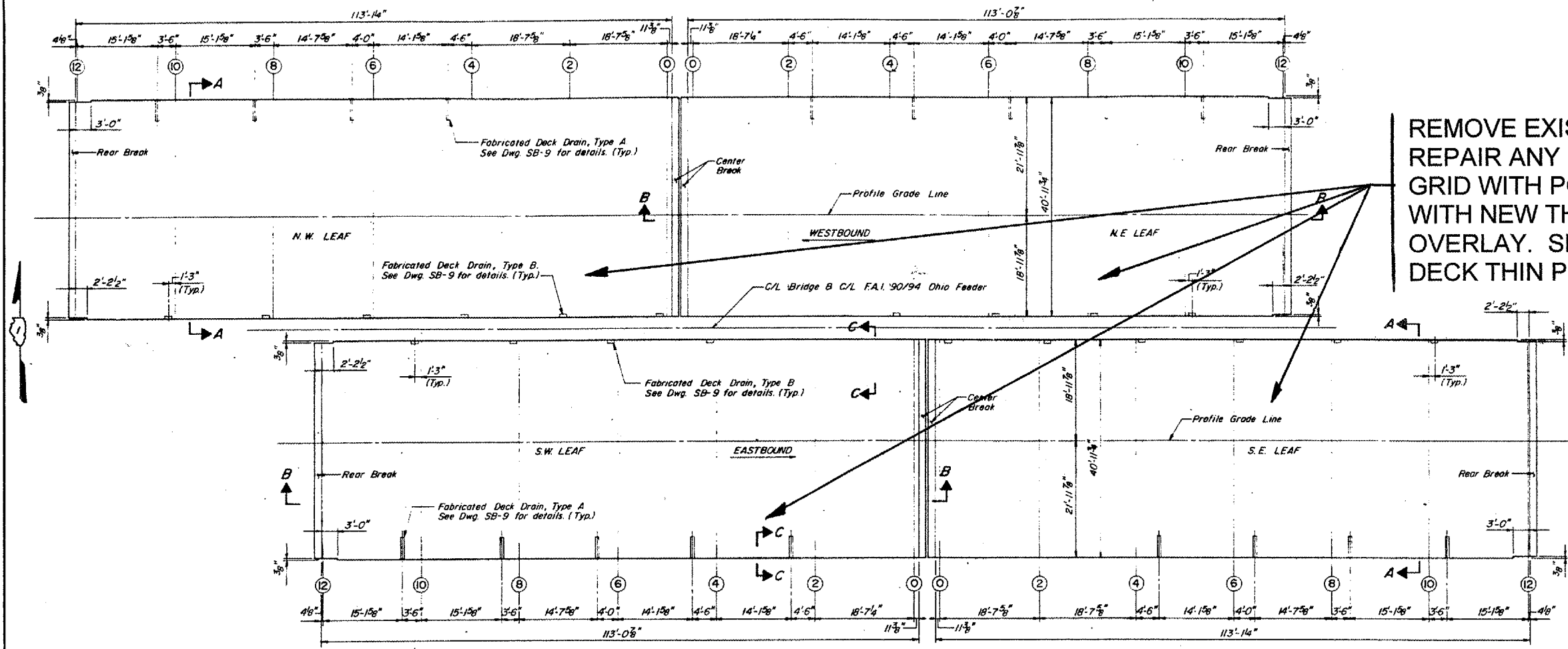


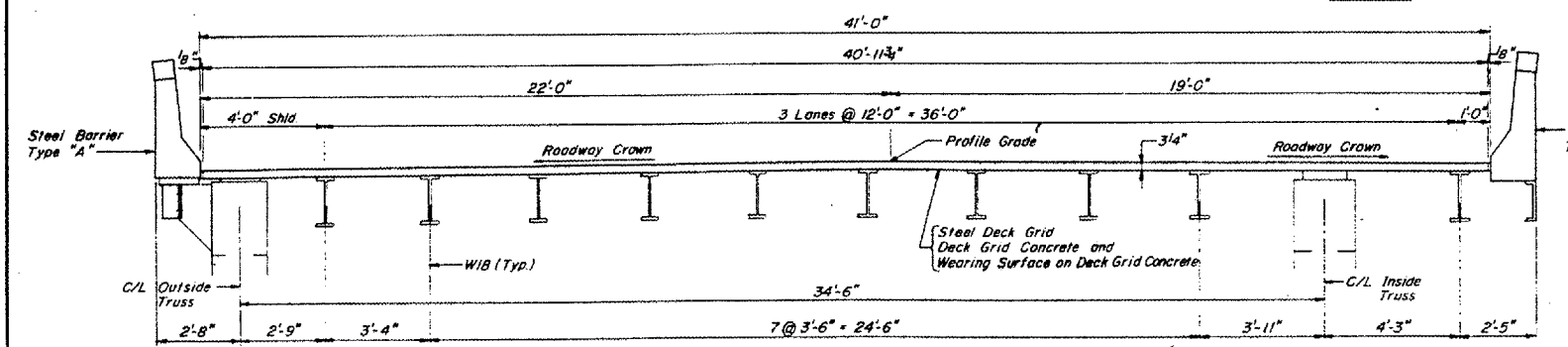
ROUTE	SECTION	COUNTY	TOTAL SHEETS	SHEET NUMBER
FAP 383	2005-028 I	COOK	16	5

CONTRACT 62965
Sheet 1 of 2



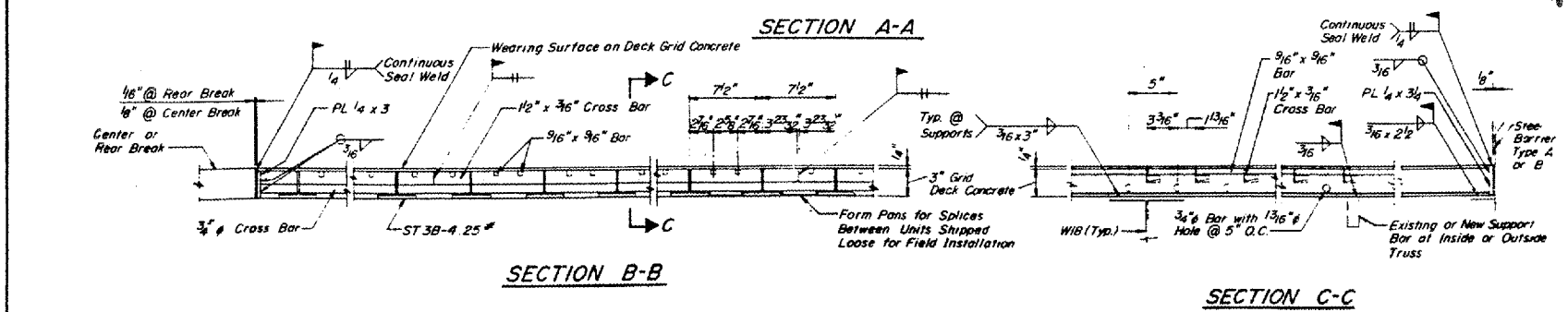
REMOVE EXISTING POLYMER OVERLAY, REPAIR ANY DAMAGED CONCRETE IN THE GRID WITH POLYMER CONCRETE, REPLACE WITH NEW THIN POLYMER CONCRETE OVERLAY. SEE SPECIAL PROVISION "BRIDGE DECK THIN POLYMER OVERLAY (SPECIAL)."

PLAN



ITEM	UNIT	QUANTITY
BRIDGE DECK OVERLAY REMOVAL	SQ YD	2060
POLYMER CONCRETE	CU FT	10.0
BRIDGE DECK THIN POLYMER OVERLAY, 3/8"	SQ YD	2060

POLYMER CONCRETE TO BE USED FOR DECK REPAIR.



ILLINOIS DEPARTMENT OF TRANSPORTATION
LOC 1 (SN 016-0202)
OVER N. BRANCH CHICAGO RIVER
DECK REPAIR DETAILS