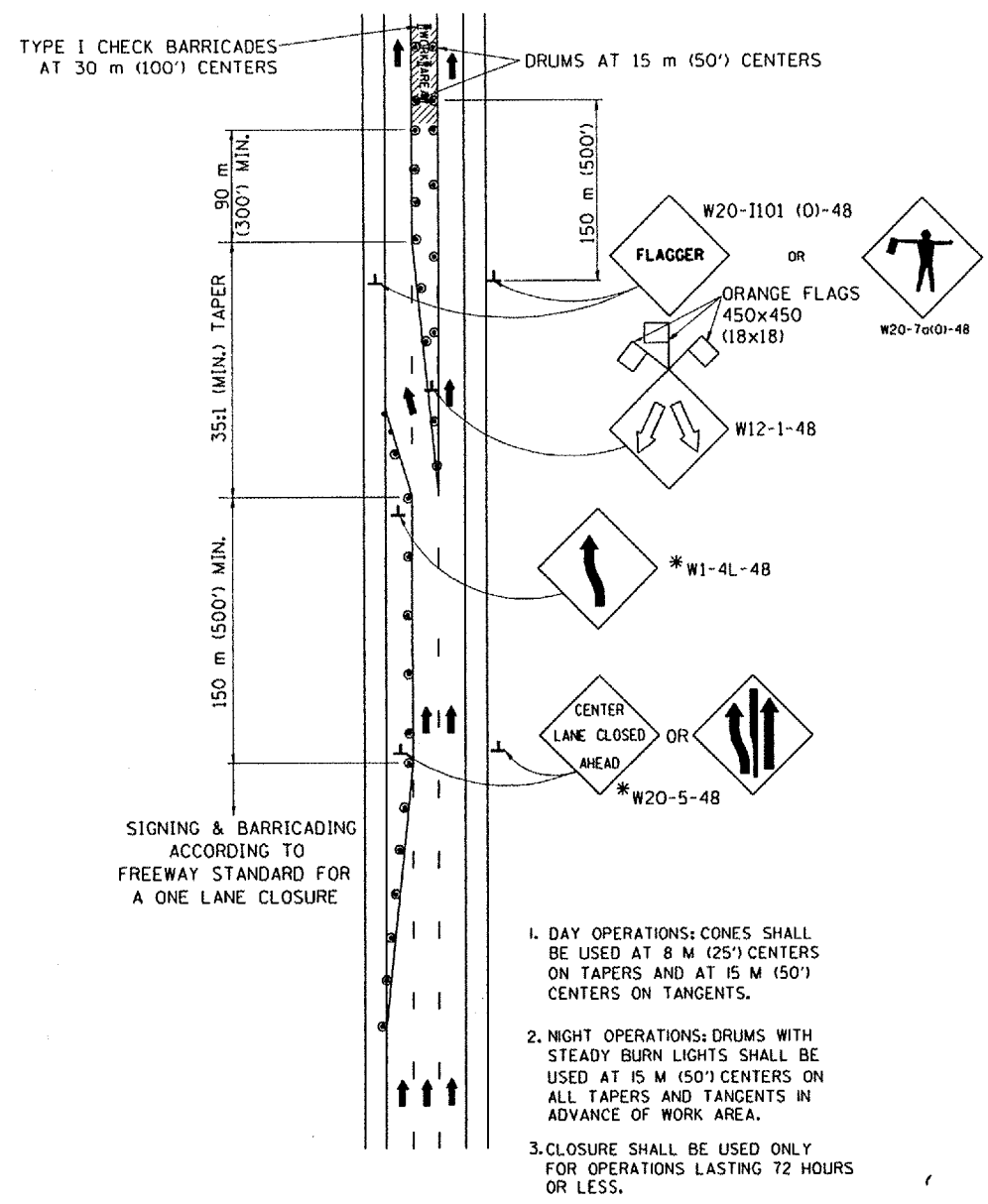


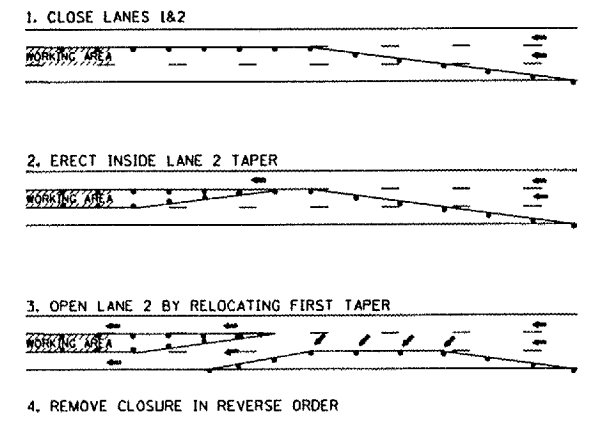
62965

P.L. FILE	SECTION	COUNTY	TOTAL SHEETS	SHEET
			16	16
STA.	TO STA.			
P.L. ROAD DIST. NO. 1		ILLINOIS	P.L. JOB PROJECT	

CENTER LANE CLOSURE

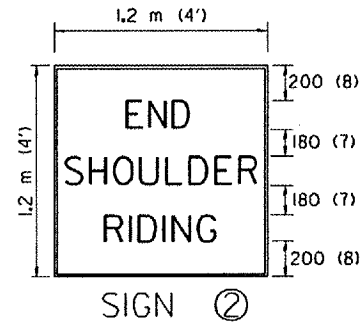
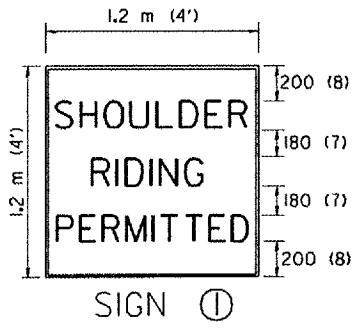
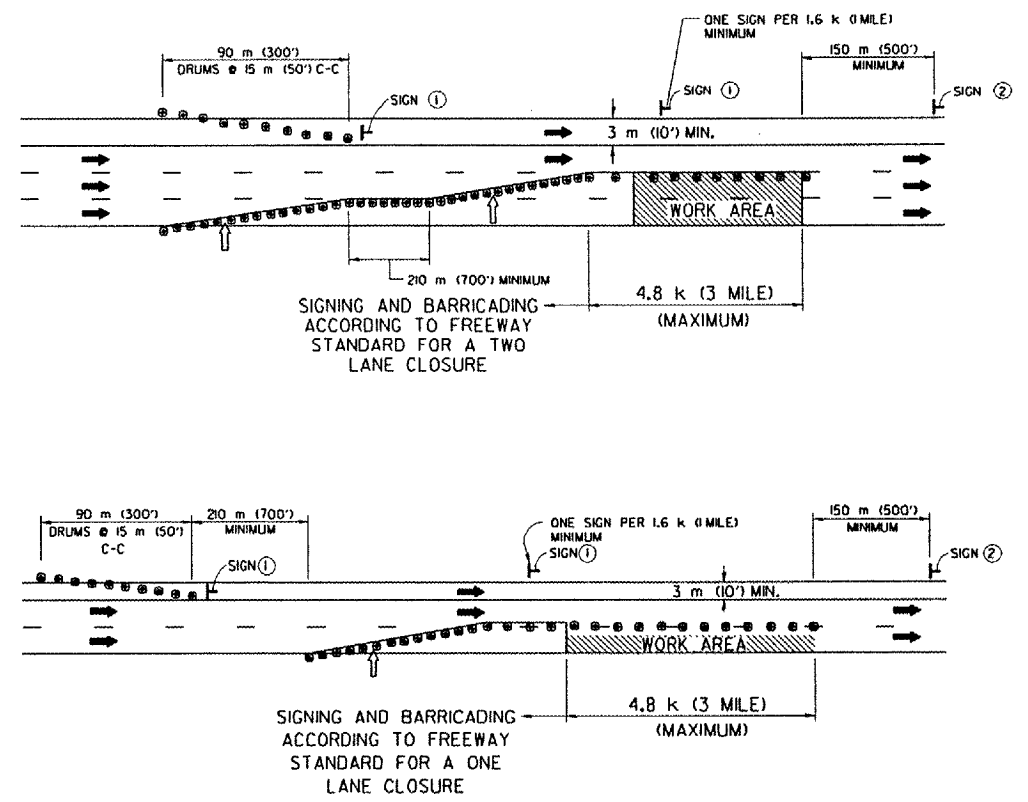


INSTALLATION SEQUENCE



SHOULDER LANE

NOTE: CLOSURE SHALL BE USED ONLY FOR OPERATIONS LASTING 72 HOURS OR LESS.



150 (6) SERIES "C" LEGEND
BLACK LEGEND
WHITE REFLECT. BACKGROUND
25 (1) BORDER

SYMBOLS

- ↑ ARROWBOARD
 - ▨ WORK AREA
 - ◇ SIGN WITH 450x450 (18x18) ORANGE FLAGS ATTACHED *
 - ┌ SIGN ON PORTABLE OR PERMANENT SUPPORT *
 - CONES
 - DRUM WITH MONO-DIRECTIONAL STEADY BURNING LIGHT
- * ALL SIGNS SHALL BE MOUNTED AT A MINIMUM HEIGHT OF 1.5 m (5').

REVISIONS	
NAME	DATE
PRIOR DETAILS ON TC-9 - JAF	4/03

ALL DIMENSIONS ARE IN MILLIMETERS (INCHES) UNLESS OTHERWISE SHOWN

ILLINOIS DEPARTMENT OF TRANSPORTATION
TRAFFIC CONTROL DETAILS
FOR FREEWAY
CENTER LANE CLOSURE
SHOULDER LANE

SCALE: NONE
DATE: 05/06/2003

DRAWN BY R.H.
CHECKED BY

TC-25
REVISION DATE: N/A