

ROUTE	SECTION	COUNTY	TOTAL SHEETS	SHEET NUMBER
FAP 383	2005-028 I	COOK	16	1

FOR INDEX OF SHEETS SEE SHEET 2

STATE OF ILLINOIS
DEPARTMENT OF TRANSPORTATION
DIVISION OF HIGHWAYS
DISTRICT ONE

CONTRACT 62965
D-91-218-05

IMPROVEMENTS ARE
LOCATED IN
THE CITY OF CHICAGO

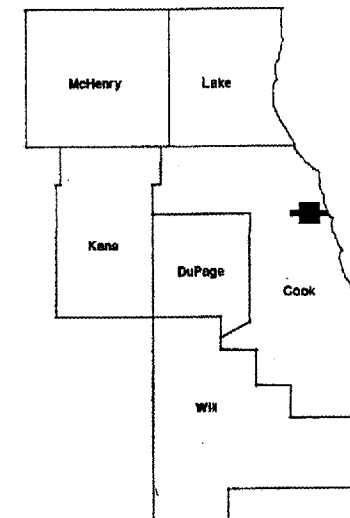
PROPOSED HIGHWAY PLANS
FAP 383: OHIO STREET FEEDER OVER
KINGSBURY ST., NORTH BRANCH CHICAGO RIVER & UPRR
SECTION 2005-028 I
BRIDGE REPAIR
COOK COUNTY
C-91-218-05

- 1) SN 016-0202 BASCULE BRIDGE OVER N BRANCH CHICAGO RIVER
- 2) SN 016-1053 EAST APPROACH BRIDGE OVER KINGSBURY ST
- 3) SN 016-1061 WEST APPROACH BRIDGE OVER UPRR

TRAFFIC DATA

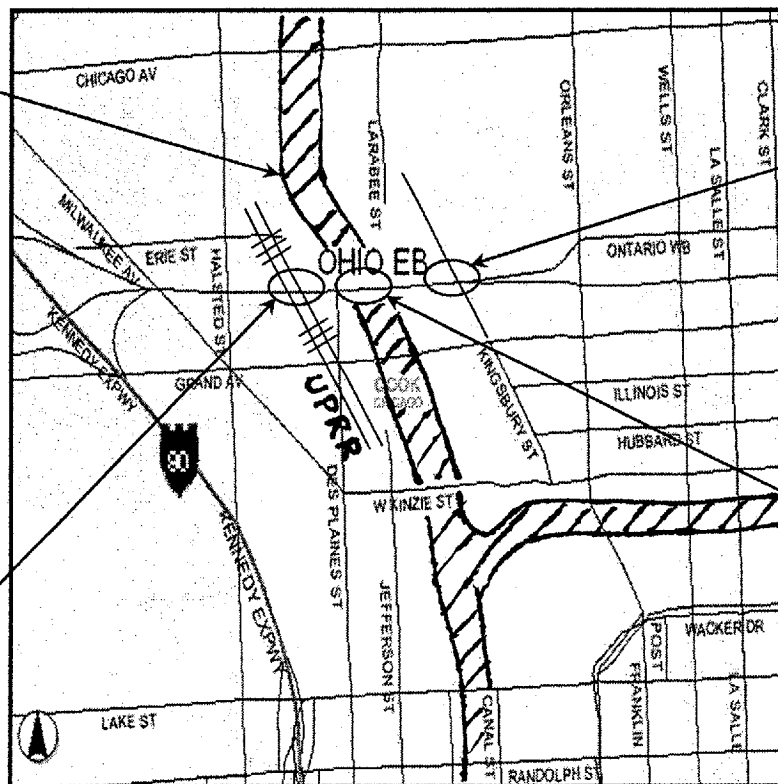
2000 ADT = 97,109

POSTED SPEED LIMIT = 55 MPH



LOCATION OF IMPROVEMENT INDICATED THUS:

N. BRANCH
CHICAGO RIVER



LOCATION 2
SN 016-1053

LOCATION 1
SN 016-0202

LOCATION 3
SN 016-1061

STATE OF ILLINOIS
DEPARTMENT OF TRANSPORTATION
DIVISION OF HIGHWAYS
SUBMITTED: DEC 22 2005
Diane M. O'Keefe
DEPUTY DIRECTOR OF HIGHWAY, REGION ENGINEER
February 3, 2006
Mike Hine
ENGINEER OF DESIGN AND ENVIRONMENT
February 3, 2006
Milton R. Sees, P.E.
DIRECTOR, DIVISION OF HIGHWAYS

PRINTED BY THE AUTHORITY
OF THE STATE OF ILLINOIS

C.U.A.N.: CHICAGO UTILITY ALERT
NETWORK
(312) 744-7000

CONTRACT 62965

ALN LNS / R. BOKU (047) 703-4178

ROUTE	SECTION	COUNTY	TOTAL SHEETS	SHEET NUMBER
FAP 383	2005-028 I	COOK	16	2

CONTRACT 62965

INDEX OF SHEETS

LIST OF STATE STANDARD

1	TITLE SHEET
2	INDEX OF SHEETS AND LIST OF STATE STANDARDS
3	GENERAL NOTES
4	SUMMARY OF QUANTITIES
5-6	LOC 1: SN 016-0202 (N. BRANCH CHICAGO RIVER) BRIDGE REPAIR
7-9	LOC 2: SN 016-1053 (E. APP. OVER KINGSBURY ST) BRIDGE REPAIR
10-12	LOC 3: SN 016-1061 (W. APP. OVER UPRR) BRIDGE REPAIR
13	TRAFFIC CONTROL AND PROTECTION FOR SIDE ROADS, INTERSECTIONS, AND DRIVEWAYS
14-15	MULTI-LANE FREEWAY PAVEMENT MARKING DETAILS
16	TRAFFIC CONTROL DETAILS FOR FREEWAY CENTER LANE CLOSURE AND SHOULDER LANE

<u>STANDARD</u>	<u>DESCRIPTION</u>
701400-02	APPROACH TO LANE CLOSURE, FREEWAY / EXPRESSWAY
701401-03	LANE CLOSURE, FREEWAY / EXPRESSWAY
701446	TWO LANE CLOSURE, FREEWAY / EXPRESSWAY
702001-05	TRAFFIC CONTROL DEVICES

ILLINOIS DEPARTMENT OF TRANSPORTATION

INDEX OF SHEETS
LIST OF STATE STANDARDS

ROUTE	SECTION	COUNTY	TOTAL SHEETS	SHEET NUMBER
FAP 383	2005-028 I	COOK	16	3

CONTRACT 62965

GENERAL NOTES

- BEFORE STARTING ANY EXCAVATION, THE CONTRACTOR SHALL CALL "C.U.A.N." (CHICAGO UTILITY ALERT NETWORK) AT (312) 744-7000 FIELD LOCATIONS OF BURIED ELECTRIC, TELEPHONE AND GAS UTILITIES. (48 HOUR NOTIFICATION IS REQUIRED)
 - THE CONTRACTOR SHALL COORDINATE CONSTRUCTION ACTIVITIES WITH UTILITY COMPANIES.
 - THE CONTRACTOR WILL NOT BE ALLOWED TO SET UP A YARD OR FIELD OFFICE ON STATE PROPERTY WITHOUT WRITTEN PERMISSION FROM THE DEPARTMENT.
 - THE CONTRACTOR SHALL OBTAIN COAST GUARD APPROVAL TO OCCUPY NAVIGABLE WATERS, IF REQUIRED, FOR THE PROPOSED WORK. A WORK PLAN SHALL BE PREPARED BY THE CONTRACTOR, REVIEWED AND APPROVED BY THE ENGINEER AND BE SUBMITTED BY THE ENGINEER TO THE COAST GUARD AT THE ADDRESS LISTED BELOW FOR APPORVAL.
- BRIDGE ADMINISTRATOR
US COAST GUARD
NINTH COAST GUARD DISTRICT
1240 E. NINTH ST
CLEVELAND, OH 44199-2060
- CONTRACTOR SHALL REMOVE OR FIRMLY ATTATCH ANY TRAFFIC CONTROL DEVICES ATTACHED FIRMLY TO THE BASCULE BRIDGE DECK THROUGHOUT THE DURATION OF THE PROJECT, SO THEY WILL NOT FALL OFF THE DECK WHEN THE BRIDGE SPANS ARE RAISED.
 - IT SHALL BE THE CONTRACTOR'S RESPONSIBILITY TO VERIFY ALL DIMENSION AND CONDITIONS EXISTING IN THE FIELD PRIOR TO CONSTRUCTION AND ORDERING OF MATERIALS.
 - THE CONTRACTOR SHALL CONTACT THE DISTRICT ONE TRAFFIC CONTROL SUPERVISOR AT (847) 705-4151 A MINIMUM OF 72 HOURS IN ADVANCE OF BEGINNING WORK.
- THESE PLANS HAVE BEEN PREPARED FROM NOTES RECEIVED FROM BRIDGE MAINTENANCE ENGINEERS.
 - THE CONTRACTOR SHALL LOCATE AND PROTECT ALL EXISTING ELECTRICAL CONDUIT AND LIGHTING FACILITIES IN AND AROUND THE VICINITY OF THE REPAIR LOCATIONS OF THE BRIDGE.
 - DO NOT SCALE PLANS FOR CONSTRUCTION DIMENSIONS

ILLINOIS DEPARTMENT OF TRANSPORTATION

GENERAL NOTES

ROUTE	SECTION	COUNTY	TOTAL SHEETS	SHEET NUMBER
FAP 383	2005-028 I	COOK	16	4

CONTRACT 62965

SUMMARY OF QUANTITIES			URBAN TOTAL QUANTITIES	CONSTRUCTION TYPE CODE -SFTY-2A		
CODE NO	ITEM	UNIT		COOK COUNTY		
				LOC 1 016-0202	LOC 2 016-1053	LOC 3 016-1061
44001480	BRIDGE DECK OVERLAY REMOVAL	SQ YD	2060.0	2060.00		
67000400	ENGINEER'S FIELD OFFICE, TYPE A	CAL MO	2.0	0.66	0.66	0.68
67100100	MOBILIZATION	L SUM	1	0.33	0.33	0.34
X7011015	TRAFFIC CONTROL AND PROTECTION (EXPRESSWAY)	L SUM	1	0.33	0.33	0.34
* 78008220	POLYUREA PAVEMENT MARKING, TYPE 1 LINE 5"	FOOT	150.0	150.0		
X0320887	POLYMER CONCRETE	CU FT	62.7	10.0	25.3	27.4
X0321744	SILICONE JOINT SEALER, 2"	FOOT	212.0		101.0	111.0
X0322944	BRIDGE DECK THIN POLYMER OVERLAY, 3/8"	SQ YD	2060.0	2060.0		
XX004814	SILICONE JOINT SEALER, 3"	FOOT	424.0		202.0	222.0
Z0048665	RAILROAD PROTECTIVE LIABILITY INSURANCE	L SUM	1			1

* SPECIALTY ITEMS

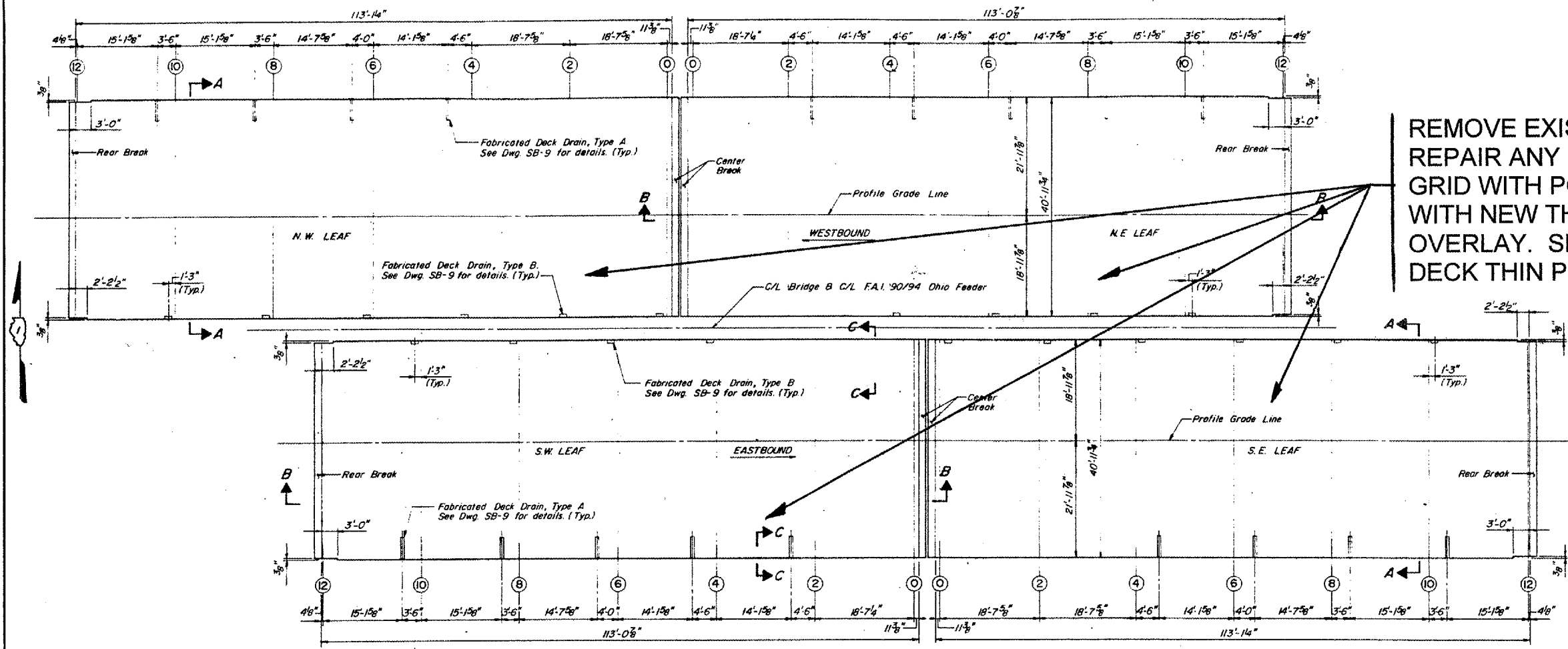
ILLINOIS DEPARTMENT OF TRANSPORTATION

SUMMARY OF QUANTITIES

Rev.

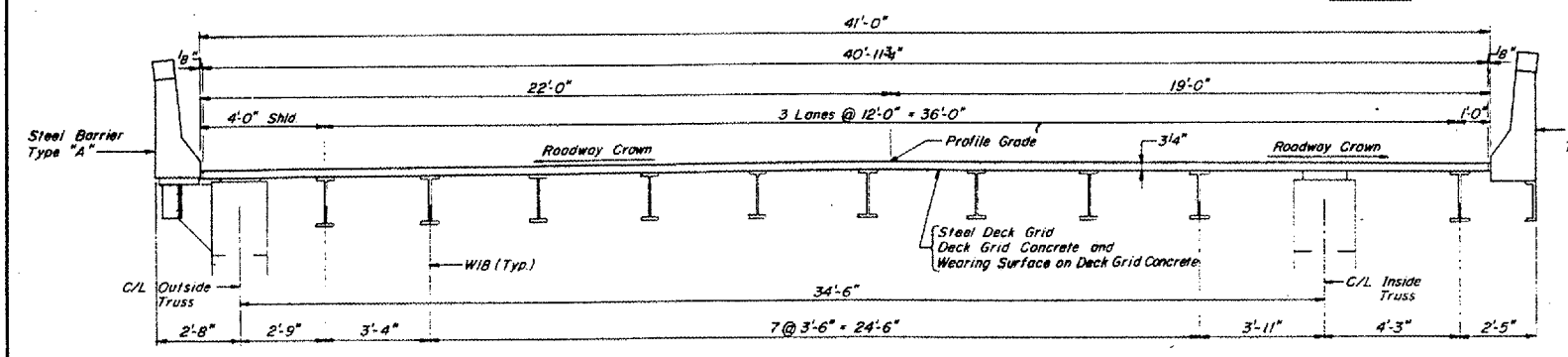
ROUTE	SECTION	COUNTY	TOTAL SHEETS	SHEET NUMBER
FAP 383	2005-028 I	COOK	16	5

CONTRACT 62965
Sheet 1 of 2



REMOVE EXISTING POLYMER OVERLAY, REPAIR ANY DAMAGED CONCRETE IN THE GRID WITH POLYMER CONCRETE, REPLACE WITH NEW THIN POLYMER CONCRETE OVERLAY. SEE SPECIAL PROVISION "BRIDGE DECK THIN POLYMER OVERLAY (SPECIAL)."

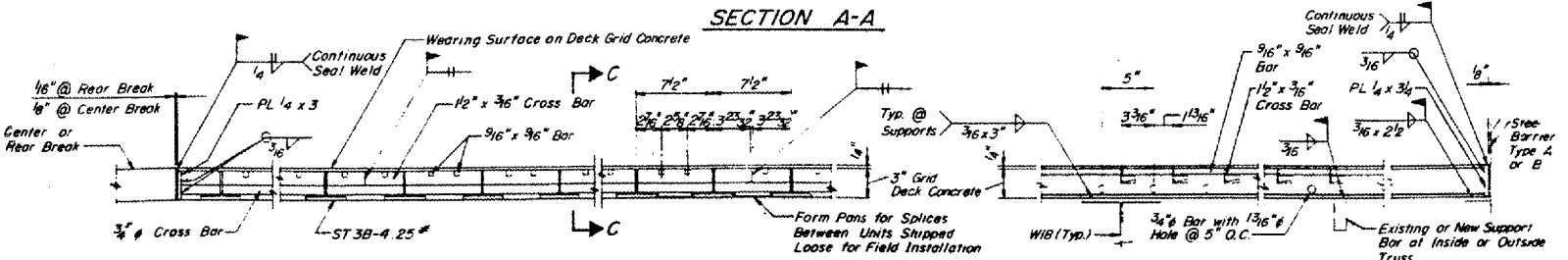
PLAN



ITEM	UNIT	QUANTITY
BRIDGE DECK OVERLAY REMOVAL	SQ YD	2060
POLYMER CONCRETE	CU FT	10.0
BRIDGE DECK THIN POLYMER OVERLAY, 3/8"	SQ YD	2060

POLYMER CONCRETE TO BE USED FOR DECK REPAIR.

SECTION A-A



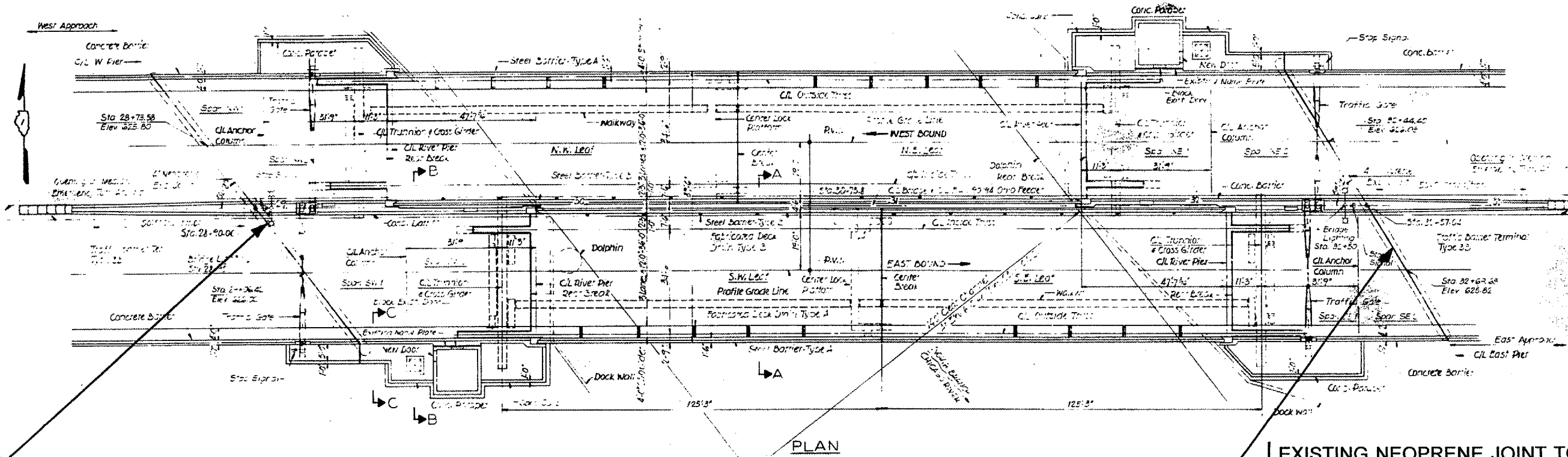
SECTION B-B

SECTION C-C

ILLINOIS DEPARTMENT OF TRANSPORTATION
LOC 1 (SN 016-0202)
OVER N. BRANCH CHICAGO RIVER
DECK REPAIR DETAILS

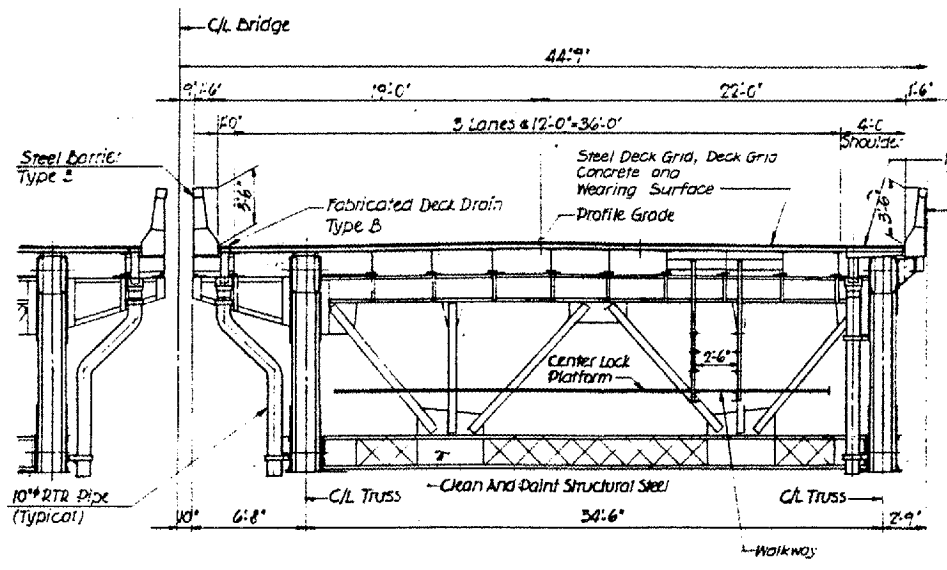
ROUTE	SECTION	COUNTY	TOTAL SHEETS	SHEET NUMBER
FAP 383	2005-028 I	COOK	16	6

CONTRACT 62965
Sheet 2 of 2

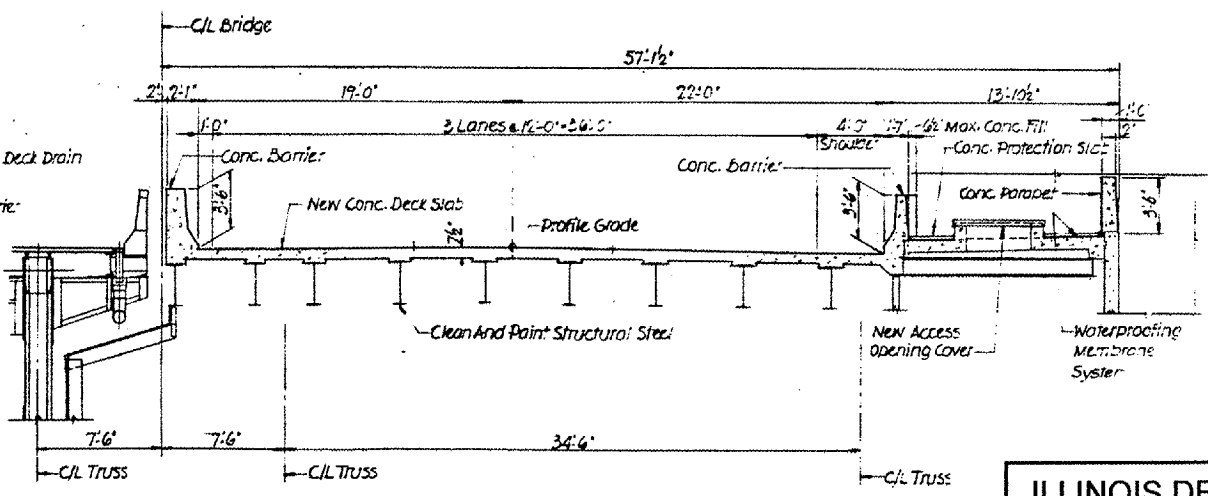


EXISTING NEOPRENE JOINT TO BE REPLACED. COST INCLUDED WITH LOC. 3-WEST APPROACH BRIDGE. SEE WEST PIER DETAILS IN SHEET 10.

EXISTING NEOPRENE JOINT TO BE REPLACED. COST INCLUDED WITH LOC. 2-EAST APPROACH BRIDGE. SEE EAST PIER DETAILS IN SHEET 7



SECTION A-A
Proposed



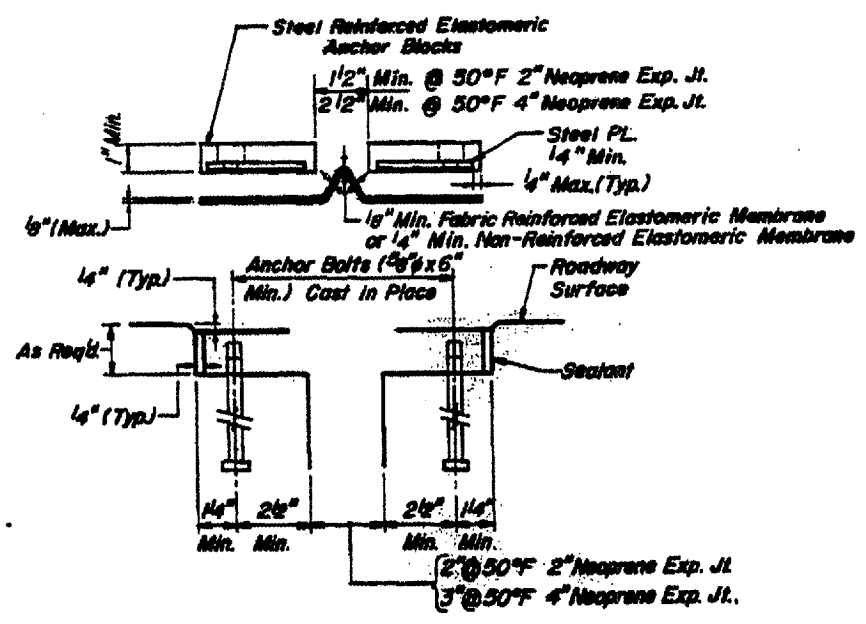
SECTION B-B
Proposed

Note: For location of Sections A-A, B-B, C-C, See Dwg. No. SB-1.

ILLINOIS DEPARTMENT OF TRANSPORTATION
LOC 1 (SN 016-0202)
OVER N. BRANCH CHICAGO RIVER
DECK REPAIR DETAILS

ROUTE	SECTION	COUNTY	TOTAL SHEETS	SHEET NUMBER
FAP 383	2005-028 I	COOK	16	7

CONTRACT 62965

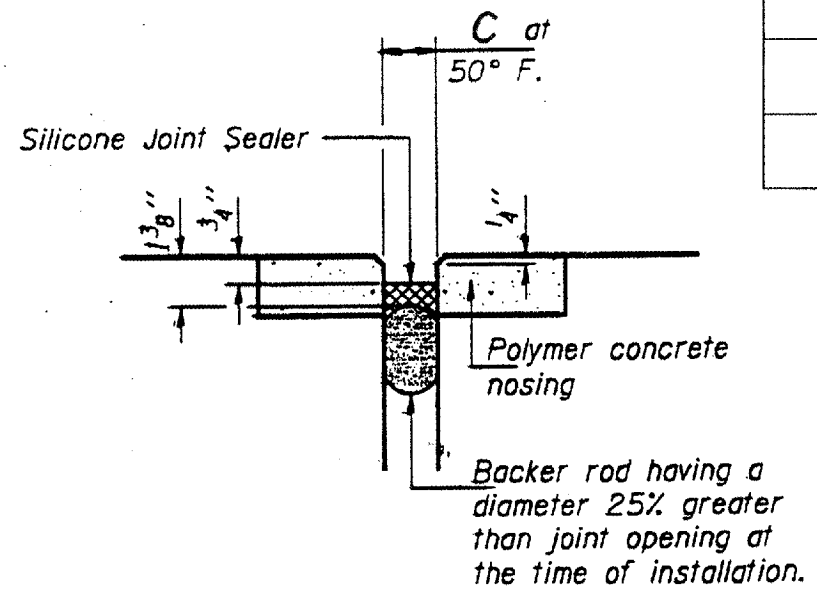


EXISTING

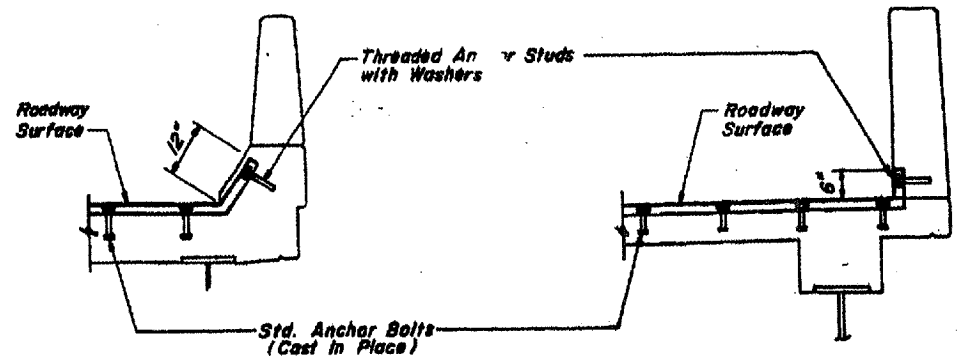
TOTAL BILL OF MATERIAL

ITEM	UNIT	QUANTITY
SILICONE JOINT SEALER, 2"	FOOT	101
SILICONE JOINT SEALER, 3"	FOOT	202
POLYMER CONCRETE	CU FT	25.3

LOCATION	C @ 50°F
E. PIER	3"
PIER #13	3"
E. ABUT	2"



PROPOSED

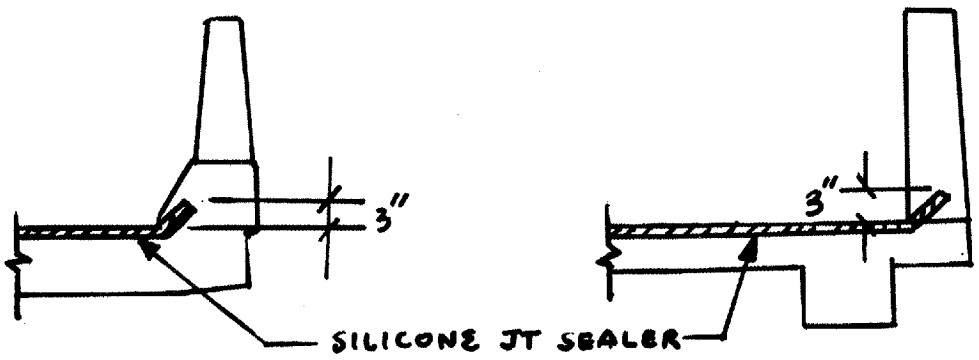


AT PARAPET

AT SIDEWALK PARAPET

NEOPRENE EXPANSION JOINT DETAILS
(AT EAST PIER, PIER 13 AND EAST ABUTMENT)

SEE PLAN @ E. PIER ON SHEET 6



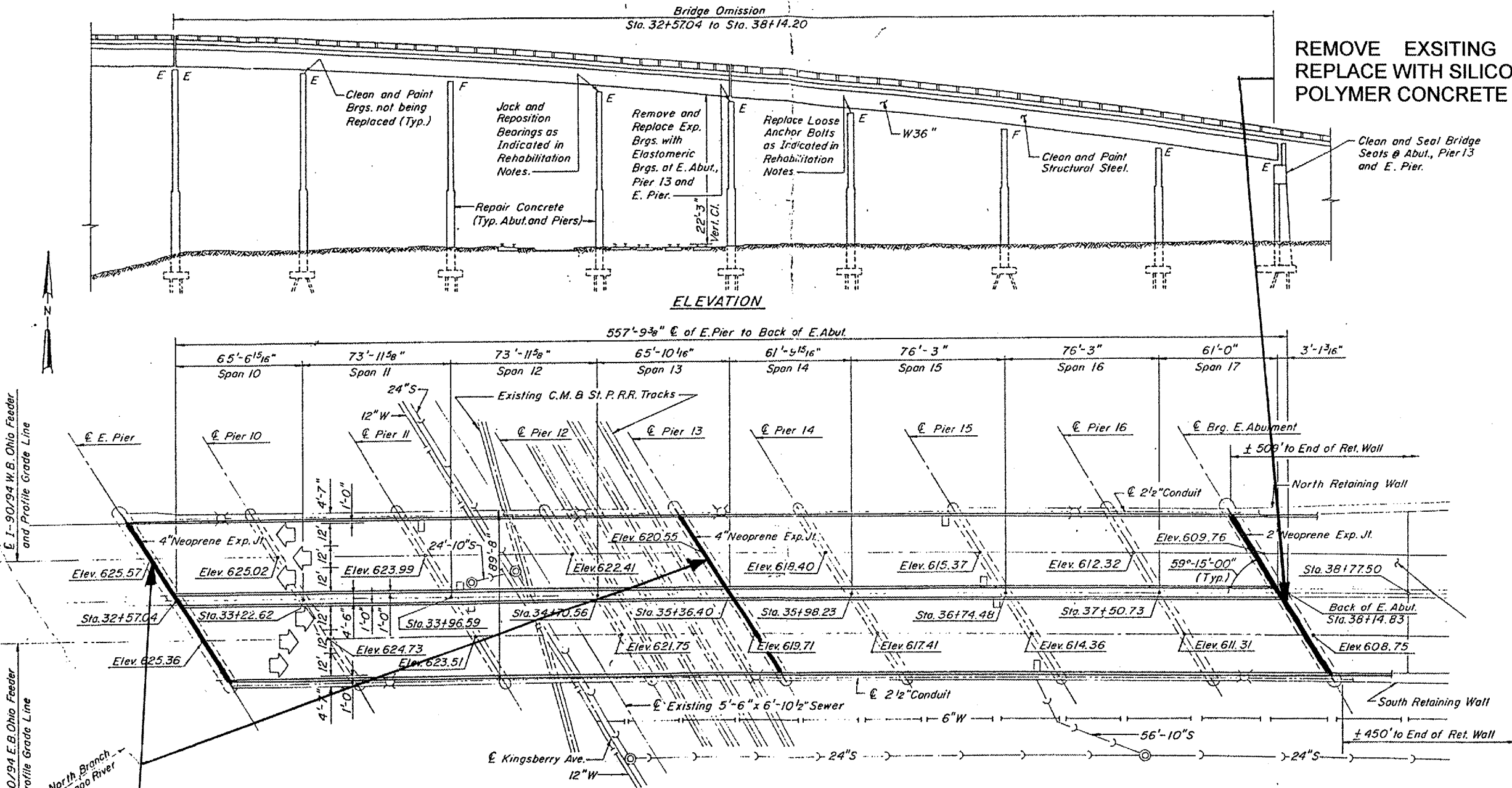
SILICONE JT SEALER

ILLINOIS DEPARTMENT OF TRANSPORTATION
LOC 2 (SN 016-1053)
OHIO ST EAST APPROACH
JOINT REPAIR DETAILS

ROUTE	SECTION	COUNTY	TOTAL SHEETS	SHEET NUMBER
FAP 383	2005-028 I	COOK	16	8

CONTRACT 62965

Sheet 2 of 3

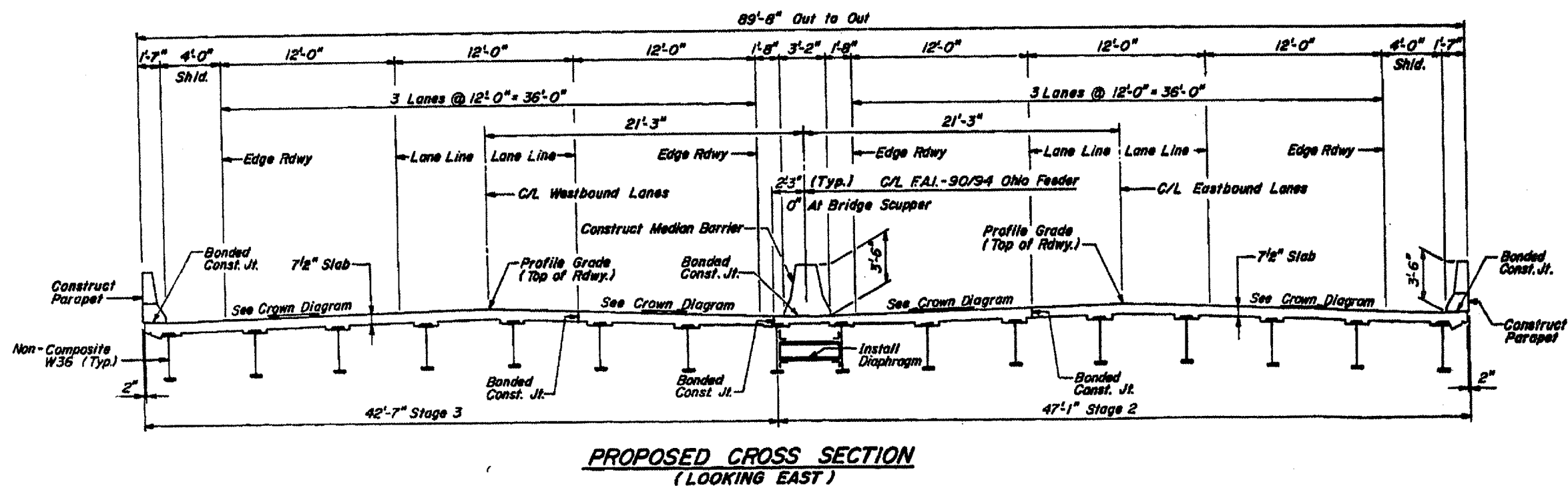


REMOVE EXSITING 4" NEOPRENE JOINT, REPLACE WITH SILICONE JOINT SEALER 3" AND POLYMER CONCRETE (EAST PIER AND PIER # 13). SEE ALSO E. PIER PLAN ON SHEET 6

ILLINOIS DEPARTMENT OF TRANSPORTATION
 LOC 2 (SN 016-1053)
 OHIO ST EAST APPROACH

ROUTE	SECTION	COUNTY	TOTAL SHEETS	SHEET NUMBER
FAP 383	2005-028 I	COOK	16	9

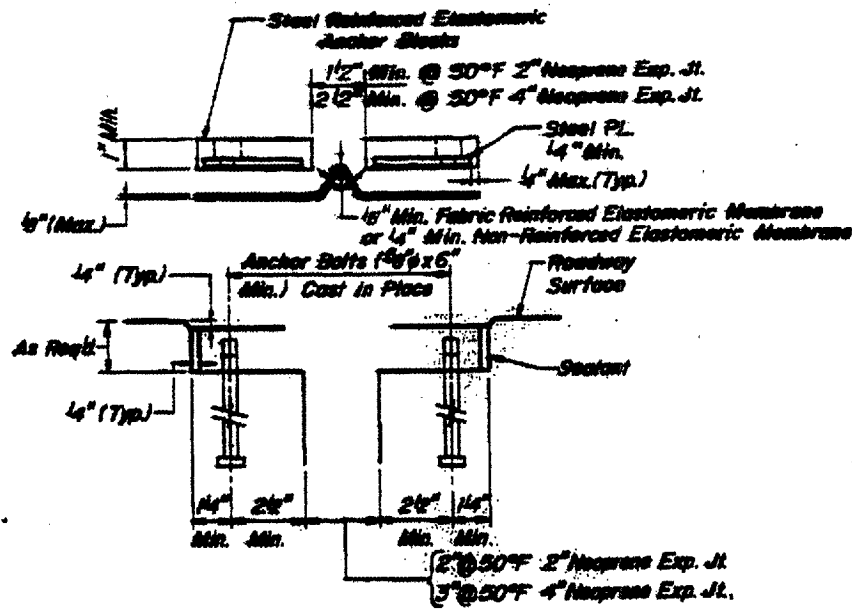
CONTRACT 62965
Sheet 3 of 3



ILLINOIS DEPARTMENT OF TRANSPORTATION
LOC 2 (SN 016-1053)
OHIO ST EAST APPROACH
FOR INFORMATION ONLY

ROUTE	SECTION	COUNTY	TOTAL SHEETS	SHEET NUMBER
FAP 383	2005-028 I	COOK	16	10

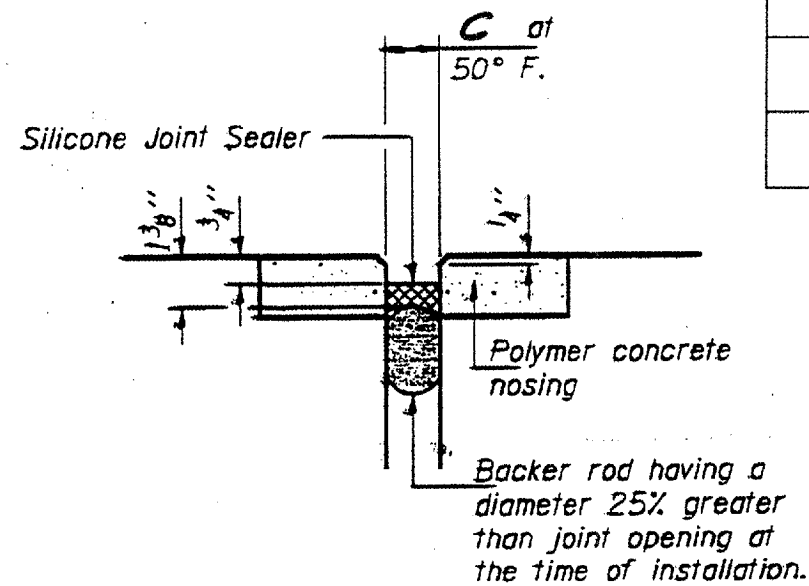
CONTRACT 62965
Sheet 1 of 3



EXISTING

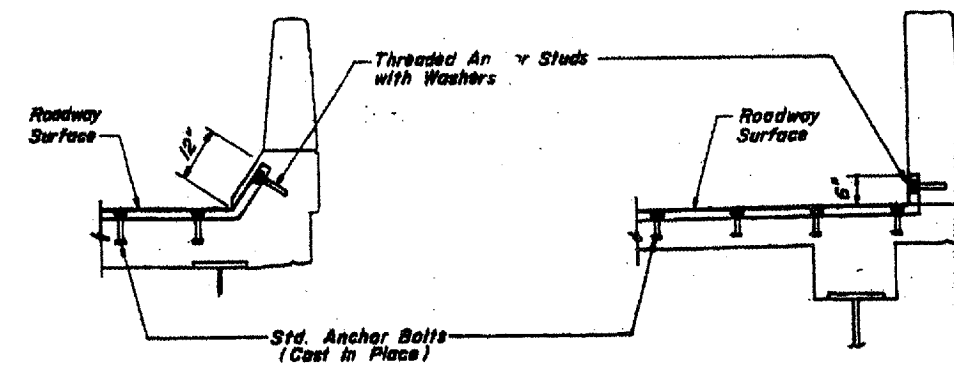
TOTAL BILL OF MATERIAL

ITEM	UNIT	QUANTITY
SILICONE JOINT SEALER, 2"	FOOT	111
SILICONE JOINT SEALER, 3"	FOOT	222
POLYMER CONCRETE	CU FT	27.4



PROPOSED

LOCATION	C @ 50°F
W. PIER	3"
PIER # 4	3"
W. ABUT	2"

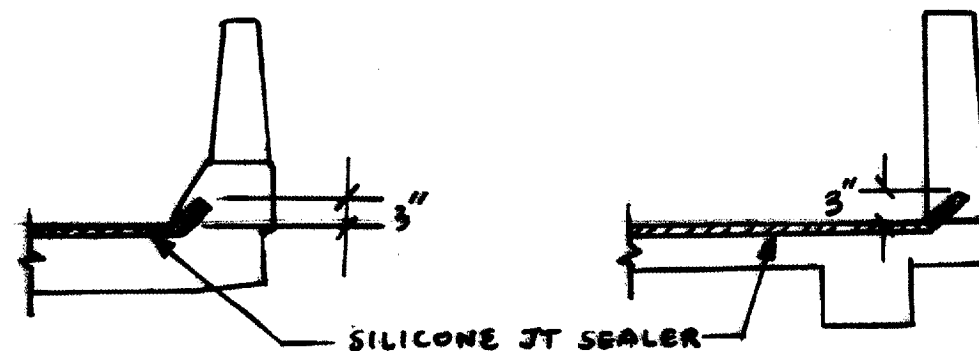


AT PARAPET

AT SIDEWALK PARAPET

**NEOPRENE EXPANSION JOINT DETAILS
(AT WEST PIER, PIER 4 AND WEST ABUTMENT)**

SEE PLAN @ W. PIER ON SHEET 6

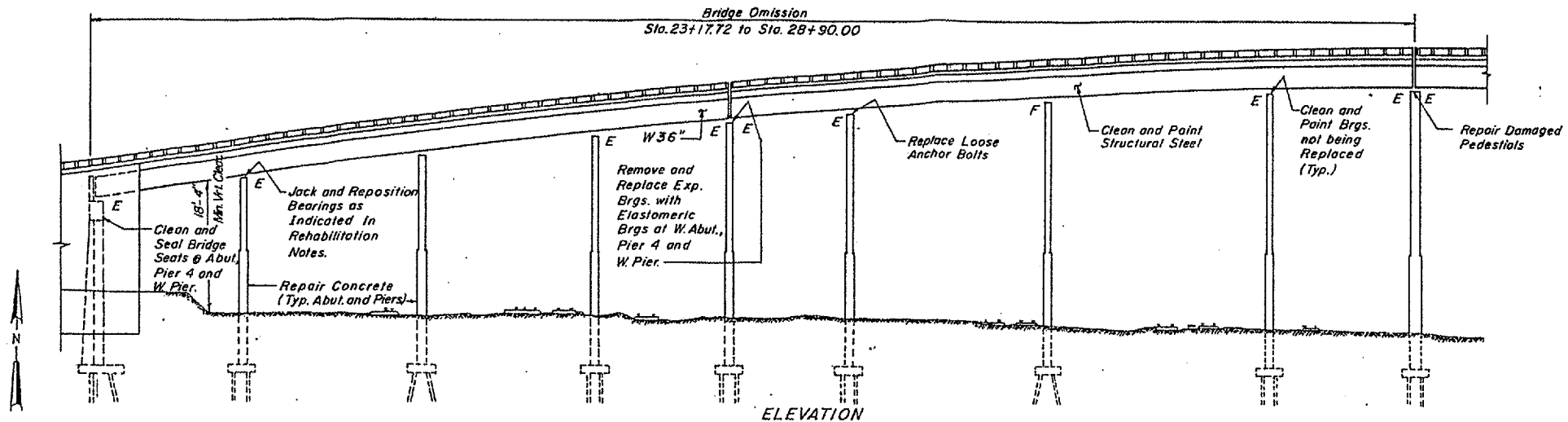


SILICONE JT SEALER

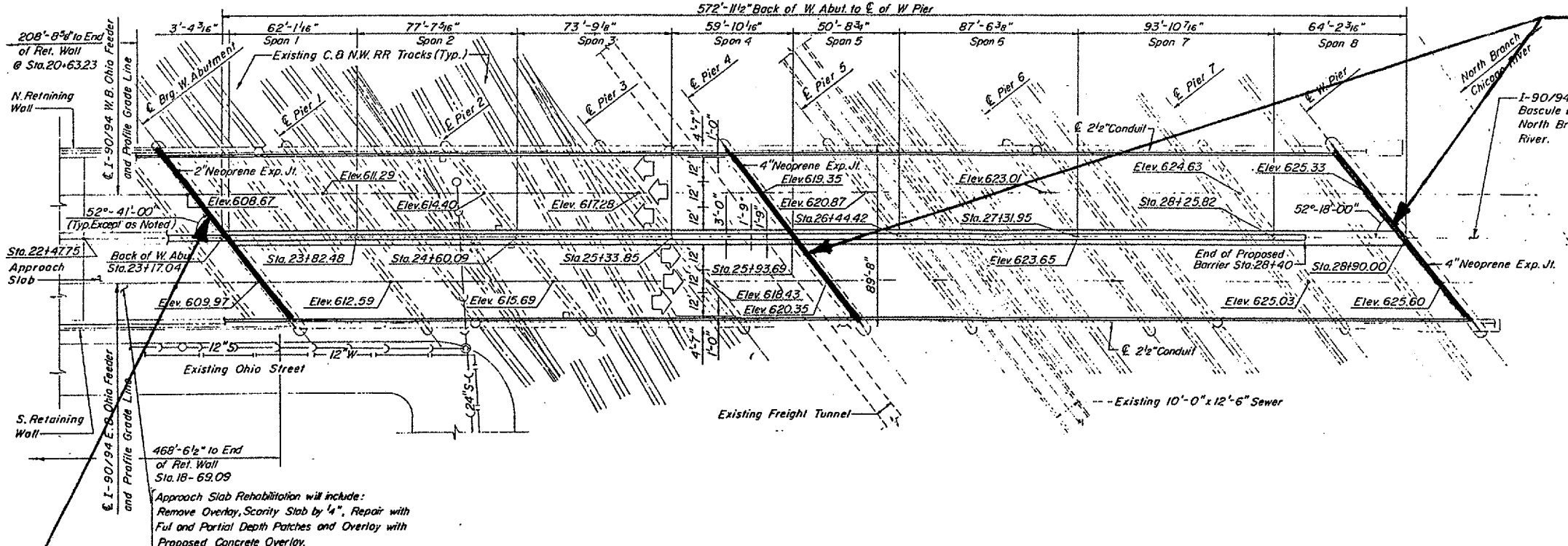
ILLINOIS DEPARTMENT OF TRANSPORTATION
LOC 3 (SN 016-0161)
OHIO ST EAST APPROACH
JOINT REPAIR DETAILS

ROUTE	SECTION	COUNTY	TOTAL SHEETS	SHEET NUMBER
FAP 383	2005-028 I	COOK	16	11

CONTRACT 62965
Sheet 2 of 3



ELEVATION



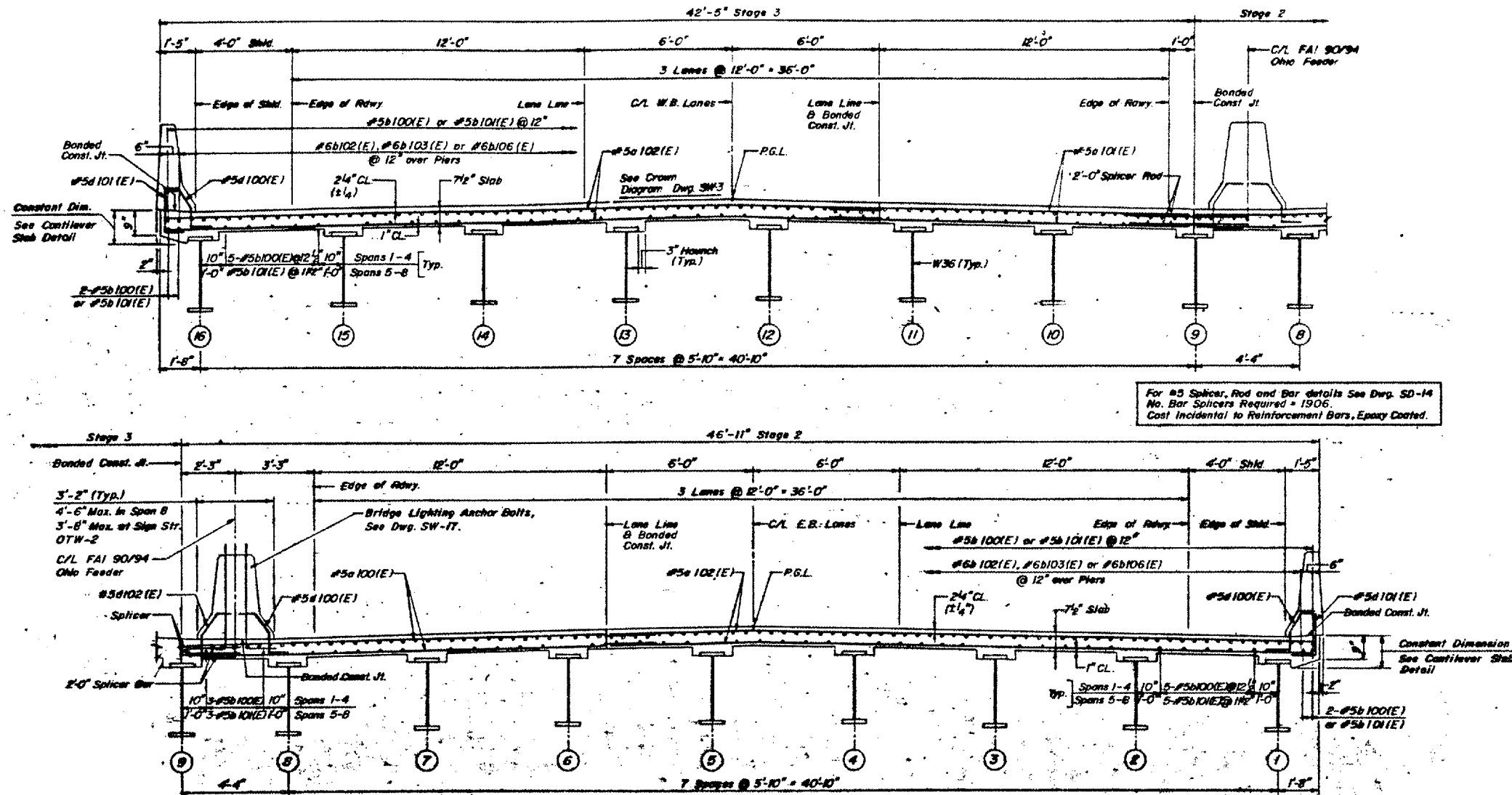
REMOVE EXSITING 4" NEOPRENE JOINT, REPLACE WITH SILICONE JOINT SEALER AND POLYMER CONCRETE (WEST ABUTMENT, PIER #4). ALSO SEE W. PIER PLAN ON SHEET 6.

REMOVE EXSITING 2" NEOPRENE JOINT, REPLACE WITH SILICONE JOINT SEALER 2" AND POLYMER CONCRETE (WEST ABUTMENT)

ILLINOIS DEPARTMENT OF TRANSPORTATION
LOC 3 (SN 016-1061)
OHIO ST WEST APPROACH

ROUTE	SECTION	COUNTY	TOTAL SHEETS	SHEET NUMBER
FAP 383	2005-028 I	COOK	16	12

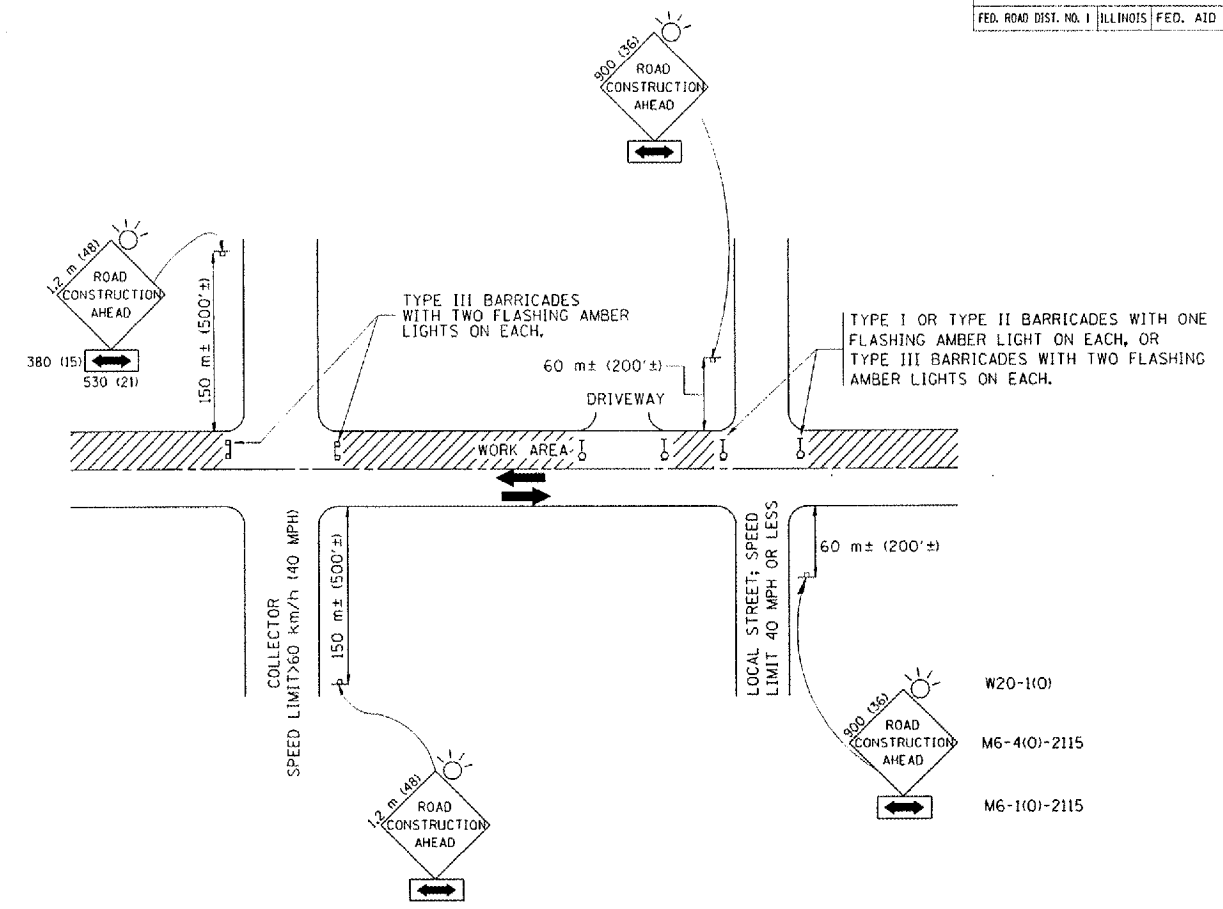
CONTRACT 62965
Sheet 3 of 3



ILLINOIS DEPARTMENT OF TRANSPORTATION
LOC 3 (SN 016-1061)
OHIO ST WEST APPROACH
FOR INFORMATION ONLY

62965

F.A. RTE.	SECTION	COUNTY	TOTAL SHEETS	SHEET NO.
			16	13
STA.		TO STA.		
FED. ROAD DIST. NO. 1 ILLINOIS FED. AID PROJECT				



TRAFFIC CONTROL AND PROTECTION FOR SIDE ROADS, INTERSECTIONS, AND DRIVEWAYS

NOTES:

- A. FOR NO LANE RESTRICTION ON THE SIDE ROAD OR DRIVEWAYS
 - 1. SIDE ROAD WITH A SPEED LIMIT OF 60 km/h (40 MPH) OR LESS AS SHOWN ON THE DRAWING AND AS DIRECTED BY THE ENGINEER:
 - a) ONE ROAD CONSTRUCTION AHEAD SIGN 900x900 (36x36) WITH A FLASHER AND FLAG MOUNTED ON IT APPROXIMATELY 60 m (200') IN ADVANCE OF THE MAIN ROUTE.
 - b) THE CLOSED PORTION OF THE MAIN ROUTE SHALL BE PROTECTED BY BLOCKING WITH TYPE I, TYPE II OR TYPE III BARRICADES, 1/3 OF THE CROSS SECTION OF THE CLOSED PORTION.
 - 2. SIDE ROAD WITH A SPEED LIMIT GREATER THAN 60 km/h (40 MPH) AS SHOWN ON THE DRAWING AND AS DIRECTED BY THE ENGINEER:
 - a) ONE ROAD CONSTRUCTION AHEAD SIGN 1.2 m x 1.2 m (48x48) WITH A FLASHER MOUNTED ON IT APPROXIMATELY 150 m (500') IN ADVANCE OF THE MAIN ROUTE.
 - b) THE CLOSED PORTION OF THE MAIN ROUTE SHALL BE PROTECTED BY BLOCKING WITH TYPE III BARRICADES, 1/2 OF THE CROSS SECTION OF THE CLOSED PORTION.
 - 3. WHEN THE SIDE ROAD LIES BETWEEN THE BEGINNING OF THE MAINLINE SIGNING AND THE WORK ZONE, A SINGLE HEADED ARROW (M6-1) SHALL BE USED IN LIEU OF THE DOUBLE HEADED ARROW (M6-4).
- B. FOR A LANE CLOSURE ON A SIDE ROAD OR DRIVEWAY:
 - USE APPLICABLE PORTIONS OF THE TYPICAL APPLICATION OF TRAFFIC CONTROL DEVICES (STD. 701501, STD. 701606 OR THE APPROPRIATE STANDARD). THE SPACING OF SIGNS AND BARRICADES SHALL BE ADJUSTED FOR FIELD CONDITIONS AS DIRECTED BY THE ENGINEER. THE DIRECTIONAL ARROW SHALL BE COVERED OR REMOVED WHEN NO LONGER CONSISTENT WITH THE SIDE ROAD LANE CLOSURE.
 - C. ADVANCE WARNING SIGNS ARE TO BE OMITTED ON DRIVEWAY UNLESS OTHERWISE NOTED.
 - D. THE TRAFFIC CONTROL AND PROTECTION FOR SIDE ROADS, INTERSECTIONS, AND DRIVEWAYS SHALL BE INCIDENTAL TO THE COST OF SPECIFIED TRAFFIC CONTROL STANDARDS OR ITEMS.

REVISIONS	
NAME	DATE
LHA	6/89
T. RAMMACHER	09/08/94
J. OBERLE	10/18/95
A. HOUSEH	03/06/96
A. HOUSEH	10/15/96
T. RAMMACHER	01/06/00

ILLINOIS DEPARTMENT OF TRANSPORTATION
 TRAFFIC CONTROL AND PROTECTION
 FOR
 SIDE ROADS, INTERSECTIONS, AND
 DRIVEWAYS

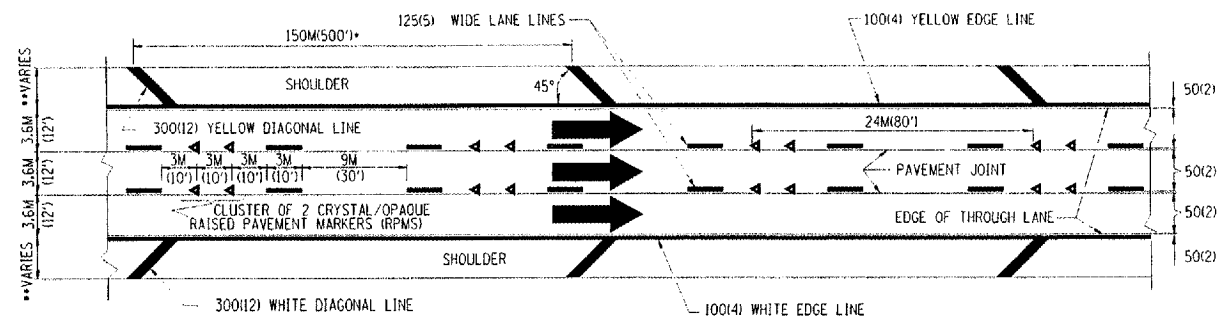
SCALE: VERT. _____
 HORIZ. _____
 DATE 10/18/2002

DRAWN BY _____
 CHECKED BY _____
 TC-10

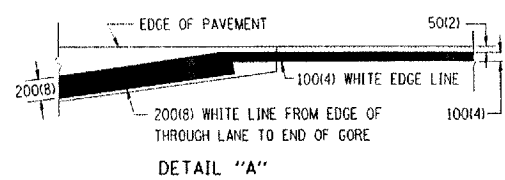
62965

P.A. A/C.	SECTION	COUNTY	TOTAL SHEETS	SHEET NO.
			16	14
STA.		TO STA.		
FED. ROAD DIST. NO. 7		ILLINOIS	FED. AID PROJECT	

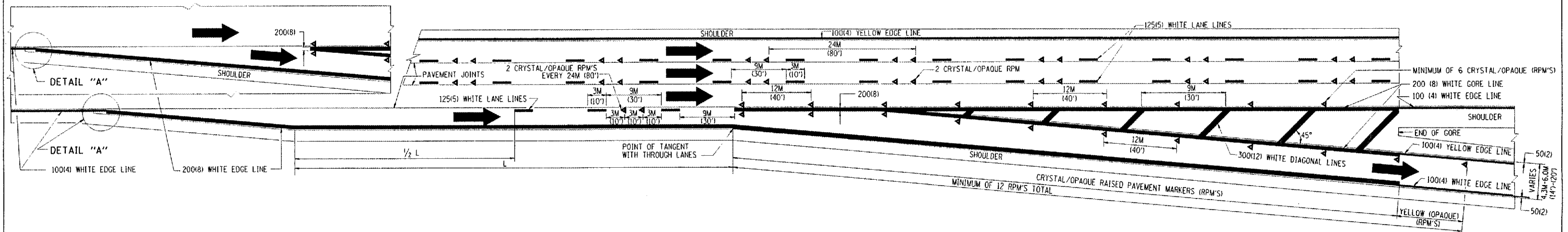
- THE DIAGONAL LINES SHALL BE SPACED AT 12M (40') C-C ACROSS ALL STRUCTURES WHICH ARE 150M (500') OR LESS IN LENGTH
- THE DIAGONAL LINES ARE NOT REQUIRED ON SHOULDERS WHICH ARE 1.8M (6') OR LESS IN WIDTH



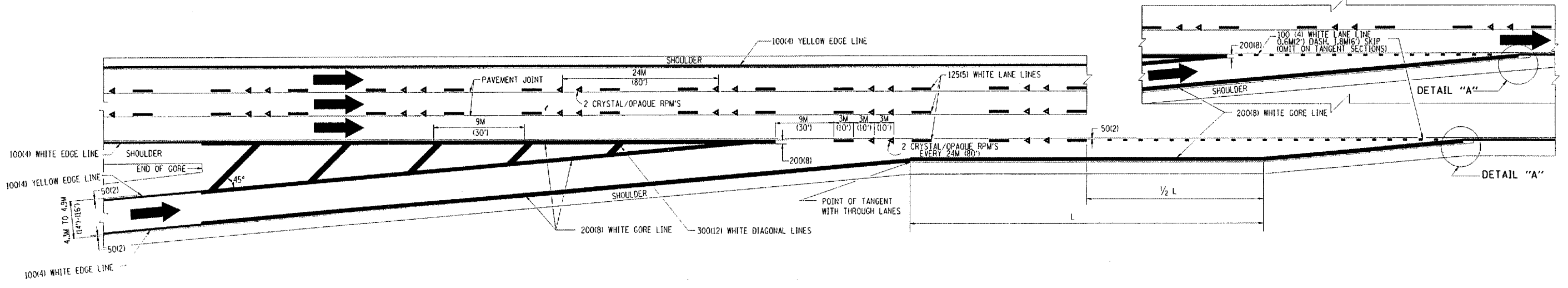
- NOTES:
1. THERMO PLASTIC PAVEMENT MARKING LINE SHALL BE USED FOR THE EDGE LINES, GORE LINES, AND DIAGONAL LINES ON BITUMINOUS PAVEMENT ONLY.
 2. PREFORMED PLASTIC PAVEMENT MARKING LINE SHALL BE USED FOR ALL LANE LINES
 3. PREFORMED PLASTIC PAVEMENT MARKING LINE SHALL BE USED ON PCC PAVEMENT.



TYPICAL EDGE LINES & LANE LINES



TYPICAL EXIT RAMP PAVEMENT MARKINGS



TYPICAL ENTRANCE RAMP PAVEMENT MARKINGS

REVISIONS	
NAME	DATE
DWS	1/90
DWS	5/91
AH	3/96
DWS	7/96

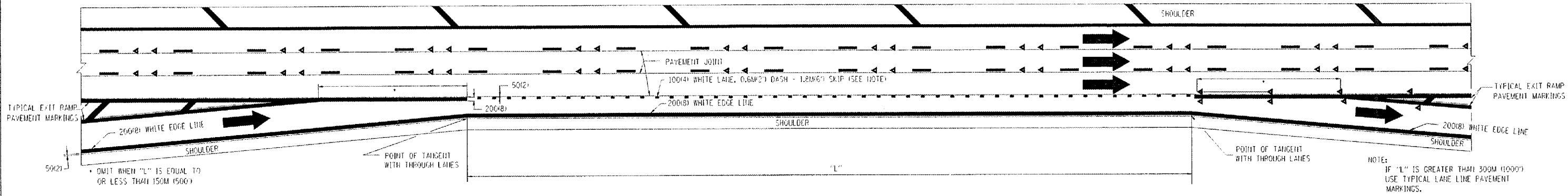
ILLINOIS DEPARTMENT OF TRANSPORTATION

MULTI-LANE FREEWAY PAVEMENT MARKING DETAILS

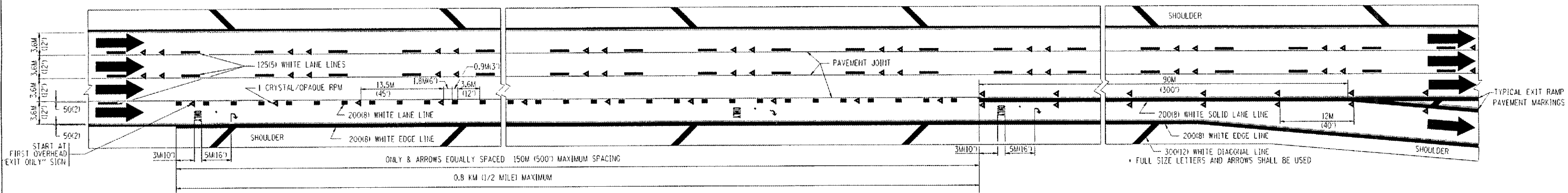
SCALE: NONE DRAWN BY C.A.D.D.
 DATE: 10/18/2002 CHECKED BY TC12 SHEET 1 OF 2
 REVISION DATE: 8/10/99

62965

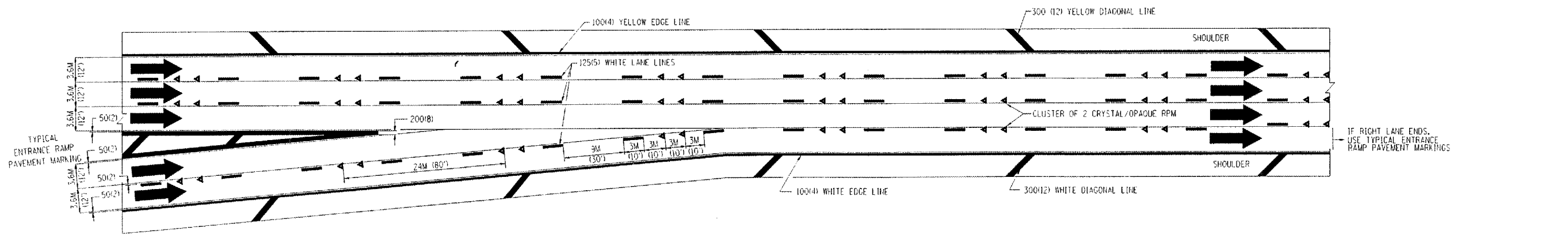
F. A. NO.	SECTION	COUNTY	TOTAL SHEETS	SHEET NO.
			16	15
STA.	TO STA.			
FED. ROAD DIST. NO. 1	ALTIMOS	FED. AID PROJECT		



TYPICAL ENTRANCE/EXIT RAMP COMBINATION PAVEMENT MARKINGS



TYPICAL EXIT ONLY LANE PAVEMENT MARKINGS



TYPICAL TWO LANE ENTRANCE RAMP PAVEMENT MARKINGS

REVISIONS	
NAME	DATE
DWS	1/90
DWS	5/91

ILLINOIS DEPARTMENT OF TRANSPORTATION

MULTI-LANE FREEWAY PAVEMENT MARKING DETAILS

SCALE: NONE

DATE: 10/18/2002

DRAWN BY C.A.D.D.

CHECKED BY

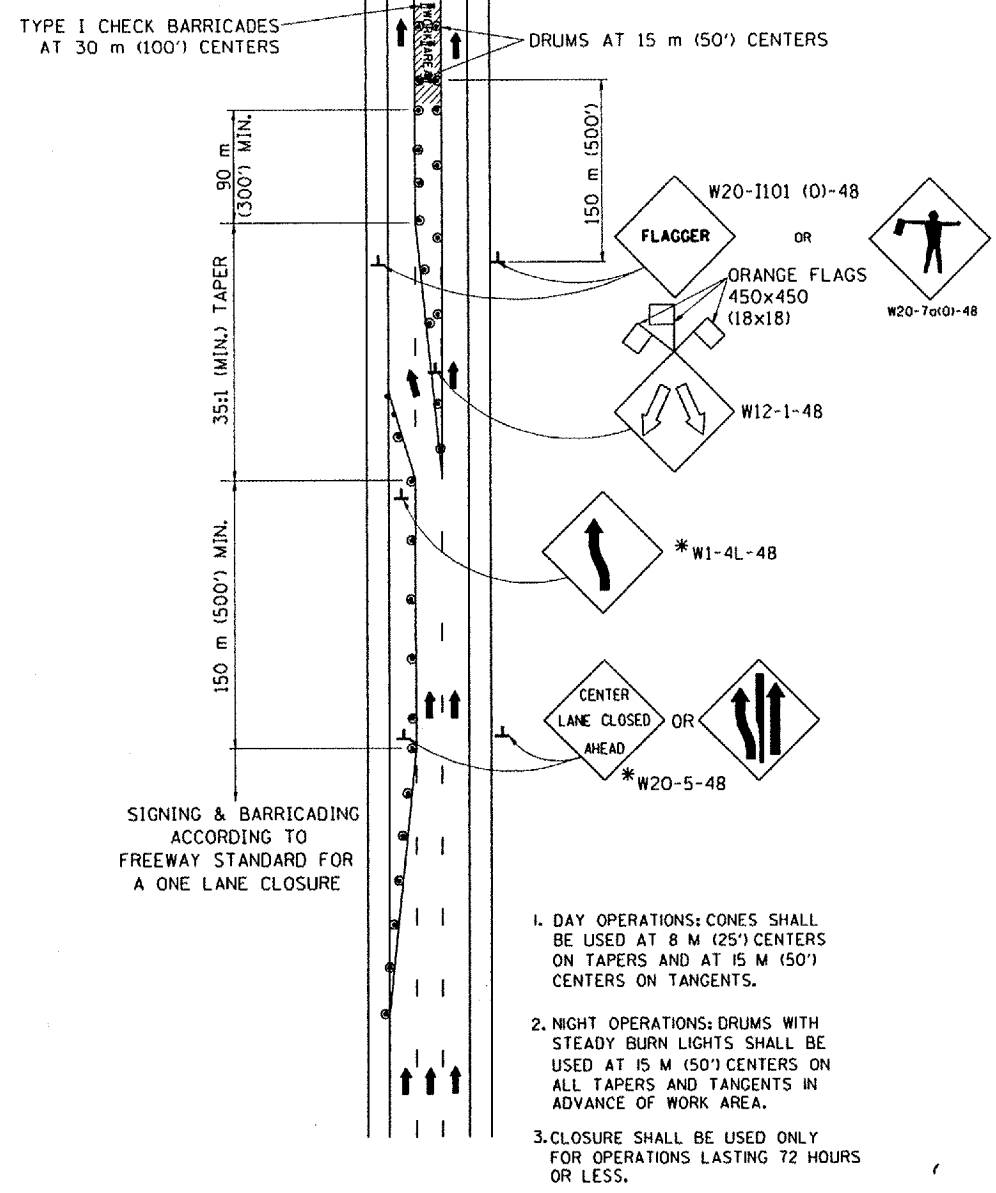
TC12 SHEET 2 OF 2

REVISION DATE 10/18/96

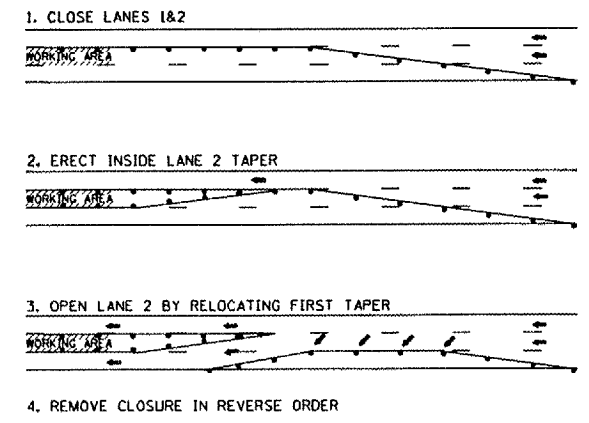
62965

P.L. FILE	SECTION	COUNTY	TOTAL SHEETS	SHEET
			16	16
STA.	TO STA.			
P.L. ROAD DIST. NO. 1		ILLINOIS	FOR JOB PROJECT	

CENTER LANE CLOSURE

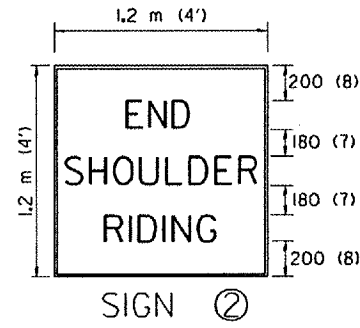
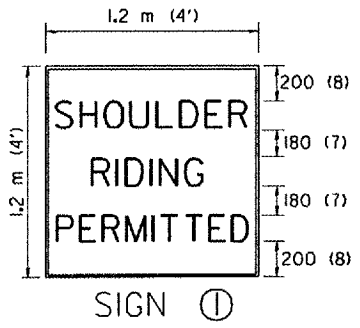
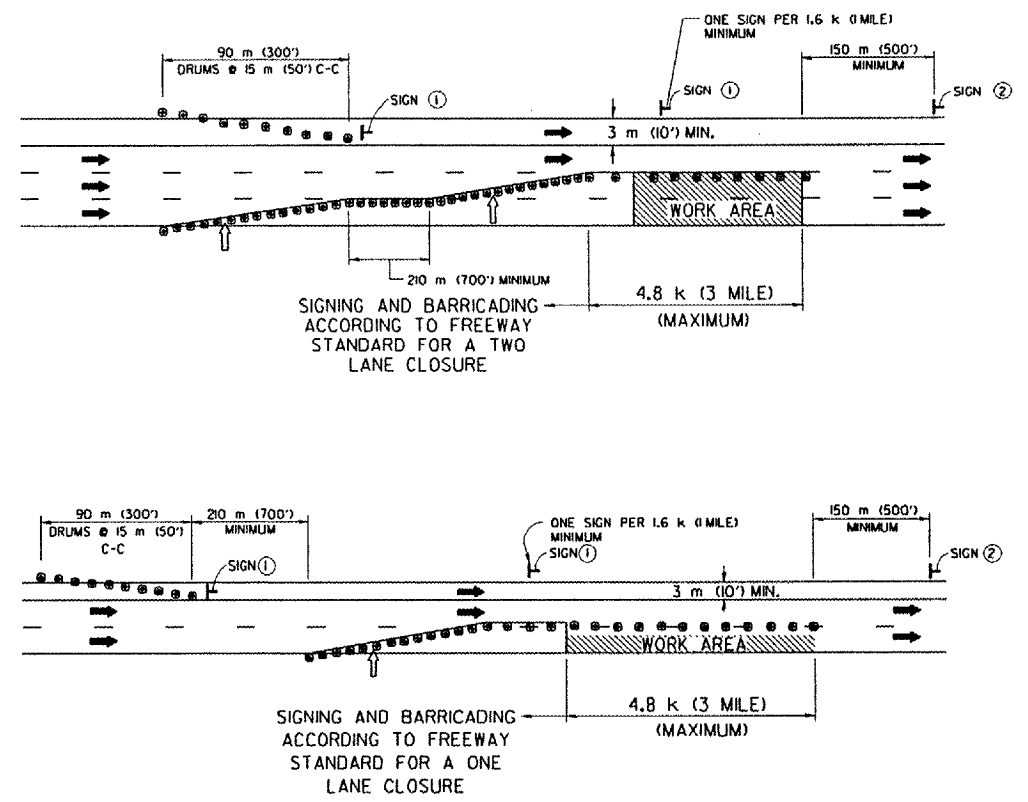


INSTALLATION SEQUENCE



SHOULDER LANE

NOTE: CLOSURE SHALL BE USED ONLY FOR OPERATIONS LASTING 72 HOURS OR LESS.



150 (6) SERIES "C" LEGEND
BLACK LEGEND
WHITE REFLECT. BACKGROUND
25 (1) BORDER

SYMBOLS

- ↑ ARROWBOARD
 - ▨ WORK AREA
 - ◇ SIGN WITH 450x450 (18x18) ORANGE FLAGS ATTACHED *
 - ┆ SIGN ON PORTABLE OR PERMANENT SUPPORT *
 - CONES
 - DRUM WITH MONO-DIRECTIONAL STEADY BURNING LIGHT
- * ALL SIGNS SHALL BE MOUNTED AT A MINIMUM HEIGHT OF 1.5 m (5').

REVISIONS	
NAME	DATE
PRIOR DETAILS ON TC-9 - JAF	4/03

ALL DIMENSIONS ARE IN MILLIMETERS (INCHES) UNLESS OTHERWISE SHOWN

ILLINOIS DEPARTMENT OF TRANSPORTATION

TRAFFIC CONTROL DETAILS
FOR FREEWAY
CENTER LANE CLOSURE
SHOULDER LANE

SCALE: NONE
DATE: 05/06/2003

DRAWN BY R.H.
CHECKED BY
TC-25

REVISION DATE: N/A