

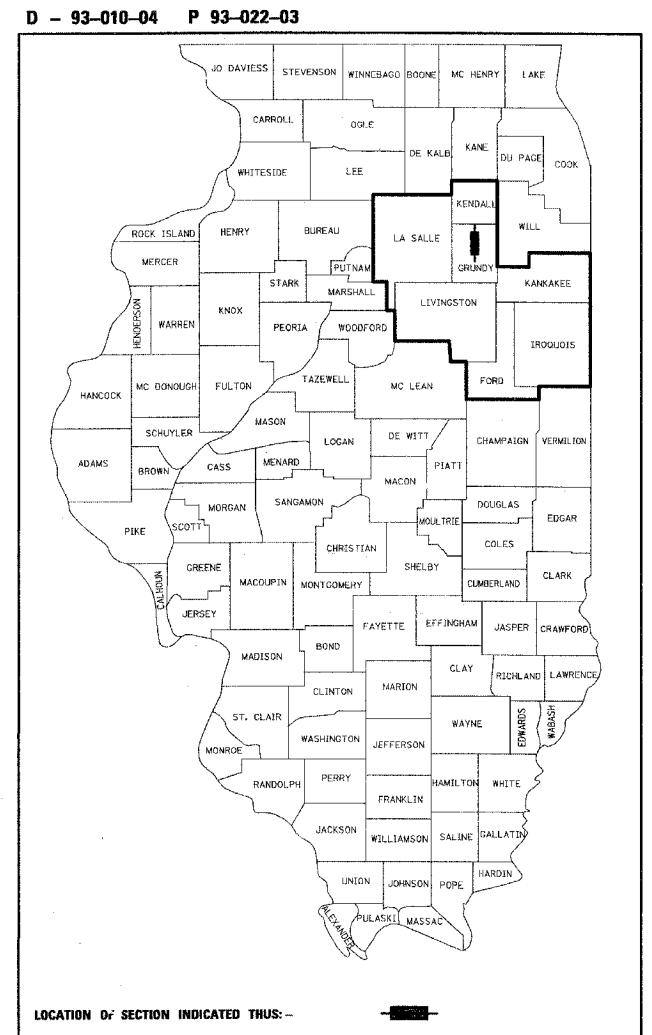
STATE OF ILLINOIS  
DEPARTMENT OF TRANSPORTATION  
DIVISION OF HIGHWAYS

# PLANS FOR PROPOSED FEDERAL AID HIGHWAY IMPROVEMENT

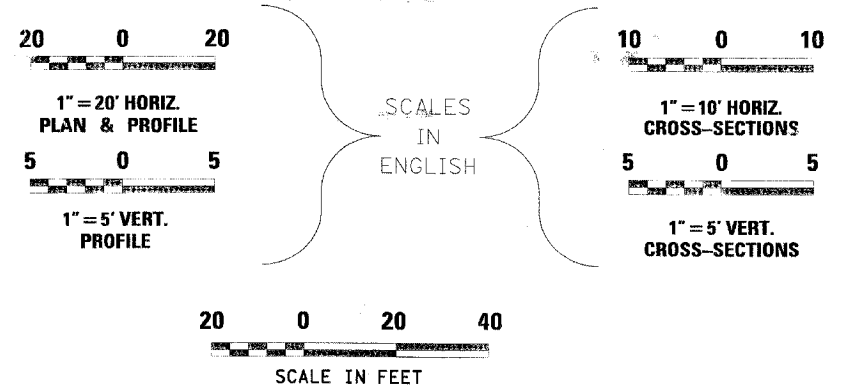
F.A.I. 80 (I-80)  
SECTION 32-3HBR-1  
GRUNDY COUNTY  
C-93-005-04  
PROJECT BRI-IM-080-3(120)113

RECEIVED	STUDIES & PLANS
SEP 13 2005	
DESIGNED	
ENVIRONMENTAL	
ESTIMATED	
PERMITS	
PLANNING	
PLANS	
SECTION	
NO.	
DATE	

FAI RTE	SECTION	COUNTY	TOTAL SHEETS	SHEET NO.
80	32-3HBR-1	GRUNDY	88	1
F.H.W.A. REG.		ILLINOIS	PROJECT	



SEE SHEET NO. 2 FOR INDEX TO SHEETS



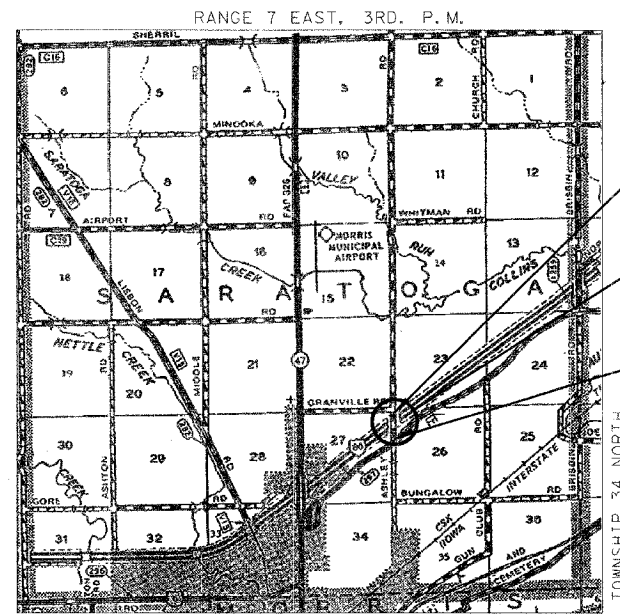
THIS PROJECT INVOLVES THE REMOVAL AND REPLACEMENT OF EXIST.S.N.032-0057 WHICH CARRIES ASHLEY ROAD OVER I 80, WHICH IS LOCATED 1.3 MILES EAST OF MORRIS

**DESIGN DESIGNATION**

ASHLEY ROAD  
SPEED LIMIT: 55 MPH  
ADT = 710 (2003) 750 (2006)  
% SU = 3.0%  
% MU = 3.0%

**HIGHWAY CLASSIFICATION**

MINOR ARTERIAL (URBAN)  
**SURVEY BOOK NOS.**  
FARNSWORTH GROUP, INC. - BOOK 2595 & 2594



IMPROVEMENT BEGINS STA. 100+95

(PROPOSED)

S.N. 032-0113  
A TWO SPAN COMPOSITE PLATE GIRDER BRIDGE WITH CONCRETE DECK ON A CONCRETE PIER AND CONCRETE ABUTMENTS. THE BACK TO BACK OF ABUTMENTS IS 251'-0" OUT TO OUT IS 35'-2".

IMPROVEMENT ENDS STA. 120+60

FULL SIZE PLANS HAVE BEEN PREPARED USING STANDARD ENGINEERING SCALES, REDUCED SIZED PLANS WILL NOT CONFORM TO STANDARD SCALES, IN MAKING MEASUREMENTS ON REDUCED PLANS, THE ABOVE SCALES MAY BE USED.

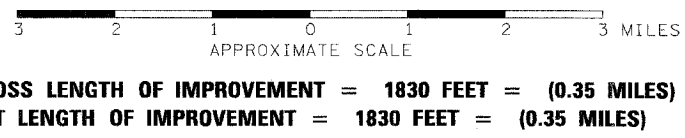
MICROFILMED \_\_\_\_\_  
REEL NUMBER \_\_\_\_\_  
AWARDED \_\_\_\_\_  
RESIDENT ENGINEER \_\_\_\_\_  
AS BUILT CHANGES WERE MADE ON THE FOLLOWING SHEETS \_\_\_\_\_

JULIE 1-800-892-0123  
DISTRICT 3 NO. (815) 434-6131  
PROJECT ENGINEER: Mr. DAVE BROVIAK  
UNIT CHIEF: Mr. SCOTT FERGUSON  
TOWNSHIP: SARATOGA

CONTRACT NO. 66407

FARNSWORTH GROUP, INC.

**LOCATION MAP**



Mark S. Wylie Date 9/9/05  
MARK S. WYLIE  
REGISTERED PROFESSIONAL ENGINEER  
NO. 062-043716  
EXPIRATION 11/30/05

**Farnsworth GROUP**  
2709 McGraw Drive  
Bloomington, Illinois 61704  
309/663-8435, 309/663-1571 fax  
PRINTED BY THE AUTHORITY OF THE STATE OF ILLINOIS

STATE OF ILLINOIS  
DEPARTMENT OF TRANSPORTATION  
DIVISION OF HIGHWAYS

SUBMITTED October 28, 2005

*Gregory P. Munton*  
DEPUTY DIRECTOR OF HIGHWAYS,  
REGION ENGINEER

February 3, 2006  
*Mike Stone*  
ENGINEER OF DESIGN AND ENVIRONMENT

February 3, 2006  
*Milton R. Sew*  
DIRECTOR, DIVISION OF HIGHWAYS