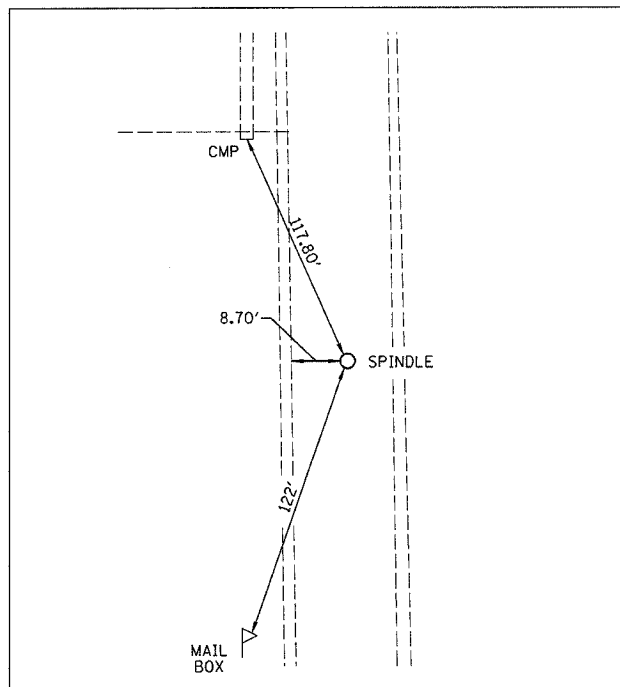
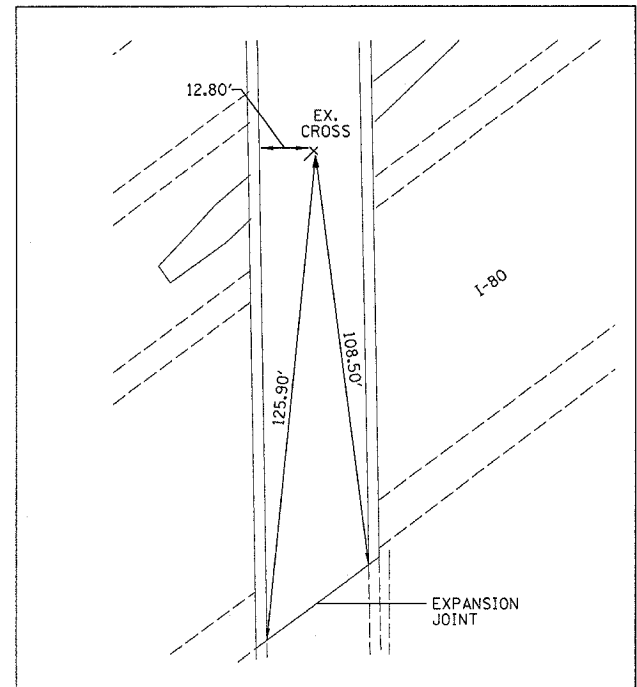


66407

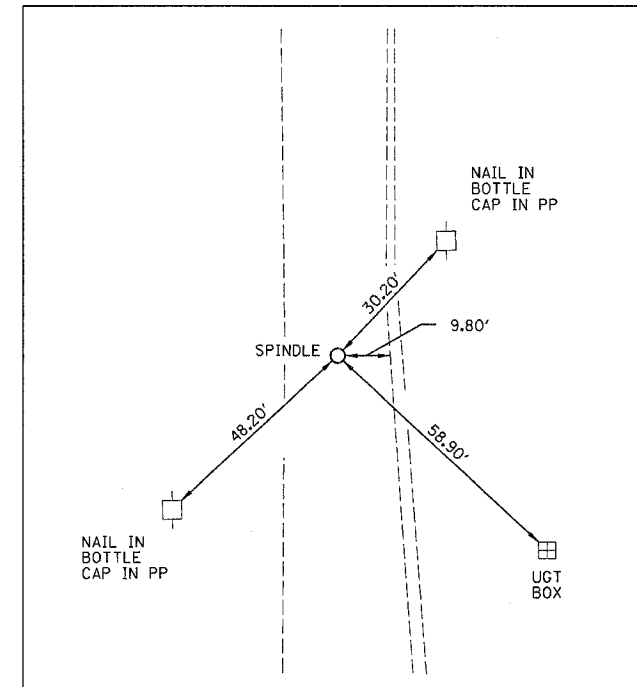
F.A.I. RTE.	SECTION	COUNTY	TOTAL SHEETS	SHEET NO.
80	32-3HBR-1	GRUNDY	88	8
STA.	TO STA.			
FED. ROAD DIST. NO.	ILLINOIS	FED. AID PROJECT		



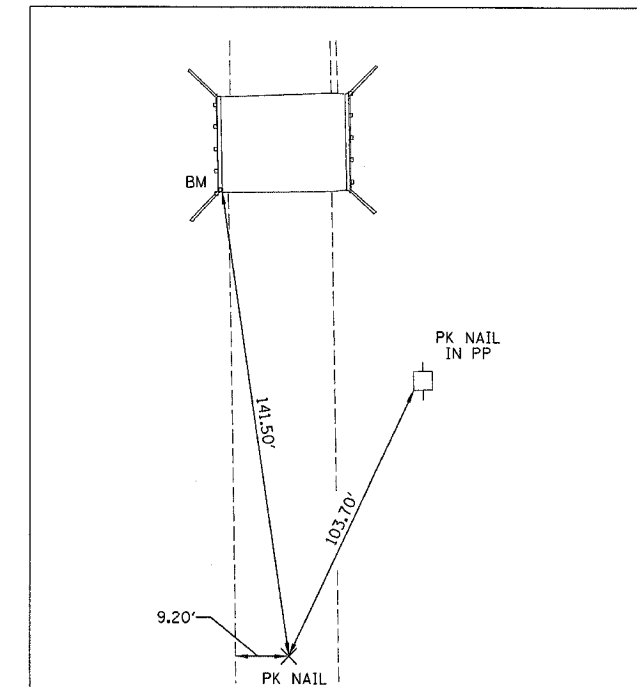
ASHLEY RD
STA 95+00, 0.00' LT
N=1725270.405
E=965064.547



ASHLEY RD
STA 110+00, 0.00' LT=
STA 1266+24.59 FAI-80
N=1723770.648
E=965088.998

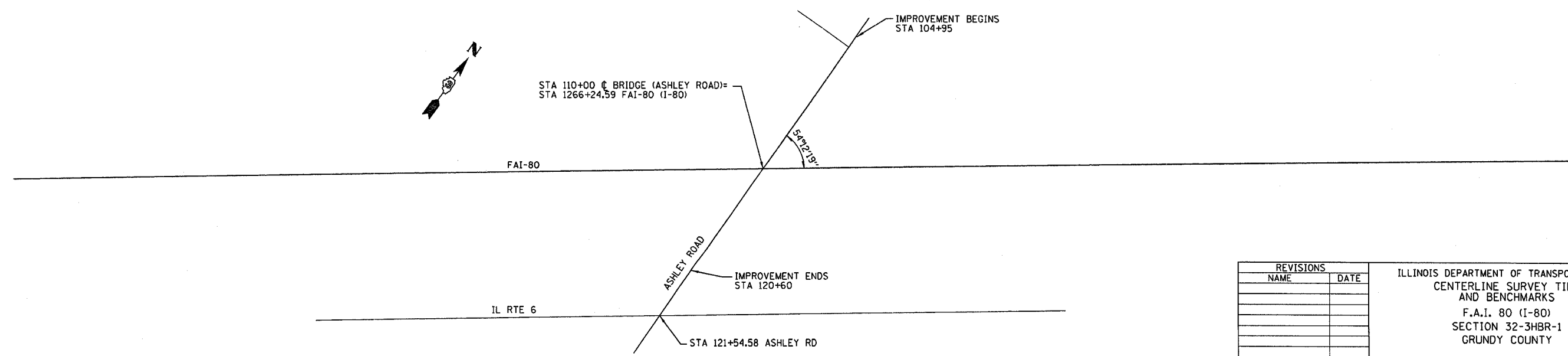


ASHLEY RD
STA 120+00, 0.00' LT
N=1722770.793
E=965105.227



ASHLEY RD
STA 130+00, 0.00' LT
N=1721770.918
E=965121.588

- BENCHMARK
STA 123+15±, 26' RT
ELEV=545.39
EX RR SPIKE IN POWER POLE @ S.W. CORNER OF RTE 6 & SUSAN RD
- BENCHMARK
STA 120+37±, 34' RRT
ELEV=549.25
EX RR SPIKE IN POWER POLE @ N.W. CORNER OF ASHLEY RD & RTE 6
- BENCHMARK
ELEV=566.51
STA 110+00
EX "X" @ C ASHLEY BRIDGE AND C I-80
- BENCHMARK
STA 103+67±, 90.5' RT
ELEV=550.08
E FOUNDATION OF 3RD CORN DRYER S. OF GRANVILLE RD W. SIDE OF ASHLEY RD
- BENCHMARK
STA 102+57±, 29' LT
ELEV=551.64
EX RR SPIKE IN POWER POLE @ S.E. CORNER OF GRANVILLE RD & ASHLEY RD
- BENCHMARK
ELEV=549.11
EX "□" @ CRASH WALL UNDER ASHLEY RD S. SIDE OF I-80
- BENCHMARK
ELEV=542.46
EX "□" ON E. END S. HEADWALL S. SIDE OF I-80 400' ± W. OF ASHLEY RD
- BENCHMARK
STA 128+65±, 15.5' RT
ELEV=530.90
EX "□" S.W. CORNER OF HEADWALL ON BRIDGE 500' ± S. OF RTE 6 ON ASHLEY RD



REVISIONS	
NAME	DATE

ILLINOIS DEPARTMENT OF TRANSPORTATION
CENTERLINE SURVEY TIES
AND BENCHMARKS
F.A.I. 80 (I-80)
SECTION 32-3HBR-1
GRUNDY COUNTY

DATE: 09/09/05
DRAWN BY: JJO
CHECKED BY: MSW