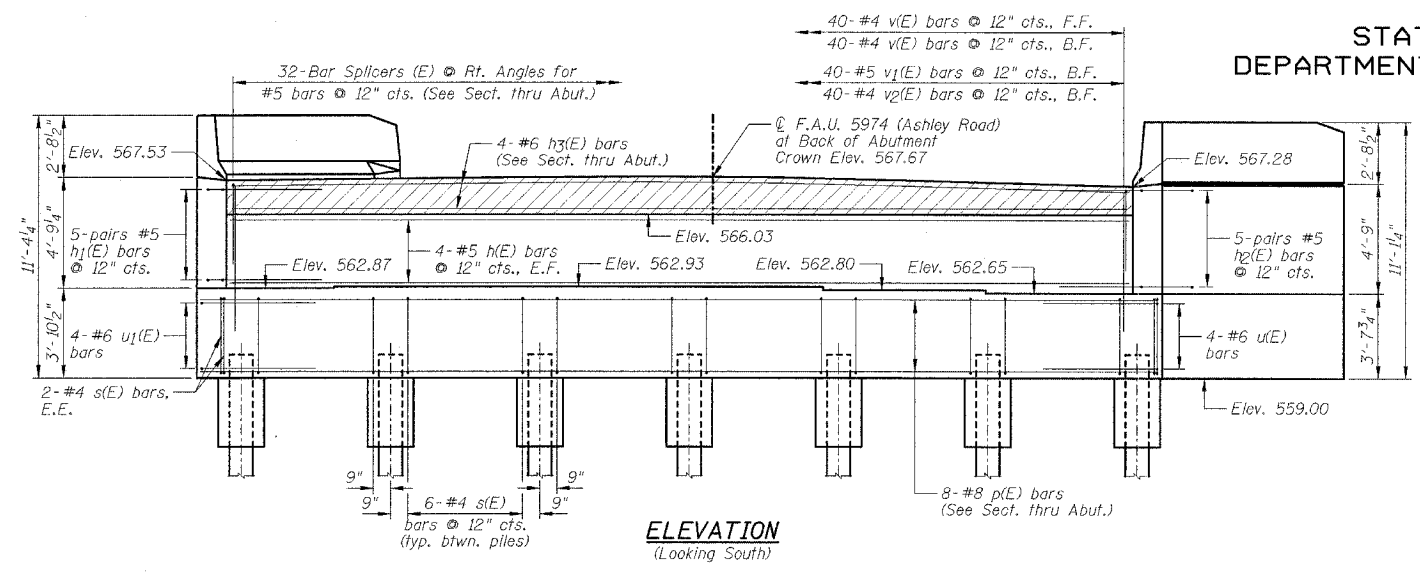


STATE OF ILLINOIS
DEPARTMENT OF TRANSPORTATION

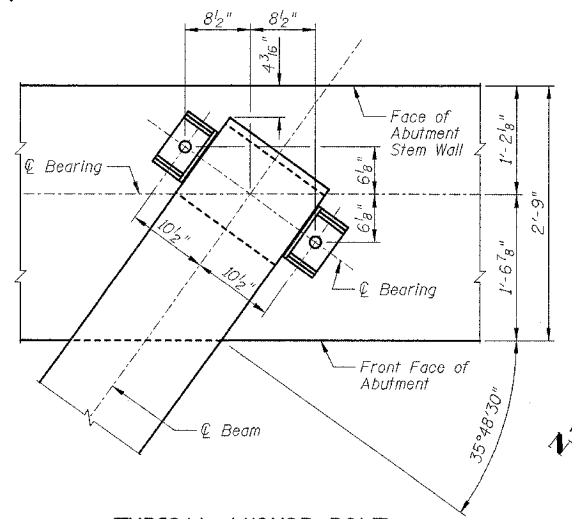
CONTRACT NO. 66407

F.A.I. RTE.	SECTION	COUNTY	TOTAL SHEET NO.	SHEET NO.
80	32-3HBR-1	GRUNDY	88	48
STA.	TO STA.			
FED. ROAD DIST. NO.	ILLINOIS	FED. AID PROJECT		

SHEET NO. B21
OF 35 SHEETS



ELEVATION
(Looking South)



TYPICAL ANCHOR BOLT PLACEMENT DETAIL

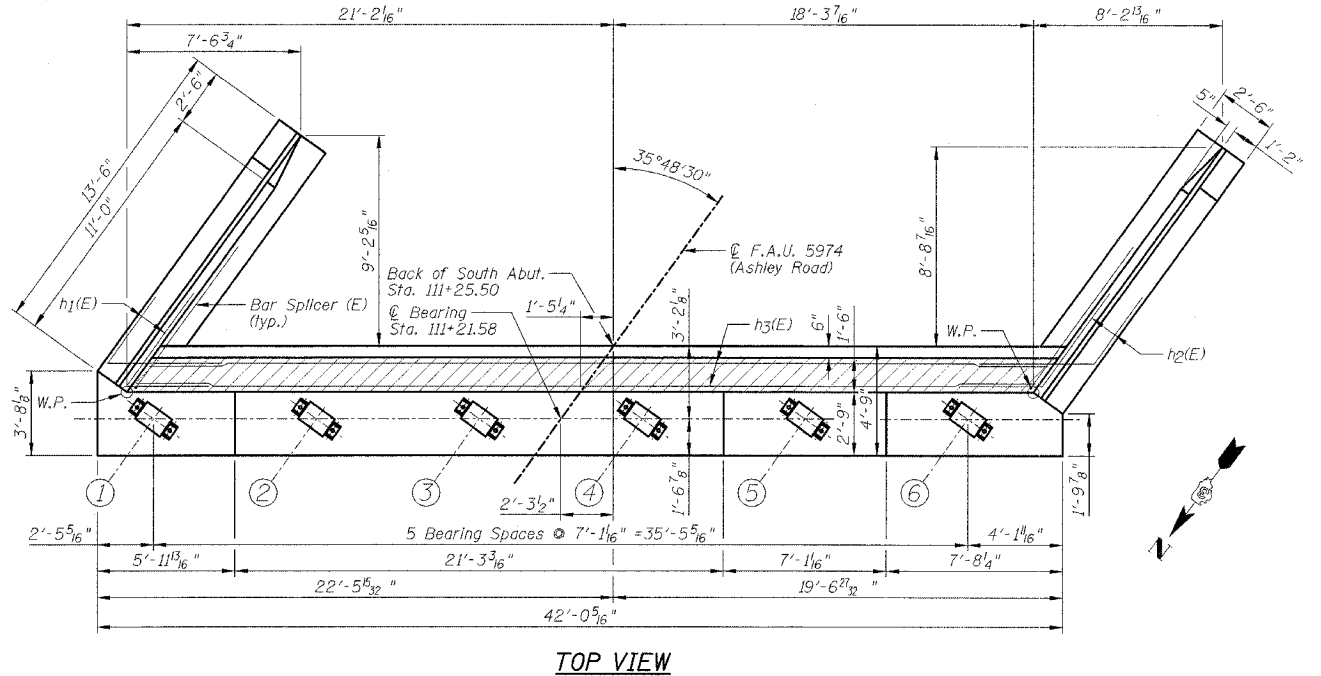
**SOUTH ABUTMENT
BILL OF MATERIAL**

Bar	No.	Size	Length	Shape
h(E)	8	#5	39'-1"	
h1(E)	10	#5	8'-7"	L
h2(E)	10	#5	8'-7"	L
h4(E)	4	#6	7'-2"	L
h5(E)	8	#6	8'-4"	L
h6(E)	14	#4	13'-3"	
h7(E)	22	#4	13'-2"	
n(E)	24	#6	12'-2"	U
n1(E)	12	#6	6'-1"	U
p(E)	8	#8	41'-8"	
p1(E)	12	#7	12'-0"	
s(E)	40	#4	16'-2"	□
s1(E)	26	#4	9'-5"	□
u(E)	4	#6	14'-4"	□
u1(E)	4	#6	13'-4"	L
v(E)	80	#4	5'-0"	
v1(E)	40	#5	2'-0"	
v2(E)	40	#4	3'-0"	
v3(E)	28	#6	7'-4"	
v4(E)	6	#6	7'-4"	
v5(E)	24	#6	7'-6"	

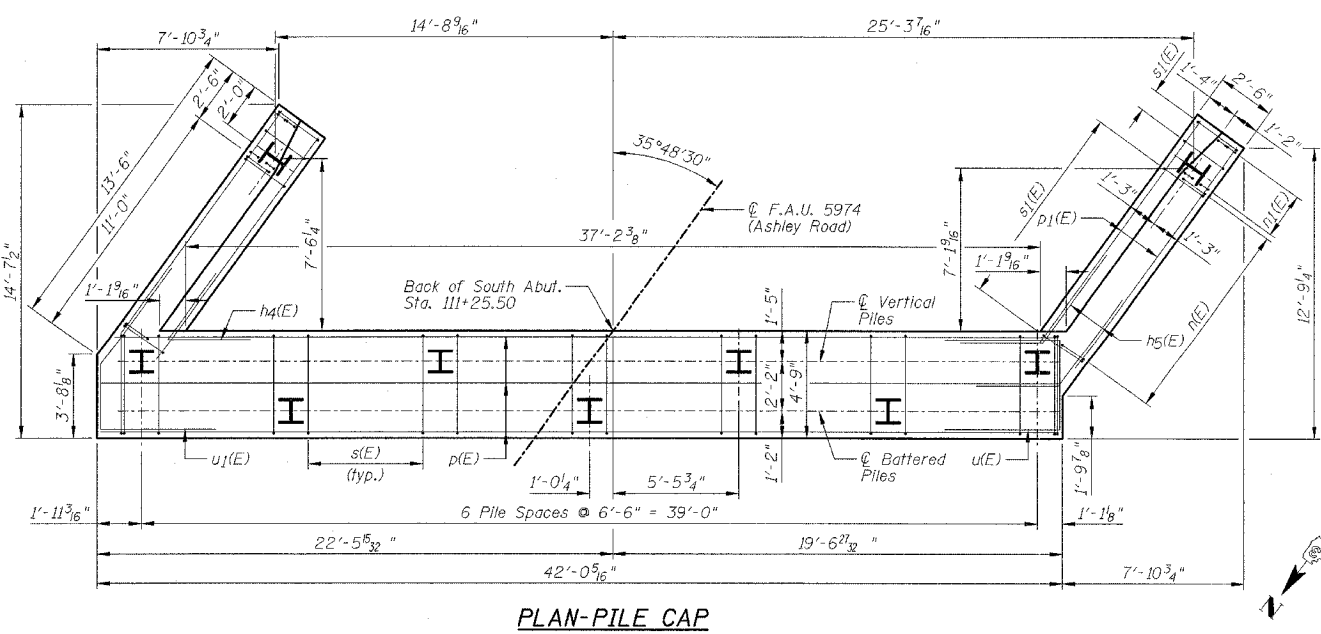
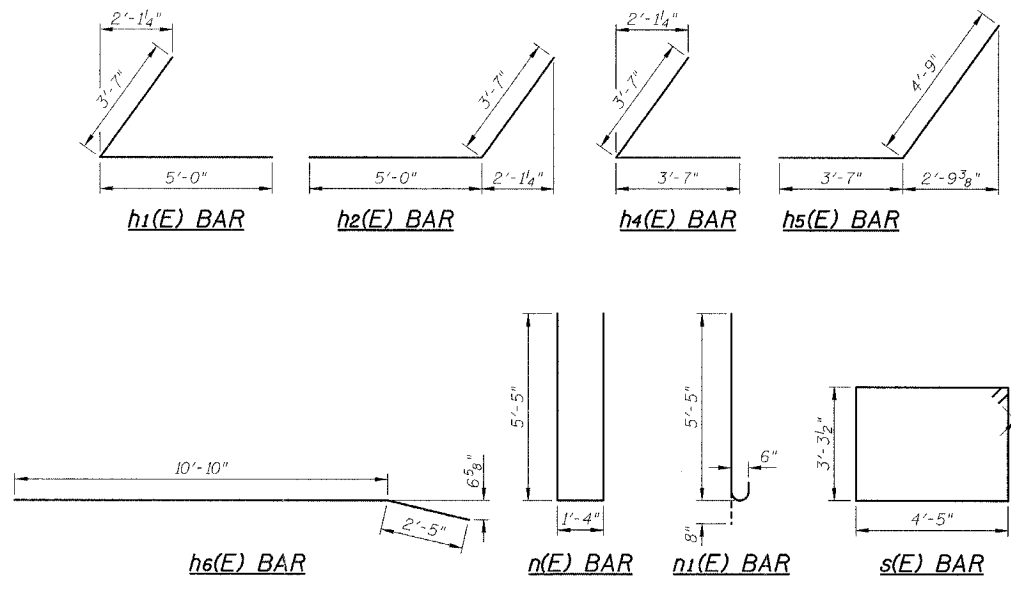
Item	Unit	Quantity
Forous Granular Embankment	Cu Yd	80
Structure Excavation	Cu Yd	450
Concrete Structures	Cu Yd	51.7
Reinforcement Bars, Epoxy Coated	Pound	4560
Furishing Steel Piles (HP12x63)	Foot	512
Test Piles HP12x63	Each	1
Driving Steel Piles	Foot	512
Bridge Seat Sealer	Sq Ft	116
Bar Splicers	Each	32

PILE DATA:

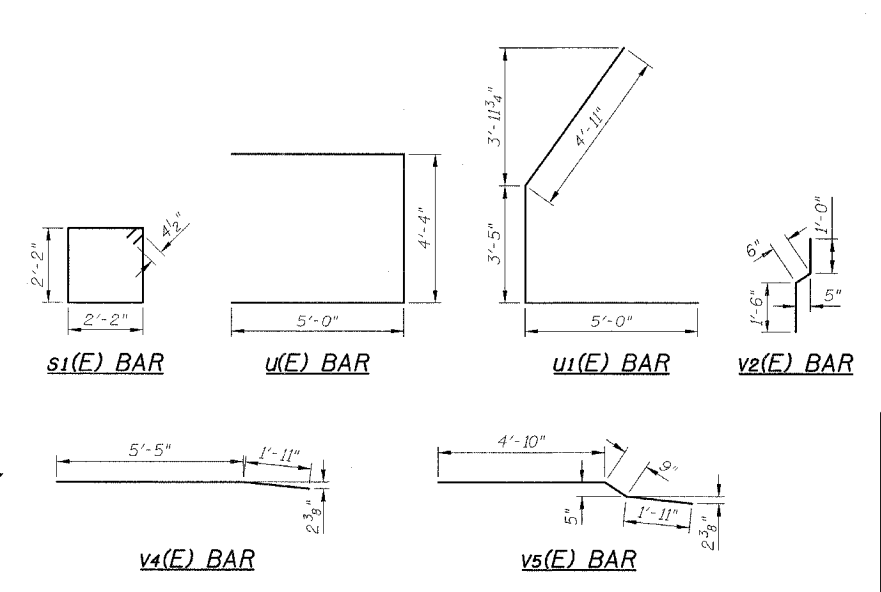
Type	HP12x63 Steel
No. Req'd.	8*1 Test Pile
Est. Length	64 Feet
Capacity	Drive to Refusal



TOP VIEW



PLAN-PILE CAP



NOTES:

- 1.) Work this sheet with Sheets B2, B4 & B22.
- 2.) Space reinforcement in cap to miss anchor bolts.
- 3.) Reinforcement bars designated (E) shall be epoxy coated.
- 4.) Pour steps monolithically with cap.
- 5.) B.F. denotes Back Face, F.F. denotes Front Face, E.E. denotes Each End.
- 6.) h3(E) bars are included with the Superstructure Quantities on Sheet B11.

REVISIONS		ILLINOIS DEPARTMENT OF TRANSPORTATION	
NAME	DATE	SOUTH ABUTMENT	
		F.A.I. 80 (I-80)	
		F.A.U. 5974 (ASHLEY ROAD) OVER I-80	
		SECTION 32-3HBR-1	
		GRUNDY COUNTY	
		STATION 110+00.00 STRUCTURE NO. 032-0113	
		DESIGNED BY: JML	DRAWN BY: DJM
		DATE: 09/09/05	CHECKED BY: MSW