

F.A.I. RTE.	SECTION	COUNTY	TOTAL SHEETS	SHEET NO.
80	32-3HBR-1	GRUNDY	88	58
STA.		TO STA.		
FED. ROAD DIST. NO.		ILLINOIS FED. AID PROJECT		

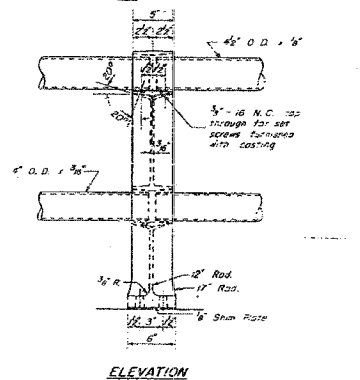
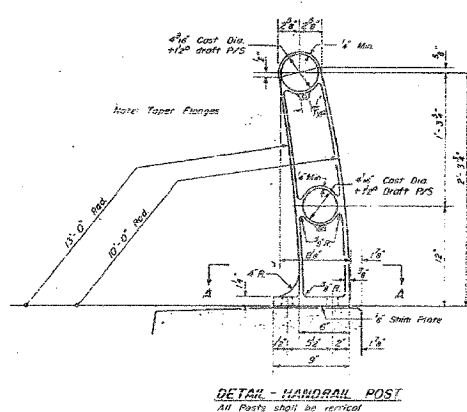
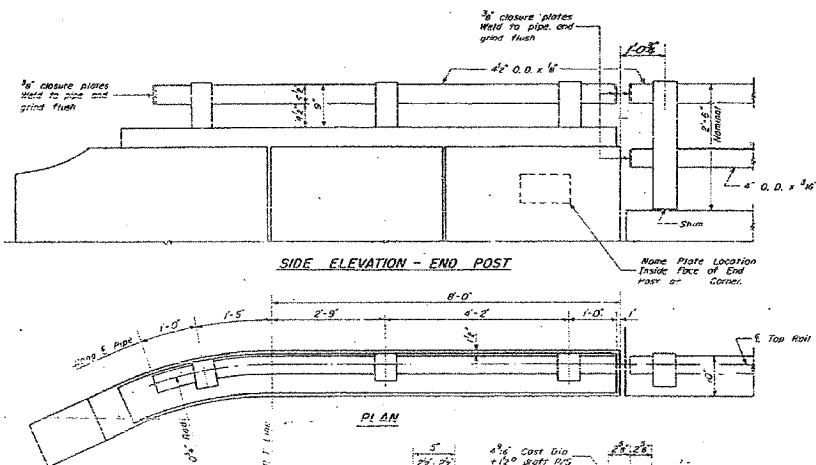
SHEET NO. B31
OF 35 SHEETS

STATE OF ILLINOIS
DEPARTMENT OF TRANSPORTATION

STATE OF ILLINOIS
DEPARTMENT OF PUBLIC WORKS & BUILDINGS
DIVISION OF HIGHWAYS

DATE	ISSUED	BY	FOR	SHEET NO.
10/26/57	11/14/57	Grundy	10	9

Note: Face spacing of Rail Posts see sheet #4

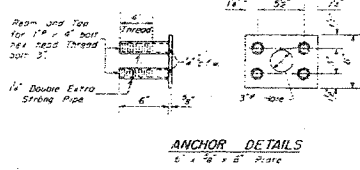
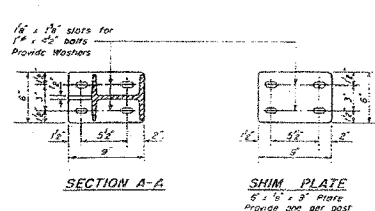
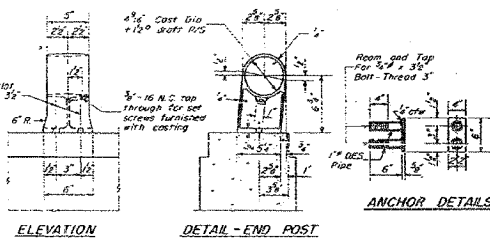


CALL OF MATERIAL

Aluminum Handrail 1 1/2 x 3/8

Notes:
Aluminum Handrail Post (Parapet Cast) shall conform to ASTM Spec B-108-56F Alloy 5052, condition T-6.
Aluminum Alloy Extruded Tube shall conform to ASTM Spec B241-56T alloy 6061 condition T6.
Aluminum Alloy Shims shall be made from sheet or plate conforming to ASTM Spec B209-56T alloy 5052 condition D.
Aluminum Alloy Bars shall be made from rod conforming to ASTM Spec B211-56T Alloy 6061.
Bar nuts shall conform to American Standard regular hexagon, ASA Spec B-18.2, Threads shall conform to American Standard coarse series, Class 2, 2A or 2B.
The finished nuts shall be heat treated to the 74 Temper, given an anodic coating of least .0002 inches in thickness and chromate seal.
Aluminum Alloy Washers shall be made from sheet conforming to ASTM Spec B209-56T Alloy 5052 Class 2A Condition T6.
Anchor Bolts shall conform to Structural Carbon Steel ASTM A193-50T.
Where Aluminum alloys come in contact with masonry, the contacting surfaces shall be treated with an aluminum unseparated coating compound.

DESIGNED	T. Tavel	EXAMINED	Nov 14 1957
CHECKED	A. R. R.	PASSED	[Signature]
DRAWN	A. R. R.	APPROVED	[Signature]
CHECKED	A. R. R.		



ALTERNATE 'B'
HANDRAIL DETAIL
BRIDGE OVER F.A.I. RT. 6
F.A.I. RT. 6 SEC. 32-3HBR-1
GRUNDY COUNTY
Sta. 1266+24.53 (F.A.I.-C)

FOR INFORMATIONAL
USE ONLY

REVISIONS		ILLINOIS DEPARTMENT OF TRANSPORTATION EXISTING PLANS F.A.I. 80 (I-80) F.A.U. 5974 (ASHLEY ROAD) OVER I-80 SECTION 32-3HBR-1 GRUNDY COUNTY STATION 110+00.00 STRUCTURE NO. 032-0113 DESIGNED BY: JML DATE: 09/09/05
NAME	DATE	
		DRAWN BY: DJM CHECKED BY: MSW