

STATE OF ILLINOIS
DEPARTMENT OF TRANSPORTATION

F.A.I. RTE.	SECTION	COUNTY	TOTAL SHEETS	SHEET NO.
80	32-3HBR-1	GRUNDY	88	63
STA.		TO STA.		
FED. ROAD DIST. NO.		ILLINOIS FED. AID PROJECT		

Benchmarks: 1.) Existing railroad spike in power pole @ S.E. corner of Granville Rd. & Ashley Rd. @ Station 102+56.46/28.81' LT., Elevation = 551.64
2.) Existing railroad spike in power pole @ N.W. corner of Rte. 6 & Ashley Rd. @ Station 120+38.15/33.68' RT., Elevation = 549.25.

Existing Structure: Existing Culvert, built 1957, Section 32-3 HBR-1 at Station 114+17.59 and carries F.A.U. Route 5974 (Ashley Road) over an unnamed creek. Consists of a single 12'x8' reinforced concrete box culvert and the out to out headwall length Traffic will be maintained during construction via detour routes.

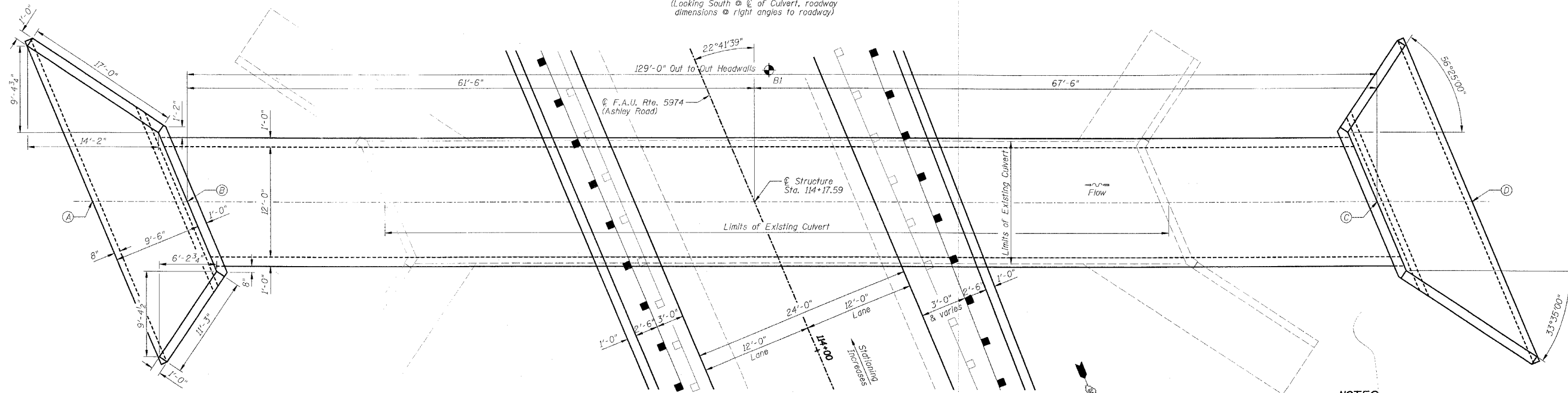
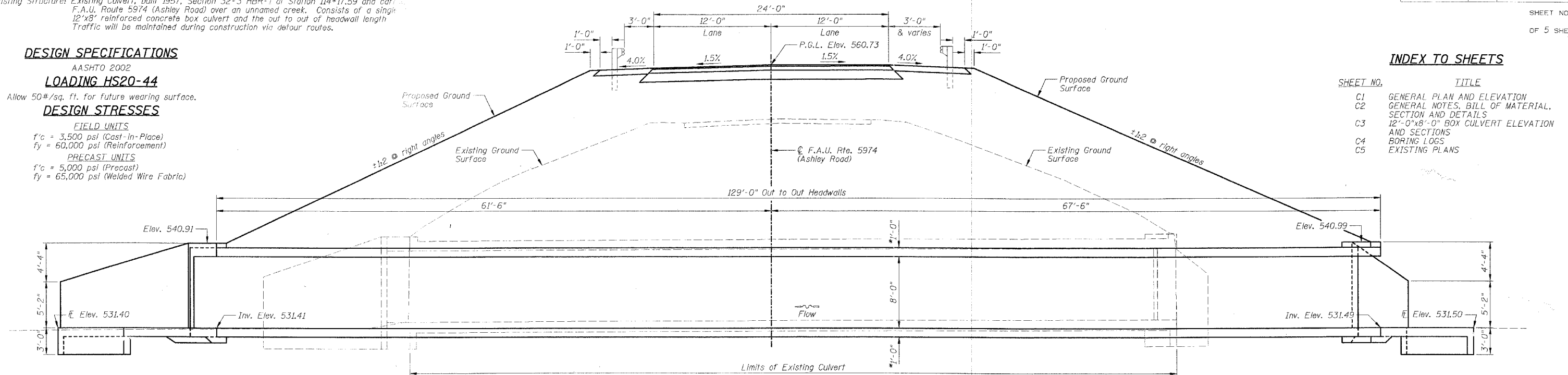
DESIGN SPECIFICATIONS

AASHTO 2002
LOADING HS20-44
Allow 50#/sq. ft. for future wearing surface.
DESIGN STRESSES
FIELD UNITS
f'c = 3,500 psi (Cast-in-Place)
fy = 60,000 psi (Reinforcement)
PRECAST UNITS
f'c = 5,000 psi (Precast)
fy = 65,000 psi (Welded Wire Fabric)

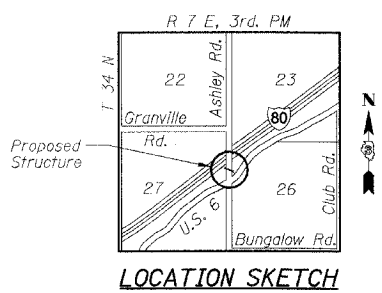
INDEX TO SHEETS

SHEET NO.	TITLE
C1	GENERAL PLAN AND ELEVATION
C2	GENERAL NOTES, BILL OF MATERIAL, SECTION AND DETAILS
C3	12'-0"x8'-0" BOX CULVERT ELEVATION AND SECTIONS
C4	BORING LOGS
C5	EXISTING PLANS

SHEET NO. C1
OF 5 SHEETS



- NOTES:**
- 1.) Work this sheet with Sheets C2-C4.
 - 2.) P.G.L. denotes Profile Grade Line.
 - 3.) For riprap locations, see Roadway Plans.

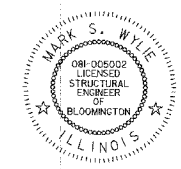


TOTAL BILL OF MATERIAL - BOX CULVERT

ITEMS	UNITS	TOTAL
Removal of Existing Structures No. 2	Each	1
Concrete Box Culverts	Cu Yd	43.1
Reinforcement Bars	Pound	4500
Reinforcement Bars, Epoxy Coated	Pound	1450
Precast Concrete Box Culvert 2'x8'	Foot	129

POINT DESIGNATION

LETTER	STATION	OFFSET	ELEVATION
(A)	114+45.29	66.24' LT	531.40
(B)	114+41.32	56.74' LT	531.41
(C)	113+91.54	62.27' RT	531.49
(D)	113+87.57	71.77' RT	531.50



Mark S. Wylie Date 9/19/05
MARK S. WYLIE
ILLINOIS STRUCTURAL ENGINEER
NO. 081-005002
Exp. Date 11/30/06

REVISIONS NAME	DATE

ILLINOIS DEPARTMENT OF TRANSPORTATION
GENERAL PLAN AND ELEVATION
CULVERT @ STATION 114+17.59
F.A.I. 80 (I-80)
SECTION 32-3HBR-1
GRUNDY COUNTY

DESIGNED BY: JML
DATE: 09/09/05

DRAWN BY: DJM
CHECKED BY: MSW