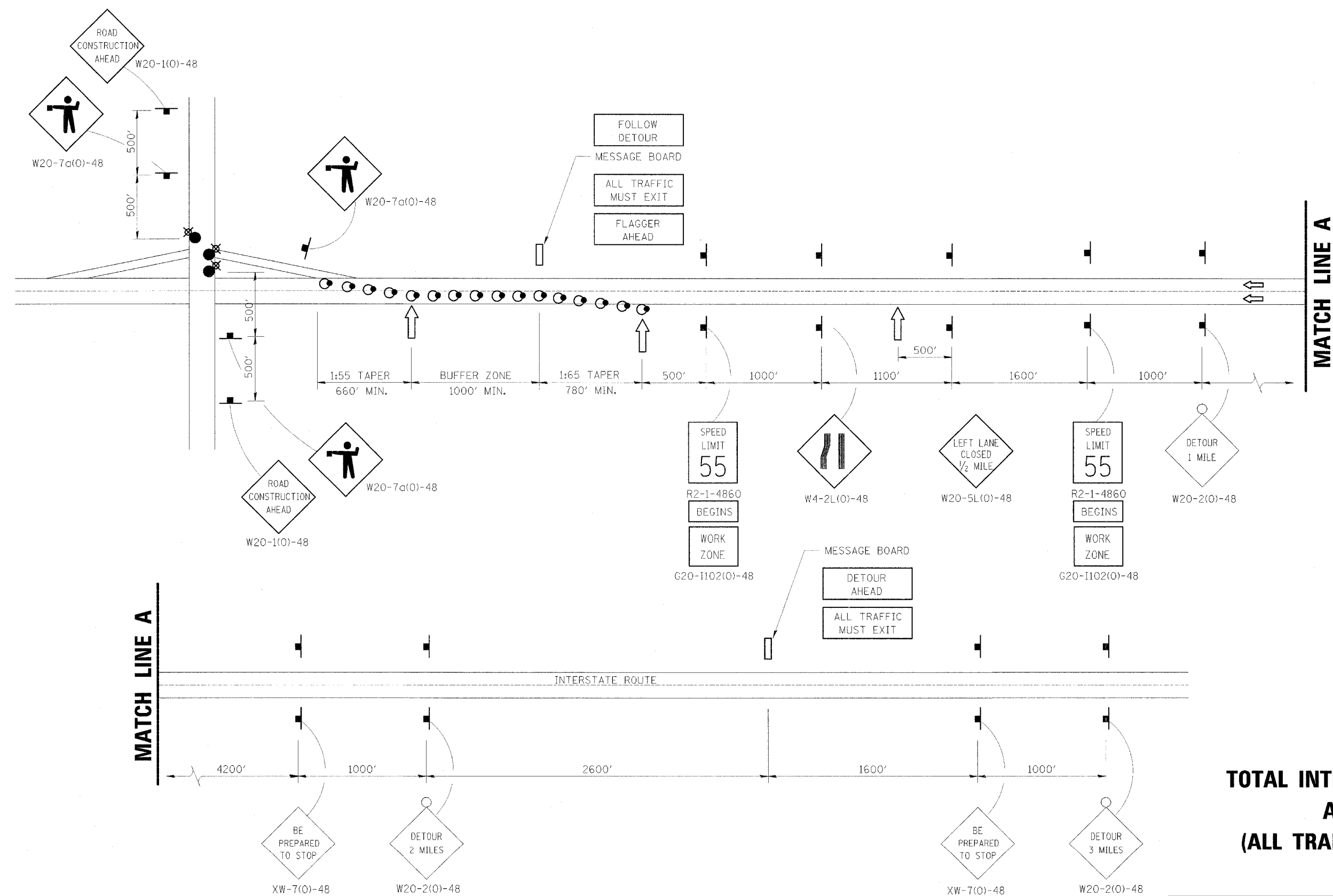


F.A.I. RTE.	SECTION	COUNTY	TOTAL SHEETS	SHEET NO.
80	32-3HBR-1	GRUNDY	88	69
STA.		TO STA.		
FED. ROAD DIST. NO.	ILLINOIS	FED. AID PROJECT		

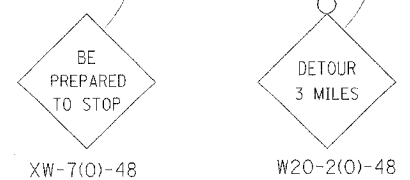
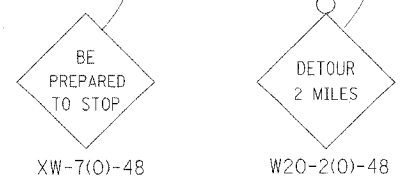


MATCH LINE A

MATCH LINE A

INTERSTATE ROUTE

**TOTAL INTERSTATE CLOSURE  
AT NIGHT  
(ALL TRAFFIC MUST EXIT)**



- DRUMS WITH STEADY BURNING LIGHTS  
50' IN TAPERS AND 100' IN TANGENT ON CENTERS
- LIGHTED FLAGGER STATIONS
- ARROWBOARD

REVISIONS	
NAME	DATE

ILLINOIS DEPARTMENT OF TRANSPORTATION  
DISTRICT DETAILS  
F.A.I. 80 (I-80)  
SECTION 32-3HBR-1  
GRUNDY COUNTY

DATE: 09/09/05  
DRAWN BY: JJO  
CHECKED BY: MSW