

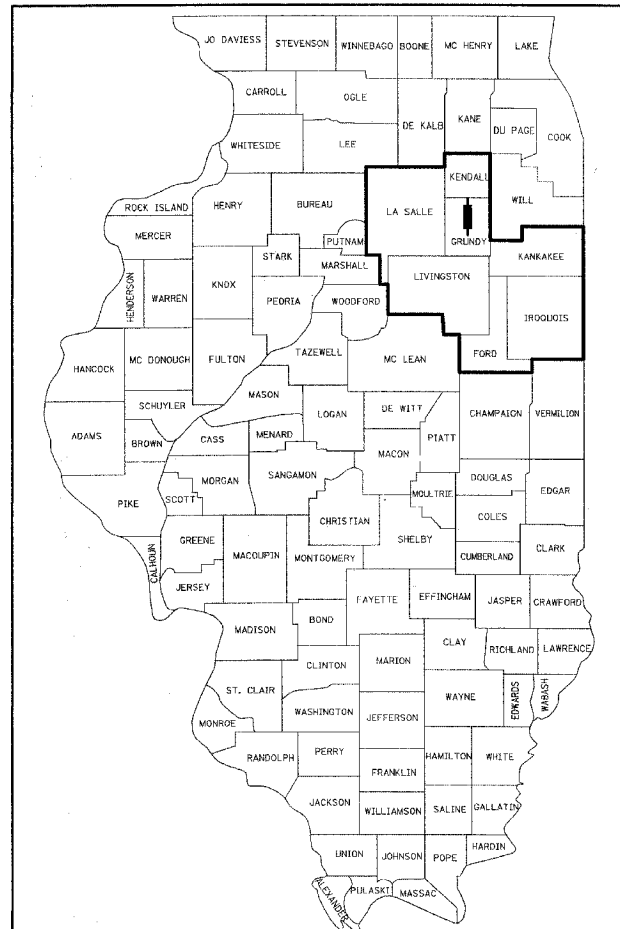
**STATE OF ILLINOIS
DEPARTMENT OF TRANSPORTATION
DIVISION OF HIGHWAYS**

PLANS FOR PROPOSED FEDERAL AID HIGHWAY IMPROVEMENT

RECEIVED
STUDIES & PLANS
SEP 13 2005
SECT. ENGR.
ENVIRONMENTAL
ESTIMATIONS
DESIGN TESTS
HYDRAULICS
LOCATIONS
PLANS ENGR.
SCHEMATIC
TRACING

FAI RTE	SECTION	COUNTY	TOTAL SHEETS	SHEET NO.
80	32-3HBR-1	GRUNDY	88	1
F.H.W.A. REG.			ILLINOIS PROJECT	+1
				= 89 total sheets

D - 93-010-04 P 93-022-03



LOCATION OF SECTION INDICATED THIS:

**F.A.I. 80 (I-80)
SECTION 32-3HBR-1
GRUNDY COUNTY
C-93-005-04
PROJECT BRI-IM-080-3(120)113**

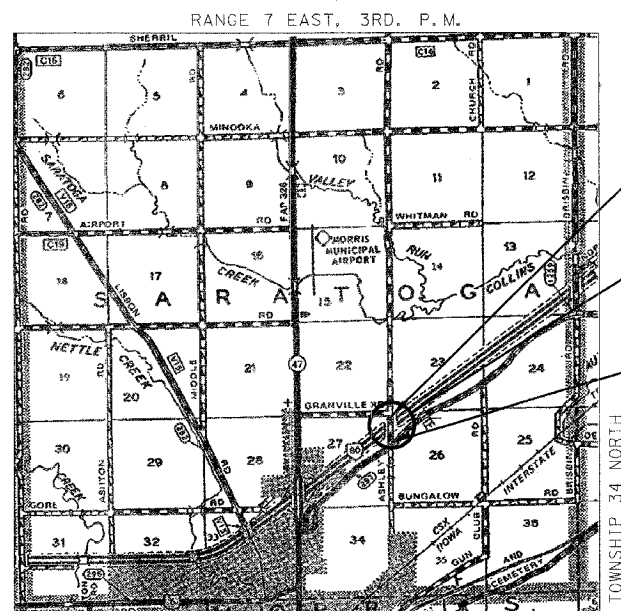
DESIGN DESIGNATION

ASHLEY ROAD
SPEED LIMIT: 55 MPH
ADT = 710 (2003) 750 (2006)
% SU = 3.0%
% MU = 3.0%

HIGHWAY CLASSIFICATION

MINOR ARTERIAL (URBAN)
SURVEY BOOK NOS.
FARNSWORTH GROUP, INC. - BOOK 2595 & 2594

THIS PROJECT INVOLVES THE REMOVAL AND REPLACEMENT OF EXIST. S.N. 032-0057 WHICH CARRIES ASHLEY ROAD OVER I 80, WHICH IS LOCATED 1.3 MILES EAST OF MORRIS.

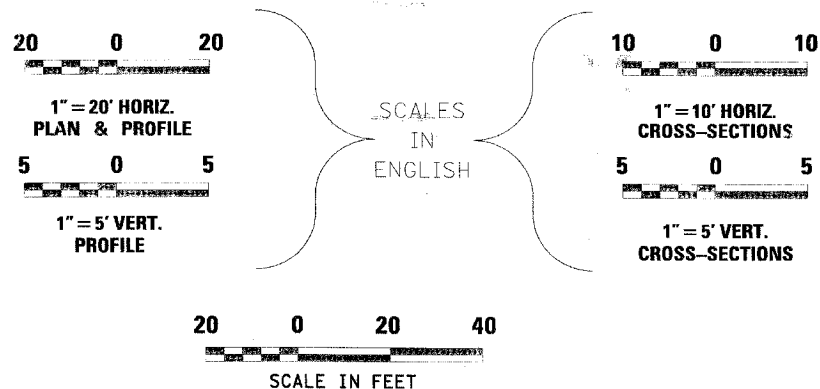


LOCATION MAP

3 2 1 0 1 2 3 MILES
APPROXIMATE SCALE

GROSS LENGTH OF IMPROVEMENT = 1830 FEET = (0.35 MILES)
NET LENGTH OF IMPROVEMENT = 1830 FEET = (0.35 MILES)

SEE SHEET NO. 2 FOR INDEX TO SHEETS



FULL SIZE PLANS HAVE BEEN PREPARED USING STANDARD ENGINEERING SCALES, REDUCED SIZED PLANS WILL NOT CONFORM TO STANDARD SCALES, IN MAKING MEASUREMENTS ON REDUCED PLANS, THE ABOVE SCALES MAY BE USED.

MICROFILMED _____
REEL NUMBER _____
AWARDED _____
RESIDENT ENGINEER _____
AS BUILT CHANGES WERE MADE _____
ON THE FOLLOWING SHEETS _____

JULIE 1-800-892-0123

DISTRICT 3 NO. (815) 434-6131

PROJECT ENGINEER: Mr. DAVE BROVIAK
UNIT CHIEF: Mr. SCOTT FERGUSON
TOWNSHIP: SARATOGA

CONTRACT NO. 66407

FARNSWORTH GROUP, INC.

IMPROVEMENT BEGINS STA. 100+95
S.N. 032-0113
A TWO SPAN COMPOSITE PLATE GIRDER BRIDGE WITH CONCRETE DECK ON A CONCRETE PIER AND CONCRETE ABUTMENTS. THE BACK TO BACK OF ABUTMENTS IS 251'-0" OUT TO OUT IS 35'-2".

IMPROVEMENT ENDS STA. 120+60



Mark S. Wylie Date 9/19/05
MARK S. WYLIE
REGISTERED PROFESSIONAL ENGINEER
NO. 062-043716
EXPIRATION 11/30/05

Farnsworth GROUP
2709 McGraw Drive
Bloomington, Illinois 61704
309/663-8435, 309/663-1571 fax
PRINTED BY THE AUTHORITY OF THE STATE OF ILLINOIS

STATE OF ILLINOIS
DEPARTMENT OF TRANSPORTATION
DIVISION OF HIGHWAYS

SUBMITTED October 26 2005
Deputy Director of Highways, Region Engineer
February 3, 2006
Mike Stee, P.E.
ENGINEER OF DESIGN AND ENVIRONMENT
February 3, 2006
Melton R. See, P.E.
DIRECTOR, DIVISION OF HIGHWAYS