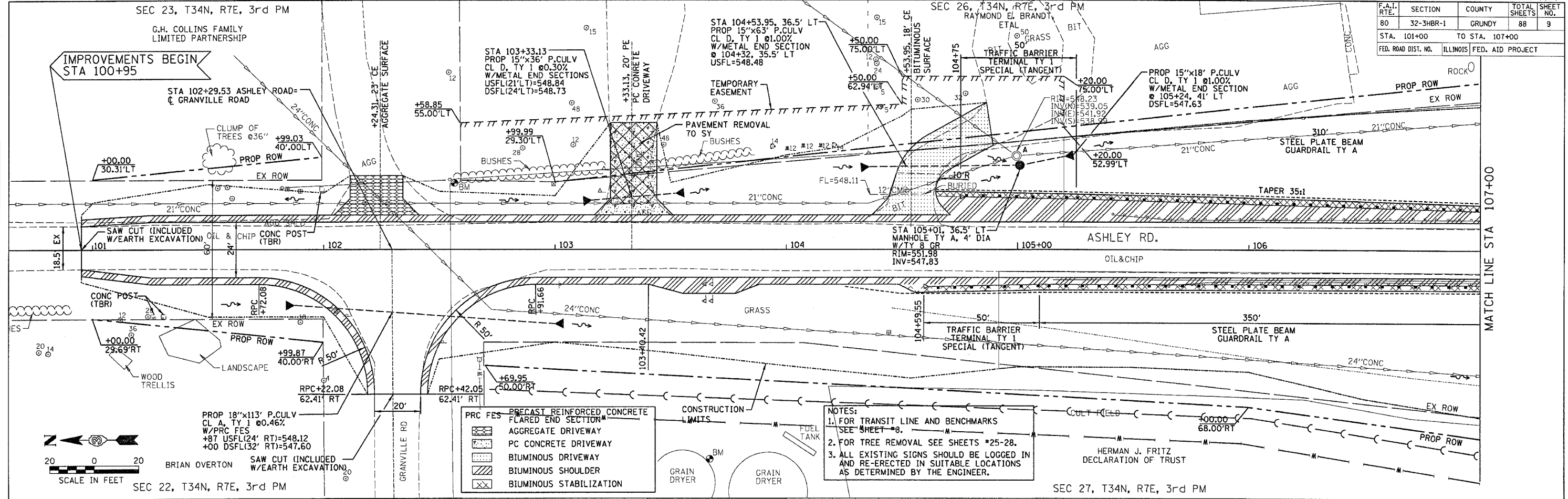
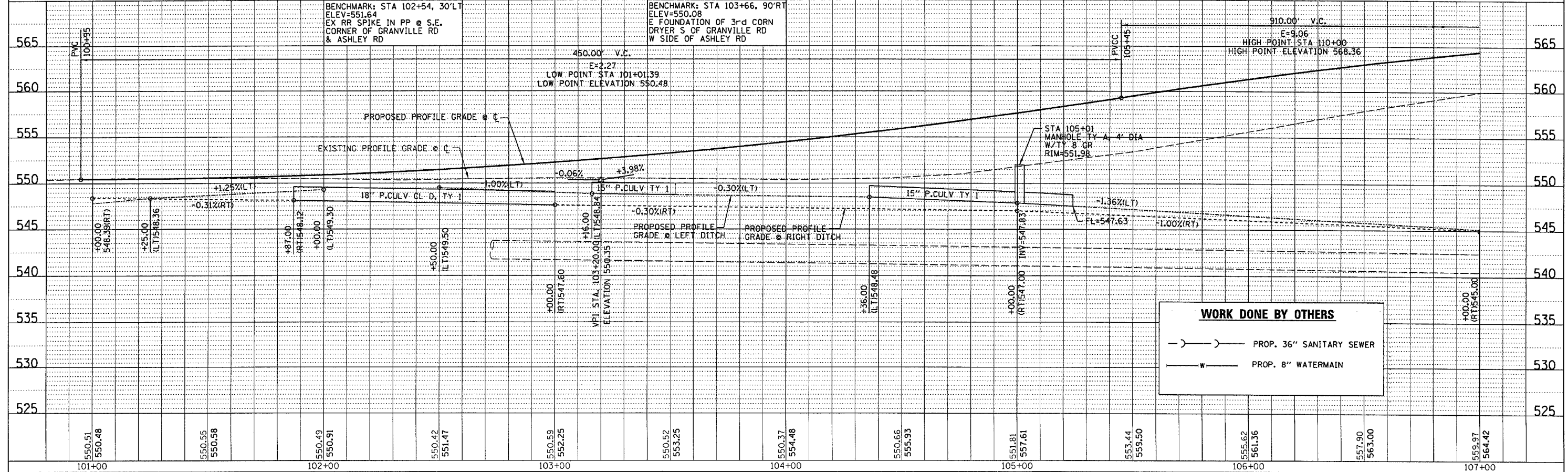


F.A.I. RTE.	SECTION	COUNTY	TOTAL SHEETS	SHEET NO.
80	32-3HR-1	GRUNDY	88	9
STA. 101+00		TO STA. 107+00		
FED. ROAD DIST. NO.		ILLINOIS		FED. AID PROJECT

DATE: \_\_\_\_\_  
 BY: \_\_\_\_\_  
 CHECKED: \_\_\_\_\_  
 DATE: \_\_\_\_\_



DATE: \_\_\_\_\_  
 BY: \_\_\_\_\_  
 CHECKED: \_\_\_\_\_  
 DATE: \_\_\_\_\_



**PRC FES - PRECAST REINFORCED CONCRETE**

- FLARED END SECTION
- AGGREGATE DRIVEWAY
- PC CONCRETE DRIVEWAY
- BITUMINOUS DRIVEWAY
- BITUMINOUS SHOULDER
- BITUMINOUS STABILIZATION

- NOTES:**
1. FOR TRANSIT LINE AND BENCHMARKS SEE SHEET #8.
  2. FOR TREE REMOVAL SEE SHEETS #25-28.
  3. ALL EXISTING SIGNS SHOULD BE LOGGED IN AND RE-ERECTED IN SUITABLE LOCATIONS AS DETERMINED BY THE ENGINEER.

**WORK DONE BY OTHERS**

- PROP. 36" SANITARY SEWER
- PROP. 8" WATERMAIN