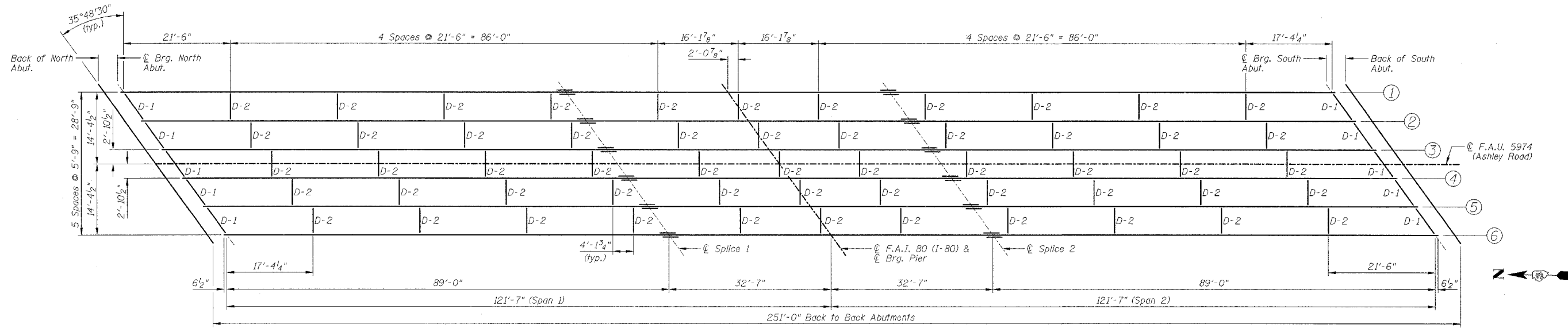


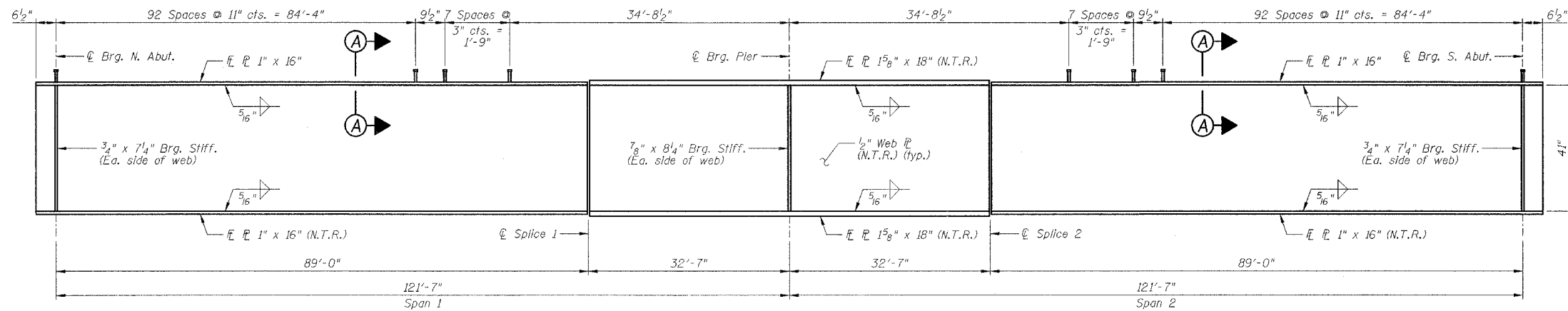
STATE OF ILLINOIS  
DEPARTMENT OF TRANSPORTATION

F.A.I. RTE.	SECTION	COUNTY	TOTAL SHEETS	SHEET NO.
80	32-3HBR-1	GRUNDY	88	41
STA.		TO STA.		
FED. ROAD DIST. NO.		ILLINOIS FED. AID PROJECT		

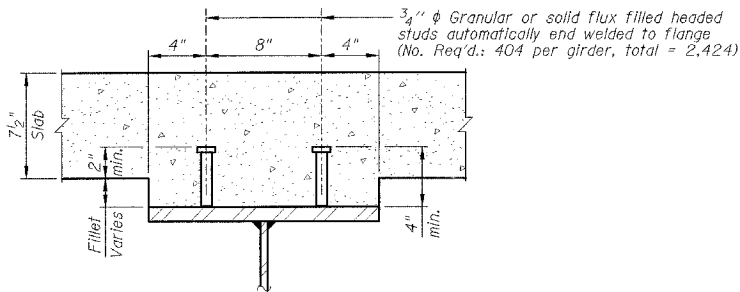
SHEET NO. B14  
OF 35 SHEETS



FRAMING PLAN



GIRDER ELEVATION



SECTION A-A

NOTES:

- 1.) All girder flange plates and web plates shall be AASHTO M270, Gr50.
- 2.) N.T.R. denotes plates to which Notch Toughness Requirements are applicable.
- 3.) Work this sheet with Sheets B15 & B16.

REVISIONS		ILLINOIS DEPARTMENT OF TRANSPORTATION STRUCTURAL STEEL FRAMING PLAN F.A.I. 80 (I-80) F.A.U. 5974 (ASHLEY ROAD) OVER I-80 SECTION 32-3HBR-1 GRUNDY COUNTY STATION 110+00.00 STRUCTURE NO. 032-0113 DESIGNED BY: JML DATE: 09/09/05
NAME	DATE	
		DRAWN BY: DJM CHECKED BY: MSW