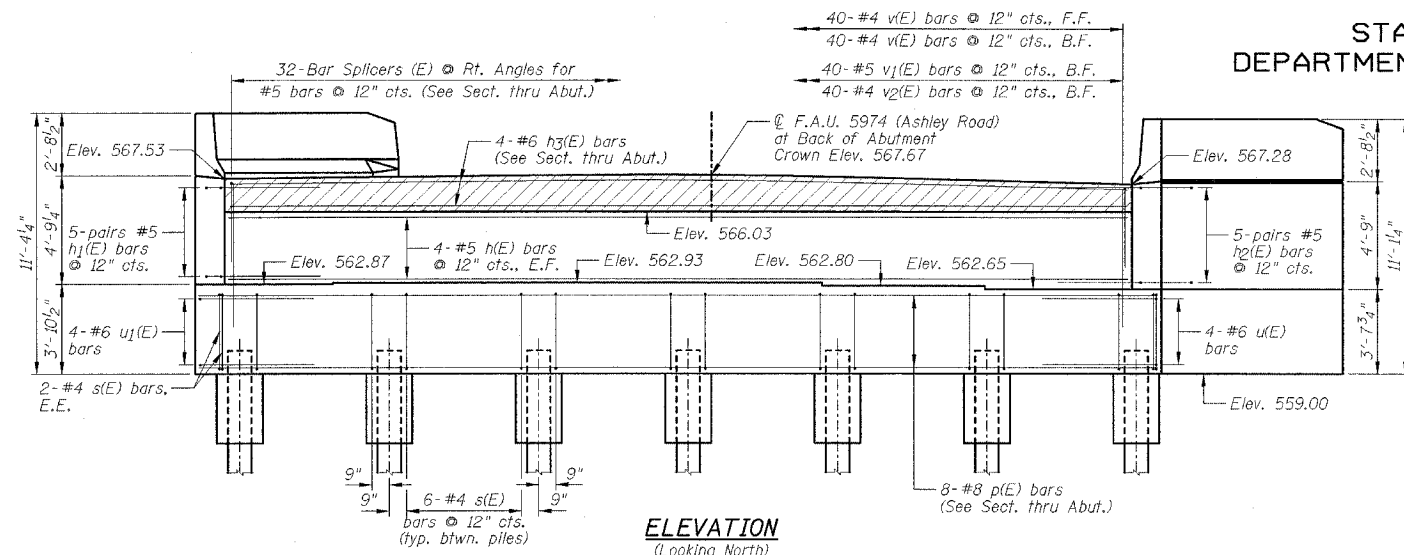


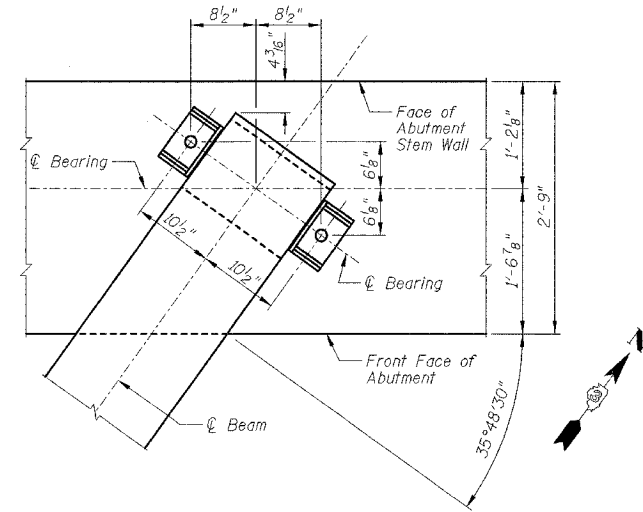
STATE OF ILLINOIS
DEPARTMENT OF TRANSPORTATION

F.A.I. RTE.	SECTION	COUNTY	TOTAL SHEETS	SHEET NO.
80	32-3HBR-1	GRUNDY	88	46
STA.		TO STA.		
FED. ROAD DIST. NO.		ILLINOIS FED. AID PROJECT		

SHEET NO. B19
OF 35 SHEETS



ELEVATION
(Looking North)



**TYPICAL ANCHOR BOLT
PLACEMENT DETAIL**

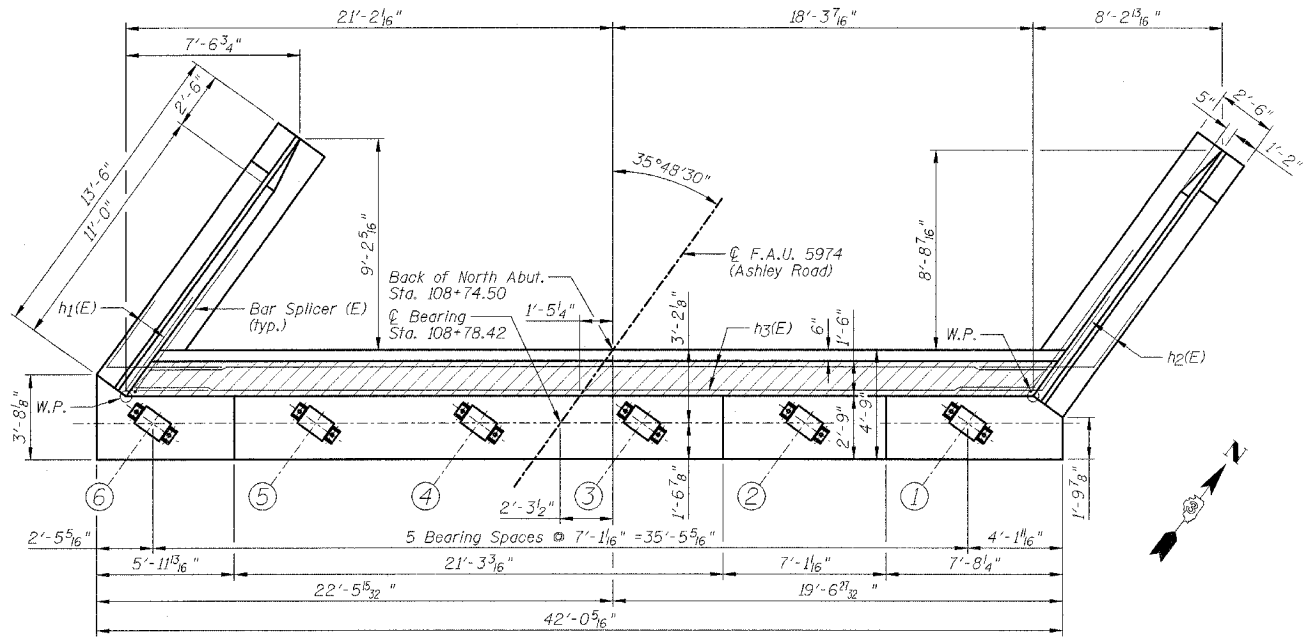
**NORTH ABUTMENT
BILL OF MATERIAL**

Bar	No.	Size	Length	Shape
h(E)	8	#5	39'-1"	
h1(E)	10	#5	8'-7"	L
h2(E)	10	#5	8'-7"	L
h4(E)	4	#6	7'-2"	L
h5(E)	8	#6	8'-4"	L
h6(E)	14	#4	13'-3"	
h7(E)	22	#4	13'-2"	
n(E)	24	#6	12'-2"	
n1(E)	12	#6	6'-1"	
p(E)	8	#8	41'-8"	
p1(E)	12	#7	12'-0"	
s(E)	40	#4	16'-2"	
s1(E)	26	#4	9'-5"	
u(E)	4	#6	14'-4"	
u1(E)	4	#6	13'-4"	L
v(E)	80	#4	5'-0"	
v1(E)	40	#5	2'-0"	
v2(E)	40	#4	3'-0"	
v3(E)	28	#6	7'-4"	
v4(E)	6	#6	7'-4"	
v5(E)	24	#6	7'-6"	

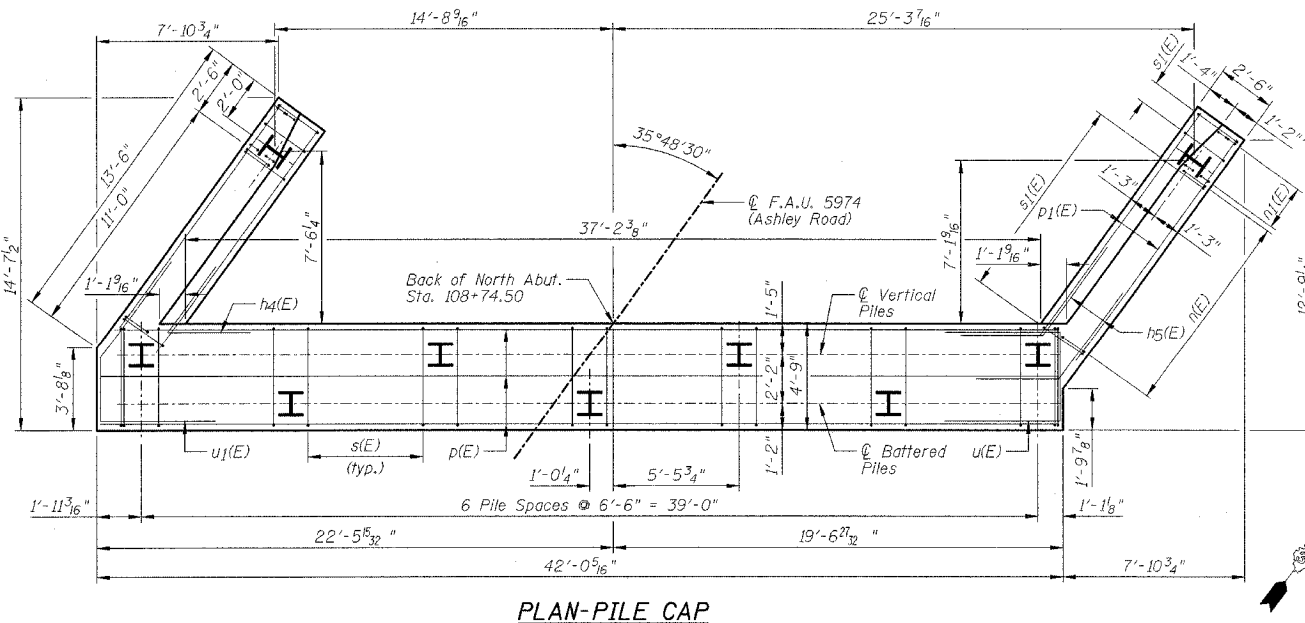
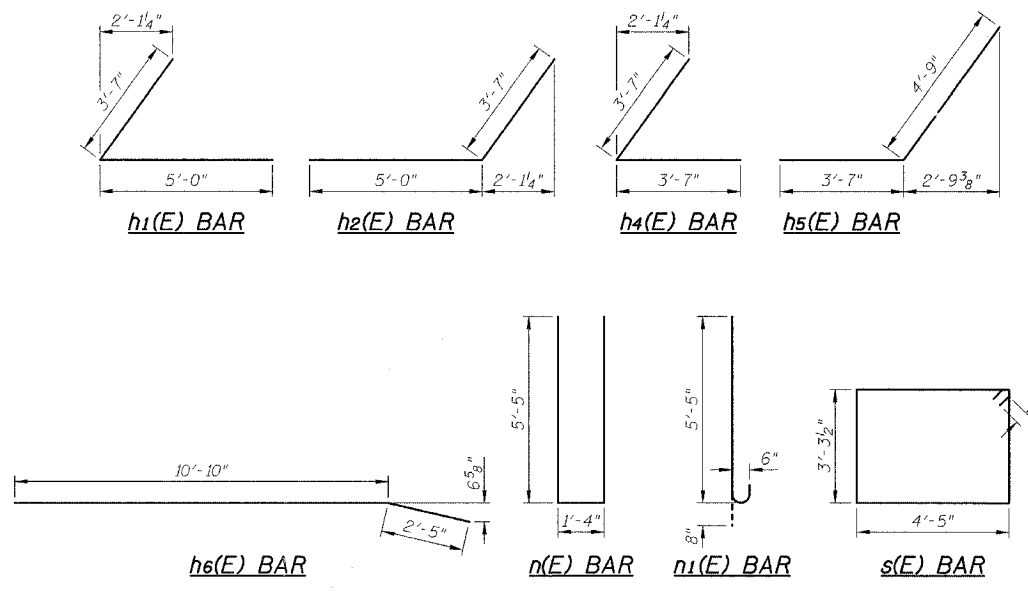
Item	Unit	Quantity
Porous Granular Embankment	Cu Yd	80
Structure Excavation	Cu Yd	450
Concrete Structures	Cu Yd	51.7
Reinforcement Bars, Epoxy Coated	Pound	4560
Furlishing Steel Piles (HP12x63)	Foot	512
Test Piles HP12x63	Each	1
Driving Steel Piles	Foot	512
Bridge Seat Sealer	Sq Ft	116
Bar Splicers	Each	32

PILE DATA:

Type	HP12x63 Steel
No. Req'd.	8+1 Test Pile
Est. Length	64 Feet
Capacity	Drive to Refusal



TOP VIEW



PLAN-PILE CAP

NOTES:

- 1.) Work this sheet with Sheets B2, B4 & B20.
- 2.) Space reinforcement in cap to miss anchor bolts.
- 3.) Reinforcement bars designated (E) shall be epoxy coated.
- 4.) Four steps monolithically with cap.
- 5.) B.F. denotes Back Face, F.F. denotes Front Face, E.E. denotes Each End.
- 6.) h3(E) bars are included with the Superstructure Quantities on Sheet B11.

REVISIONS	
NAME	DATE

ILLINOIS DEPARTMENT OF TRANSPORTATION
NORTH ABUTMENT
F.A.I. 80 (I-80)
F.A.U. 5974 (ASHLEY ROAD) OVER I-80
SECTION 32-3HBR-1
GRUNDY COUNTY
STATION 110+00.00 STRUCTURE NO. 032-0113
DESIGNED BY: JML DRAWN BY: DJM
DATE: 09/09/05 CHECKED BY: MSW