

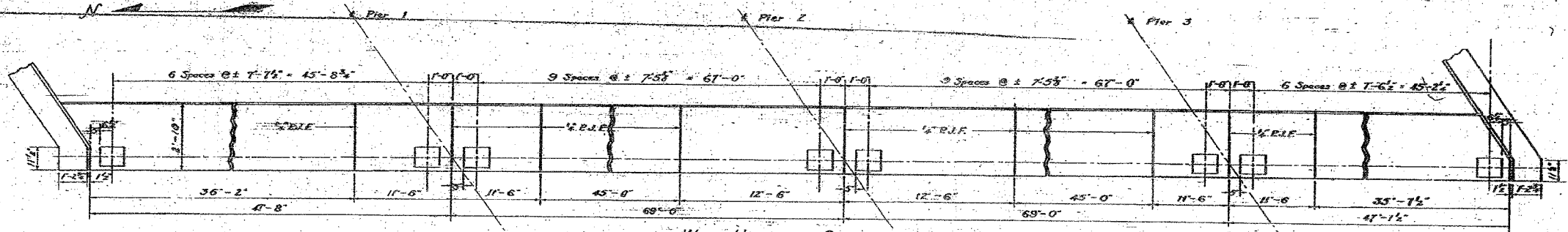
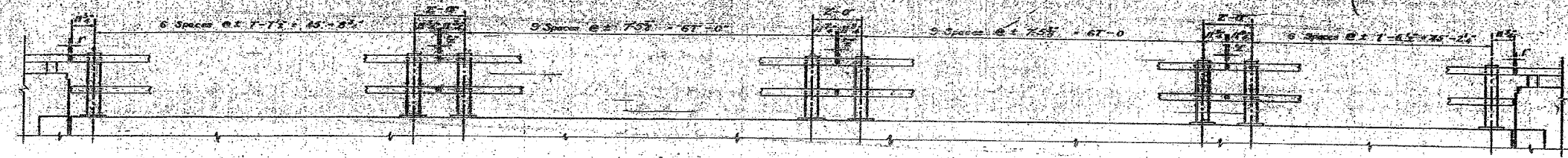
STATE OF ILLINOIS  
DEPARTMENT OF TRANSPORTATION

F.A.I. RTE.	SECTION	COUNTY	TOTAL SHEETS	SHEET NO.
80	32-3HBR-1	GRUNDY	88	57
STA.		TO STA.		
FED. ROAD DIST. NO.		ILLINOIS FED. AID PROJECT		

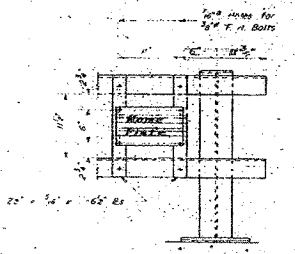
SHEET NO. B30  
OF 35 SHEETS

STATE OF ILLINOIS  
DEPARTMENT OF PUBLIC WORKS & BUILDINGS  
DIVISION OF HIGHWAYS

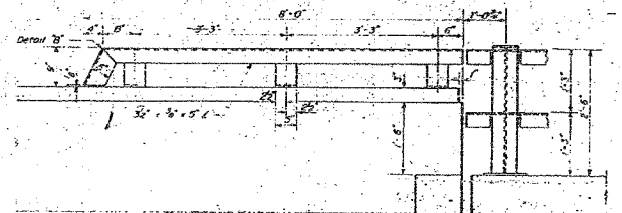
DATE	BY	REVISION



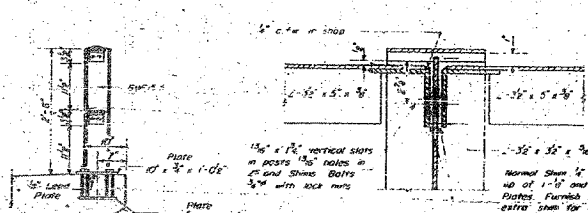
**WEST HANDRAIL SPACING**  
East Handrail Similar Except Opposite Hand  
Note - Rail posts shall be vertical.



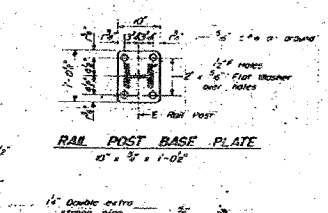
NAME PLATE CONNECTION DETAIL  
Erect Name Plate @ N.W. Corner Only



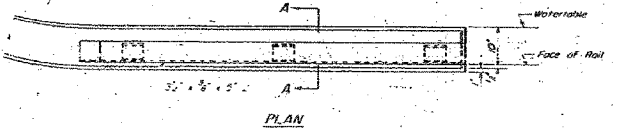
ELEVATION



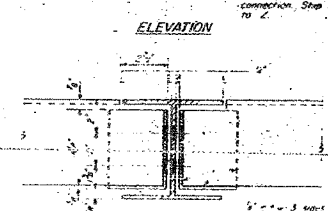
SECTION B-B



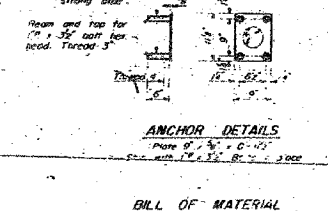
RAIL POST BASE PLATE



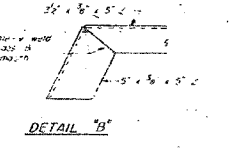
PLAN



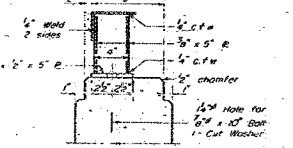
ELEVATION



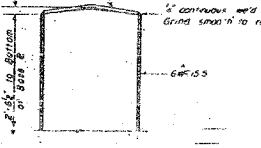
ANCHOR DETAILS



DETAIL B



SECTION A-A



CAP DETAIL  
Side View

**BILL OF MATERIAL**

Material	Quantity	Notes

**ALTERNATE "A"**  
**HANDRAIL DETAIL**  
BRIDGE OVER F.A.I. RT. 6  
F.A.I. RT. 6 SEC. 32-3HBR-1  
GRUNDY COUNTY  
STA. 1266 + 24.59 (FAL6)

FOR INFORMATIONAL  
USE ONLY

DESIGNED	T. Tambo	DATE	NOV 14 1957
CHECKED			
DRAWN			
CHECKED			

END POST DETAILS

REVISIONS	
NAME	DATE

ILLINOIS DEPARTMENT OF TRANSPORTATION  
EXISTING PLANS  
F.A.I. 80 (I-80)  
F.A.U. 5974 (ASHLEY ROAD) OVER I-80  
SECTION 32-3HBR-1  
GRUNDY COUNTY  
STATION 110+00.00 STRUCTURE NO. 032-0113  
DESIGNED BY: JML  
DRAWN BY: DJM  
DATE: 09/09/05  
CHECKED BY: MSW