

F.A.I. RTE.	SECTION	COUNTY	TOTAL SHEETS	SHEET NO.
80	32-3HBR-1	GRUNDY	88	58
STA.		TO STA.		
FED. ROAD DIST. NO.		ILLINOIS FED. AID PROJECT		

SHEET NO. B31
OF 35 SHEETS

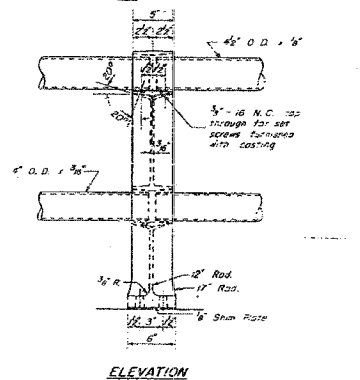
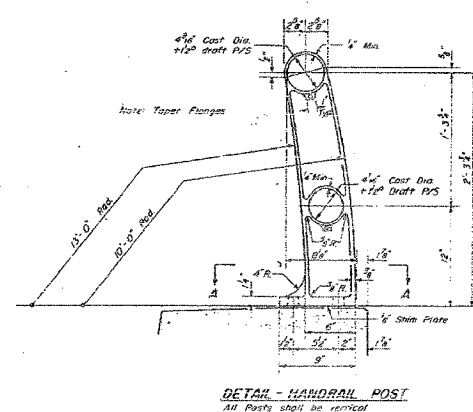
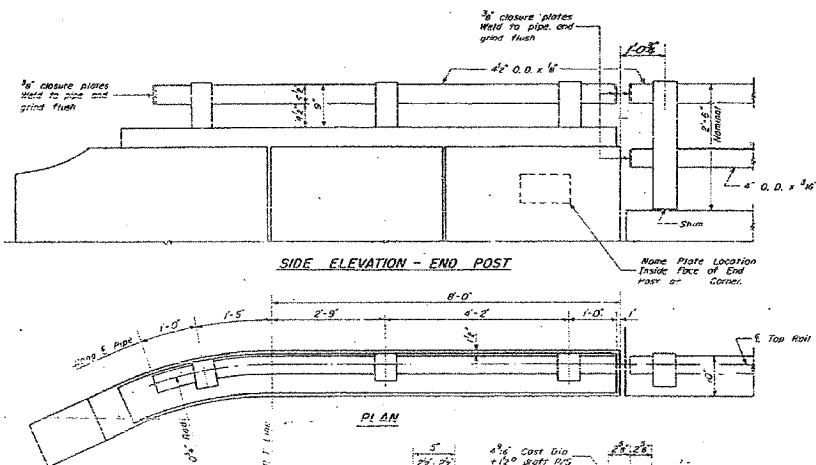
STATE OF ILLINOIS
DEPARTMENT OF TRANSPORTATION

STATE OF ILLINOIS
DEPARTMENT OF PUBLIC WORKS & BUILDINGS
DIVISION OF HIGHWAYS

DATE	ISSUED	BY	NO.	REVISION
10/9	10/9	Grundy	10	9

SHEET NO. 5
OF 9 SHEETS

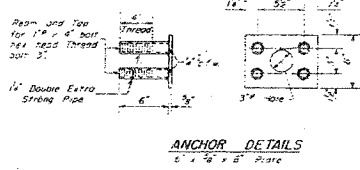
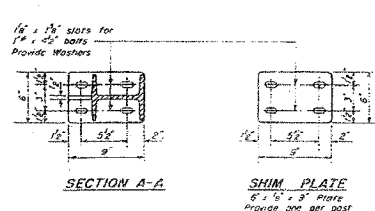
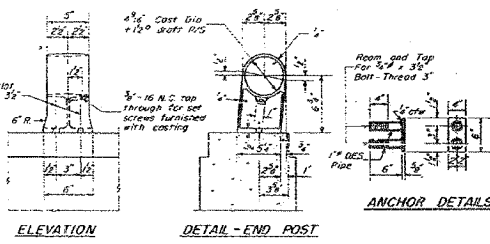
Note: Face spacing of Rail Posts see sheet #4



CALL OF MATERIAL
Aluminum Handrail 1 1/2" Dia. x 308

Notes
Aluminum Handrail Post (Parapost Cast) shall conform to ASTM Spec B-108-54F Alloy 5052, condition T-6.
Aluminum Alloy Extruded Tube shall conform to ASTM Spec B241-56T alloy 6061 condition T6.
Aluminum Alloy Shims shall be made from sheet or plate conforming to ASTM Spec B209-54T alloy 5052 condition D.
Aluminum Alloy Bars shall be made from rod conforming to ASTM Spec B211-56T Alloy 6061-A Bar ends shall conform to American Standard regular hexagon, ASA Spec B-18.2. Threads shall conform to American Standard coarse series, Class 2, 2A or 2B. The finished ends shall be chamfered to the 1/4" taper, given an inside coating of least .0002 inches in thickness and chamfered edges.
Aluminum Alloy Washers shall be made from sheet conforming to ASTM Spec B209-54T Alloy Class 5052-A Condition T6.
Anchor Details shall conform to Structural Carbon Steel ASTM A17-50T.
Where Aluminum alloys come in contact with masonry, the contacting surfaces shall be treated with an aluminum uncoated coating compound.

DESIGNED	T. Tavel	EXAMINED	Nov 14 1957
CHECKED	A. R. R.	PASSED	
DRAWN	A. R. R.	APPROVED	
CHECKED	A. R. R.		



ALTERNATE 'B' HANDRAIL DETAIL
BRIDGE OVER F.A.I. RT. 6
F.A.I. RT. 6 SEC. 32-3HBR-1
GRUNDY COUNTY
Sta. 1266+24.53 (F.A.I.-C)

FOR INFORMATIONAL
USE ONLY

REVISIONS		ILLINOIS DEPARTMENT OF TRANSPORTATION EXISTING PLANS F.A.I. 80 (I-80) F.A.U. 5974 (ASHLEY ROAD) OVER I-80 SECTION 32-3HBR-1 GRUNDY COUNTY STATION 110+00.00 STRUCTURE NO. 032-0113 DESIGNED BY: JML DATE: 09/09/05
NAME	DATE	
		DRAWN BY: DJM CHECKED BY: MSW