

F.A.I. RTE.	SECTION	COUNTY	TOTAL SHEETS	SHEET NO.
80	32-3HBR-1	GRUNDY	88	63
STA.		TO STA.		
FED. ROAD DIST. NO.		ILLINOIS FED. AID PROJECT		

STATE OF ILLINOIS  
DEPARTMENT OF TRANSPORTATION

Benchmarks: 1.) Existing railroad spike in power pole @ S.E. corner of Granville Rd. & Ashley Rd. @ Station 102+56.46/28.81' LT., Elevation = 551.64  
2.) Existing railroad spike in power pole @ N.W. corner of Rte. 6 & Ashley Rd. @ Station 120+38.15/33.68' RT., Elevation = 549.25.

Existing Structure: Existing Culvert, built 1957, Section 32-3 HBR-1 at Station 114+17.59 and carries F.A.U. Route 5974 (Ashley Road) over an unnamed creek. Consists of a single 12'x8' reinforced concrete box culvert and the out to out headwall length Traffic will be maintained during construction via detour routes.

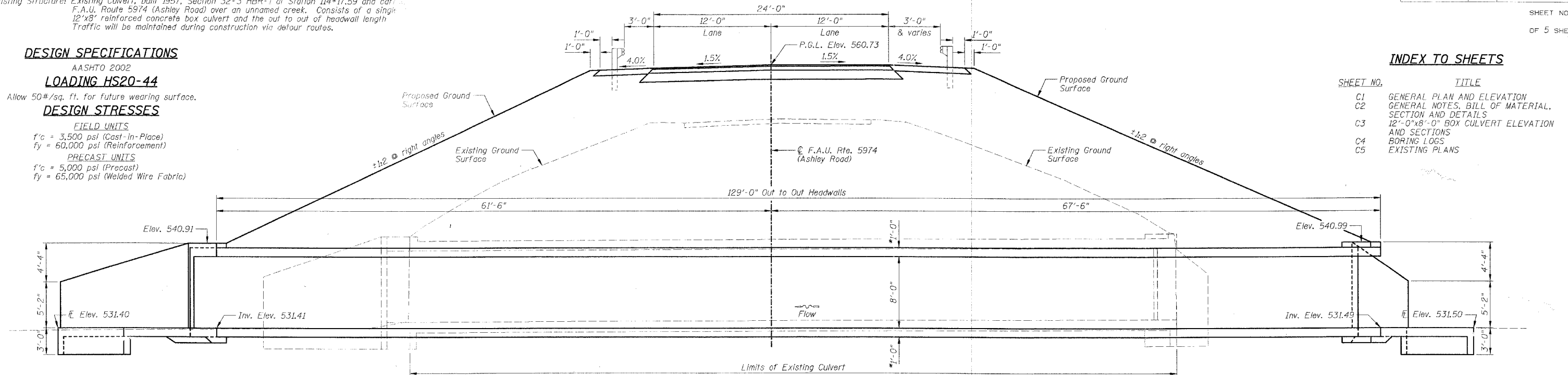
**DESIGN SPECIFICATIONS**

AASHTO 2002  
**LOADING HS20-44**  
Allow 50#/sq. ft. for future wearing surface.  
**DESIGN STRESSES**  
**FIELD UNITS**  
f'c = 3,500 psi (Cast-in-Place)  
fy = 60,000 psi (Reinforcement)  
**PRECAST UNITS**  
f'c = 5,000 psi (Precast)  
fy = 65,000 psi (Welded Wire Fabric)

**INDEX TO SHEETS**

SHEET NO.	TITLE
C1	GENERAL PLAN AND ELEVATION
C2	GENERAL NOTES, BILL OF MATERIAL, SECTION AND DETAILS
C3	12'-0"x8'-0" BOX CULVERT ELEVATION AND SECTIONS
C4	BORING LOGS
C5	EXISTING PLANS

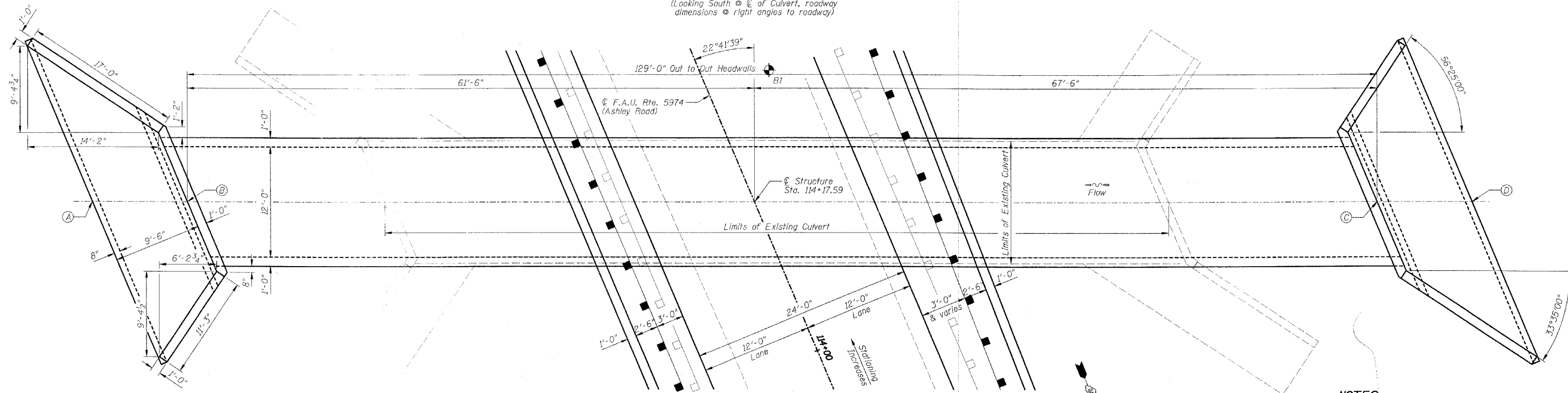
SHEET NO. C1  
OF 5 SHEETS



**LONGITUDINAL SECTION**

(Looking South @ C of Culvert, roadway dimensions @ right angles to roadway)

\*Confirm slab thickness with Precaster.



**PLAN**

**NOTES:**

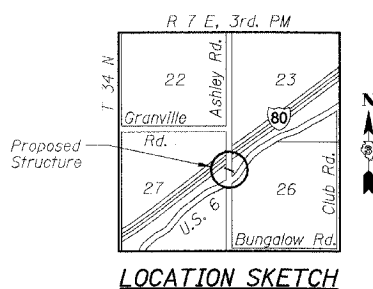
- 1.) Work this sheet with Sheets C2-C4.
- 2.) P.G.L. denotes Profile Grade Line.
- 3.) For riprap locations, see Roadway Plans.

**TOTAL BILL OF MATERIAL - BOX CULVERT**

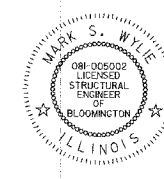
ITEMS	UNITS	TOTAL
Removal of Existing Structures No. 2	Each	1
Concrete Box Culverts	Cu Yd	43.1
Reinforcement Bars	Pound	4500
Reinforcement Bars, Epoxy Coated	Pound	1450
Precast Concrete Box Culvert 2'x8'	Foot	129

**POINT DESIGNATION**

LETTER	STATION	OFFSET	ELEVATION
(A)	114+45.29	66.24' LT	531.40
(B)	114+41.32	56.74' LT	531.41
(C)	113+91.54	62.27' RT	531.49
(D)	113+87.57	71.77' RT	531.50



**LOCATION SKETCH**



Mark S. Wylie Date 9/19/05  
MARK S. WYLIE  
ILLINOIS STRUCTURAL ENGINEER  
NO. 081-005002  
Exp. Date 11/30/06

REVISIONS NAME	DATE

ILLINOIS DEPARTMENT OF TRANSPORTATION  
**GENERAL PLAN AND ELEVATION**  
**CULVERT @ STATION 114+17.59**  
**F.A.I. 80 (I-80)**  
**SECTION 32-3HBR-1**  
**GRUNDY COUNTY**  
DESIGNED BY: JML  
DATE: 09/09/05  
DRAWN BY: DJM  
CHECKED BY: MSW