

F.A.S. RTE.	SECTION	COUNTY	TOTAL SHEETS	SHEET NO.
1324	38 BR-1	IROQUOIS	29	1
STA.		TO STA.		
FED. ROAD DIST. NO.		ILLINOIS	FED. AID PROJECT	

INDEX OF SHEETS

SHEET NO.	DESCRIPTION
1	COVER SHEET, INDEX OF SHEETS AND STANDARDS
2	GENERAL NOTES
3	SUMMARY OF QUANTITIES
4	TYPICAL SECTIONS
5	SCHEDULE OF QUANTITIES
6	REMOVAL PLAN
7	PLAN AND PROFILE SHEETS
8	DETOUR PLAN
9 - 15	BRIDGE PLANS
16 - 22	EXISTING BRIDGE PLANS (FOR INFORMATION ONLY)
23	DISTRICT DETAILS
24 - 29	CROSS SECTIONS

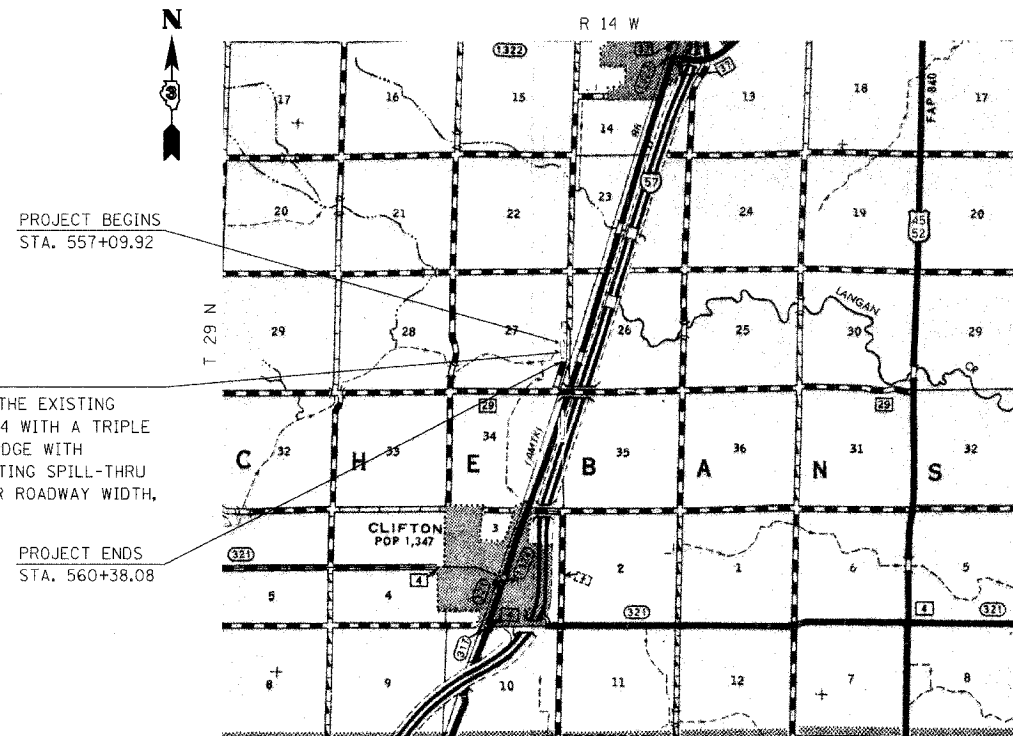
STATE STANDARDS

00001-04	STANDARD SYMBOLS, ABBREVIATIONS AND PATTERNS
001001	AREAS OF REINFORCEMENT REBARS
001006	DECIMAL OF AN INCH AND OF A FOOT
515001-02	NAME PLATE FOR BRIDGES
630001-05	STEEL PLATE BEAM GUARDRAIL
631026-02	TRAFFIC BARRIER TERMINAL, TYPE 5A & 5B
631032-01	TRAFFIC BARRIER TERMINAL, TYPE 6A
635006-02	REFLECTOR AND TERMINAL MARKER PLACEMENT
635011-01	REFLECTOR MARKER AND MOUNTING DETAILS
702001-05	TRAFFIC CONTROL DEVICES
780001-01	TYPICAL PAVEMENT MARKINGS
781001-02	TYPICAL APPLICATIONS RAISED REFLECTIVE PAVEMENT MARKERS
BLR-21-6	TYPICAL APPLICATIONS OF TRAFFIC CONTROL DEVICES

STATE OF ILLINOIS
DEPARTMENT OF TRANSPORTATION
DIVISION OF HIGHWAYS
PROPOSED
HIGHWAY PLANS
FAS 1324 (OLD US RTE. 45)
SECTION 38 BR-1
PROJECT BHS-1324(103)
IROQUOIS COUNTY

C - 93 - 070 - 05
BRIDGE SUPERSTRUCTURE REPLACEMENT

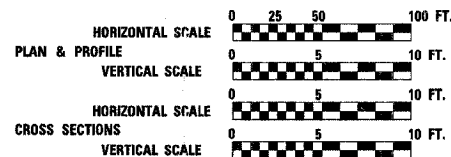
D-93-047-05



SEC. 38 BR-1
CONSISTS OF REMOVING AND REPLACING THE EXISTING STRUCTURE NO. 038-0185 AT STA. 558+74 WITH A TRIPLE SPAN PRECAST CONCRETE DECK BEAM BRIDGE WITH 5' CONCRETE WEARING SURFACE ON EXISTING SPILL-THRU ABUTMENTS AND PIERS WITH A 32' CLEAR ROADWAY WIDTH, AND RELATED ROADWAY WORK.

LOCATION MAP

NET LENGTH OF PROJECT = 328.16 FEET = 0.062 MILES
GROSS LENGTH OF PROJECT = 328.16 FEET = 0.062 MILES



DESIGN DESIGNATION = RURAL MINOR ARTERIAL
2005 ADT = 2250

MICROFILMED _____
REEL NUMBER _____
AWARDED _____
RESIDENT ENGINEER _____
AS BUILT CHANGES WERE MADE
ON THE FOLLOWING SHEETS _____

J.U.L.I.E.
JOINT UTILITY LOCATION INFORMATION FOR EXCAVATION
1-800-892-0123

DISTRICT 3 NO. (815) 434-6131

PROJECT ENGINEER: DAN DRAPER
UNIT CHIEF: PAT BRABOY
TOWNSHIP: CHEBANSE

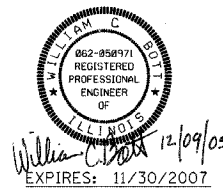
CONTRACT NO. 66564

STATE OF ILLINOIS
DEPARTMENT OF TRANSPORTATION
DIVISION OF HIGHWAYS

SUBMITTED _____ 20
Debra M. Minton
DEPUTY DIRECTOR OF HIGHWAYS, REGION ENGINEER
February 3, 2006
Mike Nene
ENGINEER OF DESIGN AND ENVIRONMENT
February 3, 2006
Milton L. Sees, P.E.
DIRECTOR OF HIGHWAYS, CHIEF ENGINEER

PRINTED BY THE AUTHORITY
OF THE STATE OF ILLINOIS

REVISIONS		G B GREENE & BRADFORD, INC. OF SPRINGFIELD CONSULTING ENGINEERS SPRINGFIELD, ILLINOIS 62782 PROFESSIONAL ENGINEERS, ARCHITECTS, SURVEYORS ILL. REG. NO. 0217-0001, ILL. REG. NO. 0221-0001, ILL. REG. NO. 0221-0002	COMPUTER FILE NO.
NAME	DATE		COVER.DGN
			PROJECT 03236 W010 12/8/05-MML



PLOT DATE = 12/05/05
 FILE NAME = I:\03236\010\DRAWINGS\Cover.dgn
 PLOT SCALE = 50.0000 / IN.
 REFERENCE = REF.
 OPERATOR = pep