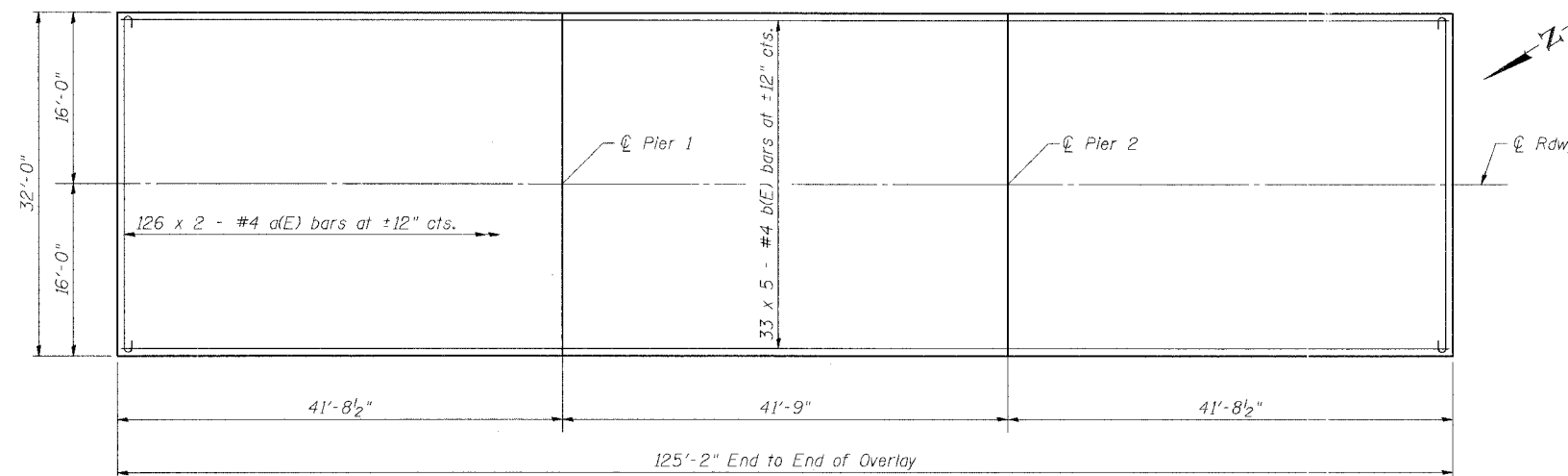


STATE OF ILLINOIS
DEPARTMENT OF TRANSPORTATION

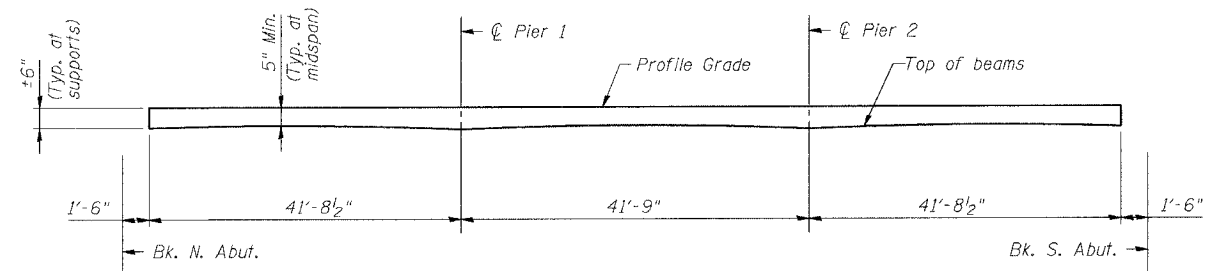
ROUTE NO.	SECTION	COUNTY	STATION	SHEET NO.
FAS 1324	38 BR-1	IROQUOIS	29	10
FED. ROAD DIST. NO.		ILLINOIS	FED. AID PROJECT	

SHEET NO. 2
7 SHEETS

Contract # 66564

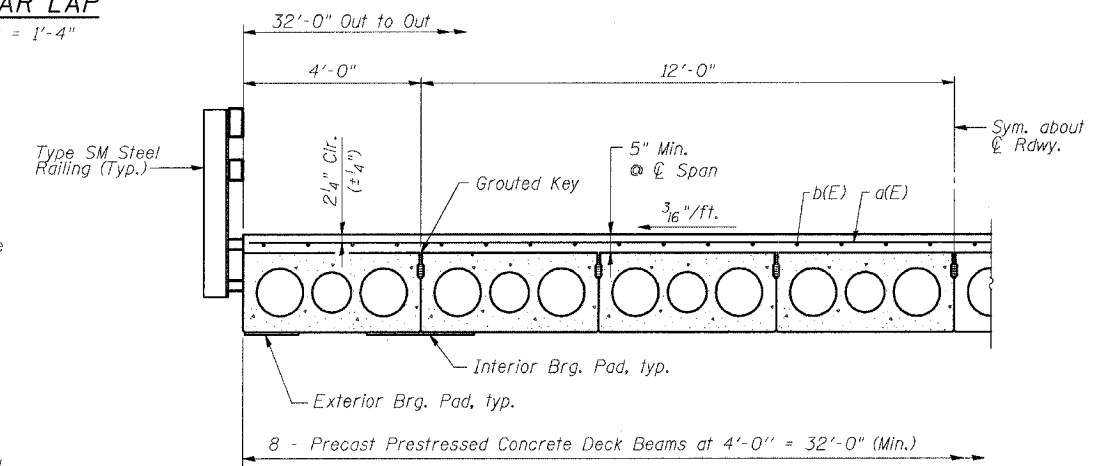


MIN. BAR LAP
#4 bar = 1'-4"



REINFORCED CONCRETE WEARING SURFACE PROFILE

Note:
The thickness of the concrete overlay varies as required to adjust for the profile grade and beam camber.



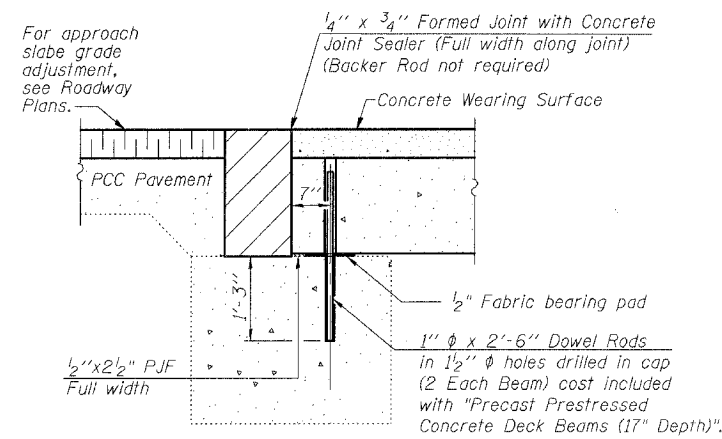
HALF CROSS SECTION

Notes:
After beams have been erected, holes shall be drilled into substructure and anchor dowels placed. Dowel holes shall be filled with non-shrink grout to top of beam and allowed to cure min. 24 hrs. prior to grouting the shear keys.
Hatched area to be poured after concrete wearing surface is in place.
See sheet 3 of 6 for bearing pad details.

BILL OF MATERIAL

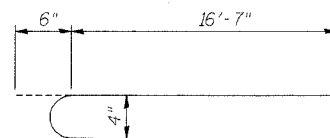
Bar	No.	Size	Length	Shape
a(E)	252	#4	17'-1"	
b(E)	165	#4	26'-1"	
Concrete Wearing Surface, 5"		Sq. Yd.	445	
Reinforcement Bars (Epoxy Coated)		lb.	5650	

Reinforcement bars designated (E) shall be Epoxy Coated.

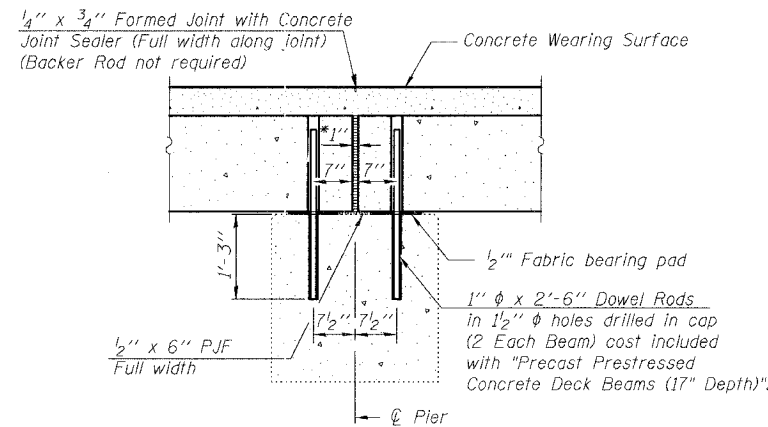


SECTION THRU ABUTMENTS

DECK PLAN

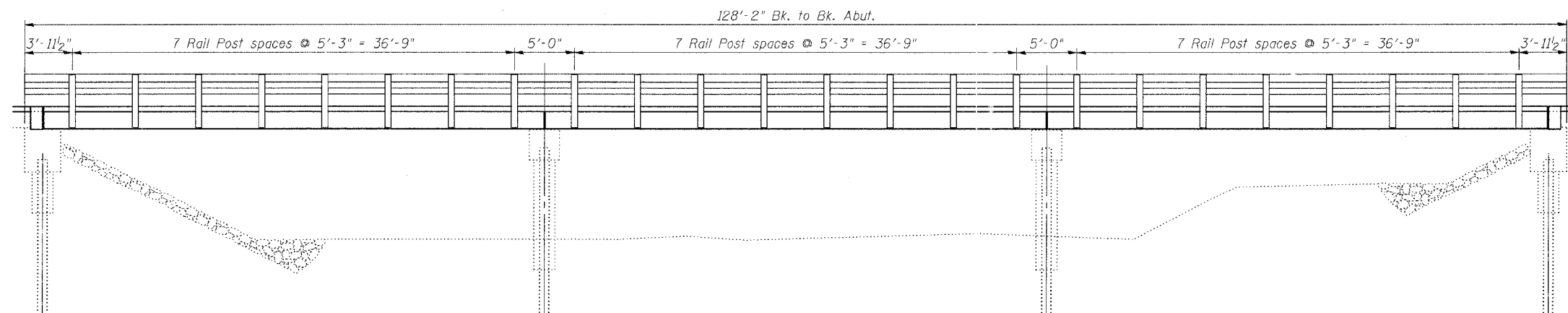


BAR a(E)



SECTION THRU PIERS

* 1" Jt. shall be filled with non-shrink grout. 1" dimension may vary to accommodate tolerance in beam lengths.



RAIL POST SPACING

REVISIONS	
NAME	DATE

ILLINOIS DEPARTMENT OF TRANSPORTATION
SUPERSTRUCTURE DETAILS
OLD US 45 OVER LANGAN CREEK
FAS ROUTE 1324 SECTION 38 BR-1
IROQUOIS COUNTY
STATION 558+74
S.N. 038-0185

SCALE: VERT. HORIZ.
DATE: ***/**/05

DRAWN BY: HEBERLING
DESIGNED BY: SANFORD
CHECKED BY: -

COMPUTER FILE NO.
SN038-0185_SS1.dgn
PROJECT WO-10
03236

GREENE & BRADFORD, INC.
OF SPRINGFIELD
REGISTERED PROFESSIONAL ENGINEERS
PROFESSIONAL DESIGN FIRM NO. 041 0018
PROFESSIONAL SURVEYING LICENSE NO. 0018000
2017 715-8444 2017 715-8277 911 E. W. - 2017 715-8444/2017 715-8277

FILE NAME = H:\03236\WORK\DRAWINGS\SS1\038-0185\SS1.dgn
PLOT SCALE = 1/8"=1'-0"
PLOT DATE = 12/8/2005
PLOT TIME = 8:38:49 AM
OPERATOR = dcvsh