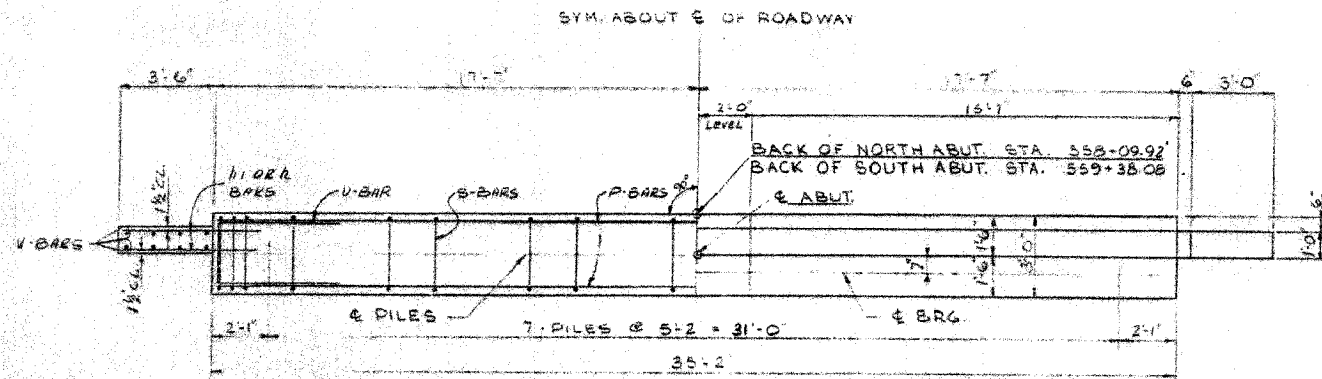


F.A.S. RTE.	SECTION	COUNTY	TOTAL SHEETS	SHEET NO.
1324	38 BR-1	IROQUOIS	29	20
STA.		TO STA.		
FED. ROAD DIST. NO.		ILLINOIS FED. AID PROJECT		

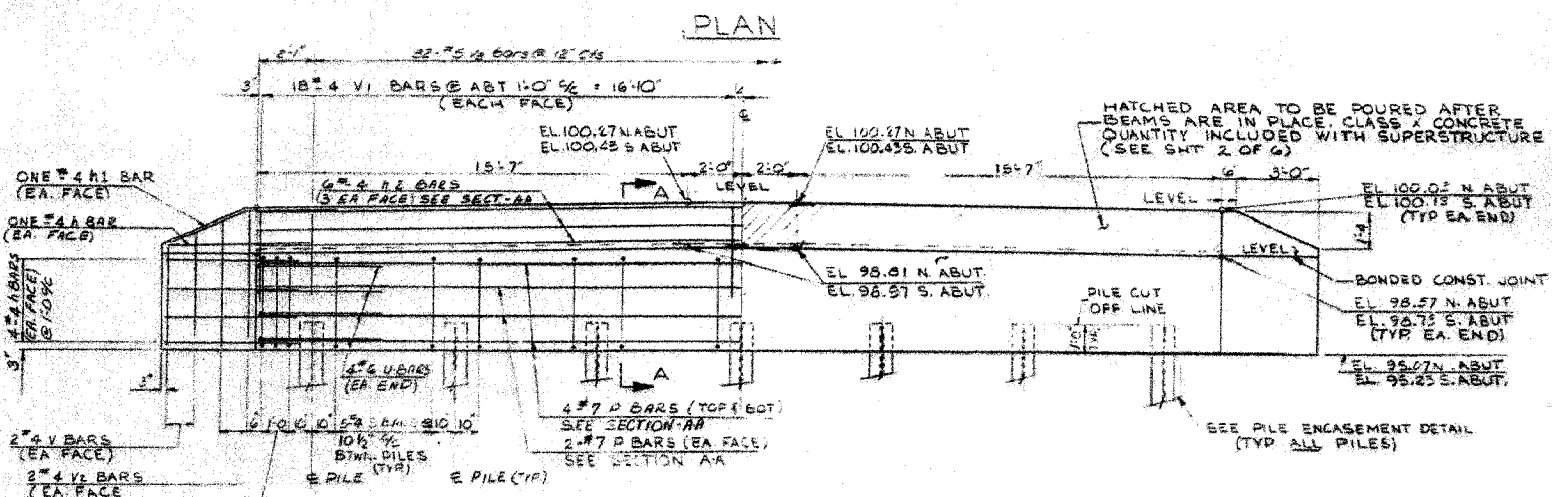
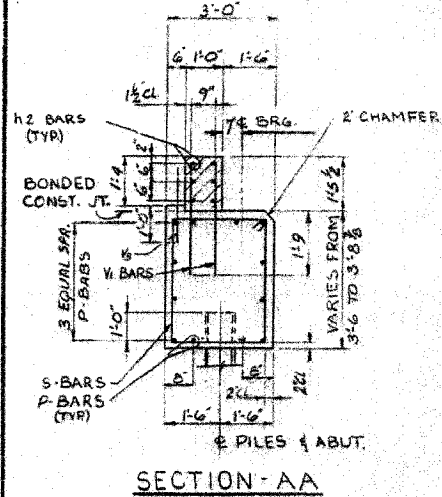
STATE OF ILLINOIS
DEPARTMENT OF TRANSPORTATION

DATE	BY	CHKD	APP'D	SHEET NO.
11/16/05	D.J.	N.K.	A.J.M.	5
PROJECT		SHEETS		
38BR1 IROQUOIS 22		19		
FED. ROAD DIST. NO. 3		ILLINOIS FED. AID PROJECT		



TWO ABUTMENTS
BILL OF MATERIAL

BAR	N	S	TOTAL	SIZE	LEN.	TH	SHAPE	
h	20	20	40	#4	3'-0"			
n1	4	4	8	#4	5'-3"			
n2	6	6	12	#4	34'-0"			
P	12	12	24	#7	34'-10"			
S	36	36	72	#4	12'-5"	3		
U	0	0	0	#6	11'-7"	C		
V	8	8	16	#4	3'-3"			
V1	72	72	144	#4	3'-1"			
V2	0	0	0	#4	4'-2"			
V3	32	32	64	#2	2'-0"			
CLASS X CONCRETE							CU YDS	30.6
REINFORCEMENT BARS							LB	3340
STEEL PILES (HP10x42)							LN FT	462
TEST PILES (HP10x42)							EACH	1

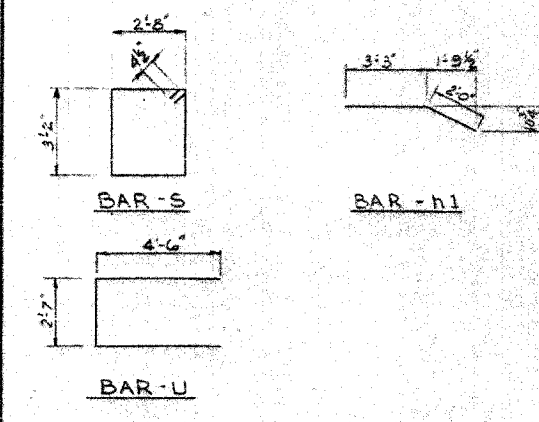
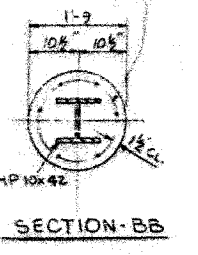
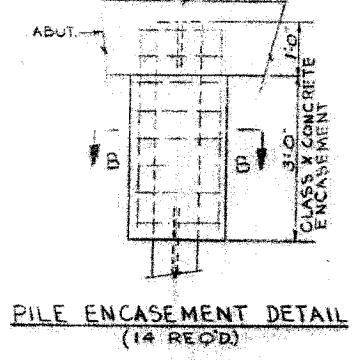


WELDED WIRE FABRIC 6'-6" x 4'-0" x W4.0 WEIGHING 50#/100 SQ. FT. THE COST OF CLASS X CONCRETE ENCASUREMENT AND REINFORCEMENT IS INCIDENTAL TO THE COST OF FURNISHING PILES. FORMS FOR ENCASUREMENT MAY BE OMITTED WHEN SOIL CONDITIONS WILL PERMIT.

ELEVATION
NORTH ABUT. LOOKING BACK STATION
SOUTH ABUT. LOOKING AHEAD STATION

PILE DATA

NORTH ABUT		SOUTH ABUT	
TYPE:	HP 10x42	TYPE:	HP 10x42
CAPACITY:	30 TONS, DRIVEN TO 45 TONS BEARING	CAPACITY:	30 TONS, DRIVEN TO 45 TONS BEARING
EST. LENGTH:	36'-0"	EST. LENGTH:	36'-0"
NO. REQ'D:	6 PLUS ONE TEST PILE	NO. REQ'D:	7



DESIGNED: D.J.
CHECKED: N.K.
DRAWN: P. WARONSKI
CHECKED: A.J.M.

NORTH AND SOUTH ABUTMENT
S B I ROUTE 25 SECTION 38BR 1
IROQUOIS COUNTY
STATION 558+74

ILLINOIS DEPARTMENT OF TRANSPORTATION
EXISTING BRIDGE PLANS
FAS 1324 (OLD US RTE 45)
SECTION 38 BR-1
IROQUOIS COUNTY

SCALE: VERT. HORIZ. DATE: 11/16/05
DRAWN BY: SUTHEARD
CHECKED BY: BOTT
GREENE & BRADFORD, INC. (OF SPRINGFIELD)
COMPUTER FILE NO. 03236.W010.EPLN
PROJECT 03236 W010 11/16/05 - MDS

REVISIONS	
NAME	DATE

FOR INFORMATION ONLY

PLOT DATE = 12/01/2005
 FILE NAME = J:\V03236\W010\BR\DRAWINGS\03236.W010.EPLN.dgn
 PLOT SCALE = 5/8"=1'-0"
 REFERENCE = REF.
 OPERATOR = PJP