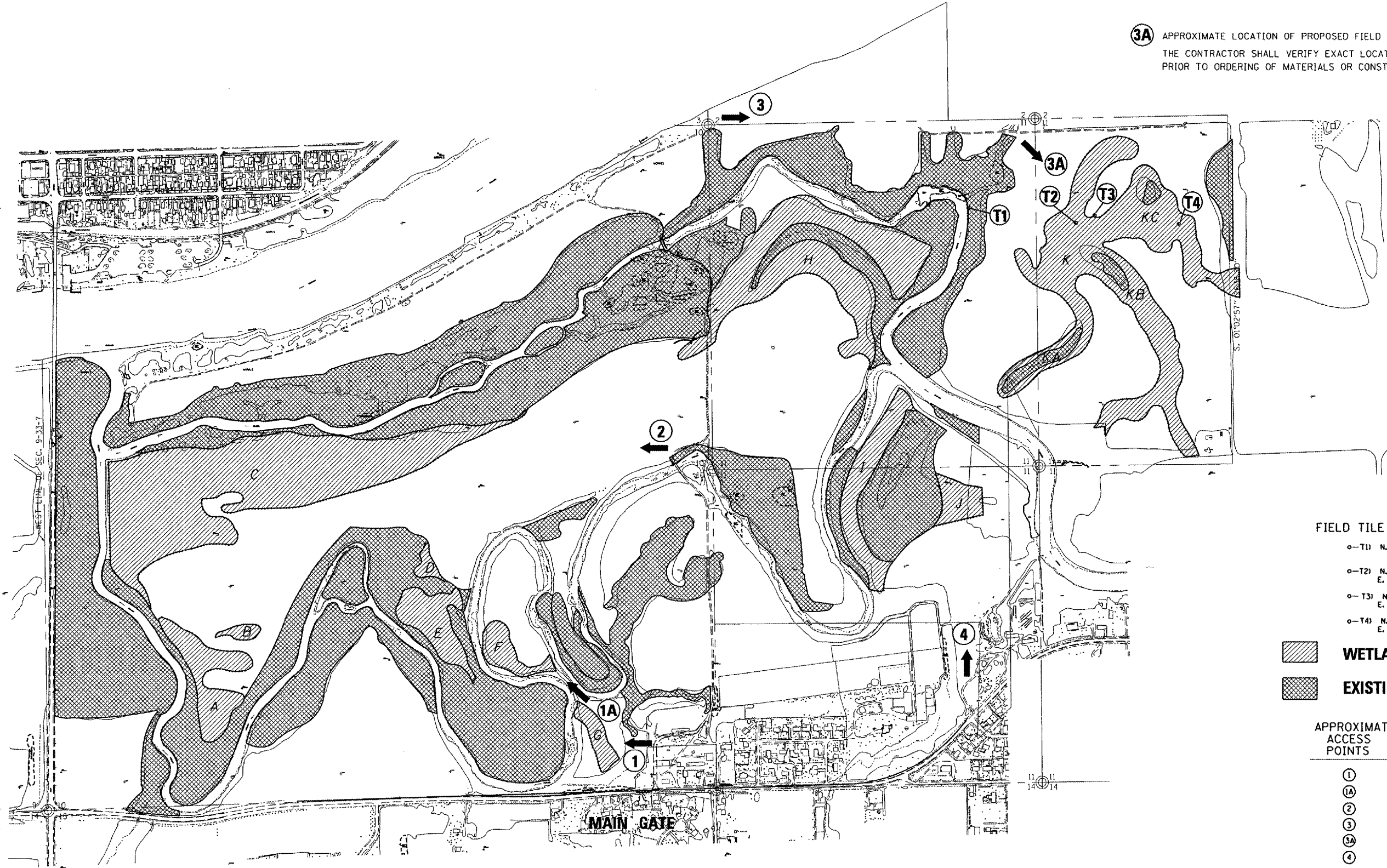


F.A.P. RTE.	SECTION	COUNTY	TOTAL SHEETS	SHEET NO.
326	(111)I-2	GRUNDY	4	3
ILLINOIS				

3A APPROXIMATE LOCATION OF PROPOSED FIELD ENTRANCE.
THE CONTRACTOR SHALL VERIFY EXACT LOCATION PRIOR TO ORDERING OF MATERIALS OR CONSTRUCTION.



FIELD TILE OUTLET AREAS

- T1 N. 1708045.513
- T2 N. 1707926.367
E. 968200.829
- T3 N. 1707986.97
E. 968350.298
- T4 N. 1707919.779
E. 969024.722

- WETLAND RESTORATION**
- EXISTING WETLAND AREAS**

APPROXIMATE ACCESS POINTS | **FIELDS ACCESSIBLE**

1	F,G
1A	F
2	A,B,C,D,E
3	K
3A	K
4	I,J

NOTES:
1. ACCESS POINTS ARE APPROXIMATE. FIELD CONDITIONS WILL DETERMINE EXACT LOCATIONS.
2. THE CONTRACTOR SHALL NOT ENROACH UPON EXISTING WETLAND AREAS EXCEPT TO PERFORM NECESSARY WORK TO REMOVE AND DEACTIVATE THE EXISTING FIELD TILE SYSTEM.

REVISIONS	
NAME	DATE

ILLINOIS DEPARTMENT OF TRANSPORTATION
**WETLAND AREA
PLAN VIEW**
SCALE: VERT. _____
 HORIZ. _____
DATE 12/16/2005
DRAWN BY RLW
CHECKED BY _____

Date: December 15, 2005
c:/projects/wetland restoration/contract 66631/details.dgn