

F.A.P. RTE.	SECTION	COUNTY	TOTAL SHEETS	SHEET NO.
326	(111)I-2	GRUNDY	4	1

INDEX OF SHEETS

1. COVER SHEET
2. SUMMARY OF QUANTITIES
3. WETLAND AREA MAP
4. PROPOSED FIELD ENTRANCE DETAILS

STANDARDS

- 701001-01 OFF-ROAD OPERATIONS 2L, 2W, MORE THAN 4.5 m (15') AWAY
- 701006-02 OFF-ROAD OPERATIONS 2L, 2W, 4.5 m (15') TO 600 mm (24") FROM PAVEMENT EDGE
- 702001-05 TRAFFIC CONTROL DEVICES

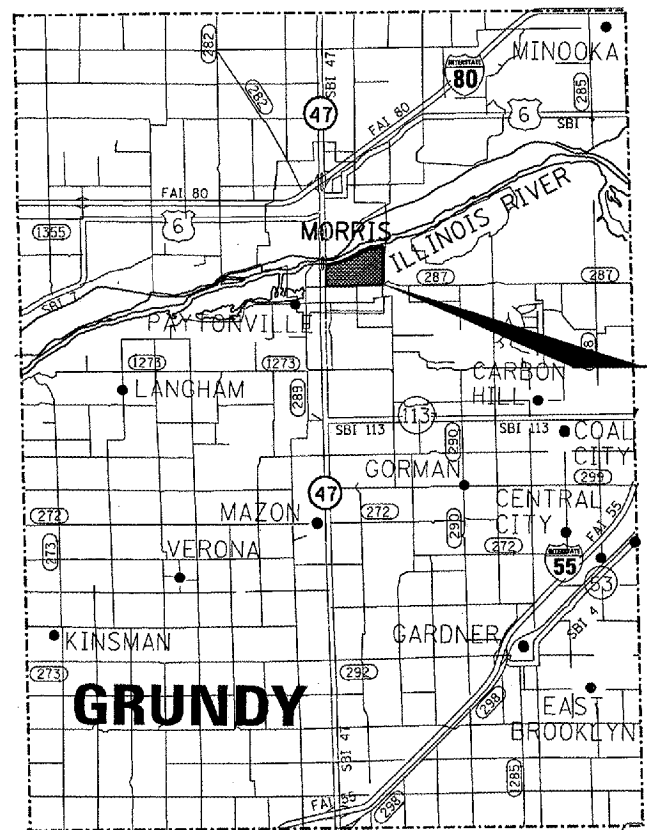
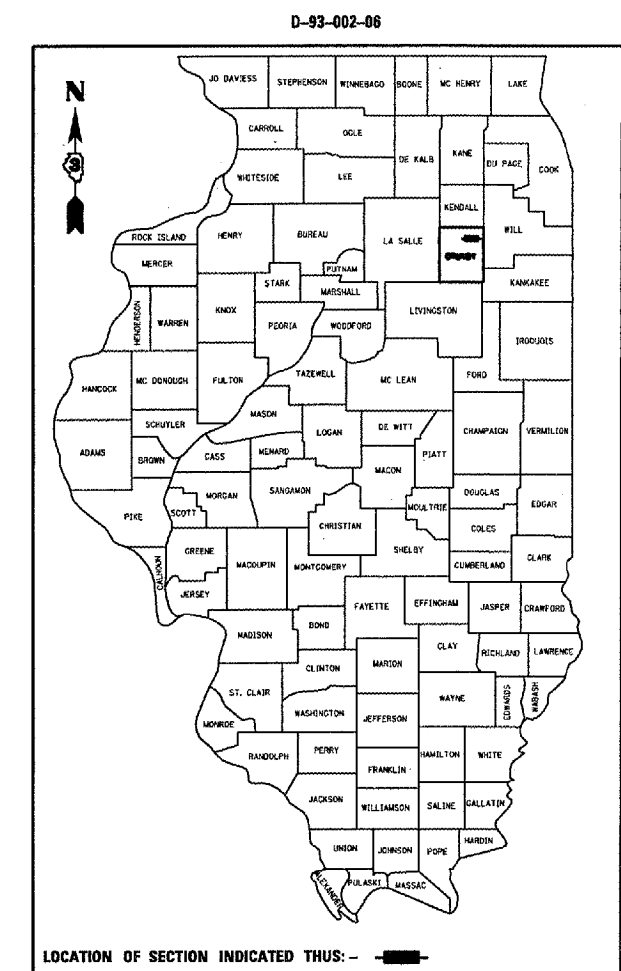
STATE OF ILLINOIS  
DEPARTMENT OF TRANSPORTATION  
DIVISION OF HIGHWAYS

**PROPOSED  
HIGHWAY PLANS**

F.A.P. ROUTE 326 (IL ROUTE 47)  
SECTION (111)I-2

GRUNDY COUNTY  
WETLAND MAINTENANCE

C-93-040-06



**WETLAND RESTORATION AREA**

**LOCATION MAP**  
NOT TO SCALE

**FUNCTIONAL CLASSIFICATION**  
URBAN: OTHER PRINCIPLE ARTERIAL  
FAP ROUTE 326 (IL ROUTE 47)  
2003 ADT = 19900  
P.V. = 83.4%      M.U. = 4.0%      S.U. = 12.6%

STATE OF ILLINOIS  
DEPARTMENT OF TRANSPORTATION  
DIVISION OF HIGHWAYS

SUBMITTED 12/22 20 05

*August Matus*  
DEPUTY DIRECTOR OF HIGHWAYS, REGION ENGINEER

February 3, 20 06  
*Mike Hene*  
ENGINEER OF DESIGN AND ENVIRONMENT

February 3, 20 06  
*Michael R. Sees P.E.*  
DIRECTOR OF HIGHWAYS, CHIEF ENGINEER

**PRINTED BY THE AUTHORITY  
OF THE STATE OF ILLINOIS**

MICROFILMED \_\_\_\_\_  
REEL NUMBER \_\_\_\_\_  
AWARDED \_\_\_\_\_  
RESIDENT ENGINEER \_\_\_\_\_  
AS BUILT CHANGES WERE MADE  
ON THE FOLLOWING SHEETS \_\_\_\_\_

J.U.L.I.E.  
JOINT UTILITY LOCATION INFORMATION FOR EXCAVATION  
1-800-892-0123

DISTRICT 3 NO. (815) 434-6131  
PROJECT ENGINEER: TOM HUFNAGEL (815) 434-8418  
UNIT CHIEF: RON WOODSHANK (815) 434-8419  
TOWNSHIP: WAUPONSEE

CONTRACT NO. 66631

Date: December 15, 2005  
c:/projects/wetland restoration/contract 66631/details.dgn

F.A.P. RTE.	SECTION	COUNTY	TOTAL SHEETS	SHEET NO.
326	(111)I-2	GRUNDY	4	2
ILLINOIS				

GENERAL NOTES

THE CONTRACTOR SHALL BE RESPONSIBLE FOR PROTECTING UTILITY PROPERTY FROM CONSTRUCTION OPERATIONS AS OUTLINED IN ARTICLE 107.31 OF THE STANDARD SPECIFICATIONS. THE "JULIE" NUMBER IS 1-800-892-0123. A MINIMUM OF FORTY-EIGHT (48) HOURS ADVANCE NOTICE IS REQUIRED.

WHERE SECTION OR SUBSECTION MONUMENTS ARE ENCOUNTERED, THE ENGINEER SHALL BE NOTIFIED BEFORE SUCH MONUMENTS ARE REMOVED. THE CONTRACTOR SHALL PROTECT AND CAREFULLY PRESERVE ALL MONUMENTS UNTIL AN AUTHORIZED SURVEYOR OR AGENT HAS WITNESSED OR OTHERWISE REFERENCED THEIR LOCATION. THE CONTRACTOR SHALL BE RESPONSIBLE FOR HAVING AN AUTHORIZED SURVEYOR REESTABLISH ANY SECTION OR SUBSECTION MONUMENTS DESTROYED BY HIS OPERATIONS.

ANY REFERENCE TO A STANDARD IN THESE PLANS SHALL BE INTERPRETED TO MEAN THE EDITION AS INDICATED BY THE SUBNUMBER LISTED ON THE INDEX OF SHEETS OR THE COPY OF THE STANDARD INCLUDED IN THESE PLANS.

THE FOLLOWING RATES OF APPLICATION HAVE BEEN USED IN CALCULATING PLAN QUANTITIES:

HERBICIDE SPRAYING	2.05	50 GALS/ACRE
--------------------	------	--------------

SUMMARY OF QUANTITIES

CONSTRUCTION CODE TYPE: Y003

CODE NO.	ITEM	UNIT	100% STATE URBAN TOTAL QUANTITY
67100100	MOBILIZATION	L SUM	1
K0012950	HERBICIDE SPRAYING	ACRE	10
XX004356	CONSTRUCTION OF FIELD ENTRANCES	L SUM	1
K1003660	MOWING CYCLES	EACH	3

DATE: 12/20/05

PREPARED BY: Bruce A. Muehlen  
DISTRICT OPERATIONS ENGINEER

EXAMINED BY: Robert K. [Signature]  
DISTRICT CONSTRUCTION ENGINEER

Phil Powell  
DISTRICT STUDIES & PLANS ENGINEER

Kenneth R. [Signature]  
DISTRICT MATERIALS ENGINEER

REVISIONS	
NAME	DATE

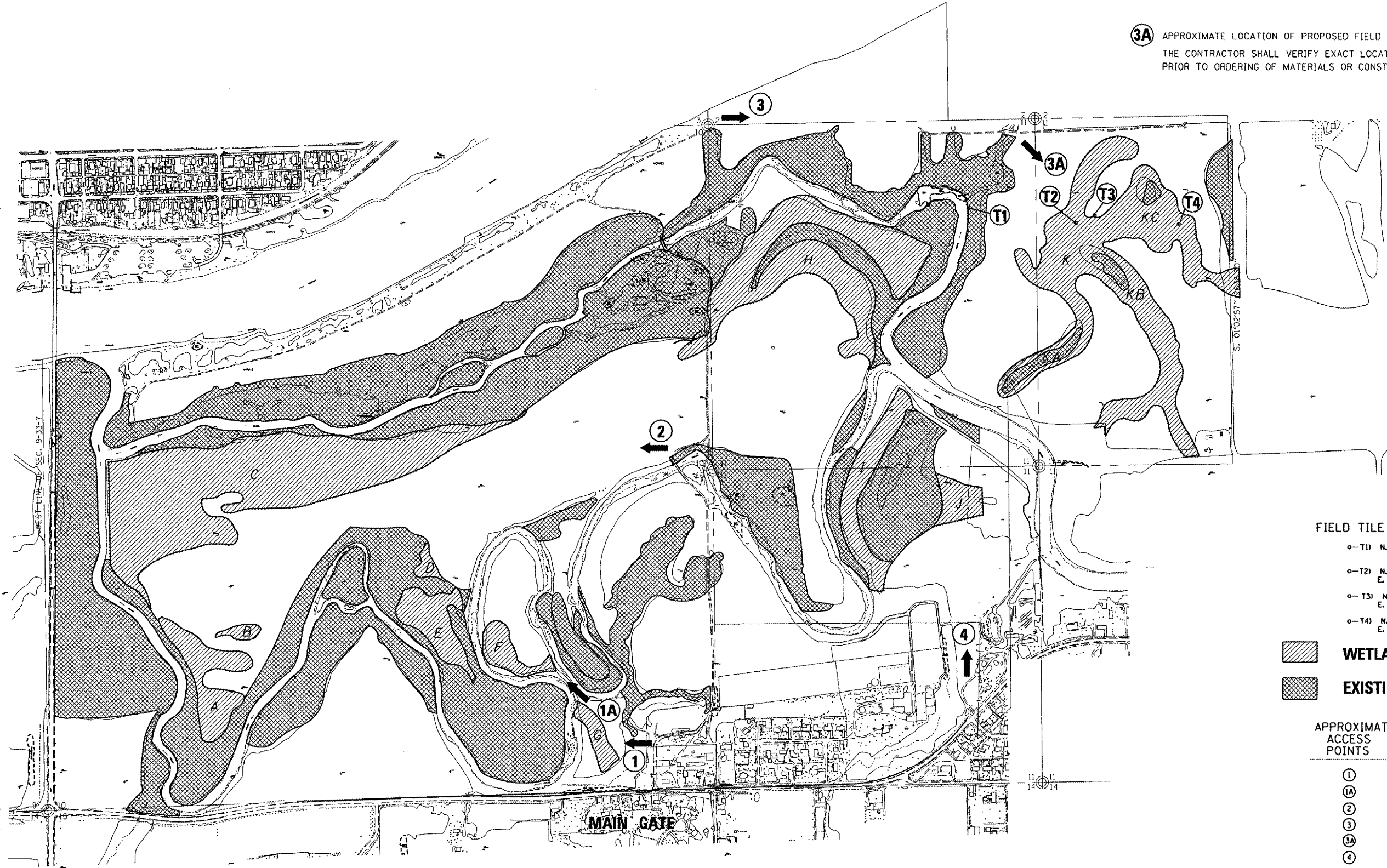
ILLINOIS DEPARTMENT OF TRANSPORTATION  
**SUMMARY OF QUANTITIES**

SCALE: VERT. DATE 12/16/2005  
DRAWN BY RLW  
CHECKED BY

Date: December 15, 2005  
c:/projects/wetland restoration/contract 66631/details.dgn

F.A.P. RTE.	SECTION	COUNTY	TOTAL SHEETS	SHEET NO.
326	(111)I-2	GRUNDY	4	3
ILLINOIS				

3A APPROXIMATE LOCATION OF PROPOSED FIELD ENTRANCE.  
THE CONTRACTOR SHALL VERIFY EXACT LOCATION PRIOR TO ORDERING OF MATERIALS OR CONSTRUCTION.



**FIELD TILE OUTLET AREAS**

- T1) N. 1708045.513
- T2) N. 1707926.367  
E. 968200.829
- T3) N. 1707986.97  
E. 968350.298
- T4) N. 1707919.779  
E. 969024.722

- WETLAND RESTORATION**
- EXISTING WETLAND AREAS**

**APPROXIMATE ACCESS POINTS** | **FIELDS ACCESSIBLE**

1	F,G
1A	F
2	A,B,C,D,E
3	K
3A	K
4	I,J

**NOTES:**  
1. ACCESS POINTS ARE APPROXIMATE. FIELD CONDITIONS WILL DETERMINE EXACT LOCATIONS.  
2. THE CONTRACTOR SHALL NOT ENROACH UPON EXISTING WETLAND AREAS EXCEPT TO PERFORM NECESSARY WORK TO REMOVE AND DEACTIVATE THE EXISTING FIELD TILE SYSTEM.

REVISIONS	
NAME	DATE

ILLINOIS DEPARTMENT OF TRANSPORTATION

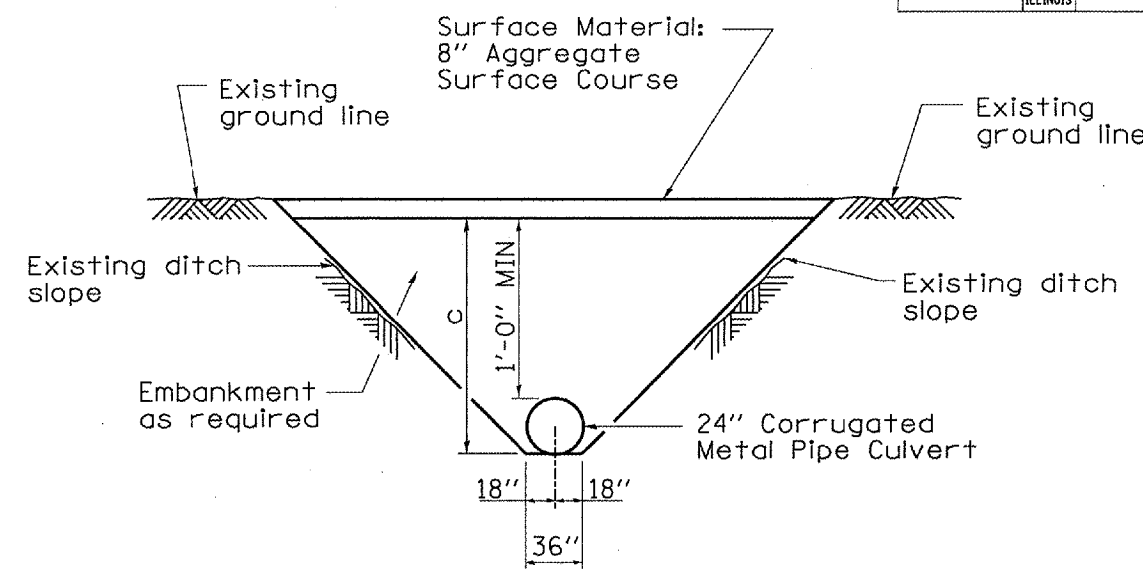
**WETLAND AREA  
PLAN VIEW**

SCALE: VERT. 1"=40'  
HORIZ. 1"=40'  
DATE 12/16/2005

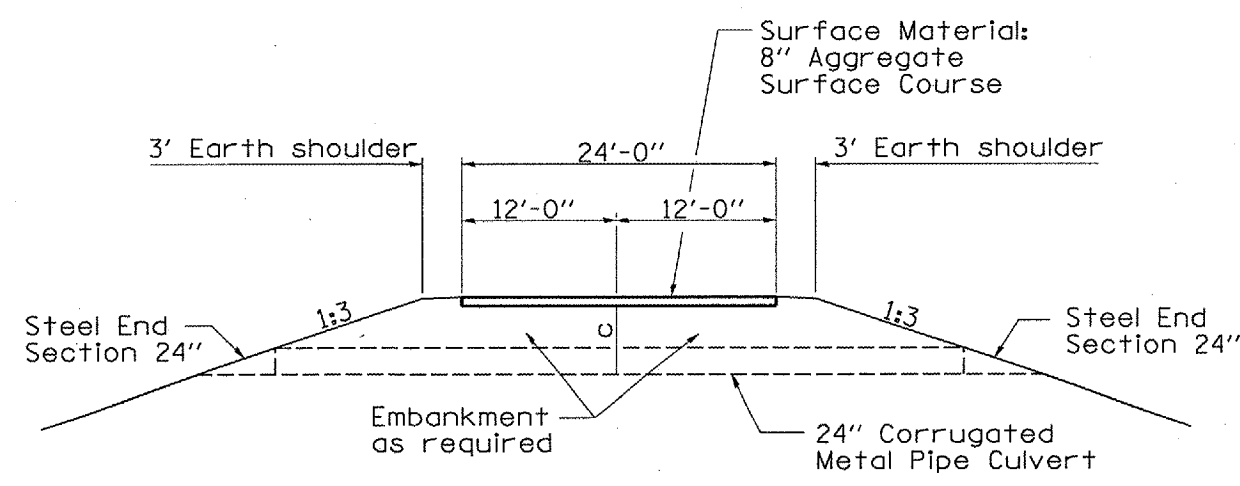
DRAWN BY RLW  
CHECKED BY

Date: December 15, 2005  
c:/projects/wetland restoration/contract 66631/details.dgn

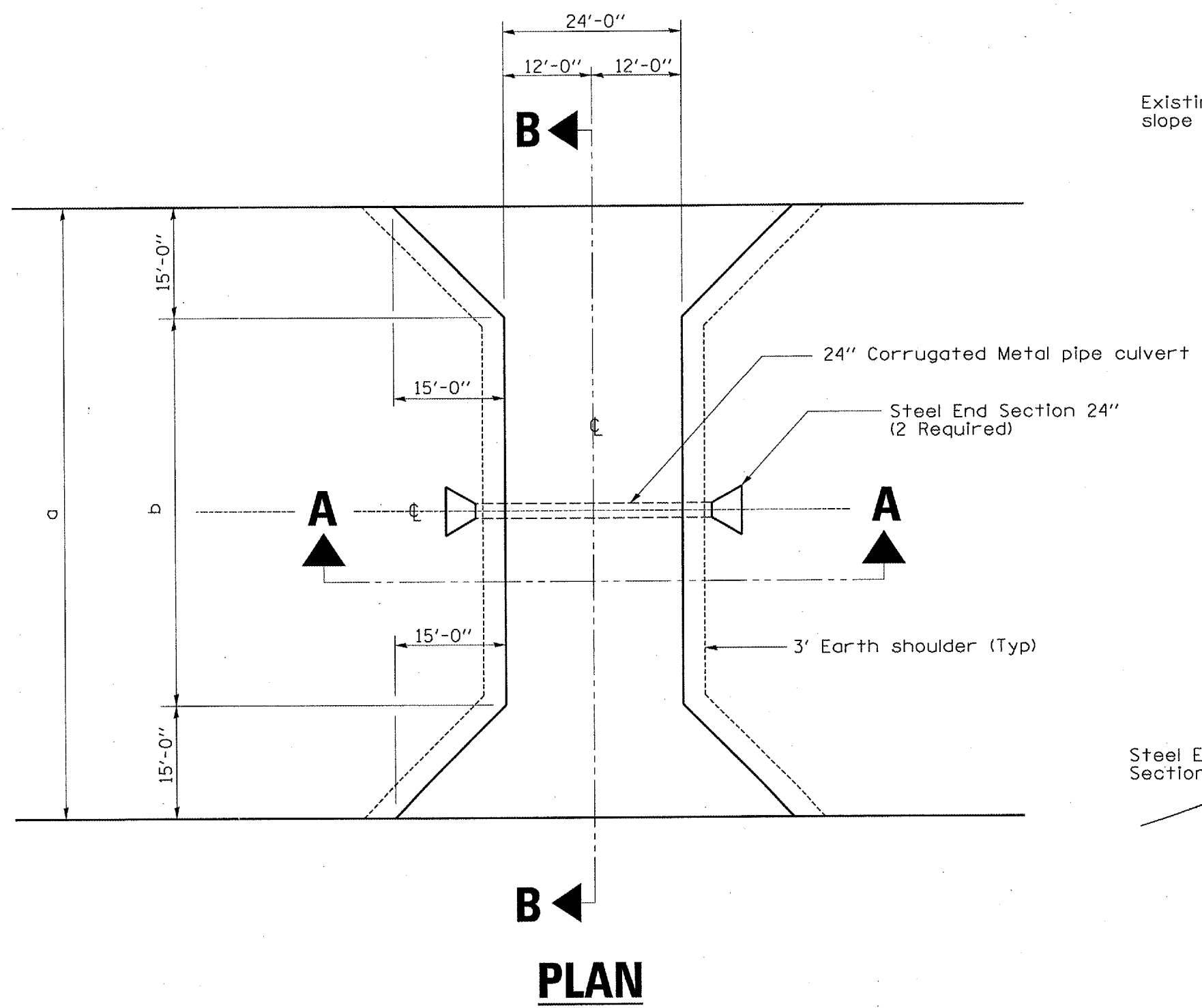
F.A.P. RTE.	SECTION	COUNTY	TOTAL SHEETS	SHEET NO.
326	(111)I-2	GRUNDY	4	4
ILLINOIS				



**SECTION B-B**



**SECTION A-A**



**PLAN**

NOTES: The Contractor shall field verify dimensions "a", "b" and "c" prior to ordering of materials.  
 The Contractor may adjust dimensions to fit field conditions. All adjustments shall be approved by the Engineer.

REVISIONS	
NAME	DATE

ILLINOIS DEPARTMENT OF TRANSPORTATION  
**PROPOSED FIELD ENTRANCE DETAILS**  
 SCALE: VERT. DATE 12/16/2005  
 DRAWN BY: RLW  
 CHECKED BY:

Date: December 15, 2005  
 c:/projects/wetland restoration/contract 66631/details.dgn