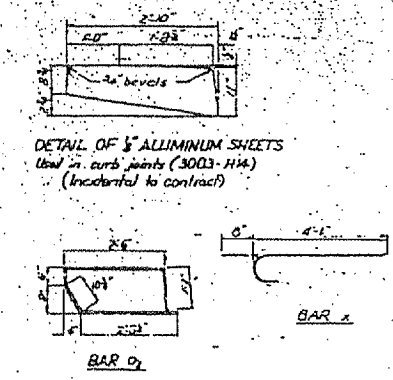
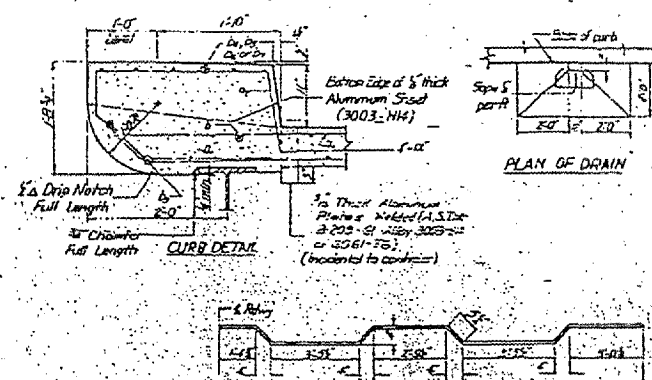
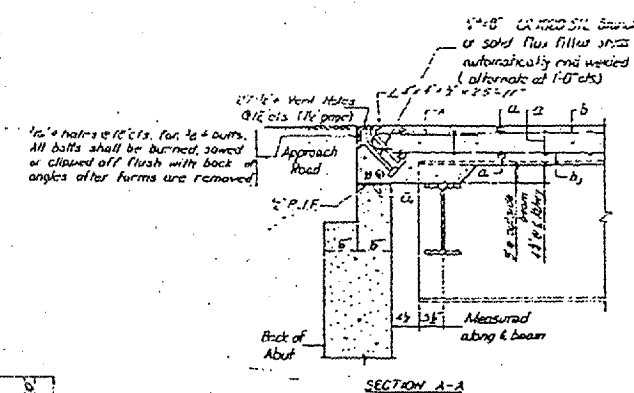
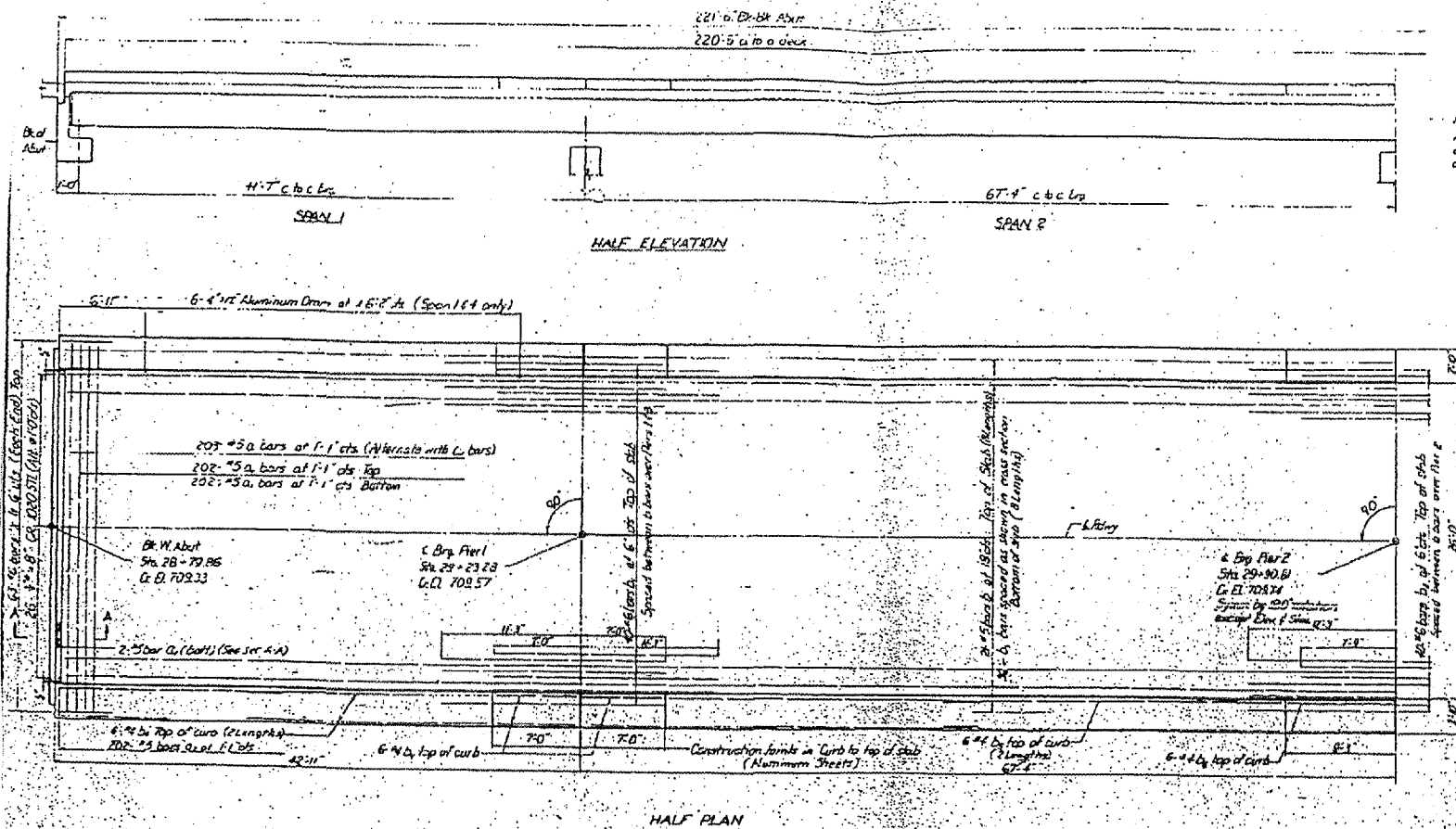


FAI ROUTE	SECTION	COUNTY	TOTAL SHEETS	SHEET NO.
57	*	CHAMPAIGN	18	11

*(10-30HB-2) & (10-31HB)P
 CONTRACT NO. 70482



BBSQ

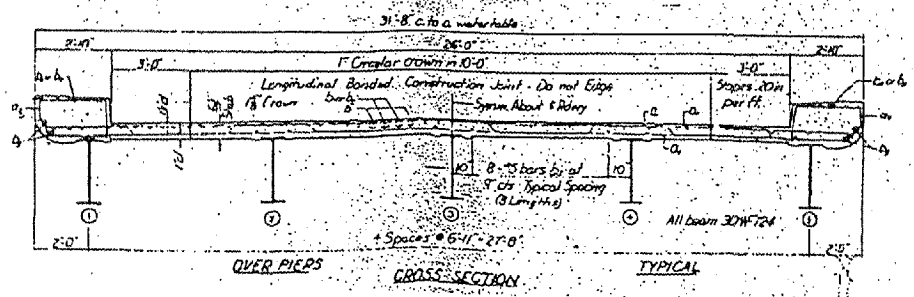
Bar	No.	Size	Length	Shape
C	203	#5	35'-0"	~
C	208	#5	33'-0"	~
D	60	#5	27'-9"	~
D	40	#5	20'-0"	~
D	25E	#5	27'-0"	~
D	42	#5	14'-6"	~
D	49	#5	25'-3"	~
D	24	#5	30'-0"	~
D	42	#5	27'-0"	~
X	120	#6	4'-9"	~
C	252	#5	7'-3"	~

Class II Concrete
 Structural Steel
 Reinforcement Bars

Weight of Rebar, Bolters, Scaffolding, Lead Plates and Anchor Bolts not Structural Steel. Est. Weight

METHOD OF DETERMINING "FILLET HEIGHTS"
 After all Structural Steel has been erected, elevations of the top flanges of the beams shall be taken at the station shown on sheet "8". These elevations subtracted from the Theoretical Girder Elevation Adjusted for Dead Load Deflection shown on sheet "9", minus floor thickness equals the Fillet heights above top of beams.

DESIGNED BY: M. Tomaszewski
 CHECKED: FS
 DATE: 24 1963



FOR INFORMATION ONLY

010-0124 * 2 2004

SUPERSTRUCTURE
 FAI Rt. 57 Sec. 10-37HB
 CHAMPAIGN COUNTY
 Sta. 367+58.97