

STATE OF ILLINOIS
DEPARTMENT OF TRANSPORTATION
DIVISION OF HIGHWAYS

PLANS FOR PROPOSED
HIGHWAY IMPROVEMENT

ROUTE: FAI 57 (I-57)
SECTION: (10-30HB-2) & (10-31HB)P
CHAMPAIGN COUNTY

C-95-004-06

BRIDGE PAINTING

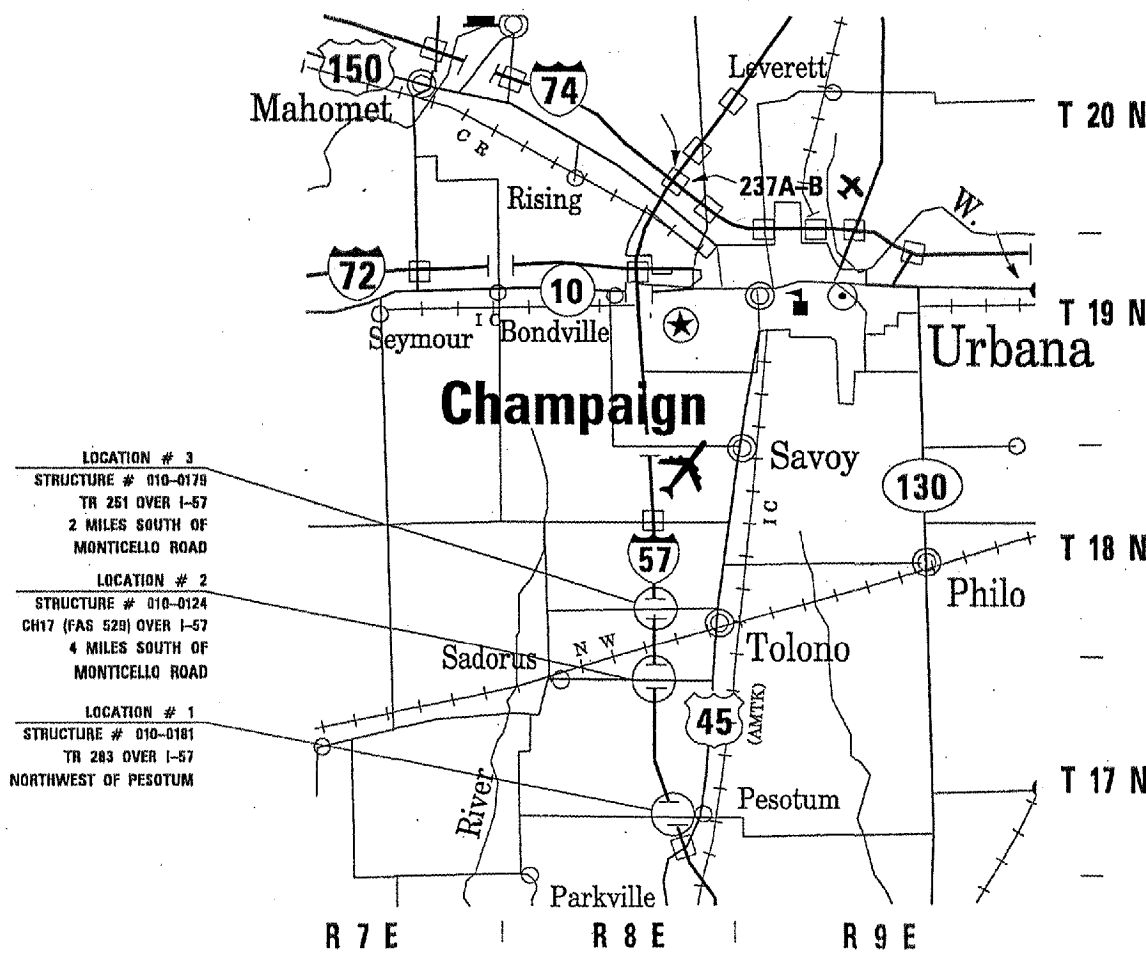
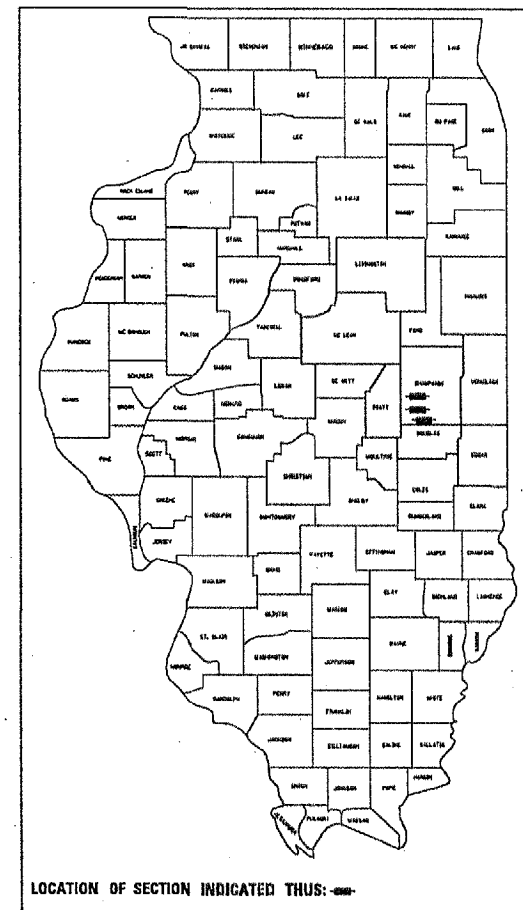
FOR INDEX OF SHEETS, SEE SHEET NO. 2
FOR SUMMARY OF QUANTITIES, SEE SHEET NO. 4

FAI ROUTE	SECTION	COUNTY	TOTAL SHEETS	SHEET NO.
57	*	CHAMPAIGN	18	1

*(10-30HB-2) & (10-31HB)P

CONTRACT NO. 70482

D-95-004-06



- LOCATION # 3
STRUCTURE # 010-0179
TR 251 OVER I-57
2 MILES SOUTH OF
MONTICELLO ROAD
- LOCATION # 2
STRUCTURE # 010-0124
CH17 (FAS 529) OVER I-57
4 MILES SOUTH OF
MONTICELLO ROAD
- LOCATION # 1
STRUCTURE # 010-0181
TR 283 OVER I-57
NORTHWEST OF PESOTUM

DESIGN DESIGNATION
NA



STATE OF ILLINOIS
DEPARTMENT OF TRANSPORTATION
DIVISION OF HIGHWAYS

SUBMITTED: *[Signature]* 2006
DEPUTY DIRECTOR OF HIGHWAYS, REGION 3 ENGINEER

EXAMINED: *[Signature]* February 3, 2006
ENGINEER OF DESIGN AND ENVIRONMENT

APPROVED: *[Signature]* February 3, 2006
DIRECTOR, DIVISION OF HIGHWAYS

FOR UNDERGROUND UTILITY
LOCATIONS CALL
TOLL FREE J.U.L.I.E. TELEPHONE NO.
1-800-892-0123

U.S. DEPARTMENT OF TRANSPORTATION
FEDERAL HIGHWAY ADMINISTRATION

APPROVED _____
DIVISION ADMINISTRATOR DATE

CONTRACT NO. 70482

CHAMPAIGN COUNTY

PRINTED BY AUTHORITY OF THE STATE OF ILLINOIS

SQUAD LEADER: C.M. SHEEHY
PROJECT ENGINEER: KENSIL GARNETT
(217) 465-4161

PAV ROUTE	SECTION	COUNTY	TOTAL SHEETS	SHEET NO.
57	#	CHAMPAIGN	18	2
LAWA.MD		BLINDS	PROJECT	

*(10-30HB-2) & (10-31HB)P

CONTRACT NO. 70482

INDEX OF SHEETS

<u>SHEET NO.</u>	<u>DESCRIPTION</u>
1	COVER SHEET
2	INDEX OF SHEETS/HIGHWAY STANDARDS
3	GENERAL NOTES
4	SUMMARY OF QUANTITIES
5-8	LOCATION #1 - STR # 010-0181 BRIDGE DESCRIPTIONS
9-13	LOCATION #2 - STR # 010-0124 BRIDGE DESCRIPTIONS
14-18	LOCATION #3 - STR # 010-0179 BRIDGE DESCRIPTIONS

LIST OF STANDARDS

<u>STANDARD NO.</u>	<u>DESCRIPTION</u>
701101-01	OFF-ROAD OPERATIONS MULTI-LANE LESS THAN 15' AWAY FOR SPEEDS \geq 45 MPH
701106-01	OFF-ROAD OPERATIONS MULTI-LANE MORE THAN 15' AWAY FOR SPEEDS \geq 45 MPH
701400-02	APPROACH TO LANE CLOSURE, FREEWAY/EXPRESSWAY
701406-04	LANE CLOSURE, MULTI-LANE DAY OPERATIONS ONLY FOR SPEEDS \geq 45 MPH
702001-05	TRAFFIC CONTROL DEVICES

FBI ROUTE	SECTION	COUNTY	TOTAL SHEETS	SHEET NO.
57	*	CHAMPAIGN	18	3

*(10-30HB-2) & (10-31HB)P

CONTRACT NO. 70482

GENERAL NOTES

G. N. -100

ENGLISH UNITS OF MEASUREMENT SHALL GOVERN OVER AND SUPERSEDE ANY METRIC UNITS SHOWN IN THIS CONTRACT. WHERE INCLUDED, METRIC UNITS ARE FOR INFORMATION ONLY.

G. N. -501A

THE EXISTING STRUCTURAL STEEL COATING CONTAINS LEAD. THE CONTRACTOR SHOULD TAKE PRECAUTIONS TO DEAL WITH THE PRESENCE OF LEAD ON THIS PROJECT.

THE SSPC-QP1 AND QP2 PAINTING CONTRACTOR CERTIFICATIONS WILL NOT BE REQUIRED FOR THIS CONTRACT.

SUMMARY OF QUANTITIES

FBI ROUTE	SECTION	COUNTY	TOTAL SHEETS	SHEET NO.
57	*	CHAMPAIGN	18	4

*(10-30HB-2) & (10-31HB)P

CONTRACT NO. 70482

<u>CODE NO</u>	<u>ITEM</u>	<u>UNIT</u>	<u>TOTAL QUANTITY</u>
	LOCATION OF WORK:		CHAMPAIGN COUNTY
	CONSTRUCTION TYPE CODE:		100% STATE SFTY-2A
50600600	CLEANING AND PAINTING STEEL BRIDGE NO. 1	L SUM	1.0
50600700	CLEANING AND PAINTING STEEL BRIDGE NO. 2	L SUM	1.0
50600800	CLEANING AND PAINTING STEEL BRIDGE NO. 3	L SUM	1.0
50606401	CONTAINMENT AND DISPOSAL OF LEAD PAINTCLEANING RESIDUES NO. 1	L SUM	1.0
50606402	CONTAINMENT AND DISPOSAL OF LEAD PAINTCLEANING RESIDUES NO. 2	L SUM	1.0
50606403	CONTAINMENT AND DISPOSAL OF LEAD PAINTCLEANING RESIDUES NO. 3	L SUM	1.0
67100100	MOBILIZATION	L SUM	1.0
70100700	TRAFFIC CONTROL AND PROTECTION, STANDARD 701406	L SUM	1.0
X5067501	BRIDGE CLEANING AND PAINTING WARRANTY NUMBER 1	L SUM	1.0
X5067502	BRIDGE CLEANING AND PAINTING WARRANTY NUMBER 2	L SUM	1.0
X5067503	BRIDGE CLEANING AND PAINTING WARRANTY NUMBER 3	L SUM	1.0
X7015005	CHANGEABLE MESSAGE SIGN	CAL DA	14.0

FAI ROUTE	SECTION	COUNTY	TOTAL SHEETS	SHEET NO.
57	*	CHAMPAIGN	18	5

*(10-30HB-2) & (10-31HB)P

CONTRACT NO. 70482

LOCATION #1

DESCRIPTION: FAI - 57
NORTHWEST OF PESOTUM
COUNTY: CHAMPAIGN
ROUTE: FAI-57 & TR 283
MARKED ROUTE: I-57
SECTION: 10-30HB-2
STRUCTURE NUMBER: 010-0181
TYPE OF STRUCTURE: 4 SPANS-5 BEAM LINES (STEEL I BEAM)

CLEANING AND PAINTING OF THE EXISTING STRUCTURAL STEEL INCLUDING DECK EXTENSION DRAINS SHALL BE AS SPECIFIED IN THE SPECIAL PROVISION FOR "CLEANING AND PAINTING EXISTING STEEL STRUCTURES." ALL BEAMS, BEARING AND OTHER STRUCTURAL STEEL SHALL BE CLEANED PER NEAR WHITE BLASTING-SSPC-SP10.

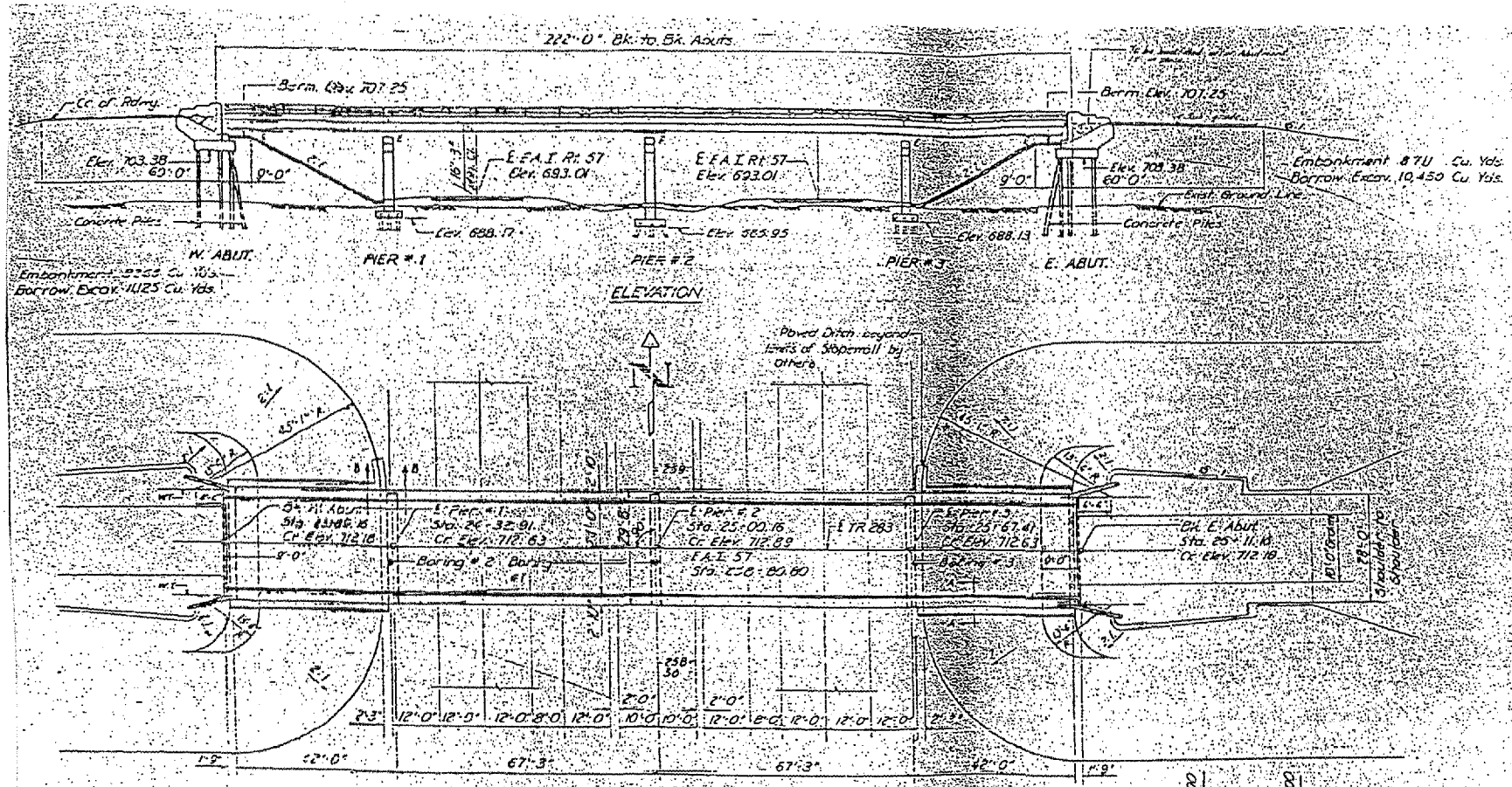
THE DESIGNATED AREAS CLEANED PER NEAR WHITE BLAST CLEANING - SSPC-SP10 SHALL BE PAINTED ACCORDING TO THE REQUIREMENTS OF PAINT SYSTEM 1-OZ/E/U. THE COLOR OF THE FINAL FINISH COAT FOR ALL INTERIOR STEEL SURFACES SHALL BE GRAY, MUNSELL NO. 5B 7/1. THE COLOR OF THE FINAL FINISH COAT FOR ALL EXTERIOR AND BOTTOM FLANGE OF THE FASCIA BEAMS SHALL BE INTERSTATE GREEN 7.5G 4/8.

PAINT WARRANTY REQUIRED FOR THIS BRIDGE

A MINIMUM OF TWO (2) AIR MONITORS WILL BE REQUIRED TO MONITOR AIR QUALITY DURING DUST PRODUCING OPERATIONS AT THIS SITE. SEE SPECIAL PROVISIONS FOR CONTAINMENT AND DISPOSAL OF LEAD PAINT CLEANING RESIDUES.

FAI ROUTE	SECTION	COUNTY	TOTAL SHEETS	SHEET NO.
57	*	CHAMPAIGN	18	6

*(10-30HB-2) & (10-31HB)P
 CONTRACT NO. 70482



GENERAL NOTES

Class X Concrete shall be used throughout. Coarse aggregate which is to be used in and posts must be absolutely free of chert, flint, lignite and soft sandstone.

The concrete floor slab shall be poured in one continuous operation between joints and shall be finished in accordance with Article 5119 of the Standard Specifications.

All Rivets shall be 3/4" unless noted.

All holes for girders shall be sub-punched 1/8" and reamed to proper size 3/4" for 3/4" rivets 5/8" for 3/8" rivets.

All rockers, bobbers, bearing plates, piles and anchor bolts shall be fabricated and erected in accord with Article 51.15 of Standard Specifications and are included in quantity of Structural Steel. Estimated Weight: 5,460 #.

Anchor bolts shall be set before riveting diaphragms over supports.

All Structural Steel and Metal Handrail shall be inspected by the Illinois Division of Highways before painting.

Welding shall comply with Article 54.5 (a) of the Standard Specifications.

The Slope Wall shall be reinforced with welded wire fabric 6" x 6" mesh #4 wires weighing 50 # per 100 Sq. Ft.

Metal Handrail and Structural Steel and anchor bolts shall receive one shop coat of red lead paint and two field coats of aluminum paint. See Article 54.1 to 54.5 inclusive of the Standard Specifications.

All paint shall be furnished and applied by the Contractor.

Piles of abutts shall be driven in holes prepared in accordance with Article 50.9 (c) of the Standard Specifications.

The Contractor shall drive 2 test piles 0.9% concrete test pile at East Abutment in a permanent location to the right of the pier near Pier # 2, as directed by the Engineer before ordering remainder of piles.

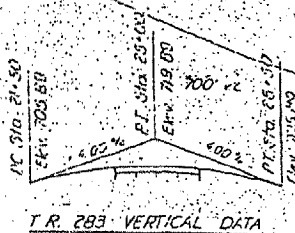
All Structural Steel shall conform to the A.S.T.M. specifications A-36.

TOTAL BILL OF MATERIAL

Item	Unit	Super	Sub	Total
Borrow Excavation	Cu Yds		21,575	21,575
Class A Excavation for Structs. (Cured)		97		97
Structural Steel	Lbs.	157,129		157,129
Class X Concrete	Cu Yds	125.7	190.2	315.9
Metal Handrail	Lbs	650		650
Reinforcement Bars	Lbs	3,569.0	14,300	17,869
Coated Piles	Lbs		680	680
Concrete Piles	Lbs		680	680
Test Piles Concrete	Each		1	1
Alume Plates	Each		2	2
Slope Wall #	Sq Yds		32	32
Test Pile (Timber)	Each		1	1
Protective Coat	Sq Yds	725		725

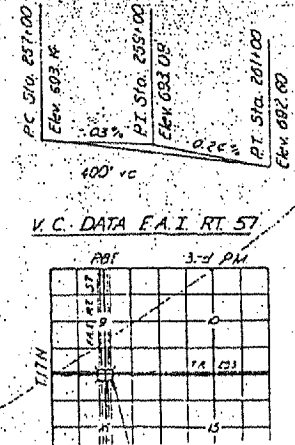
STATION 238+80.60
 DIVT 19E BY
 STATE OF ILLINOIS
 F.A.I. RT 57 SEC. 10-30HB-2
 P.A. PROJ. I-57-51(X)
 LOADING HIS-312

NAME PLATE LETTERING
 See Standard 211-3-1



DESIGN STRESSES
 fc = 1800 P.S.I. Super. & Sub.
 vs = 75 P.S.I. 110s

WESLEY GANADEN A.P.C.
 DATE: JULY 20 1951
 CHECKED: J. FULTON
 DRAWN: J. FULTON



FOR INFORMATION ONLY

010-0181 # 1 10 of 3

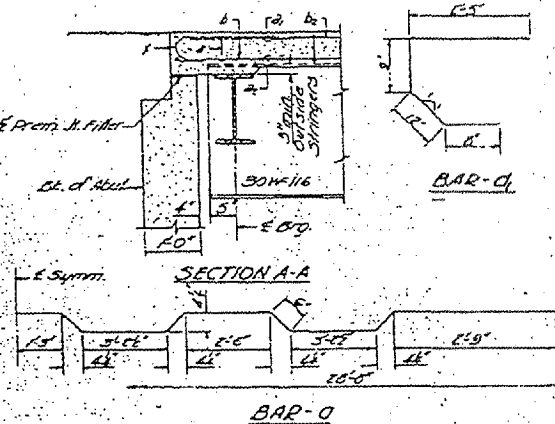
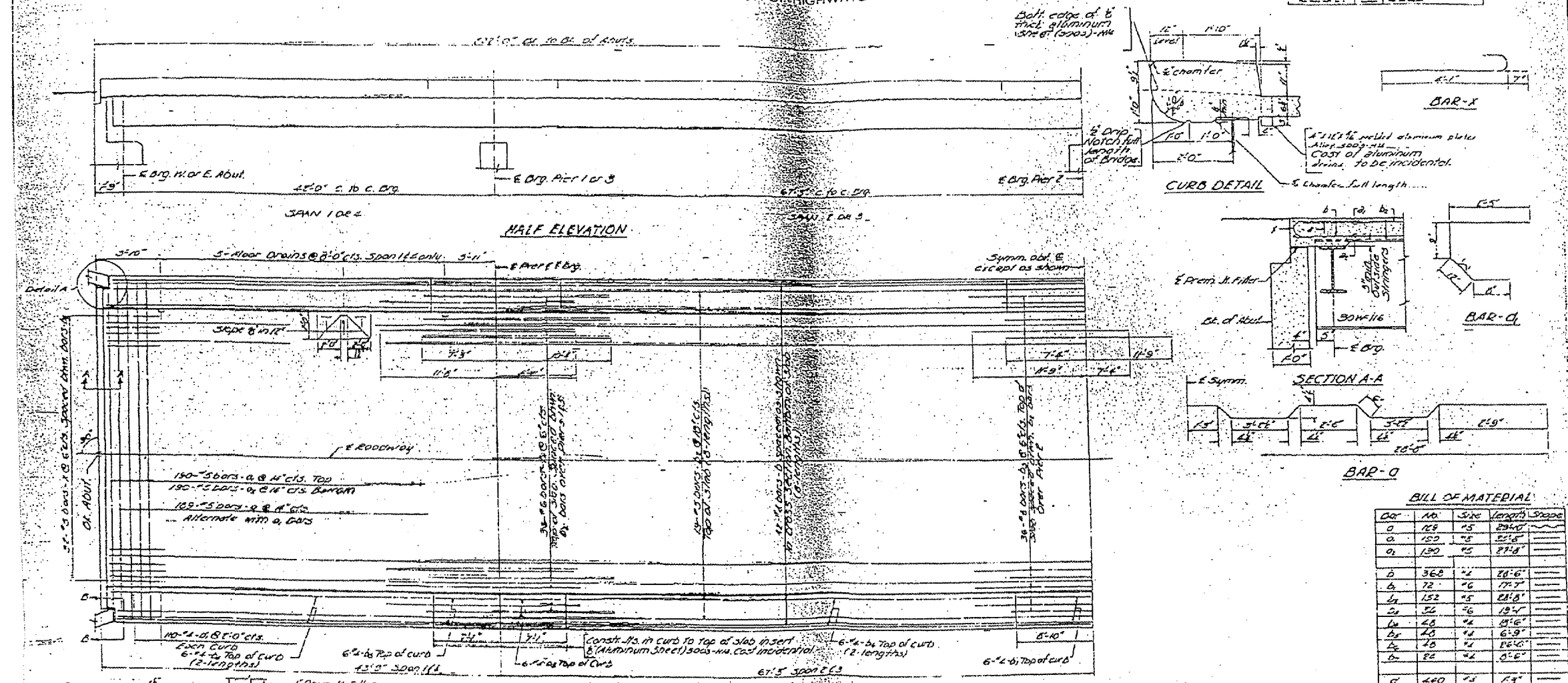
FAI ROUTE	SECTION	COUNTY	TOTAL SHEETS	SHEET NO.
57	#	CHAMPAIGN	18	7

(10-30HB-2) & (10-31HB)P
 CONTRACT NO. 70482

STATE OF ILLINOIS
 DEPARTMENT OF PUBLIC WORKS & BUILDINGS
 DIVISION OF HIGHWAYS

12-14	LA 2111-11	20	7
-------	------------	----	---

SHEET NO. 2
 OF SHEETS



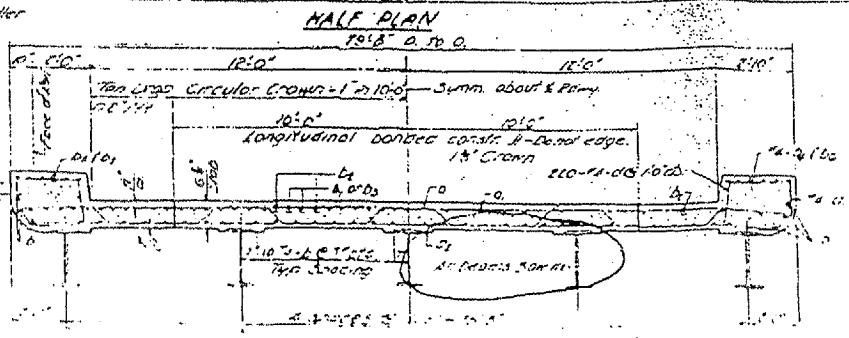
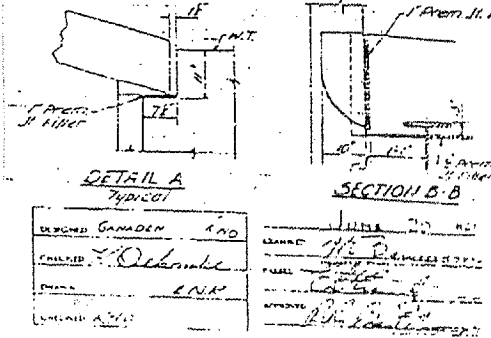
BILL OF MATERIAL

QTY	NO.	SIZE	LENGTH	SHAPE
0	125	15	294.0'	
0	127	15	52.6'	
0	129	15	27.4'	
0	130	15	27.4'	
0	131	15	27.4'	
0	132	15	27.4'	
0	133	15	27.4'	
0	134	15	27.4'	
0	135	15	27.4'	
0	136	15	27.4'	
0	137	15	27.4'	
0	138	15	27.4'	
0	139	15	27.4'	
0	140	15	27.4'	
0	141	15	27.4'	
0	142	15	27.4'	
0	143	15	27.4'	
0	144	15	27.4'	
0	145	15	27.4'	
0	146	15	27.4'	
0	147	15	27.4'	
0	148	15	27.4'	
0	149	15	27.4'	
0	150	15	27.4'	
0	151	15	27.4'	
0	152	15	27.4'	
0	153	15	27.4'	
0	154	15	27.4'	
0	155	15	27.4'	
0	156	15	27.4'	
0	157	15	27.4'	
0	158	15	27.4'	
0	159	15	27.4'	
0	160	15	27.4'	
0	161	15	27.4'	
0	162	15	27.4'	
0	163	15	27.4'	
0	164	15	27.4'	
0	165	15	27.4'	
0	166	15	27.4'	
0	167	15	27.4'	
0	168	15	27.4'	
0	169	15	27.4'	
0	170	15	27.4'	
0	171	15	27.4'	
0	172	15	27.4'	
0	173	15	27.4'	
0	174	15	27.4'	
0	175	15	27.4'	
0	176	15	27.4'	
0	177	15	27.4'	
0	178	15	27.4'	
0	179	15	27.4'	
0	180	15	27.4'	
0	181	15	27.4'	
0	182	15	27.4'	
0	183	15	27.4'	
0	184	15	27.4'	
0	185	15	27.4'	
0	186	15	27.4'	
0	187	15	27.4'	
0	188	15	27.4'	
0	189	15	27.4'	
0	190	15	27.4'	
0	191	15	27.4'	
0	192	15	27.4'	
0	193	15	27.4'	
0	194	15	27.4'	
0	195	15	27.4'	
0	196	15	27.4'	
0	197	15	27.4'	
0	198	15	27.4'	
0	199	15	27.4'	
0	200	15	27.4'	

METHOD OF DETERMINING FILLET HEIGHT

After all structural steel has been erected, dimensions of the top flanges of the beams shall be taken at the stations shown on sheets. These dimensions, subtracted from the theoretical flange dimensions, divided by Dead Load Deflection, shall give the fillet height. Fillet thickness equals the sum of fillet heights above top of beams.

SUPERSTRUCTURE
 TR. 705 OVER FA 1.57

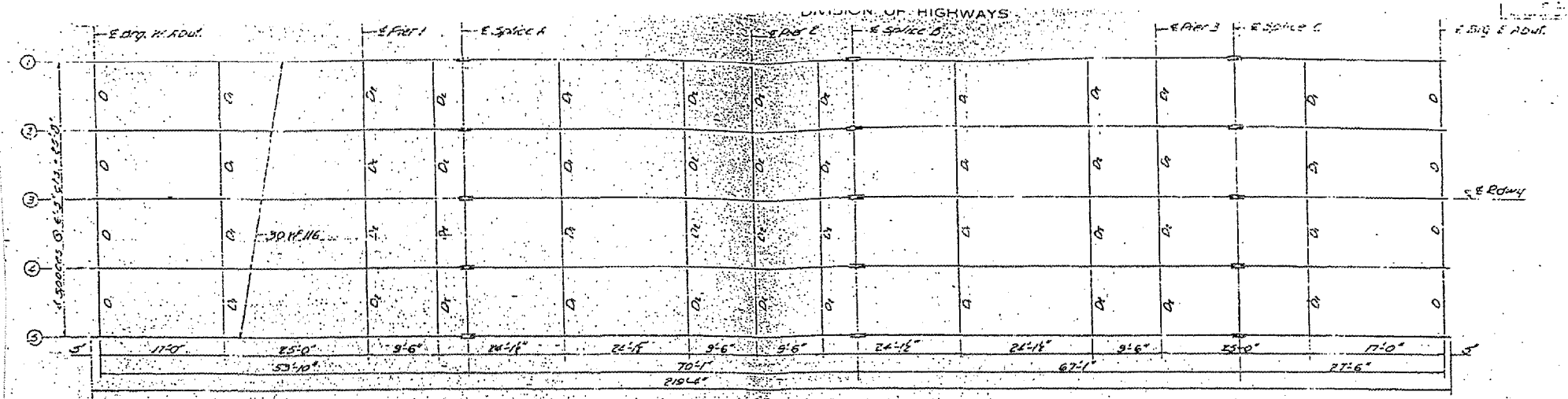


FOR INFORMATION ONLY

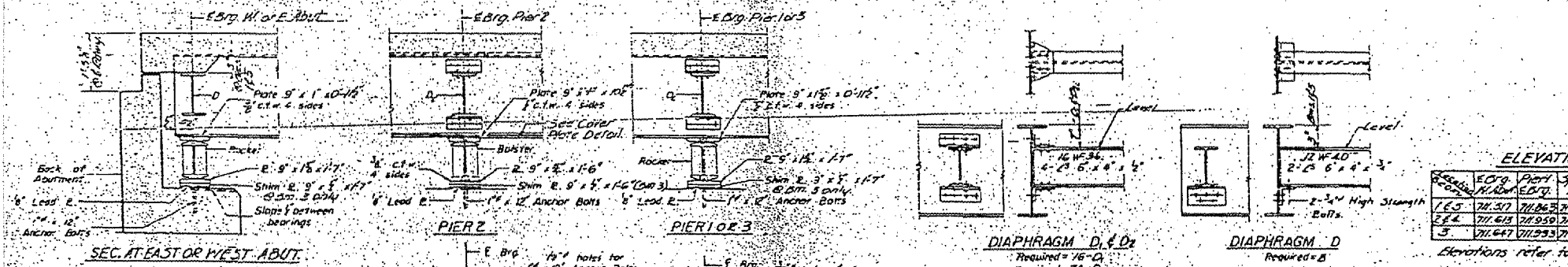
010-0181 H 1 2 of 3

FBI ROUTE	SECTION	COUNTY	TOTAL SHEET
57	4	CHAMPAIGN	18
PROJECT		NO.	

*(10-30HR-2) & (10-31HR)P
 CONTRACT NO. 70482



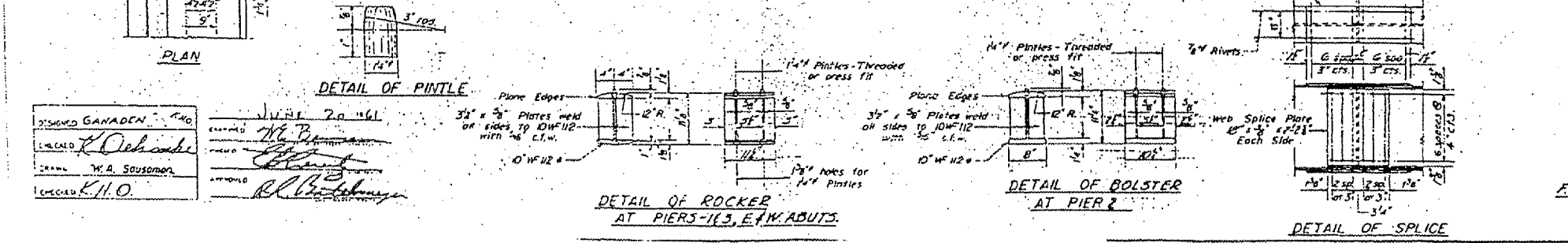
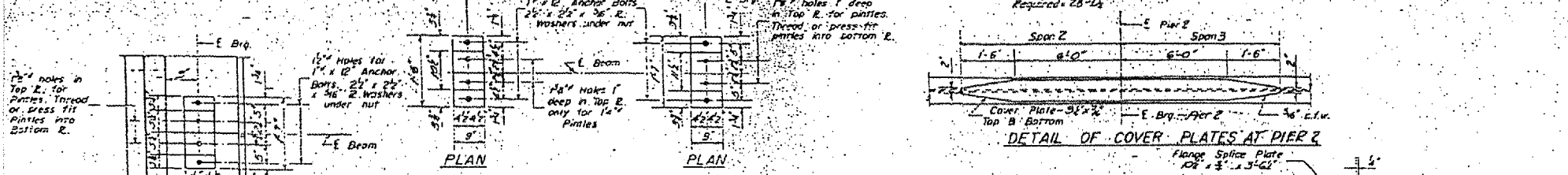
STRUCTURAL STEEL LAYOUT



ELEVATION TOP OF BEAM

Station	E. Org. W. Abut.	E. Pier 1	Splice A	Pier 2	Splice B	Pier 3	Splice C	E. Org. E. Abut.
1+5	71.37	71.86	71.90	72.05	72.12	71.81	71.51	71.53
2+4	71.41	71.90	72.03	72.13	72.17	71.97	71.67	71.69
3	71.67	71.93	72.09	72.27	72.21	71.91	71.61	71.63

Elevations refer to top of beam flange.



DESIGNED: GANADEN
 CHECKED: K. H. O.
 DRAWN: M.A. Sausonen
 APPROVED: R. B. [Signature]

STRUCTURAL STEEL
 T.R. 283 OVER F.A.I. 57
 F.A.I. RT. 57 SEC. 10-30 HR. 2
 CHAMPAIGN COUNTY
 STA 258+80.80

FOR INFORMATION ONLY

010-0181 #1 3 of 3

FAI ROUTE	SECTION	COUNTY	TOTAL SHEETS	SHEET NO.
57	*	CHAMPAIGN	18	9

*(10-30HB-2) & (10-31HB)P

CONTRACT NO. 70482

LOCATION #2

DESCRIPTION: FAI - 57
 4.0 MILES SOUTH OF MONTICELLO ROAD
 COUNTY: CHAMPAIGN
 ROUTE: FAI-57 & CH 17 (FAS 529)
 MARKED ROUTE: I-57
 SECTION: 10-30HB
 STRUCTURE NUMBER: 010-0124
 TYPE OF STRUCTURE: 4 SPANS-5 BEAM LINES (STEEL I BEAM)

CLEANING AND PAINTING OF THE EXISTING STRUCTURAL STEEL INCLUDING DECK EXTENSION DRAINS SHALL BE AS SPECIFIED IN THE SPECIAL PROVISION FOR "CLEANING AND PAINTING EXISTING STEEL STRUCTURES." ALL BEAMS, BEARING AND OTHER STRUCTURAL STEEL SHALL BE CLEANED PER NEAR WHITE BLASTING-SSPC-SP10.

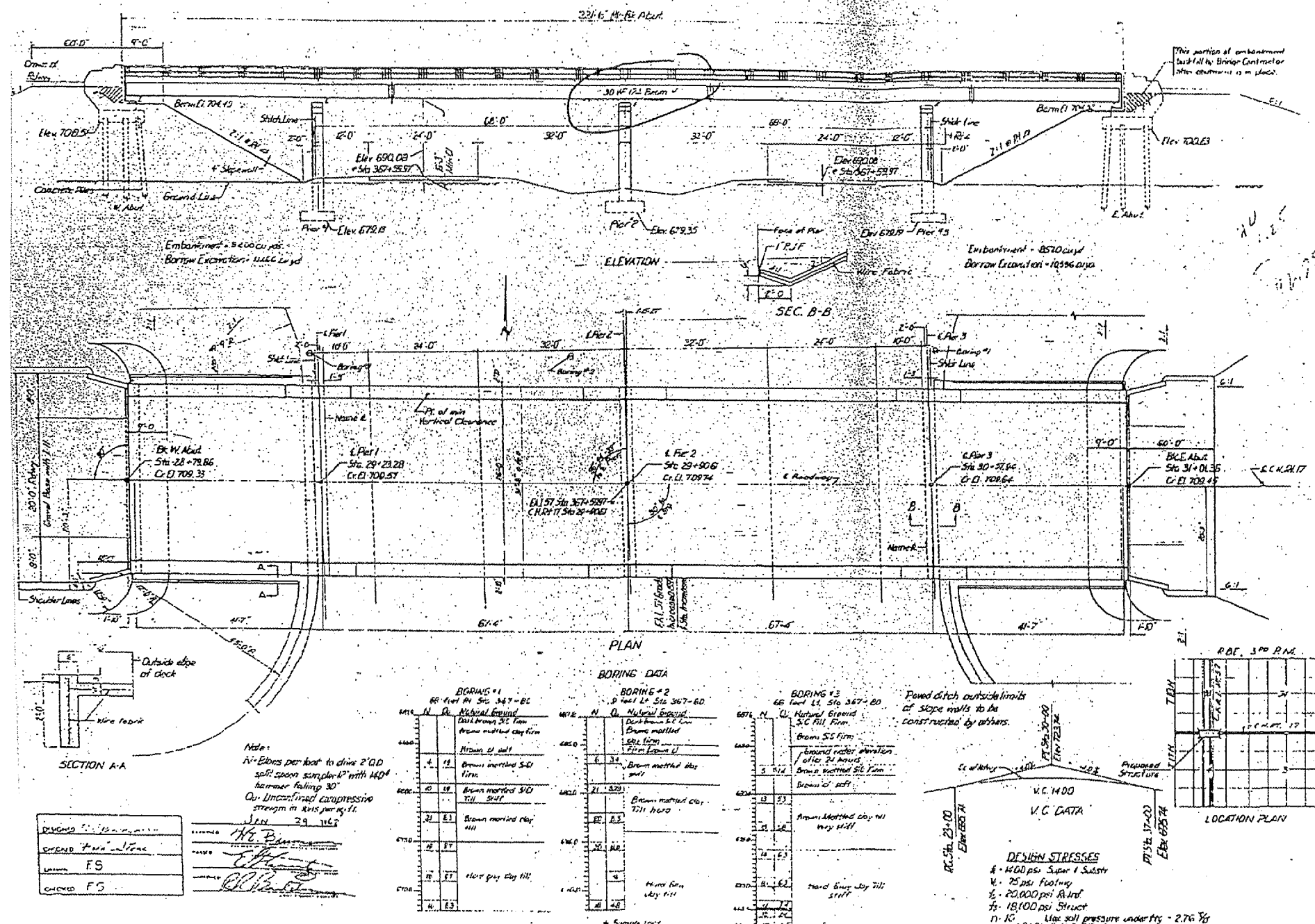
THE DESIGNATED AREAS CLEANED PER NEAR WHITE BLAST CLEANING - SSPC-SP10 SHALL BE PAINTED ACCORDING TO THE REQUIREMENTS OF PAINT SYSTEM 1-OZ/E/U. THE COLOR OF THE FINAL FINISH COAT FOR ALL INTERIOR STEEL SURFACES SHALL BE GRAY, MUNSELL NO. 5B 7/1. THE COLOR OF THE FINAL FINISH COAT FOR ALL EXTERIOR AND BOTTOM FLANGE OF THE FASCIA BEAMS SHALL BE INTERSTATE GREEN 7.5G 4/B.

PAINT WARRANTY REQUIRED FOR THIS BRIDGE

A MINIMUM OF ONE (1) AIR MONITOR WILL BE REQUIRED TO MONITOR AIR QUALITY DURING ANY DUST PRODUCING OPERATIONS AT THIS SITE. SEE SPECIAL PROVISIONS FOR CONTAINMENT AND DISPOSAL OF LEAD PAINT CLEANING RESIDUES.

FBI ROUTE	SECTION	COUNTY	TOTAL SHEETS	SHEET NO.
57	#	CHAMPAIGN	18	10

*(10-30HB-2) & (10-31HB)P
 CONTRACT NO. 70482



GENERAL NOTES

Class X concrete shall be used throughout.
 The concrete floor slab shall be finished in accordance with Article 51.8 of the Standard Specifications.
 Rebar #4, diam holes 1/2", unless noted.
 Anchor bolts shall be set before fastening diaphragms over supports.
 All nuts, washers, bearing plates, lead plates, pintles and anchor bolts shall be fabricated and set in accordance with Article 51.15 of the Standard Specifications and are included in quantity of Structural Steel, Est. Weight = 430 lbs.
 Expansion guards shall be fabricated and erected in accordance with Article 51.14 of the Standard Specifications and are included in quantity of Structural Steel, Est. Weight = 670 lbs.
 Slope wall shall be reinforced with welded wire fabric 6"x6" mesh, 4' x 10' panels, weighing 50' per 100 Sq. Ft.
 The outside face of the vertical leg of the expansion guard shall be given two shop coats of red lead paint.
 Loose aggregate which is to be used in road posts must be absolutely free of dirt, flint, limestone, lignite and soft sandstone.
 Except as otherwise provided, all structural steel shall receive one shop coat of red lead paint and two field coats of aluminum paint.
 All paint shall be furnished and applied by the Contractor.
 The contractor shall drive one test pile in a permanent location of M. Abut.
 Test piles shall be prepared from embankment in accordance with Art. 609(C) of Standard Specifications.
 All Structural Steel shall conform to the A.S.T.M. Specifications Designation A-36.

STATION 367+59.97
 BUILT 196 BY
 STATE OF ILLINOIS
 F.A.I. RT. 57, SEC. 10-31 HB
 FA PROJ. I-57-5E4
 LOADING HIS 542

LETTERING FOR NAME PLATE (See S12.113)
 For Name Plate Location See Sheet #

TOTAL BILL OF MATERIAL

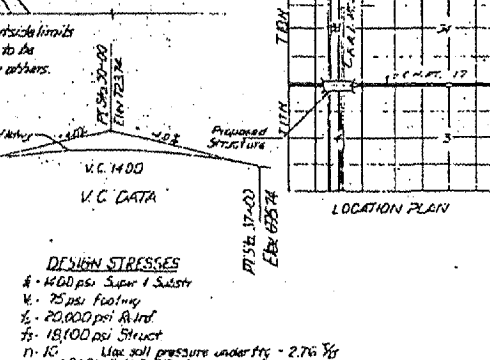
Item	Unit	Super	Sub	Total
Borrow Excavation	Cu Yd			1182.0
Class A Layer for Slope	Sq Yd			258
Class I concrete	Cu Yd	192.2	2375	4267
Structural steel	Lbs	162,630		162,630
Metal Handrail	Lbs			441
Reinforcement Bars	Lbs	47,460	17,260	64,720
Concrete Piles	Lbs			595
Test Piles (Concrete)	Each			1
Name Plates	Each			2
Slope Wall	Sq Yd			47
Protective Coat	Sq Yd	82.5		82.5

BORING DATA

BORING #1
 RR Pier #1 Sta. 347+82
 1. Natural Ground
 2. Dark brown silty clay
 3. Brown mottled clay
 4. Brown mottled clay
 5. Brown mottled clay
 6. Hard gray clay
 7. Hard gray clay
 8. Hard gray clay

BORING #2
 RR Pier #2 Sta. 367+60
 1. Natural Ground
 2. Dark brown silty clay
 3. Brown mottled clay
 4. Brown mottled clay
 5. Brown mottled clay
 6. Hard gray clay
 7. Hard gray clay
 8. Hard gray clay

BORING #3
 RR Pier #3 Sta. 367+60
 1. Natural Ground
 2. Dark brown silty clay
 3. Brown mottled clay
 4. Brown mottled clay
 5. Brown mottled clay
 6. Hard gray clay
 7. Hard gray clay
 8. Hard gray clay



REVISIONS

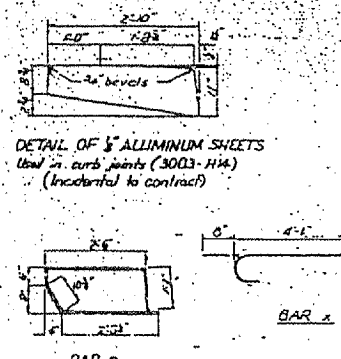
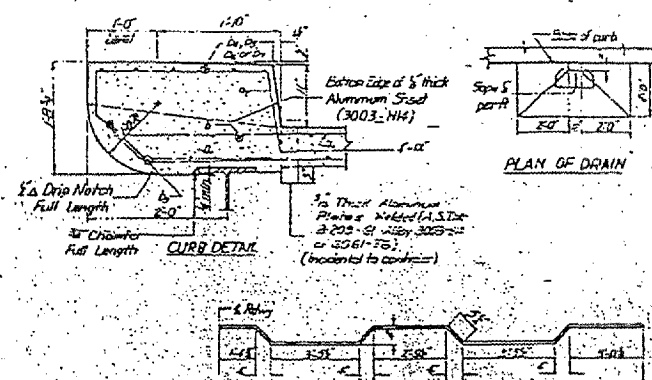
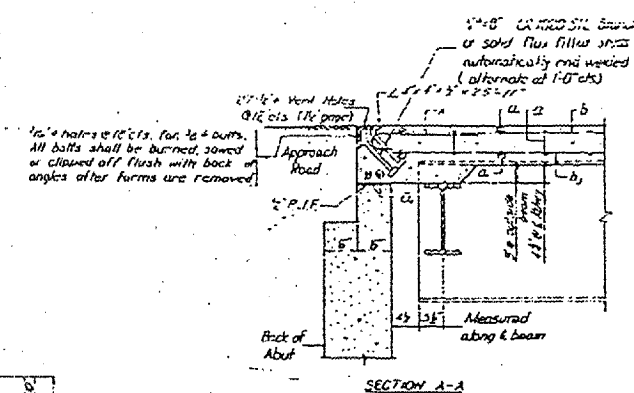
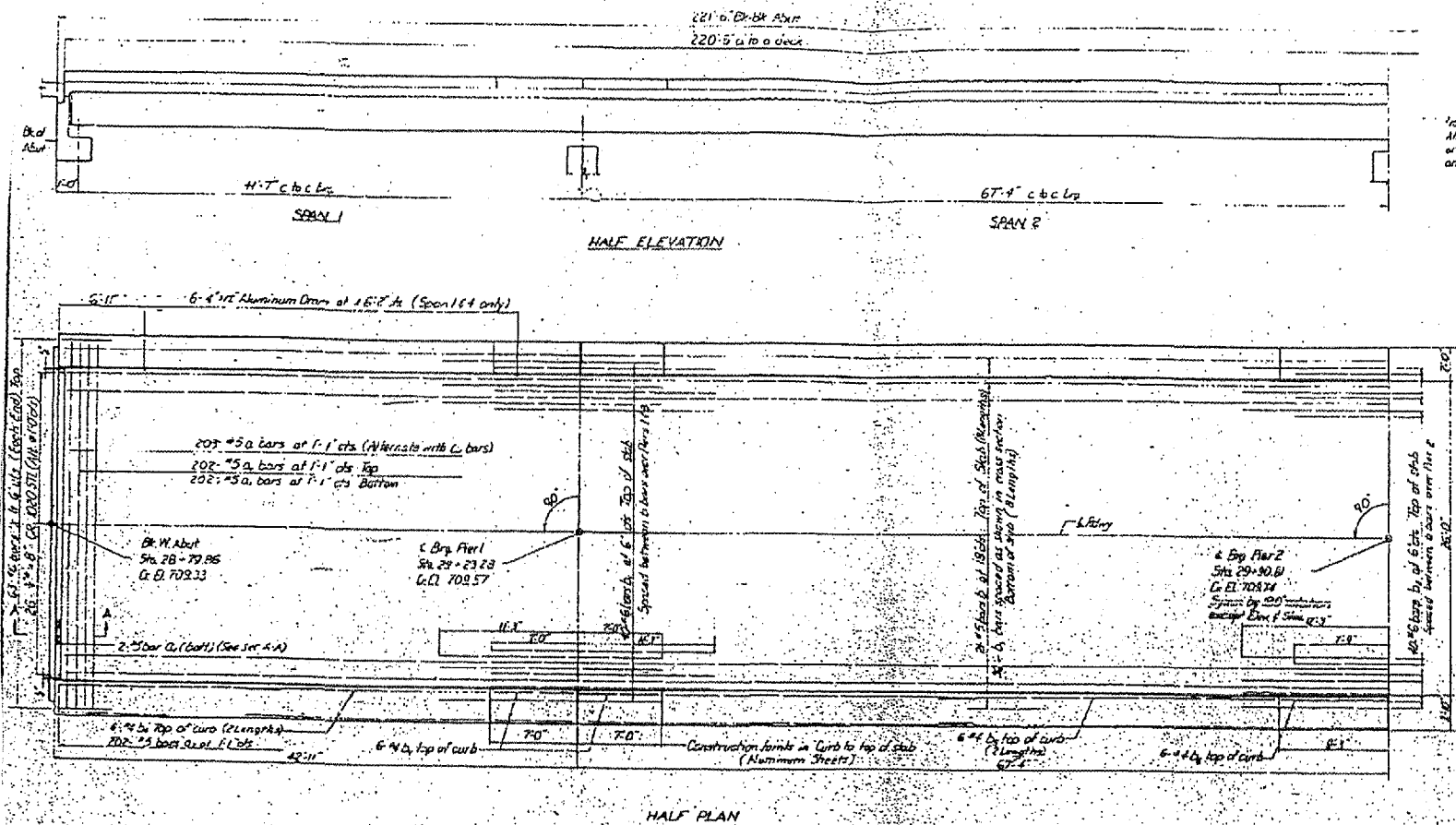
NO.	DATE	DESCRIPTION
1	11/15/04	ISSUED FOR PERMITS
2	11/15/04	ISSUED FOR CONSTRUCTION

DESIGNED BY: [Signature]
 CHECKED BY: [Signature]
 APPROVED BY: [Signature]

FOR INFORMATION ONLY 010-0124 # 2 1 of 4

FAI ROUTE	SECTION	COUNTY	TOTAL SHEETS	SHEET NO.
57	*	CHAMPAIGN	18	11

*(10-30HB-2) & (10-31HB)P
 CONTRACT NO. 70482



BBSQ

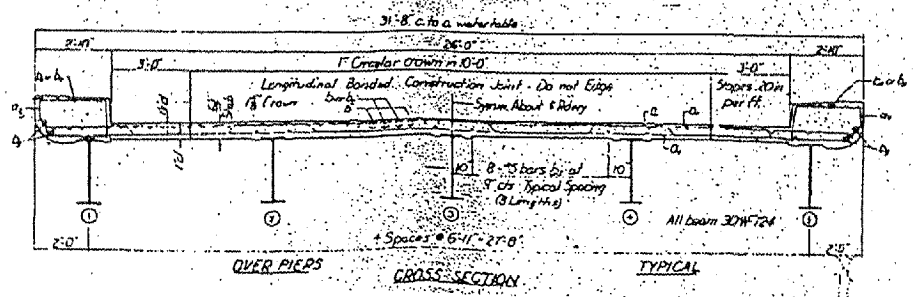
Bar	No.	Size	Length	Shape
C1	203	#5	35'-0"	~
C2	204	#5	33'-0"	~
D1	60	#5	27'-9"	~
D2	40	#5	20'-0"	~
D3	25E	#5	27'-9"	~
D4	42	#5	14'-6"	~
D5	43	#5	25'-3"	~
D6	24	#5	30'-0"	~
D7	42	#5	27'-9"	~
X	120	#6	4'-9"	~
Q1	252	#5	7'-3"	~

Class II Concrete Curb
 Structural Steel
 Reinforcement Bars

Weight of Rebar, Bolters, Sawing, Lead Plates and Anchor Bolts not Structural Steel. Est. Weight

METHOD OF DETERMINING "FILLET HEIGHTS"
 After all Structural Steel has been erected, elevations of the top flanges of the beams shall be taken at the station shown on sheet "8". These elevations subtracted from the Theoretical Grade Elevation Adjusted for Dead Load Deflection shown on sheet "9", minus floor thickness equals the Fillet heights above top of beams.

DESIGNED BY: M. Tomasi
 CHECKED BY: FS
 DATE: 24 1963



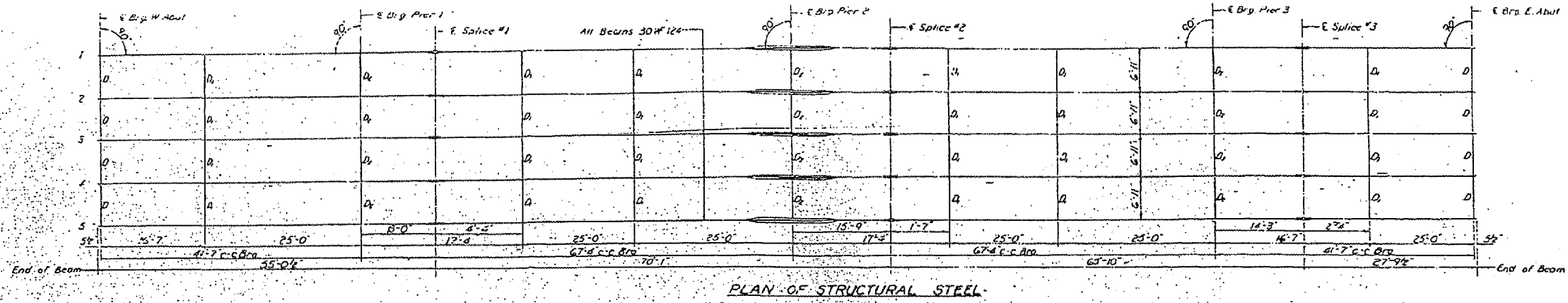
FOR INFORMATION ONLY

010-0124 * 2 2004

SUPERSTRUCTURE
 FAI Rt. 57 Sec. 10-37HB
 CHAMPAIGN COUNTY
 Sta 367+58.97

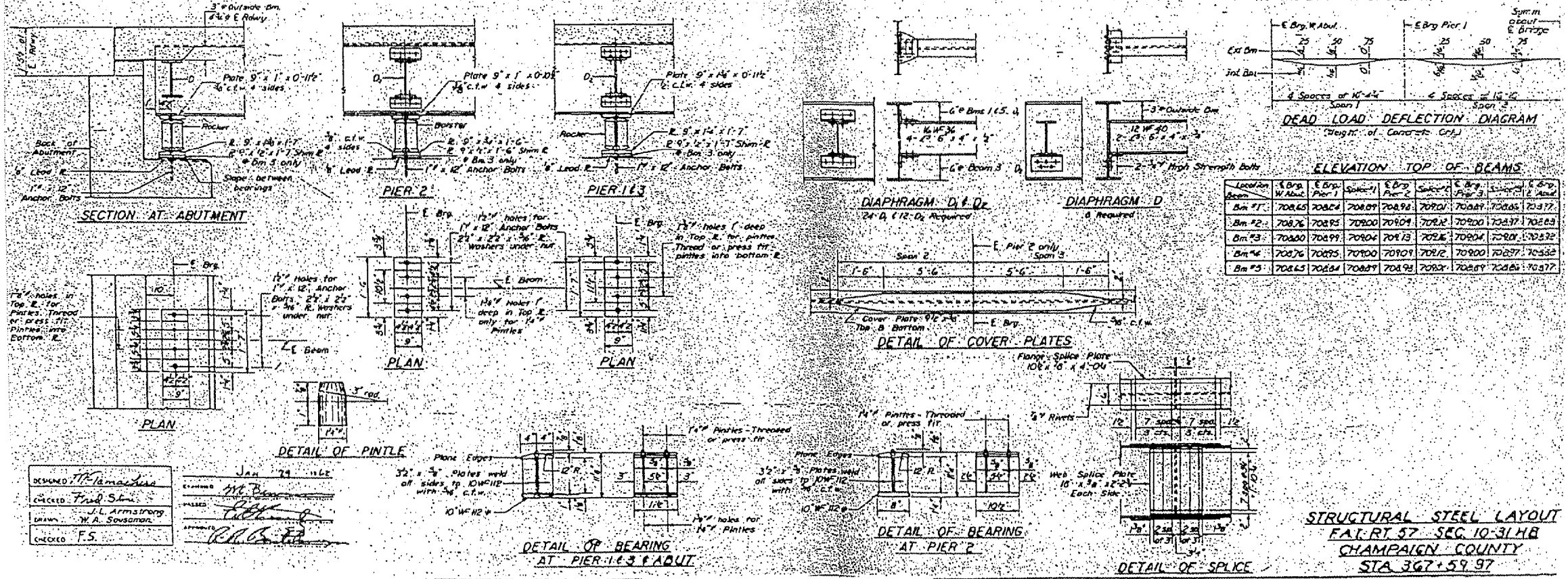
FAI ROUTE	SECTION	COUNTY	TOTAL SHEETS	SHEET NO.
57	10-31HB	CHAMPAIGN	18	12

*(10-30HB-2) & (10-31HB)P
 CONTRACT NO. 70482



PLAN OF STRUCTURAL STEEL

NOTE: The diagram below is included as a matter of record only. Allowance for D.L. Deflection is included in Top of Slab Elevations on Sheet #9.



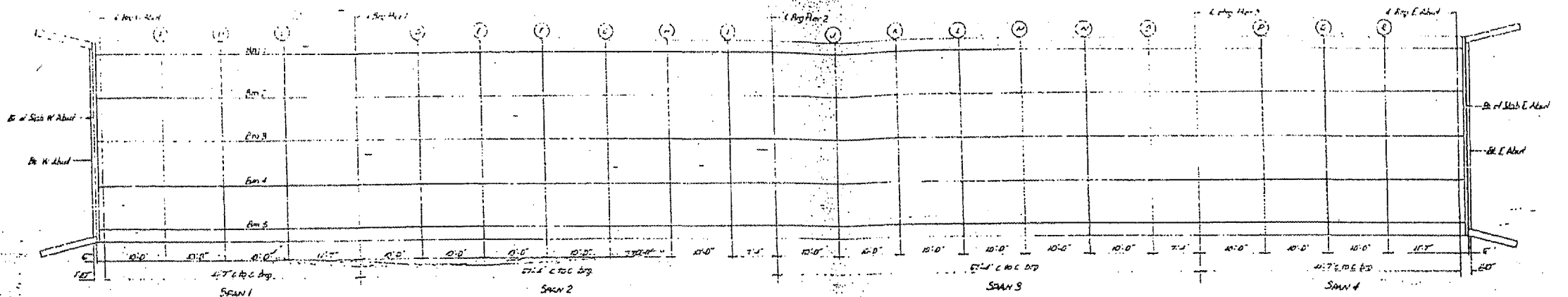
DESIGNED: M. Yamashita
 CHECKED: Fred Shon
 DRAWN: J.L. Armstrong
 W.A. Soussignan
 CHECKED: F.S.
 JAN 29 1962
 APPROVED: [Signature]

FOR INFORMATION ONLY

010-0124 #2 3 OF 4

FAJ ROUTE	SECTION	COUNTY	TOTAL SHEETS	SHEET NO.
57	*	CHAMPAIGN	18	13

*(10-30HB-2) & (10-31HB)P
 CONTRACT NO. 70482



Beam	Station	Offset	Theoretical Grade Elevation	Theoretical Grade Elevation for Road Level Adjustment
R of Sub W Abut	2871.868	6.916	791.186	791.186
	2871.868	0.000	791.186	791.186
	2871.868	6.916	791.186	791.186
R of Sub W Abut	2889.348	6.916	791.186	791.186
	2889.348	0.000	791.186	791.186
L of Sub W Abut	2881.493	6.916	791.186	791.186
	2881.493	0.000	791.186	791.186
	2881.493	6.916	791.186	791.186
A-1	2891.493	6.916	791.186	791.186
	2891.493	0.000	791.186	791.186
	2891.493	6.916	791.186	791.186
B-1	2901.493	6.916	791.186	791.186
	2901.493	0.000	791.186	791.186
	2901.493	6.916	791.186	791.186
C-1	2911.493	6.916	791.186	791.186
	2911.493	0.000	791.186	791.186
	2911.493	6.916	791.186	791.186
R of Sub W Abut	2871.868	13.832	791.186	791.186
	2871.868	13.832	791.186	791.186
R of Sub W Abut	2889.348	13.832	791.186	791.186
	2889.348	13.832	791.186	791.186
L of Sub W Abut	2881.493	13.832	791.186	791.186
	2881.493	13.832	791.186	791.186
A-1	2891.493	13.832	791.186	791.186
	2891.493	13.832	791.186	791.186
B-1	2901.493	13.832	791.186	791.186
	2901.493	13.832	791.186	791.186
C-1	2911.493	13.832	791.186	791.186
	2911.493	13.832	791.186	791.186

Beam	Station	Offset	Theoretical Grade Elevation	Theoretical Grade Elevation for Road Level Adjustment
L of Sub W Abut	2871.868	6.916	791.186	791.186
	2871.868	0.000	791.186	791.186
D-1	2881.493	6.916	791.186	791.186
	2881.493	0.000	791.186	791.186
E-1	2891.493	6.916	791.186	791.186
	2891.493	0.000	791.186	791.186
F-1	2901.493	6.916	791.186	791.186
	2901.493	0.000	791.186	791.186
G-1	2911.493	6.916	791.186	791.186
	2911.493	0.000	791.186	791.186
H-1	2921.493	6.916	791.186	791.186
	2921.493	0.000	791.186	791.186
I-1	2931.493	6.916	791.186	791.186
	2931.493	0.000	791.186	791.186
L of Sub W Abut	2871.868	13.832	791.186	791.186
	2871.868	13.832	791.186	791.186
D-1	2881.493	13.832	791.186	791.186
	2881.493	13.832	791.186	791.186
E-1	2891.493	13.832	791.186	791.186
	2891.493	13.832	791.186	791.186
F-1	2901.493	13.832	791.186	791.186
	2901.493	13.832	791.186	791.186
G-1	2911.493	13.832	791.186	791.186
	2911.493	13.832	791.186	791.186
H-1	2921.493	13.832	791.186	791.186
	2921.493	13.832	791.186	791.186
I-1	2931.493	13.832	791.186	791.186
	2931.493	13.832	791.186	791.186

Beam	Station	Offset	Theoretical Grade Elevation	Theoretical Grade Elevation for Road Level Adjustment
L of Sub W Abut	2871.868	6.916	791.186	791.186
	2871.868	0.000	791.186	791.186
J-1	2881.493	6.916	791.186	791.186
	2881.493	0.000	791.186	791.186
K-1	2891.493	6.916	791.186	791.186
	2891.493	0.000	791.186	791.186
L-1	2901.493	6.916	791.186	791.186
	2901.493	0.000	791.186	791.186
M-1	2911.493	6.916	791.186	791.186
	2911.493	0.000	791.186	791.186
N-1	2921.493	6.916	791.186	791.186
	2921.493	0.000	791.186	791.186
O-1	2931.493	6.916	791.186	791.186
	2931.493	0.000	791.186	791.186
L of Sub W Abut	2871.868	13.832	791.186	791.186
	2871.868	13.832	791.186	791.186
J-1	2881.493	13.832	791.186	791.186
	2881.493	13.832	791.186	791.186
K-1	2891.493	13.832	791.186	791.186
	2891.493	13.832	791.186	791.186
L-1	2901.493	13.832	791.186	791.186
	2901.493	13.832	791.186	791.186
M-1	2911.493	13.832	791.186	791.186
	2911.493	13.832	791.186	791.186
N-1	2921.493	13.832	791.186	791.186
	2921.493	13.832	791.186	791.186
O-1	2931.493	13.832	791.186	791.186
	2931.493	13.832	791.186	791.186

Beam	Station	Offset	Theoretical Grade Elevation	Theoretical Grade Elevation for Road Level Adjustment
L of Sub W Abut	2871.868	6.916	791.186	791.186
	2871.868	0.000	791.186	791.186
P-1	2881.493	6.916	791.186	791.186
	2881.493	0.000	791.186	791.186
Q-1	2891.493	6.916	791.186	791.186
	2891.493	0.000	791.186	791.186
R-1	2901.493	6.916	791.186	791.186
	2901.493	0.000	791.186	791.186
L of Sub W Abut	2871.868	13.832	791.186	791.186
	2871.868	13.832	791.186	791.186
P-1	2881.493	13.832	791.186	791.186
	2881.493	13.832	791.186	791.186
Q-1	2891.493	13.832	791.186	791.186
	2891.493	13.832	791.186	791.186
R-1	2901.493	13.832	791.186	791.186
	2901.493	13.832	791.186	791.186
L of Sub W Abut	2871.868	13.832	791.186	791.186
	2871.868	13.832	791.186	791.186
P-1	2881.493	13.832	791.186	791.186
	2881.493	13.832	791.186	791.186
Q-1	2891.493	13.832	791.186	791.186
	2891.493	13.832	791.186	791.186
R-1	2901.493	13.832	791.186	791.186
	2901.493	13.832	791.186	791.186

FOR INFORMATION ONLY

010-0124, 2 of 4

ELEVATION - TOP OF SLAB
 FAJ, Rt. 57 - SEC 10-31HB
 CHAMPAIGN COUNTY
 STA 367-3937

FAI ROUTE	SECTION	COUNTY	TOTAL SHEETS	BUDGET NO.
57	*	CHAMPAIGN	18	14

*(10-30HB-2) & (10-31HB)P

CONTRACT NO. 70482

LOCATION #3

DESCRIPTION: FAI - 57
 2.0 MILES SOUTH OF MONTICELLO ROAD
 COUNTY: CHAMPAIGN
 ROUTE: FAI-57 & TR 251
 MARKED ROUTE: I-57
 SECTION: 10-31HB-1
 STRUCTURE NUMBER: 010-0179
 TYPE OF STRUCTURE: 4 SPANS-5 BEAM LINES (STEEL I BEAM)

CLEANING AND PAINTING OF THE EXISTING STRUCTURAL STEEL INCLUDING DECK EXTENSION DRAINS SHALL BE AS SPECIFIED IN THE SPECIAL PROVISION FOR "CLEANING AND PAINTING EXISTING STEEL STRUCTURES." ALL BEAMS, BEARING AND OTHER STRUCTURAL STEEL SHALL BE CLEANED PER NEAR WHITE BLASTING-SSPC-SP10.

THE DESIGNATED AREAS CLEANED PER NEAR WHITE BLAST CLEANING - SSPC-SP10 SHALL BE PAINTED ACCORDING TO THE REQUIREMENTS OF PAINT SYSTEM 1-OZ/E/U. THE COLOR OF THE FINAL FINISH COAT FOR ALL INTERIOR STEEL SURFACES SHALL BE GRAY, MUNSELL NO. 5B 7/1. THE COLOR OF THE FINAL FINISH COAT FOR ALL EXTERIOR AND BOTTOM FLANGE OF THE FASCIA BEAMS SHALL BE INTERSTATE GREEN 7.5G 4/B.

PAINT WARRANTY REQUIRED FOR THIS BRIDGE

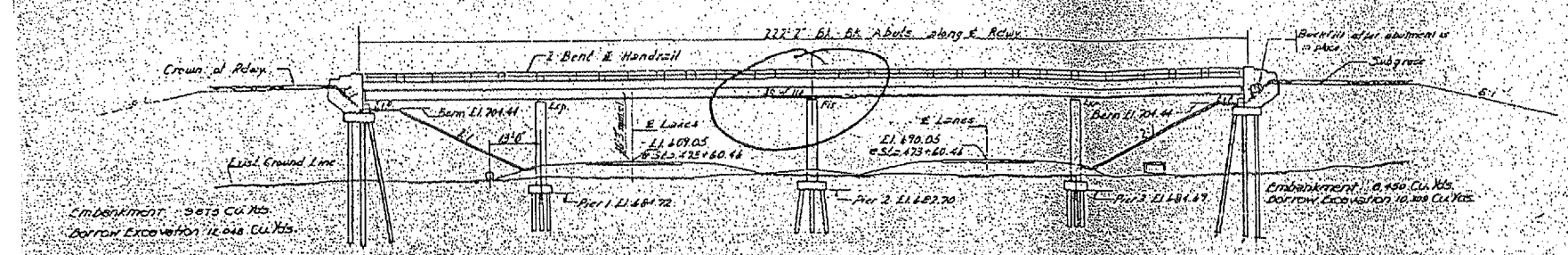
A MINIMUM OF ONE (1) AIR MONITOR WILL BE REQUIRED TO MONITOR AIR QUALITY DURING ANY DUST PRODUCING OPERATIONS AT THIS SITE. SEE SPECIAL PROVISIONS FOR CONTAINMENT AND DISPOSAL OF LEAD PAINT CLEANING RESIDUES.

FAJ ROUTE	SECTION	COUNTY	TOTAL SHEET NO.
57	6	CHAMPAIGN	18
DATE	DATE	DATE	DATE
10-21-05	10-21-05	10-21-05	10-21-05

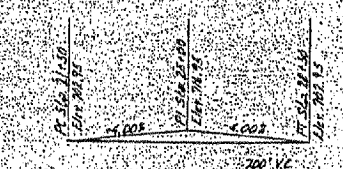
*(10-30HB-2) & (10-31HB)P
CONTRACT NO. 70482

STATE OF ILLINOIS
DEPARTMENT OF PUBLIC WORKS & BUILDINGS
DIVISION OF HIGHWAYS

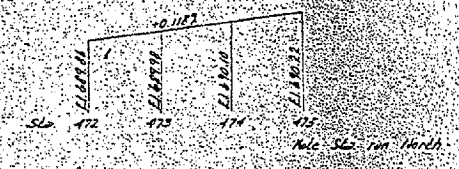
FAJ 57	10-21-05	CHAMPAIGN	20	5
DATE	DATE	DATE	DATE	DATE
10-21-05	10-21-05	10-21-05	10-21-05	10-21-05



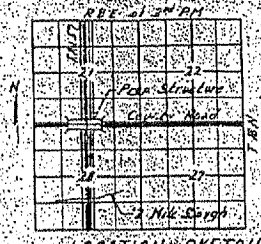
ELEVATION



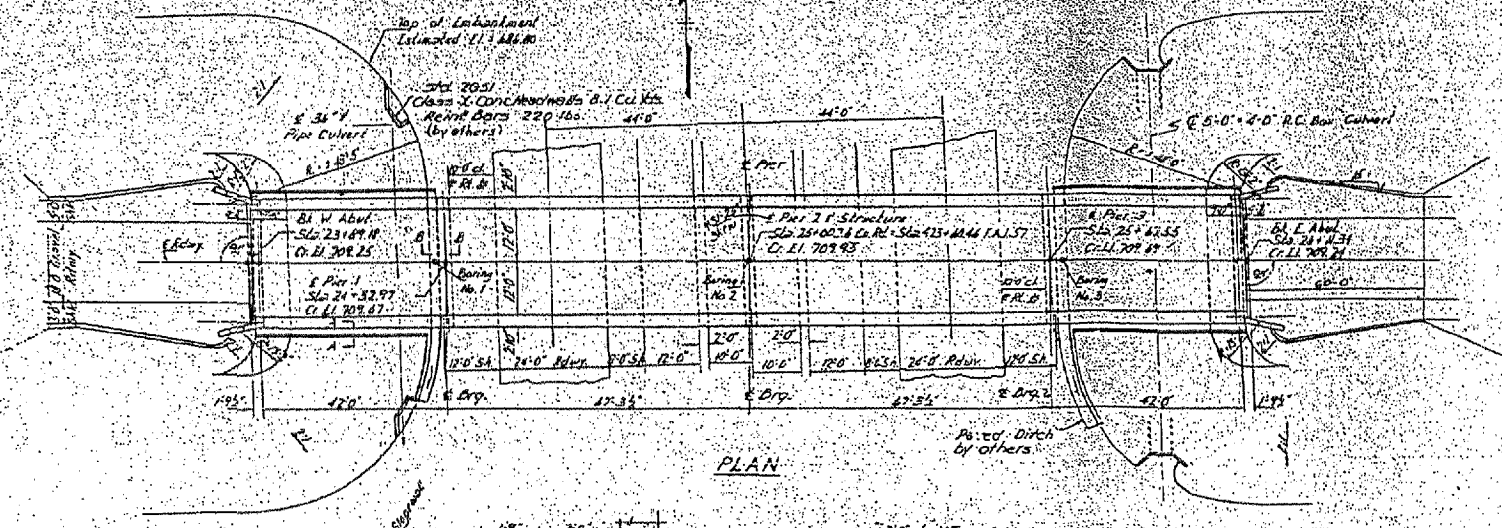
VC DATA COUNTY ROAD



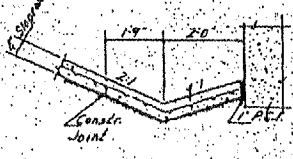
GRADE PROFILE FAJ RT. 57



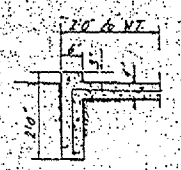
LOCATION SKETCH



PLAN



SECTION B-B



SECTION A-A

STA 423+20.46
BUILT BY
STATE OF ILLINOIS
FAJ RT. 57 - SEC. 10-31HB-1
FAJ PROJ. 1-57-548
LOADING HIS-512

NAME PLATE
See Standard 2113
See Sheet #4 for placing
of Name Plates

DESIGN STRESSES
E = 1,400 p.s.i. Super F Sub
F = 25 p.s.i. (F_{cr})
F = 20,000 p.s.i. Reinf.
I = 11,000 p.s.i. Steel
n = 10
LOADING HIS-512-44

GENERAL NOTES

Class Y Concrete shall be used throughout.
Coarse aggregate which is to be used in end piers must be absolutely free of chert, flint, lignite and soft sandstone.
The concrete floor slab shall be poured in one continuous operation between piers and shall be finished in accordance with Article 5.11.1 of the Standard Specifications.
All rivets shall be #7, unless noted.
All holes for splices shall be sub-punched 1/4" and reamed to proper size: 3/4" for 3/4" rivets; 5/8" for 3/4" rivets.
All rockers, bolsters, bearing plates, lead plates, pintles and anchor bolts shall be fabricated and set in accordance with Article 5.15 of the Standard Specifications and are included in quantity of structural steel, Est. No. 6335 1/2.
Anchor bolts shall be set before riveting down pipes over supports.
All structural steel and metal handrail shall be inspected by the Illinois Division of Highways before painting.
Painting shall comply with Article 54.5 (a) of the Standard Specifications.
The abutment is to be constructed with 12 gauge welded wire fabric 12" mesh and weighing not less than 50 lbs per sq. yd.
Metal handrail of structural steel except the anchor bolts shall receive one shop coat of red lead paint and two field coats of zinc primer. See Article 54.1 to 54.3 inclusive of the Standard Specifications.
All paint shall be furnished and applied by the contractor.
Piles at abutments shall be placed in accordance with Article 66.5 (c) of the Standard Specifications.
Use pipe culvert Type 2A construction to center with piles 24", 24" and 36" of the Standard Specifications.
Headwalls for pipe culvert under West Embankment are to conform with Standard 2051.
All structural steel shall conform to the A.S.T.M. Specification A-36.
The contractor shall drive three test piles: one concrete pile at East Abut. and one concrete pile at West Abut. with its permanent location, and one timber pile near pier 2, as directed by the Engineer before ordering the remainder of piles.

TOTAL BILL OF MATERIAL

Item	Unit	Quantity	Unit Price	Total
Barren Excavation	Cu Yds	10,975	1.25	13,718.75
Class A Excavation	Cu Yds	10,975	1.25	13,718.75
Class Y Concrete	Cu Yds	10,975	1.25	13,718.75
Structural Steel	Lbs	257,830	0.15	38,674.50
Metal Handrail	Lbs	1,000	1.00	1,000.00
Protective Coat	Sq Yds	1,000	1.00	1,000.00
Pipe Culverts - 54" Type 2A	Lin Ft	60	1.00	60.00
Reinforcement Bars	Lbs	50,000	0.15	7,500.00
Crossed Piles	Lin Ft	150	1.00	150.00
Test Piles (Timber)	Each	3	1.00	3.00
Test Piles (Concrete)	Each	2	1.00	2.00
Name Plates	Each	2	1.00	2.00
Slope Wall	Sq Yds	100	1.00	100.00

PROJ. 1-57-548
GENERAL PLAN & ELEVATION
FAJ RT. 57 - SEC. 10-31HB-1
CHAMPAIGN COUNTY

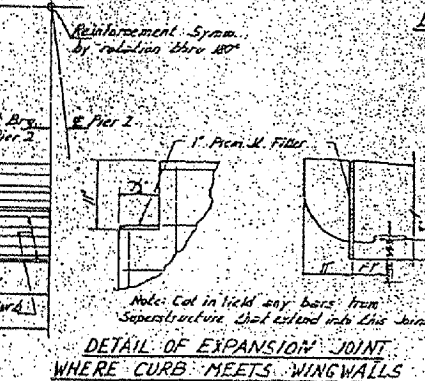
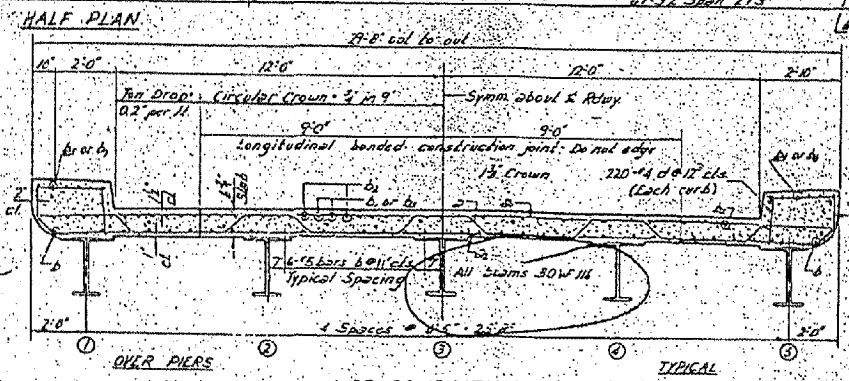
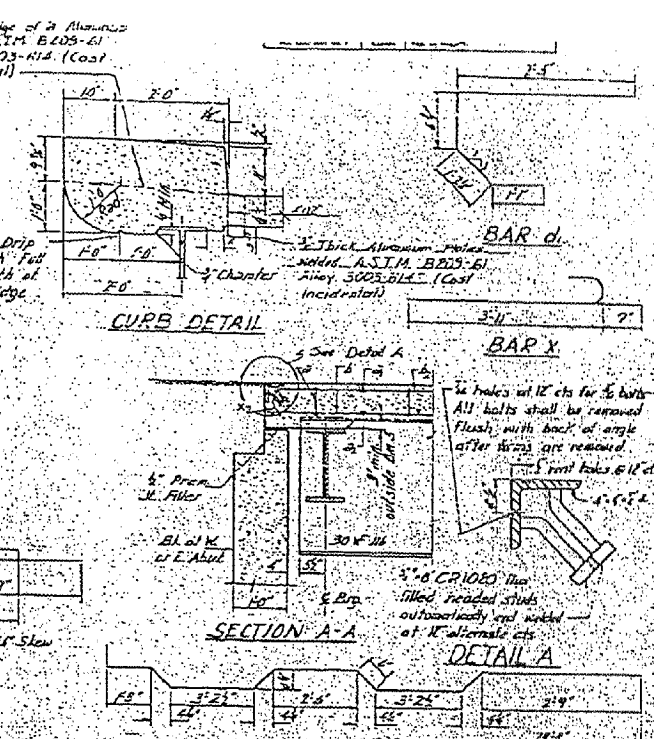
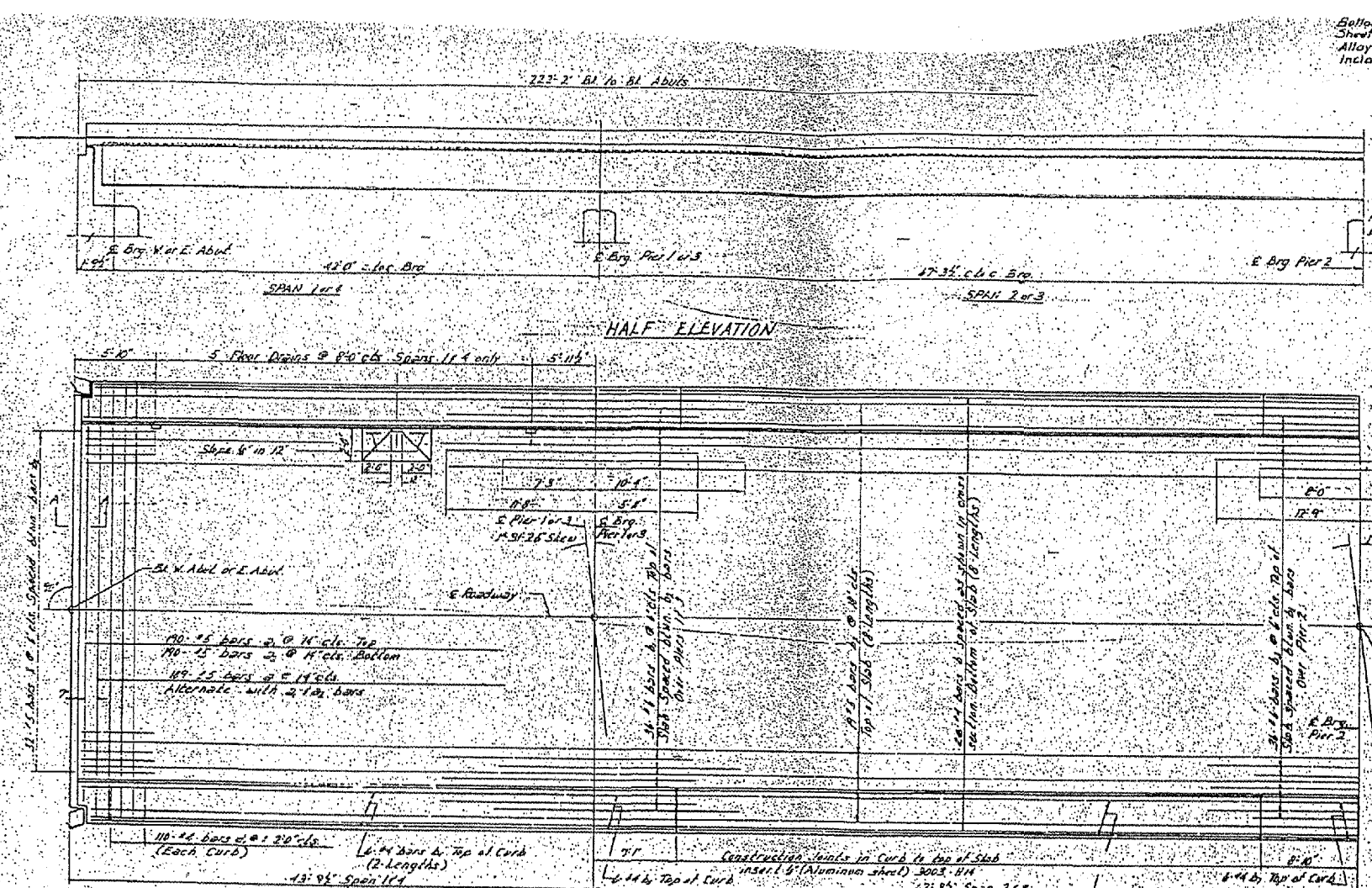
DESIGNED H.F. Gammeter
CHECKED J.P. ...
DRAWN P. ...
CHECKED F.F.M.
DATE APR 7 1961
APPROVED ...

FOR INFORMATION ONLY

010-0179 #3 1 of 4

FAI ROUTE	SECTION	COUNTY	TOTAL SHEETS	SHEET NO.
57	*	CHAMPAIGN	18	16

*(10-30HB-2) & (10-31HB)P
 CONTRACT NO. 70482



BILL OF MATERIAL

Bar	No.	Size	Length	Shape
1	185	#5	24'8"	
2	185	#5	26'8"	
3	180	#5	27'8"	
4	204	#5	25'4"	
5	72	#4	17'5"	
6	152	#5	28'5"	
7	24	#3	16'5"	
8	62	#4	22'6"	
9	74	#4	8'9"	
10	42	#4	25'0"	
11	74	#4	8'8"	
12	220	#4	13'5"	
13	220	#4	5'5"	
14	66	#5	4'6"	

Class I Concrete Curb 1945
 Reinforcement Bars 11, 36, 470
 Structural Steel 16, 19, 27, 37

* Weight of bascule, rollers, bearing plates and anchor bolts included as Structural Steel, Est. No. 6335 7A.

METHOD OF DETERMINING FILLET HEIGHT
 After all structural steel has been erected, elevations of the top flanges of the beams shall be taken at the stations shown on sheet 9. These elevations subtracted from the theoretical grade elevations adjusted for dead load deflection shown on sheet 9, minus steel thickness equals the fillet heights above top of beam.

DESIGNED: M.E. Swanson
 CHECKED: R.R. Bantilan
 DRAWN: P. Smith
 CHECKED: R.R. Bantilan

APPROVED: R.R. Bantilan

DATE: APR 7 1961

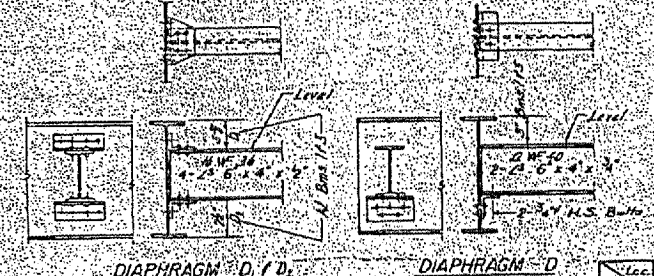
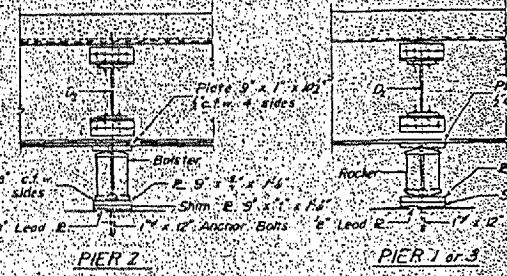
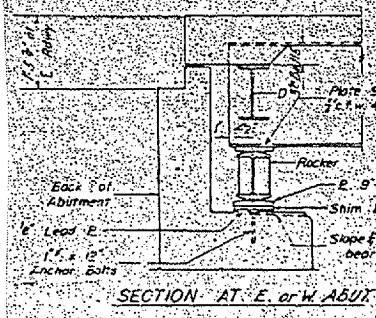
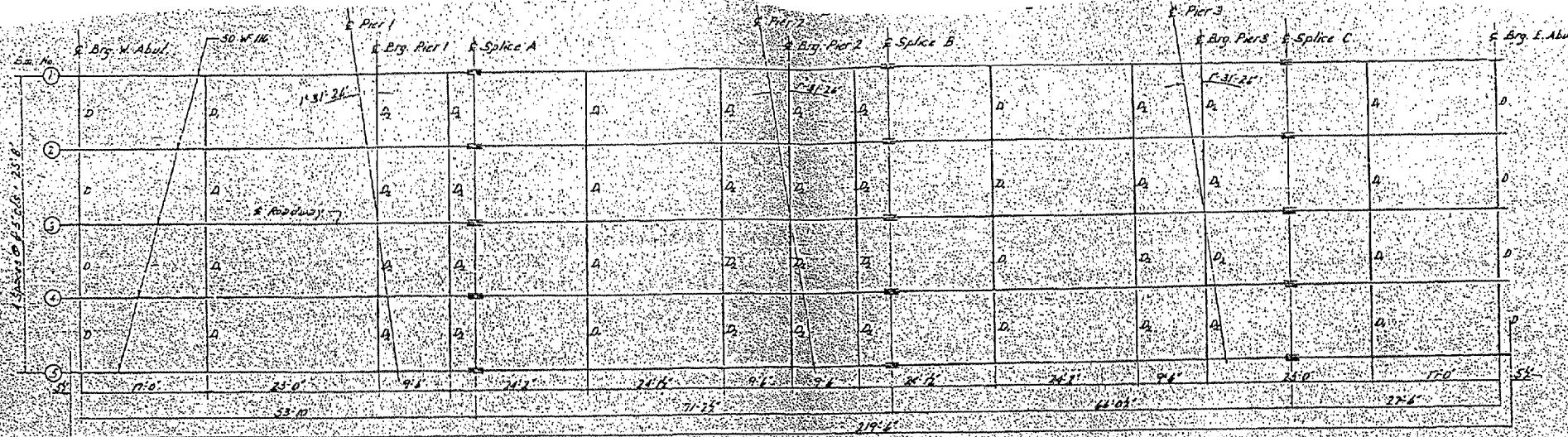
FOR INFORMATION ONLY

010-0179 #3
 2 OF 4

SUPERSTRUCTURE
 F.A.I. RT. 57, SEC. 10-31 HB-1
 CHAMPAIGN COUNTY
 STA. 423 + 60.46

FBI ROUTE	SECTION	COUNTY	TOTAL SHEETS	SHEET NO.
57	*	CHAMPAIGN	18	17

(10-30HB-2) & (10-31HB)P
 CONTRACT NO. 70482



ELEVATION TOP OF BEAMS

Loc.	E. Brg.	Pier 1	Splice A	Pier 2	Splice B	Pier 3	Splice C	E. Brg.
A	708.571	708.912	709.019	709.247	709.271	709.659	709.659	709.659
B	708.478	709.018	709.111	709.241	709.271	709.659	709.659	709.659
S	708.700	709.058	709.150	709.278	709.311	709.679	709.679	709.679

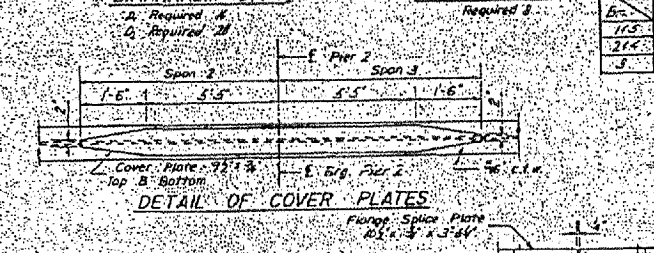
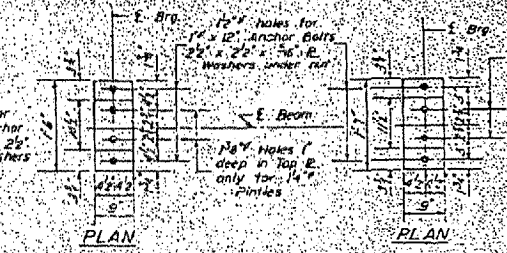
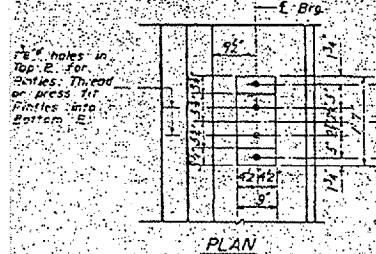
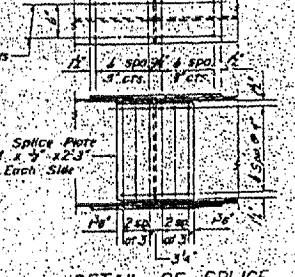
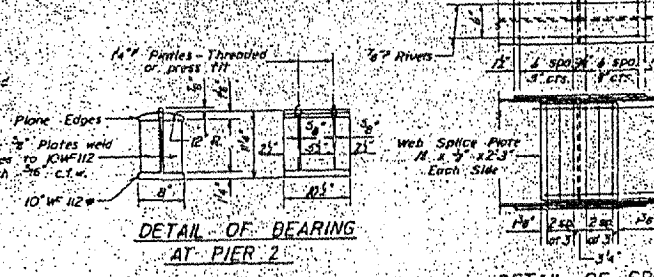
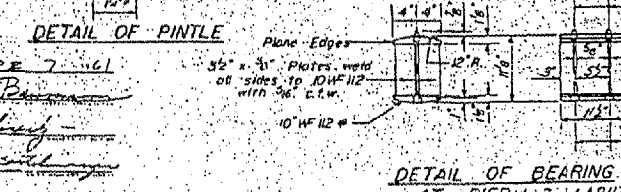


TABLE OF DIMENSIONS

ALL SIZES
1/4"
3/8"
1/2"

DESIGNED *M.E. Korman*
 CHECKED *R.P. Homan*
 DRAWN *W.A. Soussan*
 APPROVED *R.P. Homan*



STRUCTURAL STEEL
 F.A.I. RT-57 SEC. 10-31HB-1
 CHAMPAIGN COUNTY
 STA 475 + 60.46

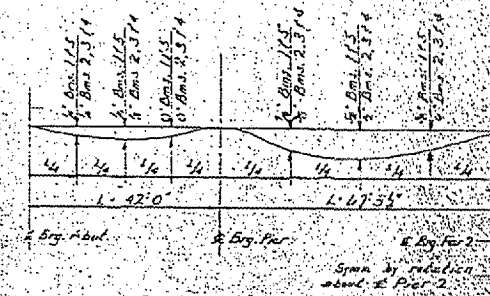
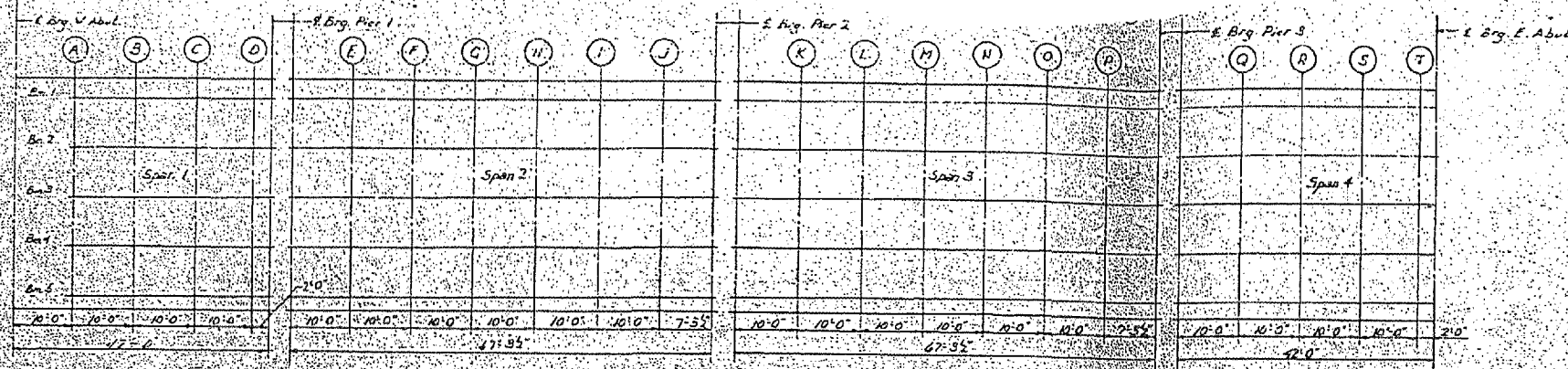
FOR INFORMATION ONLY

010-0179 #3 3 of 4

FAI ROUTE	SECTION	COUNTY	TOTAL SHEETS	SHEET NO.
57	#	CHAMPAIGN	18	18

*(10-30HB-2) & (10-31HB)P

CONTRACT NO. 70482



DEAD LOAD DEFLECTION DIAGRAM

Includes weight of concrete only.

Note: The above deflections are not for use in the field if the Engineer is working the Structural Grade Elevations adjusted for Dead Load Deflection.

SPAN 1

Station	Span	Offset from C.P.	Theoretical Grade Elevations	Adjusted Grade Elevations for Dead Load Deflection
---------	------	------------------	------------------------------	--

SPAN 1

W. Abut.	2	2396.972	6.416	709.234	709.236
W. Abut.	3	2396.972	.000	709.271	709.271
W. Abut.	4	2396.972	6.416	709.236	709.236
A	1	2400.972	6.416	709.333	709.341
A	2	2400.972	.000	709.316	709.316
A	3	2400.972	6.416	709.331	709.341
B	1	2414.972	6.416	709.443	709.468
B	2	2414.972	.000	709.427	709.427
B	3	2414.972	6.416	709.443	709.468
C	1	2428.972	6.416	709.559	709.584
C	2	2428.972	.000	709.543	709.543
C	3	2428.972	6.416	709.559	709.584
D	1	2436.972	6.416	709.643	709.668
D	2	2436.972	.000	709.627	709.627
D	3	2436.972	6.416	709.643	709.668
E. Brg. Pier 1	1	2432.972	6.416	709.431	709.439
E. Brg. Pier 1	2	2432.972	.000	709.415	709.415
E. Brg. Pier 1	3	2432.972	6.416	709.431	709.439
E. Brg. Pier 1	4	2432.972	12.832	709.148	709.148
E. Brg. Pier 1	5	2432.972	11.831	709.169	709.169
A	1	2440.972	12.832	709.231	709.240
A	2	2440.972	11.831	709.219	709.219
B	1	2448.972	12.832	709.367	709.372
B	2	2448.972	11.831	709.341	709.341
C	1	2456.972	12.832	709.464	709.464
C	2	2456.972	11.831	709.443	709.443
D	1	2464.972	12.832	709.547	709.547
D	2	2464.972	11.831	709.547	709.547
E. Brg. Pier 1	1	2442.972	11.831	709.363	709.363
E. Brg. Pier 1	2	2442.972	11.831	709.363	709.363

SPAN 2

SPAN 2

E. Brg. Pier 2	1	2442.972	6.416	709.230	709.247
E. Brg. Pier 2	2	2442.972	.000	709.244	709.244
E. Brg. Pier 2	3	2442.972	6.416	709.230	709.247
F	1	2452.972	6.416	709.281	709.281
F	2	2452.972	.000	709.281	709.281
F	3	2452.972	6.416	709.281	709.281
G	1	2462.972	6.416	709.307	709.307
G	2	2462.972	.000	709.307	709.307
G	3	2462.972	6.416	709.307	709.307
H	1	2472.972	6.416	709.304	709.308
H	2	2472.972	.000	709.304	709.304
H	3	2472.972	6.416	709.304	709.308
I	1	2482.972	6.416	709.323	709.323
I	2	2482.972	.000	709.323	709.323
I	3	2482.972	6.416	709.323	709.323
J	1	2492.972	6.416	709.323	709.323
J	2	2492.972	.000	709.323	709.323
J	3	2492.972	6.416	709.323	709.323
E. Brg. Pier 2	1	2500.972	6.416	709.314	709.316
E. Brg. Pier 2	2	2500.972	.000	709.310	709.310
E. Brg. Pier 2	3	2500.972	6.416	709.314	709.316
E	1	2441.972	11.832	709.634	709.634
E	2	2441.972	11.832	709.634	709.634
F	1	2452.972	11.832	709.693	709.704
F	2	2452.972	11.832	709.693	709.704
G	1	2462.972	11.832	709.741	709.751
G	2	2462.972	11.832	709.741	709.751
H	1	2472.972	11.832	709.774	709.782
H	2	2472.972	11.832	709.774	709.782
I	1	2482.972	11.832	709.803	709.803
I	2	2482.972	11.832	709.803	709.803
J	1	2492.972	11.832	709.817	709.809
J	2	2492.972	11.832	709.817	709.809
E. Brg. Pier 2	1	2500.972	11.832	709.817	709.817
E. Brg. Pier 2	2	2500.972	11.832	709.817	709.817

SPAN 3

SPAN 3

A	1	2510.972	6.416	709.210	709.223
A	2	2510.972	.000	709.244	709.244
A	3	2510.972	6.416	709.210	709.223
B	1	2520.972	6.416	709.252	709.259
B	2	2520.972	.000	709.252	709.252
B	3	2520.972	6.416	709.252	709.259
C	1	2530.972	6.416	709.249	709.252
C	2	2530.972	.000	709.249	709.249
C	3	2530.972	6.416	709.249	709.252
D	1	2540.972	6.416	709.271	709.280
D	2	2540.972	.000	709.271	709.271
D	3	2540.972	6.416	709.271	709.280
E. Brg. Pier 3	1	2548.972	6.416	709.271	709.271
E. Brg. Pier 3	2	2548.972	.000	709.271	709.271
E. Brg. Pier 3	3	2548.972	6.416	709.271	709.271
A	1	2510.972	11.832	709.611	709.611
A	2	2510.972	11.832	709.611	709.611
B	1	2520.972	11.832	709.704	709.704
B	2	2520.972	11.832	709.704	709.704
C	1	2530.972	11.832	709.774	709.774
C	2	2530.972	11.832	709.774	709.774
D	1	2540.972	11.832	709.817	709.817
D	2	2540.972	11.832	709.817	709.817
E. Brg. Pier 3	1	2548.972	11.832	709.817	709.817
E. Brg. Pier 3	2	2548.972	11.832	709.817	709.817

SPAN 4

SPAN 4

O	1	2577.533	6.416	709.377	709.377
O	2	2577.533	.000	709.377	709.377
O	3	2577.533	6.416	709.377	709.377
A	1	2587.533	6.416	709.428	709.444
A	2	2587.533	.000	709.428	709.428
A	3	2587.533	6.416	709.428	709.444
S	1	2597.533	6.416	709.372	709.378
S	2	2597.533	.000	709.404	709.412
S	3	2597.533	6.416	709.372	709.378
T	1	2607.533	6.416	709.255	709.254
T	2	2607.533	.000	709.287	709.287
T	3	2607.533	6.416	709.255	709.254
E. Brg. Pier 4	1	2609.533	6.416	709.230	709.238
E. Brg. Pier 4	2	2609.533	.000	709.264	709.264
E. Brg. Pier 4	3	2609.533	6.416	709.230	709.238
Q	1	2577.533	11.832	709.436	709.478
Q	2	2577.533	11.832	709.478	709.478
A	1	2587.533	11.832	709.541	709.587
A	2	2587.533	11.832	709.581	709.587
S	1	2597.533	11.832	709.716	709.720
S	2	2597.533	11.832	709.716	709.720
T	1	2607.533	11.832	709.154	709.160
T	2	2607.533	11.832	709.154	709.160
E. Brg. Pier 4	1	2609.533	11.832	709.154	709.154
E. Brg. Pier 4	2	2609.533	11.832	709.154	709.154

DESIGNED: R.P. M...
 CHECKED: H.E. G...
 DRAWN: P. H...
 APPROVED: P.P. B...
 DATE: APR 7 1961

FOR INFORMATION ONLY

010-0179 #3 4or4
 TOP OF SLAB ELEVATION
 F.A.I. RT. 57 - SEC. 10-31HB-1
 CHAMPAIGN COUNTY
 STA. 473 + 60.46