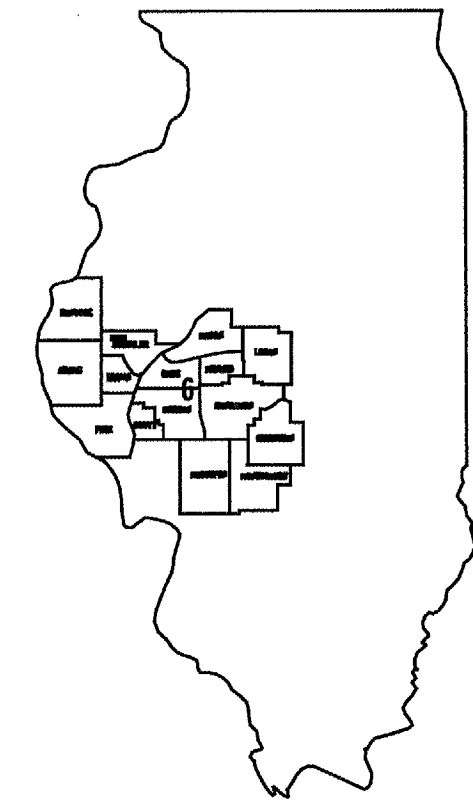
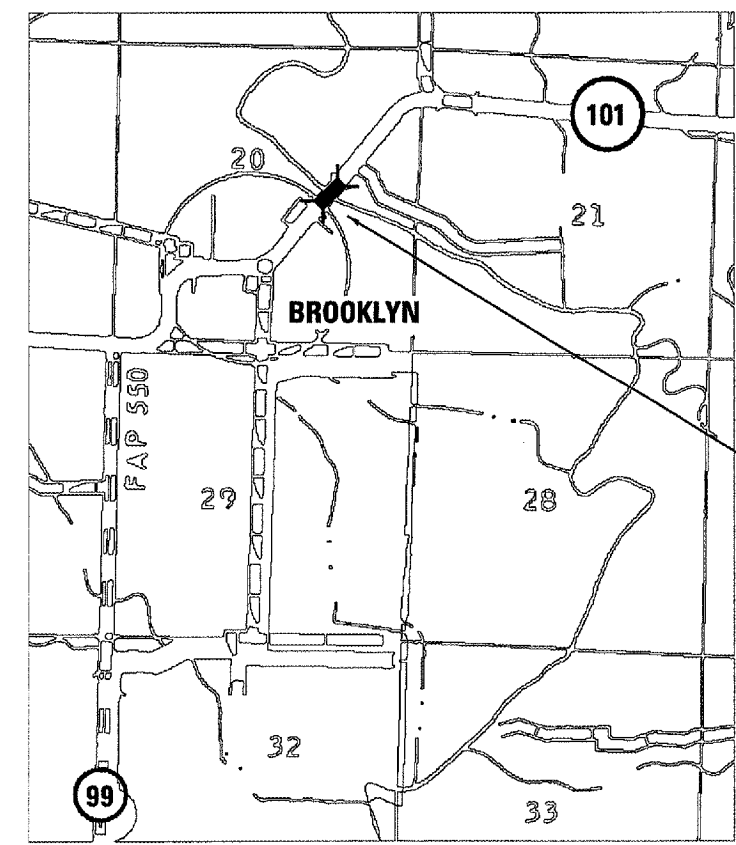


SEE PAGE 2 FOR INDEX OF SHEETS AND HIGHWAY STANDARDS

STATE OF ILLINOIS  
DEPARTMENT OF TRANSPORTATION  
DIVISION OF HIGHWAYS  
**PLANS FOR PROPOSED  
CONTRACT MAINTENANCE**  
FAP 713 (IL 101)  
OVER LAMOINE RIVER  
SECTION (120BR)I-1  
SCHUYLER COUNTY  
C-96-011-06



LOCATION OF SECTION INDICATED THUS: ■



SN 085-0016

NET LENGTH OF PROJECT: 486 FT = 0.09 MI

J. U. L. I. E.  
JOINT UTILITY LOCATION INFORMATION FOR EXCAVATION  
1-800-892-0123

DESIGN & PLANNING ENGINEER: CECIL DOWNING  
BRIDGE INSPECTOR ENGINEER: DAVE COPENBARGER  
PHONE: (217) 785-5306

**CONTRACT NO. 72A21**

STATE OF ILLINOIS  
DEPARTMENT OF TRANSPORTATION  
DIVISION OF HIGHWAYS

SUBMITTED JANUARY 10 2006  
Chris M Reed  
DISTRICT ENGINEER

February 3, 2006  
Mike Fine / P.E.  
ENGINEER OF DESIGN AND ENVIRONMENT

February 3, 2006  
Milton R. Sees, P.E.  
DIRECTOR, DIVISION OF HIGHWAYS

INDEX OF SHEETS

- 1 COVER SHEET
- 2 GENERAL INFORMATION
- 3 SUMMARY OF QUANTITIES
- 4 TRAFFIC STAGING PLAN
- 5 STRIPING DETAIL
- 6 WIDTH RESTRICTION SIGNING PLAN
- 7-9 BRIDGE PLANS
- 9a. LOOP PLACEMENT DETAILS

GENERAL NOTES

STANDARDS

- 701001-01
- 701006-02
- 701201-02
- 701301-02
- 701321-08
- 702001-05

<b>STATE OF ILLINOIS DEPARTMENT OF TRANSPORTATION DIVISION OF HIGHWAYS DISTRICT 6</b>	
EXAMINED	January 9 20 06
	<i>[Signature]</i> ENGINEER OF OPERATIONS
EXAMINED	Jan 9 20 06
	<i>[Signature]</i> ENGINEER OF PROGRAM IMPLEMENTATION
EXAMINED	JANUARY 6 20 06
	<i>[Signature]</i> ENGINEER OF PROGRAM DEVELOPMENT

GENERAL INFORMATION  
FAP 713 (IL 101)  
SECTION (120BR)I-1  
SCHUYLER COUNTY

Rev.

SUMMARY OF QUANTITIES

ITEM NO.	DESCRIPTION	UNIT	100% STATE - SFTY-2A
			QUANTITY
50102400	CONCRETE REMOVAL	CU YD	0.5
50300300	PROTECTIVE COAT	SQ YD	26
50301200	CONCRETE WEARING SURFACE	SQ YD	26
50400405	<i>PRECAST, PRESTRESSED CONCRETE DECK BEAMS (21" DEPTH)</i>	SQ FT	195
50800205	REINFORCEMENT BARS, EPOXY COATED	POUND	590
67100100	MOBILIZATION	L SUM	1
70100405	TRAFFIC CONTROL AND PROTECTION, STANDARD 701321	EACH	1
70100450	TRAFFIC CONTROL AND PROTECTION, STANDARD 701201	L SUM	1
70106500	TEMPORARY BRIDGE TRAFFIC SIGNALS	EACH	1
70300230	TEMPORARY PAVEMENT MARKING - LINE 5"	FOOT	1800
70400100	TEMPORARY CONCRETE BARRIER	FOOT	380
* 78001120	PAINT PAVEMENT MARKING - LINE 5"	FOOT	2925
78300105	PAVEMENT MARKING REMOVAL	FOOT	2025
X0320047	REMOVAL OF EXISTING PPC DECK BEAMS	SQ FT	198
X0321781	MECHANICAL SPLICE	EACH	76
X0322752	WORK ZONE PAVEMENT MARKING REMOVAL	FOOT	1800
X7200201	WIDTH RESTRICTION SIGN	L SUM	1
Z0001900	ASBESTOS BEARING PAD REMOVAL	EACH	2
Δ Z0030250	IMPACT ATTENUATOR, TEMPORARY (NON-REDIRECTIVE), TEST LEVEL 3	EACH	2

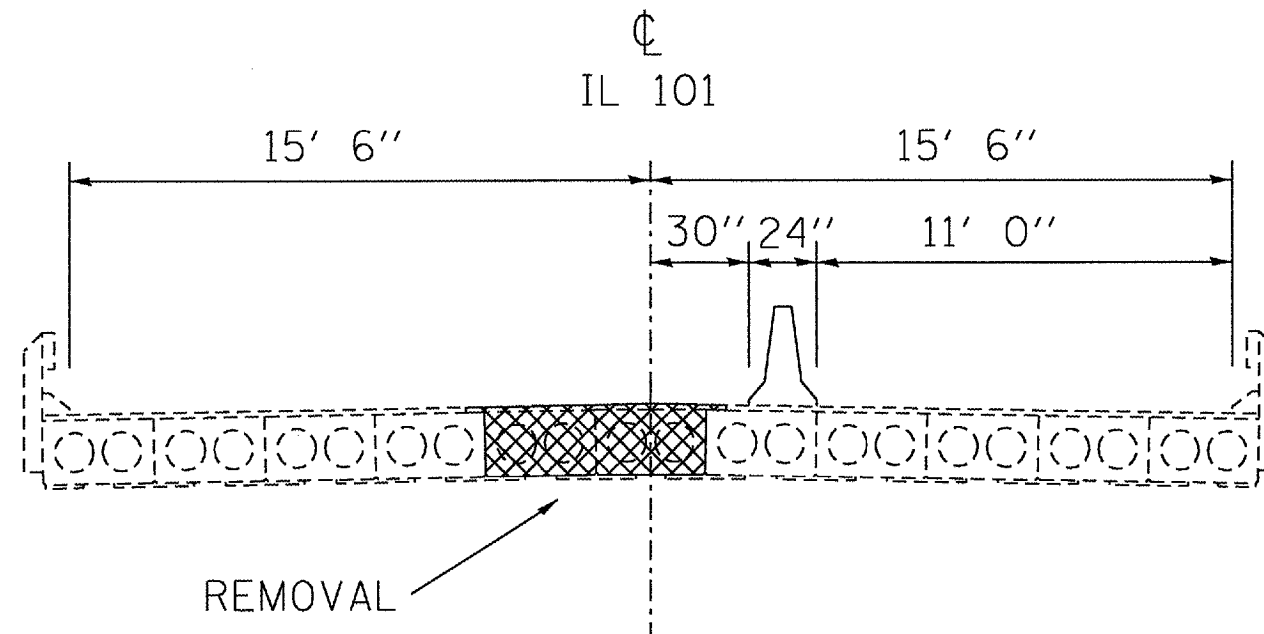
\* SPECIALTY ITEMS  
 Δ SFTY-3N

SUMMARY OF QUANTITIES  
 FAP 713 (IL 101)  
 SECTION (120BR)I-1  
 SCHUYLER COUNTY

CROSS SECTION - LOOKING NORTHEAST

STAGE 1 CONST.

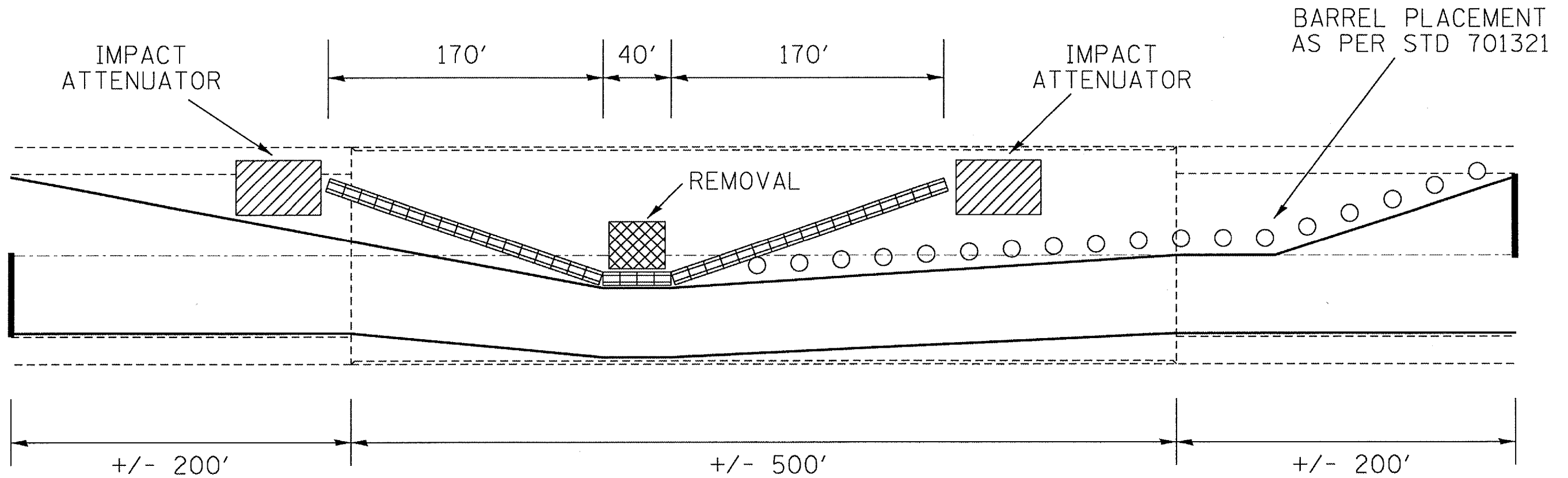
STAGE 1 TRAFFIC



SEE STD 701321 FOR PLAN  
VIEW OF TRAFFIC CONTROL

(NOT TO SCALE)

TRAFFIC STAGING DETAIL  
FAP 713 (IL 101)  
SECTION (120BR)I-1  
SCHUYLER COUNTY

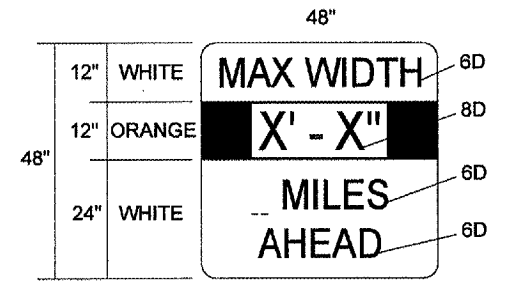
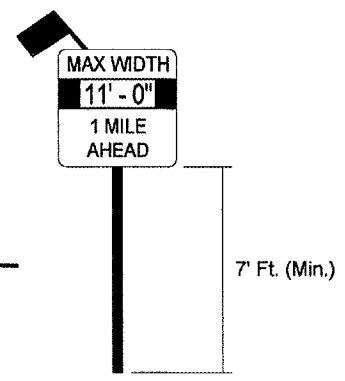
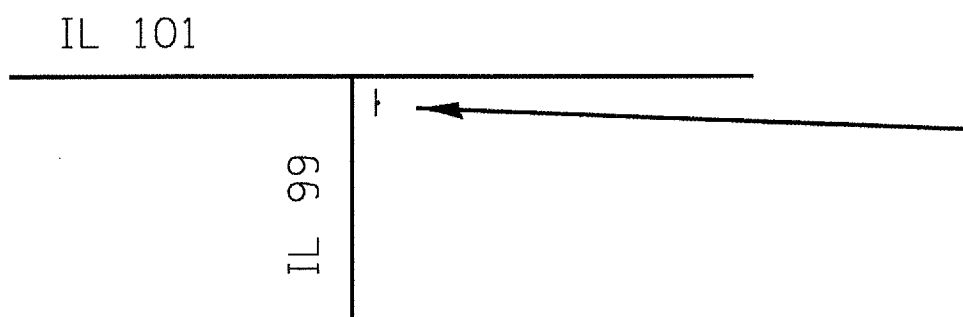
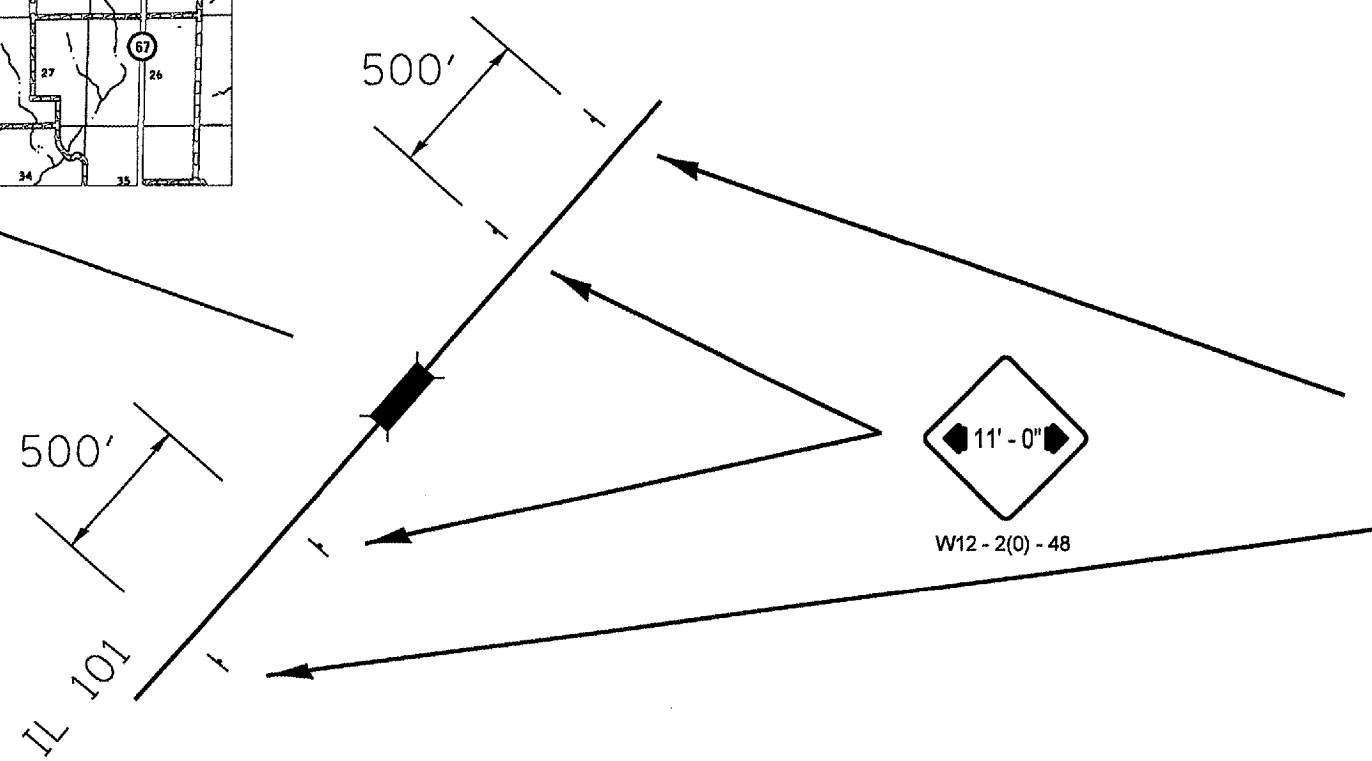
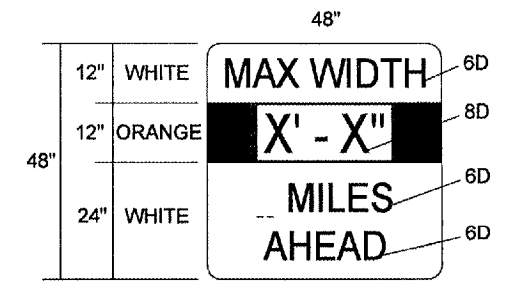
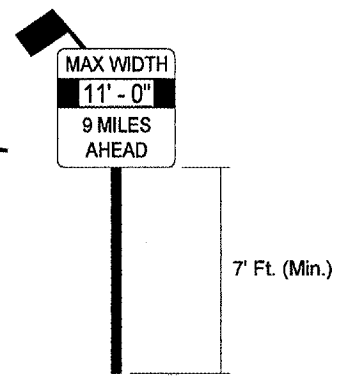
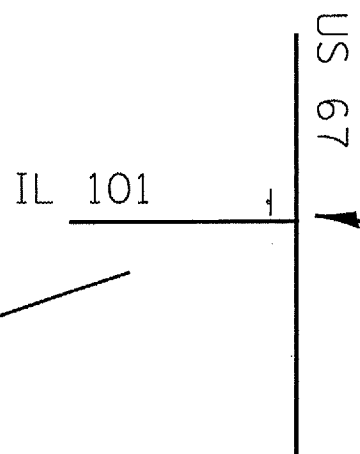
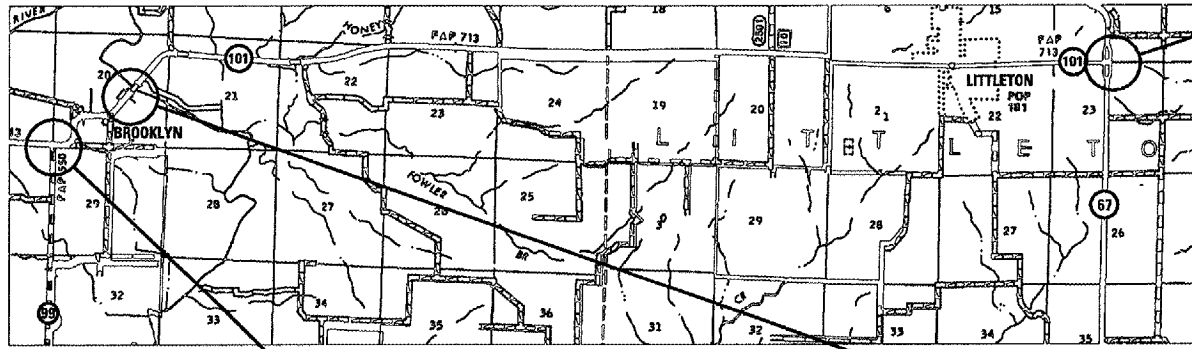


NOTES:

REMOVE CENTER LINE AND NORTHBOUND EDGE LINE THROUGH ENTIRE CONSTRUCTION AREA AND PLACE TEMPORARY MARKINGS AS DETAILED ABOVE. WHEN REPLACING PERMANENT MARKINGS, PAINT BOTH EDGE LINES. PASSING ZONES SHALL MATCH CONDITIONS EXISTING BEFORE INITIAL STRIPING REMOVAL.

(NOT TO SCALE)

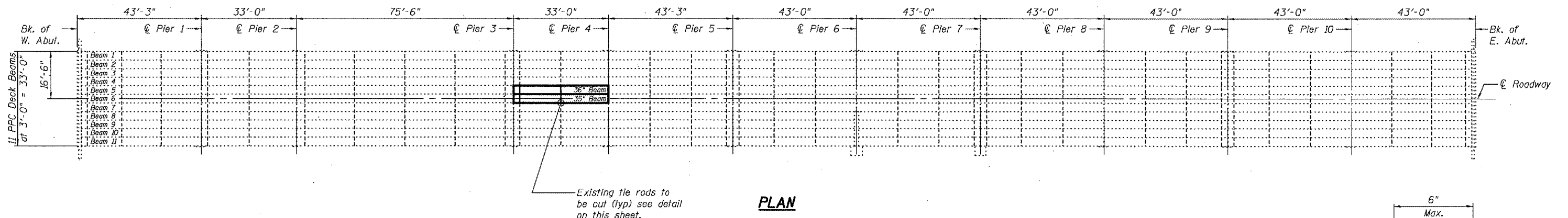
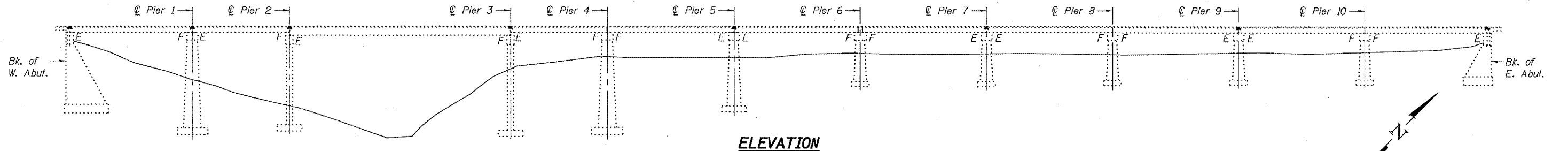
STRIPING DETAIL  
FAP 713 (IL 101)  
SECTION (120BR)I-1  
SCHUYLER COUNTY



(NOT TO SCALE)  
 MAX WIDTH SIGNING  
 FAP 713 (IL 101)  
 SECTION (120BR)I-1  
 SCHUYLER COUNTY

STATE OF ILLINOIS  
DEPARTMENT OF TRANSPORTATION

ROUTE NO.	SECTION	COUNTY	TOTAL SHEETS	SHEET NO.
		Schuyler	9	7
SHEET NO. 1 3 SHEETS				
Contract Number: 72A21				



**DESIGN STRESSES**

(New Construction)  
FIELD UNITS  
f'c = 3,500 psi  
fy = 60,000 psi (Reinforcement)

PRECAST PRESTRESSED UNITS  
f'c = 5,000 psi  
f'ci = 4,000 psi  
f's = 270,000 (1/2" low relaxation strands)  
f'si = 201,960 (1/2" low relaxation strands)

**GENERAL NOTES**

Plan dimensions and details relative to existing structure have been taken from existing plans and are subject to nominal construction variations. It shall be the Contractor's responsibility to verify such dimensions and details in the field and make necessary approved adjustments prior to construction or ordering of materials. Such variations shall not be cause for additional compensation for a change in the scope of the work, however, the Contractor will be paid for the quantity actually furnished at the unit price bid for the work.

Any damage done to the bridge during beam removal shall be repaired by the Contractor. Cost to be included in the cost of "Removal of Existing P.P.C. Deck Beams".

Reinforcement bars shall conform to the requirements of AASHTO M 31 or M 322 Grade 60.

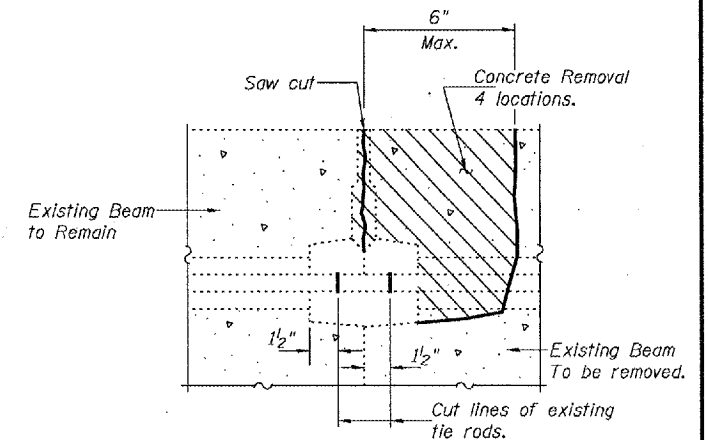
Temporary concrete barrier shall only be anchored into the overlay and not the PPC Deck Beams.

All structural steel shall be shop painted with the inorganic zinc rich primer per AASHTO M300, Type 1. Cost included with Furnishing and Erecting Structural Steel.

Existing reinforcement extending into the removal area shall be cleaned, straightened and incorporated into the new construction. Any reinforcement bars that are damaged during concrete removal shall be replaced with an approved bar splicer or anchorage system. Cost shall be included with Concrete Removal.

For stage construction details see Roadway Plans.

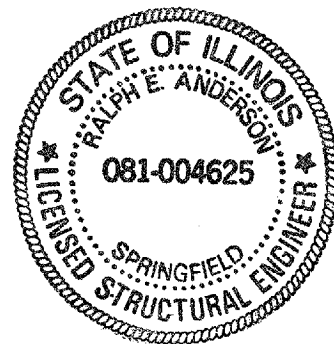
The deck surface shall have its final finish tined according to Article 420.11(e)(1) of the Standard Specifications. Cost included with Concrete Wearing Surface.



**TOTAL BILL OF MATERIAL**

ITEM	UNIT	QUANTITY
Concrete Removal	Cu. Yd.	0.5
Removal of Existing PPC Deck Beams	Sq. Ft.	198
Concrete Wearing Surface	Sq. Yd.	26
PPC Deck Beams (21" Depth)	Sq. Ft.	195
Protective Coat	Sq. Yd.	26.0
Mechanical Splicers	Each	76
* Asbestos Bearing Pad Removal	Each	2
Reinforcement Bars, Epoxy Coated	Pound	590

\*At Pier 3



DESIGNED: Victor H. Veliz  
CHECKED: Adrian T. Holloway  
DRAWN: [Signature]  
CHECKED: VHV/A.T.H.

EXAMINED: John A. Morris  
PASSED: Ralph E. Anderson

January 18, 2006

Expires: November 30, 2006

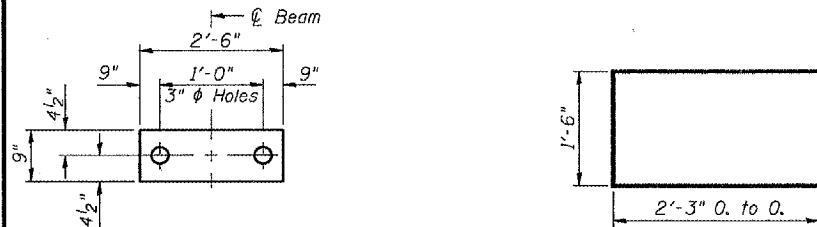
**PLAN AND ELEVATION**  
**IL 101**  
**SCHUYLER COUNTY**  
**SN 085-0016**

STATE OF ILLINOIS  
DEPARTMENT OF TRANSPORTATION

ROUTE NO.	SECTION	COUNTY	TOTAL SHEETS	SHEET NO.
		Schuyler	9	8
FED. ROAD DIST. NO. 7	ILLINOIS	FED. AID PROJECT		

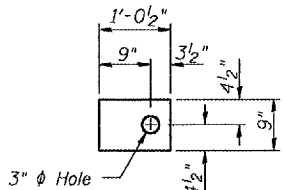
SHEET NO. 2  
3 SHEETS

Contract Number: T2A21

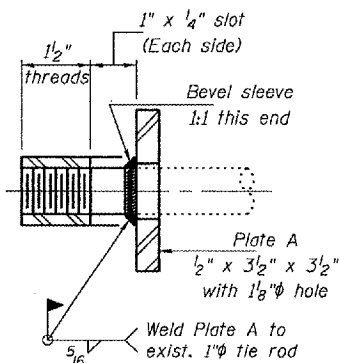


**FABRIC BEARING PAD**  
(Omit holes for Expansion Pads)

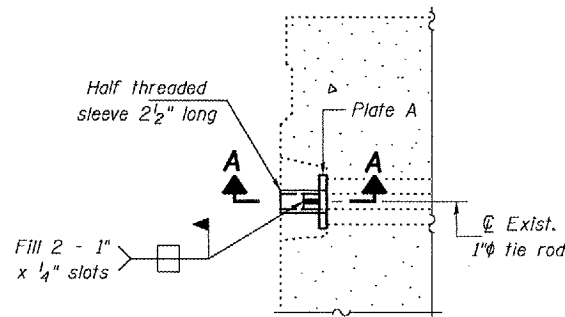
**BAR U**



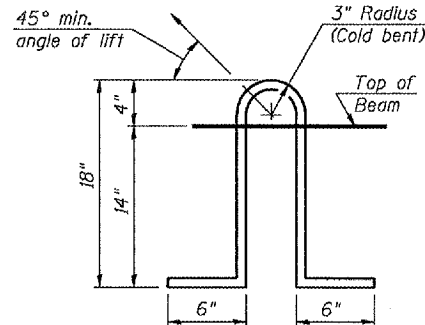
**FABRIC ADJUSTING SHIM**  
(Omit hole for Expansion Shims)



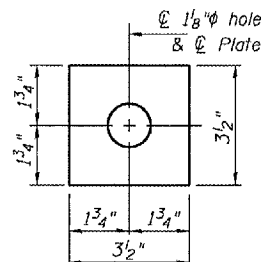
**SECTION A-A**  
(4 Required)



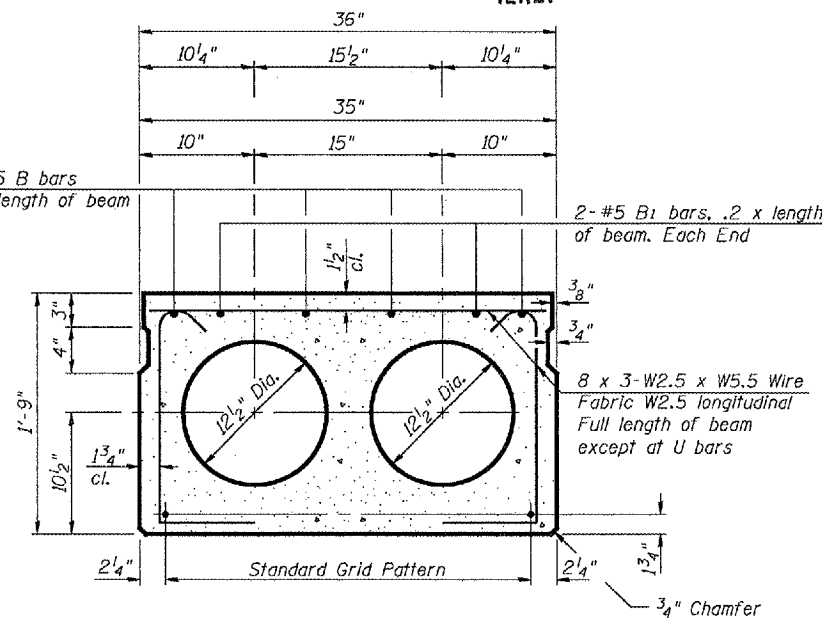
**DETAIL A**



**LIFTING LOOP DETAIL**



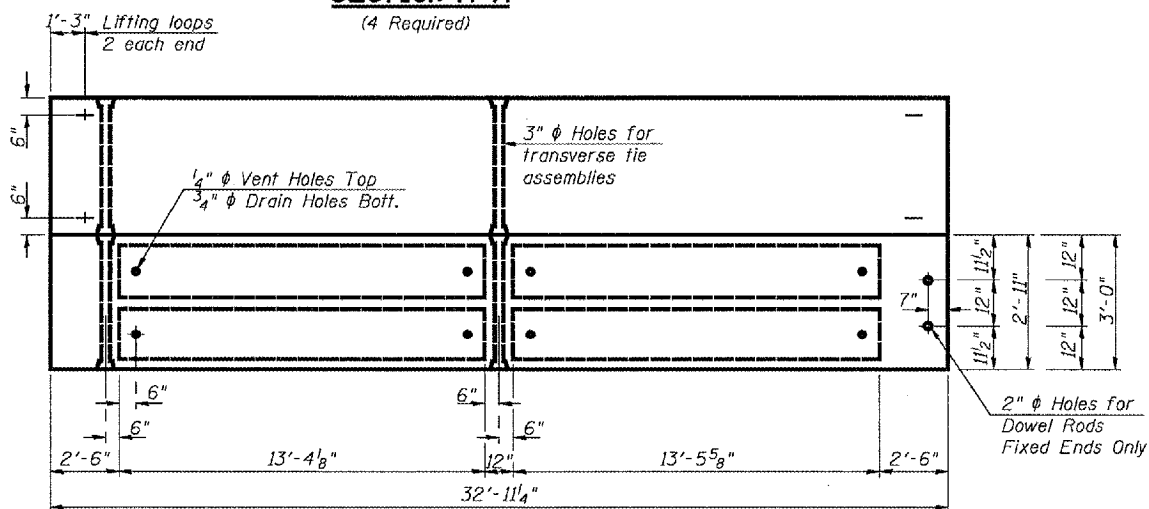
**PLATE A**  
(4 Required)



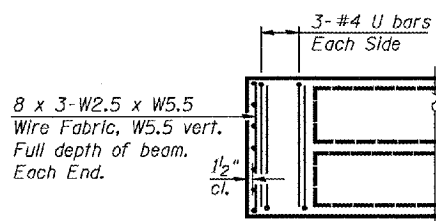
**TYPICAL SECTION**

1/2"  $\phi$  Strands, Each Strand Stressed to 30,900 Lbs.  
6-Strands 1 3/4" up

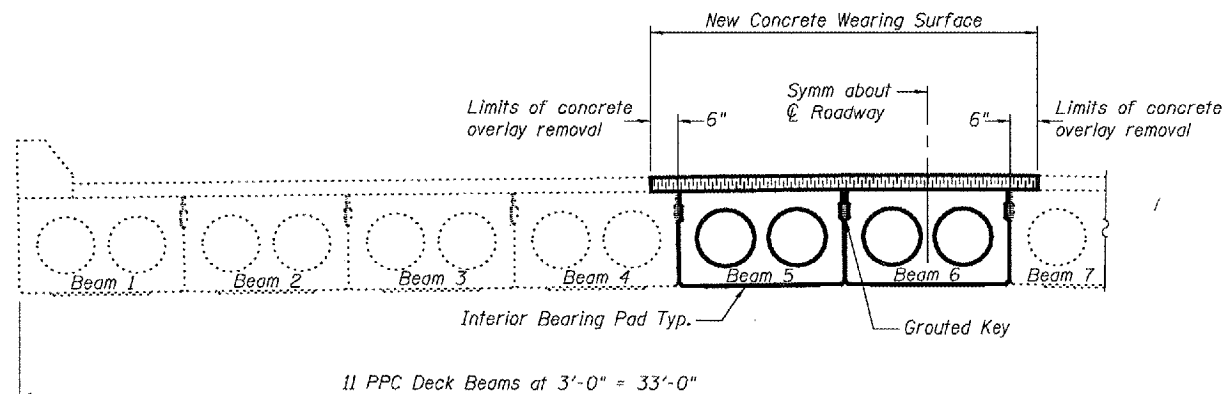
Note:  
Place strands symmetrically about  $\phi$  of beam.



**PLAN**



**END PLAN**



**HALF CROSS SECTION**  
(Looking North)

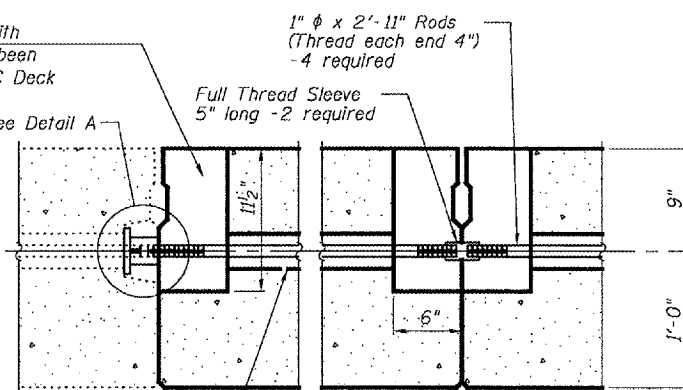
**NOTES**

Prestressing steel shall be uncoated high strength, low relaxation 7-wire strand, Grade 270. The nominal diameter shall be 1/2" and the nominal cross-sectional area shall be 0.153 sq. in. Lifting loops shall be 2-1/2"  $\phi$ -270 ksi strands, as shown. The 1"  $\phi$  rods in the transverse tie assembly shall be tightened to a snug fit and the threads set. Pockets that receive transverse tie bar on outside shall be filled with grout after transverse tie assembly is in place. Non prestressing steel shall conform to AASHTO M31 or M322 Grade 60. The bearing seat surfaces shall be adjusted by shimming to assure firm and even bearing. Two 1/8" fabric adjusting shims of the dimensions shown shall be provided for each bearing. Keyway surfaces shall be cleaned to remove form oil or other bond breaking material prior to shipment of the beams. Cleaning shall be done by sandblasting the keyway areas between top of the beam and the bottom edge of the key. Corrosion Inhibitor, as covered in the Special Provisions, shall be used in the concrete for precast prestressed concrete deck beams. Required Release Strength, f'ci, shall be 4000 p.s.i.

**BILL OF MATERIAL**

Bar	No.	Size	Length	Shape
Precast Prestressed Conc. Deck Bms.			Sq. Ft.	198

**BEAM DETAILS**  
**IL 101**  
**SCHUYLER COUNTY**  
**SN 085-0016**



**TYPICAL TRANSVERSE TIE ASSEMBLY**

DESIGNED	V.H.V.
CHECKED	A.T.H.
DRAWN	Drew Christopher
CHECKED	V.H.V. A.T.H.

DESIGNED	January 13, 2006
EXAMINED	John A. Morris
PASSED	Ralph E. Anderson

PD-3-S 10-22-04

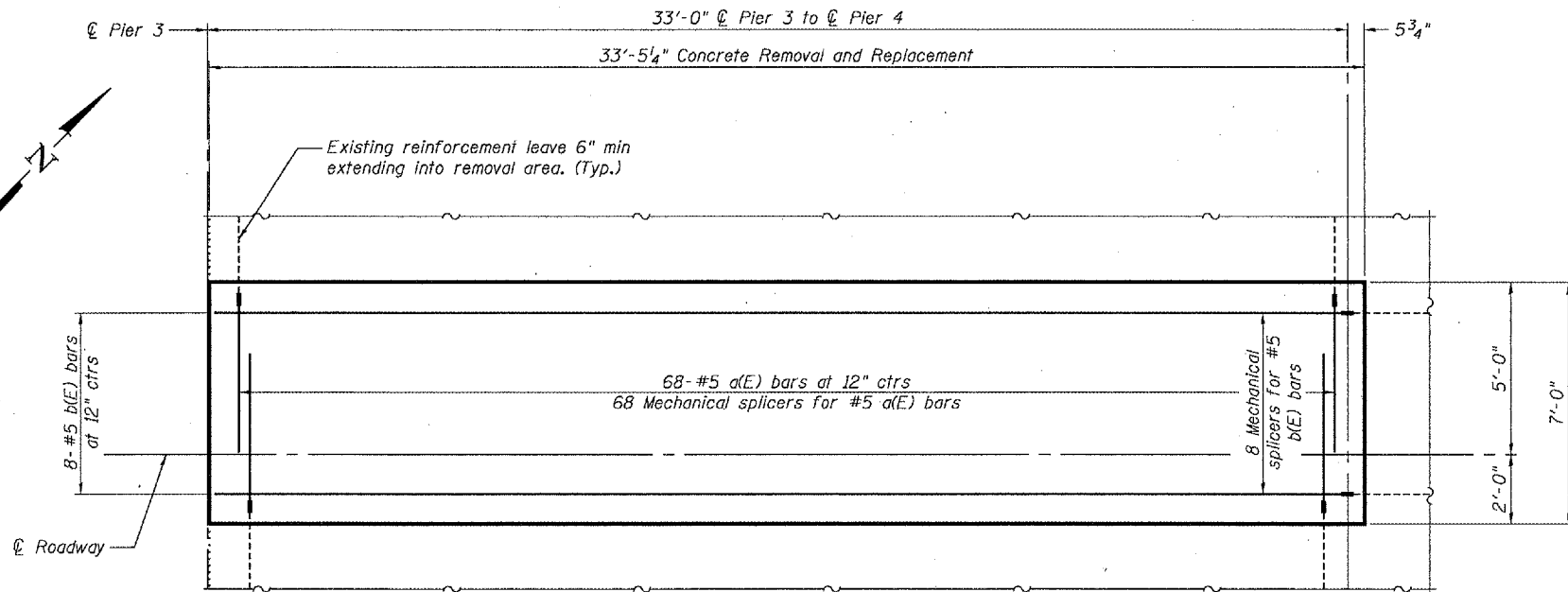


STATE OF ILLINOIS  
DEPARTMENT OF TRANSPORTATION

ROUTE NO.	SECTION	COUNTY	TOTAL SHEETS	SHEET NO.
		Schuyler	9	9
FED. ROAD DIST. NO. 7	ILLINOIS	FED. AID PROJECT		

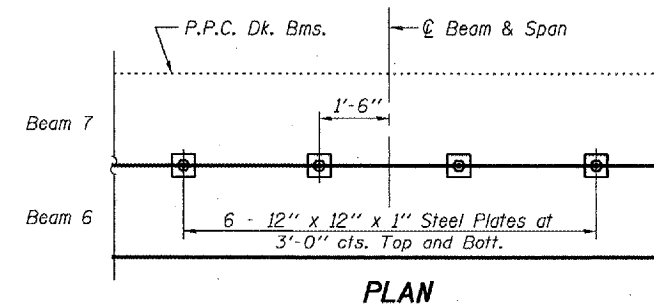
Contract Number: 72A21

SHEET NO. 3  
3 SHEETS

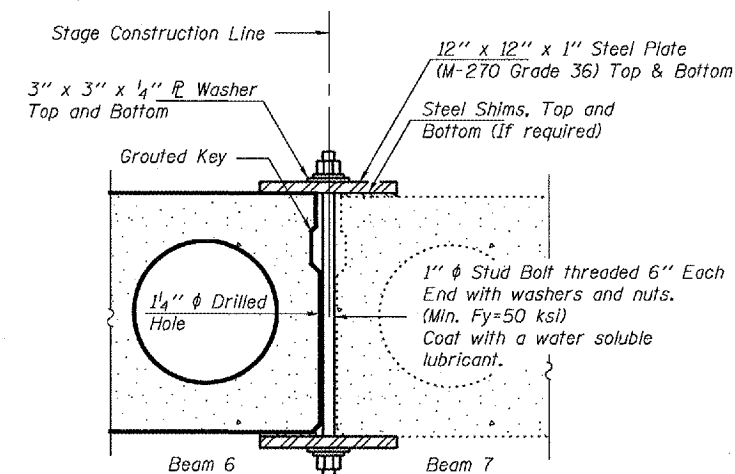


**PARTIAL OVERLAY PLAN**

**Min Bar lap**  
#5 = 2'-2"



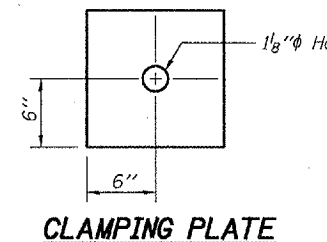
**PLAN**



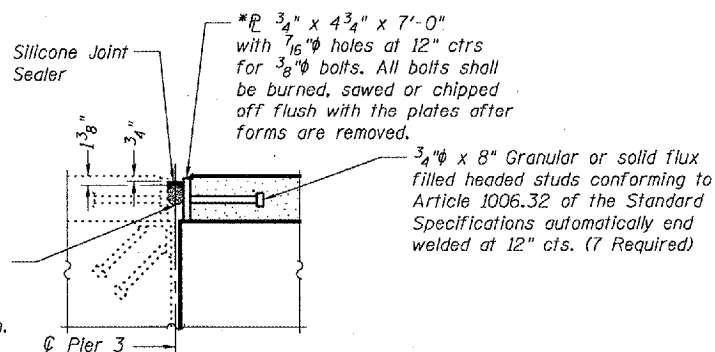
**SECTION**

**SHEAR KEY CLAMPING DETAILS AT STAGE CONST. JT.**

See Special Provisions for Stage Construction of Precast Prestressed Concrete Deck Beams. Cost included with "Precast Prestressed Concrete Deck Beams". For Stage Construction Details see roadway plans.

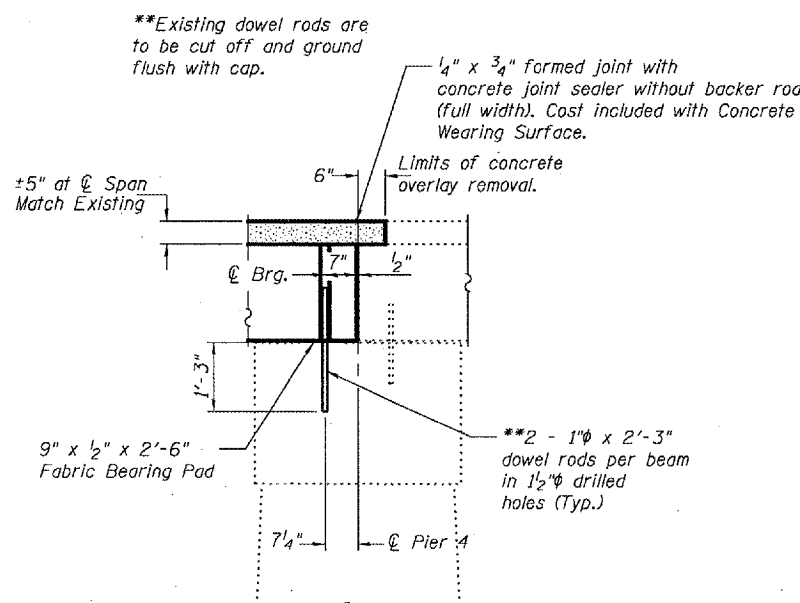


**CLAMPING PLATE**

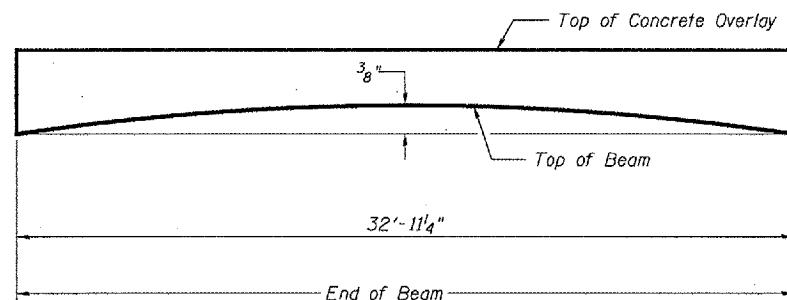


**ENLARGED DETAIL B**

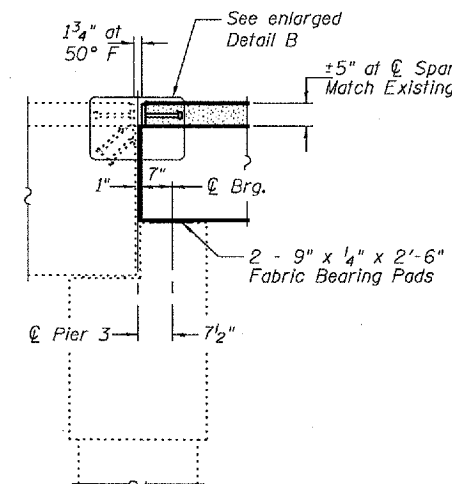
Cost of plate and studs is included with Concrete Wearing Surface. Seal space between existing and new plates with silicone sealant suitable for Structural Steel. Cost of silicone sealant is included with Concrete Wearing Surface.



**TYPICAL SECTION PIER 4**



**ANTICIPATED INITIAL CAMBER DIAGRAM**



**TYPICAL SECTION AT PIER 3**

**BILL OF MATERIAL**

Bar	No.	Size	Length	Shape
a(E)	68	#5	4'-6"	—
b(E)	8	#5	32'-9"	—
Concrete Removal		Cu. Yd.	0.5	
Concrete Wearing Surface		Sq. Yd.	26	
Reinforcement Bars, Epoxy Coated		Lbs.	590	

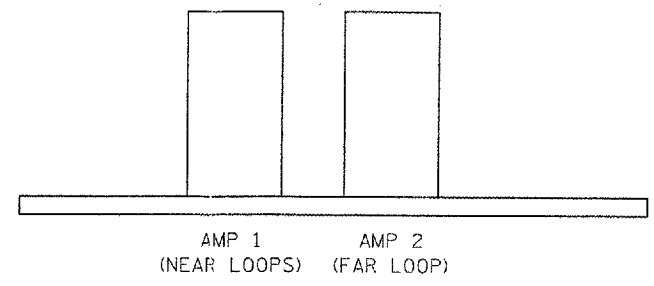
Reinforcement bars designated (E) shall be epoxy coated.

**PLAN AND ELEVATION**  
**IL 101**  
**SCHUYLER COUNTY**  
**SN 085-0016**

DESIGNED	V.H.V.
CHECKED	A.T.H.
DRAWN	Drew Christopher
CHECKED	V.H.V. A.T.H.

January 13, 2006  
EXAMINED *John A. Morris*  
ENGINEER OF STRUCTURAL SERVICES  
PASSED *Ralph E. Anderson*  
ENGINEER OF BRIDGES AND STRUCTURES

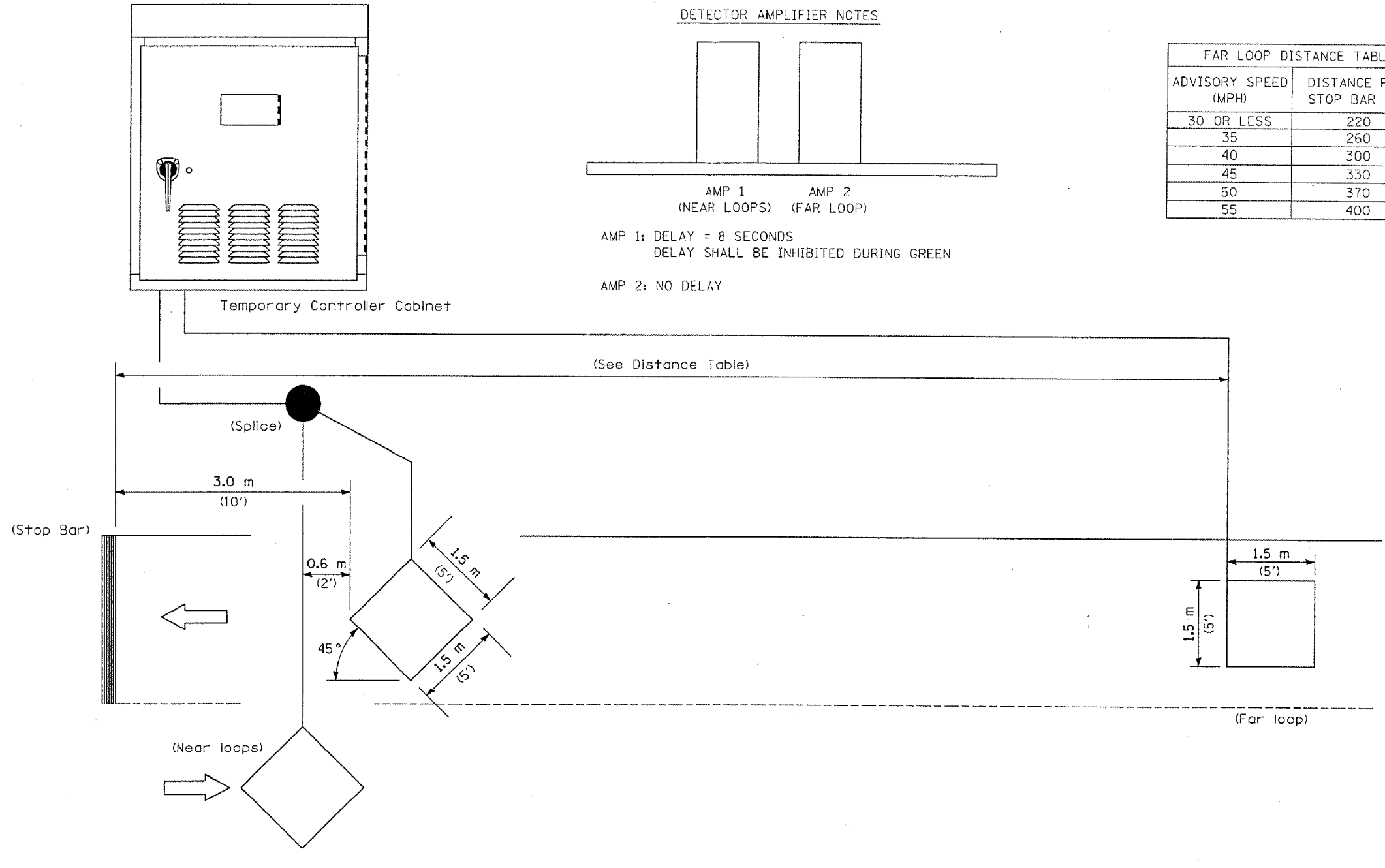
**DETECTOR AMPLIFIER NOTES**



AMP 1: DELAY = 8 SECONDS  
 DELAY SHALL BE INHIBITED DURING GREEN

AMP 2: NO DELAY

ADVISORY SPEED (MPH)	DISTANCE FROM STOP BAR (FT.)
30 OR LESS	220
35	260
40	300
45	330
50	370
55	400



NOTE: All loops centered in lane.

**INDUCTION LOOP DETECTOR**

REVISIONS		ILLINOIS DEPARTMENT OF TRANSPORTATION TEMPORARY BRIDGE TRAFFIC SIGNAL LOOP PLACEMENT DETAIL SHEET
NAME	DATE	

DRAWN BY KDA  
 CHECKED BY  
 DATE

CONTRACT NO. 70494

F.A. RTE.	SECTION	COUNTY	TOTAL SHEETS	SHEET NO.
VAR.	*	**	18	1

\* D5 CRACK & JOINT SEAL 2006-3  
\*\* CLARK/COLES/CUMBERLAND

D-95-016-06

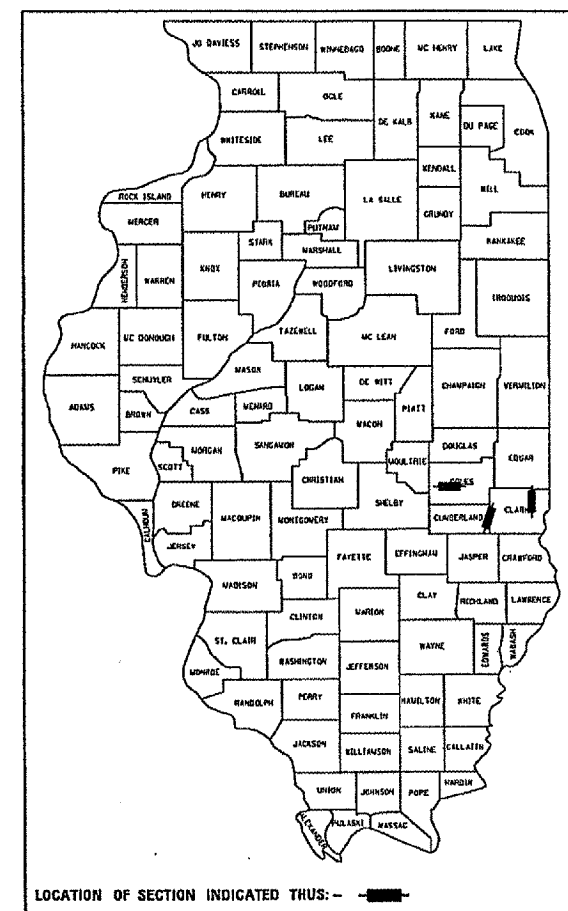
STATE OF ILLINOIS  
DEPARTMENT OF TRANSPORTATION  
DIVISION OF HIGHWAYS

**PROPOSED  
HIGHWAY PLANS**

**ROUTE VARIOUS  
SECTION D5 CRACK & JOINT SEAL 2006-3  
CLARK /COLES /CUMBERLAND COUNTIES**

C-95-016-06

ROUT & SEAL CRACKS



LOCATION OF SECTION INDICATED THIS: - [black box] -

FOR UNDERGROUND UTILITY  
LOCATIONS CALL  
TOLL FREE J.U.L.I.E. TELEPHONE NO.  
1-800-892-0123

SEE SHEETS 3 - 6 FOR LOCATION MAPS

**DESIGN DESIGNATION**  
N/A

STATE OF ILLINOIS  
DEPARTMENT OF TRANSPORTATION  
DIVISION OF HIGHWAYS

SUBMITTED 09083 2005

*[Signature]*  
DEPUTY DIRECTOR OF HIGHWAYS, REGION THREE ENGINEER

February 3, 2006  
*[Signature]*  
ENGINEER OF DESIGN AND ENVIRONMENT

February 3, 2006  
*[Signature]*  
DIRECTOR OF HIGHWAYS, CHIEF ENGINEER

**PRINTED BY THE AUTHORITY  
OF THE STATE OF ILLINOIS**

CONTRACT NO. 70494

FOR TOTAL & NET LENGTHS, SEE SHEETS NO. 3 - 6

VARIOUS ROUTES SECTION D5 CRACK & JOINT SEAL 2006-3 CLARK/COLES/CUMBERLAND COUNTIES

PROJECT ENGINEER: TIM BRANDENBURG (217)465-4181

SQUAD LEADER: MICHAEL LEROY

DESIGNER: DANA HENNESSY

PLOT DATE = 12/2/2005  
FILE NAME = c:\projects\70494\1806\1806\1806coverstheet.dgn  
PLOT SCALE = 1/8"=1'-0"  
USER NAME = phillipsj

F.A. RTE.	SECTION	COUNTY	TOTAL SHEETS	SHEET NO.
VAR.	*	**	18	2
STA.		TO STA.		
FED. ROAD DIST. NO.		ILLINOIS FED. AID PROJECT		

\* D5 CRACK & JOINT SEAL 2006-3  
 \*\* CLARK/COLES/CUMBERLAND

## INDEX OF SHEETS

1	COVER SHEET
2	INDEX OF SHEETS/HIGHWAY STANDARDS
3-6	LOCATION MAPS
7	GENERAL NOTES
8	SUMMARY OF QUANTITIES
9	SCHEDULE OF QUANTITIES
10-14	TYPICAL CROSS SECTIONS
15	TYPICAL DETAILS FOR CRACK SEALING FOR BITUMINOUS PAVEMENT
16-18	TYPICAL APPLICATIONS OF PAVEMENT MARKINGS AND MARKERS

## HIGHWAY STANDARDS

001006	DECIMAL OF AN INCH AND OF A FOOT
701306-01	LANE CLOSURE, 2L, 2W, SLOW MOVING OPERATIONS - DAY ONLY, FOR SPEEDS ≥ 45 MPH
701311-02	LANE CLOSURE, 2L, 2W, MOVING OPERATIONS - DAY ONLY
701501-03	URBAN LANE CLOSURE, 2L, 2W, UNDIVIDED
702001-05	TRAFFIC CONTROL DEVICES
780001-01	TYPICAL PAVEMENT MARKINGS

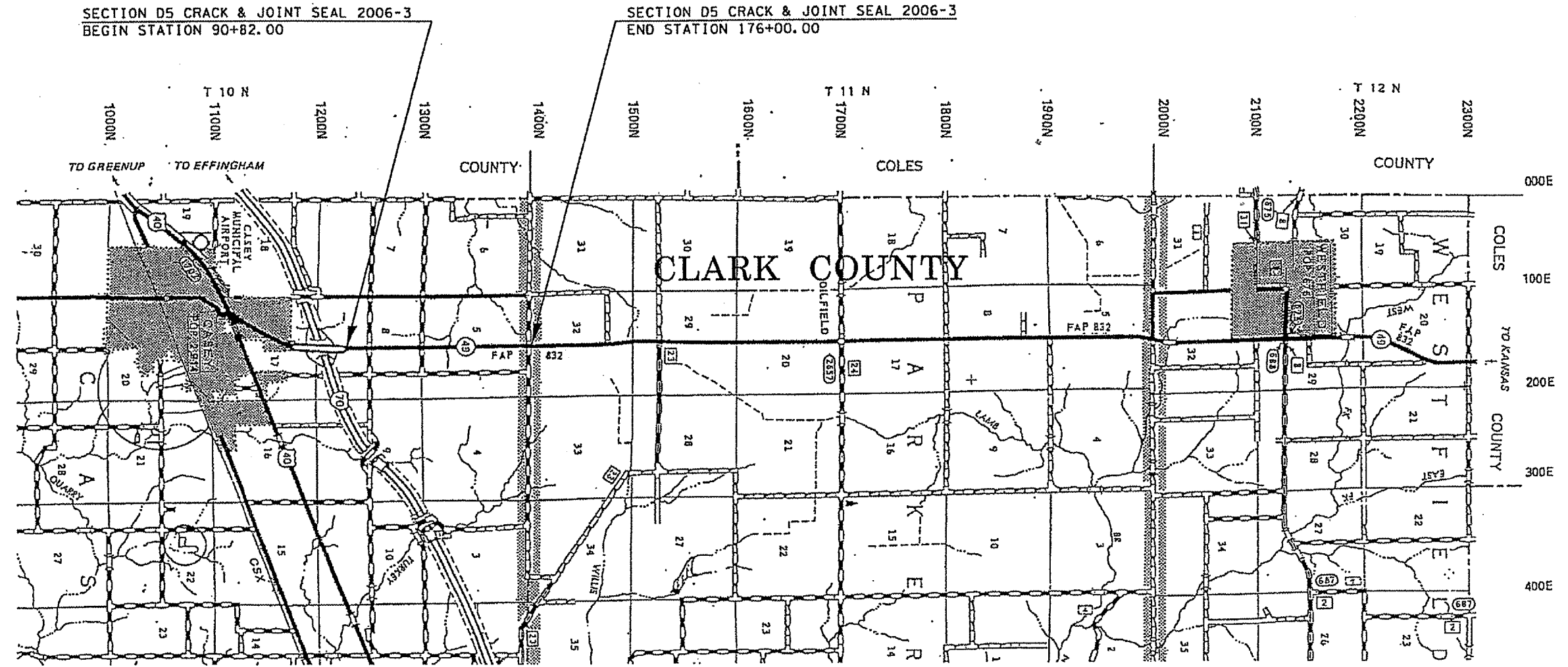
CONTRACT NO. 70494

F.A. RTE.	SECTION	COUNTY	TOTAL SHEETS	SHEET NO.
	*	**	18	3
STAL.	TO STA.			
FED. ROAD DIST. NO.	ILLINOIS	FED. AID PROJECT		

\* D5 CRACK & JOINT SEAL 2006-3  
 \*\* CLARK/COLES/CUMBERLAND

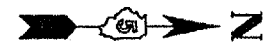
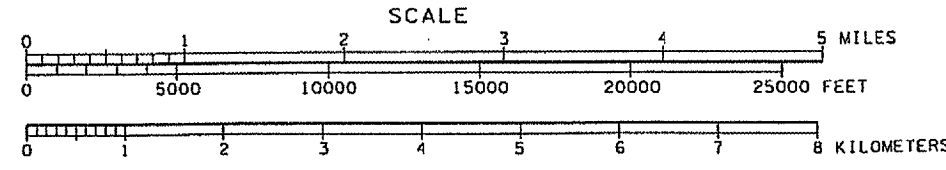
**LOCATION MAP #1**  
**IL ROUTE 49 FROM TR 197/TR 199 (PARKER TWP/CASEY TWP LINE)**  
**TO NORTH OF F.A.I. 70 INTERCHANGE RAMPS**

**CLARK COUNTY / RURAL 2-LANE**



SECTION D5 CRACK & JOINT SEAL 2006-3  
 BEGIN STATION 90+82.00

SECTION D5 CRACK & JOINT SEAL 2006-3  
 END STATION 176+00.00



TOTAL & NET LENGTH OF SECTION = 8,518.00 FEET = 1.613 MILES

PLOT DATE: 12/27/05  
 PLOT SCALE: 1" = 1000'  
 PLOT SHEET: 18 OF 18  
 PLOT NUMBER: 70494-3

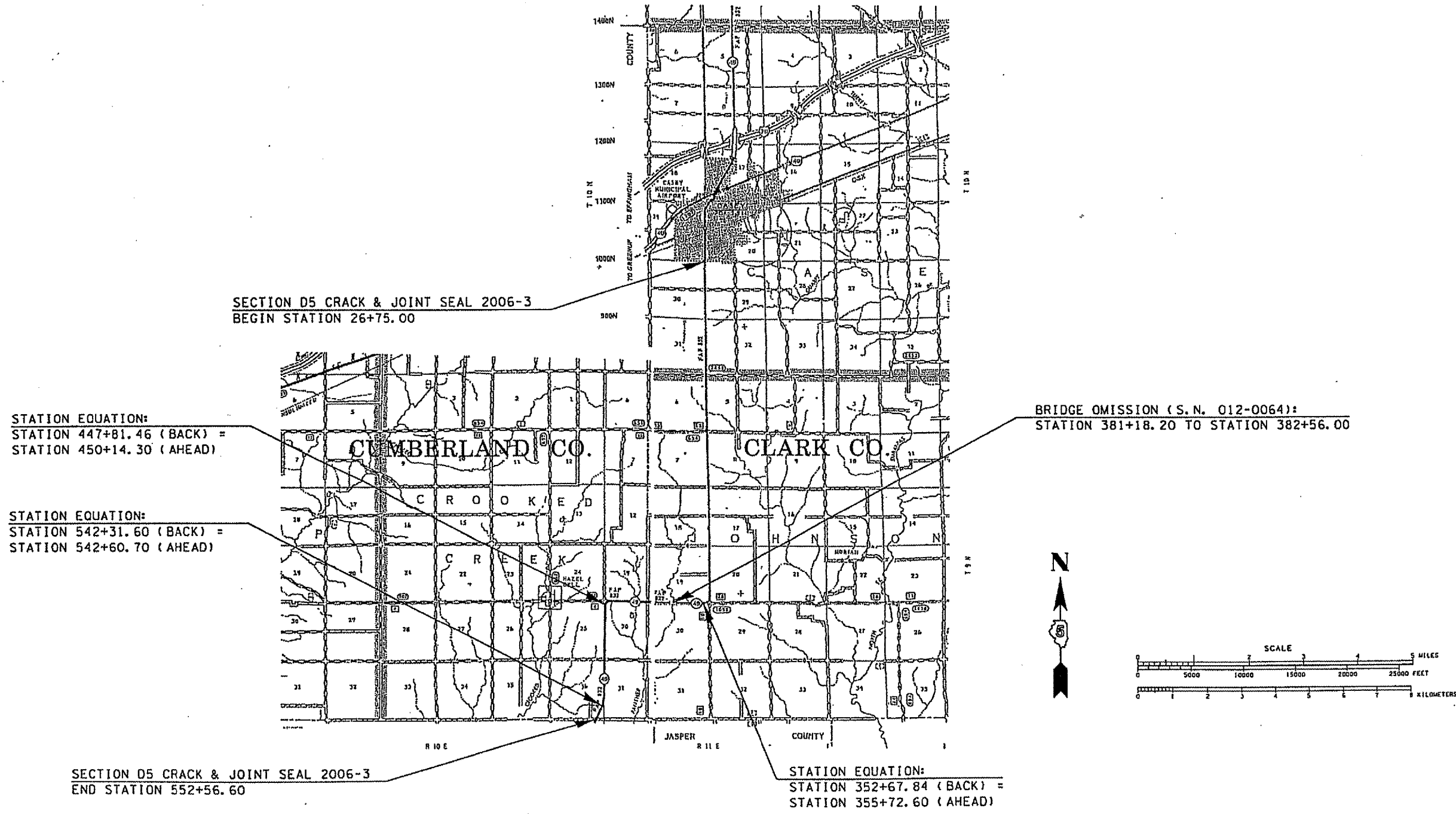
F.A. R.T.E.	SECTION	COUNTY	TOTAL SHEETS	SHEET NO.
VAR.	*	**	18	4
STA.	TO STA.			
FED. ROAD DIST. NO.	ILLINOIS	FED. AID PROJECT		

\* D5 CRACK & JOINT SEAL 2006-3  
 \*\* CLARK/COLES/CUMBERLAND

## LOCATION MAP #2

### IL ROUTE 49 FROM SOUTH CORP. LIMITS OF CASEY (TYLER AVE.) TO JASPER COUNTY LINE

### CLARK & CUMBERLAND COUNTIES / RURAL 2-LANE



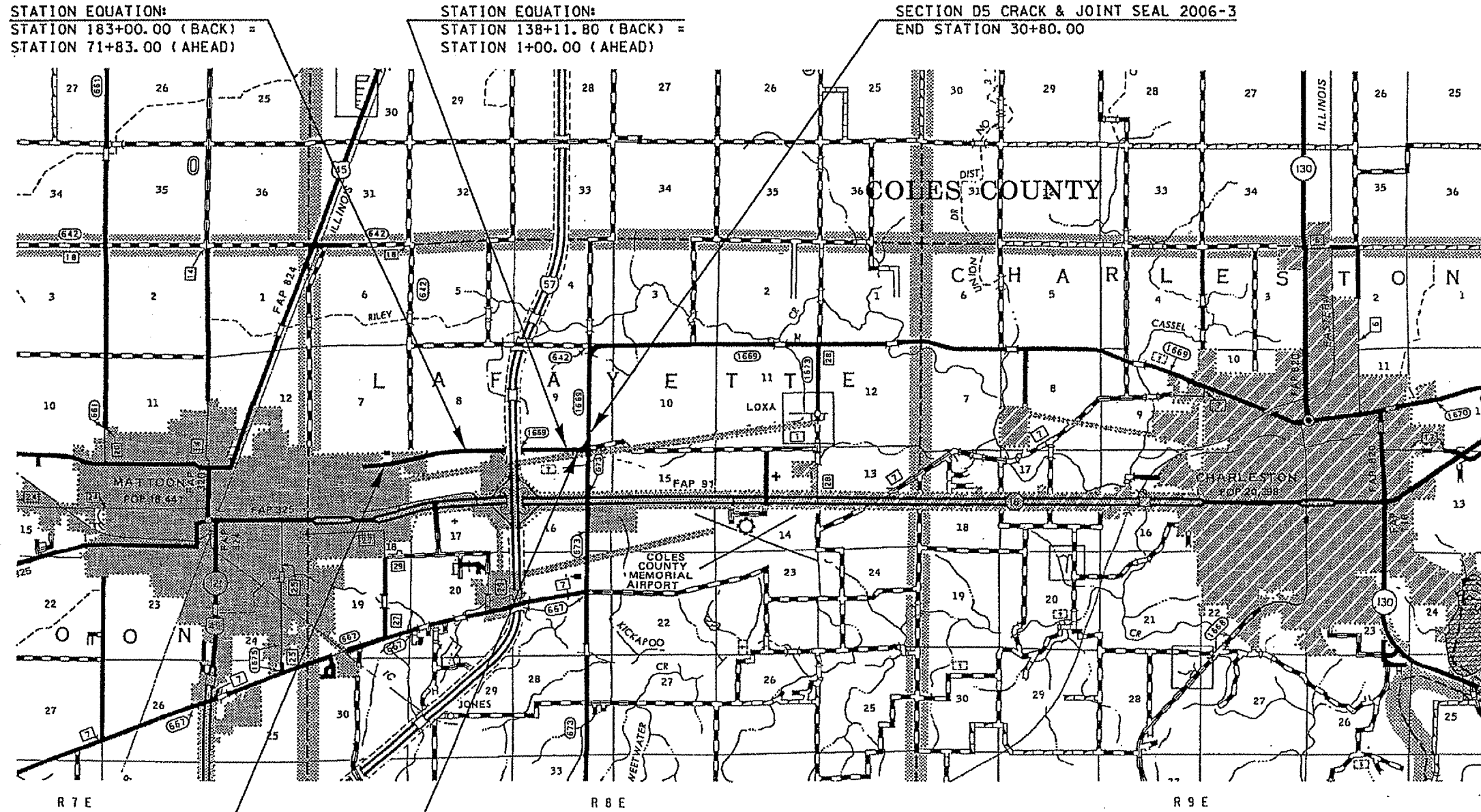
TOTAL LENGTH OF SECTION = 52,014.90 FEET = 9.851 MILES  
 NET LENGTH OF SECTION = 51,877.10 FEET = 9.825 MILES

PLOT DATE = 12/27/05  
 PLOT SCALE = 1" = 1000'  
 USER NAME = phillips

F.A. RTE.	SECTION	COUNTY	TOTAL SHEETS	SHEET NO.
	*	**	18	5
STA.		TO STA.		
FED. ROAD DIST. NO.	ILLINOIS FED. AID PROJECT			
* D5 CRACK & JOINT SEAL 2006-3				
** CLARK/COLES/CUMBERLAND				

**LOCATION MAP #3**  
**FAU 7666 (IL ROUTE 316) FROM LOGAN STREET**  
**IN MATTOON TO LERNA ROAD**

**COLES COUNTY / URBAN 2-LANE**



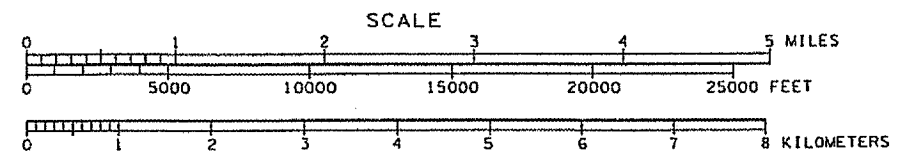
**STATION EQUATION:**  
 STATION 183+00.00 (BACK) =  
 STATION 71+83.00 (AHEAD)

**STATION EQUATION:**  
 STATION 138+11.80 (BACK) =  
 STATION 1+00.00 (AHEAD)

**SECTION D5 CRACK & JOINT SEAL 2006-3**  
 END STATION 30+80.00

**SECTION D5 CRACK & JOINT SEAL 2006-3**  
 BEGIN STATION 136+40.50

**STATION EQUATION:**  
 STATION 7+03.10 (BACK) =  
 STATION 26+00.00 (AHEAD)



**TOTAL & NET LENGTH OF SECTION = 12,371.40 FEET = 2.343 MILES**

CONTRACT NO. 70494				
F.A. RTE.	SECTION	COUNTY	TOTAL SHEETS	SHEET NO.
VAR.	*	**	18	6
STA.	TO STA.			
FED. ROAD DIST. MI.	ILLINOIS	FED. AID PROJECT		
* D5 CRACK & JOINT SEAL 2006-3				
** CLARK/COLES/CLIMBERLAND				

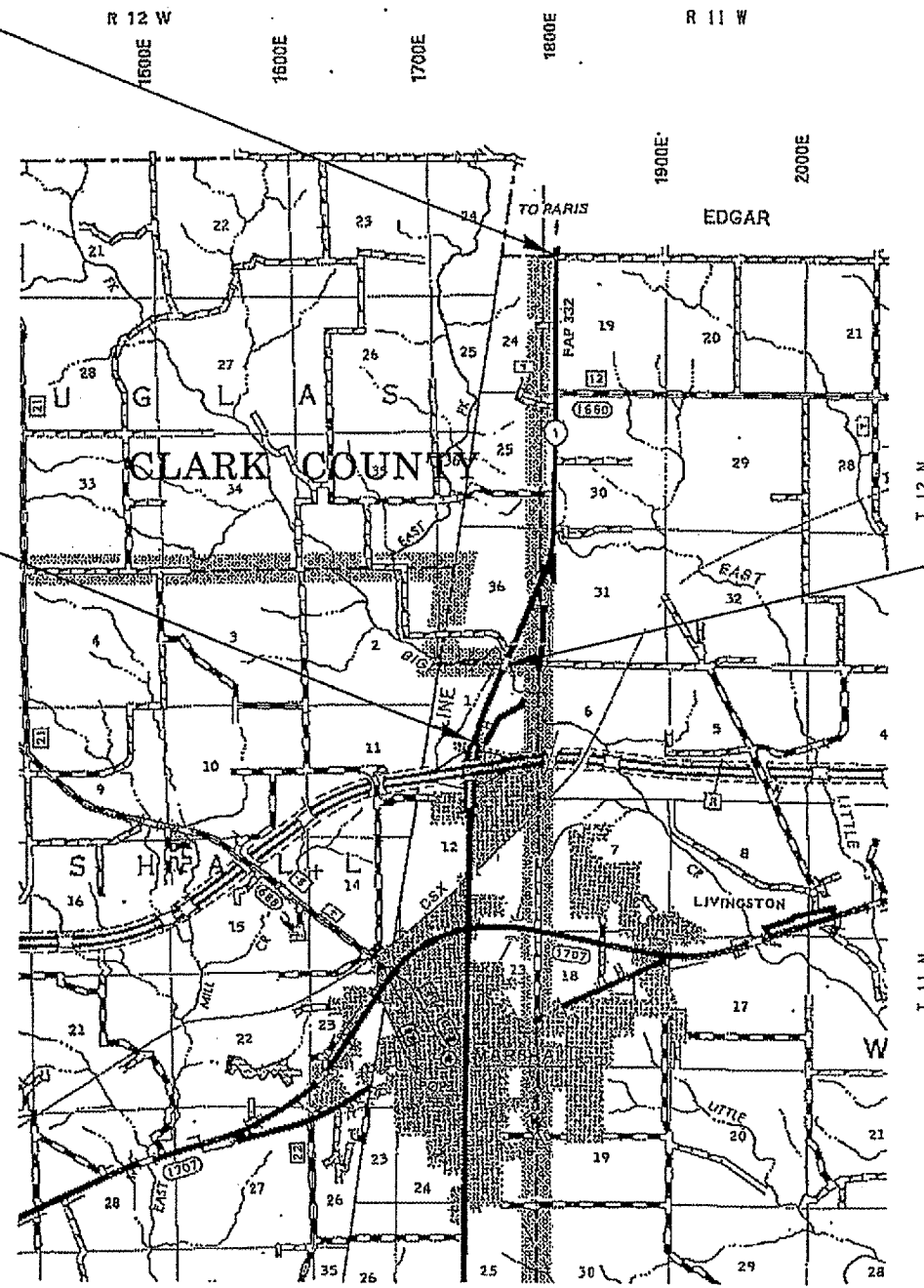
**LOCATION MAP #4**  
**IL ROUTE 1 FROM EDGAR COUNTY LINE TO**  
**NORTH OF I-70 RAMPS IN MARSHALL**

**CLARK COUNTY / RURAL 2-LANE**

SECTION D5 CRACK & JOINT SEAL 2006-3  
 END STATION 212+85.00

SECTION D5 CRACK & JOINT SEAL 2006-3  
 BEGIN STATION 18+39.37

BRIDGE OMISSION (S.N. 012-0013):  
 STATION 51+43.30 TO STATION 53+43.40



TOTAL LENGTH OF SECTION = 19,445.63 FEET = 3.683 MILES  
 NET LENGTH OF SECTION = 19,245.53 FEET = 3.645 MILES

PLT DATE: 1/12/2006  
 FILE NAME: I:\PROJECTS\70494\70494.dwg  
 PLT SCALE: 1/8"=1'-0"  
 USER NAME: phillips



F.A. RTE.	SECTION	COUNTY	TOTAL SHEET NO.
VAR.	#	##	18 7

STA.	TO STA.
FED. ROAD DIST. NO.	ILLINOIS FED. AID PROJECT

■ DS CRACK & JOINT SEAL 2006-3  
 ■ CLARK/COLES/CUMBERLAND

## GENERAL NOTES

G. N. - 100

ENGLISH UNITS OF MEASUREMENT SHALL GOVERN OVER AND SUPERSEDE ANY METRIC UNITS SHOWN IN THIS CONTRACT. WHERE INCLUDED, METRIC UNITS ARE FOR INFORMATION ONLY.

G. N. - 451 (SPECIAL)

CRACK ROUTING AND FILLING CONSISTS OF BOTH LONGITUDINAL AND TRANSVERSE CRACKS. AN APPLICATION RATE OF 0.40 LBS./FOOT WAS USED TO DETERMINE CRACK FILLING QUANTITIES.

### LOCATION #1

THE INTENT AT LOCATION #1 IS TO ROUT AND SEAL ALL TRANSVERSE CRACKS, THE CENTERLINE LONGITUDINAL JOINT AND MISCELLANEOUS LONGITUDINAL CRACKS BETWEEN THE WHEEL LANES FROM STATION 90+82.00 TO STATION 176+00.00.

LONGITUDINAL: 5,063.0 LBS.  
 TRANSVERSE: 252.0 LBS.

TOTAL: 5,315.0 LBS. (ESTIMATED)

### LOCATION #2

THE INTENT AT LOCATION #2 IS TO ROUT AND SEAL ALL TRANSVERSE CRACKS, THE CENTERLINE LONGITUDINAL JOINT AND MISCELLANEOUS LONGITUDINAL CRACKS BETWEEN THE WHEEL LANES FROM STATION 26+75.00 TO STATION 552+56.60.

LONGITUDINAL: 21,120.0 LBS.  
 TRANSVERSE: 9,400.0 LBS.

TOTAL: 30,520.0 LBS. (ESTIMATED)

### LOCATION #3

THE INTENT AT LOCATION #3 IS TO ROUT AND SEAL ALL TRANSVERSE CRACKS, THE CENTERLINE LONGITUDINAL JOINT AND MISCELLANEOUS LONGITUDINAL CRACKS BETWEEN THE WHEEL LANES FROM STATION 136+40.50 TO STATION 30+80.00. CURB AND GUTTER CRACKS AND ALL CURB JOINTS ARE TO BE OMITTED.

LONGITUDINAL: 5,348.0 LBS.  
 TRANSVERSE: 4,320.0 LBS.

TOTAL: 9,668.0 LBS. (ESTIMATED)

### LOCATION #4

THE INTENT AT LOCATION #4 IS TO ROUT AND SEAL ALL TRANSVERSE CRACKS, THE CENTERLINE LONGITUDINAL JOINT AND MISCELLANEOUS LONGITUDINAL CRACKS BETWEEN THE WHEEL LANES FROM STATION 18+39.37 TO STATION 212+85.00. THE INTENT IS TO START AT THE SOUTH END OF THIS LOCATION AND WORK NORTH UNTIL EITHER THE LOCATION IS COMPLETED OR THE REMAINDER OF THE TOTAL CONTRACT QUANTITY IS EXHAUSTED.

LONGITUDINAL: 8,037.0 LBS.  
 TRANSVERSE: 1,164.0 LBS.

TOTAL: 9,201.0 LBS. (ESTIMATED)

NOTE: ANY CHANGES TO THE INTENT OF ROUTING AND SEALING AT THE ABOVE LISTED LOCATIONS SHALL BE APPROVED BY THE ENGINEER.

## SUMMARY OF QUANTITIES

P.A. RTE.	SECTION	COUNTY	TOTAL SHEETS	SHEET NO.
VAR.	**	**	18	8
STA.		TO STA.		
FED. ROAD DIST. NO.		ILLINOIS FED. AID PROJECT		
* D5 CRACK & JOINT SEAL 2006-3 ** CLARK/COLES/CUMBERLAND				

LOCATION OF WORK: VARIOUS ROUTES  
 D5 CRACK AND JOINT SEAL 2006-3  
 VARIOUS COUNTIES

CONSTRUCTION TYPE CODE:

RURAL 100% STATE ROUT & SEAL CLARK CO. FO00	RURAL 100% STATE ROUT & SEAL CUMBERLAND CO. FO00	URBAN 100% STATE ROUT & SEAL COLES CO. FO00
---	--	---

<u>CODE NO.</u>	<u>ITEM</u>	<u>UNIT</u>	<u>TOTAL QUANTITY</u>	<u>QUANTITY</u>	<u>QUANTITY</u>	<u>QUANTITY</u>
45100100	CRACK ROUTING (PAVEMENT)	FOOT	136,761.0	90,845.0	21,745.0	24,171.0
45100200	CRACK FILLING	POUND	54,704.0	36,338.0	8,698.0	9,668.0
67100100	MOBILIZATION	L SUM	1.0	0.7	0.1	0.2
70100460	TRAFFIC CONTROL AND PROTECTION, STANDARD 701306	L SUM	1.0	0.8	0.2	0.0
70102620	TRAFFIC CONTROL AND PROTECTION, STANDARD 701501	L SUM	1.0	0.0	0.0	1.0
• 78001110	PAINT PAVEMENT MARKING - LINE 4"	FOOT	23,003.0	16,214.0	3,696.0	3,093.0
•	SPECIALTY ITEM					

# SCHEDULE OF QUANTITIES

CONTRACT NO. 70494				
F.A. RYE	SECTION	COUNTY	TOTAL SHEETS	SHEET NO.
VAR.	**	**	18	9
STA.		TO STA.		
FED. ROAD DIST. NO.		ILLINOIS FED. AID PROJECT		
* D5 CRACK & JOINT SEAL 2006-3 ** CLARK/COLES/CUMBERLAND				

LOCATION OF WORK: VARIOUS ROUTES  
D5 CRACK AND JOINT SEAL 2006-3  
VARIOUS COUNTIES

IL RTE. 49	IL RTE. 49	IL RTE. 49	IL RTE. 316	IL RTE. 1
CLARK CO. RURAL 100% STATE STA. 90+82.00 TO STA. 176+00.00 LOCATION #1	CLARK CO. RURAL 100% STATE STA. 26+75.00 TO STA. 402+46.30 LOCATION #2	CUMBERLAND CO. RURAL 100% STATE STA. 402+46.30 TO STA. 552+56.60 LOCATION #2	COLES CO. URBAN 100% STATE STA. 136+40.50 TO STA. 30+80.00 LOCATION #3	CLARK CO. RURAL 100% STATE STA. 18+39.37 TO STA. 212+85.00 LOCATION #4

LOCATION#

CODE NO	ITEM	UNIT	TOTAL QUANTITY	QUANTITY	QUANTITY	QUANTITY	QUANTITY	QUANTITY
45100100	CRACK ROUTING (PAVEMENT)	FOOT	136,761.0	13,288.0	54,555.0	21,745.0	24,171.0	23,002.0
45100200	CRACK FILLING	POUND	54,704.0	5,315.0	21,822.0	8,698.0	9,668.0	9,201.0
67100100	MOBILIZATION	L SUM	1.0	0.1	0.4	0.1	0.2	0.2
70100460	TRAFFIC CONTROL AND PROTECTION, STANDARD 701306	L SUM	1.0	0.1	0.5	0.2	0.0	0.2
70102620	TRAFFIC CONTROL AND PROTECTION, STANDARD 701501	L SUM	1.0	0.0	0.0	0.0	1.0	0.0
78001110	PAINT PAVEMENT MARKING - LINE 4"	FOOT	23,003.0	2,130.0	9,273.0	3,696.0	3,093.0	4,811.0
• SPECIALTY ITEM								

F.A. RTE.	SECTION	COUNTY	TOTAL SHEETS	NO.
VAR.	**	**	18	10

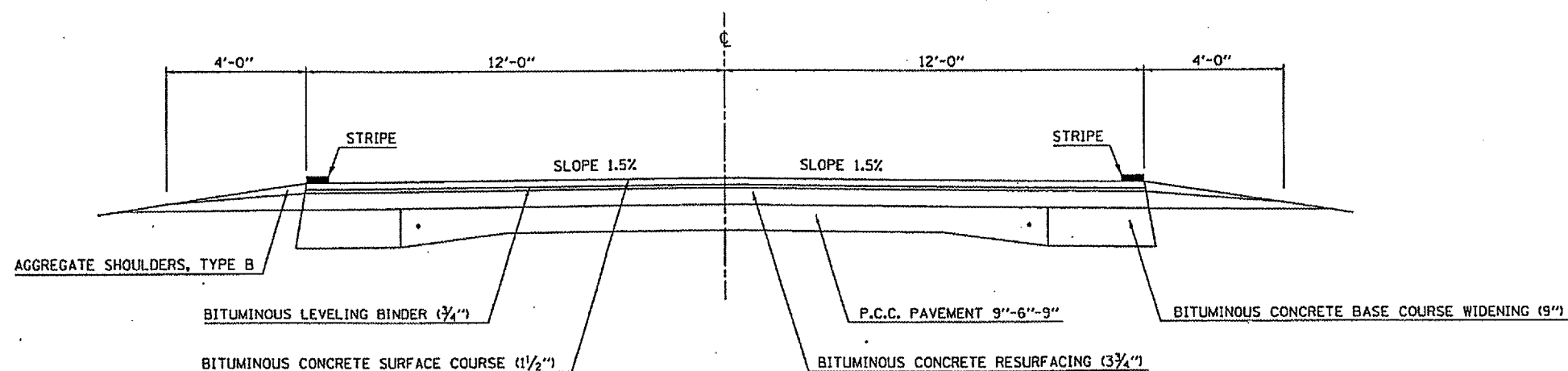
STA.	TO STA.
FED. ROAD DIST. NO.	ILLINOIS FED. AID PROJECT

\*\* DS CRACK & JOINT SEAL 2006-3  
\*\* CLARK/COLES/CUMBERLAND

# TYPICAL CROSS SECTION

LOCATION #1  
IL RTE. 49 (TR 197/TR 199 TO F. A. I. 70)

STATION TO STATION  
90+82.00 TO 176+00.00



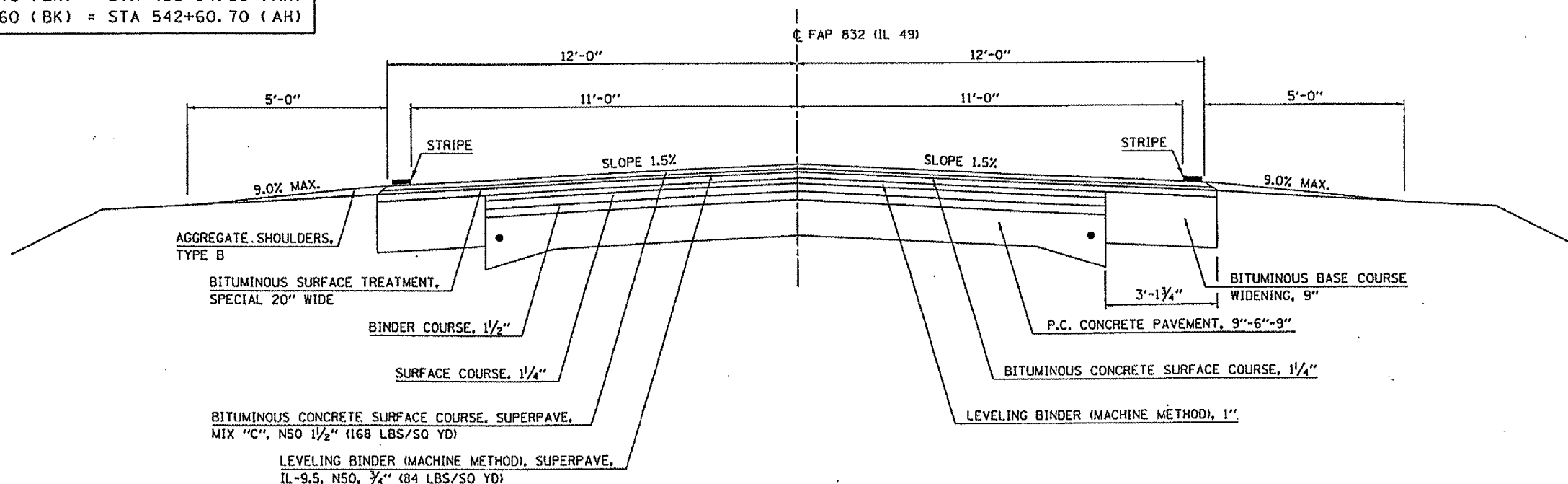
# TYPICAL CROSS SECTION

LOCATION #2  
IL RTE. 49 (SOUTH CORP. LIMITS OF CASEY TO JASPER CO. LINE)

STATION TO STATION  
26+75.00 TO 552+56.60

BRIDGE OMISSION (S.N. 012-0064):  
STA 381+18.20 TO STA 382+56.00

STATION EQUATIONS:  
STA 352+67.84 (BK) = STA 355+72.60 (AH)  
STA 447+81.46 (BK) = STA 450+14.30 (AH)  
STA 542+31.60 (BK) = STA 542+60.70 (AH)



F.A. RTE.	SECTION	COUNTY	TOTAL SHEETS	SHEET NO.
VAR.	*	**	16	11
STA.	TO STA.			
FED. ROAD DIST. NO.	ILLINOIS	FED. AID PROJECT		

\* DS CRACK & JOINT SEAL 2006-3  
 \*\* CLARK/COLES/CUMBERLAND

### 3A TYPICAL CROSS SECTION

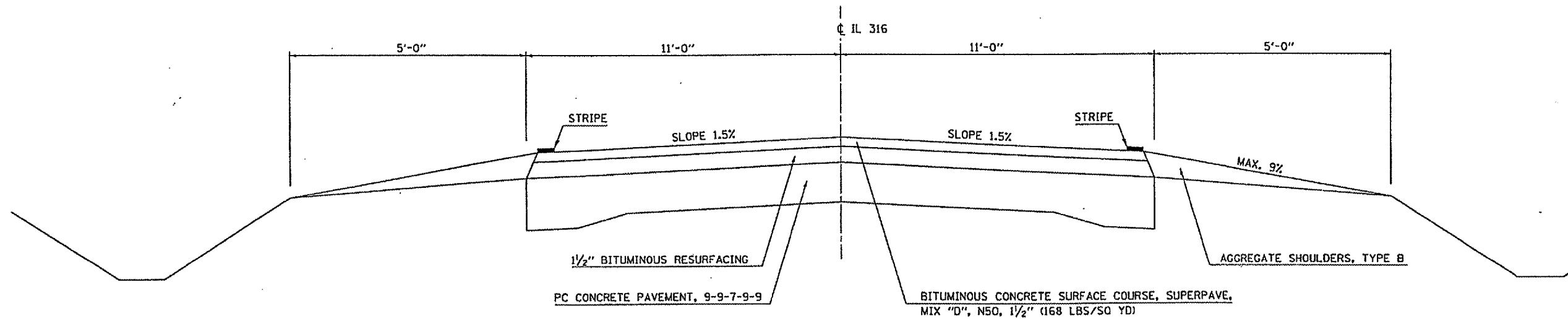
LOCATION #3

FAU 7666 (IL RTE. 316) (LOGAN ST. IN MATTOON TO LERNA ROAD)

STATION TO STATION  
 136+40.50 6+28.00 (3B)

STATION EQUATIONS:

STA 183+00.00 (BK) = STA 71+83.00 (AH)  
 STA 138+11.80 (BK) = STA 1+00.00 (AH)



### 3B TYPICAL CROSS SECTION

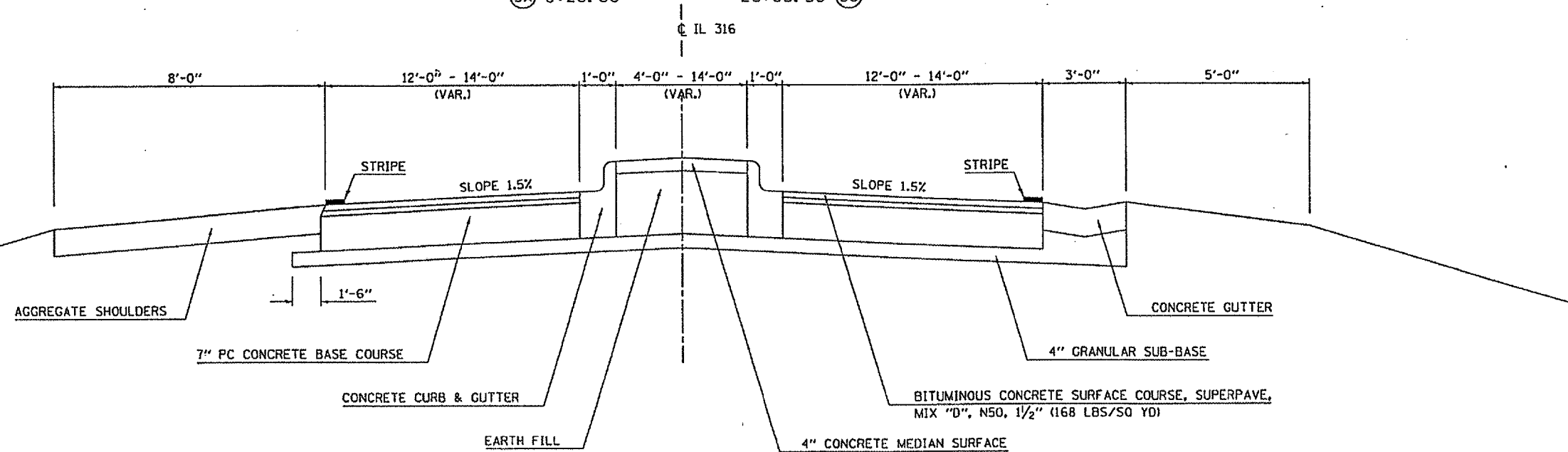
LOCATION #3

FAU 7666 (IL RTE. 316) (LOGAN ST. IN MATTOON TO LERNA ROAD)

STATION TO STATION  
 (3A) 6+28.00 26+83.30 (3C)

STATION EQUATION:

STA 7+03.10 (BK) = STA 26+00.00 (AH)



F.A. RTE.	SECTION	COUNTY	TOTAL SHEETS	SHEET NO.
VAR.	"	"	18	12

STA.	TO STA.
FED. ROAD DIST. NO.	ILLINOIS FED. AID PROJECT

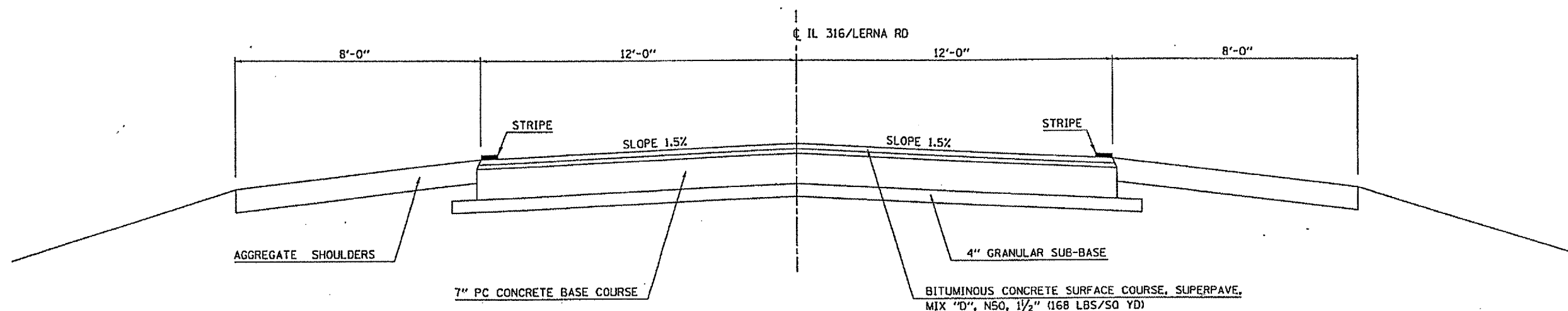
\* D5 CRACK & JOINT SEAL 2006-3  
 \*\* CLARK/COLES/CUMBERLAND

### 3C TYPICAL CROSS SECTION

LOCATION #3

FAU 7666 (IL RTE. 316) (LOGAN ST. IN MATTOON TO LERNA ROAD)

STATION TO STATION  
 3B 26+83.30 TO 30+80.00



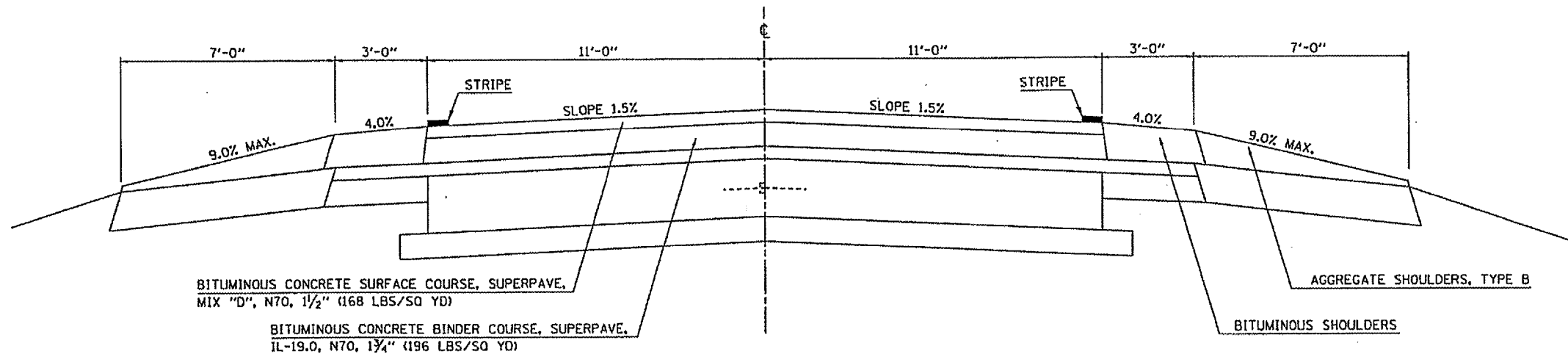
### 4A TYPICAL CROSS SECTION

LOCATION #4

IL RTE. 1 (EDGAR/CLARK CO. LINE TO NORTH OF I-70 INTERCHANGE IN MARSHALL)

STATION TO STATION  
 18+39.37 TO 51+43.30  
 53+43.40 TO 78+23.91 4B  
 97+26.89 TO 105+39.54 4C

BRIDGE OMISSION (S.N. 012-0013):  
 STA 51+43.30 TO STA 53+43.40



PLT DATE 12/22/05  
 FILE SCALE 1/4" = 1'-0"  
 USER NAME penltpy

F.A. RTE.	SECTION	COUNTY	TOTAL SHEETS	SHEET NO.
	*	**	18	13

STA. TO STA.  
FED. ROAD DIST. NO. ILLINOIS FED. AID PROJECT

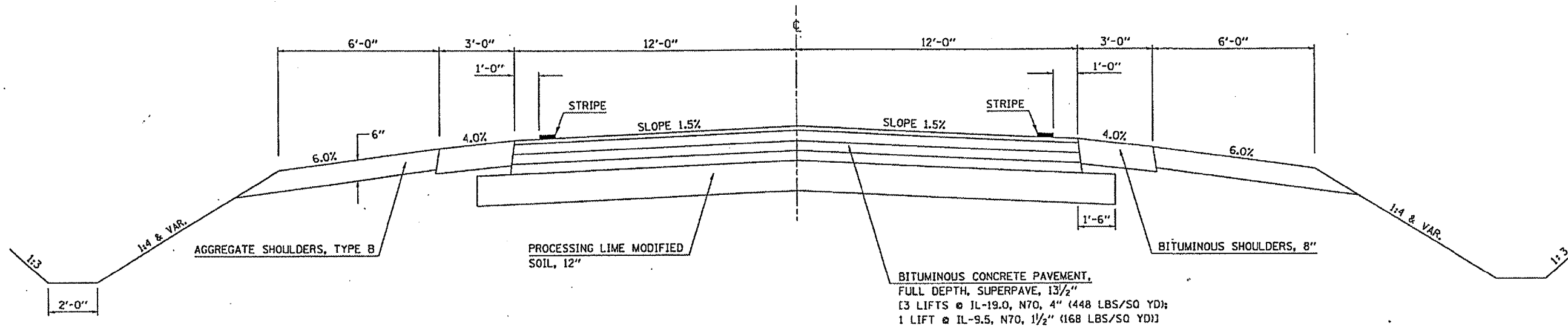
\* DS CRACK & JOINT SEAL 2006-3  
\*\* CLARK/COLES/CUMBERLAND

### 4B TYPICAL CROSS SECTION

LOCATION #4

IL RTE. 1 (EDGAR/CLARK CO. LINE TO NORTH OF I-70 INTERCHANGE IN MARSHALL)

STATION TO STATION  
4A 78+23.91 TO 97+26.89 4A

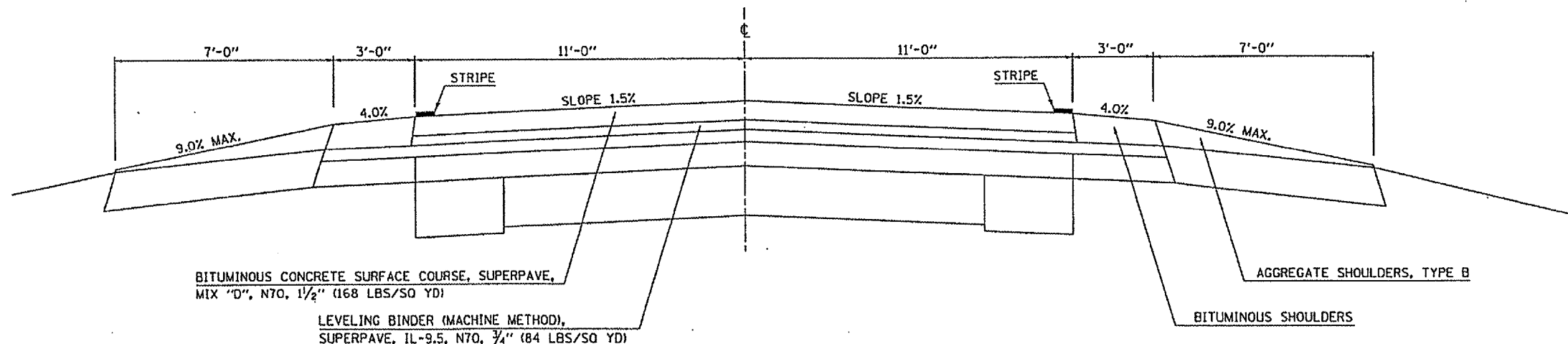


### 4C TYPICAL CROSS SECTION

LOCATION #4

IL RTE. 1 (EDGAR/CLARK CO. LINE TO NORTH OF I-70 INTERCHANGE IN MARSHALL)

STATION TO STATION  
4A 105+39.54 TO 165+87.46 4D  
4D 170+59.93 TO 212+85.00 4D



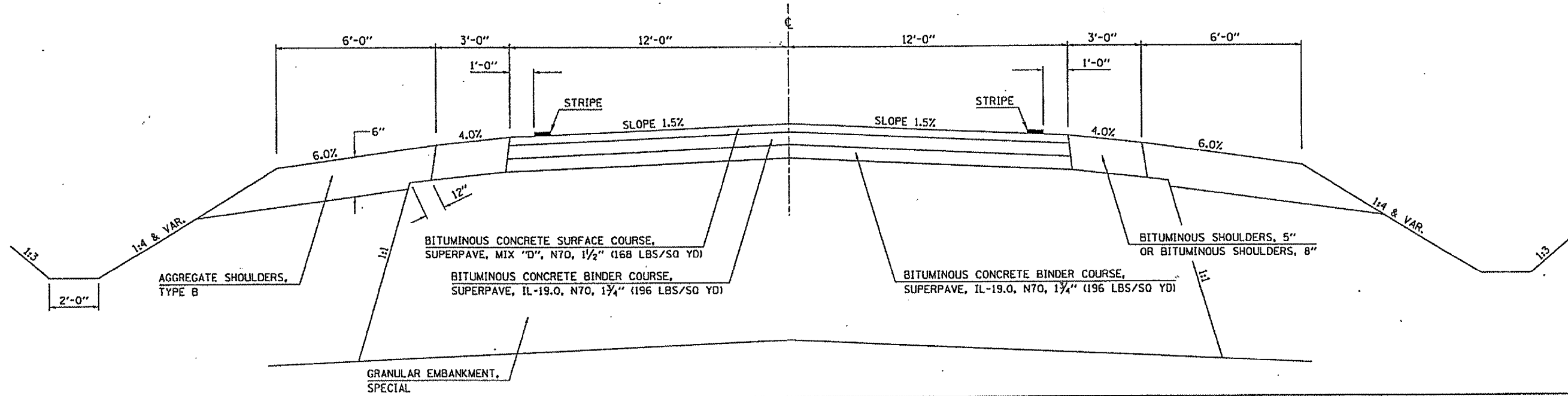
PLOT DATE = 12/27/2005  
FILE NAME = s:\projects\70494\70494.dwg  
USER NAME = jphillips

# (4D) TYPICAL CROSS SECTION

LOCATION #4  
 IL RTE. 1 (EDGAR/CLARK CO. LINE TO NORTH OF I-70 INTERCHANGE IN MARSHALL)

STATION TO STATION  
 (4C) 165+87.46 TO 170+59.93 (4C)

CONTRACT NO. 70494				
F.A. RTE.	SECTION	COUNTY	TOTAL SHEETS	SHEET NO.
VAR.	*	**	18	14
STA.		TO STA.		
FED. ROAD DIST. NO.		ILLINOIS FED. AID PROJECT		
* DS CRACK & JOINT SEAL 2006-3				
** CLARK/COLES/CUMBERLAND				



PLOT DATE \* 12/22/2005  
 FILE NAME \* c:\projects\1081866\1081866.dwg  
 PLOT SCALE \* 1/8"=1'-0"  
 USER NAME \* philip

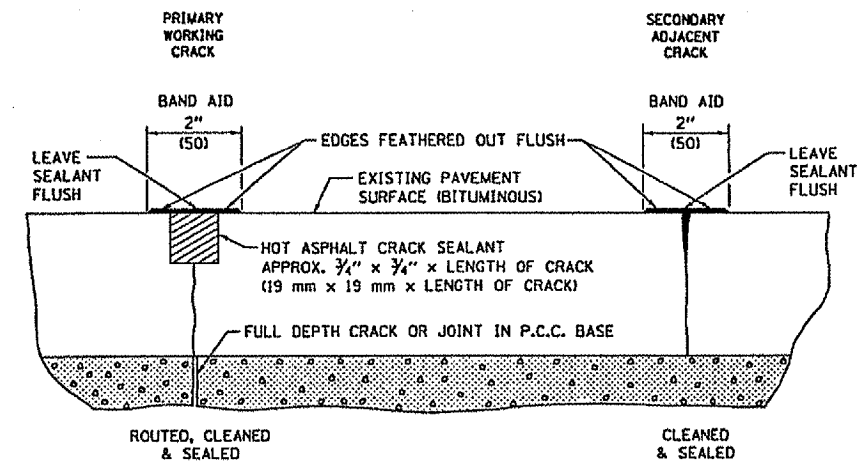


F.A. RTE.	SECTION	COUNTY	TOTAL SHEETS	SHEET NO.
VAR.	■	■ ■	18	15

STA.	TO STA.
FED. RDW DIST. NO.	ILLINOIS FED. AID PROJECT

■ DS CRACK & JOINT SEAL 2006-3  
 ■ ■ CLARK/COLES/CUMBERLAND

### TYPICAL DETAILS FOR CRACK SEALING FOR BITUMINOUS PAVEMENT



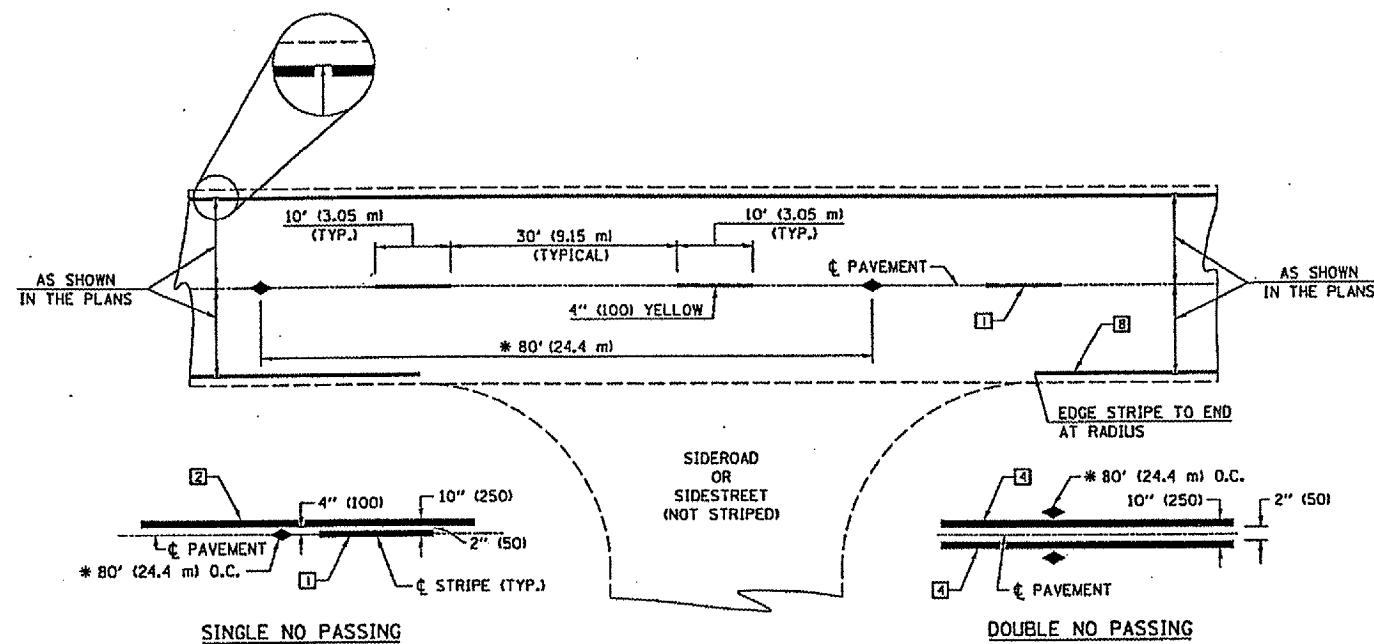
	NAME	DATE	REVISIONS	
			NAME	DATE
DESIGNED	SPRG.	04/90		
CHECKED	J.H.M.	05/90	K.A.G.	04/04
CADD NO.	X-2.05			

ALL DIMENSIONS ARE IN INCHES (MILLIMETERS) UNLESS OTHERWISE SHOWN.

F.A. RTE.	SECTION	COUNTY	TOTAL SHEETS	SHEET NO.
VAR.	*	**	18	16
STA.	TO STA.			
FED. ROAD DIST. NO.	ILLINOIS FED. AID PROJECT			

\* DS CRACK & JOINT SEAL 2006-3  
 \*\* CLARK/COLES/CUMBERLAND

### TYPICAL APPLICATIONS OF PAVEMENT MARKINGS AND MARKERS



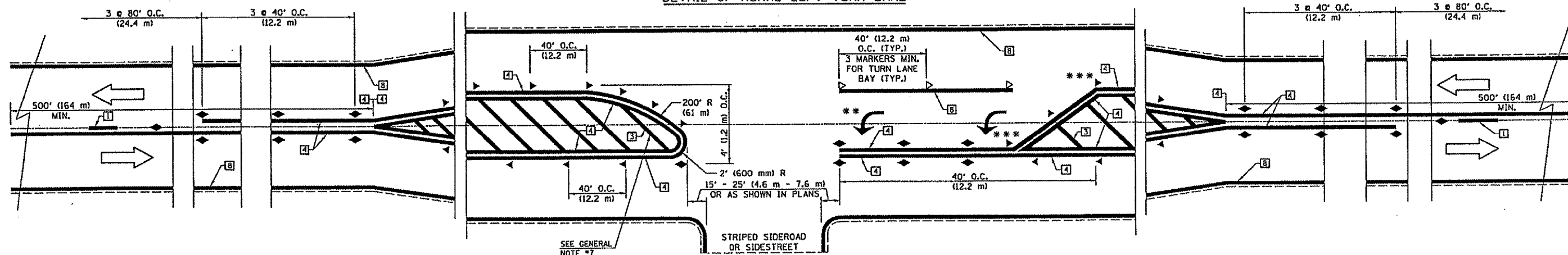
#### TYPICAL PAVEMENT MARKING LEGEND

- 1 4" (100) SKIP-DASH (YELLOW)
- 2 4" (100) SOLID (YELLOW)
- 3 12" (300) DIAGONAL (YELLOW)
- 4 4" (100) DOUBLE YELLOW (NARROW)
- 5 RESERVED
- 6 RESERVED
- 7 4" (100) SKIP-DASH (WHITE)
- 8 4" (100) SOLID (WHITE)
- 9 12" (300) DIAGONAL (WHITE)
- 10 6" (150) CROSS WALK (WHITE)
- 11 24" (600) STOP BAR (WHITE)
- 12 8" (200) SOLID (WHITE)
- 13 4" (100) LANE LINE EXTENSIONS (WHITE)
- 14 4" (100) PARKING WHITE

#### TYPICAL PAVEMENT MARKERS LEGEND

- ◆ TWO-WAY AMBER MARKER
- ▶ ONE-WAY AMBER MARKER
- ▷ ONE-WAY CRYSTAL MARKER

#### DETAIL OF RURAL LEFT TURN LANE



\*\*\* REDUCE SPACING IF NECESSARY TO ASSURE MARKERS AT CORNER POINTS.  
 \*\* TURN ARROWS SHALL BE PLACED AS SHOWN ON SHEET #2.

SHEET 1 OF 3

DESIGNED	NAME	DATE	REVISIONS	DATE
J.M.H.		5/85		
CHECKED	FMS	6/85	GEOMETRICS/K.A.G.	07/02
CADD NO.	F-5.25		K.A.G.	08/04

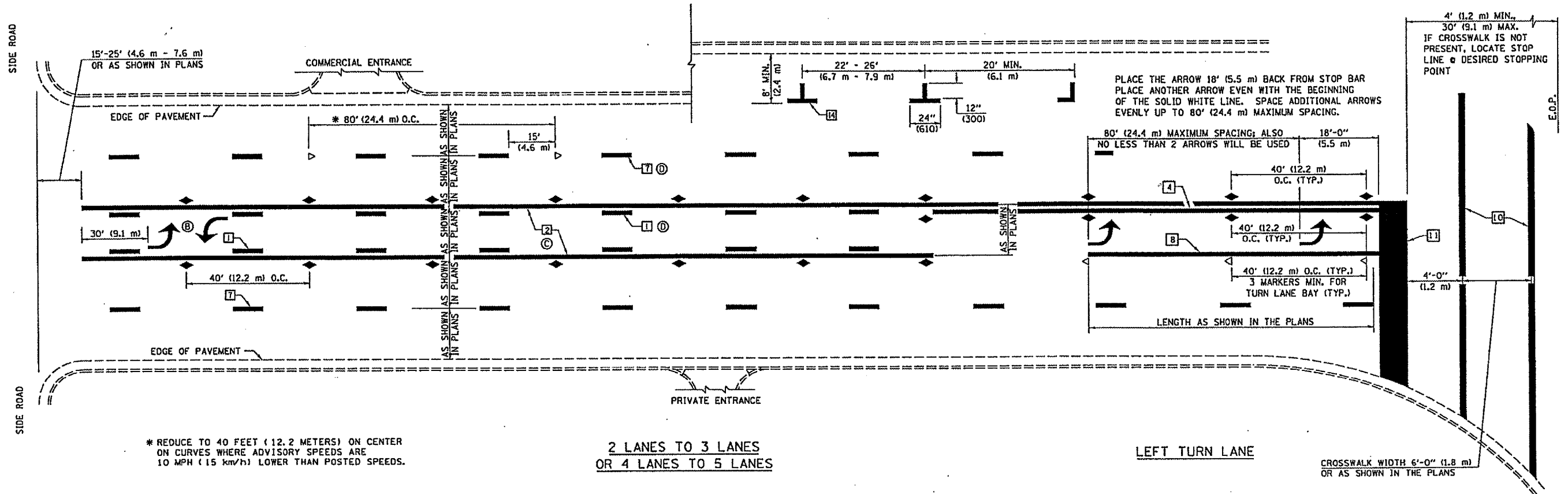
ALL DIMENSIONS ARE IN INCHES (MILLIMETERS) UNLESS OTHERWISE SHOWN.

PLOT DATE: 12/2/2005  
 FILE NAME: I:\projects\70494\70494.dwg  
 PLOT SCALE: 1/8" = 1'-0"  
 PLOT NAME: 70494.dwg

# TYPICAL APPLICATIONS OF PAVEMENT MARKINGS AND MARKERS

CONTRACT NO. 70494

F.A. RYE.	SECTION	COUNTY	TOTAL SHEETS	SHEET NO.
VAR.	*	**	18	17
STA.		TO STA.		
FED. ROAD DIST. NO.	ILLINOIS	FED. AID PROJECT		
* D5 CRACK & JOINT SEAL 2006-3				
** CLARK/COLES/CUMBERLAND				



\* REDUCE TO 40 FEET (12.2 METERS) ON CENTER ON CURVES WHERE ADVISORY SPEEDS ARE 10 MPH (15 km/h) LOWER THAN POSTED SPEEDS.

2 LANES TO 3 LANES  
OR 4 LANES TO 5 LANES

LEFT TURN LANE

CROSSWALK WIDTH 6'-0" (1.8 m)  
OR AS SHOWN IN THE PLANS

SHEET 2 OF 3

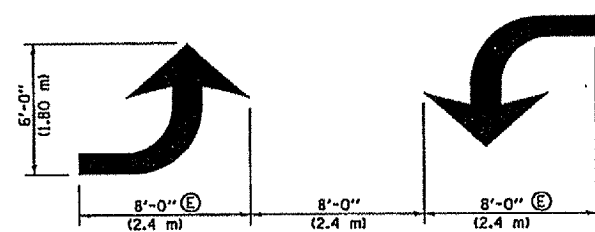
DESIGNED	NAME	DATE	REVISIONS	DATE
J.M.H.		5/05		
CHECKED	FMS	5/05	GEOMETRICS/K.A.G.	07/02
CADD NO.	F-5.25		K.A.G.	08/04

ALL DIMENSIONS ARE IN INCHES (MILLIMETERS) UNLESS OTHERWISE SHOWN.

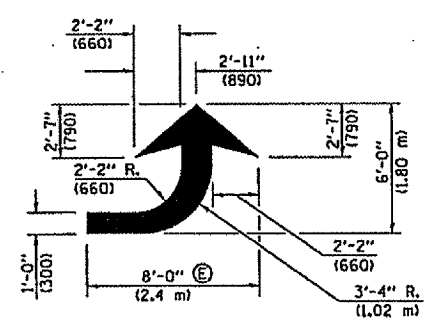
PLOT DATE = 12/2/2005  
 FILE NAME = c:\p\projects\70494\70494.dwg  
 PLOT SCALE = 1/8" = 1' IN.  
 USER NAME = philip

F.A. RTE.	SECTION	COUNTY	TOTAL SHEETS	SHEET NO.
VAR.	*	**	18	18
STA.	TO STA.			
FED. ROAD DIST. NO.	ILLINOIS FED. AID PROJECT			
* DS CRACK & JOINT SEAL 2006-3				
** CLARK/COLES/CUMBERLAND				

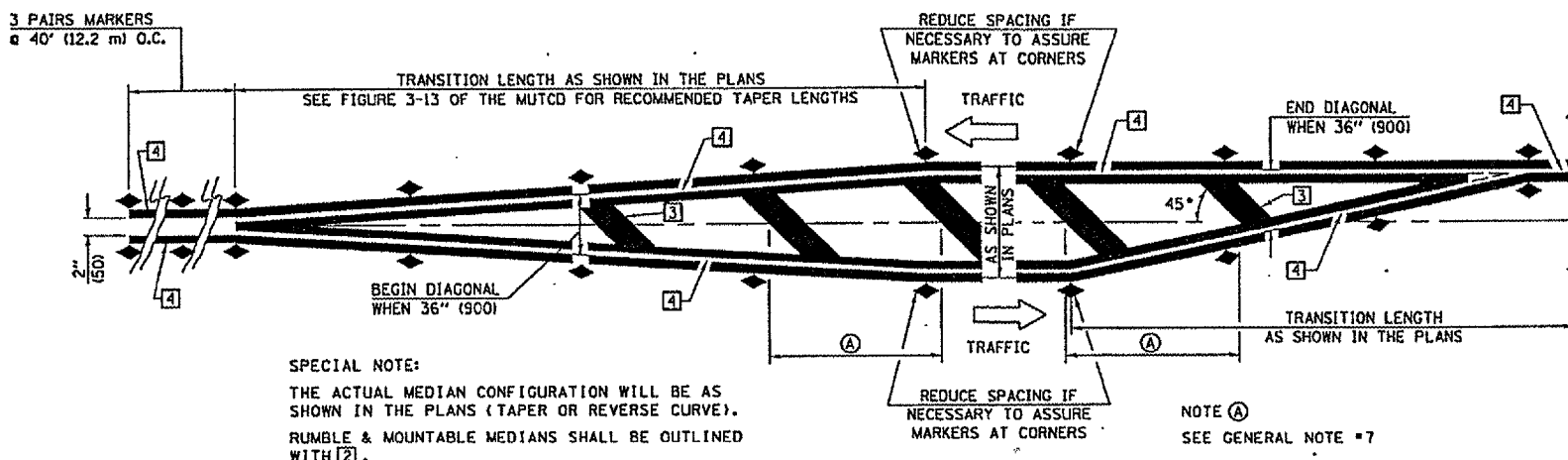
### TYPICAL APPLICATIONS OF PAVEMENT MARKINGS AND MARKERS



TYPICAL DOUBLE TURN ARROWS (WHITE)



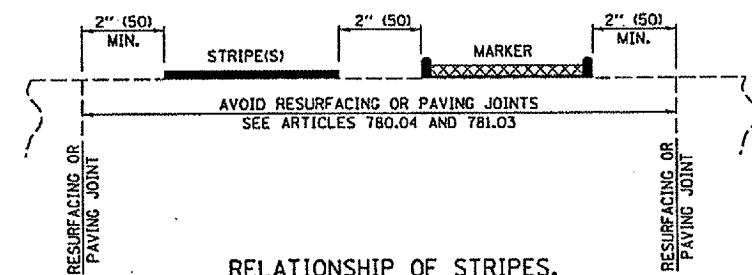
LEFT ARROW  
REVERSE FOR RIGHT ARROW  
AREA = 15.6 SQ. FT. (1.47 m<sup>2</sup>)  
(WHITE)



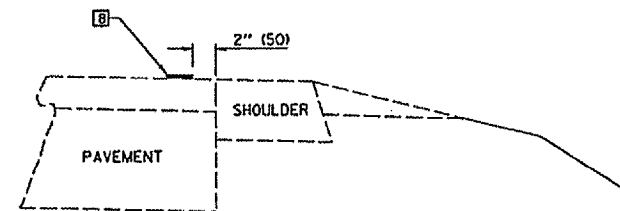
SPECIAL NOTE:  
THE ACTUAL MEDIAN CONFIGURATION WILL BE AS SHOWN IN THE PLANS (TAPER OR REVERSE CURVE).  
RUMBLE & MOUNTABLE MEDIANS SHALL BE OUTLINED WITH [2].

NOTE (A)  
SEE GENERAL NOTE #7

TYPICAL MEDIAN TRANSITIONS



RELATIONSHIP OF STRIPES, MARKERS AND JOINTS



RELATIONSHIP OF EDGE STRIPE TO SAFETY SHOULDER OR PAVED SURFACE

SPECIAL NOTES:

- (B) TURN ARROW PAIRS SHALL BE PLACED AT 250' (75 m) INTERVALS AND SHALL BE EVENLY SPACED BETWEEN BOTH ENDS OF THE BIDIRECTIONAL LEFT TURN LANE.
- (C) THE SOLID YELLOW PAVEMENT MARKINGS [2] SHOULD GENERALLY START OR END NEAR THE RADIUS POINT OF EACH STREET RETURN EXCEPT WHERE ONE OR BOTH ENDS WOULD INCLUDE STOP BARS.
- (D) THE SKIP-DASH PAVEMENT MARKINGS [1] OR [7] SHOULD BE CENTERED BETWEEN BOTH ENDS OF EACH CITY BLOCK AND SHALL BE PLACED SO THEY LINE UP ACROSS FROM EACH OTHER. SEE EXAMPLE ON SHEET 2 OF 3.
- (E) TURN ARROW SIZE DEPENDS ON THE LOCATION.  
RURAL LOCATION - LARGE ARROW SIZE  
URBAN LOCATION - SMALL ARROW SIZE

GENERAL NOTES

- 1. WHEN MEDIANS ARE PRESENT, PAVEMENT MARKINGS ARE TO BE PLACED ADJACENT TO MEDIANS.
- 2. SCALE: NONE
- 3. SOME OF THE INFORMATION INCLUDED WITH THIS DETAIL MAY NOT BE APPLICABLE TO THIS IMPROVEMENT.
- 4. PAVEMENT MARKINGS ARE TO BE EXTENDED THROUGH OMISSIONS WHEN APPLICABLE.
- 5. A STRIPING KEY IS AVAILABLE ELSEWHERE AND SHALL BE SHOWN WHERE THE QUANTITIES ARE LISTED.
- 6. FINAL PAVEMENT MARKINGS SHALL BE IN PLACE PRIOR TO PLACING ANY RAISED REFLECTIVE PAVEMENT MARKERS.
- 7. THE FOLLOWING CRITERIA SHALL BE USED FOR SELECTING THE DIAGONAL PAVEMENT MARKING SPACING,  
<30 MPH USE 15' (<50 km/h USE 4.5 m)  
30-45 MPH USE 20' (50-75 km/h USE 6.0 m)  
>45 MPH USE 30' (>75 km/h USE 9.0 m)

SHEET 3 OF 3

DESIGNED	NAME	DATE	REVISIONS
J.M.H.	J.M.H.	5/85	6/88
CHECKED	FMS	6/85	6/88
CADD NO.	F-5.25		K.A.G.

ALL DIMENSIONS ARE IN INCHES (MILLIMETERS) UNLESS OTHERWISE SHOWN.

PLOT DATE: 12/27/88  
 PLOT NAME: C:\VPROJ\DRAWING\201886 (18)1806.dwg  
 PLOT SCALE: 1/8"=1'-0"  
 USER NAME: phillips