

F.A.I. RTE.	SECTION	COUNTY	TOTAL SHEETS	SHEET NO.
55		SANGAMON	20	1

D-6 CABLE MED BAR #1

#1
= 21

STATE OF ILLINOIS
DEPARTMENT OF TRANSPORTATION
DIVISION OF HIGHWAYS

PROPOSED HIGHWAY PLANS

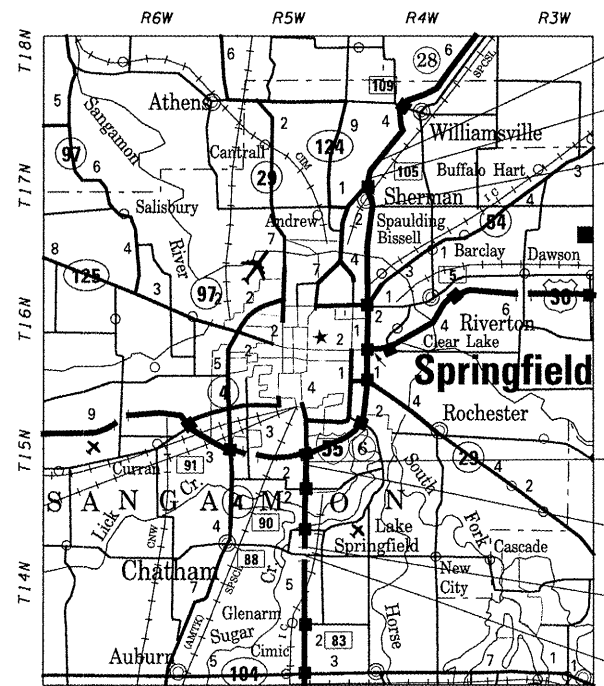
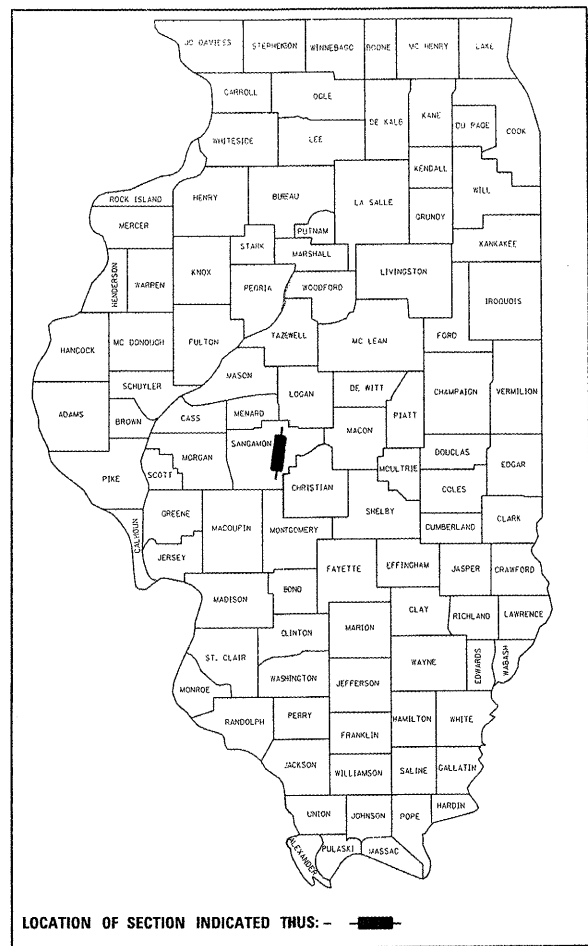
FAI 55 ROUTE (I-55)
SECTION D-6 CABLE MED BAR #1
SANGAMON COUNTY
PROJECT # ACHS-055-3(138)007
C-96-518-06

INDEX OF SHEETS

- 1 COVER SHEET
- 2 GENERAL NOTES
- 3 SUMMARY OF QUANTITIES
- 4-10 TYPICAL SECTIONS
- 11-18 PLAN SHEETS
- 19 DETAILS
- 20 MEDIAN CROSSOVER DETAILS
- 20A. CABLE MARKER DETAIL

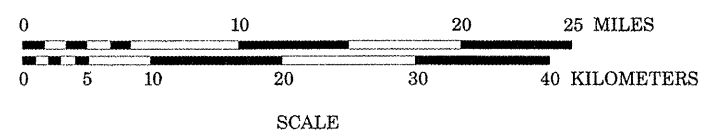
HIGHWAY STANDARDS

000001-01	701400-02
701101-01	701406-04
701106-06	702001-05

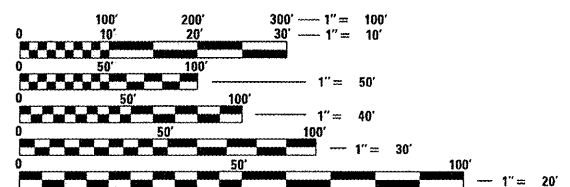


LOCATION A BEGINS
STA 259+84.00
STA EQN: STA 340+30.04 BK =
STA 340+38.65 AH
LOCATION A ENDS
STA 381+20.00

LOCATION B BEGINS
STA 14+15.00
STA EQN: STA 0+00.00 BK =
STA 167+19.74 AH
STA EQN: STA 369+27.35 BK =
STA 211+42.50 AH
LOCATION B ENDS
STA 225+50.00



GROSS LENGTH OF PROJECT = 100,700 FEET = 19.07 MILES
NET LENGTH OF PROJECT = 35,158 FEET = 6.66 MILES



FULL SIZE PLANS HAVE BEEN PREPARED USING STANDARD ENGINEERING SCALES. REDUCED SIZED PLANS WILL NOT CONFORM TO STANDARD SCALES. IN MAKING MEASUREMENTS ON REDUCED PLANS, THE ABOVE SCALES MAY BE USED.

J.U.L.I.E.
JOINT UTILITY LOCATION INFORMATION FOR EXCAVATION
1-800-892-0123

STATE OF ILLINOIS
DEPARTMENT OF TRANSPORTATION
DIVISION OF HIGHWAYS

SUBMITTED *[Signature]* 20 05
DEPUTY DIRECTOR OF HIGHWAYS, REGION ENGINEER

February 3, 20 06
[Signature]
ENGINEER OF DESIGN AND ENVIRONMENT

February 3, 20 06
[Signature]
DIRECTOR OF HIGHWAYS, CHIEF ENGINEER

PRINTED BY THE AUTHORITY
OF THE STATE OF ILLINOIS

PROJECT ENGINEER: SAL MADONIA (217) 782-4761
SQUAD LEADER: JEFFREY P. MYERS (217) 524-7940

CONTRACT NO. 72A10

SANGAMON COUNTY

SECTION D-6 CABLE MED BAR #1

Rev.