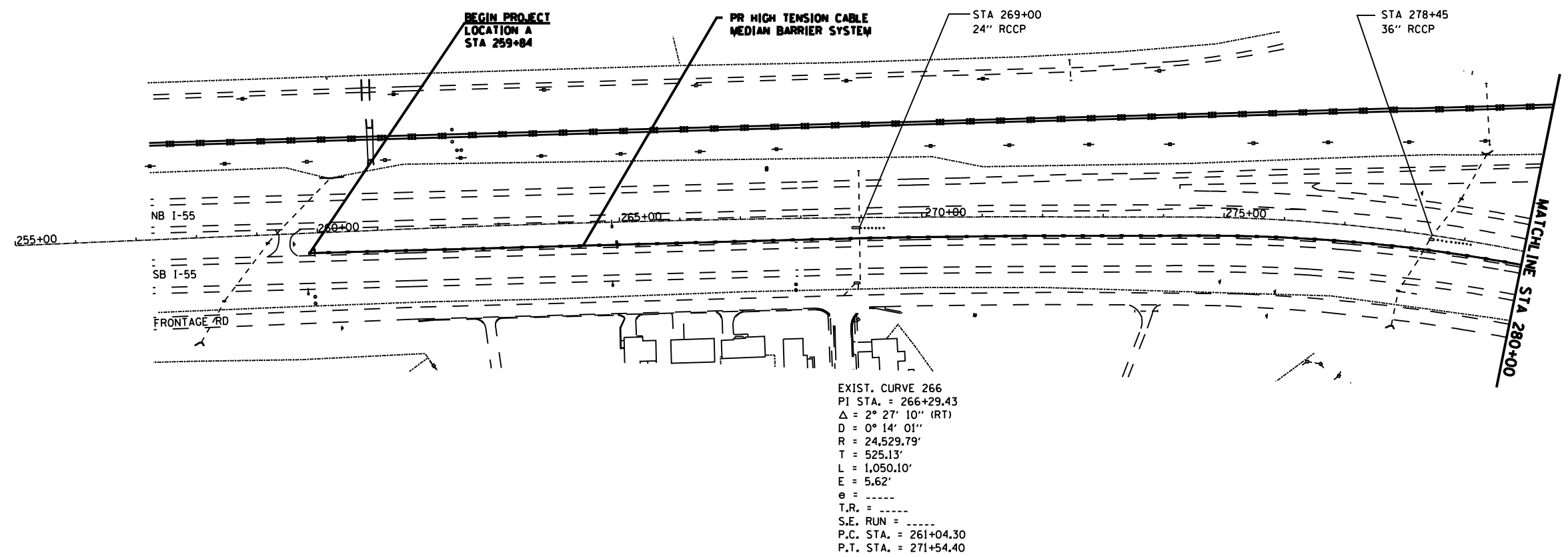
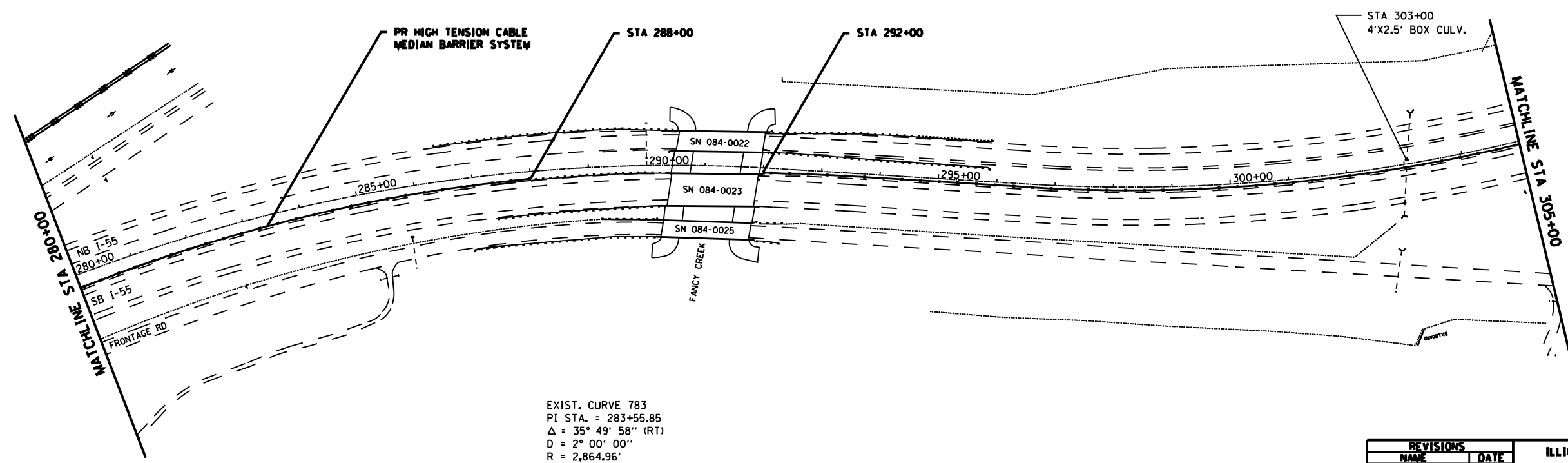


F.A.I. RTE.	SECTION	COUNTY	TOTAL SHEETS	SHEET NO.
55		SANGAMON	20	11
STA.		TO STA.		
FED. ROAD DIST. NO.	ILLINOIS	FED. AID PROJECT		
* - D-6 CABLE MED BAR #1				



EXIST. CURVE 266
 PI STA. = 266+29.43
 $\Delta = 2^\circ 27' 10''$ (RT)
 D = $0^\circ 14' 01''$
 R = 24,529.79'
 T = 525.13'
 L = 1,050.10'
 E = 5.62'
 e = -----
 T.R. = -----
 S.E. RUN = -----
 P.C. STA. = 261+04.30
 P.T. STA. = 271+54.40



EXIST. CURVE 783
 PI STA. = 283+55.85
 $\Delta = 35^\circ 49' 58''$ (RT)
 D = $2^\circ 00' 00''$
 R = 2,864.96'
 T = 926.26'
 L = 1,791.74'
 E = 146.01'
 e = -----
 T.R. = -----
 S.E. RUN = -----
 P.C. STA. = 274+29.59
 P.T. STA. = 292+21.34

REVISIONS	
NAME	DATE

ILLINOIS DEPARTMENT OF TRANSPORTATION
PLAN SHEET
LOCATION A
FAI 55 (I-55)
SECTION D-6 CABLE MED BAR #1
SANGAMON COUNTY

SCALE: VERT. _____
 HORIZ. _____

DATE _____ DRAWN BY _____
 CHECKED BY _____

PLOT DATE = 12/02/2009
 FILE NAME = c:\projects\482282\barrier\loc_a\plan11.dwg
 PLOT SCALE = 21/7847 / IN.
 USER NAME = faugh1@i