

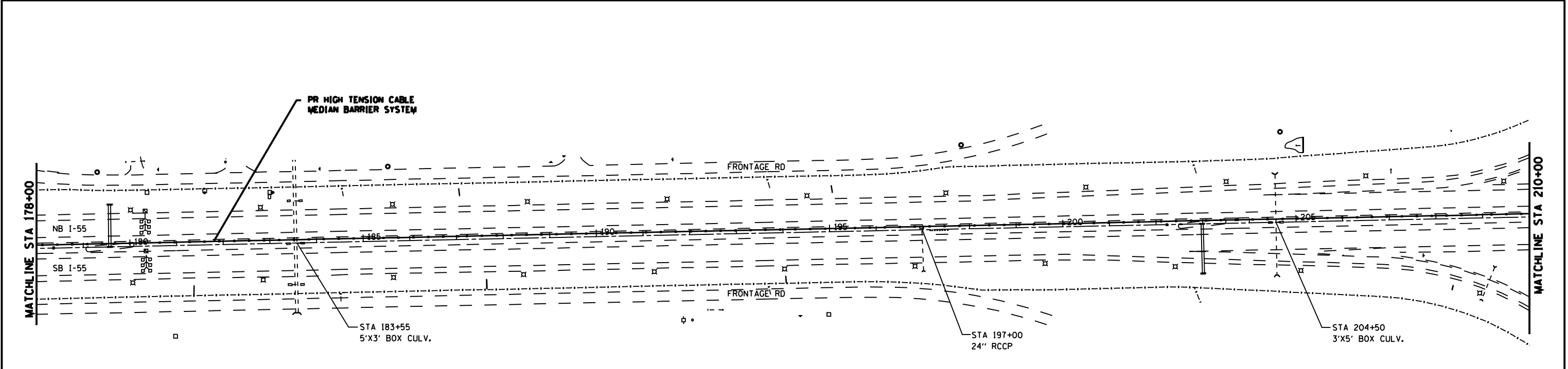
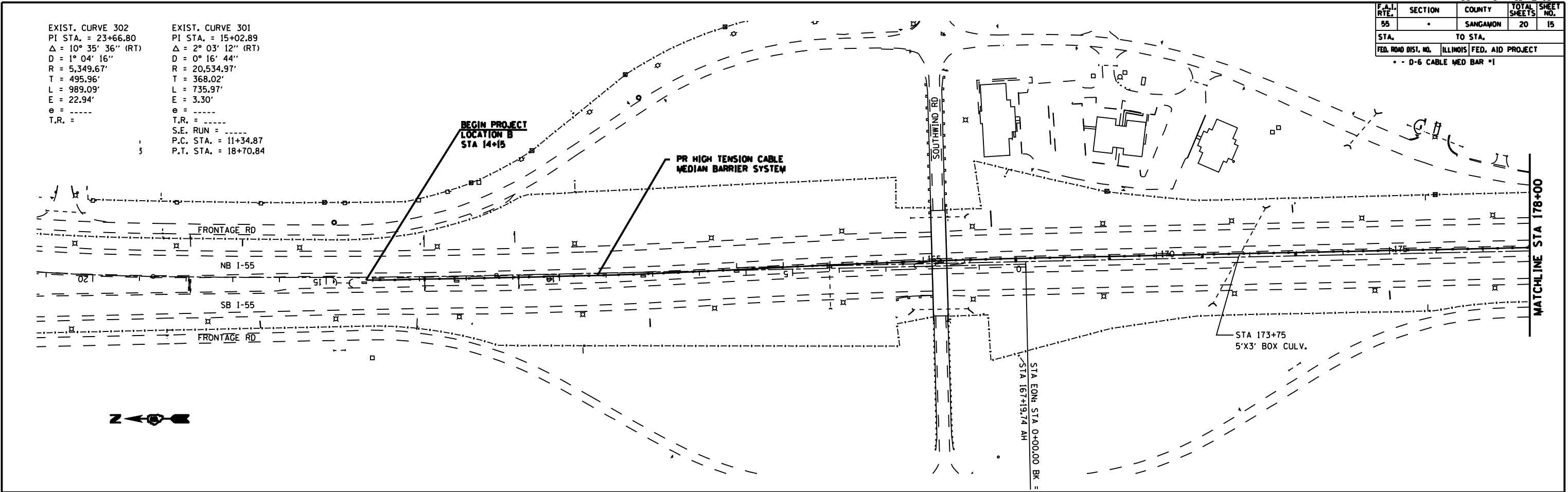
F.A.I. RTE.	SECTION	COUNTY	TOTAL SHEETS	SHEET NO.
55	.	SANGAMON	20	15
STA.		TO STA.		
FED. ROAD DIST. NO.		ILLINOIS FED. AID PROJECT		

• - D-6 CABLE MED BAR #1

EXIST. CURVE 302
 PI STA. = 23+66.80
 $\Delta = 10^\circ 35' 36''$ (RT)
 D = 1° 04' 16"
 R = 5,349.67'
 T = 495.96'
 L = 989.09'
 E = 22.94'
 e = -----
 T.R. = -----

EXIST. CURVE 301
 PI STA. = 15+02.89
 $\Delta = 2^\circ 03' 12''$ (RT)
 D = 0° 16' 44"
 R = 20,534.97'
 T = 368.02'
 L = 735.97'
 E = 3.30'
 e = -----
 T.R. = -----

1
 3
 S.E. RUN = -----
 P.C. STA. = 11+34.87
 P.T. STA. = 18+70.84



REVISIONS	
NAME	DATE

ILLINOIS DEPARTMENT OF TRANSPORTATION
PLAN SHEET
LOCATION B
 FAI 55 (I-55)
SECTION D-6 CABLE MED BAR #1
 SANGAMON COUNTY

SCALE: VERT. _____
 HORIZ. _____
 DATE _____

DRAWN BY _____
 CHECKED BY _____

PLOT DATE : 12/02/2009
 FILE NAME : c:\projects\4823282\barrier\locb\subplan183.dgn
 PLOT SCALE : 211.7847 / IN.
 USER NAME : laughlin