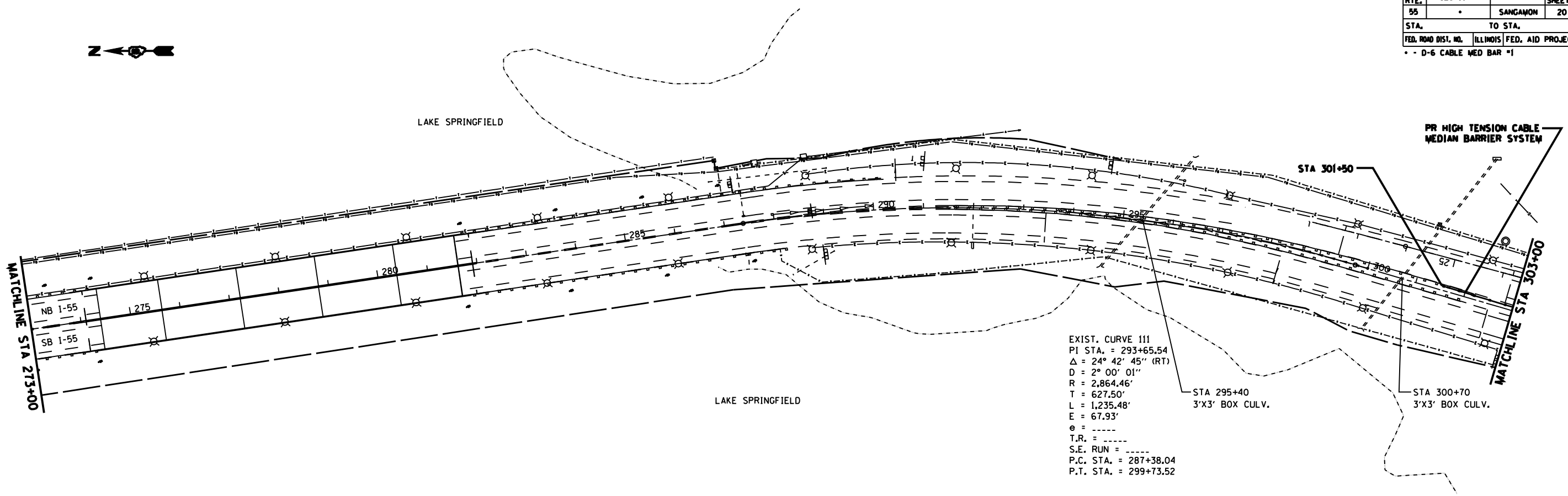
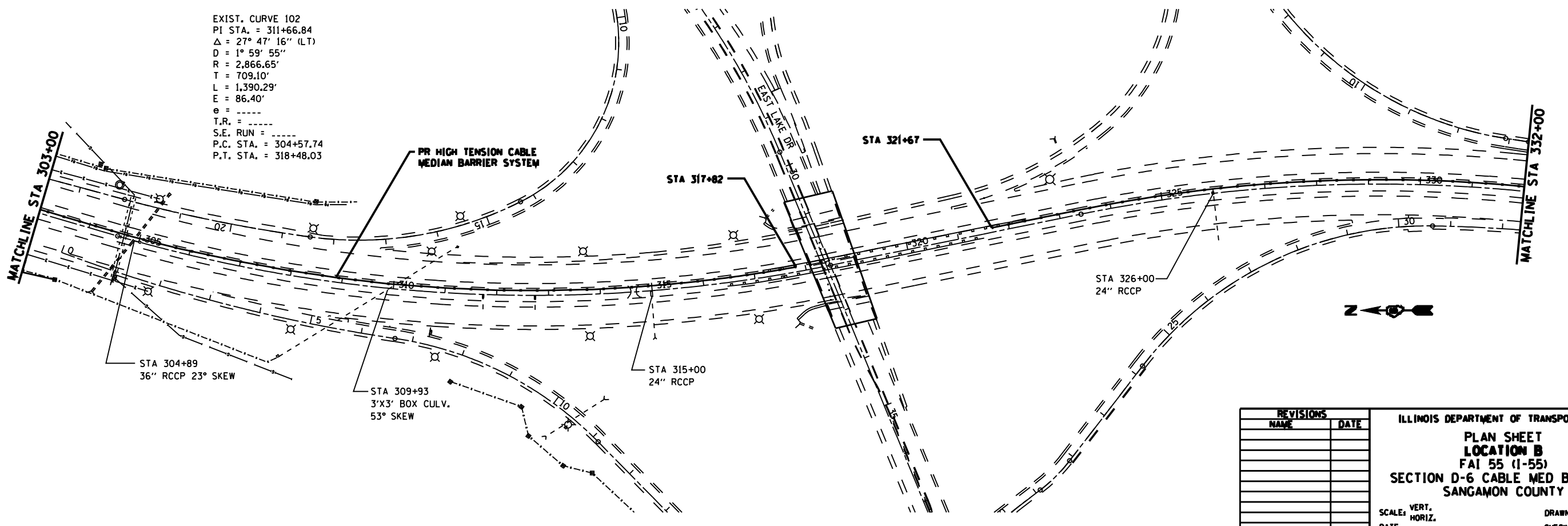


F.A.I. RTE.	SECTION	COUNTY	TOTAL SHEETS	SHEET NO.
55		SANGAMON	20	17
STA.		TO STA.		
FED. ROAD DIST. NO.		ILLINOIS FED. AID PROJECT		

D-6 CABLE MED BAR #1



EXIST. CURVE 102  
 PI STA. = 311+66.84  
 $\Delta = 27^\circ 47' 16''$  (LT)  
 $D = 1^\circ 59' 55''$   
 $R = 2,866.65'$   
 $T = 709.10'$   
 $L = 1,390.29'$   
 $E = 86.40'$   
 $e = \text{-----}$   
 $T.R. = \text{-----}$   
 $S.E. \text{ RUN} = \text{-----}$   
 $P.C. \text{ STA.} = 304+57.74$   
 $P.T. \text{ STA.} = 318+48.03$



REVISIONS	
NAME	DATE

ILLINOIS DEPARTMENT OF TRANSPORTATION

**PLAN SHEET  
LOCATION B**

FAI 55 (I-55)

**SECTION D-6 CABLE MED BAR #1  
SANGAMON COUNTY**

SCALE: VERT.    HORIZ.  
DATE

DRAWN BY  
CHECKED BY

PLOT DATE: 12/02/2009  
 FILE NAME: c:\projects\4825282\barrier\loc\_b\plan17.dgn  
 PLOT SCALE: 211.7847 / IN.  
 USER NAME: fough17@i