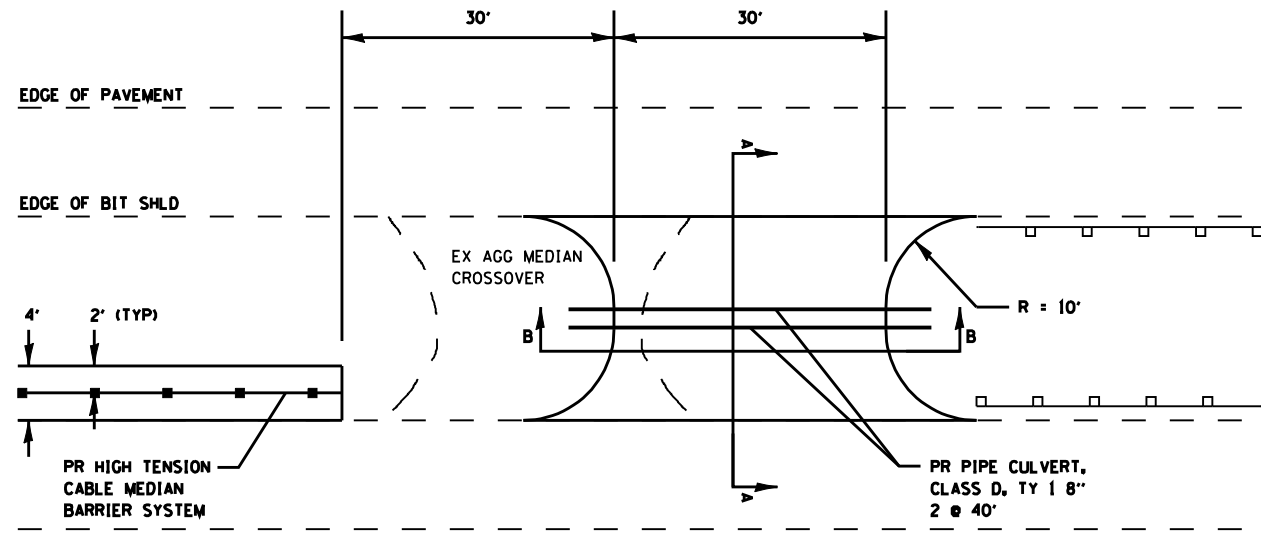
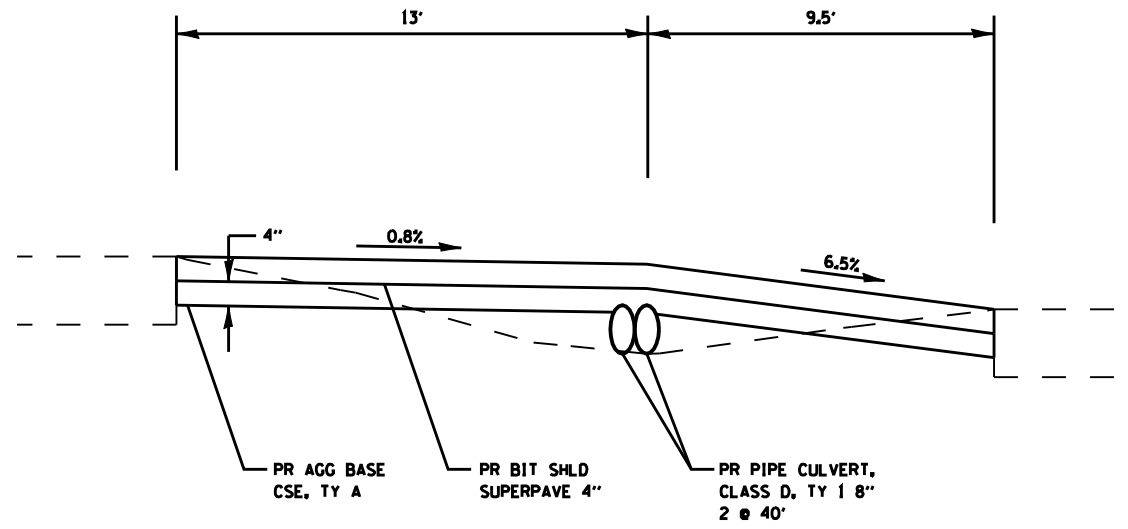


F.A.I. RTE.	SECTION	COUNTY	TOTAL SHEETS	SHEET NO.
55		SANGAMON	20	20
STA.		TO STA.		
FED. ROAD DIST. NO.	ILLINOIS	FED. AID PROJECT		

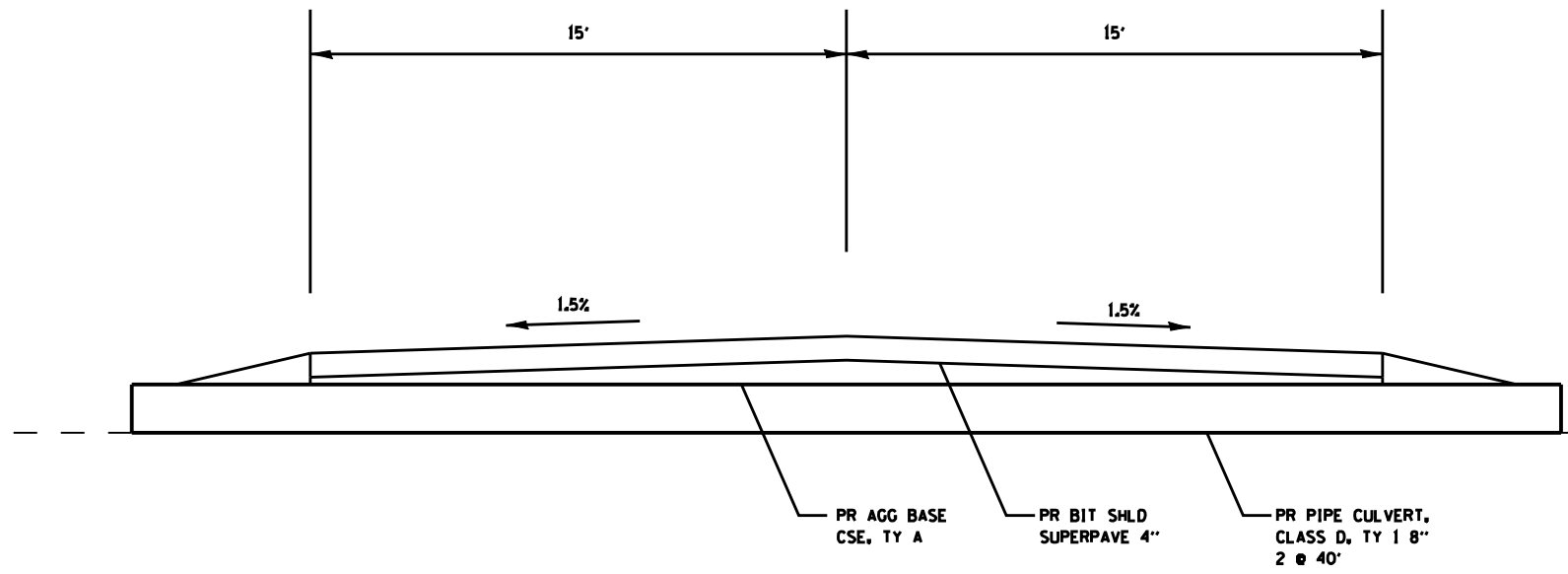
* - D-6 CABLE MED BAR #1



NEW MEDIAN CROSSOVER
STATION 252+50



SECTION A-A



SECTION B-B

NOT TO SCALE

REVISIONS	
NAME	DATE

ILLINOIS DEPARTMENT OF TRANSPORTATION
MEDIAN CROSSOVER DETAILS
 FAI 55 (I-55)
 SECTION D-6 CABLE MED BAR #1
 SANGAMON COUNTY

SCALE: VERT. _____
 HORIZ. _____
 DATE _____
 DRAWN BY _____
 CHECKED BY _____

PLOT DATE : 12/02/2009
 FILE NAME : c:\projects\4825252\barrier\crossover\detail.dwg
 PLOT SCALE : 211.7847 / IN.
 USER NAME : laughlin