

F.A.I. RTE.	SECTION	COUNTY	TOTAL SHEETS	SHEET NO.
55		SANGAMON	20	1

D-6 CABLE MED BAR #1

#1
= 21

STATE OF ILLINOIS
DEPARTMENT OF TRANSPORTATION
DIVISION OF HIGHWAYS

PROPOSED HIGHWAY PLANS

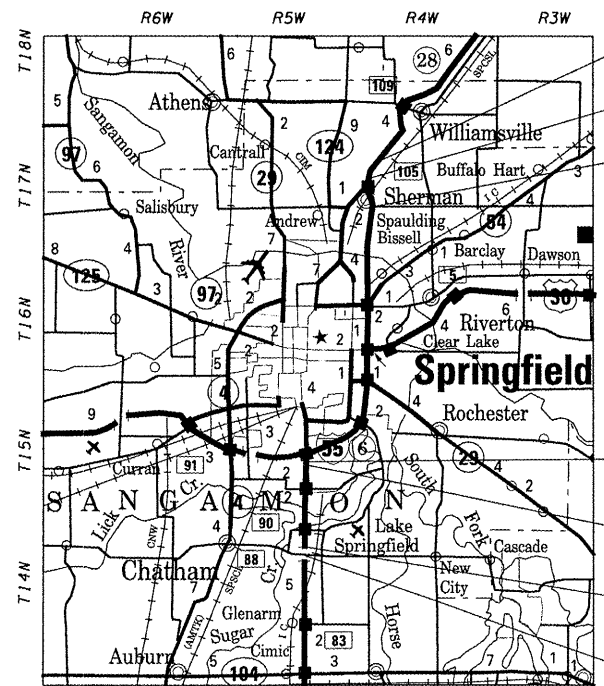
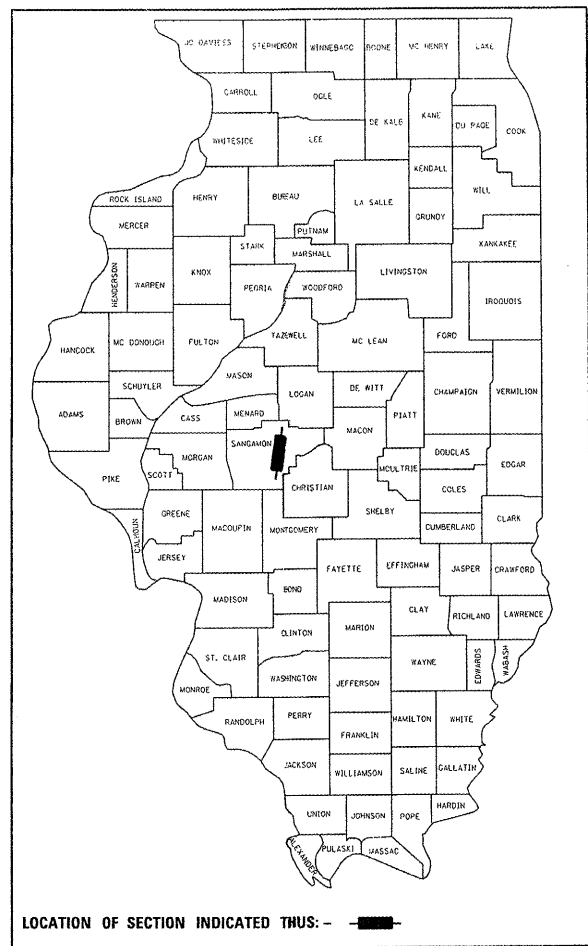
FAI 55 ROUTE (I-55)
SECTION D-6 CABLE MED BAR #1
SANGAMON COUNTY
PROJECT # ACHS-055-3(138)007
C-96-518-06

INDEX OF SHEETS

- 1 COVER SHEET
- 2 GENERAL NOTES
- 3 SUMMARY OF QUANTITIES
- 4-10 TYPICAL SECTIONS
- 11-18 PLAN SHEETS
- 19 DETAILS
- 20 MEDIAN CROSSOVER DETAILS
- 20A. CABLE MARKER DETAIL

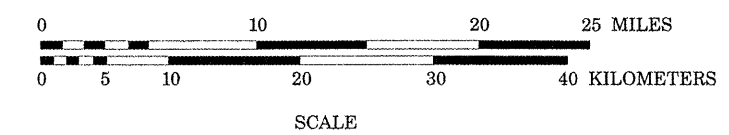
HIGHWAY STANDARDS

000001-01	701400-02
701101-01	701406-04
701106-06	702001-05

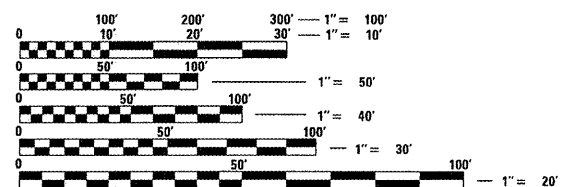


LOCATION A BEGINS
STA 259+84.00
STA EQN: STA 340+30.04 BK =
STA 340+38.65 AH
LOCATION A ENDS
STA 381+20.00

LOCATION B BEGINS
STA 14+15.00
STA EQN: STA 0+00.00 BK =
STA 167+19.74 AH
STA EQN: STA 369+27.35 BK =
STA 211+42.50 AH
LOCATION B ENDS
STA 225+50.00



GROSS LENGTH OF PROJECT = 100,700 FEET = 19.07 MILES
NET LENGTH OF PROJECT = 35,158 FEET = 6.66 MILES



FULL SIZE PLANS HAVE BEEN PREPARED USING STANDARD ENGINEERING SCALES. REDUCED SIZED PLANS WILL NOT CONFORM TO STANDARD SCALES. IN MAKING MEASUREMENTS ON REDUCED PLANS, THE ABOVE SCALES MAY BE USED.

J.U.L.I.E.
JOINT UTILITY LOCATION INFORMATION FOR EXCAVATION
1-800-892-0123

STATE OF ILLINOIS
DEPARTMENT OF TRANSPORTATION
DIVISION OF HIGHWAYS

SUBMITTED *[Signature]* 20 05
DEPUTY DIRECTOR OF HIGHWAYS, REGION ENGINEER

February 3, 20 06
[Signature]
ENGINEER OF DESIGN AND ENVIRONMENT

February 3, 20 06
[Signature]
DIRECTOR OF HIGHWAYS, CHIEF ENGINEER

PRINTED BY THE AUTHORITY
OF THE STATE OF ILLINOIS

PROJECT ENGINEER: SAL MADONIA (217) 782-4761
SQUAD LEADER: JEFFREY P. MYERS (217) 524-7940

CONTRACT NO. 72A10

SANGAMON COUNTY

SECTION D-6 CABLE MED BAR #1

Rev.

F.A.I. RTE.	SECTION	COUNTY	TOTAL SHEETS	SHEET NO.
55		SANGAMON	20	2
STA.		TO STA.		
FED. ROAD DIST. NO.		ILLINOIS FED. AID PROJECT		

• - D-6 CABLE MED BAR #1

GENERAL NOTES

1. THE CONTRACTOR SHALL BE RESPONSIBLE FOR PROTECTING UTILITY PROPERTY FROM CONSTRUCTION OPERATIONS AS OUTLINED IN ARTICLE 107.31 OF THE STANDARD SPECIFICATIONS. THE JULIE NUMBER IS 800-892-0123. A MINIMUM OF FORTY-EIGHT HOURS ADVANCE NOTICE IS REQUIRED. ANY DAMAGE TO THE UNDERGROUND FACILITIES, CAUSED BY THE CONTRACTOR SHALL BE REPAIRED TO THE SATISFACTION OF THE DEPARTMENT AT THE CONTRACTOR'S EXPENSE, INCLUDING TEMPORARY REPAIRS WHICH MAY BE REQUIRED TO KEEP THE FACILITY OPERATIONAL WHILE MATERIAL IS BEING OBTAINED TO MAKE PERMANENT REPAIRS.
2. THE LOCATIONS OF THOSE BURIED AND ABOVEGROUND UTILITIES SHOWN ARE APPROXIMATE, ARE SHOWN FOR CONTRACTOR INFORMATIONAL USE ONLY, AND ARE NOT TO BE REFERENCED FOR CONSTRUCTIONS PURPOSES. THE IMPLIED PRESENCE OR ABSENCE OF UTILITIES IS NOT TO BE CONSTRUED BY THE OWNER, ENGINEER, CONTRACTOR, OR SUBCONTRACTORS TO BE AN ACCURATE AND COMPLETE REPRESENTATION OF UTILITIES THAT MAY OR MAY NOT EXIST ON THE CONSTRUCTION SITE. BURIED AND ABOVEGROUND UTILITY LOCATION, IDENTIFICATION, AND MARKING ARE THE SOLE RESPONSIBILITY OF THE CONTRACTOR. REROUTING, DISCONNECTION, PROTECTION, ETC. OF ANY UTILITIES MUST BE COORDINATED BETWEEN THE CONTRACTOR, UTILITY COMPANY, AND OWNER. SITE SAFETY, INCLUDING THE AVOIDANCE OF HAZARDS ASSOCIATED WITH BURIED AND ABOVEGROUND UTILITIES, REMAINS THE SOLE RESPONSIBILITY OF THE CONTRACTOR.
3. FOR STABILIZATION, ALL TYPE III BARRICADES SHALL REQUIRE A MINIMUM OF FOUR SANDBAGS PER BARRICADE.
4. WHERE SECTION OR SUBSECTION MONUMENTS ARE ENCOUNTERED, THE ENGINEER SHALL BE NOTIFIED BEFORE SUCH MONUMENTS ARE REMOVED. THE CONTRACTOR SHALL PROTECT AND CAREFULLY PRESERVE ALL MONUMENTS UNTIL AN AUTHORIZED SURVEYOR OR AGENT HAS WITNESSED OR OTHERWISE REFERENCED THEIR LOCATION. THE CONTRACTOR SHALL BE RESPONSIBLE FOR HAVING AN AUTHORIZED SURVEYOR RE-ESTABLISH ANY SECTION OR SUBSECTION MONUMENTS DESTROYED BY HIS OPERATIONS.
5. ANY REFERENCE TO A STANDARD IN THESE PLANS SHALL BE INTERPRETED TO MEAN THE EDITION AS INDICATED BY THE SUBNUMBER LISTED ON THE INDEX OF SHEETS OR THE COPY OF THE STANDARD INCLUDED IN THESE PLANS.
6. UNLESS NOTED OTHERWISE, STATIONS AND OFFSETS REFER TO CENTERLINE OF PROJECT.
7. IN ADDITION TO FIELD SURVEYS AND AERIAL SURVEYS, PLAN DIMENSIONS AND DETAILS RELATIVE TO THE EXISTING FACILITIES HAVE BEEN TAKEN FROM EXISTING PLANS AND ARE SUBJECT TO CONSTRUCTION VARIATIONS. IT SHALL BE THE CONTRACTOR'S RESPONSIBILITY TO VERIFY SUCH DIMENSIONS AND DETAILS IN THE FIELD. SUCH VARIATIONS SHALL NOT BE A CAUSE FOR ADDITIONAL COMPENSATION DUE TO A CHANGE IN THE SCOPE OF THE WORK. HOWEVER, THE CONTRACTOR WILL BE PAID FOR THE QUANTITY ACTUALLY FURNISHED AT THE UNIT PRICE BID FOR THE WORK.

COMMITMENTS:

THERE ARE NO COMMITMENTS ON THIS PROJECT.

MIX REQUIREMENTS TABLE	
The following mixture requirements are applicable for this project.	
MIXTURE USE (S):	BITUMINOUS SHOULDERS SUPERPAVE
AC/PG:	PG 58-22
RAP%: (MAX)	15%
DESIGN AIR VOIDS:	2.0% @ N DESIGN = 30
MIXTURE COMPOSITION: (GRADATION MIXTURE)	BAM
FRICTION AGGREGATE:	N/A

DISTRICT SIX	
EXAMINED	November 2 2005 <i>Tommy Stewart</i> OPERATIONS ENGINEER
EXAMINED	Oct 24 2005 <i>W.R. Frey</i> PROGRAM IMPLEMENTATION ENGINEER
EXAMINED	December 9 2005 <i>William E. Motes</i> PROGRAM DEVELOPMENT ENGINEER

REVISIONS	
NAME	DATE

ILLINOIS DEPARTMENT OF TRANSPORTATION
 FAI 55 (I-55)
 GENERAL NOTES
 SECTION D-6 CABLE MED BAR #1
 SANGAMON COUNTY
 SCALE: VERT. _____
 HORIZ. _____
 DATE _____
 DRAWN BY _____
 CHECKED BY _____

PLOT DATE = 12/15/2005
 PLOT TIME = 10:55:02
 PLOT SCALE = 100.0000
 USER NAME = mjg@isp

F.A.I. RTE.	SECTION	COUNTY	TOTAL SHEETS	SHEET NO.
55		SANGAMON	20	3
STA.		TO STA.		
FED. ROAD DIST. NO.		ILLINOIS FED. AID PROJECT		

ILLINOIS DEPARTMENT OF TRANSPORTATION SUMMARY OF QUANTITIES

• - D-6 CABLE MED BAR #1

LOCATION OF WORK			<i>URBAN 90% FED. 10% STATE</i>	LOCATION A	LOCATION B
SUMMARY OF QUANTITIES				CONSTRUCTION TYPE CODE	CONSTRUCTION TYPE CODE
CODE NO.	ITEM	UNIT	TOTAL QUANTITY	I000	I000
35100100	AGGREGATE BASE COURSE, TYPE A	TON	19		19
48202200	BITUMINOUS SHOULDERS SUPERPAVE 4"	SQ YD	12,765	4,857	7,908
54200213	PIPE CULVERTS, CLASS D, TYPE 1 8"	FOOT	80		80
67100100	MOBILIZATION	L SUM	1	0.4	0.6
70100700	TRAFFIC CONTROL AND PROTECTION, STANDARD 701406	L SUM	1	0.4	0.6
Z0029650	HIGH TENSION CABLE MEDIAN BARRIER SYSTEM	FOOT	28,532	10,928	17,604
X0325231	CABLE GUARD MARKER	EACH	732	280	452

PLOT DATE = 12/15/2005
 FILE NAME = I:\B55\14552302\barrier- fence\shh\shh.dgn
 PLOT SCALE = 1/8"=1'-0"
 USER NAME = mjg@idj

Rev.

REVISIONS	
NAME	DATE

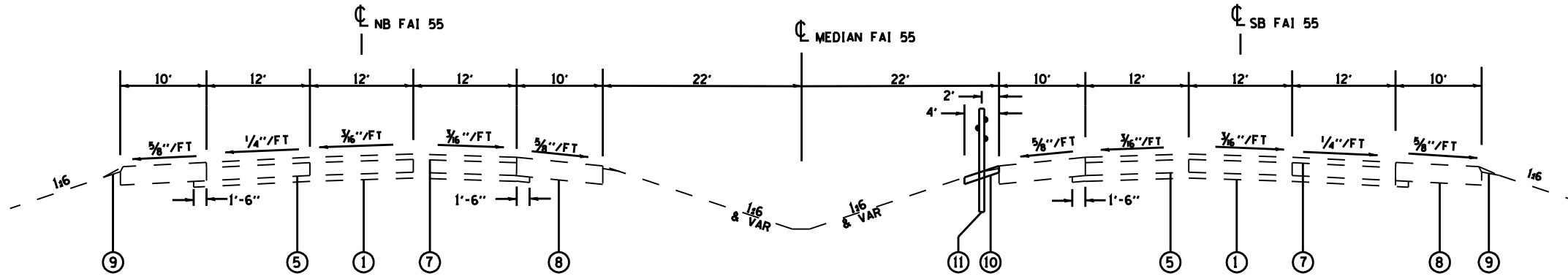
ILLINOIS DEPARTMENT OF TRANSPORTATION
 SUMMARY OF QUANTITIES
 FAI 55 (I-55)
 SECTION D-6 CABLE MED BAR #1
 SANGAMON COUNTY

SCALE: VERT. _____
 DATE _____

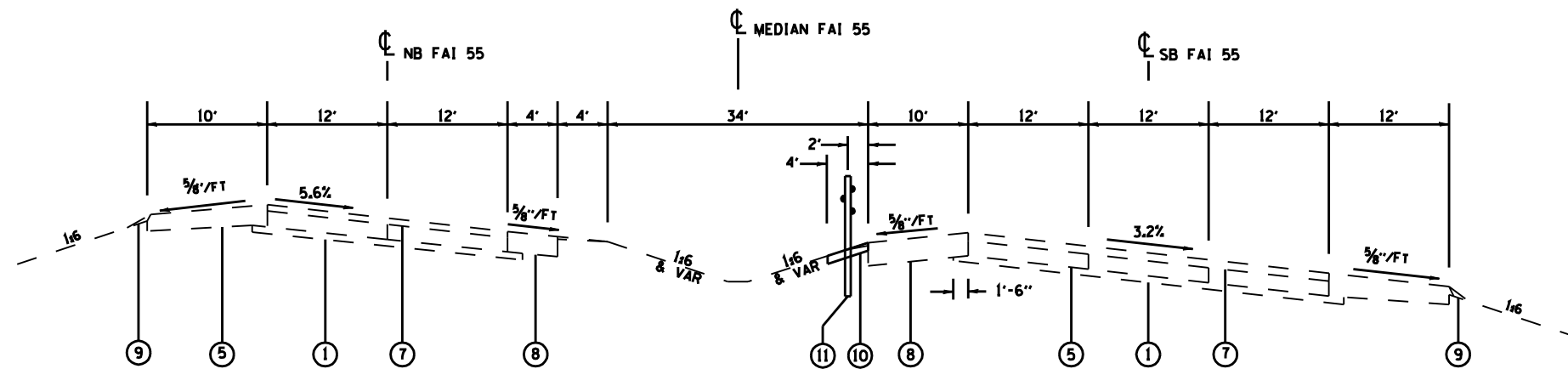
DRAWN BY _____
 CHECKED BY _____

F.A.I. RTE.	SECTION	COUNTY	TOTAL SHEETS	SHEET NO.
55		SANGAMON	20	4
STA.		TO STA.		
FED. ROAD DIST. NO.	ILLINOIS	FED. AID PROJECT		

• - D-6 CABLE MED BAR #1



FAI-55 LOCATION A
STA 259+84.00 TO STA 273+05.00



FAI-55 LOCATION A
STA 273+05.00 TO STA 290+17.81
STA 349+10.84 TO STA 366+63.00

LEGEND

- 1 EX STABILIZED SUB-BASE, 4"
- 2 EX SUB-BASE, GRANULAR MATERIAL
- 3 EX BURIED PAVEMENT
- 4 EX CRC PAVEMENT, 8"
- 5 EX CRC PAVEMENT, 9"
- 6 EX CRC PAVEMENT, 11 1/2"
- 7 EX OVERLAY 3 3/4 "
- 8 EX STABILIZED SHOULDER, 8"
- 9 EX AGGREGATE SHOULDER
- 10 PR BITUMINOUS SHOULDERS SUPERPAVE 4"
- 11 PR HIGH TENSION CABLE MEDIAN BARRIER

REVISIONS	
NAME	DATE

ILLINOIS DEPARTMENT OF TRANSPORTATION

FAI 55 (I-55)
TYPICAL SECTIONS
SECTION D-6 CABLE MED BAR #1
SANGAMON COUNTY

SCALE: VERT. _____
HORIZ. _____

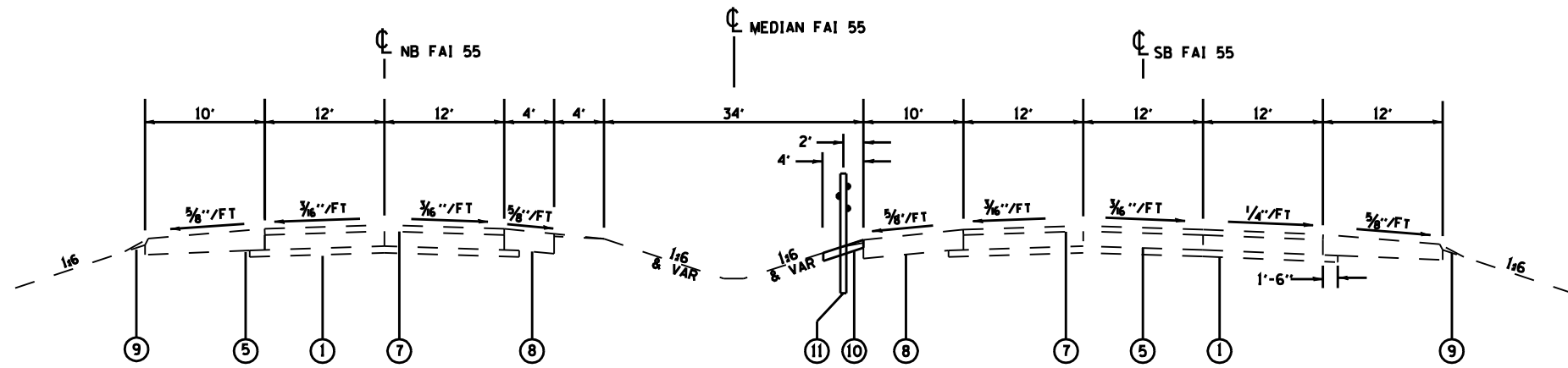
DATE _____

DRAWN BY _____
CHECKED BY _____

PLOT DATE: 12/04/2009
 FILE NAME: c:\p\proj\55\4825282\barrier\fa55\typical\ludg
 PLOT SCALE: 42.2500' / IN.
 USER NAME: fenghui

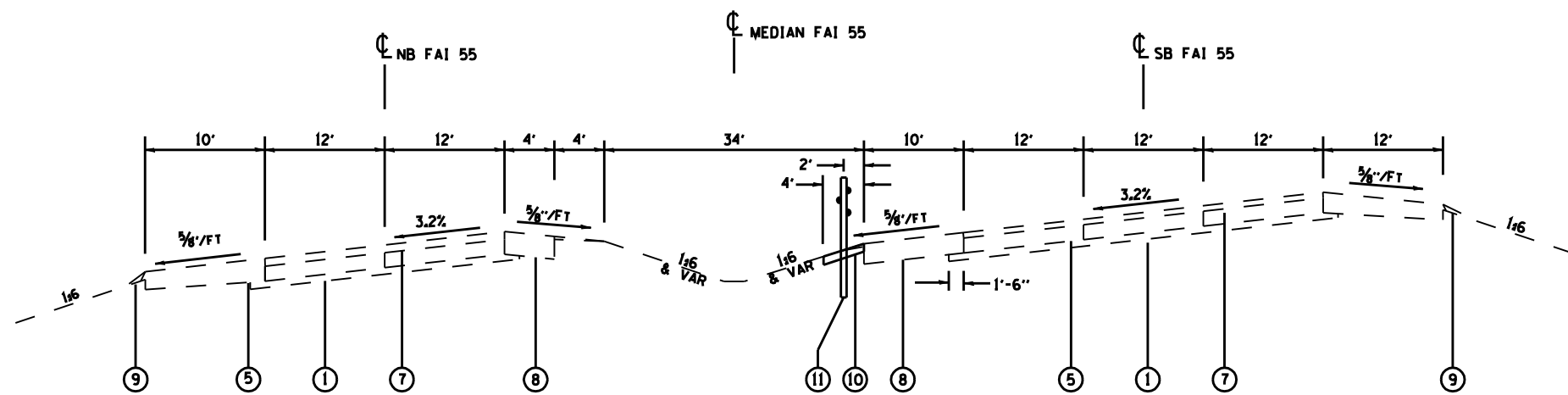
F.A.I. RTE.	SECTION	COUNTY	TOTAL SHEETS	SHEET NO.
55		SANGAMON	20	5
STA.		TO STA.		
FED. ROAD DIST. NO.	ILLINOIS	FED. AID PROJECT		

- D-6 CABLE MED BAR #1



FAI-55 LOCATION A

STA 290+17.81 TO STA 297+48.00
 STA 341+23.00 TO STA 349+10.84
 STA 366+63.00 TO STA 371+10.00



FAI-55 LOCATION A

STA 297+48.00 TO STA 341+23.00
 STA 371+10.00 TO STA 381+20.00

LEGEND

- 1 EX STABILIZED SUB-BASE, 4"
- 2 EX SUB-BASE, GRANULAR MATERIAL
- 3 EX BURIED PAVEMENT
- 4 EX CRC PAVEMENT, 8"
- 5 EX CRC PAVEMENT, 9"
- 6 EX CRC PAVEMENT, 11 1/2"
- 7 EX OVERLAY 3 3/4 "
- 8 EX STABILIZED SHOULDER, 8"
- 9 EX AGGREGATE SHOULDER
- 10 PR BITUMINOUS SHOULDERS SUPERPAVE 4"
- 11 PR HIGH TENSION CABLE MEDIAN BARRIER

REVISIONS	
NAME	DATE

ILLINOIS DEPARTMENT OF TRANSPORTATION

FAI 55 (I-55)
TYPICAL SECTIONS
SECTION D-6 CABLE MED BAR #1
SANGAMON COUNTY

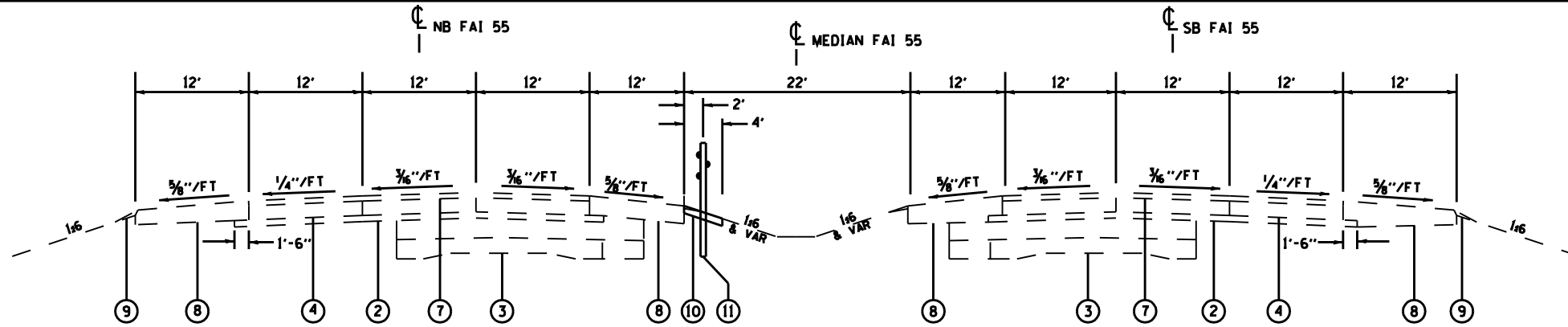
SCALE: VERT. _____
 HORIZ. _____

DRAWN BY _____
 CHECKED BY _____

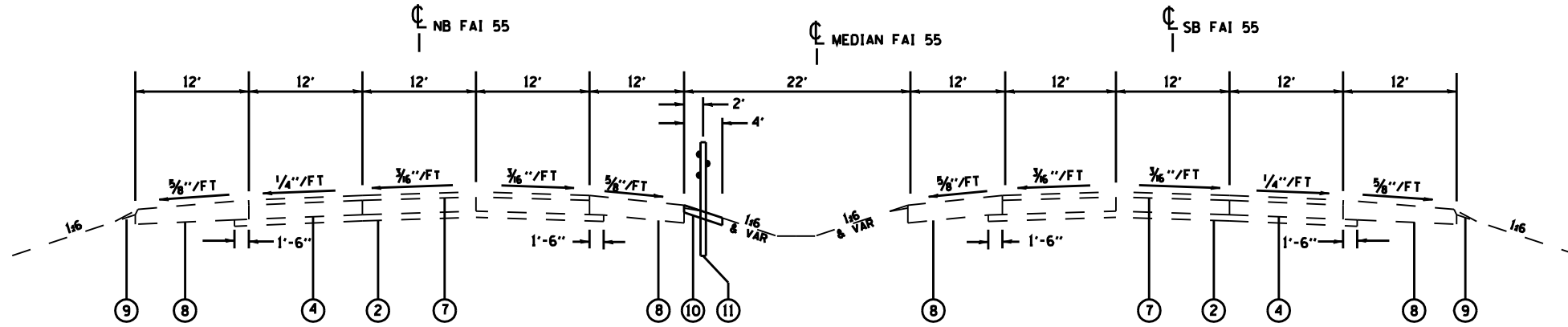
PLOT DATE: 12/01/2009
 FILE NAME: c:\p\proj\55\422504\barrier\fa55\typical\lodge.dwg
 PLOT SCALE: 1/4" = 1'-0"
 USER NAME: fenghui

F.A.I. RTE.	SECTION	COUNTY	TOTAL SHEETS	SHEET NO.
55		SANGAMON	20	6
STA.		TO STA.		
FED. ROAD DIST. NO.		ILLINOIS FED. AID PROJECT		

- D-6 CABLE MED BAR #1



FAI-55 LOCATION B
 NB STA 0+19.78 TO STA 0+00.00
 SB STA 8+22.30 TO STA 0+00.00
 STA EON STA 0+00.00 BK = 167+19.74 AH
 NB STA 167+19.74 TO STA 236+00.55
 SB STA 167+19.74 TO STA 236+98.98
 NB STA 244+99.50 TO STA 252+21.29
 SB STA 244+60.13 TO STA 253+26.27



FAI-55 LOCATION B
 NB STA 14+15.00 TO STA 0+19.78
 SB STA 14+15.00 TO STA 8+22.30
 NB STA 236+00.55 TO STA 244+99.50
 SB STA 236+98.98 TO STA 244+60.13

LEGEND

- 1 EX STABILIZED SUB-BASE, 4"
- 2 EX SUB-BASE, GRANULAR MATERIAL
- 3 EX BURIED PAVEMENT
- 4 EX CRC PAVEMENT, 8"
- 5 EX CRC PAVEMENT, 9"
- 6 EX CRC PAVEMENT, 11 1/2"
- 7 EX OVERLAY 3 3/4 "
- 8 EX STABILIZED SHOULDER, 8"
- 9 EX AGGREGATE SHOULDER
- 10 PR BITUMINOUS SHOULDERS SUPERPAVE 4"
- 11 PR HIGH TENSION CABLE MEDIAN BARRIER

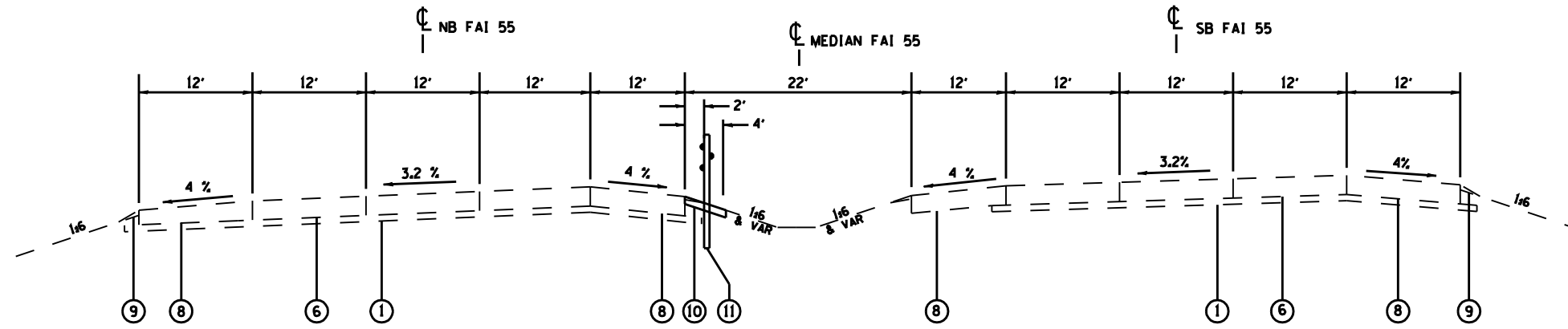
REVISIONS	
NAME	DATE

ILLINOIS DEPARTMENT OF TRANSPORTATION
 FAI 55 (I-55)
 TYPICAL SECTIONS
 SECTION D-6 CABLE MED BAR #1
 SANGAMON COUNTY
 SCALE: VERT. _____
 HORIZ. _____
 DATE _____
 DRAWN BY _____
 CHECKED BY _____

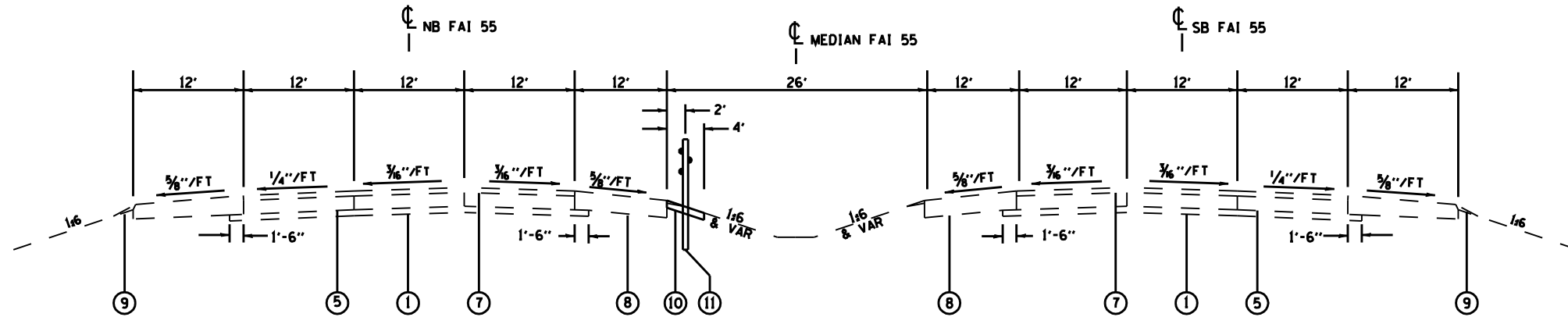
PLOT DATE: 12/02/2009
 FILE NAME: c:\p\proj\55\4825282\barrier\fa55\typical\pav.dwg
 PLOT SCALE: 42.25%
 USER NAME: fenghui

F.A.I. RTE.	SECTION	COUNTY	TOTAL SHEETS	SHEET NO.
55	.	SANGAMON	20	7
STA.		TO STA.		
FED. ROAD DIST. NO.		ILLINOIS FED. AID PROJECT		

• - D-6 CABLE MED BAR #1



FAI-55 LOCATION B
 NB STA 252+21.29 TO STA 253+45.00
 SB STA 253+26.27 TO STA 253+45.00



FAI-55 LOCATION B
 STA 301+50.00 TO STA 302+17.85

LEGEND

- 1 EX STABILIZED SUB-BASE, 4"
- 2 EX SUB-BASE, GRANULAR MATERIAL
- 3 EX BURIED PAVEMENT
- 4 EX CRC PAVEMENT, 8"
- 5 EX CRC PAVEMENT, 9"
- 6 EX CRC PAVEMENT, 11 1/2"
- 7 EX OVERLAY 3 3/4 "
- 8 EX STABILIZED SHOULDER, 8"
- 9 EX AGGREGATE SHOULDER
- 10 PR BITUMINOUS SHOULDERS SUPERPAVE 4"
- 11 PR HIGH TENSION CABLE MEDIAN BARRIER

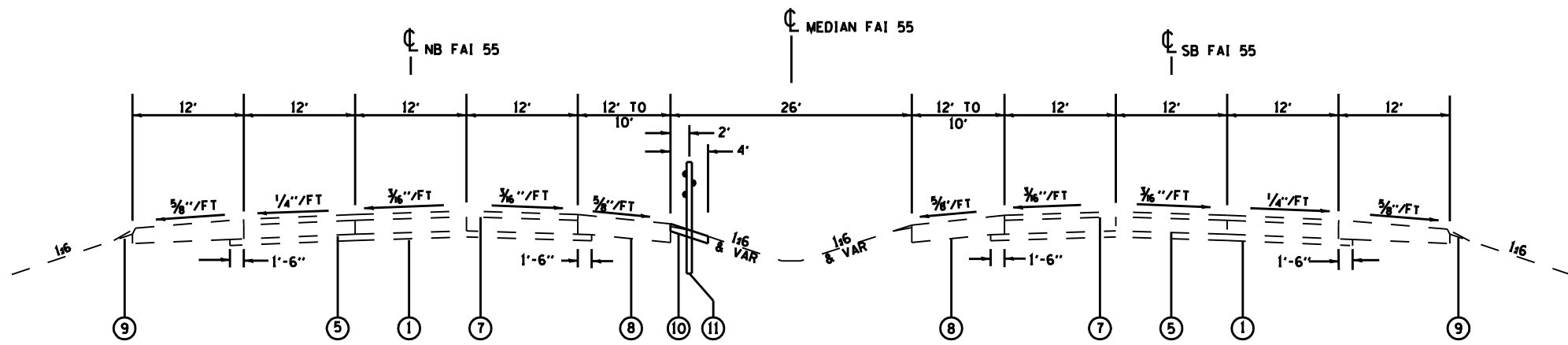
REVISIONS	
NAME	DATE

ILLINOIS DEPARTMENT OF TRANSPORTATION
FAI 55 (I-55)
TYPICAL SECTIONS
SECTION D-6 CABLE MED BAR #1
SANGAMON COUNTY
 VERT. SCALE: DRAWN BY
 HORIZ. CHECKED BY
 DATE

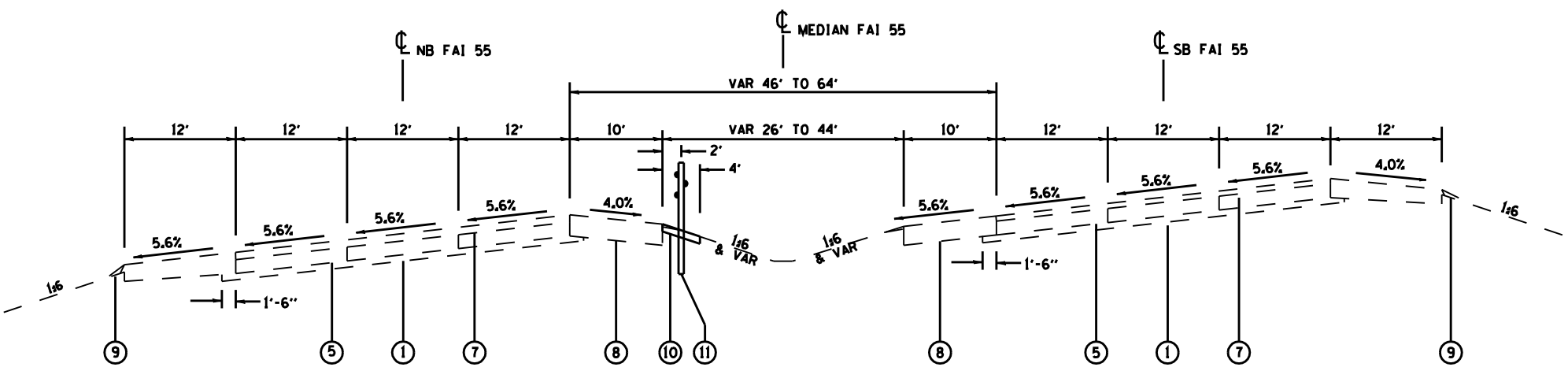
PLOT DATE: 12/14/2009
 FILE NAME: c:\p\proj\55\422504\barrier\fa55\typ\typ.dwg
 PLOT SCALE: 1/4"=1'-0"
 USER NAME: jleung

F.A.I. RTE.	SECTION	COUNTY	TOTAL SHEETS	SHEET NO.
55		SANGAMON	20	8
STA.		TO STA.		
FED. ROAD DIST. NO.	ILLINOIS	FED. AID PROJECT		

• - D-6 CABLE MED BAR #1



FAI-55 LOCATION B
 STA 302+17.85 TO STA 304+57.74



FAI-55 LOCATION B
 STA 304+57.74 TO STA 318+48.03
 STA 352+41.39 TO STA 369+27.35

LEGEND

- 1 EX STABILIZED SUB-BASE, 4"
- 2 EX SUB-BASE, GRANULAR MATERIAL
- 3 EX BURIED PAVEMENT
- 4 EX CRC PAVEMENT, 8"
- 5 EX CRC PAVEMENT, 9"
- 6 EX CRC PAVEMENT, 11 1/2"
- 7 EX OVERLAY 3 3/4 "
- 8 EX STABILIZED SHOULDER, 8"
- 9 EX AGGREGATE SHOULDER
- 10 PR BITUMINOUS SHOULDERS SUPERPAVE 4"
- 11 PR HIGH TENSION CABLE MEDIAN BARRIER

REVISIONS	
NAME	DATE

ILLINOIS DEPARTMENT OF TRANSPORTATION

FAI 55 (I-55)
TYPICAL SECTIONS
SECTION D-6 CABLE MED BAR #1
SANGAMON COUNTY

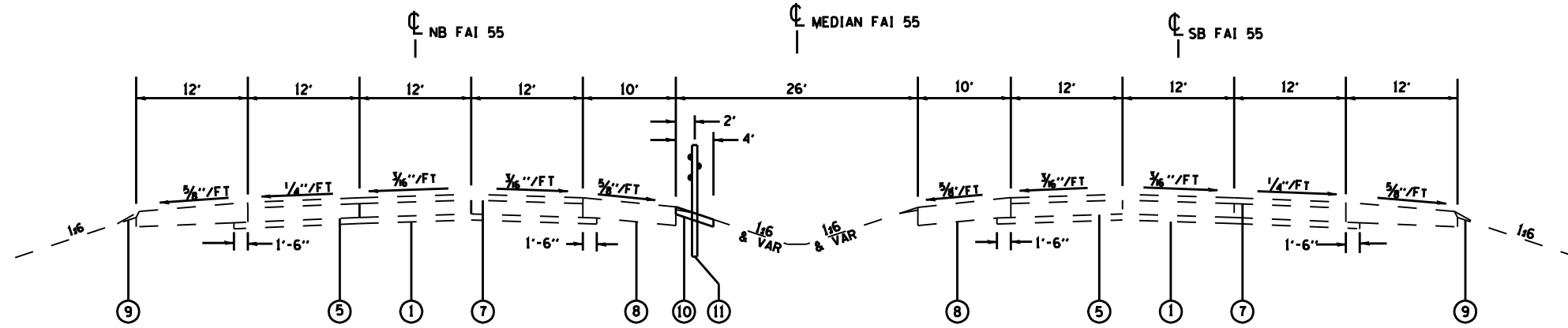
SCALE: VERT. _____
 HORIZ. _____

DATE _____ DRAWN BY _____
 CHECKED BY _____

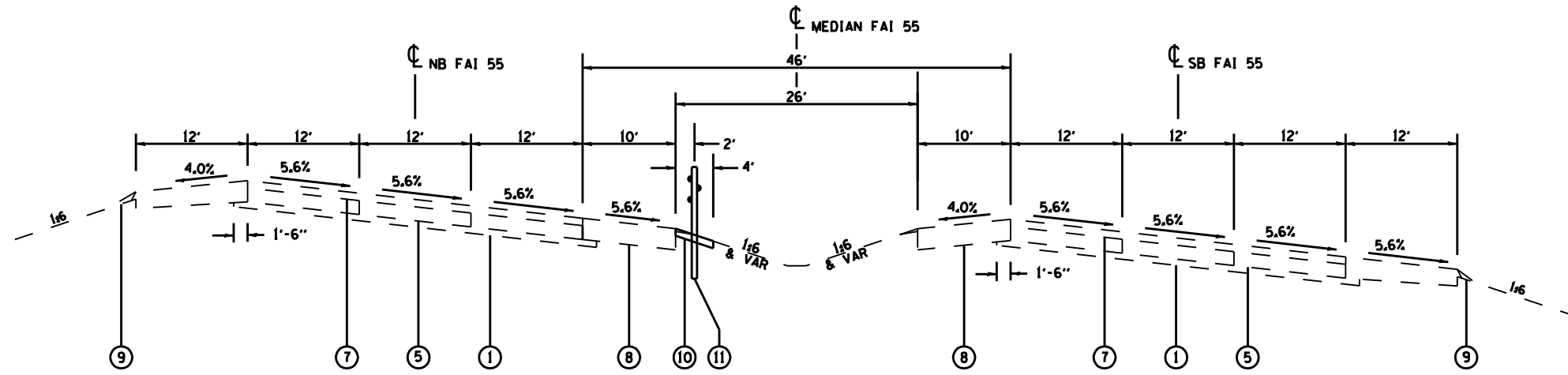
PLOT DATE: 12/14/2009
 FILE NAME: c:\p\proj\55\422524\barrier\fa55\typical\lodge.dwg
 PLOT SCALE: 42.2524' / IN.
 USER NAME: fanghui

F.A.I. RTE.	SECTION	COUNTY	TOTAL SHEETS	SHEET NO.
55		SANGAMON	20	9
STA.		TO STA.		
FED. ROAD DIST. NO.	ILLINOIS	FED. AID PROJECT		

- D-6 CABLE MED BAR #1



FAI-55 LOCATION B
 STA 318+48.03 TO STA 323+41.33
 STA 346+74.89 TO STA 352+42.74



FAI-55 LOCATION B
 STA 323+41.33 TO STA 346+74.89

LEGEND

- 1 EX STABILIZED SUB-BASE, 4"
- 2 EX SUB-BASE, GRANULAR MATERIAL
- 3 EX BURIED PAVEMENT
- 4 EX CRC PAVEMENT, 8"
- 5 EX CRC PAVEMENT, 9"
- 6 EX CRC PAVEMENT, 11 1/2"
- 7 EX OVERLAY 3 3/4 "
- 8 EX STABILIZED SHOULDER, 8"
- 9 EX AGGREGATE SHOULDER
- 10 PR BITUMINOUS SHOULDERS SUPERPAVE 4"
- 11 PR HIGH TENSION CABLE MEDIAN BARRIER

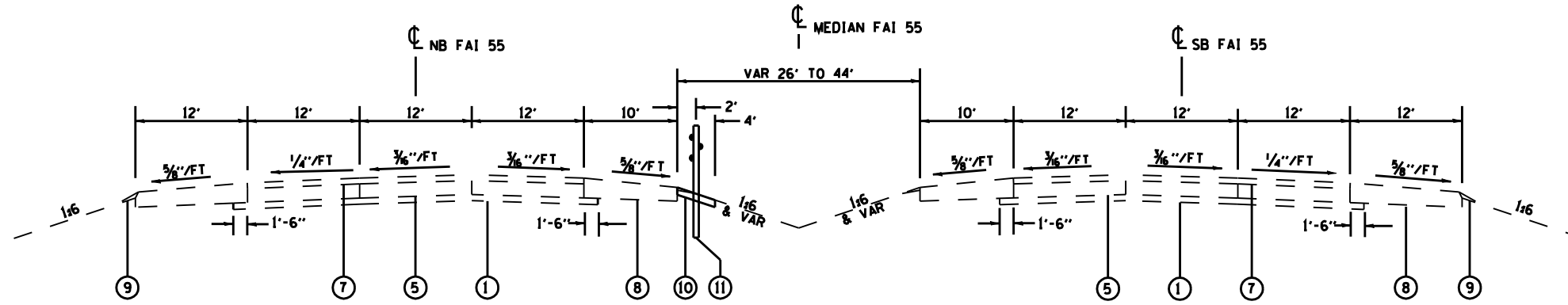
REVISIONS	
NAME	DATE

ILLINOIS DEPARTMENT OF TRANSPORTATION
 FAI 55 (I-55)
 TYPICAL SECTIONS
 SECTION D-6 CABLE MED BAR #1
 SANGAMON COUNTY
 SCALE: VERT. _____
 HORIZ. _____
 DATE _____
 DRAWN BY _____
 CHECKED BY _____

PLOT DATE: 12/01/2009
 FILE NAME: c:\p\projects\4823282\barrier\1\fa55\typical\lodge.plt
 PLOT SCALE: 1/4"=1'-0"
 USER NAME: fenghui

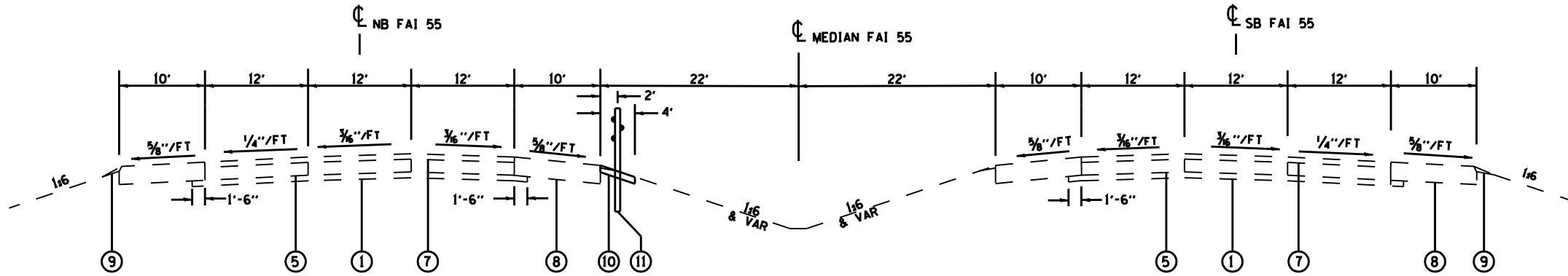
F.A.I. RTE.	SECTION	COUNTY	TOTAL SHEETS	SHEET NO.
55		SANGAMON	20	10
STA.		TO STA.		
FED. ROAD DIST. NO.	ILLINOIS	FED. AID PROJECT		

• - D-6 CABLE MED BAR #1



FAI-55 LOCATION B

STA EON STA 369+27.35 BK = STA 211+42.20 AH
 STA 211+42.2 TO STA 217+50



FAI-55 LOCATION B

STA 217+50 TO STA 225+50.00

LEGEND

- 1 EX STABILIZED SUB-BASE, 4"
- 2 EX SUB-BASE, GRANULAR MATERIAL
- 3 EX BURIED PAVEMENT
- 4 EX CRC PAVEMENT, 8"
- 5 EX CRC PAVEMENT, 9"
- 6 EX CRC PAVEMENT, 11 1/2"
- 7 EX OVERLAY 3 3/4 "
- 8 EX STABILIZED SHOULDER, 8"
- 9 EX AGGREGATE SHOULDER
- 10 PR BITUMINOUS SHOULDERS SUPERPAVE 4"
- 11 PR HIGH TENSION CABLE MEDIAN BARRIER

REVISIONS	
NAME	DATE

ILLINOIS DEPARTMENT OF TRANSPORTATION

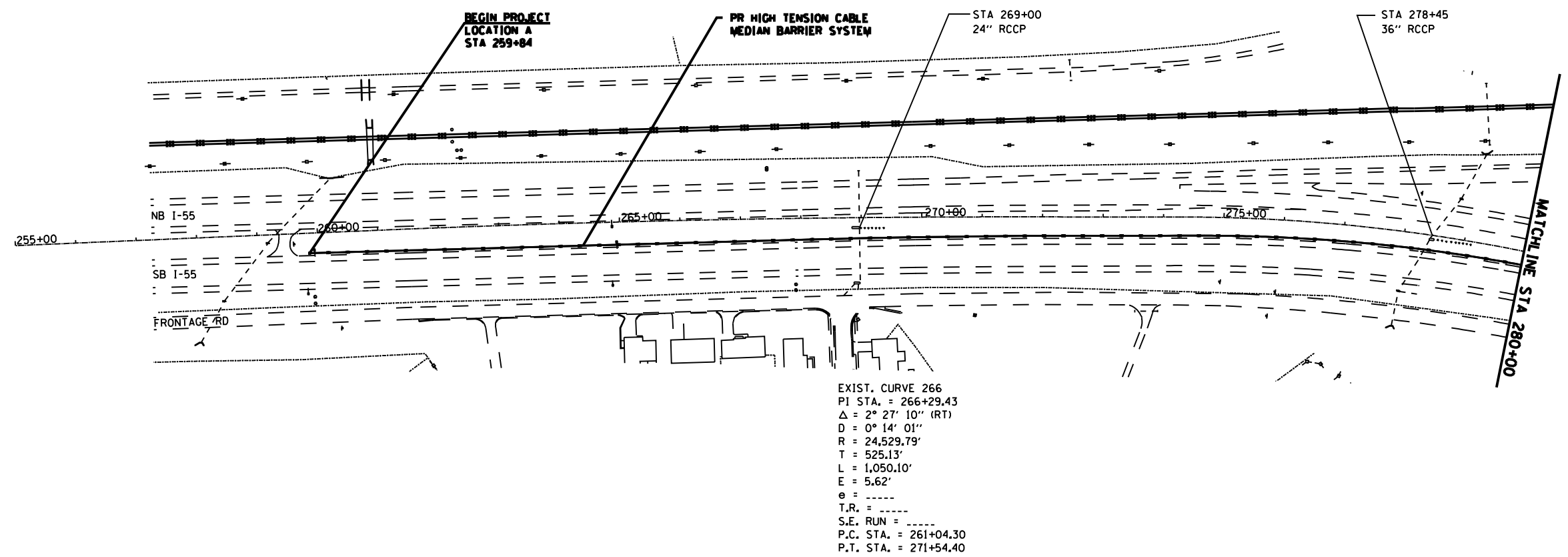
FAI 55 (I-55)
 TYPICAL SECTIONS
 SECTION D-6 CABLE MED BAR #1
 SANGAMON COUNTY

SCALE: VERT. _____
 HORIZ. _____
 DATE _____

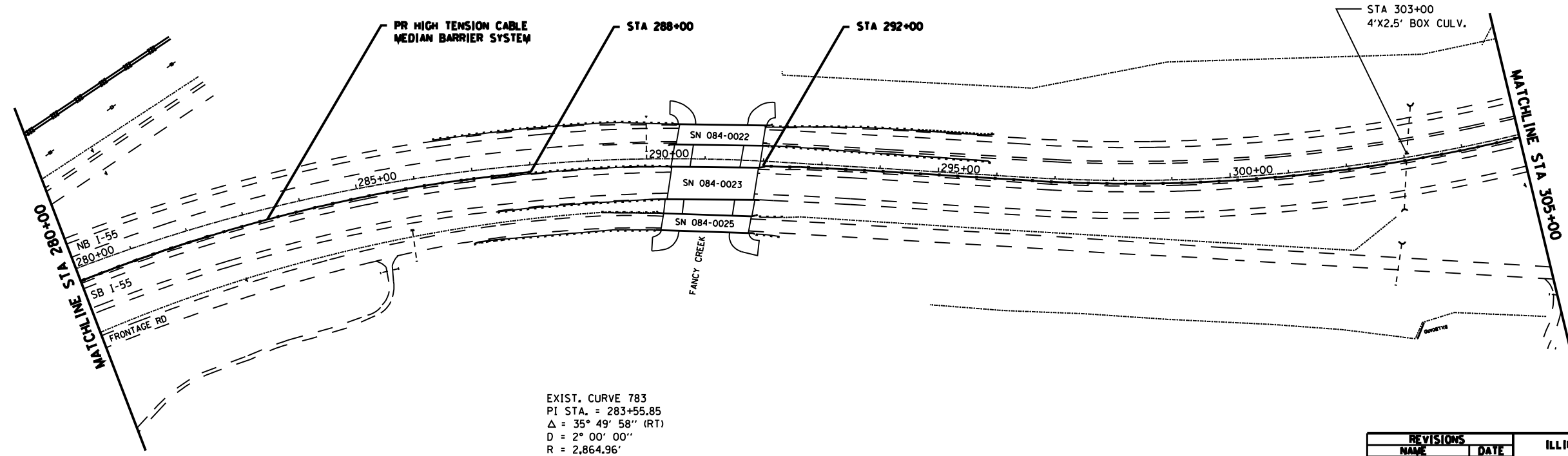
DRAWN BY _____
 CHECKED BY _____

PLOT DATE: 12/04/2009
 FILE NAME: c:\p\proj\548282\barrier\fa55\typical\ludg
 PLOT SCALE: 42.25% / IN
 USER NAME: fanghui

F.A.I. RTE.	SECTION	COUNTY	TOTAL SHEETS	SHEET NO.
55		SANGAMON	20	11
STA.		TO STA.		
FED. ROAD DIST. NO.	ILLINOIS	FED. AID PROJECT		
* - D-6 CABLE MED BAR #1				



EXIST. CURVE 266
 PI STA. = 266+29.43
 $\Delta = 2^\circ 27' 10''$ (RT)
 D = $0^\circ 14' 01''$
 R = 24,529.79'
 T = 525.13'
 L = 1,050.10'
 E = 5.62'
 e = -----
 T.R. = -----
 S.E. RUN = -----
 P.C. STA. = 261+04.30
 P.T. STA. = 271+54.40



EXIST. CURVE 783
 PI STA. = 283+55.85
 $\Delta = 35^\circ 49' 58''$ (RT)
 D = $2^\circ 00' 00''$
 R = 2,864.96'
 T = 926.26'
 L = 1,791.74'
 E = 146.01'
 e = -----
 T.R. = -----
 S.E. RUN = -----
 P.C. STA. = 274+29.59
 P.T. STA. = 292+21.34

REVISIONS	
NAME	DATE

ILLINOIS DEPARTMENT OF TRANSPORTATION
PLAN SHEET
LOCATION A
FAI 55 (I-55)
SECTION D-6 CABLE MED BAR #1
SANGAMON COUNTY

SCALE: VERT. _____
 HORIZ. _____

DATE _____ DRAWN BY _____
 CHECKED BY _____

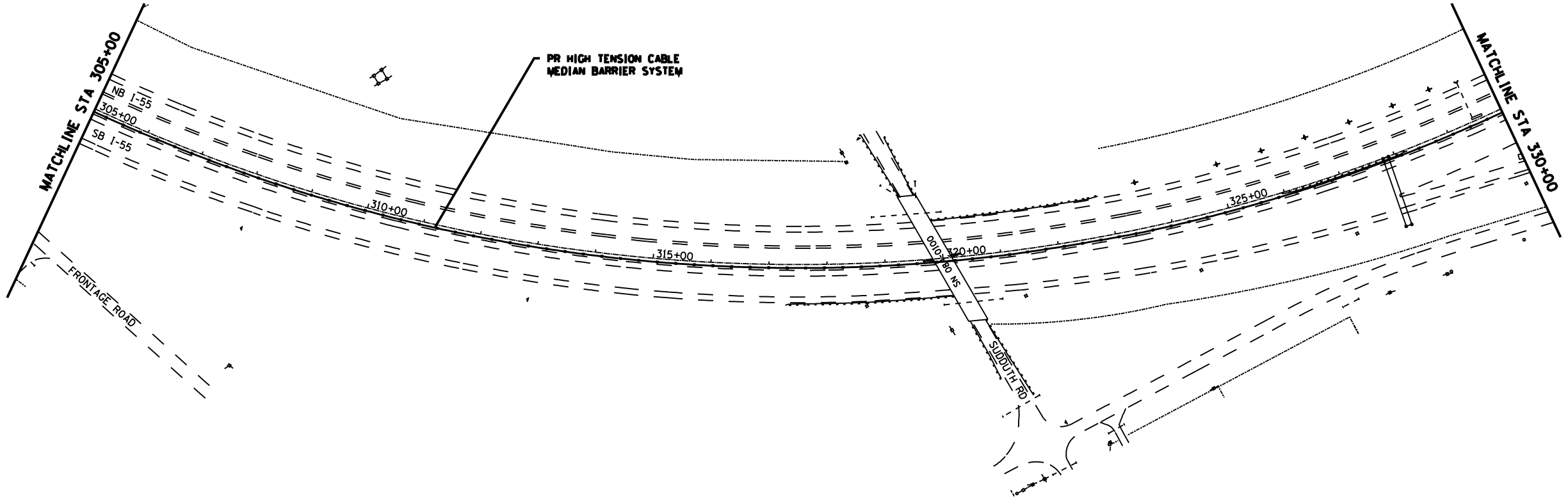
PLOT DATE = 12/02/2009
 FILE NAME = c:\projects\4825282\barrier\loc_a\plan10.dgn
 PLOT SCALE = 211.7847 / IN.
 USER NAME = faugh1@i

F.A.I. RTE.	SECTION	COUNTY	TOTAL SHEETS	SHEET NO.
55		SANGAMON	20	12

STA.	TO STA.

FED. ROAD DIST. NO. ILLINOIS FED. AID PROJECT
 * - D-6 CABLE MED BAR #1

EXIST. CURVE 723
 PI STA. = 323+96.23
 $\Delta = 87^\circ 32' 05''$ (LT)
 D = $1^\circ 59' 55''$
 R = 2,866.85'
 T = 2,746.07'
 L = 4,379.88'
 E = 1,103.00'
 $\theta =$ -----
 T.R. = -----
 S.E. RUN = -----
 P.C. STA. = 296+50.16
 P.T. STA. = 340+30.04



PLOT DATE : 12/02/2009
 FILE NAME : c:\projects\48282\barrier\locas\plan100.dgn
 PLOT SCALE : 211.7847 / IN.
 USER NAME : fough1001

REVISIONS	
NAME	DATE

ILLINOIS DEPARTMENT OF TRANSPORTATION
PLAN SHEET
LOCATION A
 FAI 55 (I-55)
 SECTION D-6 CABLE MED BAR #1
 SANGAMON COUNTY

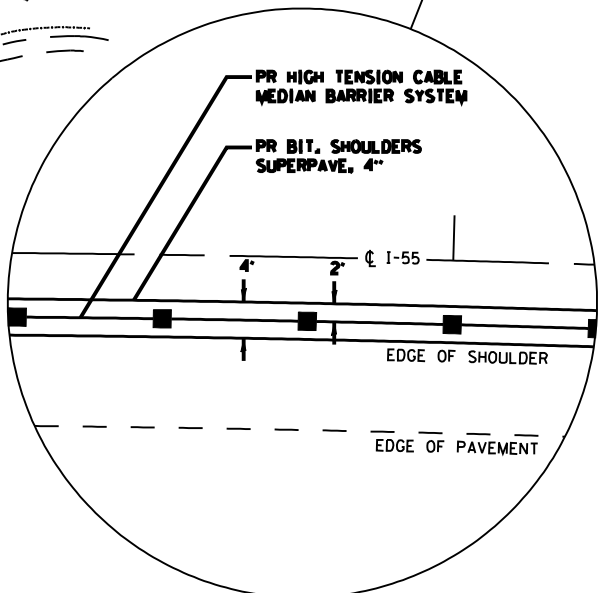
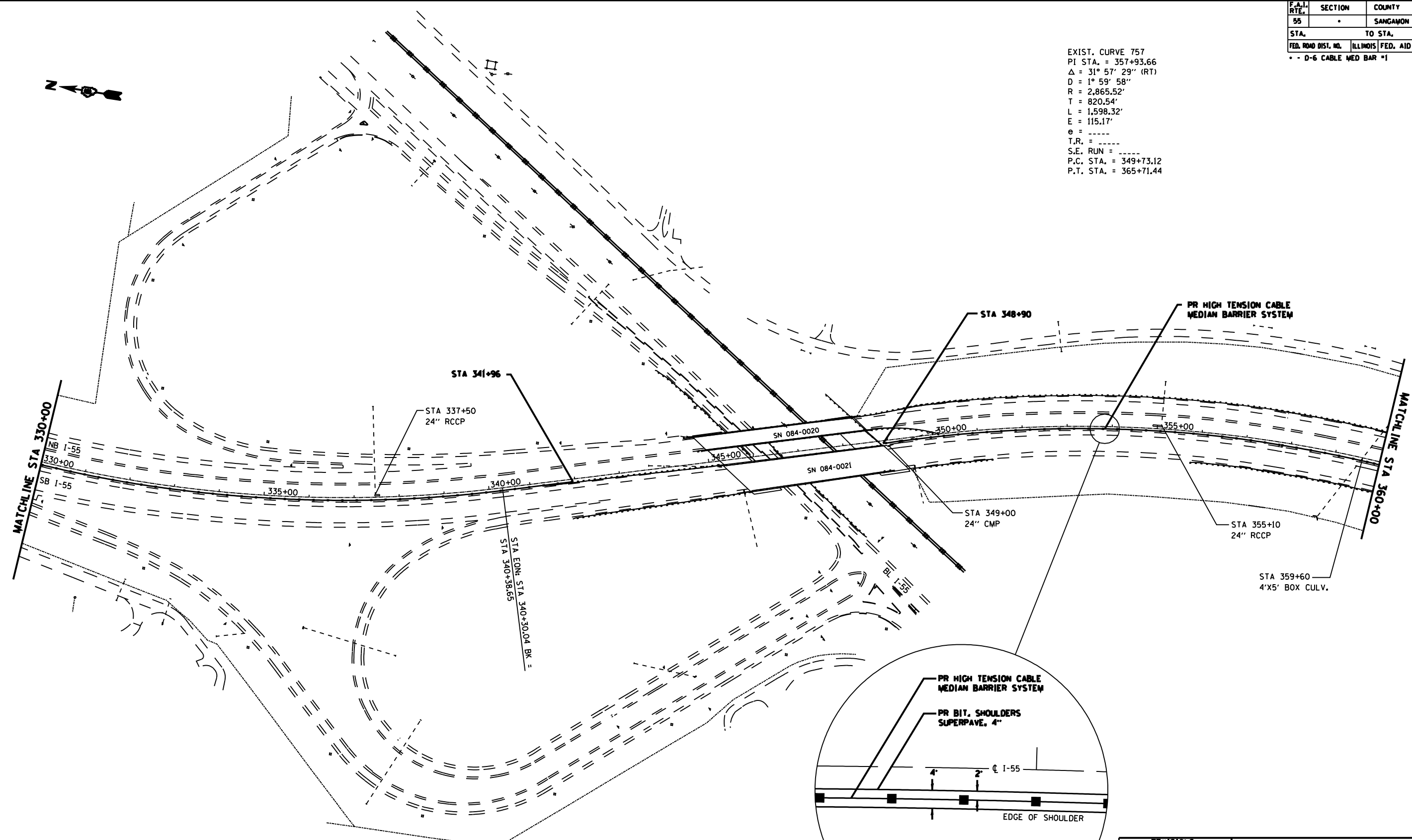
SCALE: VERT. _____
 HORIZ. _____
 DATE _____

DRAWN BY _____
 CHECKED BY _____

F.A.I. RTE.	SECTION	COUNTY	TOTAL SHEETS	SHEET NO.
55		SANGAMON	20	13
STA.		TO STA.		
FED. ROAD DIST. NO.	ILLINOIS	FED. AID PROJECT		

EXIST. CURVE 757
 PI STA. = 357+93.66
 $\Delta = 31^\circ 57' 29''$ (RT)
 $D = 1^\circ 59' 58''$
 $R = 2,865.52'$
 $T = 820.54'$
 $L = 1,598.32'$
 $E = 115.17'$
 $e = \text{-----}$
 $T.R. = \text{-----}$
 $S.E. \text{ RUN} = \text{-----}$
 $P.C. \text{ STA.} = 349+73.12$
 $P.T. \text{ STA.} = 365+71.44$

- D-6 CABLE MED BAR #1



REVISIONS	
NAME	DATE

ILLINOIS DEPARTMENT OF TRANSPORTATION
**PLAN SHEET
 LOCATION A**
 FAI 55 (I-55)
 SECTION D-6 CABLE MED BAR #1
 SANGAMON COUNTY

SCALE: VERT. _____
 HORIZ. _____

DATE _____ DRAWN BY _____
 CHECKED BY _____

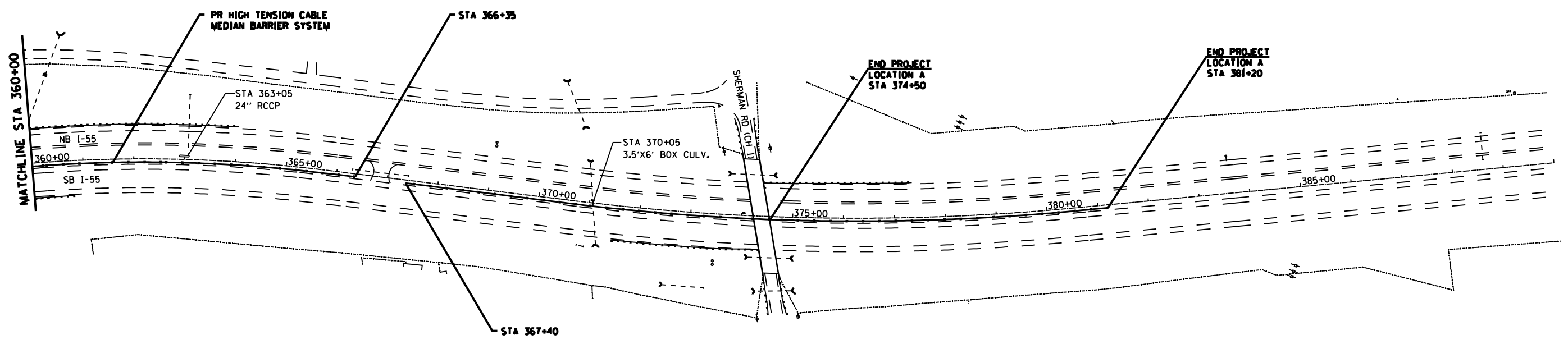
PLOT DATE: 12/02/2009
 FILE NAME: c:\projects\48282\barrier\locat\locat100.dgn
 PLOT SCALE: 211/847 / IN.
 USER NAME: foughlme1

F.A.I. RTE.	SECTION	COUNTY	TOTAL SHEETS	SHEET NO.
55		SANGAMON	20	14

STA.	TO STA.

FED. ROAD DIST. NO. ILLINOIS FED. AID PROJECT
 * - D-6 CABLE MED BAR #1

EXIST. CURVE 775
 PI STA. = 375+64.26
 $\Delta = 12^\circ 24' 41''$ (LT)
 $D = 1^\circ 16' 06''$
 $R = 4,517.44'$
 $T = 491.20'$
 $L = 978.56'$
 $E = 26.63'$
 $e = \text{-----}$
 $T.R. = \text{-----}$
 $S.E. \text{ RUN} = \text{-----}$
 $P.C. \text{ STA.} = 370+73.06$
 $P.T. \text{ STA.} = 380+51.62$



PLOT DATE : 12/02/2009
 FILE NAME : c:\projects\48282\barrier\locas\plan100.dgn
 PLOT SCALE : 21/16" = 1' IN.
 USER NAME : fough1001

REVISIONS	
NAME	DATE

ILLINOIS DEPARTMENT OF TRANSPORTATION
PLAN SHEET
LOCATION A
FAI 55 (I-55)
SECTION D-6 CABLE MED BAR #1
SANGAMON COUNTY

SCALE: VERT. _____
 HORIZ. _____
 DATE _____

DRAWN BY _____
 CHECKED BY _____

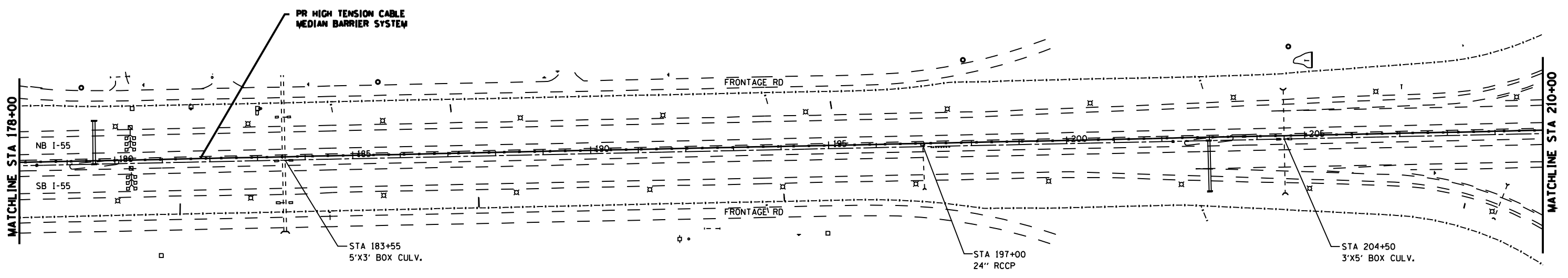
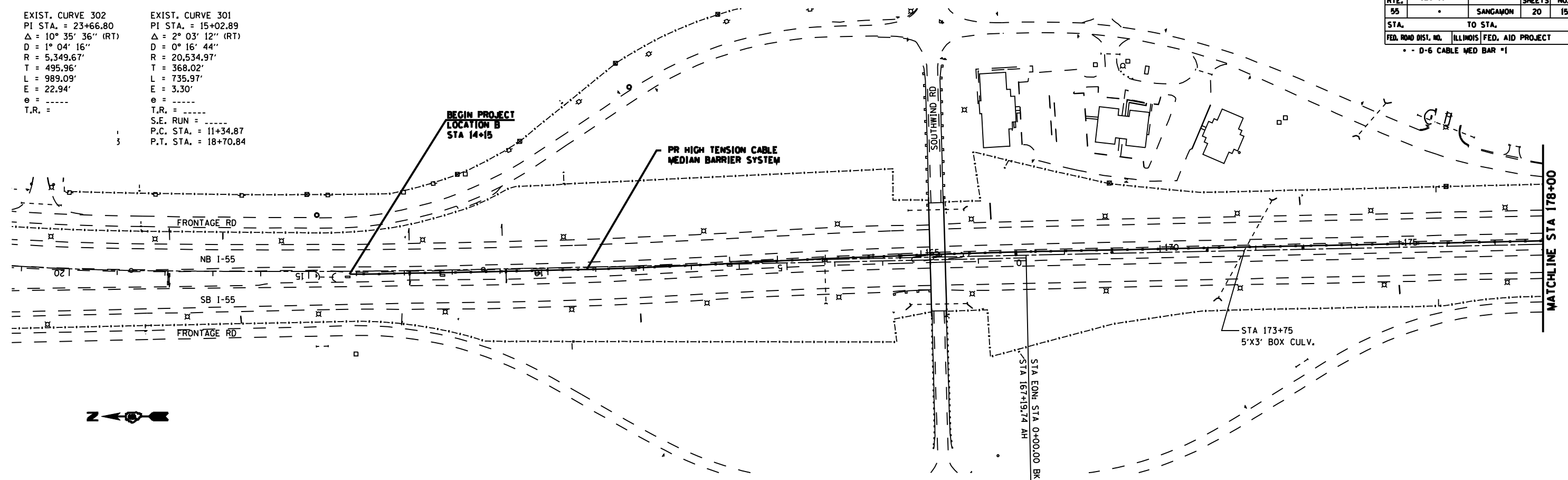
F.A.I. RTE.	SECTION	COUNTY	TOTAL SHEETS	SHEET NO.
55		SANGAMON	20	15
STA.		TO STA.		
FED. ROAD DIST. NO.		ILLINOIS FED. AID PROJECT		

• - D-6 CABLE MED BAR #1

EXIST. CURVE 302
 PI STA. = 23+66.80
 $\Delta = 10^\circ 35' 36''$ (RT)
 D = 1° 04' 16"
 R = 5,349.67'
 T = 495.96'
 L = 989.09'
 E = 22.94'
 e = ----
 T.R. =

EXIST. CURVE 301
 PI STA. = 15+02.89
 $\Delta = 2^\circ 03' 12''$ (RT)
 D = 0° 16' 44"
 R = 20,534.97'
 T = 368.02'
 L = 735.97'
 E = 3.30'
 e = ----
 T.R. =

S.E. RUN = ----
 P.C. STA. = 11+34.87
 P.T. STA. = 18+70.84



REVISIONS	
NAME	DATE

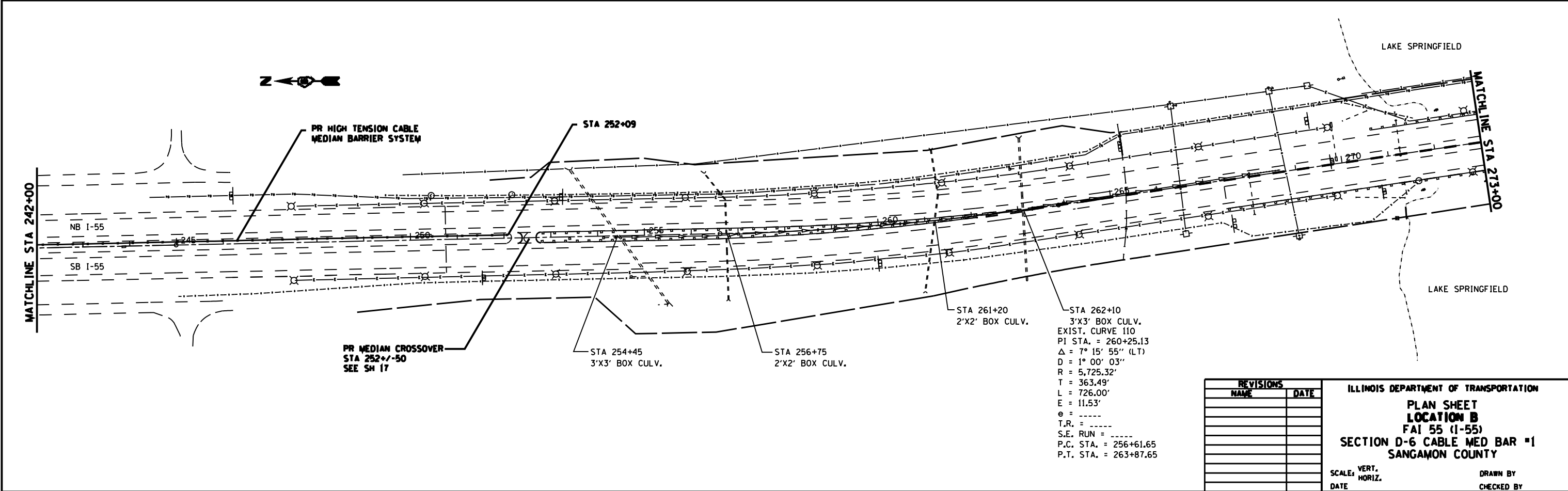
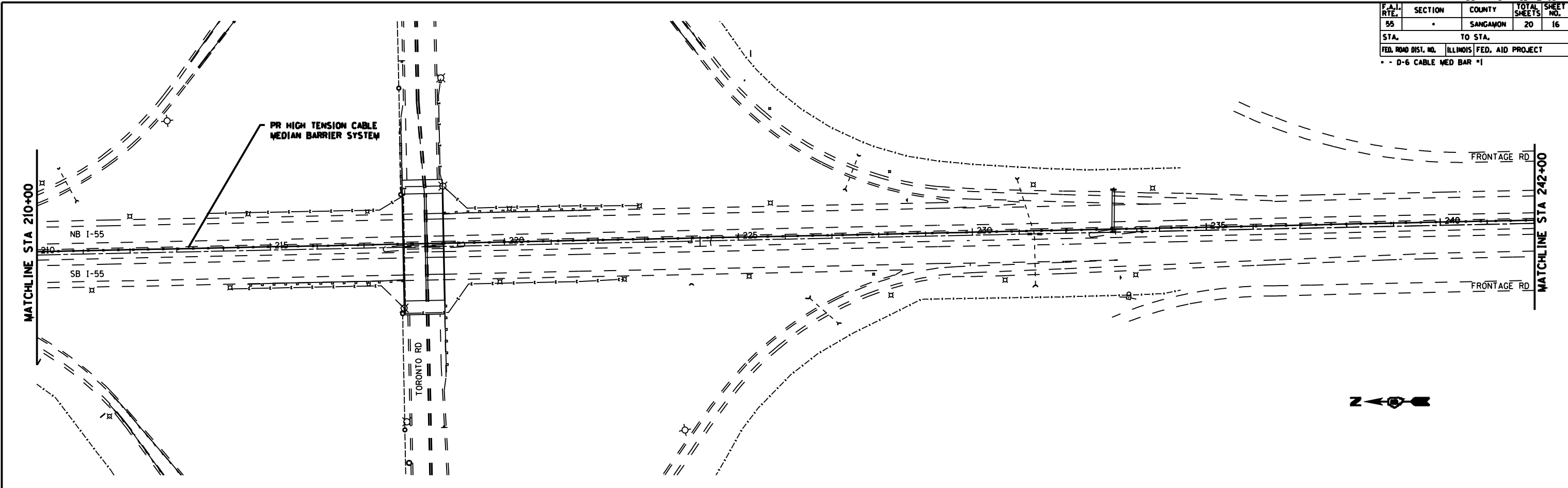
ILLINOIS DEPARTMENT OF TRANSPORTATION
PLAN SHEET
LOCATION B
 FAI 55 (I-55)
 SECTION D-6 CABLE MED BAR #1
 SANGAMON COUNTY

SCALE: VERT. _____
 HORIZ. _____
 DATE _____

DRAWN BY _____
 CHECKED BY _____

PLOT DATE : 12/02/2009
 FILE NAME : c:\projects\48282\barrier\locb\subplan183.dgn
 PLOT SCALE : 21/17847 / IN
 USER NAME : laughlin1

CONTRACT NO. 72A10				
F.A.I. RTE.	SECTION	COUNTY	TOTAL SHEETS	SHEET NO.
55		SANGAMON	20	16
STA.		TO STA.		
FED. ROAD DIST. NO.	ILLINOIS	FED. AID PROJECT		
* - D-6 CABLE MED BAR #1				



PR MEDIAN CROSSOVER
STA 252+/-50
SEE SH 17

STA 254+45
3'X3' BOX CULV.

STA 256+75
2'X2' BOX CULV.

STA 261+20
2'X2' BOX CULV.

STA 262+10
3'X3' BOX CULV.
EXIST. CURVE 110
PI STA. = 260+25.13
 $\Delta = 7^\circ 15' 55''$ (LT)
D = 1° 00' 03"
R = 5,725.32'
T = 363.49'
L = 726.00'
E = 11.53'
e = ----
T.R. = ----
S.E. RUN = ----
P.C. STA. = 256+61.65
P.T. STA. = 263+87.65

REVISIONS	
NAME	DATE

ILLINOIS DEPARTMENT OF TRANSPORTATION
**PLAN SHEET
LOCATION B**
FAI 55 (I-55)
SECTION D-6 CABLE MED BAR #1
SANGAMON COUNTY

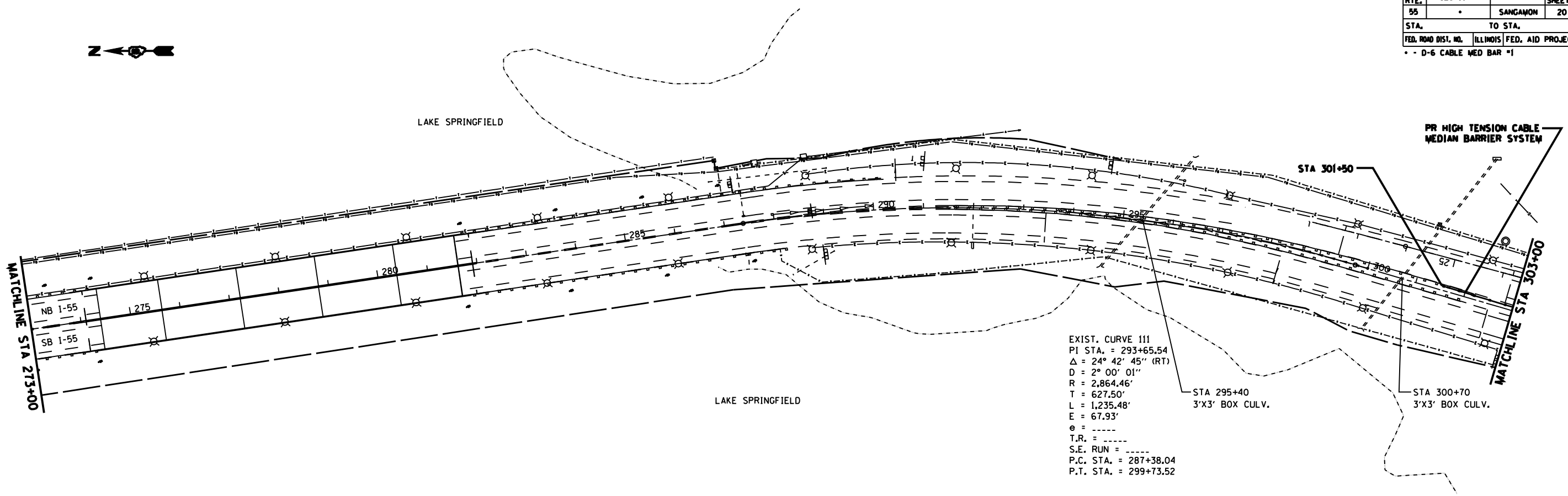
SCALE: VERT. _____
HORIZ. _____

DATE _____ DRAWN BY _____
CHECKED BY _____

PLOT DATE: 12/02/2009
FILE NAME: c:\p\projects\4825282\barrier\barrier.dwg
PLOT SCALE: 21/17847 / IN.
USER NAME: laughlinr1

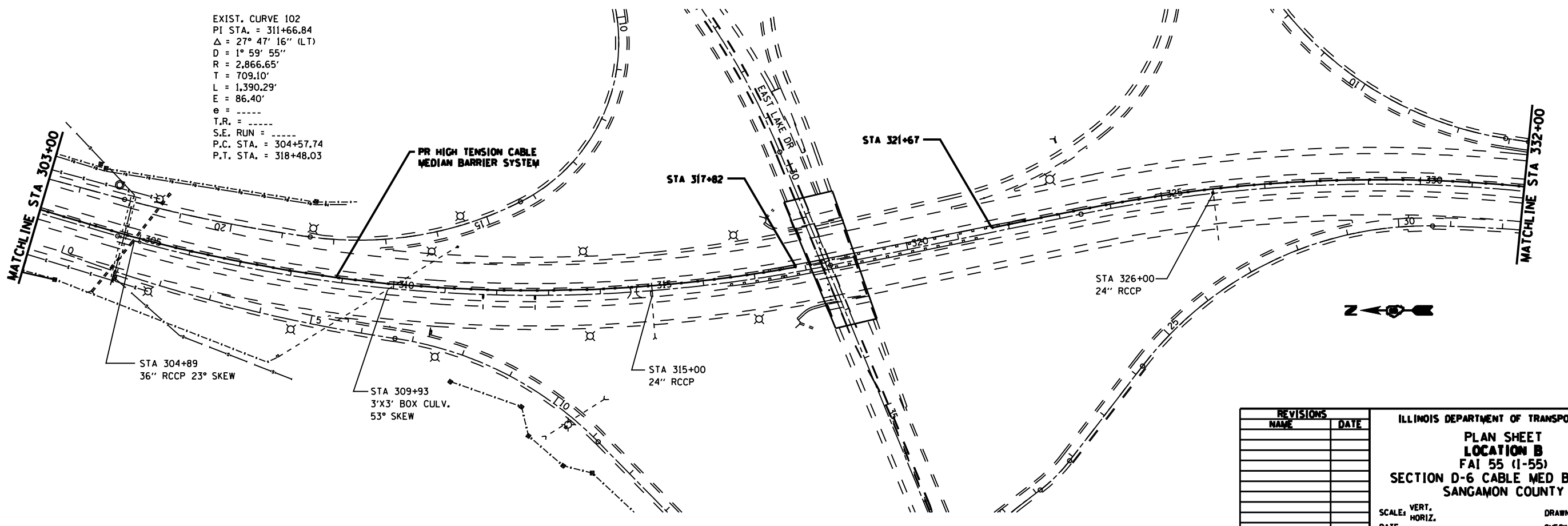
F.A.I. RTE.	SECTION	COUNTY	TOTAL SHEETS	SHEET NO.
55		SANGAMON	20	17

STA. TO STA.
 FED. ROAD DIST. NO. ILLINOIS FED. AID PROJECT
 * - D-6 CABLE MED BAR #1



EXIST. CURVE 111
 PI STA. = 293+65.54
 $\Delta = 24^\circ 42' 45''$ (RT)
 $D = 2^\circ 00' 01''$
 $R = 2,864.46'$
 $T = 627.50'$
 $L = 1,235.48'$
 $E = 67.93'$
 $e = \text{-----}$
 $T.R. = \text{-----}$
 $S.E. \text{ RUN} = \text{-----}$
 $P.C. \text{ STA.} = 287+38.04$
 $P.T. \text{ STA.} = 299+73.52$

EXIST. CURVE 102
 PI STA. = 311+66.84
 $\Delta = 27^\circ 47' 16''$ (LT)
 $D = 1^\circ 59' 55''$
 $R = 2,866.65'$
 $T = 709.10'$
 $L = 1,390.29'$
 $E = 86.40'$
 $e = \text{-----}$
 $T.R. = \text{-----}$
 $S.E. \text{ RUN} = \text{-----}$
 $P.C. \text{ STA.} = 304+57.74$
 $P.T. \text{ STA.} = 318+48.03$



REVISIONS	
NAME	DATE

ILLINOIS DEPARTMENT OF TRANSPORTATION
PLAN SHEET
LOCATION B
 FAI 55 (I-55)
 SECTION D-6 CABLE MED BAR #1
 SANGAMON COUNTY

SCALE: VERT. _____
 HORIZ. _____
 DATE _____

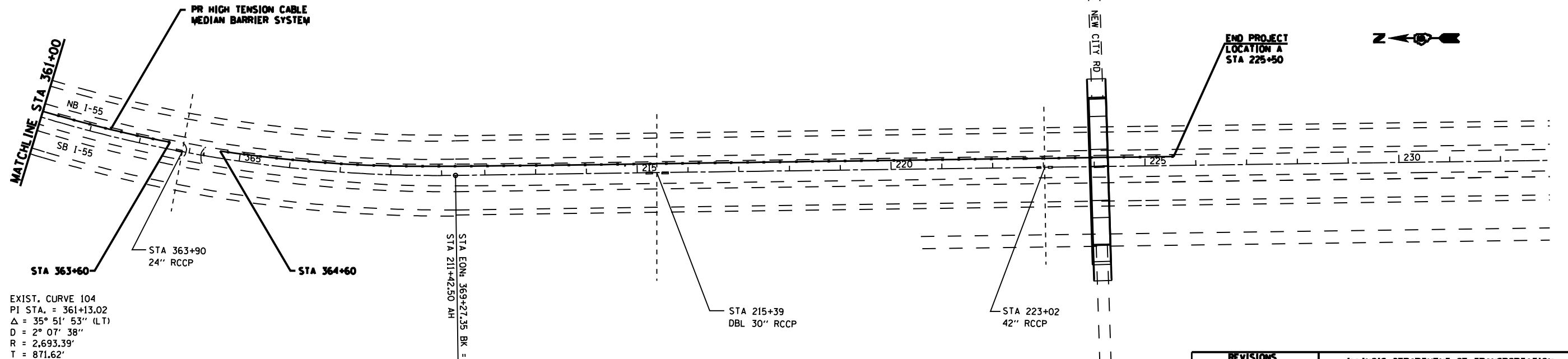
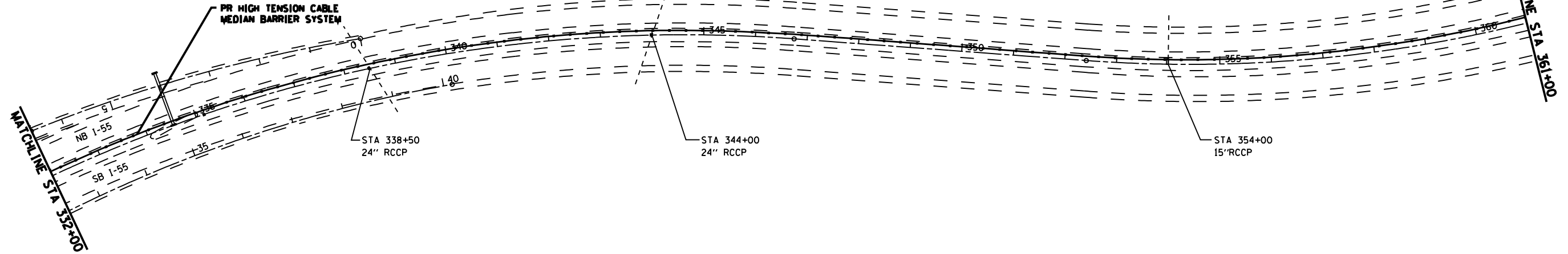
DRAWN BY _____
 CHECKED BY _____

PLOT DATE: 12/02/2009
 FILE NAME: c:\projects\48282\barrier\locb\plan17.dwg
 PLOT SCALE: 21/7847 / IN.
 USER NAME: fough17

F.A.I. RTE.	SECTION	COUNTY	TOTAL SHEETS	SHEET NO.
55		SANGAMON	20	18
STA.		TO STA.		
FED. ROAD DIST. NO.		ILLINOIS FED. AID PROJECT		

* - D-6 CABLE MED BAR #1

EXIST. CURVE 103
 PI STA. = 335+77.05
 $\Delta = 46^\circ 37' 10''$ (RT)
 $D = 1^\circ 59' 52''$
 $R = 2,867.97'$
 $T = 1,235.72'$
 $L = 2,333.56'$
 $E = 254.89'$
 $e = \text{-----}$
 $T.R. = \text{-----}$
 $S.E. \text{ RUN} = \text{-----}$
 $P.C. \text{ STA.} = 323+41.33$
 $P.T. \text{ STA.} = 346+74.89$



EXIST. CURVE 104
 PI STA. = 361+13.02
 $\Delta = 35^\circ 51' 53''$ (LT)
 $D = 2^\circ 07' 38''$
 $R = 2,693.39'$
 $T = 871.62'$
 $L = 1,685.95'$
 $E = 137.52'$
 $e = \text{-----}$
 $T.R. = \text{-----}$
 $S.E. \text{ RUN} = \text{-----}$
 $P.C. \text{ STA.} = 352+41.39$
 $P.T. \text{ STA.} = 369+27.35$

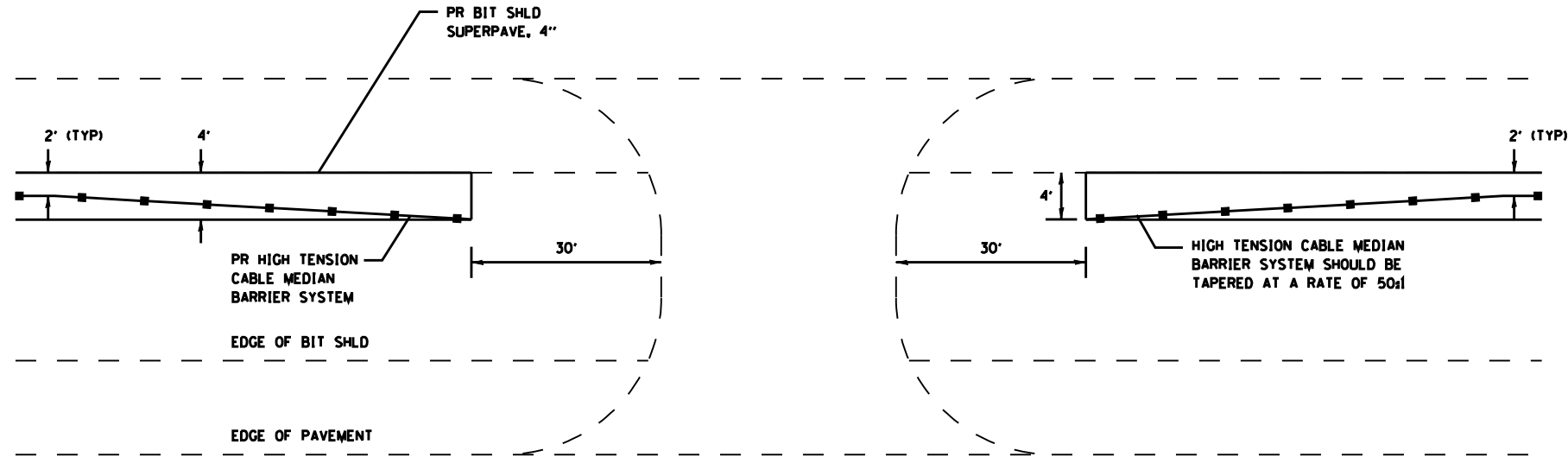
PLOT DATE = 12/02/2009
 FILE NAME = c:\projects\48282\barrier\loc_b\plan18.dgn
 PLOT SCALE = 211.7817 / IN.
 USER NAME = faugh1@i

REVISIONS	
NAME	DATE

ILLINOIS DEPARTMENT OF TRANSPORTATION
PLAN SHEET
LOCATION B
 FAI 55 (I-55)
 SECTION D-6 CABLE MED BAR #1
 SANGAMON COUNTY

SCALE: VERT. _____
 HORIZ. _____
 DATE _____
 DRAWN BY _____
 CHECKED BY _____

F.A.I. RTE.	SECTION	COUNTY	TOTAL SHEETS	SHEET NO.
55		SANGAMON	20	19
STA.		TO STA.		
FED. ROAD DIST. NO.	ILLINOIS	FED. AID PROJECT		
* - D-6 CABLE MED BAR #1				

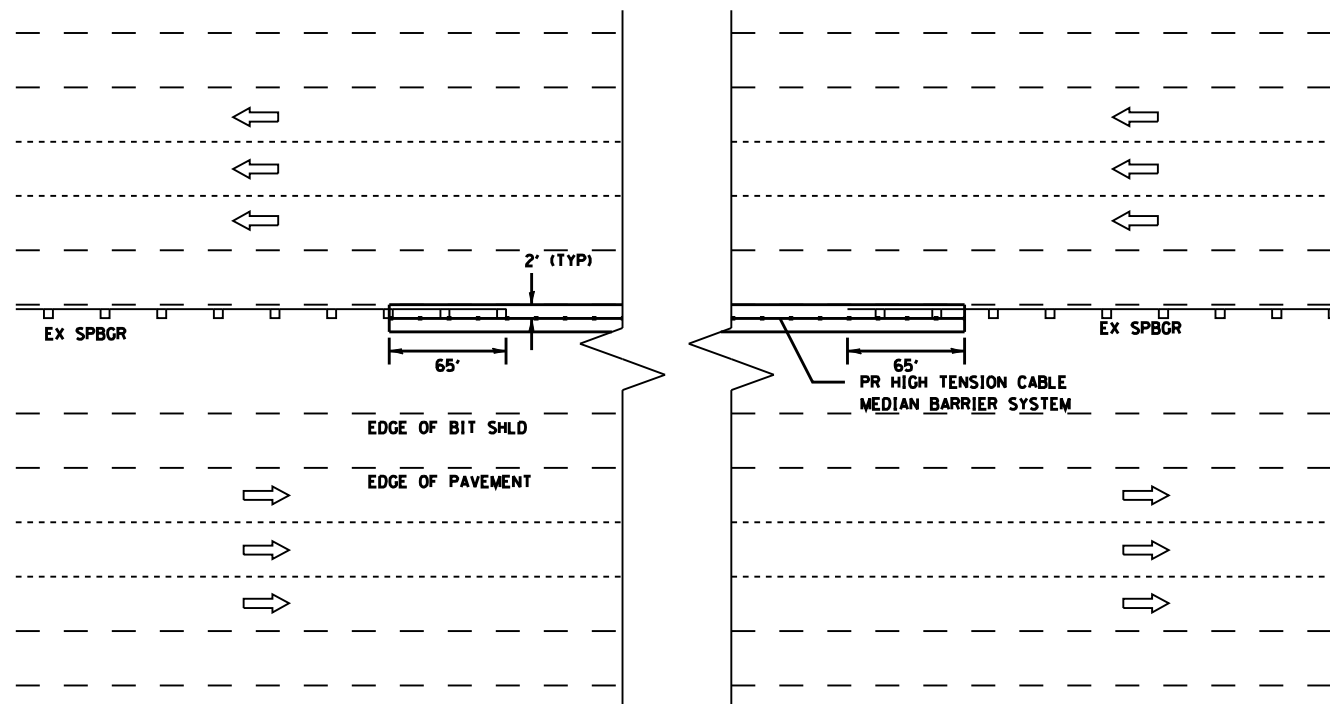


NOTES:

1. POSTS SHALL BE DRIVEN, IN ACCORDANCE WITH MANUFACTURER'S SPECIFICATIONS.
2. POST SPACING MAY BE ALTERED TO AVOID DRAINAGE STRUCTURES OR OTHER OBSTACLES.

EMERGENCY MEDIAN CROSSOVER

NOT TO SCALE



ADJACENT TO GUARDRAIL

HIGH TENSION CABLE BARRIER SYSTEM

LOCATION	LENGTH (FOOT)
LOCATION A	
STA 259+84 TO STA 288+00	2,816
STA 292+00 TO STA 340+30	4,830
STA 340+39 TO STA 341+96	157
STA 348+90 TO STA 366+35	1,745
STA 367+40 TO STA 381+20	1,380
LOCATION B	
STA 14+15 TO STA 0+00	1,415
STA 167+20 TO STA 252+09	8,489
STA 301+50 TO STA 317+82	1,632
STA 321+67 TO STA 363+60	4,193
STA 364+60 TO STA 369+27	467
STA 211+42 TO STA 225+50	1,408
TOTAL	28,532

BITUMINOUS SHOULDERS SUPERPAVE 4"

LOCATION	LENGTH (FOOT)	WIDTH (FOOT)	AREA (SQ YD)
LOCATION A			
STA 259+84 TO STA 288+00	2,816	4.0	1,251.56
STA 292+00 TO STA 340+30	4,830	4.0	2,146.67
STA 340+39 TO STA 341+96	157	4.0	69.78
STA 348+90 TO STA 366+35	1,745	4.0	775.56
STA 367+40 TO STA 381+20	1,380	4.0	613.33
LOCATION B			
STA 14+15 TO STA 0+00	1,415	4.0	628.89
STA 167+20 TO STA 252+09	8,489	4.0	3,772.89
STA 301+50 TO STA 317+82	1,632	4.0	725.33
STA 321+67 TO STA 363+60	4,193	4.0	1,863.56
STA 364+60 TO STA 369+27	467	4.0	207.56
STA 211+42 TO STA 225+50	1,408	4.0	625.78
MEDIAN CROSSOVER, STA 252+50			84.54
TOTAL			12,765.45

AGGREGATE BASE COURSE, TYPE A

LOCATION	AREA (SQ FT)	AVE DEPTH (FOOT)	QUANTITY (TONS)
LOCATION B			
MEDIAN CROSSOVER, STA 252+20	84.54	0.33	19.06
TOTAL			

REVISIONS	
NAME	DATE

ILLINOIS DEPARTMENT OF TRANSPORTATION
DETAILS

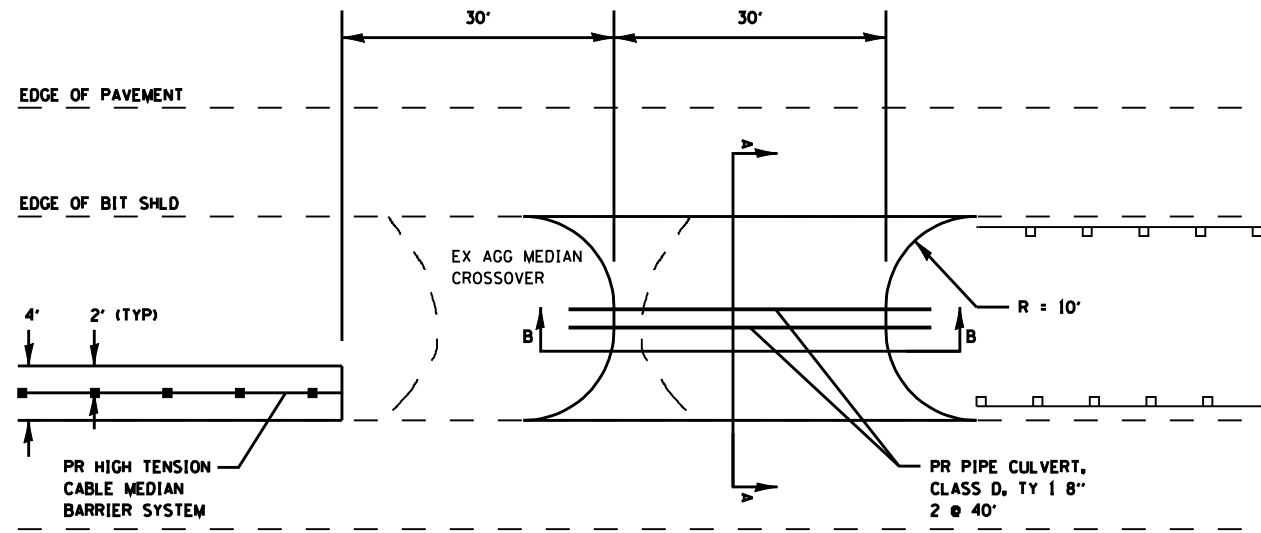
FAI 55 (1-55)
SECTION D-6 CABLE MED BAR #1
SANGAMON COUNTY

SCALE: VERT. _____
HORIZ. _____
DATE _____ DRAWN BY _____
CHECKED BY _____

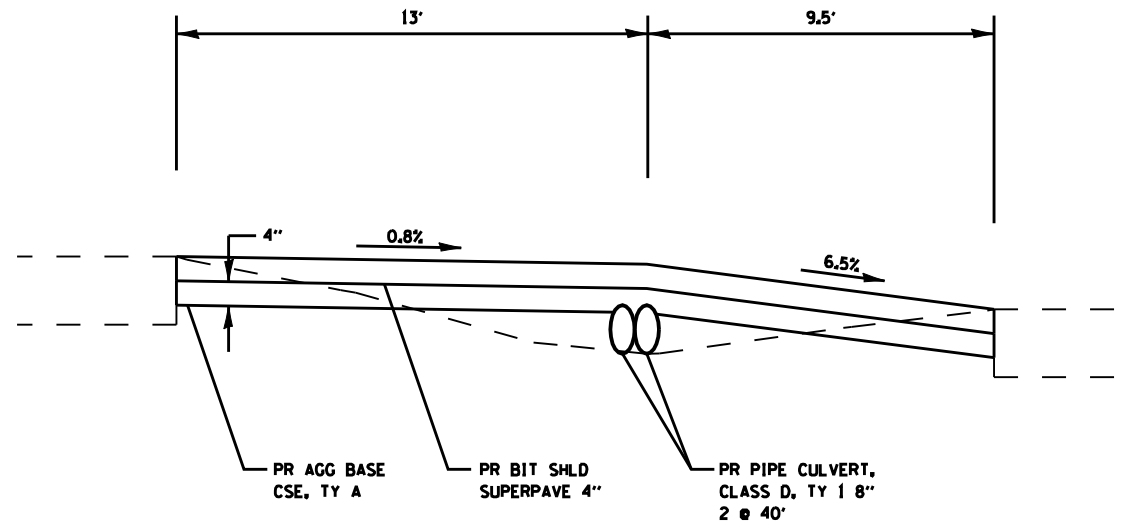
NOT TO SCALE

F.A.I. RTE.	SECTION	COUNTY	TOTAL SHEETS	SHEET NO.
55		SANGAMON	20	20
STA.		TO STA.		
FED. ROAD DIST. NO.		ILLINOIS FED. AID PROJECT		

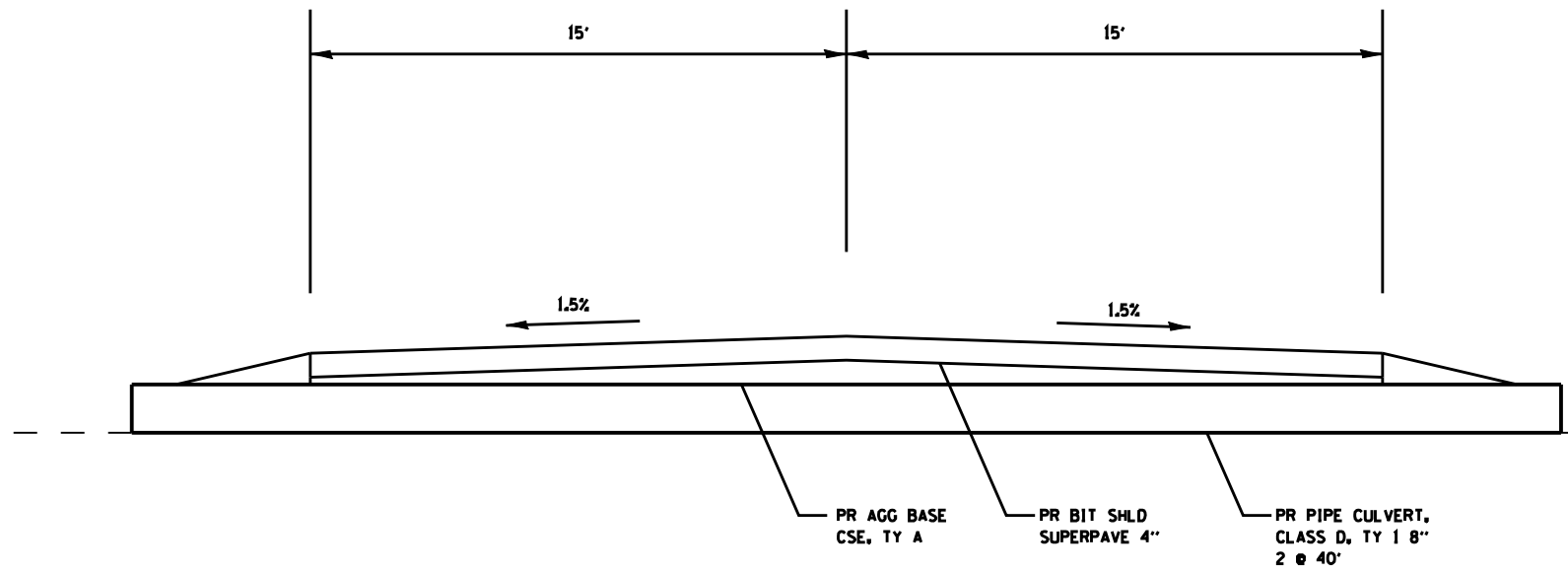
* - D-6 CABLE MED BAR #1



NEW MEDIAN CROSSOVER
STATION 252+50



SECTION A-A



SECTION B-B

NOT TO SCALE

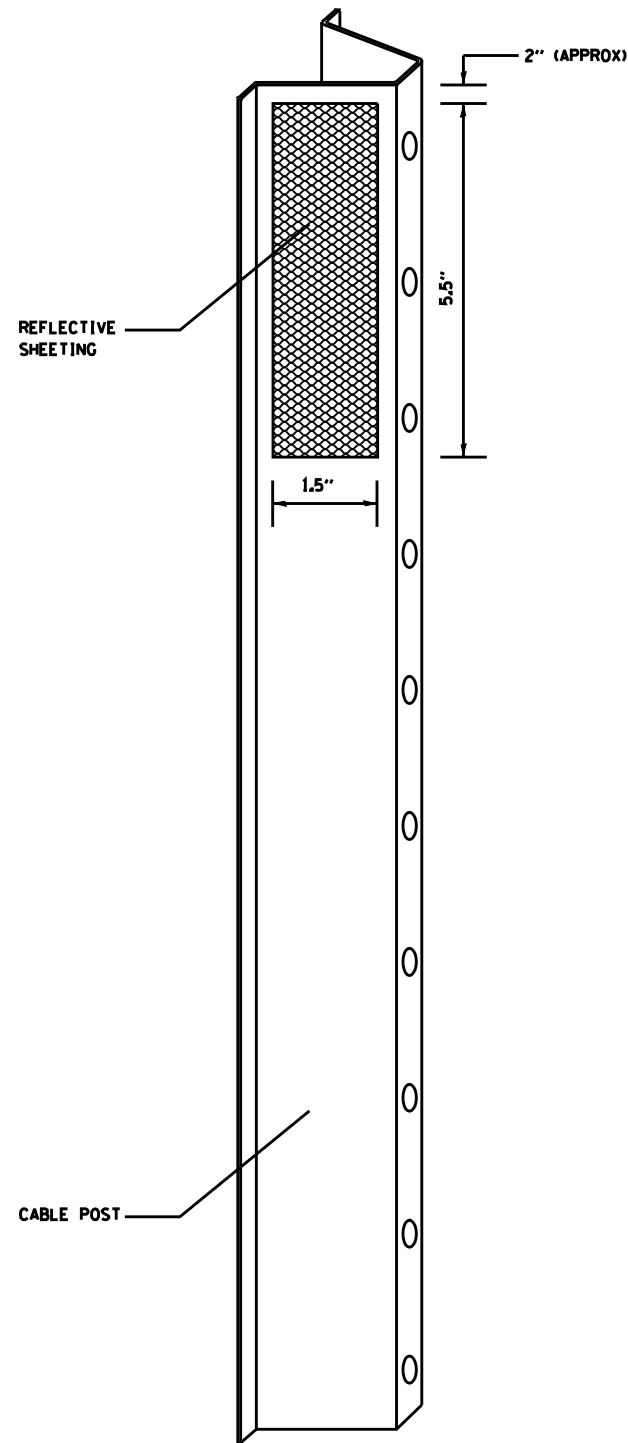
REVISIONS	
NAME	DATE

ILLINOIS DEPARTMENT OF TRANSPORTATION
MEDIAN CROSSOVER DETAILS
 FAI 55 (1-55)
 SECTION D-6 CABLE MED BAR #1
 SANGAMON COUNTY

SCALE: VERT. _____
 HORIZ. _____
 DATE _____
 DRAWN BY _____
 CHECKED BY _____

PLOT DATE : 12/02/2009
 FILE NAME : c:\projects\4825282\barrier\crossover\detail.dwg
 PLOT SCALE : 21/17847 / IN.
 USER NAME : fough1001

F.A.I. RTE.	SECTION	COUNTY	TOTAL SHEETS	SHEET NO.
55		SANGAMON	20	20A
STA.		TO STA.		
FED. ROAD DIST. NO.		ILLINOIS	FED. AID PROJECT	



NOTES:

MATERIAL: THE MATERIAL SHALL BE IN ACCORDANCE WITH SECTION 1090 AND 1091 OF THE STANDARD SPECIFICATIONS.

CONSTRUCTION REQUIREMENTS: THE REFLECTIVE SHEETING SHALL BE INSTALLED DIRECTLY ON THE CABLE POSTS. THE REFLECTIVE SHEETING SHALL BE INSTALLED AS SHOWN IN THE PLANS, ON EVERY 6TH POST. THE SURFACE OF THE POST SHALL BE CLEANED OF ALL CONTAMINANTS PRIOR TO THE INSTALLATION OF THE REFLECTIVE SHEETING. THE SURFACE SHALL BE CLEANED USING A 5-8 PERCENT PHOSPHORIC ACID SOLUTION AND RINSED WITH CLEAN WATER OR AS RECOMMENDED BY THE MANUFACTURER OF THE REFLECTIVE SHEETING AND AS APPROVED BY THE ENGINEER.

BASIS OF PAYMENT: THIS WORK WILL BE PAID FOR AT THE CONTRACT UNIT PRICE EACH FOR CABLE GUARD MARKER.

CABLE GUARD MARKER	QUANTITY
LOCATION	(EACH)
LOCATION A	
STA 259+84 TO STA 288+00	72
STA 292+00 TO STA 340+30	124
STA 340+39 TO STA 341+96	4
STA 348+90 TO STA 366+35	45
STA 367+40 TO STA 381+20	35
LOCATION B	
STA 14+15 TO STA 0+00	36
STA 167+20 TO STA 252+09	218
STA 301+50 TO STA 317+82	42
STA 321+67 TO STA 363+60	108
STA 364+60 TO STA 369+27	12
STA 211+42 TO STA 225+50	36
	732

PLOT DATE : 2/14/2006
 FILE NAME : C:\Documents and Settings\user\Local Settings\Temporary Internet Files\10.0.0.0\72a10\reflector.dwg
 PLOT SCALE : 1/8" = 1'-0"
 USER NAME : laughlin

REVISIONS		ILLINOIS DEPARTMENT OF TRANSPORTATION CABLE GUARD MARKER DETAIL
NAME	DATE	
		FAI 55 (1-55) SECTION D-6 CABLE MED BAR #1 SANGAMON COUNTY SCALE: VERT. _____ HORIZ. _____ DATE _____
DRAWN BY _____		CHECKED BY _____