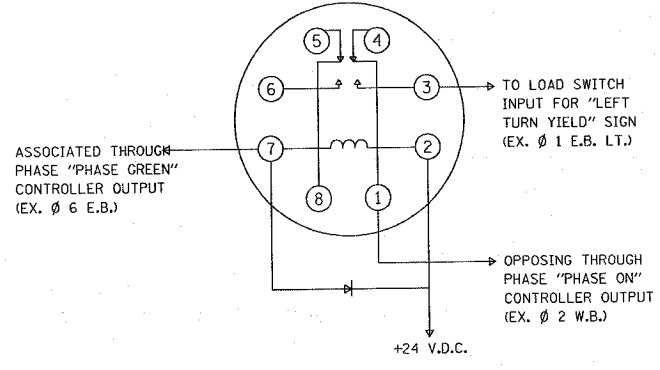


CONTRACT NO. 76951				
F.A. RTE.	SECTION	COUNTY	TOTAL SHEETS	SHEET NO.
*	**	***	13	13
STA.		TO STA.		
FED. ROAD DIST. NO.	ILLINOIS	FED. AID PROJECT		

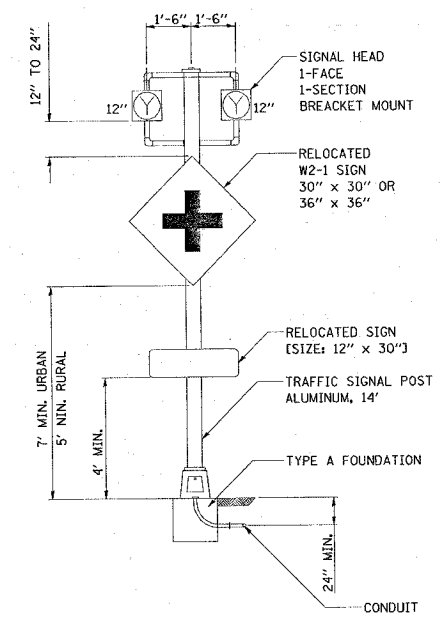
- Various
- Dist. 8 TS Modifications 2006-1
- St. Clair & Madison



ILLUMINATED "LEFT TURN YIELD" SIGN  
TYPICAL SIGN CONTROL INSTALLATION

- NOTES
1. RELAY SHALL BE POTTER & BRUMFIELD KRPA11DY OR EQUIVALENT (24 V.D.C. COIL)
  2. DIODE SHALL BE 1N4007 OR EQUIVALENT.
  3. RELAY SOCKET SHALL BE MOUNTED ON A PANEL OF SHEET ALUMINUM.
  4. THIS DETAIL IS TYPICAL. EACH SIGN WILL REQUIRE A SEPARATE RELAY AND CONNECTIONS WILL VARY BASED ON INTERSECTION PHASING.
  5. THE 120 V.A.C. CONTROL VOLTAGE SUPPLIED TO THE SIGN SHALL BE SWITCHED BY A STANDARD NEMA SOLID STATE LOAD SWITCH. A SINGLE LOAD SWITCH MAY BE UTILIZED FOR THREE LIGHTED SIGNS.
  6. THE CONTROL VOLTAGE SHALL BE MONITORED BY THE EXISTING CONFLICT MONITOR LOCATED IN THE CONTROLLER CABINET.
  7. THE HOUSING OF THE ILLUMINATED SIGN SHALL BE UNPAINTED ALUMINUM.

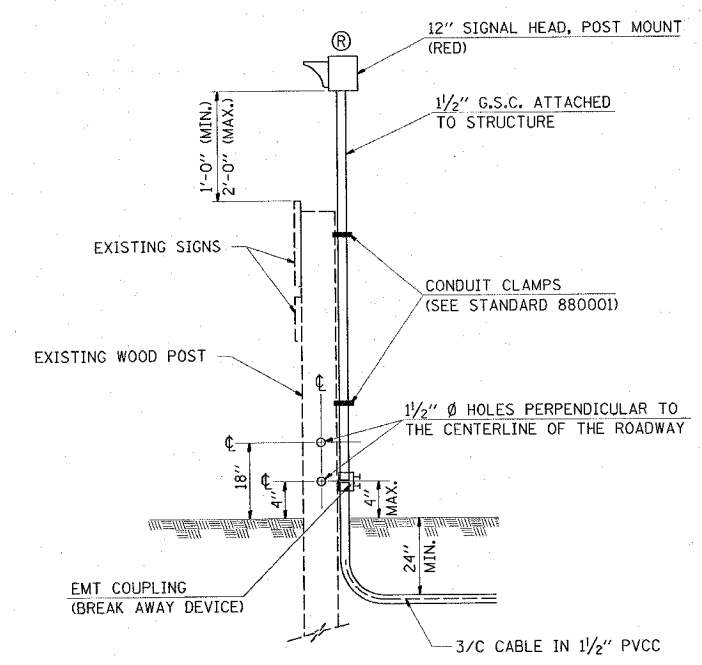
LOCATIONS: (1) N. GREENMOUNT RD. @ LEBANON AVE.  
(2) IL RTE. 111 @ BUNKUM RD.



DETAIL-A

SIDE BY SIDE POST MOUNTED  
FLASHING BEACONS  
NOT TO SCALE

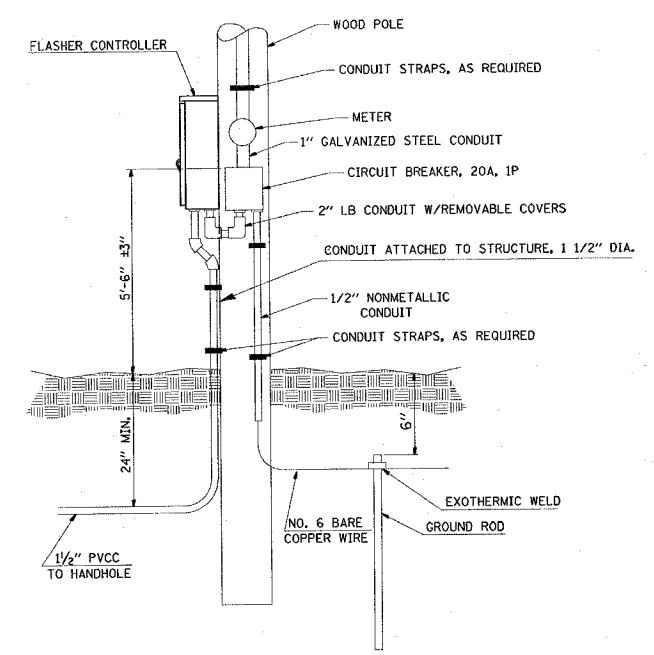
LOCATION: IL RTE. 163 @ MINE HAUL RD./ZINGG RD.



DETAIL-C

POST MOUNTED FLASHING BEACON  
ON EXISTING POST

LOCATION: IL RTE. 143 @ WANDA RD./BIRCH RD.



DETAIL-B

SERVICE INSTALLATION TYPE A  
& FLASHER CONTROLLER

LOCATION: IL RTE. 163 @ MINE HAUL RD./ZINGG RD.

PLOT DATE = 11/16/2005  
FILE NAME = c:\pms\jesta\edg\0205\electrical\sp1n0205.dgn  
REFERENCE = #REF#

REVISIONS	
NAME	DATE

ILLINOIS DEPARTMENT OF TRANSPORTATION  
**DETAILS**  
FAP ROUTE VARIOUS  
SECTION: DIST. 8 TS MODIFICATIONS 2006-1  
COUNTIES: ST. CLAIR & MADISON  
SCALE: VERT. \_\_\_\_\_  
DATE: \_\_\_\_\_ HORIZ. \_\_\_\_\_  
DRAWN BY: \_\_\_\_\_  
CHECKED BY: \_\_\_\_\_