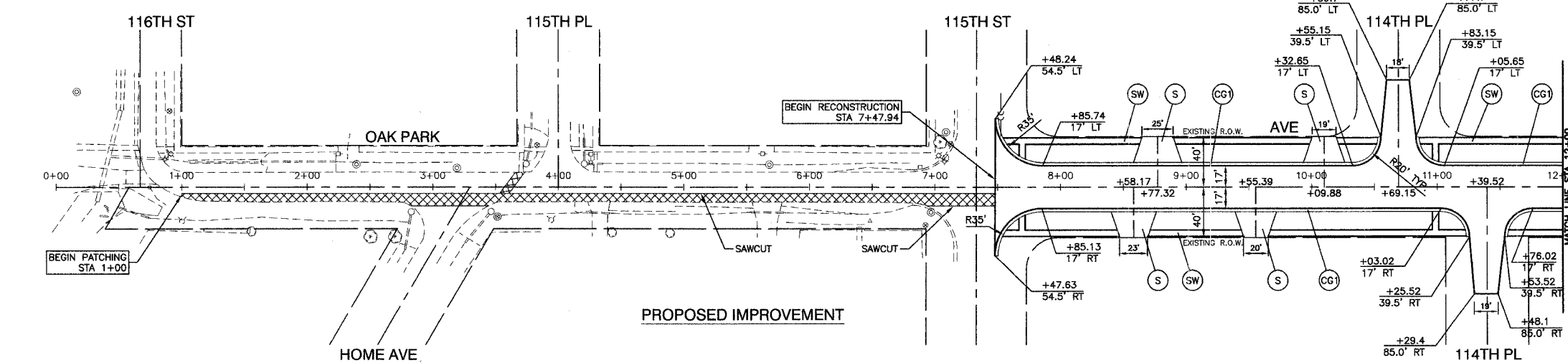
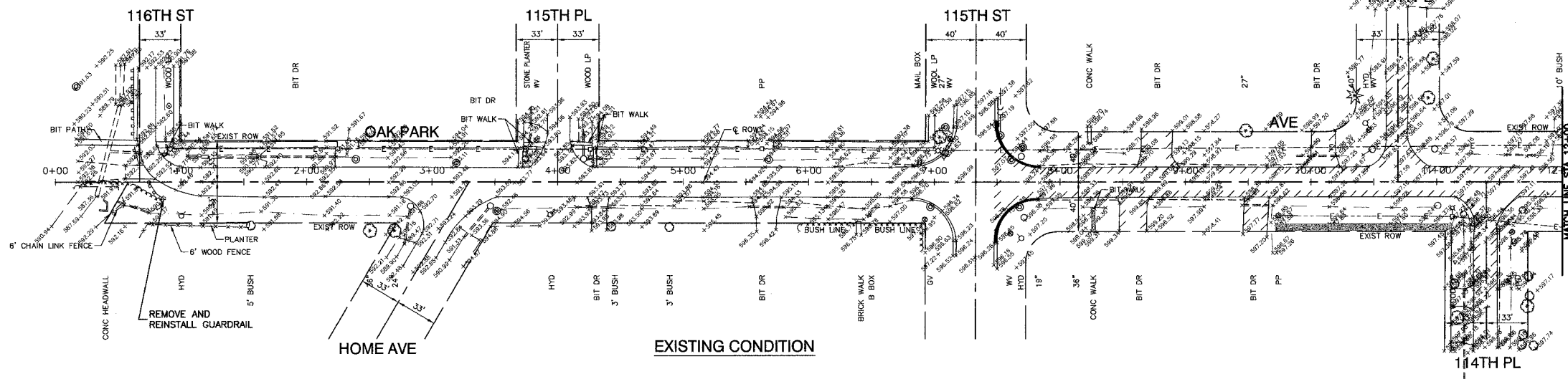


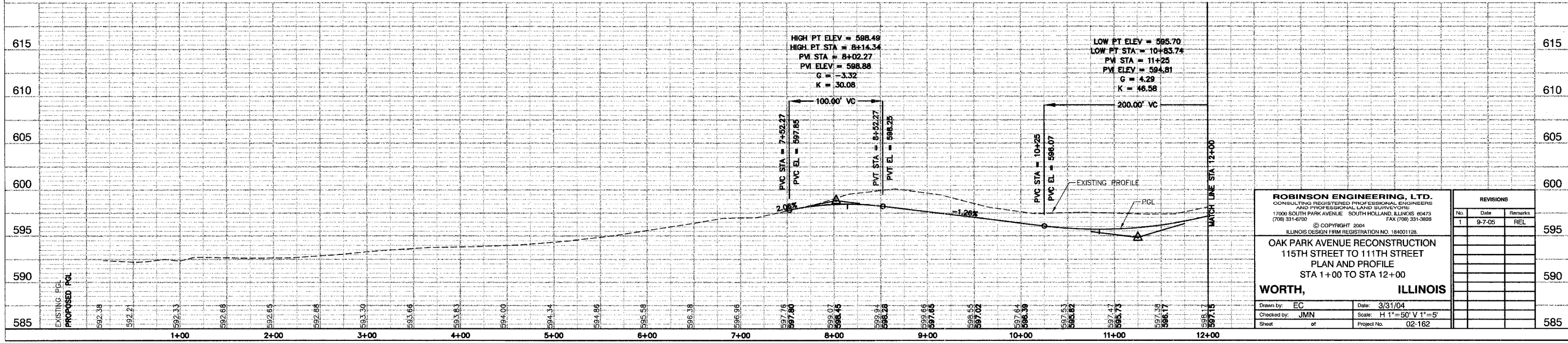
FAXL NO.	SECTION	COUNTY	TOTAL SHEETS	SHEET NO.
2955	02-00049-00-PV	COOK	45	10
STA.	TO STA.			
FED. ROAD DIST. NO.	ILLINOIS	FED. AID PROJECT		

Contact 83819



- LEGEND**
- COMBINATION CURB & GUTTER REMOVAL
 - PAVEMENT AND DRIVEWAY REMOVAL
 - SIDEWALK REMOVAL
 - CLASS D PATCHES
 - BITUMINOUS DRIVEWAY - 2" BITUMINOUS SURFACE COURSE, SUPERPAVE, MIX "C", N50 & 4" BITUMINOUS BASE COURSE, SUPERPAVE
 - COMBINATION CURB & GUTTER TYPE B-6.24
 - COMBINATION CURB & GUTTER TYPE B-6.12
 - P.C.C. SIDEWALK, 5"

BENCH MARK:
SPIKE NAIL IN SOUTH FACE OF WOOD LIGHT POLE ON NORTH SIDE OF 115TH ST BETWEEN RESIDENCE #7000 AND #6928
ELEVATION=600.767



<p>ROBINSON ENGINEERING, LTD. CONSULTING REGISTERED PROFESSIONAL ENGINEERS AND PROFESSIONAL LAND SURVEYORS 17000 SOUTH PARK AVENUE SOUTH HOLLAND, ILLINOIS 60473 (708) 331-6700 FAX (708) 331-3828</p> <p>© COPYRIGHT 2004 ILLINOIS DESIGN FIRM REGISTRATION NO. 184001128</p>		<p>REVISIONS</p> <table border="1"> <thead> <tr> <th>No.</th> <th>Date</th> <th>Remarks</th> </tr> </thead> <tbody> <tr> <td>1</td> <td>9-7-05</td> <td>REL</td> </tr> </tbody> </table>	No.	Date	Remarks	1	9-7-05	REL
No.	Date	Remarks						
1	9-7-05	REL						
<p>OAK PARK AVENUE RECONSTRUCTION 115TH STREET TO 111TH STREET PLAN AND PROFILE STA 1+00 TO STA 12+00</p>		<p>595</p>						
<p>WORTH, ILLINOIS</p> <p>Drawn by: EC Date: 3/31/04 Checked by: JMN Scale: H 1"=50' V 1"=5' Sheet of Project No. 02-162</p>		<p>590</p>						
<p>585</p>		<p>585</p>						