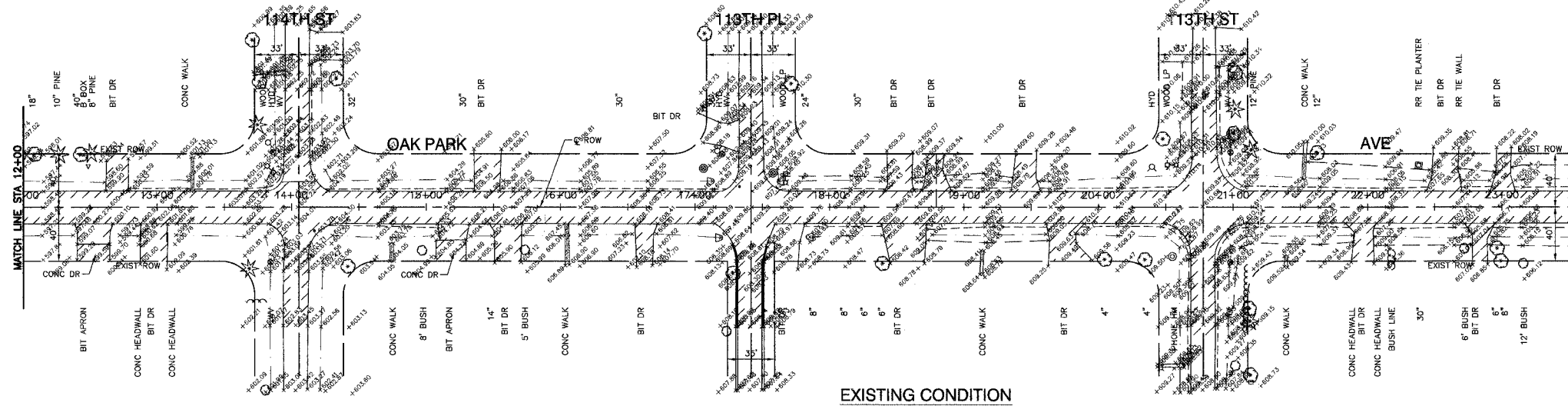


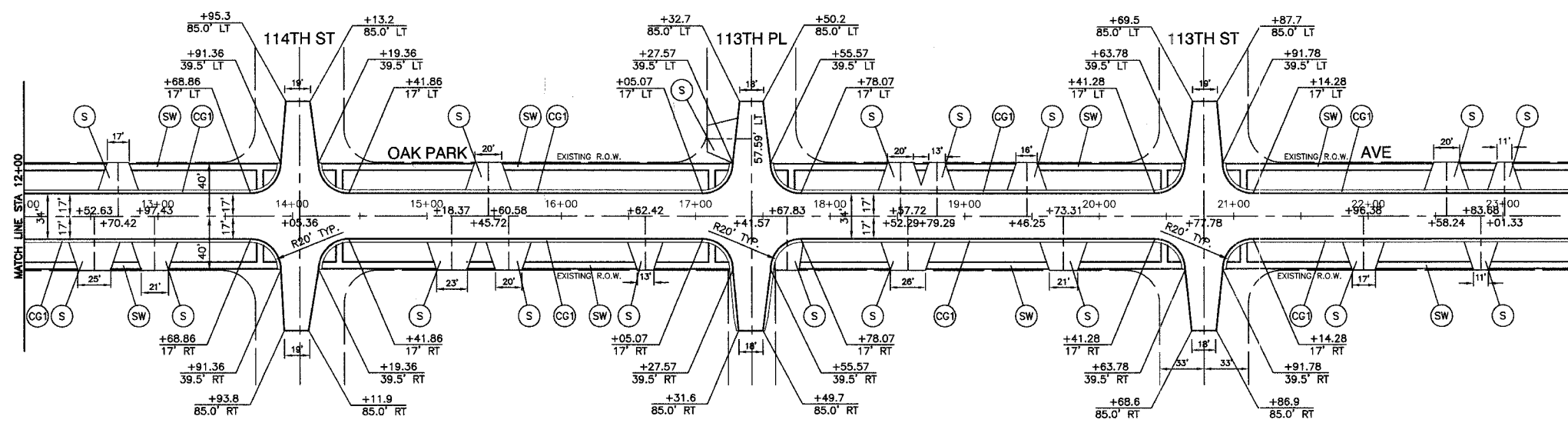
SECTION 19, TOWNSHIP 37, RANGE 13

FILE NO.	SECTION	COUNTY	TOTAL SHEETS	SHEET NO.
2955	02-00049-00-PV	COOK	45	11
STA.	TO STA.			
FED. ROAD DIST. NO. LINKS FED. AID PROJECT				

Contract 83319



EXISTING CONDITION



PROPOSED IMPROVEMENT

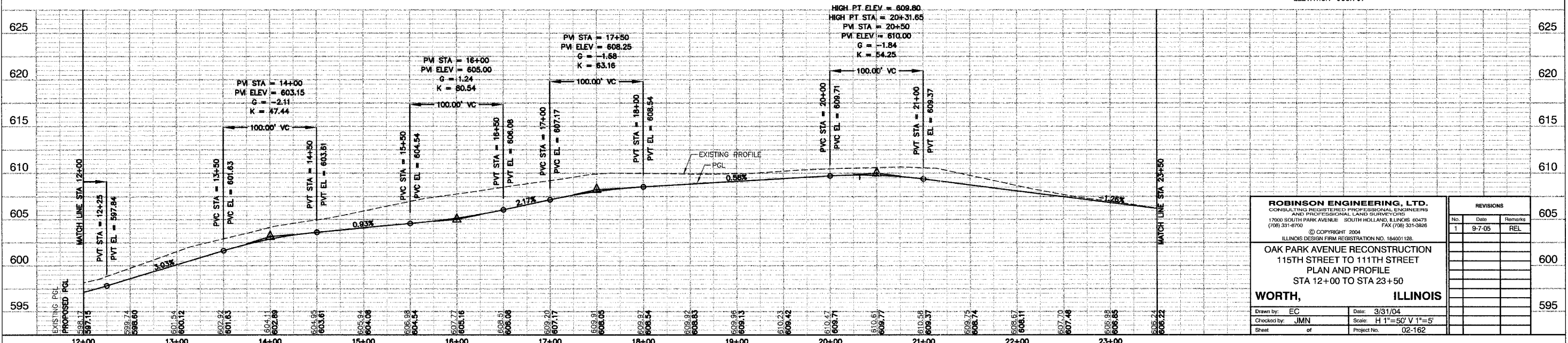


LEGEND

- COMBINATION CURB & GUTTER REMOVAL
- PAVEMENT AND DRIVEWAY REMOVAL
- SIDEWALK REMOVAL
- CLASS D PATCHES
- BITUMINOUS DRIVEWAY - 2" BITUMINOUS SURFACE COURSE, SUPERPAVE, MIX "C", N50 & 4" BITUMINOUS BASE COURSE, SUPERPAVE
- COMBINATION CURB & GUTTER TYPE B-6.24
- COMBINATION CURB & GUTTER TYPE B-6.12
- P.C.C. SIDEWALK, 5"

BENCH MARK:

SPIKE NAIL IN SOUTH FACE OF WOOD LIGHT POLE ON NORTH SIDE OF 115TH ST BETWEEN RESIDENCE #7000 AND #6928  
ELEVATION=600.767



<b>ROBINSON ENGINEERING, LTD.</b> CONSULTING REGISTERED PROFESSIONAL ENGINEERS AND PROFESSIONAL LAND SURVEYORS 17000 SOUTH PARK AVENUE SOUTH HOLLAND, ILLINOIS 60478 (708) 331-6700 FAX (708) 331-3626			REVISIONS <table border="1"> <tr> <th>No.</th> <th>Date</th> <th>Remarks</th> </tr> <tr> <td>1</td> <td>9-7-05</td> <td>REL</td> </tr> </table>			No.	Date	Remarks	1	9-7-05	REL
No.	Date	Remarks									
1	9-7-05	REL									
© COPYRIGHT 2004 ILLINOIS DESIGN FIRM REGISTRATION NO. 184001128 <b>OAK PARK AVENUE RECONSTRUCTION</b> <b>115TH STREET TO 111TH STREET</b> <b>PLAN AND PROFILE</b> <b>STA 12+00 TO STA 23+50</b> <b>WORTH, ILLINOIS</b>			605 600 595								
Drawn by: EC Checked by: JMN Sheet: of		Date: 3/31/04 Scale: H 1"=50' V 1"=5' Project No. 02-162		605 600 595							