

SECTION 19, TOWNSHIP 37, RANGE 13

| | | | | |
|---|----------------|--------|--------------|-----------|
| FILE NO. | SECTION | COUNTY | TOTAL SHEETS | SHEET NO. |
| 2955 | 02-00049-00-PV | COOK | 45 | 12 |
| STA. | TO STA. | | | |
| FED. ROAD DIST. NO. ILLINOIS FED. AID PROJECT | | | | |

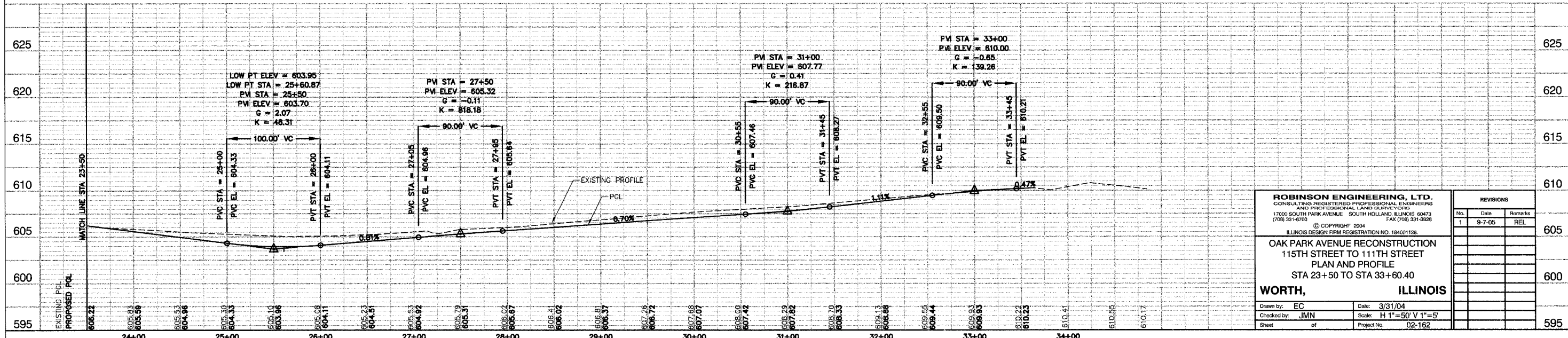
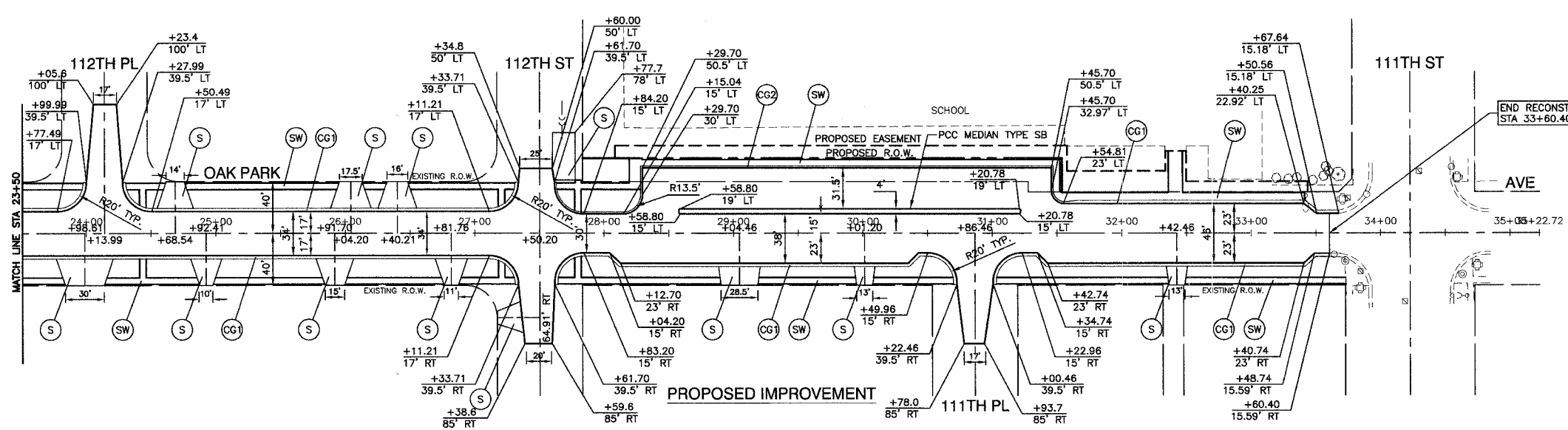
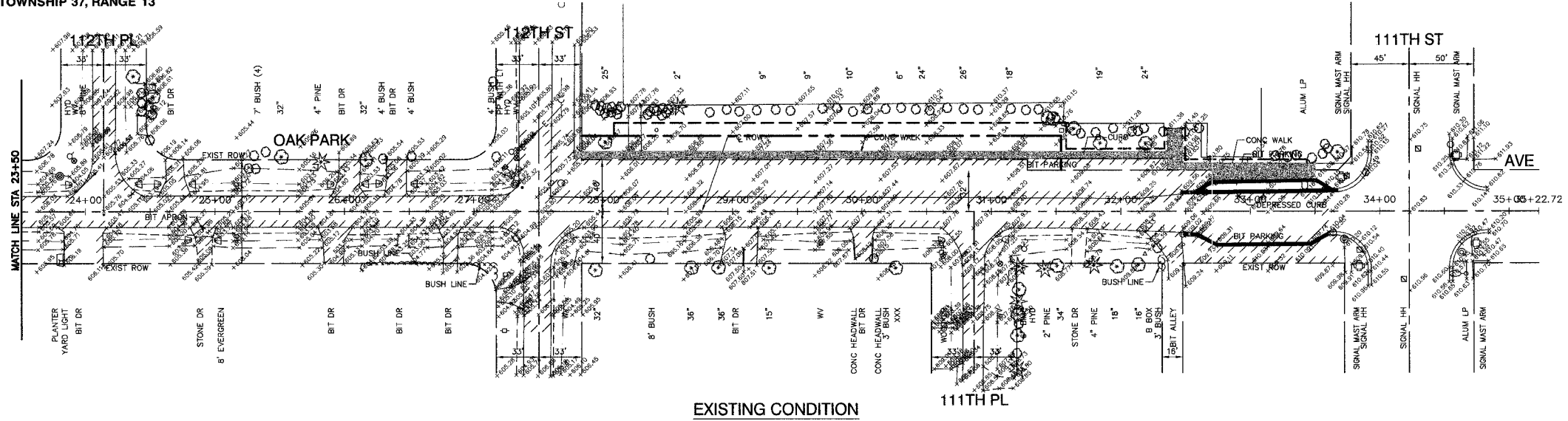
Contract 83819



LEGEND

- COMBINATION CURB & GUTTER REMOVAL
- PAVEMENT AND DRIVEWAY REMOVAL
- SIDEWALK REMOVAL
- CLASS D PATCHES
- BITUMINOUS DRIVEWAY - 2" BITUMINOUS SURFACE COURSE, SUPERPAVE, MIX "C", N50 & 4" BITUMINOUS BASE COURSE, SUPERPAVE
- COMBINATION CURB & GUTTER TYPE B-6.24
- COMBINATION CURB & GUTTER TYPE B-6.12
- P.C.C. SIDEWALK, 5"

BENCH MARK:
SPIKE NAIL IN SOUTH FACE OF WOOD LIGHT POLE ON NORTH SIDE OF 115TH ST BETWEEN RESIDENCE #7000 AND #6928
ELEVATION=600.767



| <p>ROBINSON ENGINEERING, LTD. CONSULTING REGISTERED PROFESSIONAL ENGINEERS AND PROFESSIONAL LAND SURVEYORS 17000 SOUTH PARK AVENUE SOUTH HOLLAND, ILLINOIS 60473 (708) 331-6700 FAX (708) 331-3328</p> <p>© COPYRIGHT 2004 ILLINOIS DESIGN FIRM REGISTRATION NO. 18401128</p> <p>OAK PARK AVENUE RECONSTRUCTION 115TH STREET TO 111TH STREET PLAN AND PROFILE STA 23+50 TO STA 33+60.40</p> <p>WORTH, ILLINOIS</p> | | <p>REVISIONS</p> <table border="1"> <thead> <tr> <th>No.</th> <th>Date</th> <th>Remarks</th> </tr> </thead> <tbody> <tr> <td>1</td> <td>9-7-05</td> <td>REL</td> </tr> </tbody> </table> | No. | Date | Remarks | 1 | 9-7-05 | REL |
|---|----------------------------------|--|-----|------|---------|---|--------|-----|
| No. | Date | Remarks | | | | | | |
| 1 | 9-7-05 | REL | | | | | | |
| <p>Drawn by: EC Date: 3/31/04</p> <p>Checked by: JMN Scale: H 1"=50' V 1"=5'</p> <p>Sheet of Project No. 02-162</p> | <p>605</p> <p>600</p> <p>595</p> | | | | | | | |