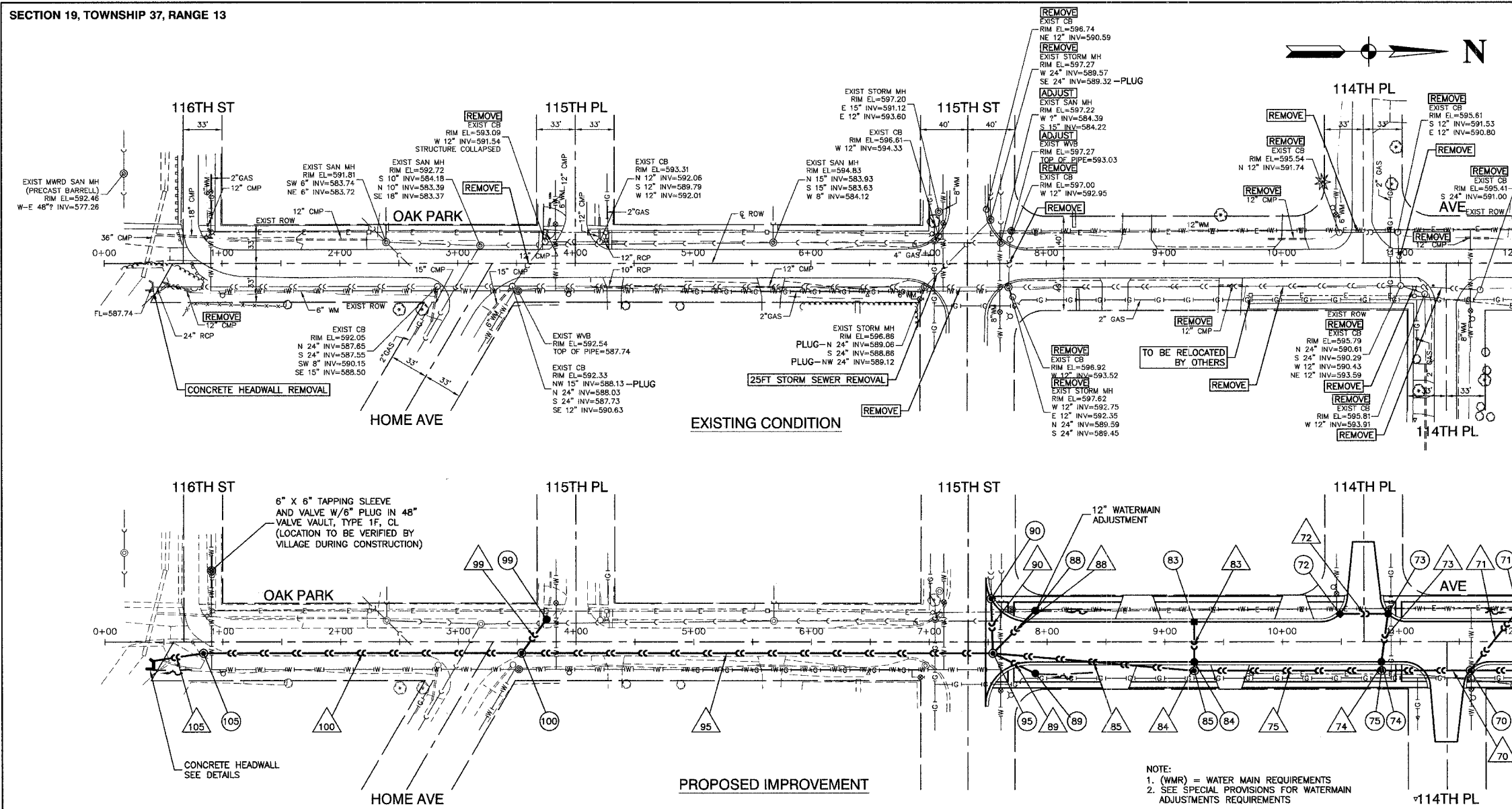


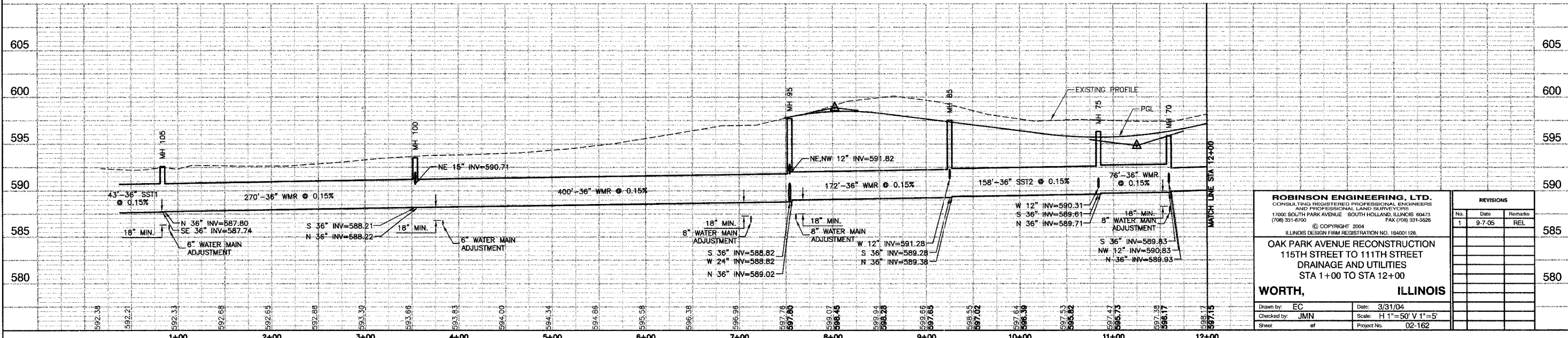
SECTION 19, TOWNSHIP 37, RANGE 13

FILE NO.	SECTION	COUNTY	TOTAL SHEETS	SHEET NO.
2955	02-00049-00-PV	COOK	45	13
STA.	TO STA.			
FED. ROAD DIST. NO.	ILLINOIS	FED. AID PROJECT		

Contract 83819



STA.	DESCRIPTION	REMARKS
70	STA 11+59, 24.5' RT MH TA 5' DIA FS T24 F&G RIM EL=595.82 NW 12" INV=590.83 N 30" INV=589.93 S 36" INV=589.83	
85	STA 9+25, 24.5' RT MH TA 5' DIA T1F CL RIM EL=597.50 W 12" INV=591.28 N 36" INV=589.38 S 36" INV=589.28	
71	STA 12+00, 26.8' LT CB TC T8C RIM EL=596.09 SE 12" INV=592.14	
72	STA 7+90, 26.8' LT CB TC T8C RIM EL=596.82 SE 12" INV=593.35	
73	STA 10+49, 23.6' LT INLET TA T24 F&G RIM EL=595.55 N 12" INV=590.87	
88	STA 7+90, 26.8' RT CB TC T8C RIM EL=596.67 SW 12" INV=593.42	
74	STA 10+92, 21.6' LT CB TA 4' DIA T24 F&G RIM EL=595.28 S 12" INV=590.65 E 12" INV=590.55	
89	STA 7+53, 37' LT MH TA 5' DIA T24 F&G RIM EL=597.09 W 24" INV=589.57 E 24" INV=589.56	
90	STA 10+83, 17' RT CB TA 4' DIA T24 F&G RIM EL=595.36 N 12" INV=590.35 S 12" INV=590.35	
75	STA 7+54, 9.5' RT MH TA 6' DIA T1F CL RIM EL=597.69 NW 12" INV=591.82 NE 12" INV=591.82 N 36" INV=589.02 W 24" INV=588.82 S 36" INV=588.82	
91	STA 10+83, 24.5' RT MH TA 5' DIA FS T1F CL RIM EL=596.28 W 12" INV=590.31 N 36" INV=589.71 S 36" INV=589.61	
92	STA 10+83, 24.5' RT MH TA 5' DIA FS T1F CL RIM EL=596.28 W 12" INV=590.31 N 36" INV=589.71 S 36" INV=589.61	
93	STA 9+25, 17' LT INLET TA T24 F&G RIM EL=596.99 E 12" INV=592.48	
94	STA 9+25, 17' RT CB TA 4' DIA T24 F&G RIM EL=596.99 W 12" INV=592.31 E 12" INV=591.31	
95	STA 3+75, 19' LT CB TA 4' DIA T8C RIM EL=596.77 N 12" INV=591.54 W 12" INV=591.54 SE 15" INV=590.85	
96	STA 3+75, 19' LT CB TA 4' DIA T8C RIM EL=596.77 N 12" INV=591.54 W 12" INV=591.54 SE 15" INV=590.85	
97	STA 3+54, 9.5' RT MH TA 5' DIA FS T1F CL RIM EL=593.53 NE 15" INV=590.71 N 36" INV=588.22 S 36" INV=588.21	
100	STA 0+84, 9.5' RT MH TA 5' DIA FS T1F CL RIM EL=592.60 N 36" INV=587.80 SE 36" INV=587.74	



ROBINSON ENGINEERING, LTD.
CONSULTING REGISTERED PROFESSIONAL ENGINEERS
AND PROFESSIONAL LAND SURVEYORS
1700 SOUTH PARK AVENUE SOUTH HOLLAND, ILLINOIS 60473
(708) 351-6700 FAX (708) 351-3256

© COPYRIGHT 2004
ILLINOIS DESIGN FIRM REGISTRATION NO. 184001128

OAK PARK AVENUE RECONSTRUCTION
115TH STREET TO 111TH STREET
DRAINAGE AND UTILITIES
STA 1+00 TO STA 12+00

WORTH, ILLINOIS

Drawn by: EC Date: 3/31/04
Checked by: JMN Scale: H 1"=50' V 1"=5'
Sheet of Project No. 02-162

REVISIONS		
No.	Date	Remarks
1	9-7-05	REL