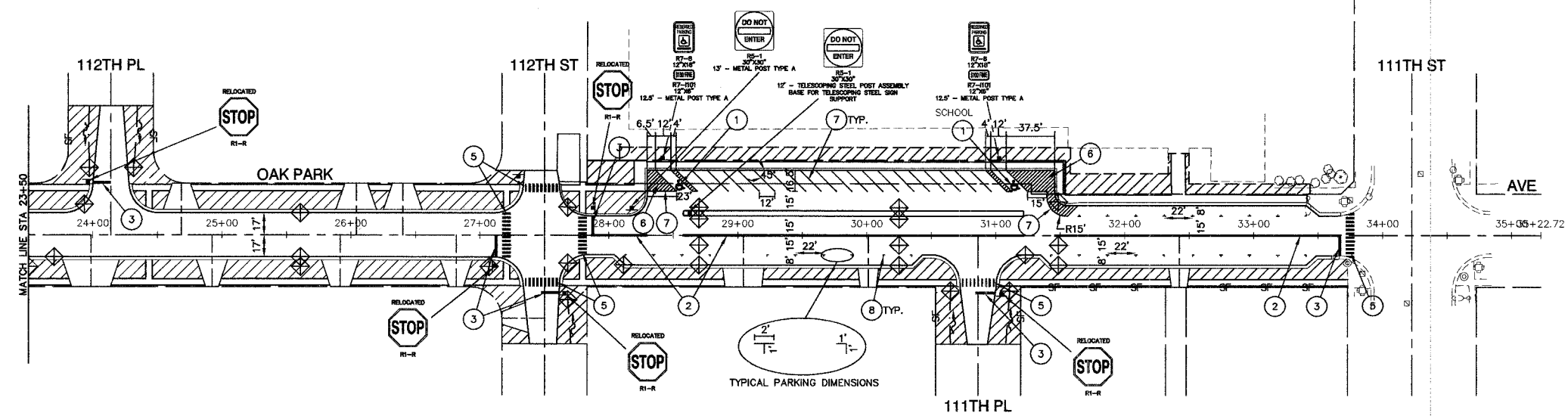
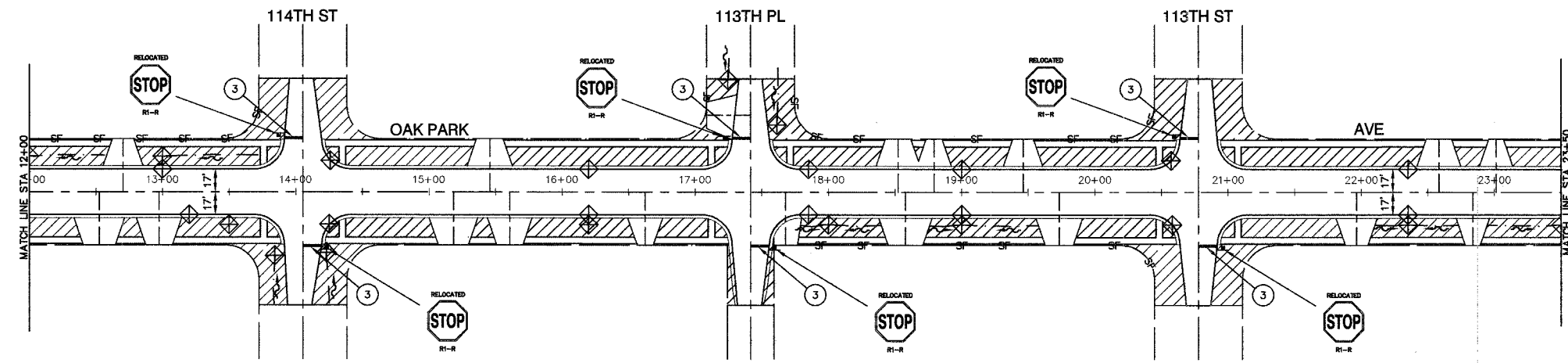
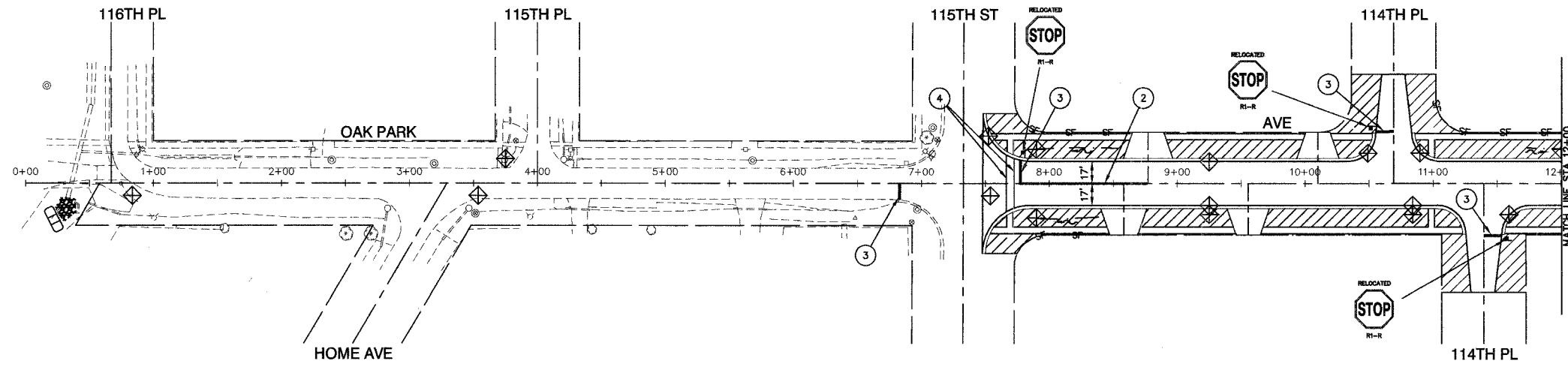
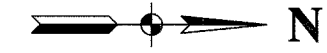


SECTION 19, TOWNSHIP 37, RANGE 13

FAU. R.E.	SECTION	COUNTY	TOTAL SHEETS	SHEET NO.
2955	02-00049-00-PV	COOK	45	23
STA.		TO STA.		
FED. ROAD DIST. NO.		ALNOS	FED. AID PROJECT	

Contract 83819



**EROSION CONTROL & LANDSCAPING LEGEND**

- SODDING, SALT TOLERANT & FERTILIZER NUTRIENTS
- RIP RAP - CLASS A4
- PERIMETER EROSION BARRIER
- INLET FILTERS
- TEMPORARY DITCH CHECKS

**PAVEMENT MARKING LEGEND**

- ① WHITE LETTERS & SYMBOLS
- ② DOUBLE 4" YELLOW CENTERLINE (11" C/C)
- ③ 24" WHITE STOP BAR
- ④ 6" WHITE CROSSWALK (6' C/C)
- ⑤ 12" WHITE LINE (3' C/C)
- ⑥ 4" WHITE DIAGONAL (2' C/C)
- ⑦ 4" WHITE LINE
- ⑧ 6" WHITE LINE

NOTE: 1-ALL EXISTING SIGNS THAT WILL BE DISTURBED DURING CONSTRUCTION WILL BE STOCKPILED AT A SAFE LOCATION. EXISTING SIGNS WILL BE RELOCATED AT LOCATIONS DETERMINED BY THE ENGINEER. THE COST OF RELOCATING EXISTING SIGNS WILL BE CONSIDERED INCIDENTAL TO THE CONTRACT.

**BENCH MARK:**

SPIKE NAIL IN SOUTH FACE OF WOOD LIGHT POLE ON NORTH SIDE OF 115TH ST BETWEEN RESIDENCE #7000 AND #6928 ELEVATION=600.767

**ROBINSON ENGINEERING, LTD.**  
 CONSULTING REGISTERED PROFESSIONAL ENGINEERS  
 AND PROFESSIONAL LAND SURVEYORS  
 17000 SOUTH PARK AVENUE SOUTH HOLLAND, ILLINOIS 60475  
 (708) 381-6700 FAX (708) 381-3828  
 © COPYRIGHT 2004  
 ILLINOIS DESIGN FIRM REGISTRATION NO. 184001128

**OAK PARK AVENUE RECONSTRUCTION**  
 115TH STREET TO 111TH STREET  
 LANDSCAPING, EROSION CONTROL,  
 PAVEMENT MARKING, AND SIGNING

**WORTH ILLINOIS**

Drawn by: EC/EDG Date: 3/31/04  
 Checked by: JN Scale: 1"=50'  
 Sheet of Project No. 02-162

REVISIONS		
No.	Date	Remarks