

F.A. RTE.	SECTION	COUNTY	TOTAL SHEETS	SHEET NO.
IL 43	03-00047-00-SW	COOK	20	1

CONTRACT NO. 83830

STATE OF ILLINOIS
DEPARTMENT OF TRANSPORTATION
DIVISION OF HIGHWAYS

PLANS FOR PROPOSED
SIDEWALK IMPROVEMENT

CONGESTION MITIGATION AND AIR QUALITY (CMAQ)

FAP 348 (HARLEM AVE / IL 43)
79TH STREET TO 91st STREET
SECTION 03-00047-00-SW
PROJECT NO. CMF-0348 (024)
COOK COUNTY

C-91-107-03

Village of Bridgeview

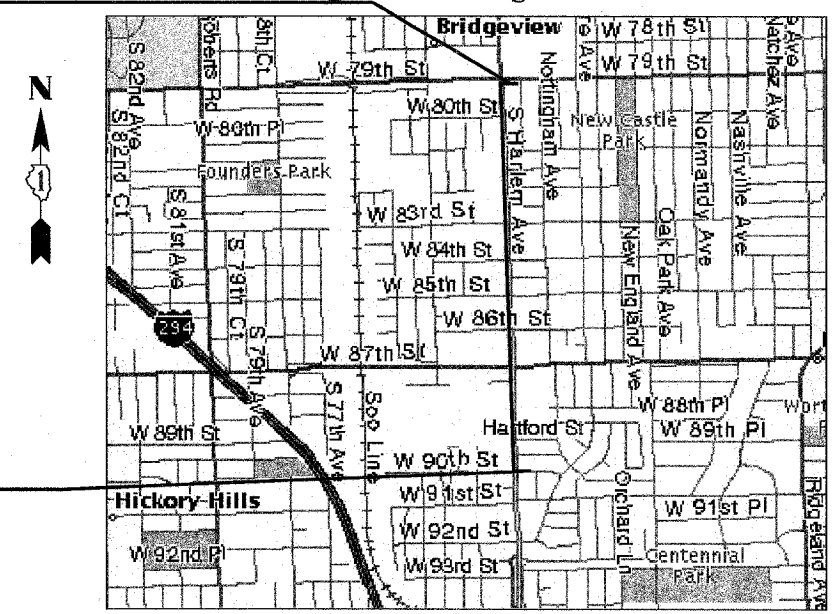
Federal Aid Design Engineer: Jessica Miller (847) 705-4487

FOR INDEX OF SHEETS, SEE SHEET NO. 2

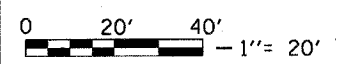


BEGIN PROJECT
STA. 2+76.95

END PROJECT
STA. 73+55.93



LOCATION MAP
(N.T.S.)



FULL SIZE PLANS HAVE BEEN PREPARED USING STANDARD ENGINEERING SCALES. REDUCED SIZED PLANS WILL NOT CONFORM TO STANDARD SCALES. IN MAKING MEASUREMENTS ON REDUCED PLANS, THE ABOVE SCALE MAY BE USED.

J.U.L.I.E.
JOINT UTILITY LOCATION INFORMATION FOR EXCAVATION
1-800-892-0123

CONTRACT NO. 83830

TOTAL LENGTH OF IMPROVEMENT = 1.34 MILES



David A. Zieseimer
SIGNATURE

12 / 1 / 05
DATE

LICENSE EXPIRES 11-30-2007

VILLAGE OF BRIDGEVIEW
APPROVED January 4, 2006
[Signature]
LOCAL AGENCY OFFICIAL

STATE OF ILLINOIS
DEPARTMENT OF TRANSPORTATION
DIVISION OF HIGHWAYS
APPROVED JANUARY 6, 2006
[Signature]
LOCAL ROADS AND STREETS ENGINEER
APPROVED Jan. 9, 2006
[Signature]
DEPUTY DIRECTOR OF HIGHWAYS, REGION ENGINEER

Globetrotters®
Engineering Corporation
ENGINEERS ARCHITECTS
300 South Wacker Drive
Chicago, Illinois 60606

PRINTED BY THE AUTHORITY
OF THE STATE OF ILLINOIS

F.A. RTE.	SECTION	COUNTY	TOTAL SHEETS	SHEET NO.
IL 43	03-00047-00-SW	COOK	20	2
STA.	TO STA.			
FED. ROAD DIST. NO.	ILLINOIS	FED. AID PROJECT		

CONTRACT NO. 83830

INDEX OF SHEETS

- 1 COVER SHEET
- 2 INDEX OF SHEETS & GENERAL NOTES
- 3 SUMMARY OF QUANTITIES
- 4 SCHEDULE OF QUANTITIES
- 5 TIES
- 6 PROPOSED TYPICAL SECTIONS
- 7 DETAIL SECTIONS
- 8 - 20 SIDEWALK IMPROVEMENT PLANS

LIST OF ILLINOIS DOT HIGHWAY STANDARDS

- 000001-04 STANDARD SYMBOLS, ABBREVIATIONS AND PATTERNS
- 424001-04 CURB RAMPS FOR SIDEWALKS
- 606001-02 CONCRETE CURB TYPE B AND COMBINATION CONCRETE CURB AND GUTTER
- 701606-04 URBAN LANE CLOSURE, MULTILANE, 2W WITH MOUNTABLE MEDIAN
- 701701-04 URBAN LANE CLOSURE, MULTILANE INTERSECTION
- 701801-03 LANE CLOSURE, MULTILANE, 1W OR 2W CROSSWALK OR SIDEWALK CLOSURE
- 702001-05 TRAFFIC CONTROL DEVICES
- 814001 CONCRETE HANDHOLES

GENERAL NOTES

1. ALL CONSTRUCTION SHALL BE DONE IN ACCORDANCE WITH THE STATE OF ILLINOIS "STANDARD SPECIFICATIONS FOR ROAD AND BRIDGE CONSTRUCTION" ADOPTED JAN. 1, 2002, AND THE LATEST EDITION OF THE "SUPPLEMENT SPECIFICATIONS AND SPECIAL PROVISIONS" AS NOTED ON THE CHECK SHEET AND THE SPECIAL PROVISIONS INCLUDED IN THE CONTRACT DOCUMENTS.
2. WHERE SECTION OR SUBSECTION MONUMENTS ARE ENCOUNTERED, THE ENGINEER SHALL BE NOTIFIED BEFORE THE MONUMENTS ARE REMOVED. THE CONTRACTOR SHALL CAREFULLY PRESERVE ALL PROPERTY MARKS AND MONUMENTS UNTIL THE OWNER, AUTHORIZED SURVEYOR OR AGENT HAS WITNESSED OR OTHERWISE REFERENCED THEIR LOCATION.
3. SIGNS
 - A) THE CONTRACTOR WILL BE REQUIRED TO RELOCATE OR REMOVE AND REPLACE SIGNS WHICH INTERFERE WITH HIS CONSTRUCTION OPERATIONS THIS WORK WILL BE CONSIDERED AS INCIDENTAL TO THE CONTRACT.
 - B) SIGNS SHALL NOT BE MOVED UNTIL PROGRESS OF WORK NECESSITATES IT.
 - C) EVERY SIGN REMOVED MUST BE RE-ERECTED AT A TEMPORARY LOCATION IN A WORKMANLIKE MANNER AND BE VISIBLE TO TRAFFIC FOR WHICH IT IS INTENDED. ALL SUCH SIGNS MUST BE MAINTAINED STRAIGHT AND CLEAN FOR THE DURATION OF THE TEMPORARY SETTING.
 - D) ALL SIGNS SHALL BE RE-ERECTED IN PERMANENT LOCATIONS AS THE SIDEWALK IS COMPLETED. HORIZONTAL LOCATION FROM THE EDGE OF PAVEMENT SHALL BE AS DESIGNATED BY THE ENGINEER.
 - E) ALL UNUSED SIGNS WILL BE RETURNED TO THE STATE OR VILLAGE.
 - F) LONGER POSTS MAY BE REQUIRED AT SOME TEMPORARY OR PERMANENT SIGN LOCATIONS TO MAINTAIN PROPER SIGN ELEVATIONS.
4. PUBLIC AND PRIVATE UTILITIES: THE CONTRACTOR WILL BE REQUIRED TO ASCERTAIN THE EXACT LOCATIONS OF UTILITIES AND EXERCISE CARE DURING HIS CONSTRUCTION OPERATIONS SO AS NOT TO DAMAGE THEM.
5. EARTH EXCAVATION
 - A) THE REMOVAL OF EXISTING BITUMINOUS PAVEMENT AND AGGREGATE BASE COURSE SHALL BE CONSIDERED AS EARTH EXCAVATION.
6. DRIVEWAYS OR ENTRANCES
 - A) EXISTING BITUMINOUS, CONCRETE, AND GRAVEL DRIVEWAYS AND ENTRANCES SHALL BE SURFACED TO THE RIGHT-OF-WAY WITH BITUMINOUS CONCRETE SURFACE COURSE AS SCHEDULED IN THE PLANS.
7. ALL ELEVATIONS SHOWN ON THESE PLANS ARE ON U.S.G.S. DATUM.

8. ANY REFERENCE TO STANDARDS IN THE PLANS OR SPECIAL PROVISIONS SHALL BE INTERPRETED TO BE LATEST STANDARDS OF THE DEPARTMENT.
9. THE CONTRACTOR'S ATTENTION IS CALLED TO THE FACT THAT SOME QUANTITIES ARE GIVEN IN BOTH SUMMARY FORM AND SCHEDULE ON THE PLAN SHEETS. CARE SHOULD BE TAKEN TO AVOID DUPLICATION OF QUANTITIES.
10. THE CONTRACTOR IS REQUIRED TO TEMPORARILY RESET MAILBOXES THAT INTERFERE WITH CONSTRUCTION. THE COST IS INCIDENTAL TO THE CONTRACT.
11. SEDIMENTATION AND EROSION CONTROL
 - A) SOIL DISTURBANCE SHALL BE CONDUCTED IN SUCH A MANNER AS TO MINIMIZE EROSION. SOIL STABILIZATION MEASURES SHALL CONSIDER THE TIME OF YEAR, SITE CONDITIONS AND THE USE OF TEMPORARY OR PERMANENT MEASURES.
 - B) SOIL EROSION AND SEDIMENT CONTROL FEATURES SHALL BE CONSTRUCTED PRIOR TO THE COMMENCEMENT OF HYDROLOGIC DISTURBANCE OF UPLAND AREAS.
 - C) DISTURBED AREAS SHALL BE STABILIZED WITH TEMPORARY OR PERMANENT MEASURES WITHIN 14 CALENDAR DAYS OF THE END OF ACTIVE HYDROLOGIC DISTURBANCE OR REDISTURBANCE.
12. TYPICAL CONSTRUCTION SEQUENCING:
 - A) INSTALLATION OF SOIL EROSION AND SEDIMENT CONTROL SE/SC MEASURES:
 - 1) SELECTIVE VEGETATION REMOVAL FOR SILT FENCE INSTALLATION.
 - 2) SILT FENCE INSTALLATION.
 - 3) CONSTRUCTION FENCING AROUND AREAS NOT TO BE DISTURBED.
 - 4) STABILIZED CONSTRUCTION ENTRANCE.
 - B) WHERE NECESSARY CLEAR AND GRUB (SHRUBS AND SMALL TREES).
 - C) CONSTRUCT SEDIMENT TRAPPING DEVICES (SEDIMENT TRAPS, BASINS...).
 - D) STRIP TOPSOIL, STOCKPILE TOPSOIL AND GRADE SITE.
 - E) TEMPORARILY STABILIZE TOPSOIL STOCKPILES (SEED AND SILT FENCES AROUND TOE OF SLOPE).
 - F) TEMPORARILY STABILIZE ALL AREAS INCLUDING LOTS THAT HAVE REACHED TEMPORARY GRADE.
 - G) REMOVE AND RELOCATE ANY EXISTING APPURTENANCES.
 - H) ADJUST APPURTENANCES TO REMAIN IN PLACE WITHIN PROPOSED SIDEWALK.
 - I) INSTALL SIDEWALKS.
 - J) INSTALL ANY REQUIRED DRIVEWAY OR PARKING LOT CURB & GUTTER.
 - K) PERMANENTLY STABILIZE ALL OUTLET AREAS.
 - L) INSTALL STRUCTURES AND GRADE INDIVIDUAL LOTS.
 - M) PERMANENTLY STABILIZE LOTS.
 - N) REMOVE ALL TEMPORARY SE/SC MEASURES AFTER THE SITE IS STABILIZED WITH VEGETATION.
13. IN ORDER TO AVOID SIDEWALK ENCROACHMENT ONTO PRIVATE PROPERTY, THE CONTRACTOR SHALL DELINEATE THE R.O.W. LINE ALONG THE WEST FRONTAGE OF HARLEM AVENUE.
14. AT LOCATIONS WHERE ASPHALT PAVEMENT IS TO BE REMOVED FROM ENCROACHING PARKING AREAS, A SAW CUT SHALL BE MADE ALONG THE R.O.W. LINE AND FULL DEPTH OF PAVEMENT SHALL BE REMOVED BETWEEN THE SAW CUT AND THE STREET. THE SAW CUT IS INCIDENTAL TO THE BITUMINOUS CONCRETE PAVEMENT REMOVAL (FULL DEPTH).
15. AT LOCATIONS WHERE TREES, LIGHT POLES, FIRE HYDRANTS AND OTHER APPURTENANCES ARE LOCATED ALONG THE GENERAL PATH OF THE PROPOSED SIDEWALK, THE ALIGNMENT SHALL BE ADJUSTED TO MINIMIZE REMOVAL OR RELOCATION.

16. AT SOME LOCATIONS THERE IS EXISTING STONE RUBBLE MATERIAL ALONG THE CURB, THIS MATERIAL CAN BE REUSED FOR CONSTRUCTION OF THE NEW STONE RUBBLE EDGE.
17. HANDICAP RAMPS SHALL BE PAIDED FOR IN ACCORDANCE WITH BUREAU OF DESIGN & ENVIRONMENT SPECIAL PROVISION.
18. SIDEWALKS SHALL BE IN ACCORDANCE WITH A.D.A. REQUIREMENTS.
19. CURB REMOVAL WILL BE 15FT. THE REMOVAL WILL BE 7.5FT (OR LESS) IN EACH DIRECTION FROM THE CENTER OF THE SIDEWALK OR DRIVEWAY.

20. REMOVAL OF THE EXISTING DECORATIVE STONE FROM APPROXIMATE STA. 17+00.00 TO STA. 22+00.00 IS INCIDENTAL TO THE SIDEWALK REMOVAL.

PROJECT NOTES

1. FIRE HYDRANT RELOCATION, WATER VALVE (BUFFALO BOXES) ADJUSTMENTS, AND TREE REMOVAL TO BE PERFORMED BY THE VILLAGE.



VILLAGE CONTACT:

WILLIAM CRONCH
DIRECTOR OF PUBLIC WORKS
VILLAGE OF BRIDGEVIEW
7500 S. OKETO AVE
BRIDGEVIEW, IL 60455
(708) 924-8051
2. TELEPHONE RELOCATION CONTACT IS SBC/AMERITECH.

CONTACT:

MICHAEL WATTERS
SBC/AMERITECH
2427 UNION
FLOOR 2
BLUE ISLAND, IL 60406
(708) 396-7614



GENERAL NOTES SURROUNDED BY A BOX DENOTE WORK THAT IS INCIDENTAL TO THE CONTRACT.

 <p>Globetrotters[®] Engineering Corporation ENGINEERS ARCHITECTS 300 South Wacker Drive Chicago, Illinois 60606</p>	 <p>Village of Bridgeview Illinois Steven M. Landek, Mayor</p>	<table border="1"> <tr> <th colspan="2">REVISIONS</th> </tr> <tr> <th>NAME</th> <th>DATE</th> </tr> <tr> <td> </td> <td> </td> </tr> <tr> <td> </td> <td> </td> </tr> <tr> <td> </td> <td> </td> </tr> <tr> <td> </td> <td> </td> </tr> <tr> <td> </td> <td> </td> </tr> <tr> <td> </td> <td> </td> </tr> <tr> <td> </td> <td> </td> </tr> <tr> <td> </td> <td> </td> </tr> </table>	REVISIONS		NAME	DATE																	<p>ILLINOIS DEPARTMENT OF TRANSPORTATION SIDEWALK IMPROVEMENT</p> <p>INDEX OF SHEETS & GENERAL NOTES</p> <p>VERT. N.T.S. SCALE: HORIZ. N.T.S. DATE: 11 / 17 / 05</p> <p>DRAWN BY: C.G. CHECKED BY: D.Z.</p>
		REVISIONS																					
NAME	DATE																						

SUMMARY OF QUANTITIES

	IDOT CODE	ITEM DESCRIPTION	UNIT	TOTAL QUANTITY	80% FEDERAL 20% BRIDGEVIEW
					CONSTRUCTION TYPE CODE SFTY-1B
1	20200100	EARTH EXCAVATION	CU YD	771	771
2	21101615	TOPSOIL, FURNISH AND PLACE, 4 IN	SQ YD	4207	4207
3	25000400	NITROGEN FERTILIZER NUTRIENT	POUND	52	52
4	25000500	PHOSPHORUS FERTILIZER NUTRIENT	POUND	52	52
5	25000600	POTASIAM FERTILIZER NUTRIENT	POUND	52	52
6	25200110	SODDING, SALT TOLERANT	SQ YD	4207	4207
7	25200200	SUPPLEMENTAL WATERING	UNIT	63	63
8	28000400	PERIMETER EROSION BARRIER	FOOT	60	60
9	31101000	SUB-BASE GRANULAR MATERIAL, TYPE B	TON	10	10
10	42400200	PORTLAND CEMENT CONCRETE SIDEWALK, 5 IN	SQ FT	20297	20297
11	42400800	DETECTABLE WARNINGS	SQ FT	1010	1010
12	44000300	CURB REMOVAL	FOOT	935	935
13	44000500	COMBINATION CURB AND GUTTER REMOVAL	FOOT	308	308
14	44000600	SIDEWALK REMOVAL	SQ FT	3842	3842
15	60250200	CATCH BASINS TO BE ADJUSTED	EACH	4	4
16	60255500	MANHOLES TO BE ADJUSTED	EACH	5	5
17	60265700	VALVE VAULT TO BE ADJUSTED	EACH	1	1
18	60600605	CONCRETE CURB, TYPE B	FOOT	1633	1633
19	60605000	COMBINATION CONCRETE CURB AND GUTTER, TYPE B-6.24	FOOT	270	270
20	63200310	GUARDRAIL REMOVAL	FOOT	14	14
21	67100100	MOBILIZATION	L SUM	1	1
22	70102625	TRAFFIC CONTROL AND PROTECTION, STANDARD 701606	L SUM	1	1
23	70102635	TRAFFIC CONTROL AND PROTECTION, STANDARD 701701	L SUM	1	1
24	70102640	TRAFFIC CONTROL AND PROTECTION, STANDARD 701801	L SUM	1	1
25	72400710	RELOCATE SIGN PANEL - TYPE 1	SQ FT	35	35
* 26	78000400	THERMOPLASTIC PAVEMENT MARKING - LINE 6"	FOOT	3186	3186
* 27	78000650	THERMOPLASTIC PAVEMENT MARKING - LINE 24"	FOOT	939	939
28	X4066414	BITUMINOUS CONCRETE SURFACE COURSE, SUPERPAVE, MIX "C", N50	TON	49.6	49.6
29	X4066614	BITUMINOUS CONCRETE BINDER COURSE, SUPERPAVE, IL-19, N50	TON	99.1	99.1
30	X4066735	LEVELING BINDER (HAND METHOD), SUPERPAVE N50	TON	10	10
31	X8950200	REBUILD EXISTING HANDHOLE	EACH	2	2
32	X8950210	REBUILD EXISTING HANDHOLE TO HEAVY-DUTY HANDHOLE	EACH	1	1
33	XX006461	BITUMINOUS CONCRETE PAVEMENT REMOVAL (FULL DEPTH)	SQ YD	1095	1095

* - DENOTES SPECIALTY ITEM



 Globetrotters Engineering Corporation ENGINEERS ARCHITECTS 300 South Wacker Drive Chicago, Illinois 60606	 Village of Bridgeview Illinois Steven M. Landek, Mayor	REVISIONS NAME DATE	ILLINOIS DEPARTMENT OF TRANSPORTATION SIDEWALK IMPROVEMENT SUMMARY OF QUANTITIES SCALE: VERT. N.T.S. HORIZ. N.T.S. DATE: 11 / 17 / 05
		DRAWN BY: B.C. CHECKED BY: L.S. / D.Z.	

F.A. RTE.	SECTION	COUNTY	TOTAL SHEETS	SHEET NO.
IL 43	03-00047-00-SW	COOK	20	4
STA.		TO STA.		
FED. ROAD DIST. NO.		ILLINOIS FED. AID PROJECT		
CONTRACT NO. 83830				

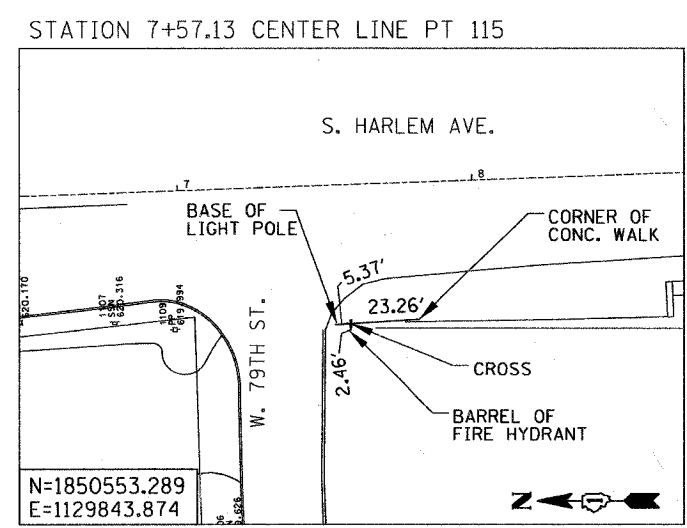
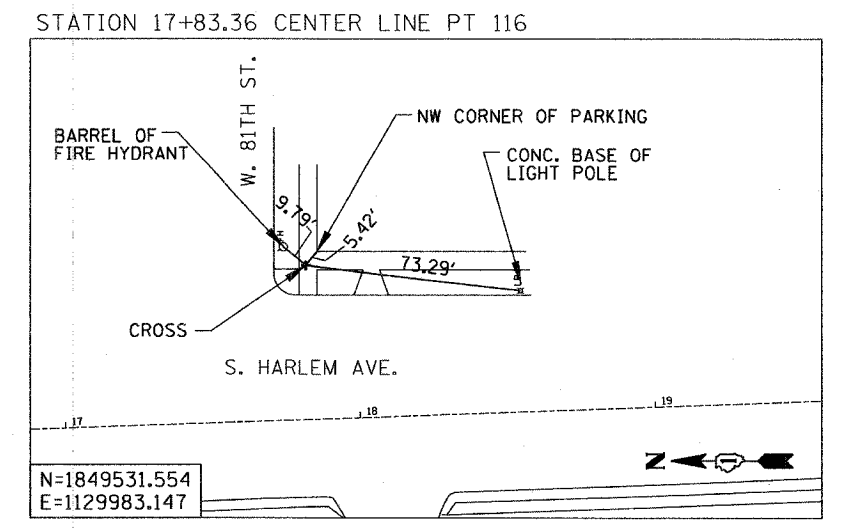
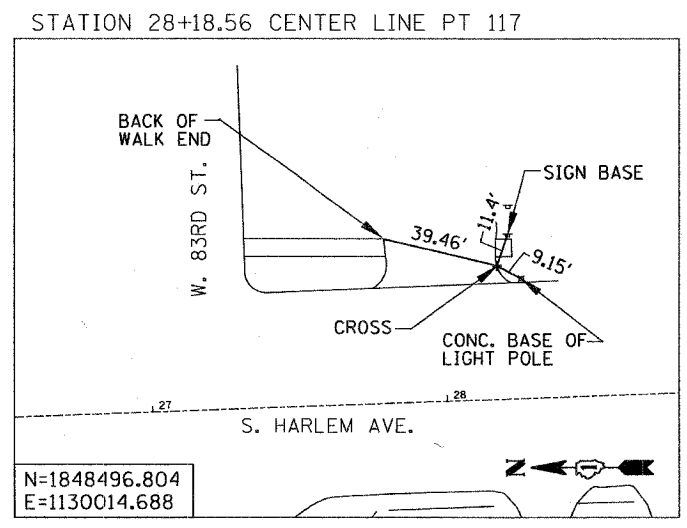
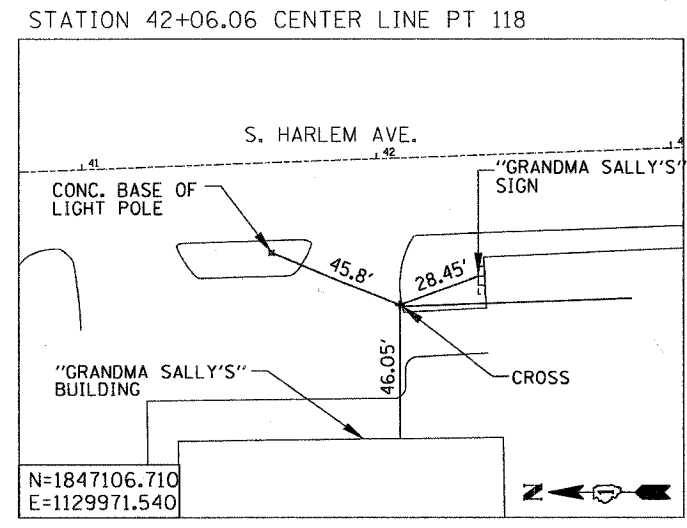
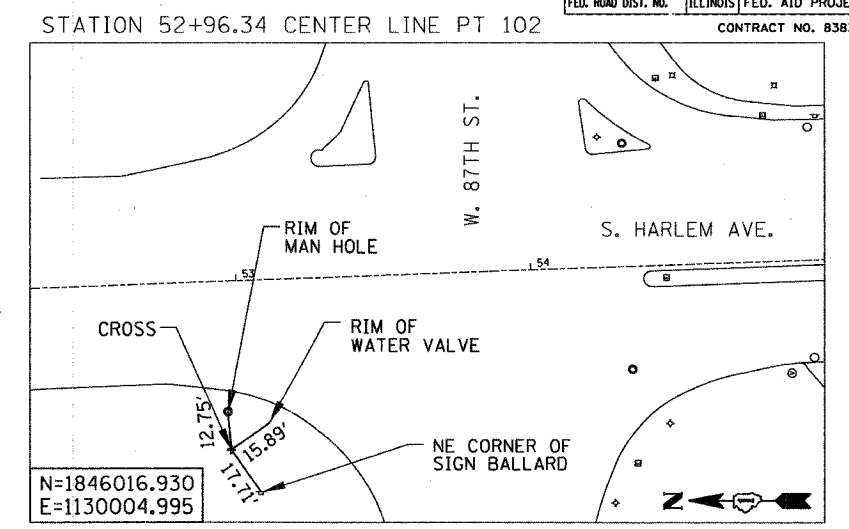
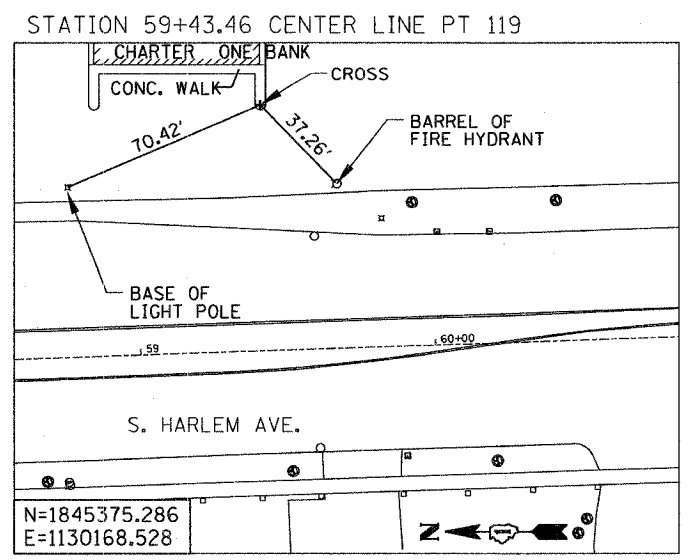
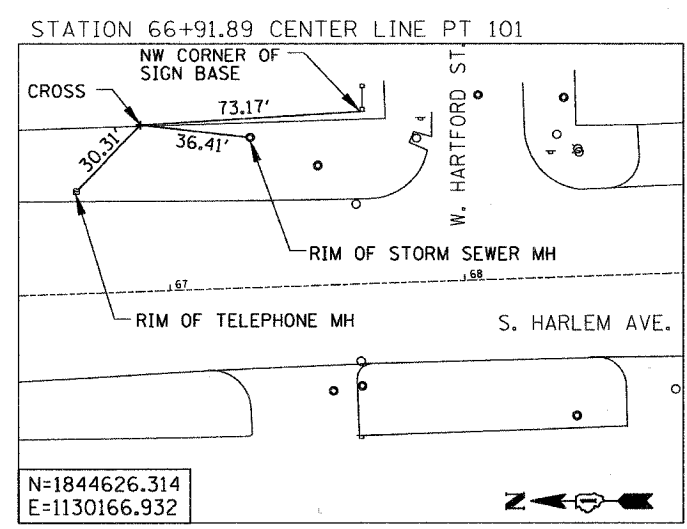
SCHEDULE OF QUANTITIES

IDOT CODE	ITEM DESCRIPTION	UNIT	TOTAL QUANTITY	STA 2+76.95	STA 16+94.08	STA 26+80.00	STA 34+04.73	STA 47+32.12	STA 53+06.50	STA 60+77.22	STA 65+23.17	
				TO STA 14+86.01	TO STA 24+89.24	TO STA 33+42.61	TO STA 45+45.39	TO STA 51+51.82	TO STA 56+85.44	TO STA 63+31.00	TO STA 73+55.93	
1	20200100	EARTH EXCAVATION	CU YD	771	94	207	97	147	70	33	0	123
2	21101615	TOPSOIL, FURNISH AND PLACE, 4 IN	SQ YD	4207	278	649	645	1238	458	291	0	648
3	25000400	NITROGEN FERTILIZER NUTRIENT	POUND	52	3	8	8	15	6	4	0	8
4	25000500	PHOSPHORUS FERTILIZER NUTRIENT	POUND	52	3	8	8	15	6	4	0	8
5	25000600	POTASIAM FERTILIZER NUTRIENT	POUND	52	3	8	8	15	6	4	0	8
6	25200110	SODDING, SALT TOLERANT	SQ YD	4207	278	649	645	1238	458	291	0	648
7	25200200	SUPPLEMENTAL WATERING	UNIT	63	4	10	10	18	7	4	0	10
8	28000400	PERIMETER EROSION BARRIER	FOOT	60	60	0	0	0	0	0	0	0
9	31101000	SUB-BASE GRANULAR MATERIAL, TYPE B	TON	10	0.5	0	0	0	0.5	0	0	9.0
10	42400200	PORTLAND CEMENT CONCRETE SIDEWALK, 5 IN	SQ FT	20297	4003	3340	2502	4080	1883	1090	75	3324
11	42400800	DETECTABLE WARNINGS	SQ FT	1010	130	140	120	300	60	80	0	180
12	44000300	CURB REMOVAL	FOOT	935	75	210	176	156	80	0	0	238
13	44000500	COMBINATION CURB AND GUTTER REMOVAL	FOOT	308	118	0	0	0	60	110	0	20
14	44000600	SIDEWALK REMOVAL	SQ FT	3842	280	2462	847	78	100	0	75	0
15	60250200	CATCH BASINS TO BE ADJUSTED	EACH	4	0	0	1	2	1	0	0	0
16	60255500	MANHOLES TO BE ADJUSTED	EACH	5	0	1	2	0	0	0	0	0
17	60265700	VALVE VAULT TO BE ADJUSTED	EACH	1	0	0	0	0	0	0	0	1
18	60600605	CONCRETE CURB, TYPE B	FOOT	1633	75	210	220	660	30	0	0	438
19	60605000	COMBINATION CONCRETE CURB AND GUTTER, TYPE B-6.24	FOOT	270	140	0	0	0	0	110	0	20
20	63200310	GUARDRAIL REMOVAL	FOOT	14	0	0	0	0	0	0	0	14
21	67100100	MOBILIZATION	L SUM	1	0	0	0	0	0	0	0	0
22	70102625	TRAFFIC CONTROL AND PROTECTION, STANDARD 701606	L SUM	1	0	0	0	0	0	0	0	0
23	70102635	TRAFFIC CONTROL AND PROTECTION, STANDARD 701701	L SUM	1	0	0	0	0	0	0	0	0
24	70102640	TRAFFIC CONTROL AND PROTECTION, STANDARD 701801	L SUM	1	0	0	0	0	0	0	0	0
25	72400710	RELOCATE SIGN PANEL - TYPE 1	SQ FT	35	0	0	0	0	35	0	0	0
26	78000400	THERMOPLASTIC PAVEMENT MARKING - LINE 6"	FOOT	3186	1020	0	258	462	60	752	170	464
27	78000650	THERMOPLASTIC PAVEMENT MARKING - LINE 24"	FOOT	939	276	0	52	123	15	206	131	136
28	X4066414	BITUMINOUS CONCRETE SURFACE COURSE, SUPERPAVE, MIX "C", N50	TON	49.6	2	0	0	28	0.4	0	0	19.2
29	X4066614	BITUMINOUS CONCRETE BINDER COURSE, SUPERPAVE, IL-19, N50	TON	99.1	2	0	0	58	0.7	0	0	38.4
30	X4066735	LEVELING BINDER (HAND METHOD), SUPERPAVE N50	TON	10	0	0	0	0	0	0	0	10
31	X8950200	REBUILD EXISTING HANDHOLE	EACH	2	0	0	1	0	0	0	0	1
32	X8950210	REBUILD EXISTING HANDHOLE TO HEAVY-DUTY HANDHOLE	EACH	1	1	0	0	0	0	0	0	0
33	X1000461	BITUMINOUS CONCRETE PAVEMENT REMOVAL (FULL DEPTH)	SQ YD	1095	0	0	0	133	0	0	0	962

- DENOTES SPECIALTY ITEM

 Globetrotters® Engineering Corporation ENGINEERS ARCHITECTS 300 South Wacker Drive Chicago, Illinois 60606	 Village of Bridgeview Illinois Steven M. Landek, Mayor	REVISIONS NAME DATE		ILLINOIS DEPARTMENT OF TRANSPORTATION SIDEWALK IMPROVEMENT SCHEDULE OF QUANTITIES SCALE: VERT. N.T.S. HORIZ. N.T.S. DATE: 11 / 17 / 05
		DRAWN BY: B.C. CHECKED BY: L.S. / D.Z.		

F.A. RTE.	SECTION	COUNTY	TOTAL SHEETS	SHEET NO.
IL 43	03-00047-00-SW	COOK	20	5
STA.	TO STA.			
FED. ROAD DIST. NO.	ILLINOIS	FED. AID PROJECT		
CONTRACT NO. 83830				



Globetrotters
Engineering Corporation
ENGINEERS ARCHITECTS
300 South Wacker Drive
Chicago, Illinois 60606

Village of Bridgeview
Illinois
Steven M. Landek, Mayor

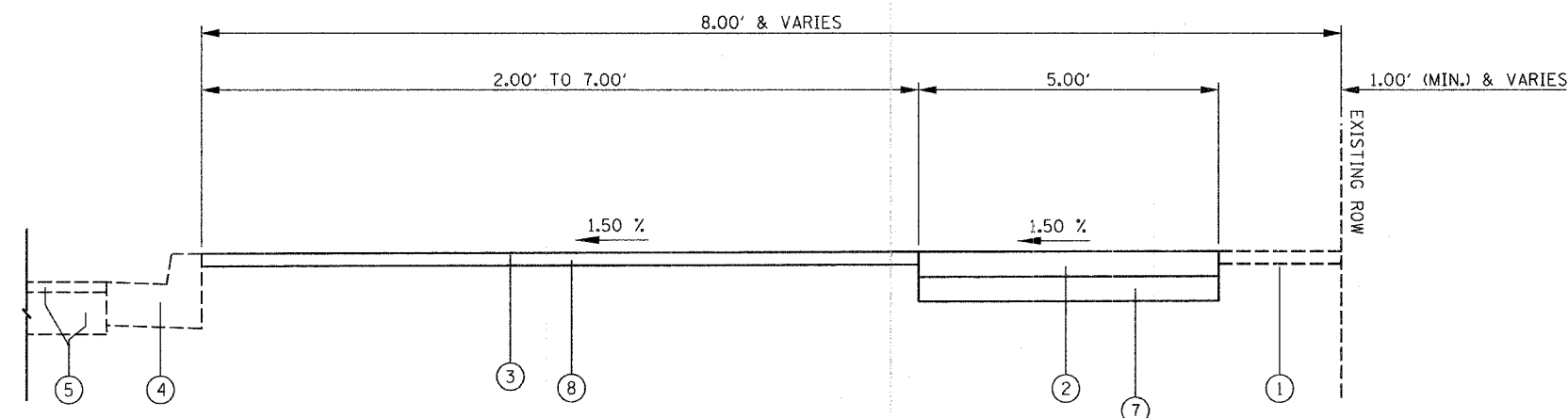
REVISIONS	
NAME	DATE

ILLINOIS DEPARTMENT OF TRANSPORTATION
SIDEWALK IMPROVEMENT
STATIONING TIES

VERT. N.T.S.
SCALE: HORIZ. N.T.S.
DATE: 11 / 17 / 05

DRAWN BY: B.S.
CHECKED BY: C.G.

F.A. RTE.	SECTION	COUNTY	TOTAL SHEETS	SHEET NO.
IL 43	03-00047-00-SW	COOK	20	6
STA.	TO STA.			
FED. ROAD DIST. NO.	ILLINOIS	FED. AID PROJECT		
CONTRACT NO. 83830				

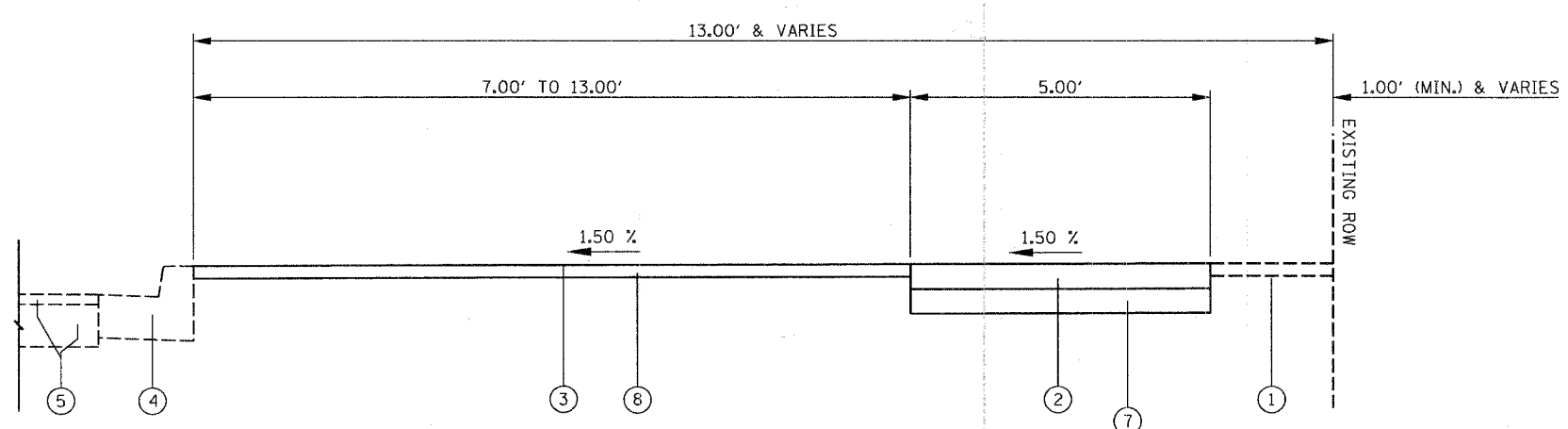


PROPOSED TYPICAL SECTION

STA 2+54.37 TO STA 4+97.60
 STA 6+32.55 TO STA 8+66.92
 STA 27+73.46 TO STA 30+76.15
 STA 65+23.17 TO STA 67+26.00
 STA 69+05.60 TO STA 69+81.98
 STA 72+06.72 TO STA 73+55.93

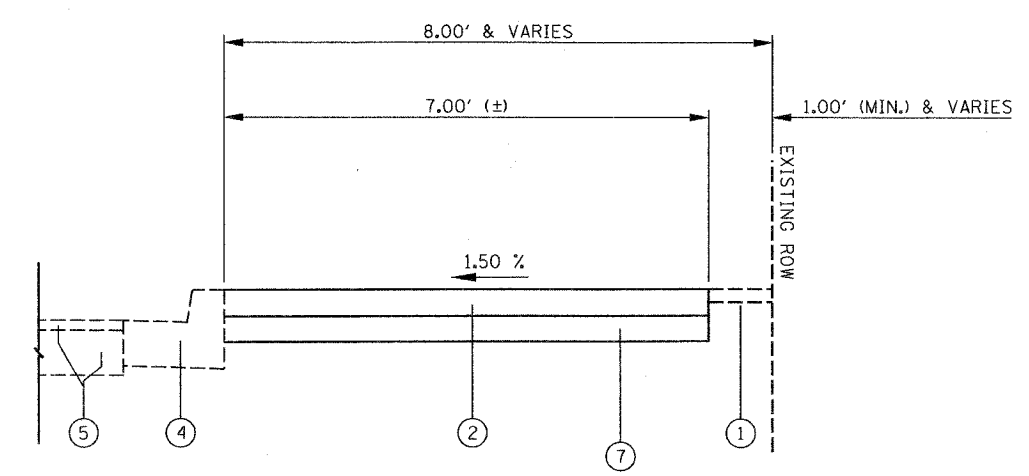
LEGEND

- ① EXISTING GROUND (I.E., SOD, PAVEMENT, ETC.)
- ② PORTLAND CEMENT CONCRETE SIDEWALK, 5 IN
- ③ SODDING, SALT TOLERANT
- ④ EXISTING CONCRETE CURB
- ⑤ EXISTING HARLEM AVENUE SUB-BASE GRANULAR MATERIAL & BITUMINOUS PAVEMENT
- ⑥ CONCRETE CURB, TYPE B
- ⑦ SUB-BASE GRANULAR MATERIAL, TYPE B, 4 IN (INCIDENTAL TO THE SIDEWALK)
- ⑧ TOPSOIL, FURNISH AND PLACE, 4 IN
- ⑨ BITUMINOUS CONCRETE PAVEMENT REMOVAL (FULL DEPTH)
- ⑩ CURB REMOVAL
- ⑪ FULL-DEPTH SAW CUT (INCIDENTAL TO THE BITUMINOUS CONCRETE PAVEMENT REMOVAL, (FULL DEPTH))



PROPOSED TYPICAL SECTION

STA 16+94.08 TO STA 24+89.29
 STA 31+08.57 TO STA 40+97.17
 STA 43+85.15 TO STA 56+85.44
 STA 67+62.45 TO STA 68+53.54





PROPOSED TYPICAL SECTION

STA 5+18.53 TO STA 5+77.25
 STA 6+13.56 TO STA 6+32.55
 STA 27+36.78 TO STA 27+73.46

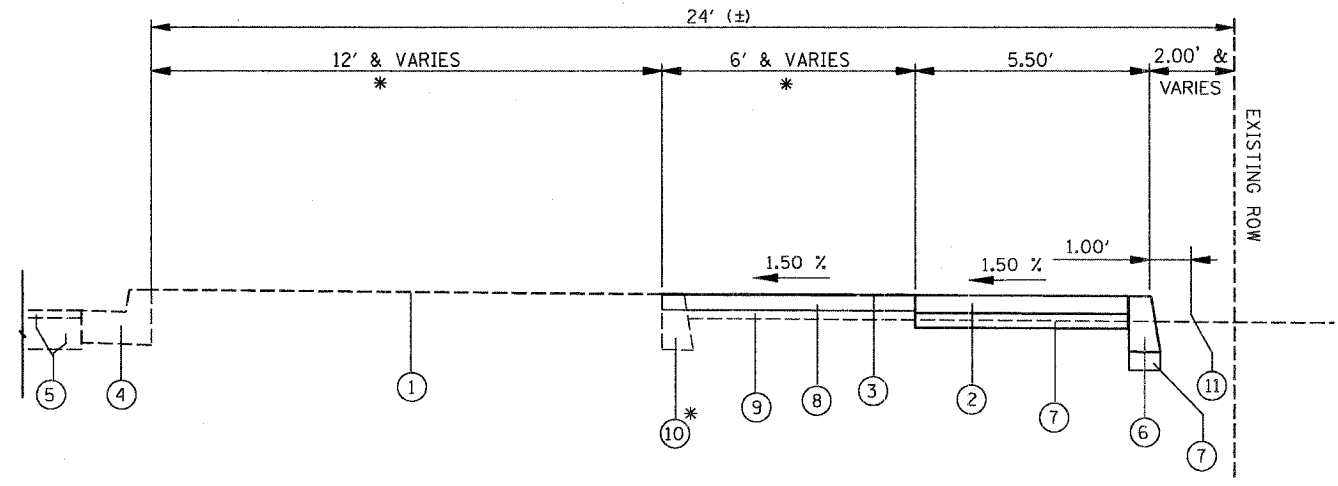
MIXTURE REQUIREMENTS TABLE

CODE NO.	ITEM	AC TYPE	VOIDS	MAX RAP%	LIFT/TYPICAL THICKNESS	UNIT WEIGHT (LBS/SqYd/In)
X4066414	BITUMINOUS CONCRETE SURFACE COURSE, SUPERPAVE, MIX "C", N50	PG 64-22	4% @ 50 GYR.	15%	1-1/2"	112
X4066614	BITUMINOUS CONCRETE BINDER COURSE, SUPERPAVE, IL-19, N50	PG 58-22	4% @ 50 GYR.	25%	2-1/4"	112
X4066735	LEVELING BINDER (HAND METHOD), SUPERPAVE N50	PG 64-22	4% @ 50 GYR.	15%	3/4" - 2"	112

NOTE: BITUMINOUS ITEMS ARE USED FOR THE RESTORATION OF AFFECTED DRIVEWAYS/PARKING LOTS, AND THE RECONSTRUCTION OF CURB AND GUTTER AREAS (WHERE APPLICABLE).

 Globetrotters [®] Engineering Corporation ENGINEERS ARCHITECTS 300 South Wacker Drive Chicago, Illinois 60606	 Village of Bridgeview Illinois Steven M. Landek, Mayor	REVISIONS NAME DATE	ILLINOIS DEPARTMENT OF TRANSPORTATION SIDEWALK IMPROVEMENT PROPOSED TYPICAL SECTIONS
		SCALE: VERT. N.T.S. HORIZ. N.T.S. DATE: 11 / 17 / 05	



F.A. RTE.	SECTION	COUNTY	TOTAL SHEETS	SHEET NO.
IL 43	03-00047-00-SW	COOK	20	7
STA.		TO STA.		
FED. ROAD DIST. NO.		ILLINOIS	FED. AID PROJECT	
CONTRACT NO. 83830				



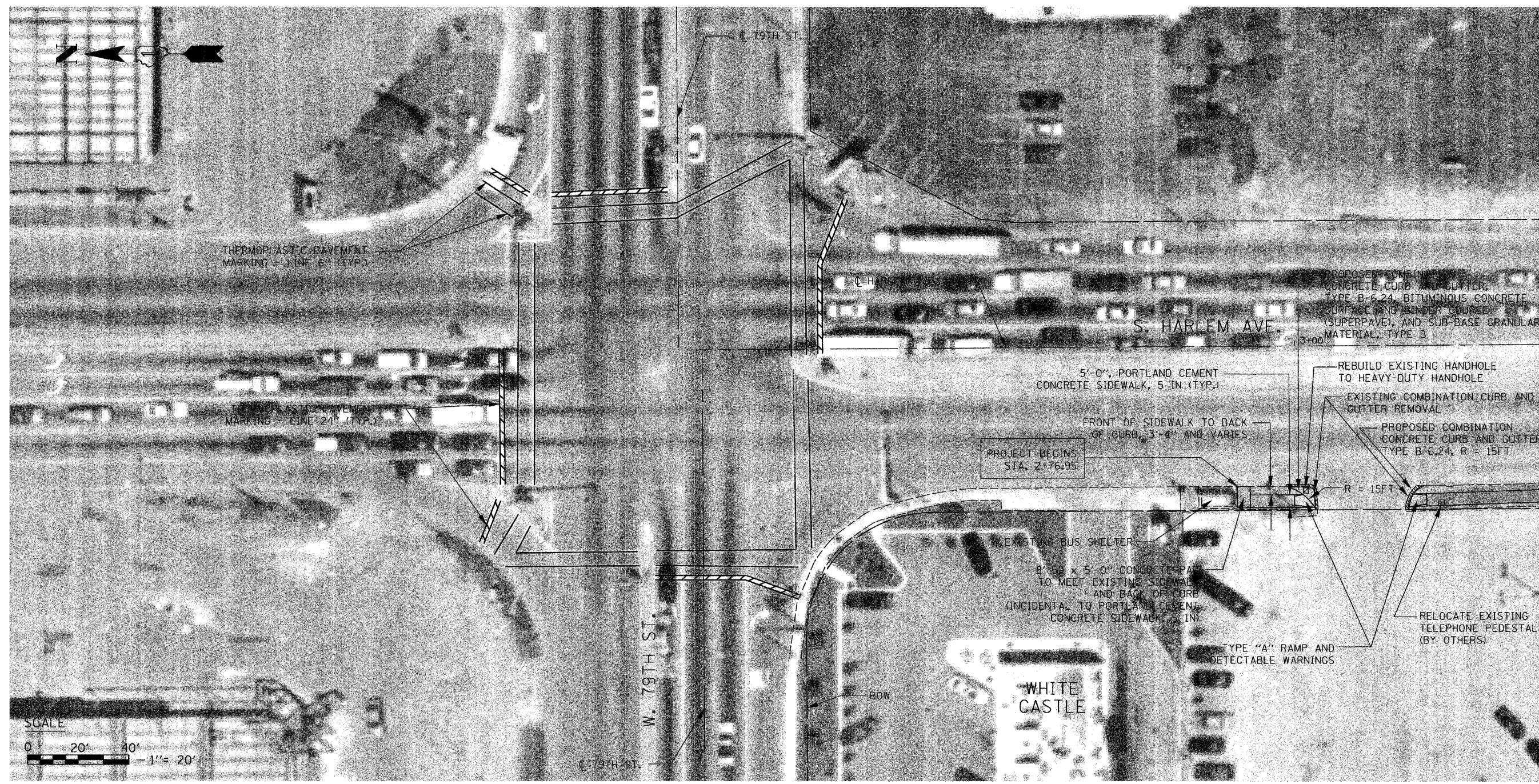
SECTION A-A
 HARLEM AVENUE
 * STA 41+29.93 TO STA 41+78.11
 STA 42+06.29 TO STA 43+85.15
 STA 69+97.84 TO STA 72+06.72

LEGEND

- ① EXISTING GROUND (I.E., SOD, PAVEMENT, ETC.)
- ② PORTLAND CEMENT CONCRETE SIDEWALK, 5 IN
- ③ SODDING, SALT TOLERANT
- ④ EXISTING CONCRETE CURB
- ⑤ EXISTING HARLEM AVENUE SUB-BASE GRANULAR MATERIAL & BITUMINOUS PAVEMENT
- ⑥ CONCRETE CURB, TYPE B
- ⑦ SUB-BASE GRANULAR MATERIAL, TYPE B, 4 IN (INCIDENTAL TO THE SIDEWALK)
- ⑧ TOPSOIL, FURNISH AND PLACE, 4 IN
- ⑨ BITUMINOUS CONCRETE PAVEMENT REMOVAL (FULL DEPTH)
- ⑩ CURB REMOVAL
- ⑪ FULL-DEPTH SAW CUT (INCIDENTAL TO THE BITUMINOUS CONCRETE PAVEMENT REMOVAL, (FULL DEPTH))

 <p>Globetrotters® Engineering Corporation ENGINEERS ARCHITECTS 300 South Wacker Drive Chicago, Illinois 60606</p>	 <p>Village of Bridgeview Illinois Steven M. Landek, Mayor</p>	REVISIONS NAME DATE	ILLINOIS DEPARTMENT OF TRANSPORTATION SIDEWALK IMPROVEMENT DETAIL SECTIONS
		VERT. N.T.S. SCALE: HORIZ. N.T.S. DATE: 11 / 17 / 05	

F.A. RTE.	SECTION	COUNTY	TOTAL SHEETS	SHEET NO.
IL 43	03-00047-00-SW	COOK	20	8
STA. 2+54.37		TO STA. 4+00.00		
FED. ROAD DIST. NO.		ILLINOIS FED. AID PROJECT		
CONTRACT NO. 83830				



MATCHLINE STA 4+00, SEE SHT 9



LEGEND

-- CURB REMOVAL, COMBINATION CURB AND GUTTER REMOVAL, OR SIDEWALK REMOVAL

Globetrotters[®]
 Engineering Corporation
 ENGINEERS ARCHITECTS
 300 South Wacker Drive
 Chicago, Illinois 60606

Village of Bridgeview
 Illinois
 Steven M. Landek, Mayor

REVISIONS	
NAME	DATE

ILLINOIS DEPARTMENT OF TRANSPORTATION
 SIDEWALK IMPROVEMENT
 PLAN
 STA 2+54.37 TO STA 4+00.00

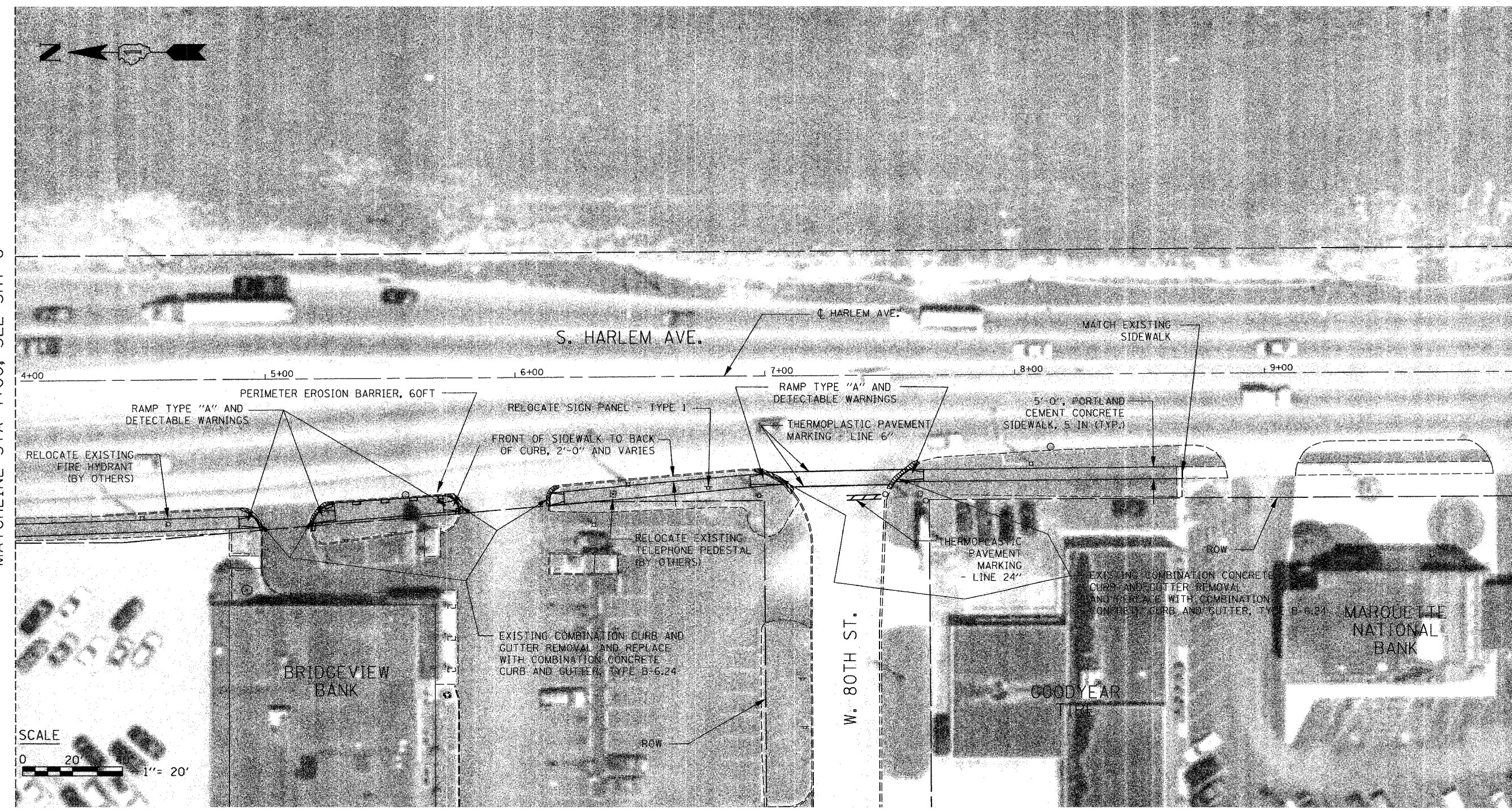
SCALE: VERT. 1" = 20'
 HORIZ. 1" = 20'
 DATE: 11 / 17 / 05

DRAWN BY: B.C.
 CHECKED BY: C.G.

F.A. - RTE.	SECTION	COUNTY	TOTAL SHEETS	SHEET NO.
IL 43	03-00047-00-SW	COOK	20	9
STA. 4+00.00		TO STA. 10+00.00		
FED. ROAD DIST. NO. 1		ILLINOIS FED. AID PROJECT		
CONTRACT NO. 83830				

MATCHLINE STA 4+00, SEE SHT 8

MATCHLINE STA 10+00, SEE SHT 10



LEGEND

-- CURB REMOVAL, COMBINATION CURB AND GUTTER REMOVAL, OR SIDEWALK REMOVAL

Globetrotters®
Engineering Corporation
ENGINEERS ARCHITECTS
300 South Wacker Drive
Chicago, Illinois 60606

Village of Bridgeview
Illinois
Steven M. Landek, Mayor

REVISIONS	
NAME	DATE

ILLINOIS DEPARTMENT OF TRANSPORTATION
SIDEWALK IMPROVEMENT
PLAN
STA 4+00.00 TO STA 10+00.00

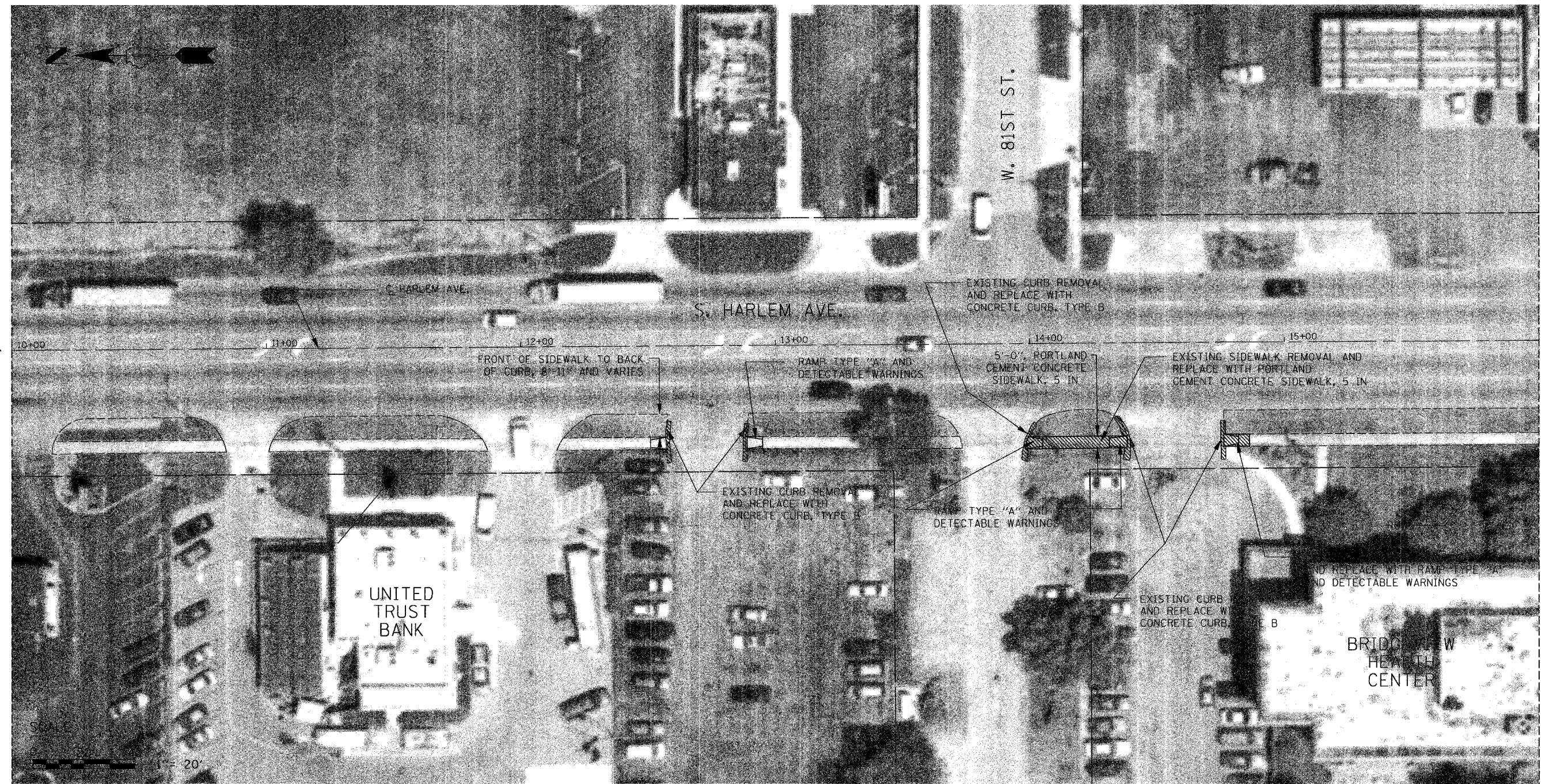
SCALE: VERT. 1" = 20'
HORIZ. 1" = 20'
DATE: 11 / 17 / 05

DRAWN BY: B.C.
CHECKED BY: C.G.

F.A. RTE.	SECTION	COUNTY	TOTAL SHEETS	SHEET NO.
IL 43	03-00047-00-SW	COOK	20	10
STA. 10+00.00	TO STA. 16+00.00			
FED. ROAD DIST. NO.	ILLINOIS	FED. AID PROJECT		
CONTRACT NO. 83830				

MATCHLINE STA 10+00, SEE SHT 9

MATCHLINE STA 16+00, SEE SHT 11



LEGEND

-- CURB REMOVAL, COMBINATION CURB AND GUTTER REMOVAL, OR SIDEWALK REMOVAL

Globetrotters[®]
 Engineering Corporation
 ENGINEERS ARCHITECTS
 300 South Wacker Drive
 Chicago, Illinois 60606



Village of Bridgeview
 Illinois
 Steven M. Landek, Mayor

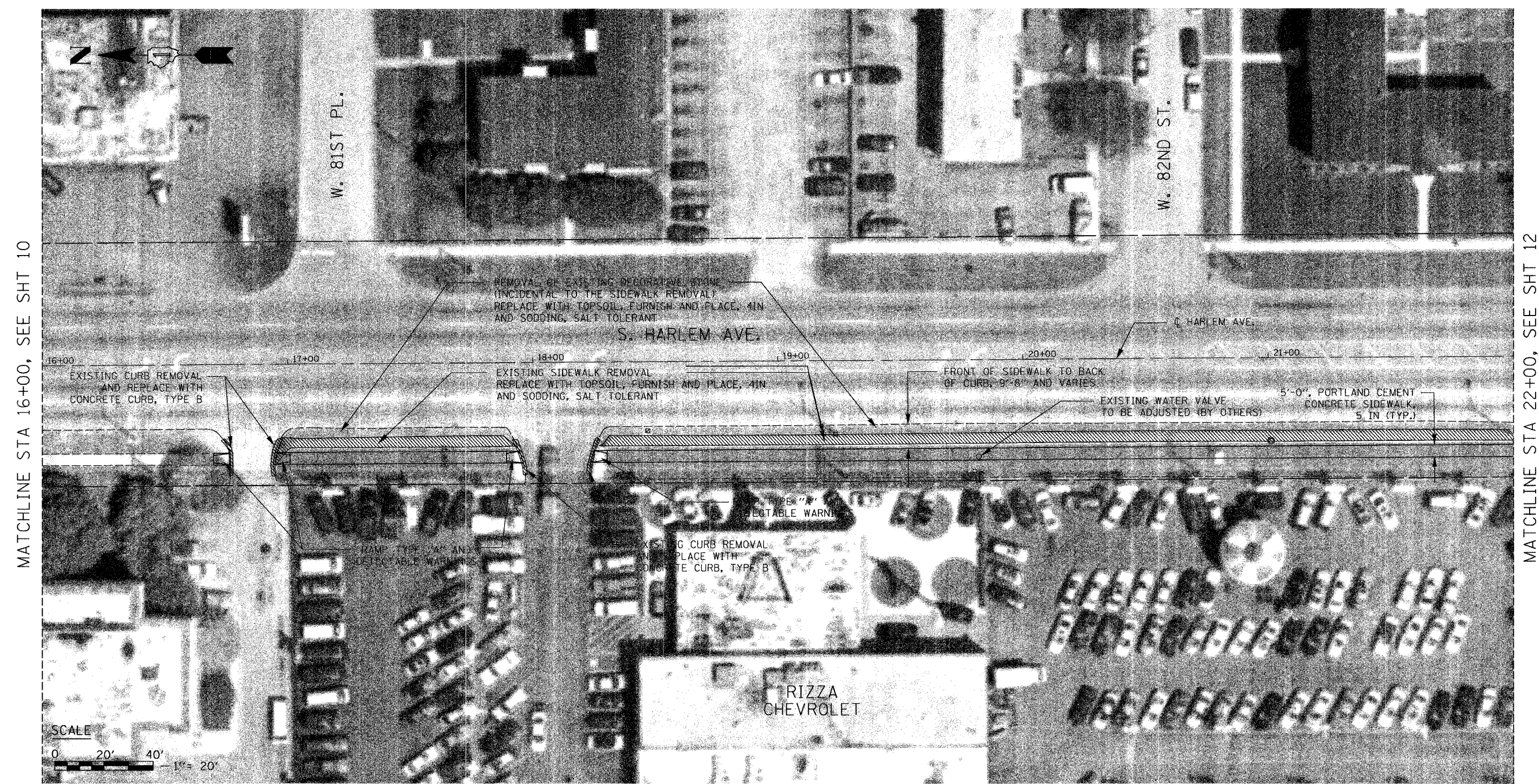
REVISIONS	
NAME	DATE

ILLINOIS DEPARTMENT OF TRANSPORTATION
 SIDEWALK IMPROVEMENT
 PLAN
 STA 10+00.00 TO STA 16+00.00

SCALE: VERT. 1" = 20'
 HORIZ. 1" = 20'
 DATE: 11 / 17 / 05

DRAWN BY: B.C.
 CHECKED BY: C.G.

F.A. RTE.	SECTION	COUNTY	TOTAL SHEETS	SHEET NO.
IL 43	03-00047-00-SW	COOK	20	11
STA. 16+00.00		TO STA. 22+00.00		
FED. ROAD DIST. NO. 1		ILLINOIS FED. AID PROJECT		
CONTRACT NO. 83830				



MATCHLINE STA 16+00, SEE SHT 10

MATCHLINE STA 22+00, SEE SHT 12



LEGEND

-- CURB REMOVAL, COMBINATION CURB AND GUTTER REMOVAL, OR SIDEWALK REMOVAL

Globetrotters[®]
 Engineering Corporation
 ENGINEERS ARCHITECTS
 300 South Wacker Drive
 Chicago, Illinois 60606

Village of Bridgeview
 Illinois
 Steven M. Landek, Mayor

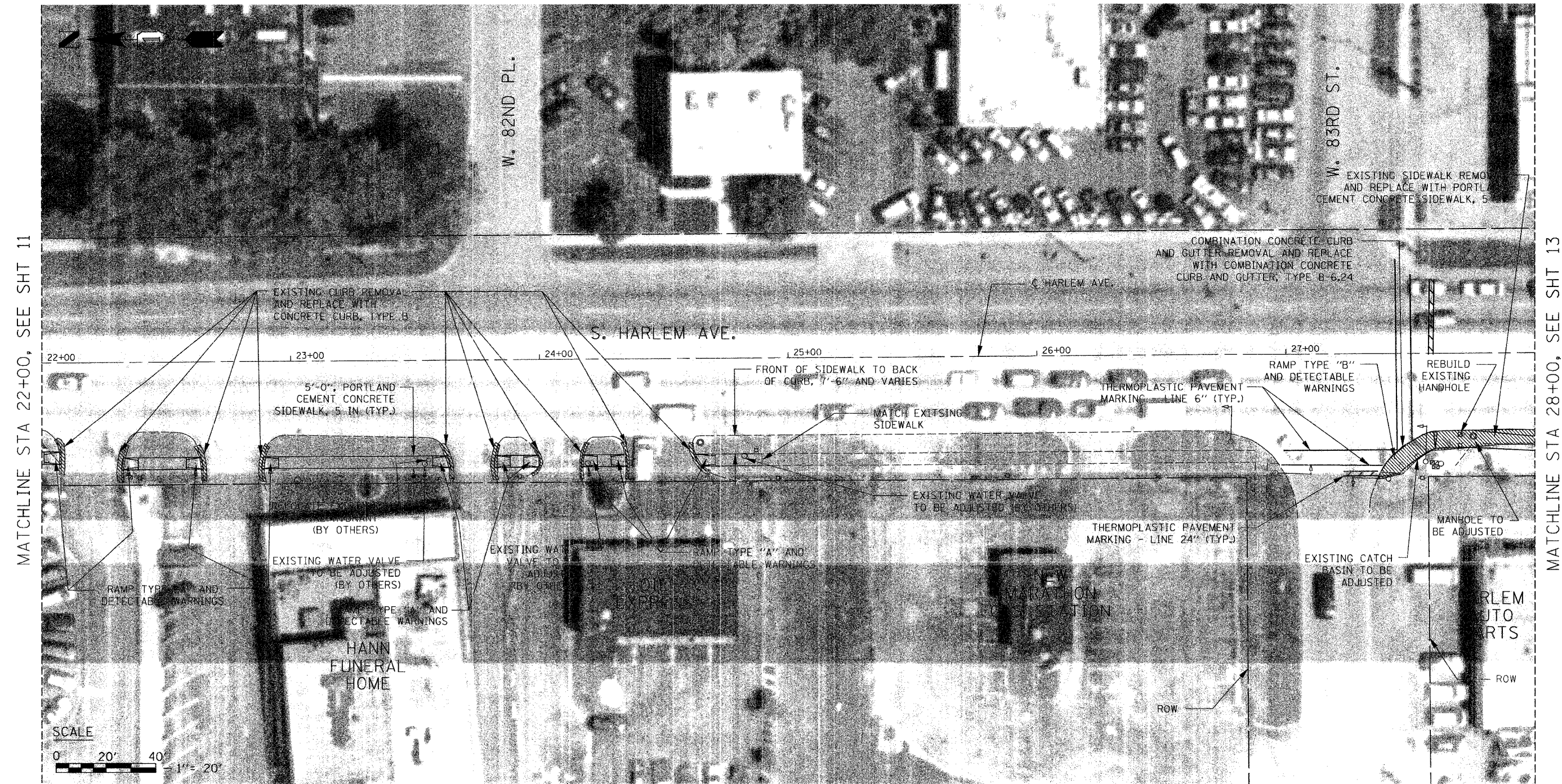
REVISIONS	
NAME	DATE

ILLINOIS DEPARTMENT OF TRANSPORTATION
 SIDEWALK IMPROVEMENT
 PLAN
 STA 16+00.00 TO STA 22+00.00


SCALE: VERT. 1" = 20'
 HORIZ. 1" = 20'
 DATE: 11 / 17 / 05

DRAWN BY: B.C.
 CHECKED BY: C.G.

F.A. RTE.	SECTION	COUNTY	TOTAL SHEETS	SHEET NO.
IL 43	03-00047-00-SW	COOK	20	12
STA. 22+00.00		TO STA. 28+00.00		
FED. ROAD DIST. NO.		ILLINOIS	FED. AID PROJECT	
CONTRACT NO. 83830				



LEGEND

 CURB REMOVAL, COMBINATION CURB AND GUTTER REMOVAL, OR SIDEWALK REMOVAL

Globetrotters[®]
 Engineering Corporation
 ENGINEERS ARCHITECTS
 300 South Wacker Drive
 Chicago, Illinois 60606

Village of Bridgeview
 Illinois
 Steven M. Landek, Mayor

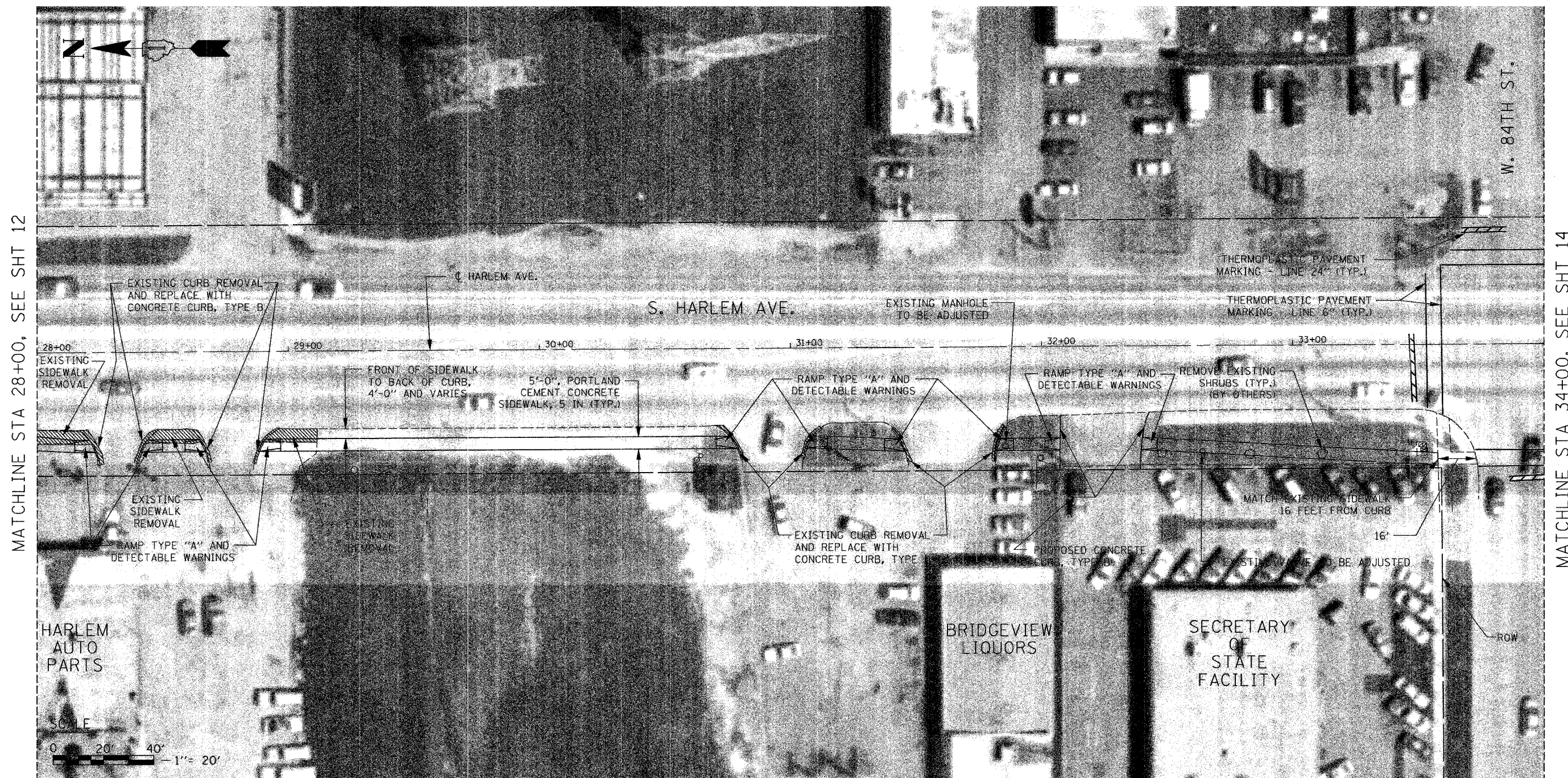
REVISIONS	
NAME	DATE

ILLINOIS DEPARTMENT OF TRANSPORTATION
 SIDEWALK IMPROVEMENT
 PLAN
 STA 22+00.00 TO STA 28+00.00


SCALE: VERT. 1" = 20'
 HORIZ. 1" = 20'
 DATE: 11 / 17 / 05

DRAWN BY: B.C.
 CHECKED BY: C.G.

F.A. - RTE.	SECTION	COUNTY	TOTAL SHEETS	SHEET NO.
IL 43	03-00047-00-SW	COOK	20	13
STA. 28+00.00		TO STA. 34+00.00		
FED. ROAD DIST. NO. 1		ILLINOIS FED. AID PROJECT		
CONTRACT NO. 83830				



LEGEND

 -- CURB REMOVAL, COMBINATION CURB AND GUTTER REMOVAL, OR SIDEWALK REMOVAL



Globetrotters®
Engineering Corporation
ENGINEERS ARCHITECTS
300 South Wacker Drive
Chicago, Illinois 60606



**Village of
Bridgeview**
Illinois
Steven M. Landek, Mayor

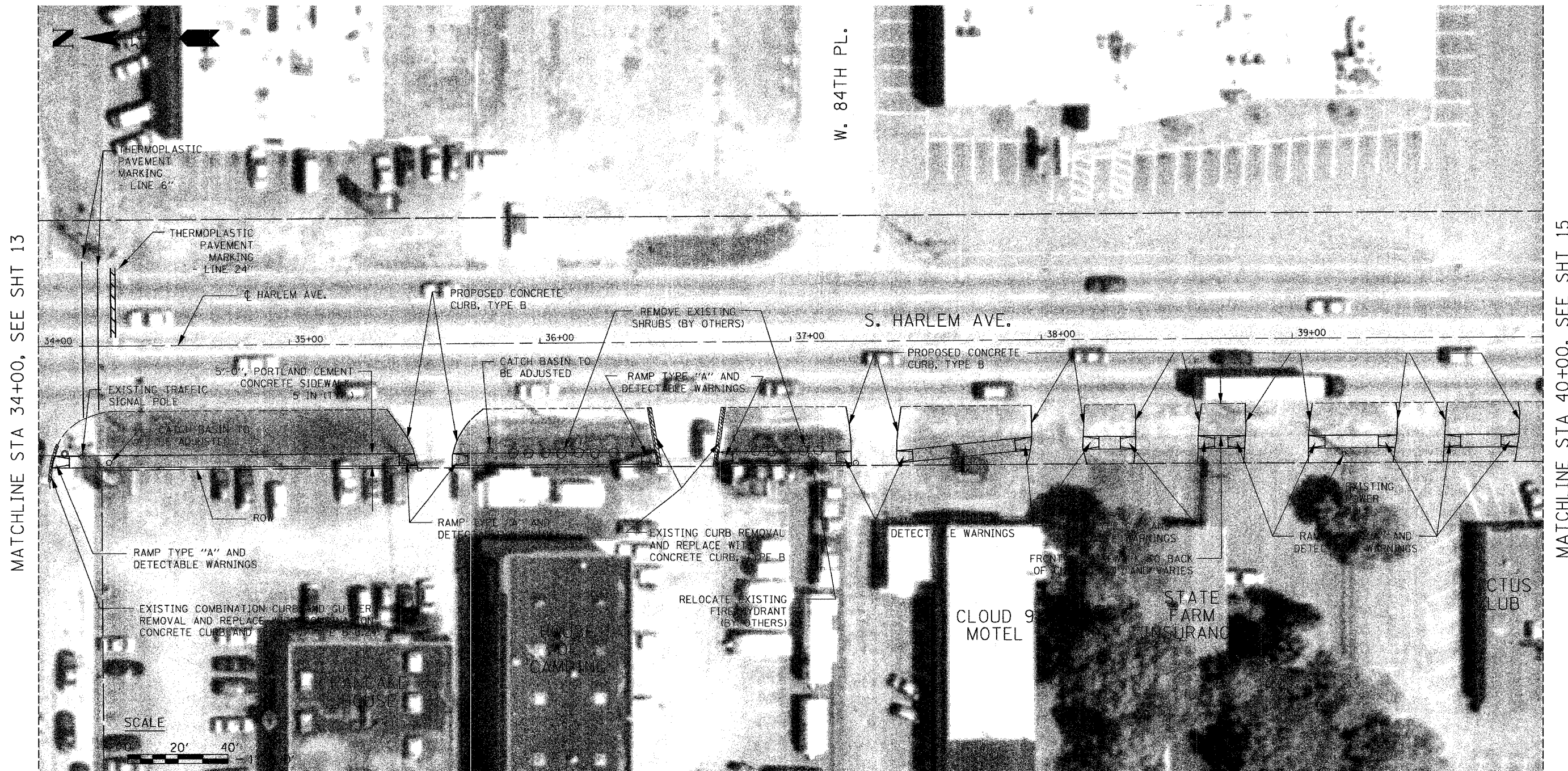
REVISIONS	
NAME	DATE

ILLINOIS DEPARTMENT OF TRANSPORTATION
SIDEWALK IMPROVEMENT
PLAN
STA 28+00.00 TO STA 34+00.00

SCALE: VERT. 1" = 20'
HORIZ. 1" = 20'
DATE: 11 / 17 / 05

DRAWN BY: B.C.
CHECKED BY: C.G.

F.A. RTE.	SECTION	COUNTY	TOTAL SHEETS	SHEET NO.
IL 43	03-00047-00-5W	COOK	20	14
STA. 34+00.00		TO STA. 40+00.00		
FED. ROAD DIST. NO.		ILLINOIS FED. AID PROJECT		
CONTRACT NO. 83830				



MATCHLINE STA 34+00, SEE SHT 13

MATCHLINE STA 40+00, SEE SHT 15

LEGEND

-- CURB REMOVAL, COMBINATION CURB AND GUTTER REMOVAL, OR SIDEWALK REMOVAL



Globetrotters[®]
 Engineering Corporation
 ENGINEERS ARCHITECTS
 300 South Wacker Drive
 Chicago, Illinois 60606



Village of Bridgeview
 Illinois
 Steven M. Landek, Mayor

REVISIONS	
NAME	DATE

ILLINOIS DEPARTMENT OF TRANSPORTATION
 SIDEWALK IMPROVEMENT
 PLAN
 STA 34+00.00 TO STA 40+00.00

SCALE: VERT. 1" = 20'
 HORIZ. 1" = 20'
 DATE: 11 / 17 / 05

DRAWN BY: B.C.
 CHECKED BY: C.G.

F.A. RTE.	SECTION	COUNTY	TOTAL SHEETS	SHEET NO.
IL 43	03-00047-00-SW	COOK	20	15
STA. 40+00.00		TO STA. 46+00.00		
FED. ROAD DIST. NO. 1		ILLINOIS FED. AID PROJECT		
CONTRACT NO. 83830				



- NOTES**
- FOR SECTION A-A, SEE SHEET 7.
 - ALL PROPOSED DRIVEWAY CONCRETE CURB, TYPE B RADII TO BE HALF THE DISTANCE FROM BACK OF HARLEM AVE. EXISTING CURB TO BACK OF PROPOSED PORTLAND CEMENT CONCRETE SIDEWALK, 5 IN

LEGEND

	-- PROPOSED BITUMINOUS CONCRETE PAVEMENT REMOVAL (FULL-DEPTH) (SAW CUTS INCIDENTAL)
	-- CURB REMOVAL, COMBINATION CURB AND GUTTER REMOVAL, OR SIDEWALK REMOVAL

Globetrotters[®]
 Engineering Corporation
 ENGINEERS ARCHITECTS
 300 South Wacker Drive
 Chicago, Illinois 60606

Village of Bridgeview
 Illinois
 Steven M. Landek, Mayor

REVISIONS	
NAME	DATE

ILLINOIS DEPARTMENT OF TRANSPORTATION
 SIDEWALK IMPROVEMENT
 PLAN
 STA 40+00.00 TO STA 46+00.00

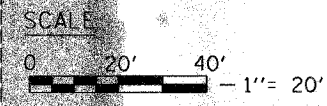
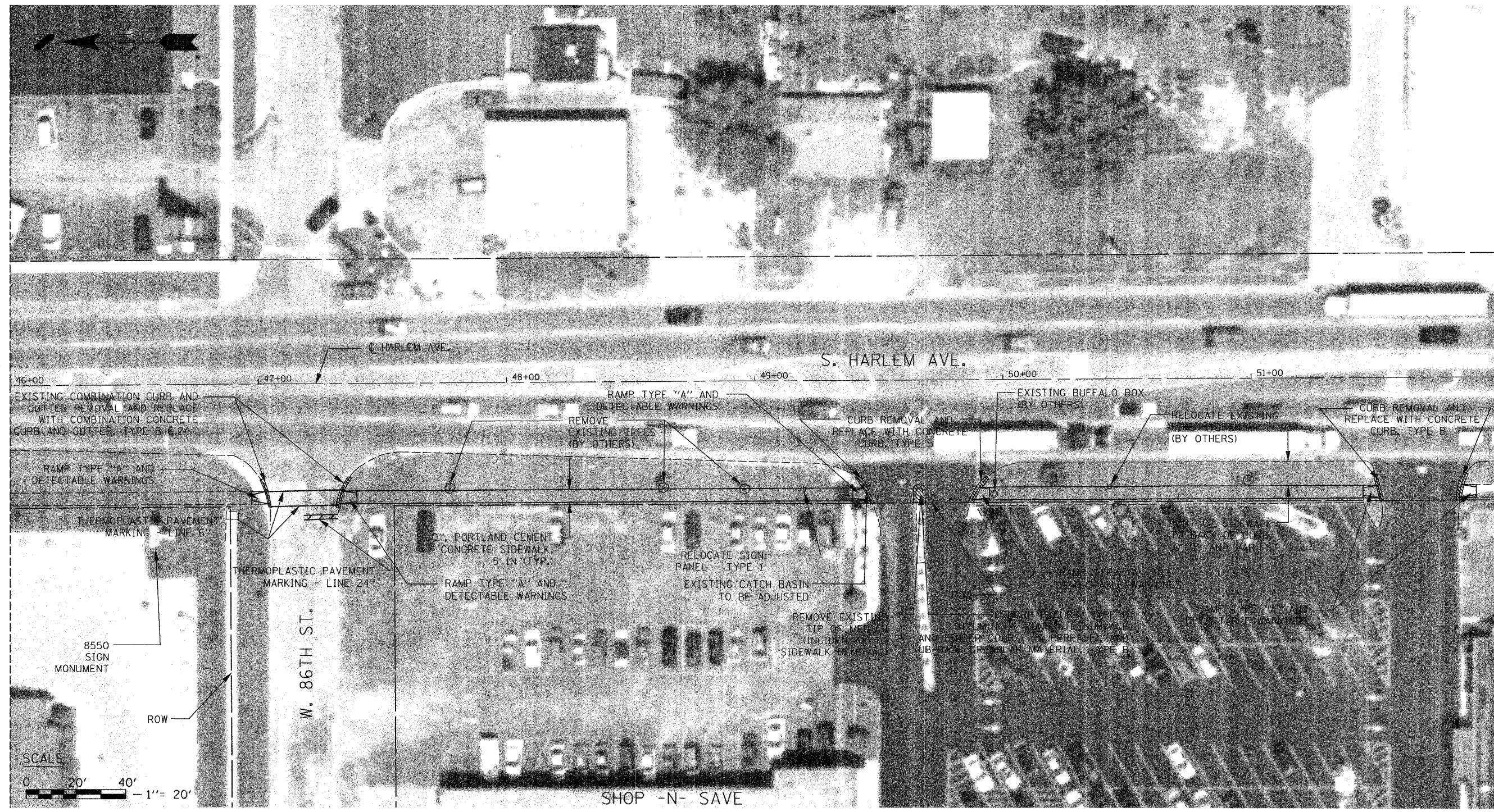
SCALE: VERT. 1" = 20'
 HORIZ. 1" = 20'
 DATE: 11 / 17 / 05

DRAWN BY: B.C.
 CHECKED BY: C.G.

F.A. RTE.	SECTION	COUNTY	TOTAL SHEETS	SHEET NO.
IL 43	03-00047-00-SW	COOK	20	16
STA. 46+00.00		TO STA. 52+00.00		
FED. ROAD DIST. NO.	ILLINOIS	FED. AID PROJECT		
CONTRACT NO. 83830				

MATCHLINE STA 46+00, SEE SHT 15

MATCHLINE STA 52+00, SEE SHT 17



LEGEND

-- CURB REMOVAL, COMBINATION CURB AND GUTTER REMOVAL, OR SIDEWALK REMOVAL

Globetrotters®
 Engineering Corporation
 ENGINEERS ARCHITECTS
 300 South Wacker Drive
 Chicago, Illinois 60606

Village of Bridgeview
 Illinois
 Steven M. Landek, Mayor

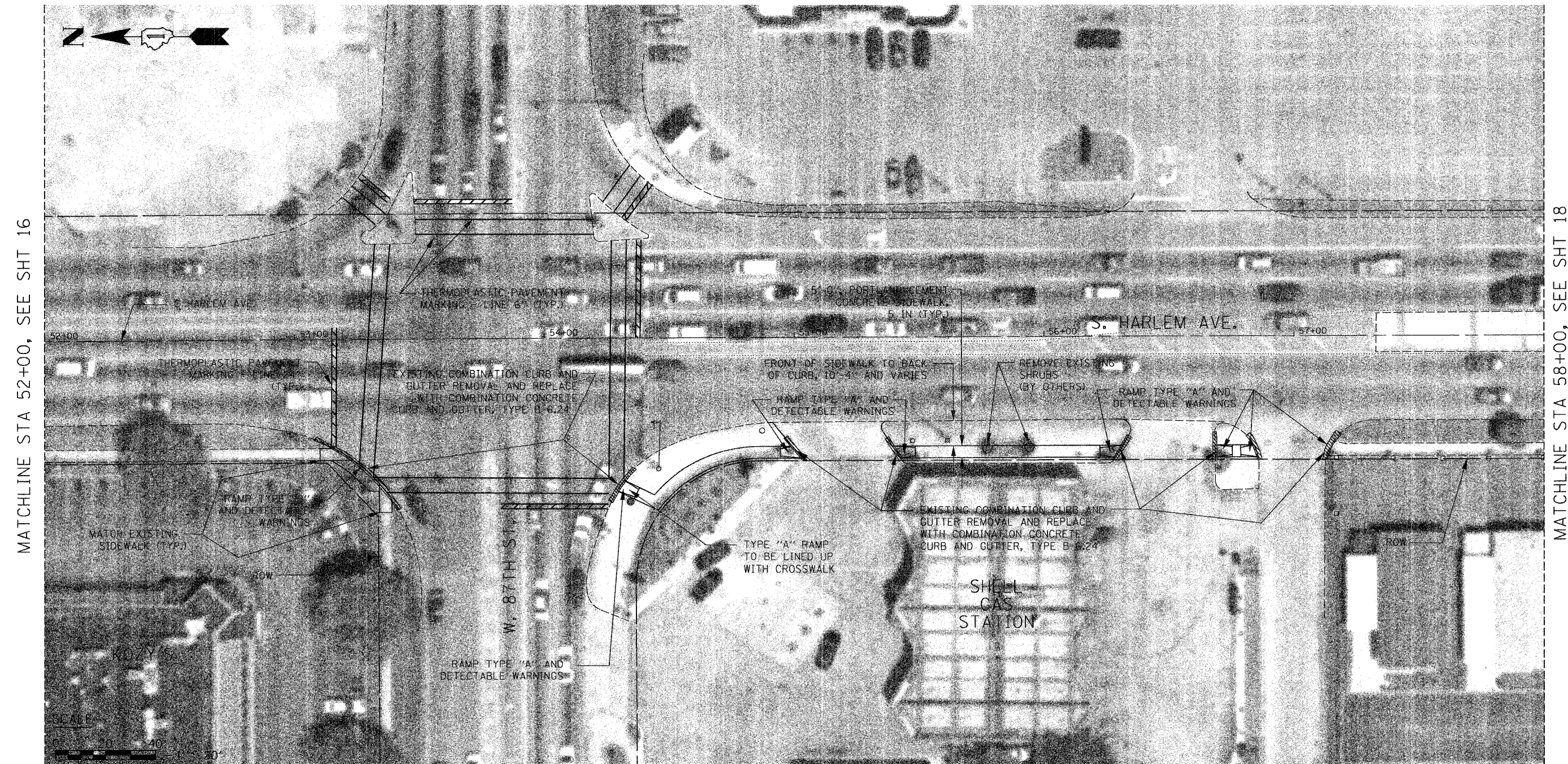
REVISIONS	
NAME	DATE

ILLINOIS DEPARTMENT OF TRANSPORTATION
 SIDEWALK IMPROVEMENT
 PLAN
 STA 46+00.00 TO STA 52+00.00

SCALE: VERT. 1" = 20'
 HORIZ. 1" = 20'
 DATE: 11 / 17 / 05

DRAWN BY: B.C.
 CHECKED BY: C.G.

F.A. RTE.	SECTION	COUNTY	TOTAL SHEETS	SHEET NO.
IL 43	03-00047-00-SW	COOK	20	17
STA. 52+00.00		TO STA. 58+00.00		
FED. ROAD DIST. NO.	ILLINOIS	FED. AID PROJECT		
CONTRACT NO. 83830				



MATCHLINE STA 52+00, SEE SHT 16

MATCHLINE STA 58+00, SEE SHT 18

LEGEND

	-- CURB REMOVAL, COMBINATION CURB AND GUTTER REMOVAL, OR SIDEWALK REMOVAL
--	---

Globetrotters[®]
 Engineering Corporation
 ENGINEERS ARCHITECTS
 300 South Wacker Drive
 Chicago, Illinois 60606

Village of Bridgeview
 Illinois
 Steven M. Landek, Mayor

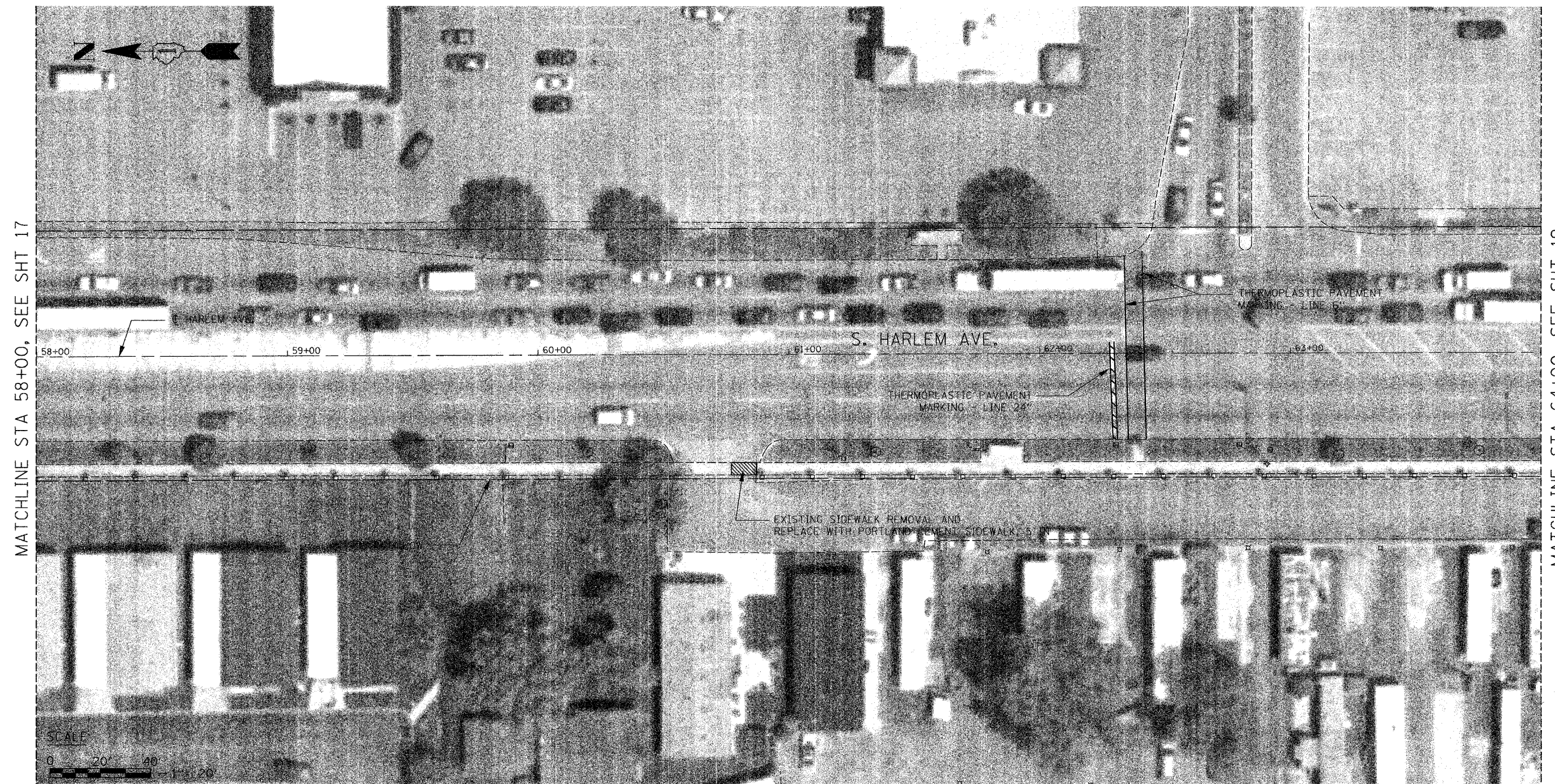
REVISIONS	
NAME	DATE

ILLINOIS DEPARTMENT OF TRANSPORTATION
 SIDEWALK IMPROVEMENT
 PLAN
 STA 52+00.00 TO STA 58+00.00

VERT. 1" = 20'
 SCALE: HORIZ. 1" = 20'
 DATE: 11 / 17 / 05

DRAWN BY: B.C.
 CHECKED BY: C.G.

F.A. RTE.	SECTION	COUNTY	TOTAL SHEETS	SHEET NO.
IL 43	03-00047-00-SW	COOK	20	18
STA. 58+00.00		TO STA. 64+00.00		
FED. ROAD DIST. NO.	ILLINOIS	FED. AID PROJECT		
CONTRACT NO. 83830				



LEGEND

-- CURB REMOVAL, COMBINATION CURB AND GUTTER REMOVAL, OR SIDEWALK REMOVAL

Globetrotters[®]
 Engineering Corporation
 ENGINEERS ARCHITECTS
 300 South Wacker Drive
 Chicago, Illinois 60606

Village of Bridgeview
 Illinois
 Steven M. Landek, Mayor

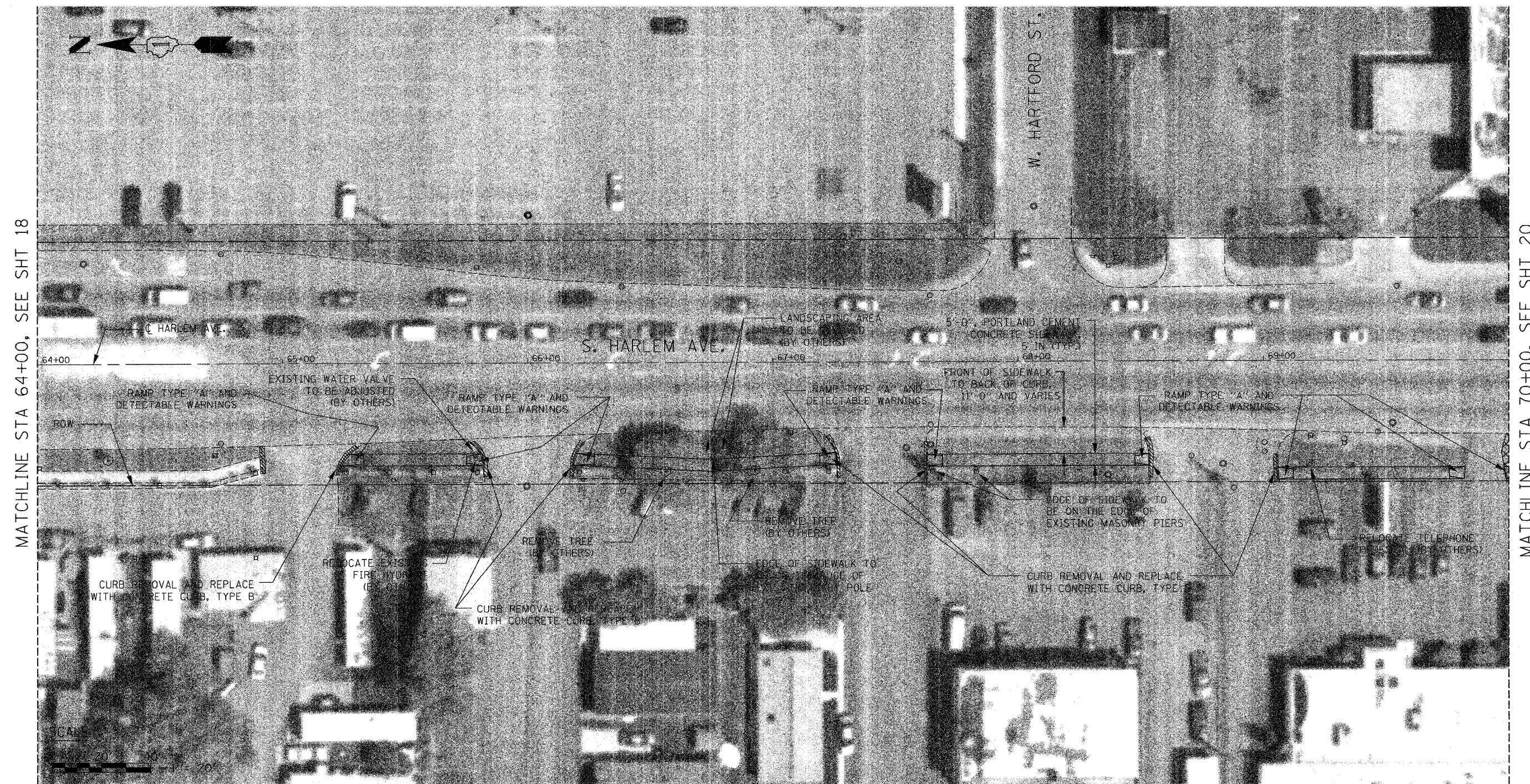
REVISIONS	
NAME	DATE

ILLINOIS DEPARTMENT OF TRANSPORTATION
 SIDEWALK IMPROVEMENT
 PLAN
 STA 58+00.00 TO STA 64+00.00

VERT. 1" = 20'
 SCALE: HORIZ. 1" = 20'
 DATE: 11 / 17 / 05

DRAWN BY: B.C.
 CHECKED BY: C.G.

F.A. RTE.	SECTION	COUNTY	TOTAL SHEETS	SHEET NO.
IL 43	03-00047-00-SW	COOK	20	19
STA. 64+00.00		TO STA. 70+00.00		
FED. ROAD DIST. NO. ILLINOIS		FED. AID PROJECT		
CONTRACT NO. 83830				



MATCHLINE STA 64+00, SEE SHT 18

MATCHLINE STA 70+00, SEE SHT 20

LEGEND

CURB REMOVAL, COMBINATION CURB AND GUTTER REMOVAL, OR SIDEWALK REMOVAL

Globetrotters[®]
 Engineering Corporation
 ENGINEERS ARCHITECTS
 300 South Wacker Drive
 Chicago, Illinois 60606

Village of Bridgeview
 Illinois
 Steven M. Landek, Mayor

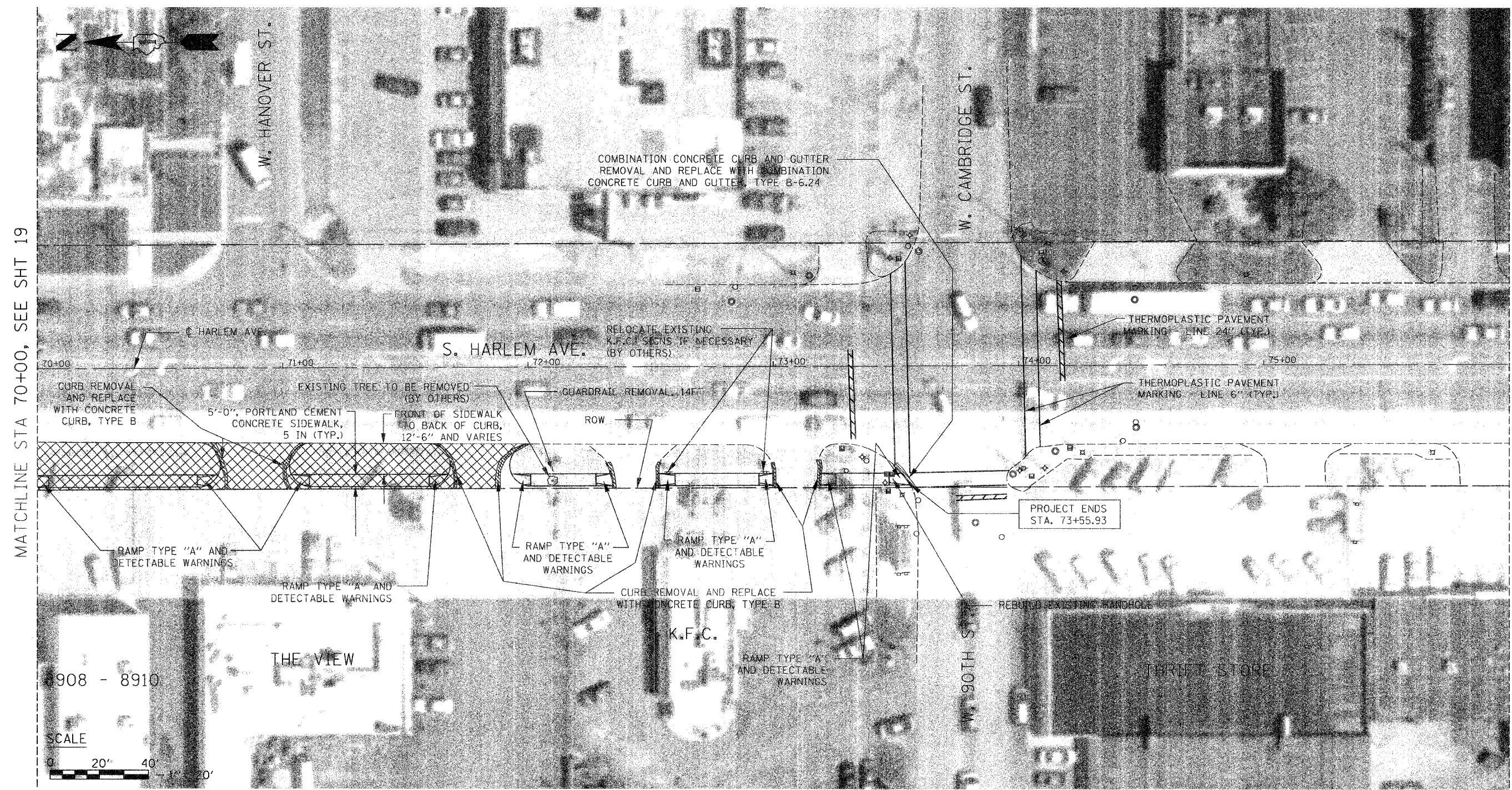
REVISIONS	
NAME	DATE

ILLINOIS DEPARTMENT OF TRANSPORTATION
 SIDEWALK IMPROVEMENT
 PLAN
 STA 64+00.00 TO STA 70+00.00

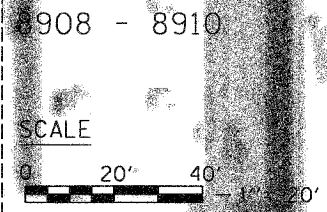
VERT. 1" = 20'
 SCALE: HORIZ. 1" = 20'
 DATE: 11 / 17 / 05

DRAWN BY: B.C.
 CHECKED BY: C.G.

F.A. RTE.	SECTION	COUNTY	TOTAL SHEETS	SHEET NO.
IL 43	03-00047-00-SW	COOK	20	20
STA. 70+00.00		TO STA. 73+55.93		
FED. ROAD DIST. NO.	ILLINOIS	FED. AID PROJECT		
CONTRACT NO. 83830				



MATCHLINE STA 70+00, SEE SHT 19



NOTES

1. ALL PROPOSED DRIVEWAY CONCRETE CURB, TYPE B RADII TO BE HALF THE DISTANCE FROM BACK OF HARLEM AVE. EXISTING CURB TO BACK OF PROPOSED PORTLAND CEMENT CONCRETE SIDEWALK, 5 IN

LEGEND

- PROPOSED BITUMINOUS CONCRETE PAVEMENT REMOVAL (FULL-DEPTH) (SAW CUTS INCIDENTAL)
- CURB REMOVAL, COMBINATION CURB AND GUTTER REMOVAL, OR SIDEWALK REMOVAL

Globetrotters[®]
 Engineering Corporation
 ENGINEERS ARCHITECTS
 300 South Wacker Drive
 Chicago, Illinois 60606

Village of Bridgeview
 Illinois
 Steven M. Landek, Mayor

REVISIONS	
NAME	DATE

ILLINOIS DEPARTMENT OF TRANSPORTATION
 SIDEWALK IMPROVEMENT
 PLAN
 STA 70+00.00 TO STA 73+55.93

VERT. 1" = 20'
 SCALE: HORIZ. 1" = 20'
 DATE: 11 / 17 / 05

DRAWN BY: B.C.
 CHECKED BY: C.G.