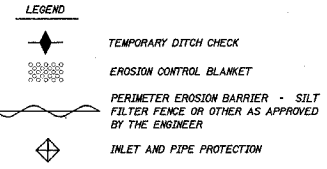
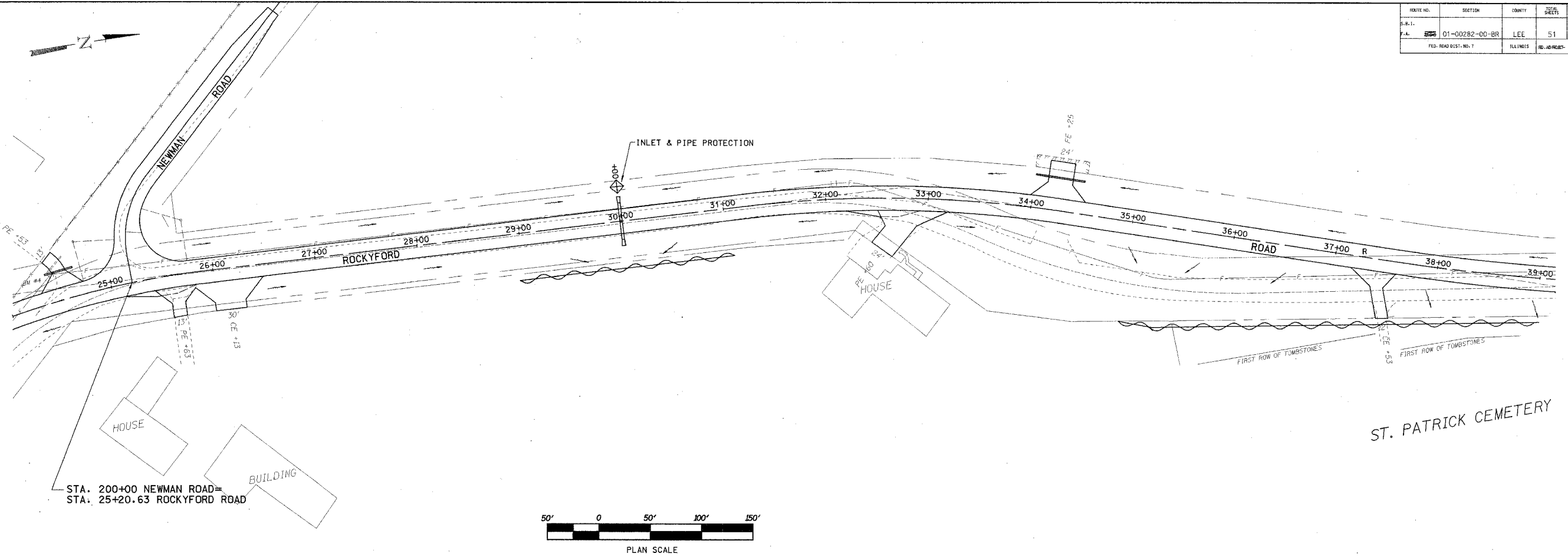


ROUTE NO.	SECTION	COUNTY	TOTAL SHEETS	SHEET NO.
S.B.1.				
F.A. 506	01-00282-00-BR	LEE	51	8
FED. ROAD DIST. NO. 7		ILLINOIS		



NOTE: ALL ITEMS SHALL BE CONSTRUCTED AS SHOWN ON STANDARD 280001 AND AS DIRECTED BY THE ENGINEER. MAINTENANCE AND CLEANING OF THE EROSION CONTROL ITEMS SHALL BE INCLUDED IN THE RESPECTIVE EROSION CONTROL PAY ITEM.

**DESCRIPTION OF STABILIZATION PRACTICES DURING CONSTRUCTION.**

- I. DURING CONSTRUCTION, AREAS OUTSIDE THE CONSTRUCTION LIMITS AS OUTLINED PREVIOUSLY HEREIN SHALL BE PROTECTED. THE CONTRACTOR SHALL NOT USE THIS AREA FOR STAGING (EXCEPT AS DESCRIBED ON THE PLANS AND DIRECTED BY THE ENGINEER), PARKING OF VEHICLES OR CONSTRUCTION EQUIPMENT, STORAGE OF MATERIALS, OR OTHER CONSTRUCTION RELATED ACTIVITIES.
  - (a) WITHIN THE CONSTRUCTION LIMITS, AREAS WHICH MAY BE SUSCEPTIBLE TO EROSION AS DETERMINED BY THE ENGINEER SHALL REMAIN UNDISTURBED UNTIL FULL SCALE CONSTRUCTION IS UNDERWAY TO PREVENT UNNECESSARY SOIL EROSION.
  - (b) EARTH STOCKPILES SHALL BE TEMPORARILY SEEDED IF THEY ARE TO REMAIN UNUSED FOR MORE THAN FOURTEEN DAYS.
  - (c) AS CONSTRUCTION PROCEEDS, THE CONTRACTOR SHALL INSTITUTE THE FOLLOWING AS DIRECTED BY THE ENGINEER:
    - I. PLACE TEMPORARY EROSION CONTROL FACILITIES AT LOCATIONS SHOWN ON THE PLANS.
    - II. TEMPORARILY SEED ERODABLE BARE EARTH ON A WEEKLY BASIS TO MINIMIZE THE AMOUNT OF ERODABLE SURFACE AREA WITHIN THE CONTRACT LIMITS USING SEEDING CLASS 7.
    - III. CONSTRUCT ROADSIDE DITCHES AND PROVIDE TEMPORARY EROSION CONTROL SYSTEMS.
    - IV. TEMPORARILY DIVERT WATER AROUND PROPOSED CULVERT LOCATIONS.
    - V. BUILD NECESSARY EMBANKMENT AT CULVERT LOCATIONS AND THEN EXCAVATE AND PLACE CULVERT.
    - VI. CONTINUE BUILDING UP THE EMBANKMENT TO THE PROPOSED GRADE WHILE AT THE SAME TIME, PLACING PERMANENT EROSION CONTROL SUCH AS RIPRAP DITCH LINING AND CONDUCTING FINAL SHAPING TO THE SLOPES.
  - (d) EXCAVATED AREAS AND EMBANKMENT SHALL BE PERMANENTLY SEEDED IMMEDIATELY AFTER FINAL GRADING. IF NOT, THEY SHALL BE TEMPORARILY SEEDED IF NO CONSTRUCTION ACTIVITY IN THE AREA IS PLANNED FOR SEVEN DAYS.
  - (e) CONSTRUCTION EQUIPMENT SHALL BE STORED AND FUELED ONLY AT DESIGNED LOCATIONS. ALL NECESSARY MEASURES SHALL BE TAKEN TO CONTAIN ANY FUEL OR OTHER POLLUTANT IN ACCORDANCE WITH EPA WATER QUALITY REGULATIONS. LEAKING EQUIPMENT OR SUPPLIES SHALL BE IMMEDIATELY REPAIRED OR REMOVED FROM THE SITE.
  - (f) THE RESIDENT ENGINEER SHALL INSPECT THE PROJECT DAILY DURING CONSTRUCTION ACTIVITIES. INSPECTION SHALL ALSO BE DONE WEEKLY AND AFTER RAINS OF 1/4 INCH OR GREATER OR EQUIVALENT SNOWFALL AND DURING THE WINTER SHUTDOWN PERIOD. THE PROJECT SHALL ADDITIONALLY BE INSPECTED BY THE CONSTRUCTION FIELD ENGINEER ON A BI-WEEKLY BASIS TO DETERMINE THAT EROSION CONTROL EFFORTS ARE IN PLACE AND EFFECTIVE AND IF OTHER EROSION CONTROL WORK IS NECESSARY.

- (g) SEDIMENT COLLECTED DURING CONSTRUCTION OF THE VARIOUS TEMPORARY EROSION CONTROL SYSTEMS SHALL BE DISPOSED OF ON THE SITE ON A REGULAR BASIS AS DIRECTED BY THE ENGINEER. THE COST OF THIS MAINTENANCE SHALL BE INCLUDED IN THE UNIT BID PRICE FOR EARTH EXCAVATION FOR EROSION CONTROL.
- (h) THE TEMPORARY EROSION CONTROL SYSTEM SHALL BE REMOVED AS DIRECTED BY THE ENGINEER AFTER USE IS NO LONGER NEEDED OR NO LONGER FUNCTIONING. THE COST OF THIS REMOVAL SHALL BE INCLUDED IN THE UNIT BID PRICE FOR VARIOUS TEMPORARY EROSION CONTROL PAY ITEMS.

**DESCRIPTION OF STRUCTURAL PRACTICES AFTER FINAL GRADING.**

- I. TEMPORARY EROSION CONTROL SYSTEMS SHALL BE LEFT IN PLACE WITH PROPER MAINTENANCE UNTIL PERMANENT EROSION CONTROL IS IN PLACE AND WORKING PROPERLY AND ALL PROPOSED TURF AREAS SEEDED AND ESTABLISHED.
- II. ONCE PERMANENT EROSION CONTROL SYSTEMS AS PROPOSED IN THE PLANS ARE FUNCTIONAL AND ESTABLISHED, TEMPORARY ITEMS SHALL BE REMOVED, CLEANED UP, AND DISTURBED TURF RESEDED.

**MAINTENANCE AFTER CONSTRUCTION.**

- I. CONSTRUCTION IS COMPLETE AFTER ACCEPTANCE BY I.D.O.T. FINAL INSPECTION. MAINTENANCE UP TO THIS DATE WILL BE BY THE CONTRACTOR.

**MISCELLANEOUS:**

- I. TEMPORARY DITCH CHECKS SHALL BE LOCATED AS SHOWN ON THE PLANS, OR AS DIRECTED BY THE ENGINEER.
- II. TEMPORARY EROSION CONTROL SEEDING SHALL BE SEEDING CLASS 7.
- III. STRAW BALES, HAY BALES, PERIMETER EROSION BARRIER AND SILT FENCES WILL BE PERMITTED FOR TEMPORARY OR PERMANENT DITCH CHECKS. DITCH CHECKS MAY BE COMPOSED OF AGGREGATE, SILT PANELS, ROLLED EXCELSTOR, URETHANE FOAM/GEOTEXTILE (SILT SEDGES), AND/OR ANY OTHER MATERIAL APPROVED BY THE EROSION AND SEDIMENT CONTROL COORDINATOR.
- IV. SEDIMENT COLLECTED DURING CONSTRUCTION BY THE VARIOUS TEMPORARY EROSION CONTROL SYSTEMS SHALL BE DISPOSED OF ON THE SITE ON A REGULAR BASIS, AS DIRECTED BY THE ENGINEER. THE COST OF THIS MAINTENANCE SHALL BE PAID FOR AT THE CONTRACT UNIT PRICE PER CUBIC YARD FOR EARTH EXCAVATION.
- V. ALL EROSION CONTROL PRODUCTS FURNISHED SHALL BE SPECIFICALLY RECOMMENDED BY THE MANUFACTURER FOR THE USE SPECIFIED IN THE EROSION CONTROL PLAN. PRIOR TO THE APPROVAL AND USE OF THE PRODUCT, THE CONTRACTOR SHALL SUBMIT TO THE ENGINEER A NOTARIZED CERTIFICATION BY THE PRODUCER STATING THE INTENDED USE OF THE PRODUCT AND THAT THE PHYSICAL PROPERTIES REQUIRED FOR THIS APPLICATION ARE MET OR EXCEEDED. THE CONTRACTOR SHALL PROVIDE MANUFACTURER INSTALLATION PROCEDURES TO FACILITATE THE ENGINEER IN CONSTRUCTION INSPECTION.

**STORM WATER POLLUTION PREVENTION PLAN**  
 WHA #1154D03