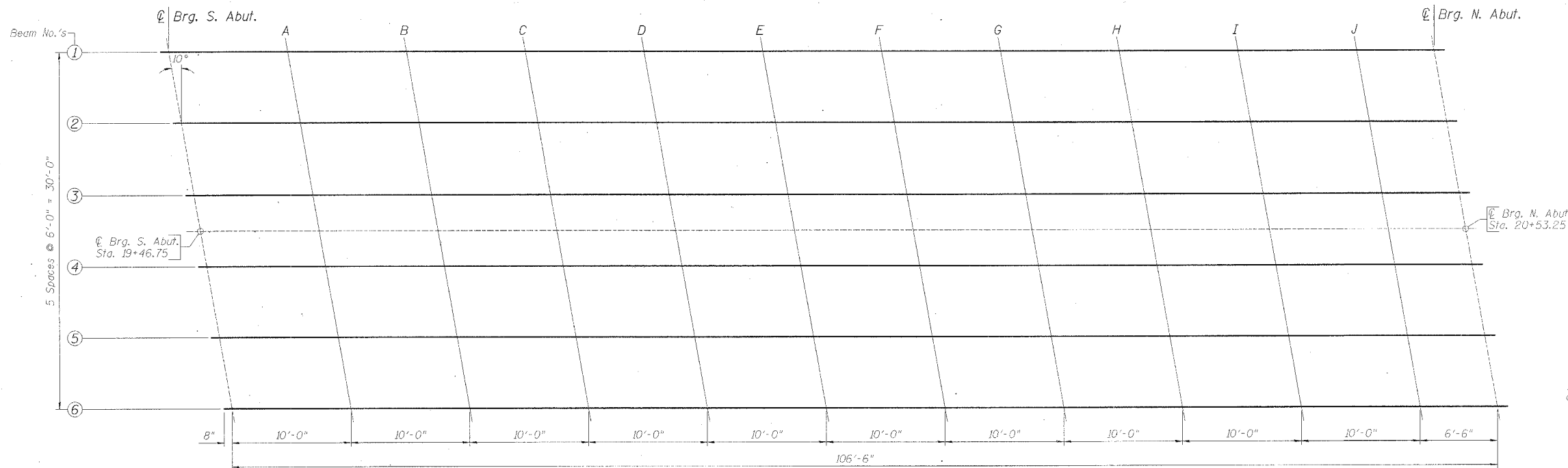
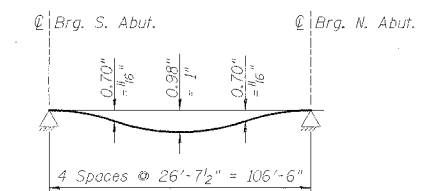


ROUTE NO.	SECTION	COUNTY	TOTAL SHEETS	SHEET NO.
51	01-00282-00-BR	LEE	51	16
FED. ROAD DIST. NO. 7		ALIGN.	FED. AID PROJECT	
STRUCTURAL SHEET 2 OF 15				

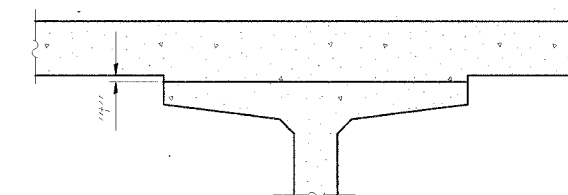


PLAN VIEW



**DEAD LOAD DEFLECTION DIAGRAM**  
(Includes weight of concrete slab only)

Note: The above deflections are not to be used in the field if the engineer is working from the grade elevations adjusted for dead load deflections as shown below.



To determine "h": After all precast prestressed beams have been erected, elevations of the top flanges of the beams shall be taken at intervals shown above. These elevations subtracted from the "Theoretical Grade Elevations Adjusted For Dead Load Deflections" minus slab thickness, equals the fillet heights "h" above top flanges of beams.

**FILLET HEIGHTS**

**WEST DECK EDGE**

Location	Station	Offset	Theoretical Grade Elevations	Theoretical Grade Elevations Adjusted For Dead Load Deflection
South Abutment	1943.576	18.00 Lt.	736.449	736.449
A	1953.576	18.00 Lt.	736.421	736.448
B	1963.576	18.00 Lt.	736.448	736.494
C	1973.576	18.00 Lt.	736.516	736.579
D	1983.576	18.00 Lt.	736.583	736.659
E	1993.576	18.00 Lt.	736.650	736.731
F	2003.576	18.00 Lt.	736.717	736.797
G	2013.576	18.00 Lt.	736.784	736.856
H	2023.576	18.00 Lt.	736.851	736.909
I	2033.576	18.00 Lt.	736.919	736.958
J	2043.576	18.00 Lt.	736.986	737.002
North Abutment	2050.076	18.00 Lt.	737.030	737.030

**CENTERLINE**

Location	Station	Offset	Theoretical Grade Elevations	Theoretical Grade Elevations Adjusted For Dead Load Deflection
South Abutment	1946.750	0.00	736.753	736.753
A	1956.750	0.00	736.728	736.752
B	1966.750	0.00	736.703	736.749
C	1976.750	0.00	736.678	736.742
D	1986.750	0.00	736.653	736.729
E	1996.750	0.00	736.628	736.709
F	2006.750	0.00	736.603	736.683
G	2016.750	0.00	736.578	736.650
H	2026.750	0.00	736.553	736.611
I	2036.750	0.00	736.528	736.567
J	2046.750	0.00	736.503	736.519
North Abutment	2053.250	0.00	736.487	736.487

**EAST DECK EDGE**

Location	Station	Offset	Theoretical Grade Elevations	Theoretical Grade Elevations Adjusted For Dead Load Deflection
South Abutment	1949.924	18.00 Rt.	736.433	736.433
A	1959.924	18.00 Rt.	736.408	736.432
B	1969.924	18.00 Rt.	736.383	736.429
C	1979.924	18.00 Rt.	736.358	736.421
D	1989.924	18.00 Rt.	736.333	736.408
E	1999.924	18.00 Rt.	736.308	736.389
F	2009.924	18.00 Rt.	736.283	736.363
G	2019.924	18.00 Rt.	736.258	736.330
H	2029.924	18.00 Rt.	736.233	736.293
I	2039.924	18.00 Rt.	736.208	736.253
J	2049.924	18.00 Rt.	736.183	736.210
North Abutment	2056.424	18.00 Rt.	736.158	736.161

**BEAM ①**

Location	Station	Offset	Theoretical Grade Elevations	Theoretical Grade Elevations Adjusted For Dead Load Deflection
South Abutment	1944.105	15.00 Lt.	736.510	736.510
A	1954.105	15.00 Lt.	736.485	736.509
B	1964.105	15.00 Lt.	736.505	736.551
C	1974.105	15.00 Lt.	736.556	736.620
D	1984.105	15.00 Lt.	736.608	736.683
E	1994.105	15.00 Lt.	736.659	736.740
F	2004.105	15.00 Lt.	736.710	736.790
G	2014.105	15.00 Lt.	736.761	736.833
H	2024.105	15.00 Lt.	736.812	736.870
I	2034.105	15.00 Lt.	736.863	736.903
J	2044.105	15.00 Lt.	736.914	736.932
North Abutment	2050.605	15.00 Lt.	736.949	736.949

**BEAM ④**

Location	Station	Offset	Theoretical Grade Elevations	Theoretical Grade Elevations Adjusted For Dead Load Deflection
South Abutment	1947.279	3.00 Rt.	736.705	736.705
A	1957.279	3.00 Rt.	736.680	736.704
B	1967.279	3.00 Rt.	736.655	736.701
C	1977.279	3.00 Rt.	736.630	736.694
D	1987.279	3.00 Rt.	736.605	736.681
E	1997.279	3.00 Rt.	736.580	736.651
F	2007.279	3.00 Rt.	736.555	736.635
G	2017.279	3.00 Rt.	736.530	736.602
H	2027.279	3.00 Rt.	736.494	736.553
I	2037.279	3.00 Rt.	736.454	736.493
J	2047.279	3.00 Rt.	736.414	736.430
North Abutment	2053.779	3.00 Rt.	736.388	736.388

**BEAM ②**

Location	Station	Offset	Theoretical Grade Elevations	Theoretical Grade Elevations Adjusted For Dead Load Deflection
South Abutment	1945.163	9.00 Lt.	736.616	736.616
A	1955.163	9.00 Lt.	736.591	736.616
B	1965.163	9.00 Lt.	736.596	736.644
C	1975.163	9.00 Lt.	736.618	736.682
D	1985.163	9.00 Lt.	736.639	736.714
E	1995.163	9.00 Lt.	736.659	736.740
F	2005.163	9.00 Lt.	736.679	736.759
G	2015.163	9.00 Lt.	736.699	736.771
H	2025.163	9.00 Lt.	736.720	736.778
I	2035.163	9.00 Lt.	736.740	736.779
J	2045.163	9.00 Lt.	736.760	736.776
North Abutment	2051.663	9.00 Lt.	736.774	736.774

**BEAM ⑤**

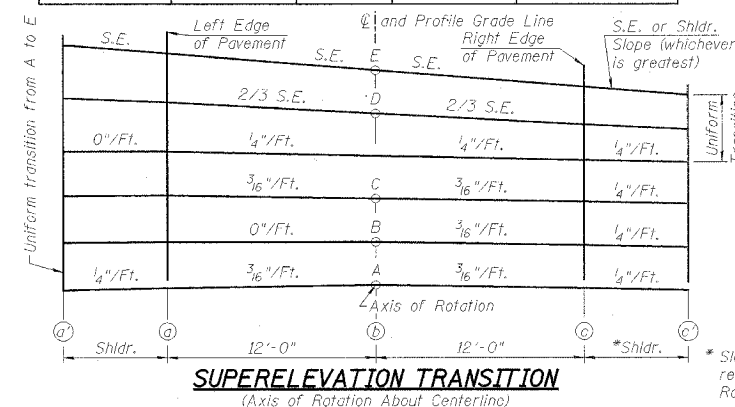
Location	Station	Offset	Theoretical Grade Elevations	Theoretical Grade Elevations Adjusted For Dead Load Deflection
South Abutment	1948.337	9.00 Rt.	736.609	736.609
A	1958.337	9.00 Rt.	736.584	736.608
B	1968.337	9.00 Rt.	736.559	736.605
C	1978.337	9.00 Rt.	736.534	736.597
D	1988.337	9.00 Rt.	736.509	736.584
E	1998.337	9.00 Rt.	736.484	736.565
F	2008.337	9.00 Rt.	736.459	736.539
G	2018.337	9.00 Rt.	736.434	736.506
H	2028.337	9.00 Rt.	736.372	736.430
I	2038.337	9.00 Rt.	736.302	736.341
J	2048.337	9.00 Rt.	736.231	736.247
North Abutment	2054.837	9.00 Rt.	736.186	736.186

**BEAM ③**

Location	Station	Offset	Theoretical Grade Elevations	Theoretical Grade Elevations Adjusted For Dead Load Deflection
South Abutment	1946.221	3.00 Lt.	736.708	736.708
A	1956.221	3.00 Lt.	736.683	736.707
B	1966.221	3.00 Lt.	736.670	736.716
C	1976.221	3.00 Lt.	736.660	736.724
D	1986.221	3.00 Lt.	736.650	736.726
E	1996.221	3.00 Lt.	736.640	736.721
F	2006.221	3.00 Lt.	736.630	736.710
G	2016.221	3.00 Lt.	736.620	736.692
H	2026.221	3.00 Lt.	736.610	736.668
I	2036.221	3.00 Lt.	736.600	736.639
J	2046.221	3.00 Lt.	736.590	736.608
North Abutment	2052.721	3.00 Lt.	736.584	736.584

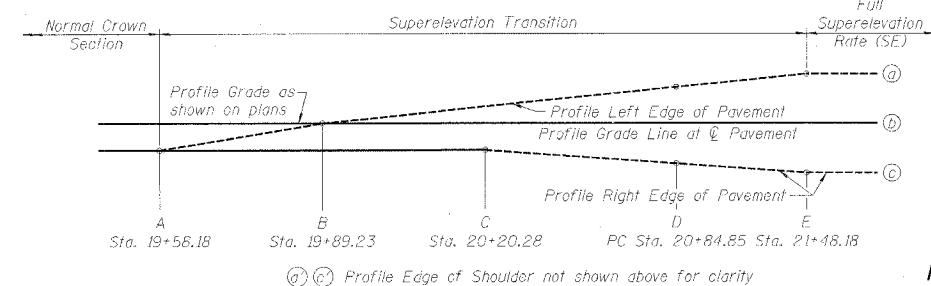
**BEAM ⑥**

Location	Station	Offset	Theoretical Grade Elevations	Theoretical Grade Elevations Adjusted For Dead Load Deflection
South Abutment	1949.395	15.00 Rt.	736.497	736.497
A	1959.395	15.00 Rt.	736.472	736.496
B	1969.395	15.00 Rt.	736.447	736.493
C	1979.395	15.00 Rt.	736.422	736.485
D	1989.395	15.00 Rt.	736.397	736.472
E	1999.395	15.00 Rt.	736.372	736.453
F	2009.395	15.00 Rt.	736.347	736.427
G	2019.395	15.00 Rt.	736.322	736.394
H	2029.395	15.00 Rt.	736.297	736.360
I	2039.395	15.00 Rt.	736.272	736.322
J	2049.395	15.00 Rt.	736.247	736.282
North Abutment	2055.895	15.00 Rt.	736.222	736.247



**SUPERELEVATION TRANSITION**  
(Axis of Rotation About Centerline)

\* Slope is constant 1/4"/ft. until roadway reaches 2/3 S.E. then vary uniformly to meet S.E. Roadway Slope = 1/4"/ft. at Sta. 20+30.53



**TOP OF SLAB ELEVATIONS**  
SECTION 01-00282-00-BR  
ROCKYFORD ROAD over GREEN RIVER  
STA. 20+00 (S.N. 052-3512)  
LEE COUNTY  
WHA # 1154D03