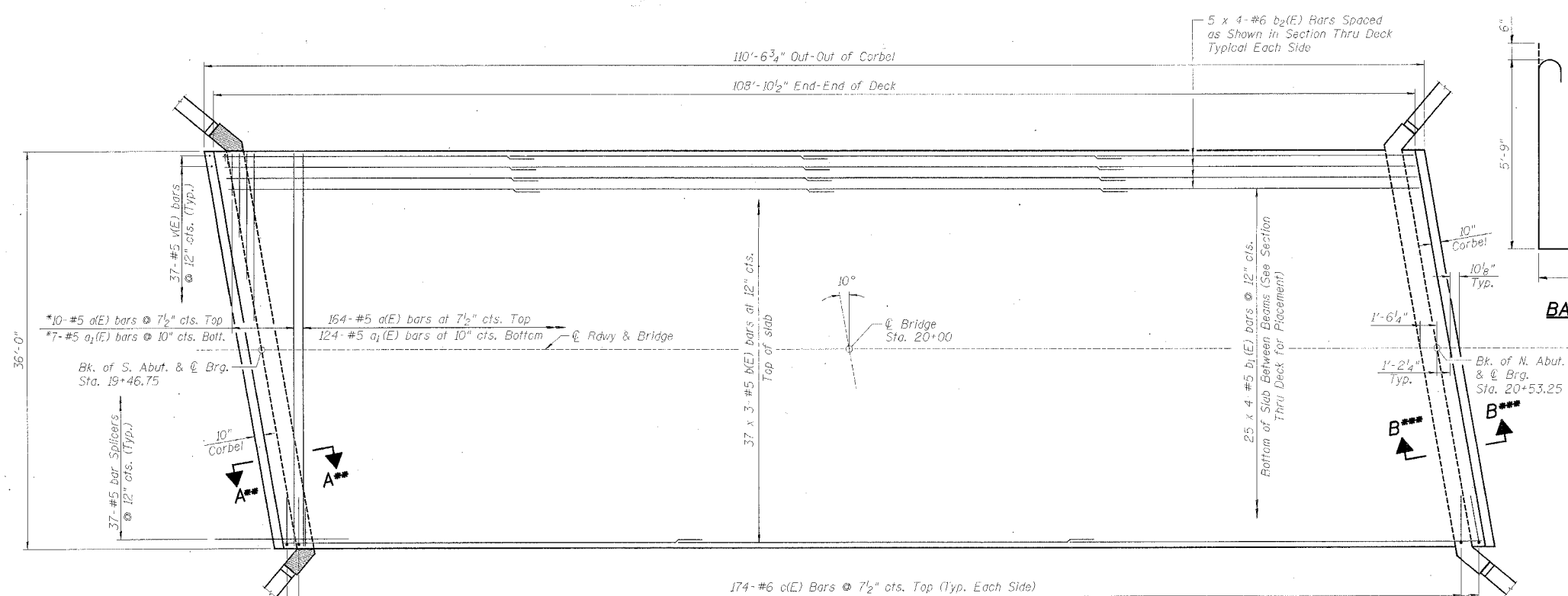


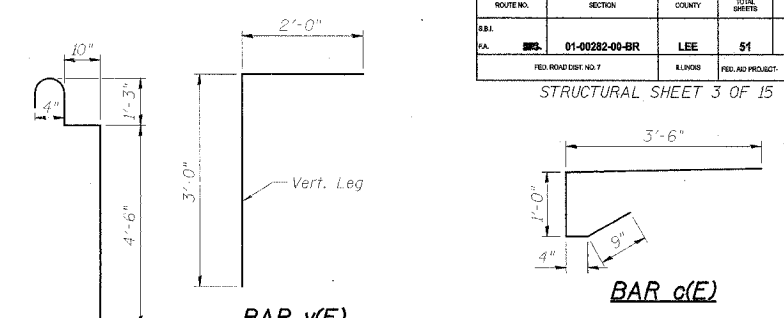
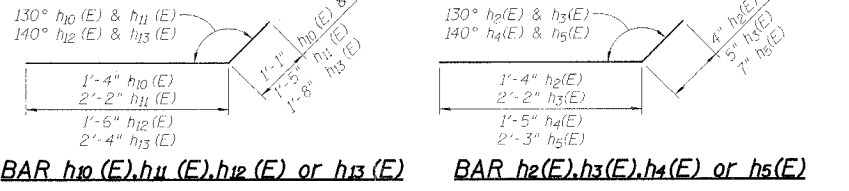
ROUTE NO.	SECTION	COUNTY	TOTAL SHEETS	SHEET NO.
01-00282-00-BR	LEE	51	17	
FED. ROAD DIST. NO. 7		ALIKINS	FED. AID PROJECT	

STRUCTURAL SHEET 3 OF 15



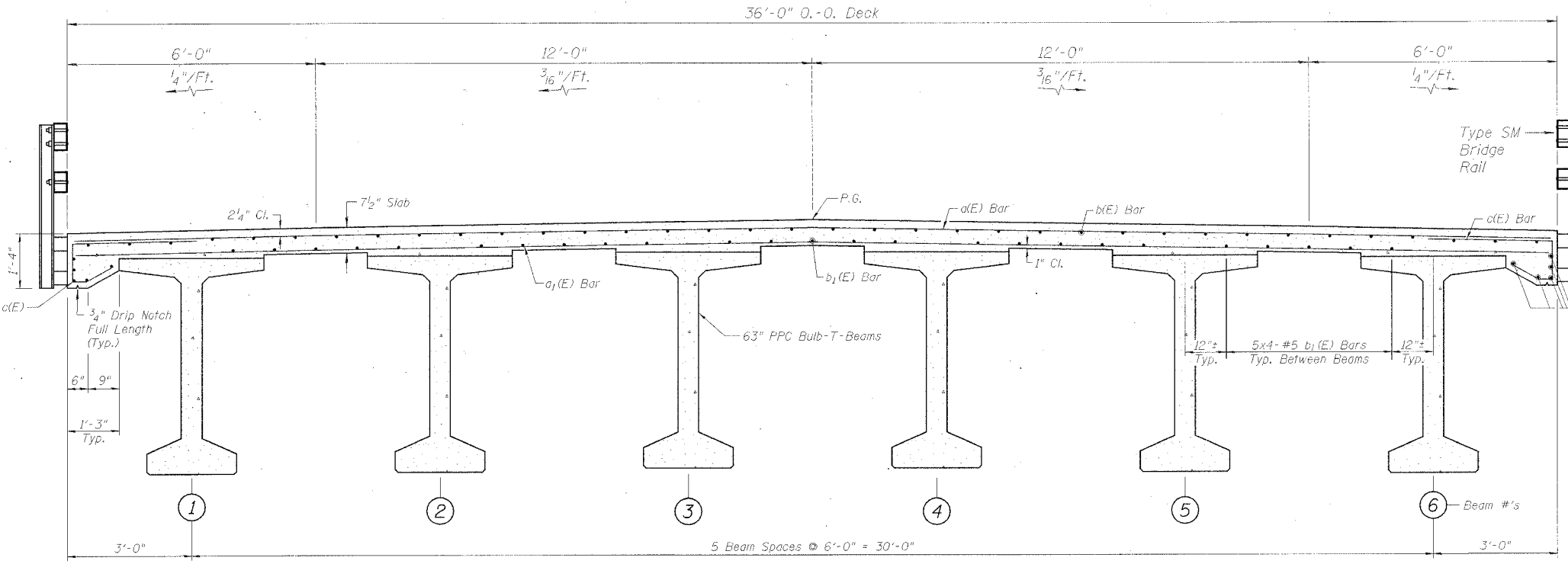
MIN. LAP	SIZE	LAP
#4	1'-8"	
#5	2'-2"	
#6	2'-7"	
#7	3'-5"	
#8	4'-6"	

DECK SLAB



SUPERSTRUCTURE BILL OF MATERIAL

Bar	No.	Size	Length	Shape
a(E)	174	#5	35'-8"	—
a1(E)	131	#5	35'-8"	—
b(E)	111	#5	37'-8"	—
b1(E)	100	#5	28'-9"	—
b2(E)	40	#6	29'-1"	—
c(E)	348	#6	5'-7"	—
h2(E)	7	#5	1'-8"	—
h3(E)	7	#5	2'-7"	—
h4(E)	7	#5	1'-9"	—
h5(E)	7	#5	2'-10"	—
h10(E)	7	#5	2'-5"	—
h11(E)	7	#5	3'-7"	—
h12(E)	7	#5	2'-7"	—
h13(E)	7	#5	4'-0"	—
m(E)	27	#6	36'-2"	—
m1(E)	6	#6	1'-7"	—
m2(E)	15	#6	3'-6"	—
s(E)	19	#4	13'-4"	—
s1(E)	19	#4	16'-6"	—
u(E)	10	#6	4'-1"	—
u1(E)	26	#4	4'-8"	—
u2(E)	26	#4	10'-0"	—
u3(E)	10	#6	5'-1"	—
v(E)	74	#5	5'-0"	—
Concrete Superstructure	Cu. Yd.		159.5	
Reinforcement Bars, Epoxy Coated	Lbs.		26250	
Bar Splicers	Each		74	
Bridge Deck Grooving	Sq. Yd.		411	



SECTION THRU DECK
(Looking Upstation)

NOTES:

- * Order a(E) & a1(E) Bars Full Length. Cut To Fit Skew and Use Remainder of Bars in Opposite End.
- ** See Structural Sheet 4 of 15.
- *** See Structural Sheet 5 of 15.
- Reinforcement Bars Designated (E) shall be Epoxy Coated.
- Hatched Area of South Abutment Wing Corners to be poured after Beams are in place and Deck and Diaphragm have been poured.
- Concrete in Diaphragms and Portion of Wingwall to be Billed with Concrete Superstructures.
- All Exposed Edges Shall Have 3/4" Chamfer Unless Otherwise Noted.
- 37x3-#5 b(E) Bars Etc. Indicates 37 Lines of Bars with 3 Lengths Per Line.
- Reinforcement bars in the top of the deck may be placed with a 1 1/2" minimum clearance in the area of the rail post anchor devices. The studs of the anchor devices shall be placed below the top reinforcement bars and the outermost longitudinal reinforcement bar shall be placed directly above the studs of the rail post anchor device.

SUPERSTRUCTURE SECTION 01-00282-00-BR
ROCKYFORD ROAD over GREEN RIVER
STA. 20+00 (S.N. 052-3512)
LEE COUNTY
 WHA # 1154D03