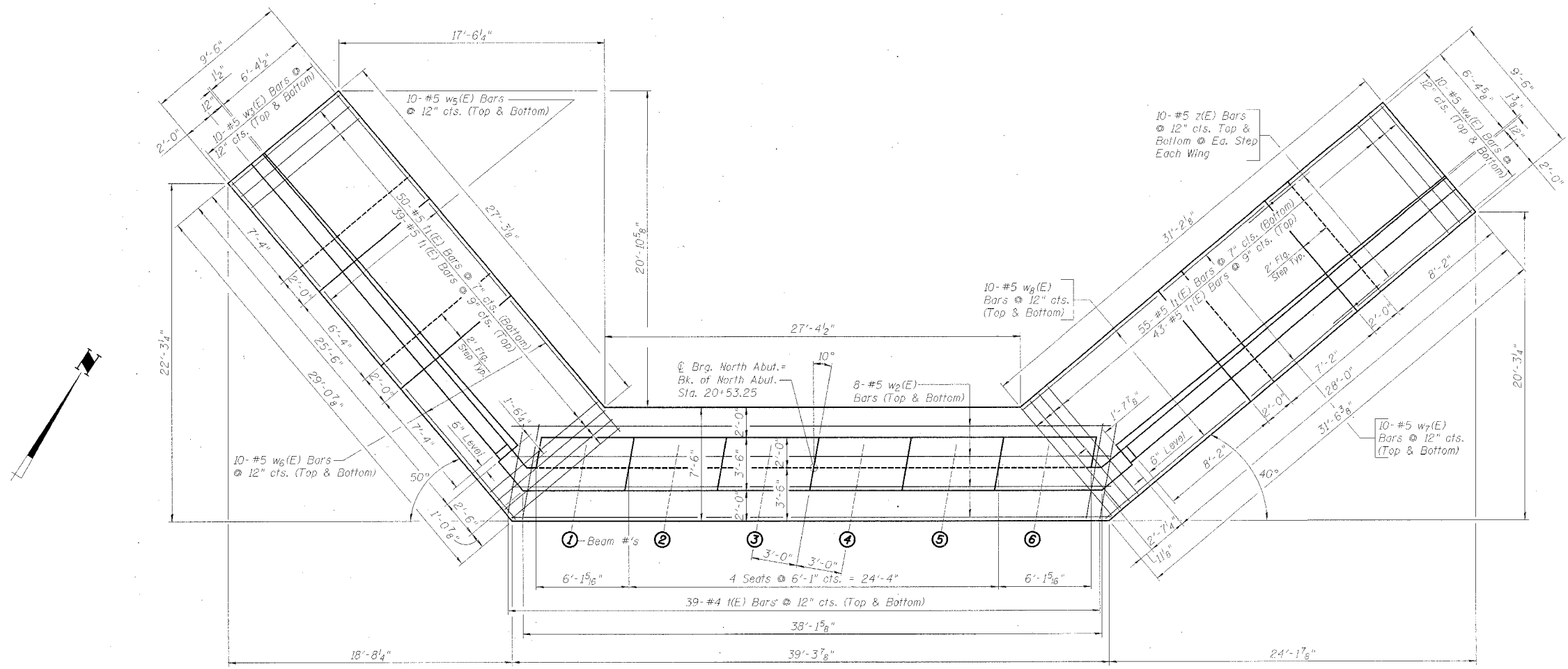


ROUTE NO.	SECTION	COUNTY	TOTAL SHEETS	SHEET NO.
F.A. 01-00282-00-BR	LEE	51	26	
FED. ROAD DIST. NO. 7		ILLINOIS	FED. AID PROJECT-	

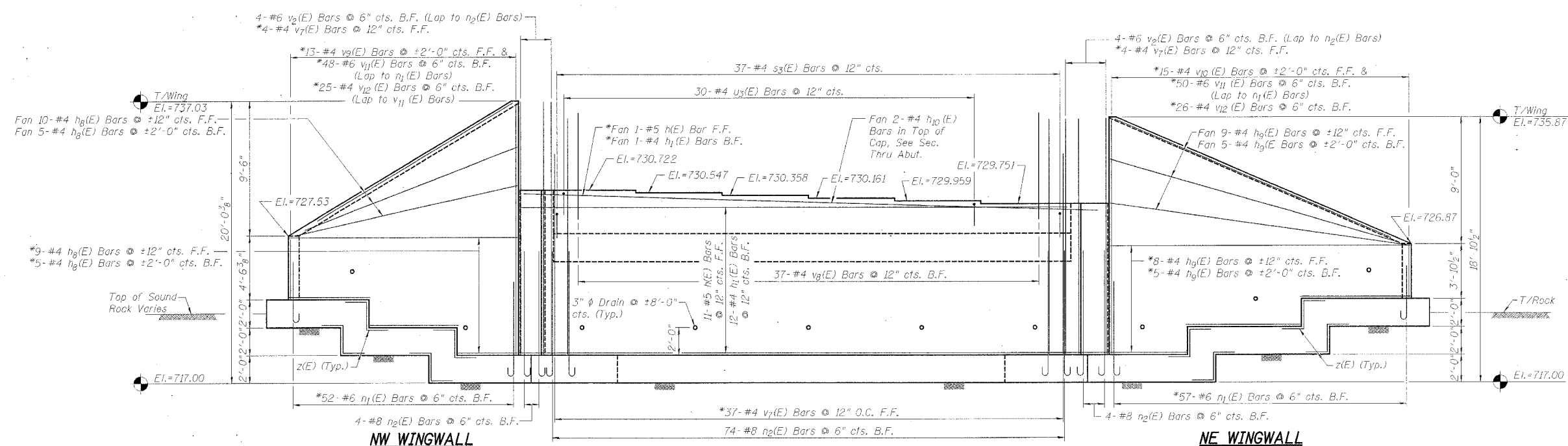
STRUCTURAL SHEET 12 OF 15



PLAN

NOTES:

- * Cut in Field to Fit, If Necessary.
- Footings for Abutment and Wingwalls shall be Paired Monolithically.
- All Corners shall Have a 3/4" Chamfer Unless Otherwise Noted.
- Portion of Footing in Rock shall be Paired Against in Place Rock. No Forming will be Allowed.
- A Deposit of Clean Stone Wrapped in Geotechnical Fabric at Least 2 Feet in Each Direction shall be Placed at the Back of Each Drain Hole in the Abutment and Wingwall.
- See Structural Sheet 13 of 15 for Bill of Material.
- Payment of Porous Granular Backfill shall be Limited to Two Feet Measured Horizontally Behind the Abutment Only.



ELEVATION
(Looking North)

NOTATIONS

F.F.	- FRONT FACE
B.F.	- BACK FACE

MIN. LAP

#4	1'-4"
#5	1'-8"
#6	2'-0"
#7	3'-5"
#8	4'-6"

NORTH ABUTMENT
SECTION 01-00282-00-BR
ROCKYFORD ROAD over GREEN RIVER
STA. 20+00 (S.N. 052-3512)
LEE COUNTY
 WHA # 1154D03