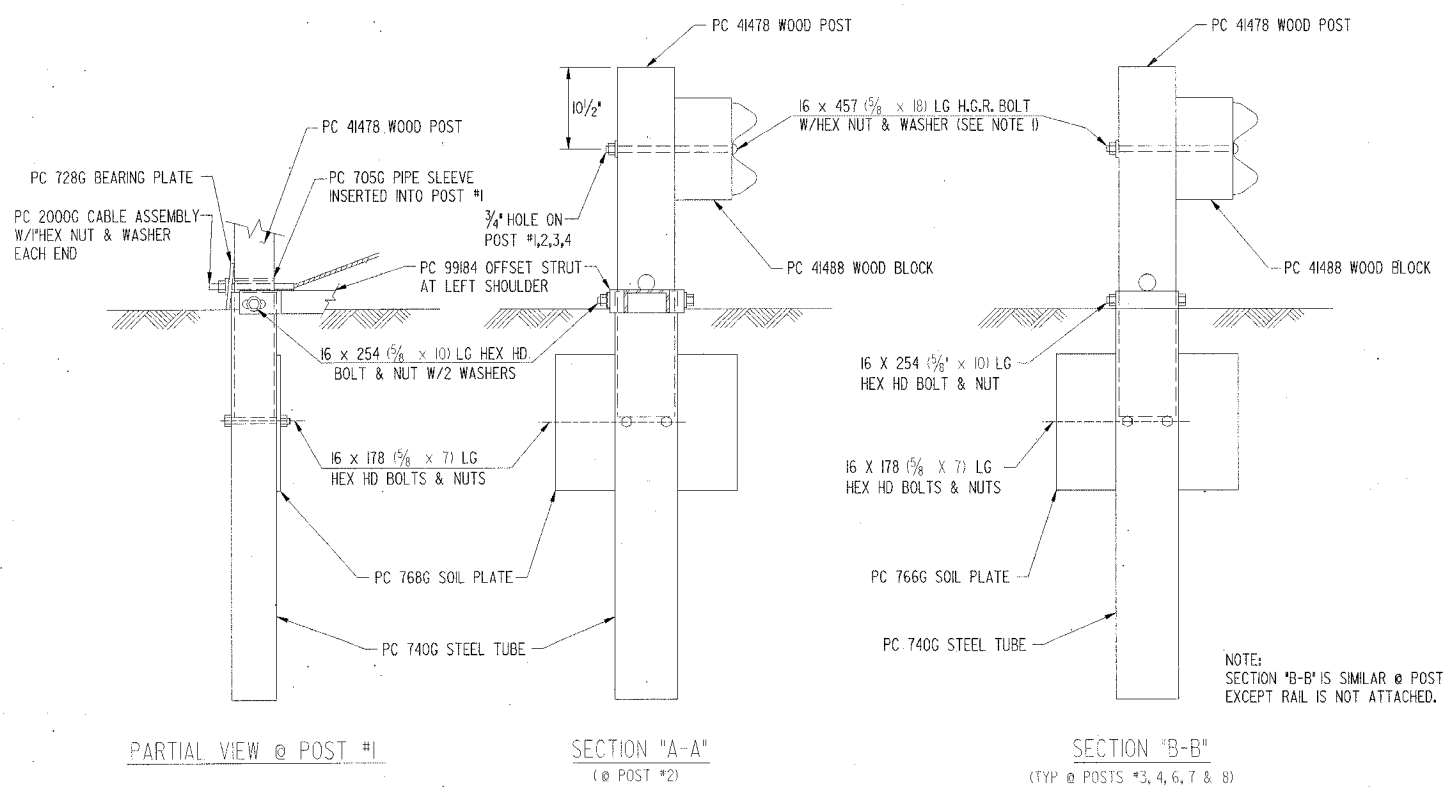
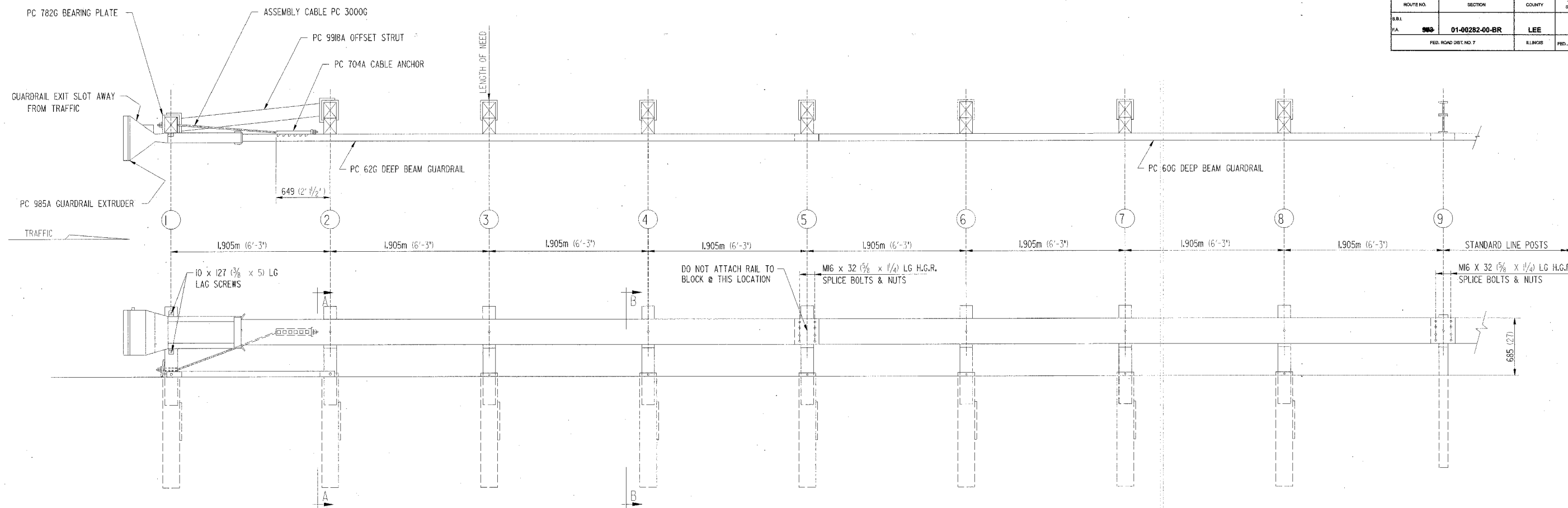


ROUTE NO.	SECTION	COUNTY	TOTAL SHEETS	SHEET NO.
S.R.L. PA. 988	01-00282-00-BR	LEE	51	50
FED. ROAD DIST. NO. 7		KLMGIB	FED. AID PROJECT	



BILL OF MATERIAL

PC	QTY.	DESCRIPTION
60G	1	12/25/6'-3"/S (GUARDRAIL)
62G	1	12/25/6'-3"/S ANC (GUARDRAIL)
704A	1	CABLE ANCHOR BRACKET
705G	1	2" x 5 1/2" PIPE
740G	8	4'-6" TUBE SLEEVE
766G	8	1/4" x 18" x 26" SOIL PLATE
782G	1	5/8" x 5/8" x 8" BEARING PLATE
985A	1	ET-2000 EXTRUDER
3000G	1	CABLE 3/4" x 6'-6"
3300G	11	5/8" WASHER
3340G	47	5/8" HEX NUT
3350G	16	5/8" dia. x 1/4" SPLICE BOLT
3478G	16	5/8" dia. x 7 1/2" HEX HD BOLT
3497G	8	5/8" dia. x 9 1/2" HEX HD BOLT
3580G	7	5/8" dia. x 18" POST BOLT
3900G	2	1" WASHER
3970G	2	1" HEX NUT
41478	8	WD 3'-9" POST 5/2" x 7 1/2"
41488	7	WD BLOCK 1'-2" x 5 1/2" x 7 1/2"
4225G	2	3/8" dia. x 4" LAG SCREW
9918A	1	6'-3" STRUT

NOTES:
 1.) THE 16 (5/8) FLAT WASHER IS USED UNDER THE NUT, BEHIND THE POST ONLY. NO WASHER IS USED AT THE RAIL.
 2.) THE BREAKAWAY POSTS @ LOCATIONS #5, 6, 7 & 8 MAY BE AS SHOWN OR MAY UTILIZE POSTS AS SHOWN IN OPTION 'B' WITHOUT FOUNDATION TUBES. (SEE SYRO DRAWING NO. SS-241.) POSTS @ LOCATIONS #1, 2, 3 & 4 MUST USE FOUNDATION TUBES.
 3.) THE ET-2000 WAS TESTED ON FLAT & LEVEL TERRAIN. IT IS NOT RECOMMENDED ON SLOPES.
 4.) MANUFACTURER SUGGESTS CUSTOMER TO PROVIDE REFLECTORIZER OF TERMINAL.

**STANDARD 93.1 ET-2000 TERMINAL
 OPTION "A"
 SECTION 01-00282-00-BR
 ROCKYFORD ROAD over GREEN RIVER
 STA. 20+00 (S.N. 052-3512)
 LEE COUNTY
 W/A # 1154D03**