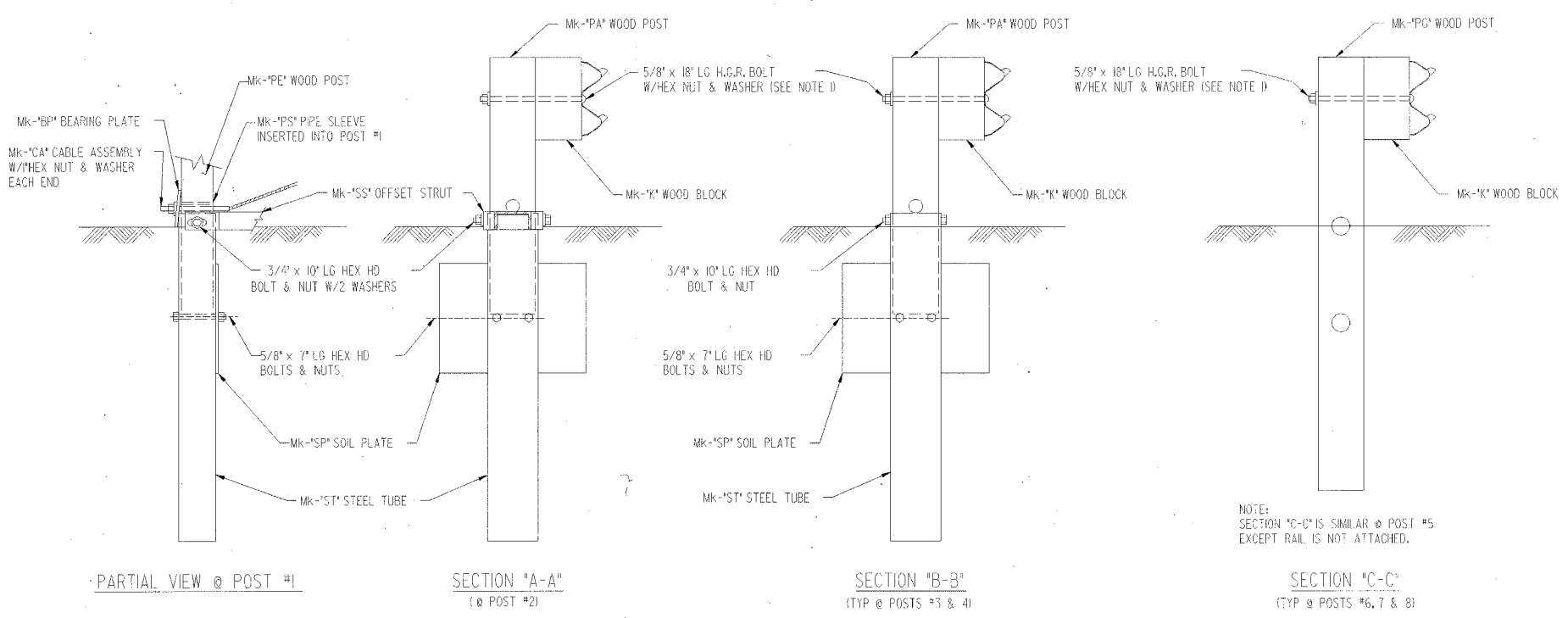
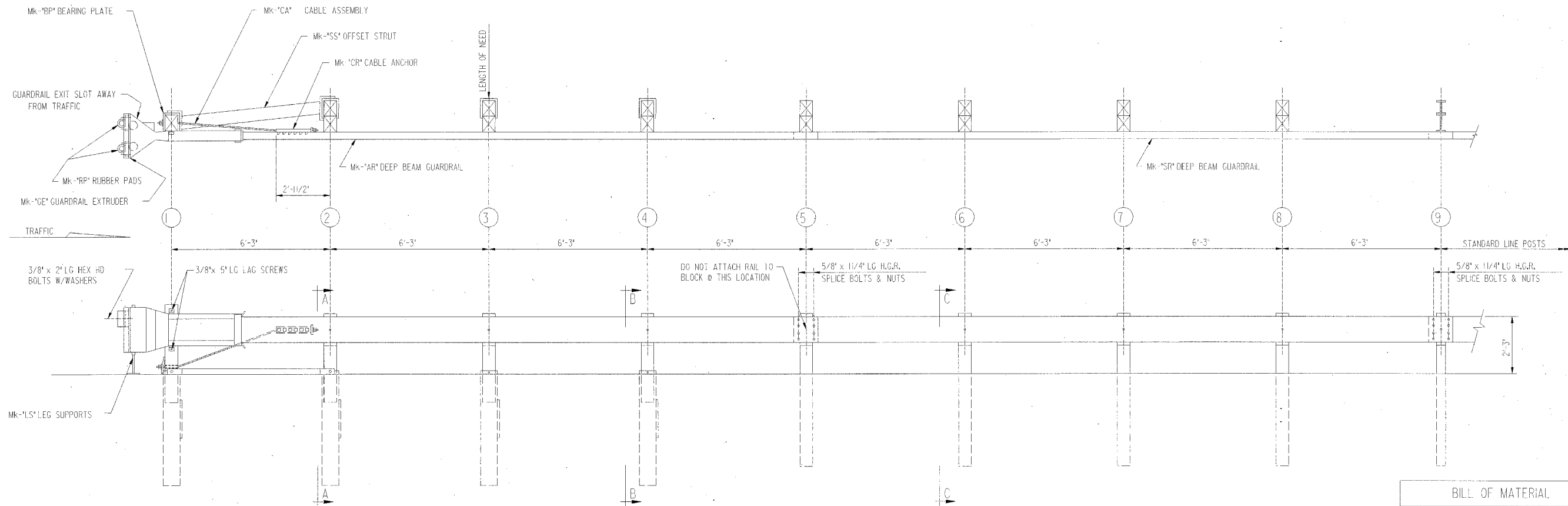


ROUTE NO.	SECTION	COUNTY	TOTAL SHEETS	SHEET NO.
PA 000	01-00282-00-BR	LEE	51	51
FED. ROAD DIST. NO. 7		ILLINOIS	FED. AID PROJECT:	



BILL OF MATERIAL		
MK	QTY	DESCRIPTION
PE	1	WOOD POST
LS	2	LEG SUPPORT
RP	2	RUBBER PAD
SR	1	DEEP BEAM GUARD RAIL (2GA)
AR	1	DEEP BEAM GUARD RAIL (2GA)
PS	1	PIPE SLEEVE
SP	4	SOIL PLATE
K	7	WOOD BLOCK
PG	4	WOOD POST
PA	3	WOOD POST
ST	4	STEEL TUBE
BP	1	BEARING PLATE
CR	1	CABLE ANCHOR
CA	1	CABLE ASSEMBLY
SS	1	OFFSET STRUT (LEFT OR RIGHT)
GE	1	GUARDRAIL EXTRUDER
HARDWARE		
	4	3/4" x 10" HEX HD BOLT
	4	3/4" HEX NUT
	4	3/4" WASHER
	7	5/8" x 18" H.G.R. POST BOLT
	16	5/8" x 11/4" H.G.R. SPLICE BOLT
	8	5/8" x 7" HEX HD BOLT
	16	5/8" H.G.R. NUT
	15	5/8" HEX NUT
	7	5/8" WASHER
	2	3/8" x 5" LAG SCREW
	4	3/8" x 2" HEX HD BOLT
	4	3/8" WASHER
	2	1" HEX NUT
	2	1" WASHER

NOTES:  
 1) THE 5/8" FLAT WASHER IS USED UNDER THE NUT, BEHIND THE POST ONLY. NO WASHER IS USED AT THE RAIL.  
 2) THE BREAKAWAY POSTS @ LOCATIONS #5, 6, 7 & 8 MAY BE AS SHOWN OR MAY UTILIZE POSTS AS SHOWN IN OPTION 'A' WITH FOUNDATION TUBES. (SEE SYRO DRAWING NO. SS-251). POSTS @ LOCATIONS #1, 2, 3 & 4 MUST USE FOUNDATION TUBES.  
 3) THE ET-2000 WAS TESTED ON FLAT & LEVEL TERRAIN. IT IS NOT RECOMMENDED ON SLOPES.  
 4) MANUFACTURER SUGGESTS CUSTOMER TO PROVIDE REFLECTORIZATION OF TERMINAL.

**STANDARD 93.1 ET-2000 TERMINAL**  
**OPTION "B"**  
 SECTION 01-00282-00-BR  
 ROCKYFORD ROAD over GREEN RIVER  
 STA. 20+00 (S.N. 052-3512)  
 LEE COUNTY  
 WHA # 1154D03