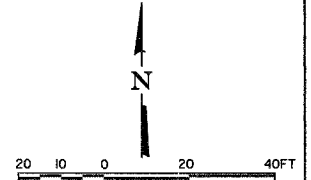


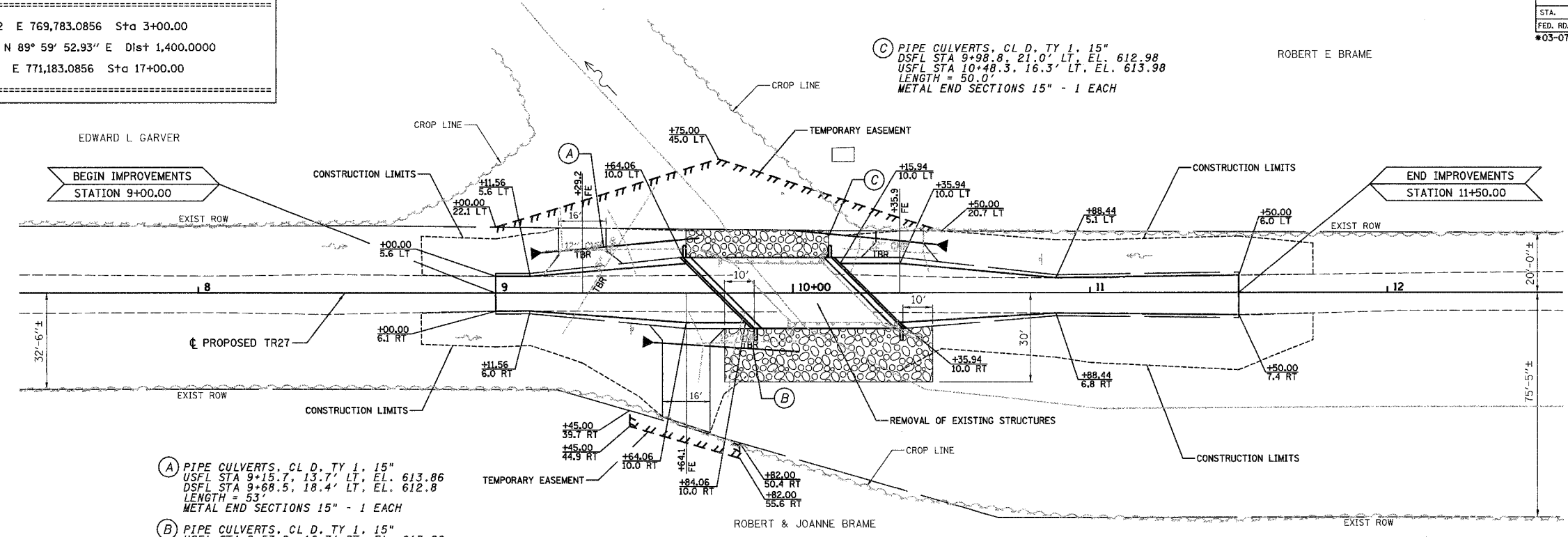
ROUTE NO.	SECTION	COUNTY	TOTAL SHEETS	SHEET NO.
TR 27	*	MACON	16	4
STA.	TO STA.			
FED. RD. DIST. NO. 7	ILLINOIS	PROJECT		
*03-07146-00-BR				



PROPOSED CL ALIGNMENT

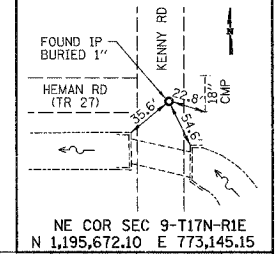
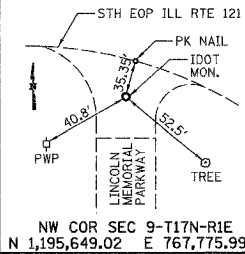
Point D1000 N 1,195,666.1242 E 769,783.0856 Sta 3+00.00
 Course from D1000 to D1001 N 89° 59' 52.93" E Dist 1,400.0000
 Point D1001 N 1,195,666.1721 E 771,183.0856 Sta 17+00.00

SECTION 4, T17N, R1E, 3RD PM



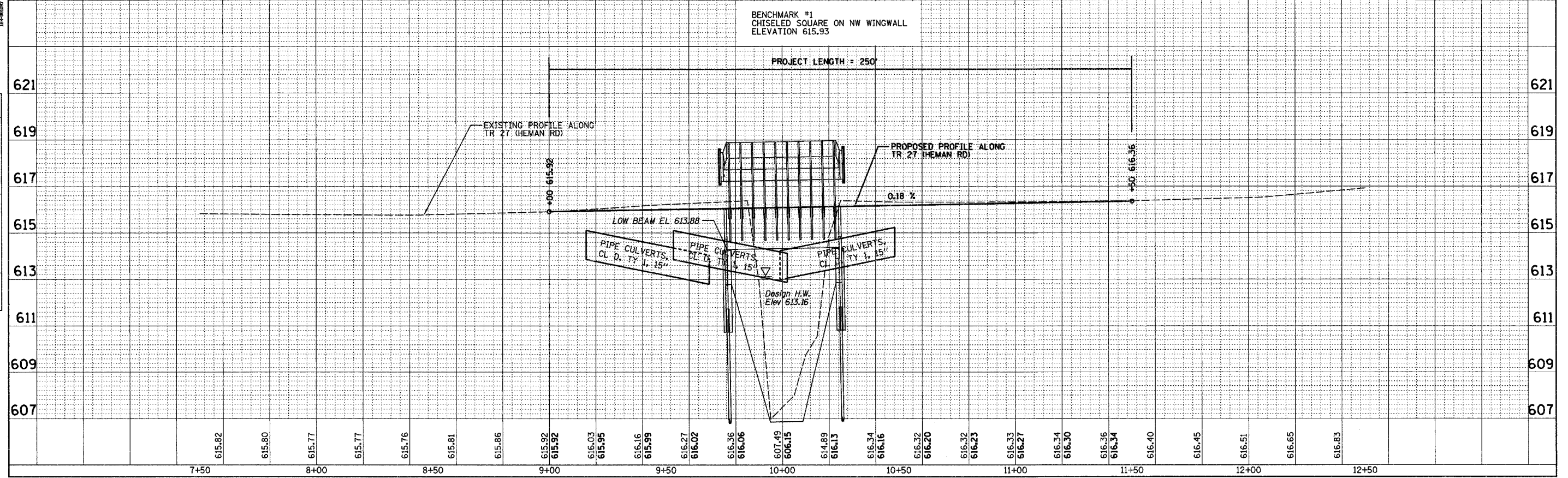
- (A) PIPE CULVERTS, CL D. TY 1, 15"
 USFL STA 9+15.7, 13.7' LT, EL. 613.86
 DSFL STA 9+68.5, 18.4' RT, EL. 612.8
 LENGTH = 53'
 METAL END SECTIONS 15" - 1 EACH
- (B) PIPE CULVERTS, CL D. TY 1, 15"
 USFL STA 9+53.2, 16.7' RT, EL. 613.86
 DSFL STA 10+02.1, 19.9' RT, EL. 612.88
 LENGTH = 49'
 METAL END SECTIONS 15" - 1 EACH
- (C) PIPE CULVERTS, CL D. TY 1, 15"
 DSFL STA 9+98.8, 21.0' LT, EL. 612.98
 USFL STA 10+48.3, 16.3' LT, EL. 613.98
 LENGTH = 50.0'
 METAL END SECTIONS 15" - 1 EACH

SECTION 9, T17N, R1E, 3RD PM



BENCHMARK #1
 CHISELED SQUARE ON NW WINGWALL
 ELEVATION 615.93

PROJECT LENGTH = 250'



PLAN

DATE	
BY	
CHECKED	
DESIGNED	
NOTED	
NO.	

DECATUR
 (317) 422-8444
 CHICAGO
 (773) 714-9080

CHASTAIN
 & ASSOCIATES, LLP
 CONSULTING ENGINEERS

PROFILE

DATE	
BY	
CHECKED	
DESIGNED	
NOTED	
NO.	