

RTE.	SECTION	COUNTY	TOTAL SHEETS	SHEET NO.
T.R. 112	*	SHELBY	9	1
PROJECT				

* 02-19114-00-BR

STATE OF ILLINOIS
DEPARTMENT OF TRANSPORTATION
 PLANS FOR PROPOSED
 HIGHWAY BRIDGE REPLACEMENT
 AND REHABILITATION PROGRAM
 PROJECT NO. BROS-173(138)
 T.R. 112 OVER MUD CREEK
 SECTION 02-19114-00-BR
 SHELBY COUNTY
 JOB NO. C-95-340-05

INDEX OF SHEETS

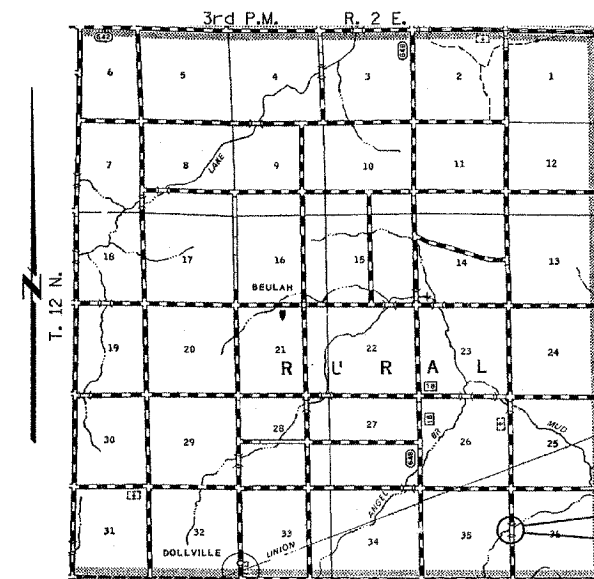
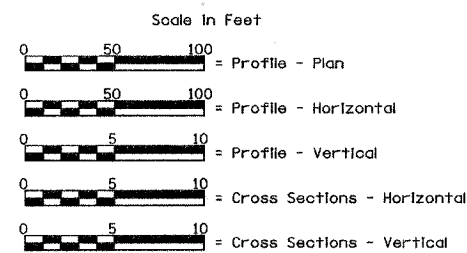
- 1 - TITLE SHEET
- 2 - SUMMARY OF QUANTITIES, DETAILS, & TYPICAL SECTIONS
- 3 - PLAN & PROFILE
- 4 - GENERAL PLAN & ELEVATION
- 5 - SUPERSTRUCTURE
- 6 - RAILING
- 7 - ABUTMENTS
- 8 & 9 - CROSS SECTIONS

STANDARDS

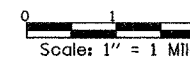
STANDARD	515001-02
STANDARD	635006-02
STANDARD	702001-05
STANDARD	BLR 21-6

DESCRIPTION

NAME PLATE FOR BRIDGES
 REFLECTOR AND TERMINAL MARKER PLACEMENT
 TRAFFIC CONTROL DEVICES
 TYPICAL APPLICATION OF TRAFFIC CONTROL DEVICES
 FOR CONSTRUCTION ON RURAL LOCAL HIGHWAYS



Length of Section - 465.00 Feet = 0.088 Miles



Land Sections - 35 & 36
 Land Quarter Section - N.E. & N.W.
 Functional Classification: Local (Rural)
 A.D.T. - 125(1999)
 A.D.T. - 50(2023)
 30 M.P.H. Design Speed

EXISTING STRUCTURE: SINGLE SPAN TIMBER DECK ON STEEL STRINGERS, CLOSED TIMBER ABUTMENTS AND WINGWALLS. ±40'-0" BK.-BK. ABUTMENTS, ±21'-0" CLEAR DECK WIDTH, ±0° SKEW.
 EXISTING STRUCTURE NO. 087-3340

PROPOSED STRUCTURE: SINGLE SPAN REINFORCED CONCRETE DECK BEAM (27") BRIDGE ON OPEN CONCRETE ABUTMENTS. 57'-6" BK.-BK. ABUTMENTS, 24'-0" CLEAR DECK WIDTH, TYPE S1 RAILING. 20° SKEW RT. FORWARD.
 PROPOSED STRUCTURE NO. 087-3536

PROJECT BEGINS
 Sta. 8+00
 PROJECT ENDS
 Sta. 12+65



Christopher P. Kohlen 9/12/05
 Expiration: 11/30/2005

APPROVED:	<i>[Signature]</i> 09-08-2005 COUNTY ENGINEER
APPROVED:	<i>[Signature]</i> 09-08-2005 ROAD COMMISSIONER
PASSED:	<i>[Signature]</i> 12/20/2005 DISTRICT FIVE ENGINEER OF LOCAL ROADS & STREETS
Released For Bid Based on Listed Items:	<i>[Signature]</i> 04-20-2005 DEPUTY DIRECTOR OF HIGHWAYS, REGION THREE ENGINEER
STATE OF ILLINOIS DEPARTMENT OF TRANSPORTATION	

TOLL FREE
 "JOINT UTILITY LOCATION INFORMATION FOR EXCAVATORS"
 (U.L.I.E.) TELEPHONE NUMBER
 1-800-892-9123

CONTRACT NO. 91352

ALLEN HENDERSON & ASSOCIATES, INC.

CONSULTING CIVIL AND STRUCTURAL ENGINEERS SPRINGFIELD, IL. PHONE: (217) 544-8033