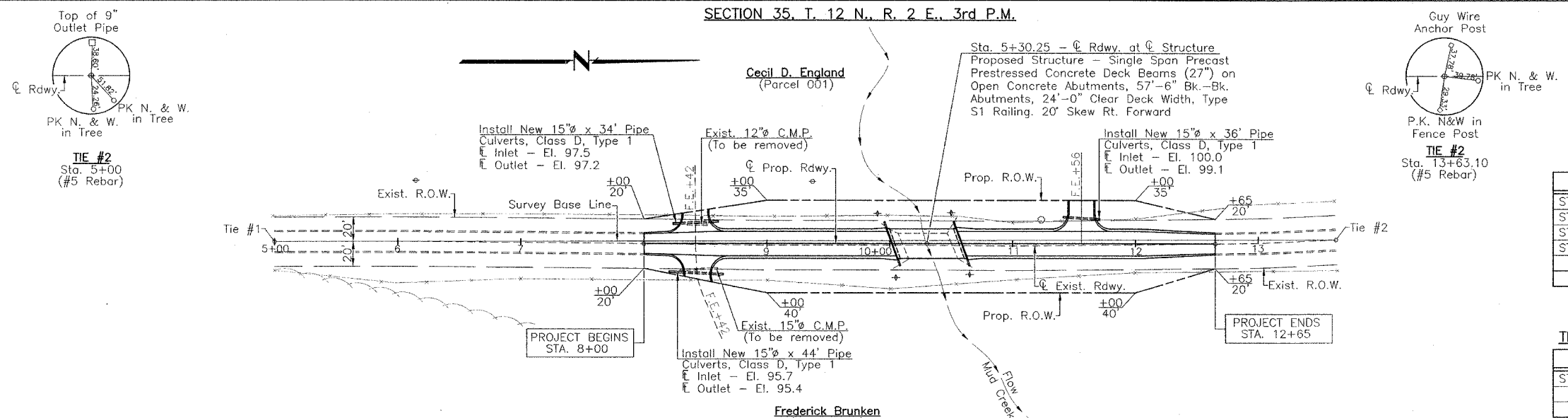


| RTE. | SECTION | COUNTY | TOTAL SHEETS | SHEET NO. |
|---------|---------|--------|--------------|-----------|
| T.R.112 | * | SHELBY | 9 | 3 |
| PROJECT | | | | |

* 02-19114-00-BR

SECTION 35, T. 12 N., R. 2 E., 3rd P.M.



SCHEDULE DITCH CHECKS

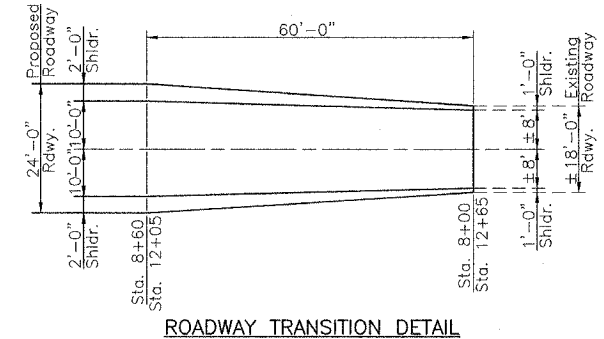
| LOCATION | EACH |
|----------------------|----------|
| STA. 9+90 24.5' LT. | 1 |
| STA. 10+05 27.5' RT. | 1 |
| STA. 10+50 25' LT. | 1 |
| STA. 10+65 25' RT. | 1 |
| TOTAL | 4 |

SCHEDULE TREE REMOVAL (OVER 15 UNITS DIAMETER)

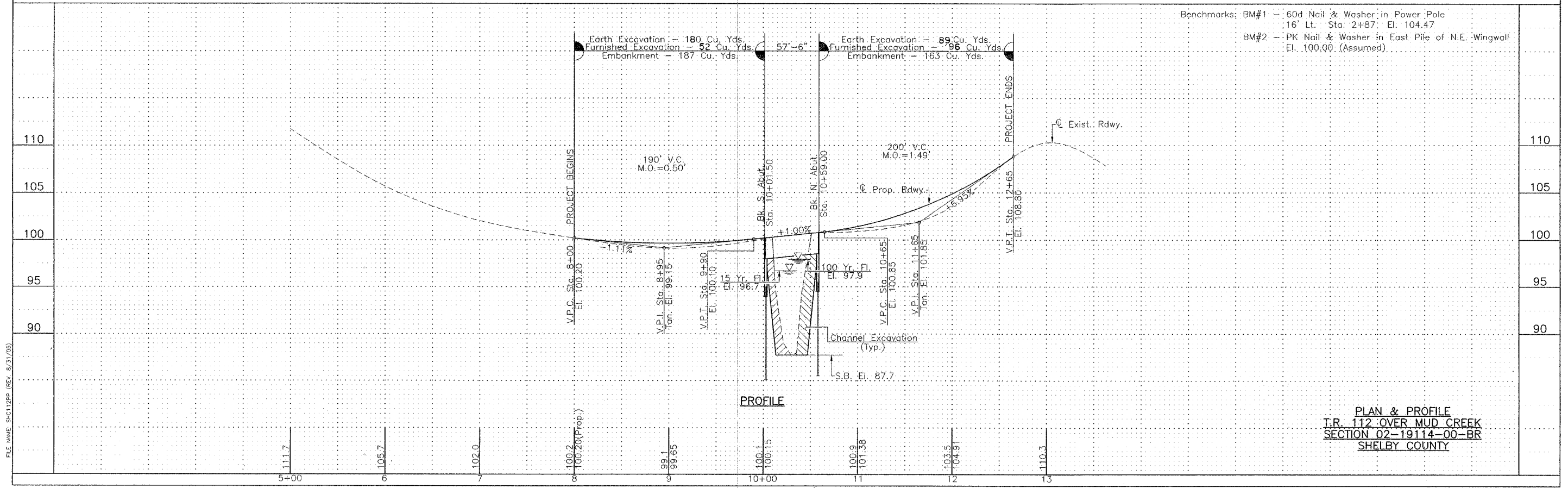
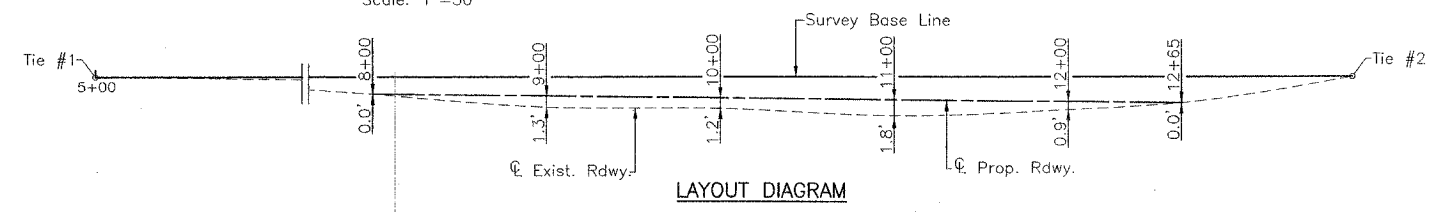
| LOCATION | UNITS(DIAMETER) |
|--------------------|-----------------|
| STA. 11+28 20' LT. | 18 |
| TOTAL | 18 |

Seeding - Sta. 8+00 to Sta. 12+65 R.O.W. to R.O.W. - 0.5 Acre
 Temporary Seeding - Sta. 8+00 to Sta. 12+65 R.O.W. to R.O.W. - 100 Pounds

UTILITIES
 Shelby Electric Cooperative
 North Route 128
 Shelbyville, Illinois
 Consolidated Communications
 121 South 17th Street
 Mattoon, Illinois 61938
 217-235-3311



SECTION 36, T. 12 N., R. 2 E., 3rd P.M.



PLAN & PROFILE
 T.R. 112 OVER MUD CREEK
 SECTION 02-19114-00-BR
 SHELBY COUNTY