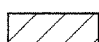
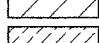
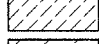
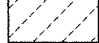
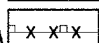


DATE _____
 BY _____
 SURVEYED _____
 PLAN _____
 ALIGNED _____
 CHECKED _____
 R.T. OF WAY CHECKED _____
 NO. _____

REMOVAL LEGEND

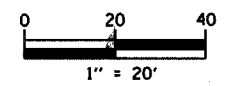
-  PAVEMENT REMOVAL
-  DRIVEWAY PAVEMENT REMOVAL
-  TREE REMOVAL (AC)
-  GUARDRAIL REMOVAL
-  TREE REMOVAL

MANHOLE SCHEDULE (SEE NOTE)

STATION	MAN RECONST (EACH)	MAN RECONST (EACH)	MAN ADJ (EACH)
107+69.31	105+29.00	108+50.00	
6.00 LT	33.38 LT	6.00 LT	
MH-A	MH	MH-A	
5.00		5.00	
T1-CL		T1-CL	
624.01	613.75	628.04	
TOTAL	1	1	1

NOTE:
 EXISTING MANHOLES OR MANHOLES PLACED IN PREVIOUS CONTRACT ARE TO BE ADJUSTED OR RECONSTRUCTED TO RIM ELEVATIONS SHOWN IN BOLD.

F.A.I. RTE.	SECTION	COUNTY	TOTAL SHEETS	SHEET NO.
6998	99-00209-02-PV	VERMILION	72	16
STA. 103+00	TO STA. 109+00			
FED. ROAD DIST. NO. ILLINOIS	FED. AID PROJECT-			
CONTRACT NO.: 91356				

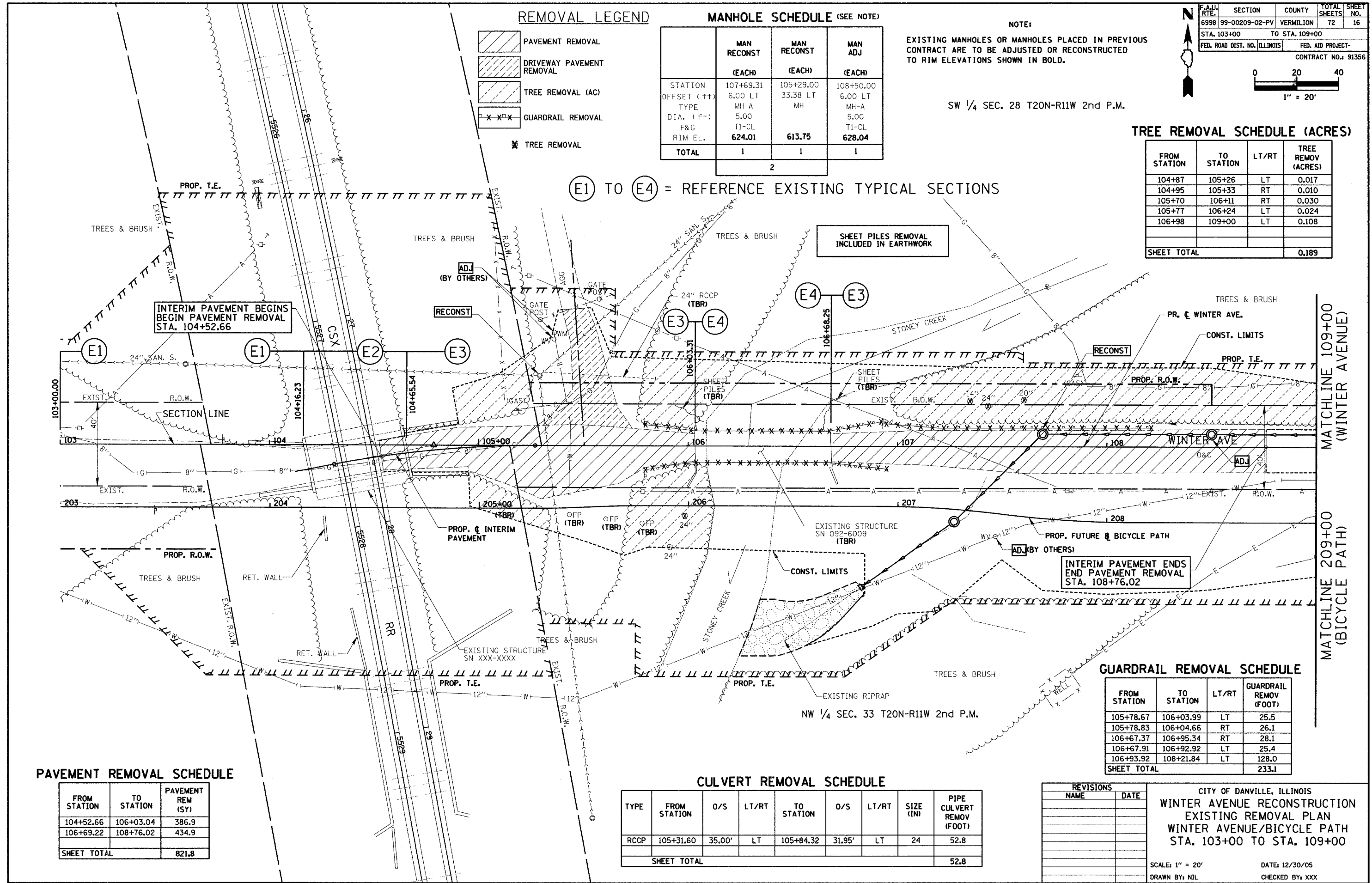


SW 1/4 SEC. 28 T20N-R11W 2nd P.M.

TREE REMOVAL SCHEDULE (ACRES)

FROM STATION	TO STATION	LT/RT	TREE REMOV (ACRES)
104+87	105+26	LT	0.017
104+95	105+33	RT	0.010
105+70	106+11	RT	0.030
105+77	106+24	LT	0.024
106+98	109+00	LT	0.108
SHEET TOTAL			0.189

ⓔ1 TO ⓔ4 = REFERENCE EXISTING TYPICAL SECTIONS



INTERIM PAVEMENT BEGINS BEGIN PAVEMENT REMOVAL STA. 104+52.66

SHEET PILES REMOVAL INCLUDED IN EARTHWORK

INTERIM PAVEMENT ENDS END PAVEMENT REMOVAL STA. 108+76.02

PAVEMENT REMOVAL SCHEDULE

FROM STATION	TO STATION	PAVEMENT REM (SY)
104+52.66	106+03.04	386.9
106+69.22	108+76.02	434.9
SHEET TOTAL		821.8

CULVERT REMOVAL SCHEDULE

TYPE	FROM STATION	O/S	LT/RT	TO STATION	O/S	LT/RT	SIZE (IN)	PIPE CULVERT REMOV (FOOT)
RCCP	105+31.60	35.00'	LT	105+84.32	31.95'	LT	24	52.8
SHEET TOTAL								52.8

GUARDRAIL REMOVAL SCHEDULE

FROM STATION	TO STATION	LT/RT	GUARDRAIL REMOV (FOOT)
105+78.67	106+03.99	LT	25.5
105+78.83	106+04.66	RT	26.1
106+67.37	106+95.34	RT	28.1
106+67.91	106+92.92	LT	25.4
106+93.92	108+21.84	LT	128.0
SHEET TOTAL			233.1

REVISIONS	NAME	DATE

CITY OF DANVILLE, ILLINOIS
 WINTER AVENUE RECONSTRUCTION
 EXISTING REMOVAL PLAN
 WINTER AVENUE/BICYCLE PATH
 STA. 103+00 TO STA. 109+00

SCALE: 1" = 20'
 DRAWN BY: NIL
 DATE: 12/30/05
 CHECKED BY: XXX