

F.A.P. RTE.	SECTION	COUNTY	TOTAL SHEETS	SHEET NO.
777	10(B-1, BR-2)	MONTGOMERY	104	2
STA.		TO STA.		
FED. ROAD DIST. NO.	ILLINOIS	FED. AID PROJECT		

GENERAL NOTES

- THICKNESS OF RESURFACING: THE THICKNESS OF THE REINFORCED CONCRETE OVERLAY SHOWN ON THE PLANS IS THE NOMINAL THICKNESS. DEVIATIONS FROM THE NOMINAL THICKNESS WILL BE PERMITTED WHEN SUCH DEVIATIONS OCCUR DUE TO IRREGULARITIES IN THE EXISTING BRIDGE DECK SURFACE ON WHICH THE OVERLAY IS PLACED.
- ALL ELEVATIONS SHOWN ON THE PLANS ARE ESTABLISHED FROM U.S.G.S. MEAN SEA LEVEL DATUM.
- THE LOCATIONS OF EXISTING WATER MAINS, GAS MAINS, SEWERS, ELECTRIC POWER LINES, TELEPHONE LINES AND OTHER UTILITIES AS SHOWN ON THE PLANS ARE BASED ON CAREFUL FIELD INVESTIGATION AND THE BEST INFORMATION AVAILABLE, BUT THEY ARE NOT GUARANTEED. IT SHALL BE THE RESPONSIBILITY OF THE CONTRACTOR TO ASCERTAIN THEIR EXACT LOCATION FROM THE UTILITY COMPANIES AND BY FIELD INSPECTION.
- WHERE SECTION OR SUBSECTION MONUMENTS ARE ENCOUNTERED, THE ENGINEER SHALL BE NOTIFIED BEFORE SUCH MONUMENTS ARE REMOVED. THE CONTRACTOR SHALL PROTECT AND CAREFULLY PRESERVE ALL PROPERTY MARKERS AND MONUMENTS UNTIL THE OWNER, AN AUTHORIZED SURVEYOR, OR AGENT, HAS WITNESSED OR OTHERWISE REFERENCED THEIR LOCATION.
- EXISTING ROAD SIGNS THAT CONFLICT WITH STAGE CONSTRUCTION TRAFFIC PATTERNS SHALL BE COVERED OR REMOVED UNTIL NORMAL TRAFFIC PATTERNS ARE RE-ESTABLISHED.
- ACCESS TO ALL ENTRANCES AND SIDE ROADS SHALL BE MAINTAINED AT ALL TIMES.
- GUARDRAIL MARKERS SHALL NOT BE ATTACHED TO THE RAIL OF THE PROPOSED "TRAFFIC BARRIER TERMINAL TYPE 1 SPECIAL" RAIL ELEMENTS. MARKERS IN THE AREA OF THE TRAFFIC BARRIER TERMINAL TYPE 1 SPECIAL SHALL BE MOUNTED ON THE TOP OF THE NEAREST POST.
- ANY REFERENCE TO A STANDARD IN THESE PLANS SHALL BE INTERPRETED TO MEAN THE EDITION AS INDICATED BY THE SUB-NUMBERS LISTED IN THE INDEX OF SHEETS, OR THE COPY OF THE STANDARD INCLUDED IN THESE PLANS.

APPLICATION RATES

SEEDING FERTILIZER NUTRIENTS (NIT:PHOS:POT)	90: 90: 90: lbs./acre
MULCH RATE	2.0 tons/acre
AGRICULTURAL GROUND LIMESTONE	2.0 tons/acre
ALL AGGREGATE ITEMS	2.05 tons/cu. yd.
STONE DUMPED RIPRAP	1.75 tons/cu. yd.
BITUMINOUS MATERIALS (PRIME COAT)	0.00038 tons/sq. yd.
BITUMINOUS MATERIALS (PRIME COAT) ON AGG	0.001425 tons/sq. yd.
AGGREGATE (PRIME COAT)	0.01 tons/sq. yd.
BITUMINOUS CONCRETE BASE COURSE WIDENING	112 lbs/sq. yd. inch
BITUMINOUS CONCRETE BINDER COURSE	112 lbs/sq. yd. inch
BITUMINOUS CONCRETE SURFACE COURSE	112 lbs/sq. yd. inch
BITUMINOUS SHOULDERS SUPERPAVE	112 lbs/sq. yd. inch
INCIDENTAL BITUMINOUS SURFACE	112 lbs/sq. yd. inch

- IN ADDITION TO FIELD SURVEYS AND AERIAL SURVEYS, PLAN DIMENSIONS AND DETAILS RELATIVE TO THE EXISTING FACILITIES HAVE BEEN TAKEN FROM EXISTING PLANS AND ARE SUBJECT TO CONSTRUCTION VARIATIONS. IT SHALL BE THE RESPONSIBILITY OF THE CONTRACTOR TO VERIFY SUCH DIMENSIONS AND DETAILS IN THE FIELD. SUCH VARIATIONS SHALL NOT BE A CAUSE FOR ADDITIONAL COMPENSATION DUE TO A CHANGE IN THE SCOPE OF WORK. HOWEVER, THE CONTRACTOR WILL BE PAID FOR THE QUANTITY ACTUALLY FURNISHED AT THE UNIT PRICE BID FOR THE WORK
- ALL ENTRANCES AND SIDE ROAD BUTT JOINTS SHOWN IN THE PLANS ARE TO BE APPROVED BY THE ENGINEER PRIOR TO PLACEMENT.

MIXTURE REQUIREMENTS

MIXTURE USE(S):	IL RTE. 185	IL RTE. 185	IL RTE. 185 (ROADWAY)	IL RTE. 185 (SHOULDERS)	MISC. (ENTRANCES)
	BIT CONC SURF CSE SUPERPAVE	LEVELING BINDER	BIT BINDER COURSE SUPERPAVE	BIT BASE COURSE SUPERPAVE	INCID BIT SURF
AC/PG	PG 64-22	PG 64-22	PG 64-22	PG 58-22	PG 64-22
RAP % (MAX)	15%	20%	20%	15%	15%
DESIGN AIR VOIDS	4.0% @ N DESIGN = 50	4.0% @ N DESIGN = 50	4.0% @ N DESIGN = 50	2.0% @ N DESIGN = 50	4.0% @ N DESIGN = 50
MIXTURE COMPOSITION (GRADATION MIXTURE)	IL 9.5 OR 12.5	IL 9.5	IL 19.0	IL 19.0	IL 9.5 OR 12.5
VOLUMETRIC REQ'S	-	-	-	-	-
FRICTION AGGREGATE	MIX "C"	N/A	N/A	N/A	MIX "C"

MIXTURE USE(S):	T.R. 318 (UP TO RADIUS RETURN)	T.R. 318 (UP TO RADIUS RETURN)
	BIT CONC SURF CSE SUPERPAVE	BIT BASE COURSE SUPERPAVE
AC/PG	PG 64-22	PG 58-22
RAP % (MAX)	15%	15%
DESIGN AIR VOIDS	4.0% @ N DESIGN = 50	2.0% @ N DESIGN = 50
MIXTURE COMPOSITION (GRADATION MIXTURE)	IL 9.5 OR 12.5	IL 19.0
VOLUMETRIC REQ'S	-	-
FRICTION AGGREGATE	MIX "C"	N/A

INDEX OF SHEETS

- 1 COVER SHEET
- 2 GENERAL NOTES
- 3 - 8 SUMMARY OF QUANTITIES
- 9 - 11 TYPICAL SECTIONS
- 12 - 22 SCHEDULE OF QUANTITIES
- 23 CROSS TIES AND BENCHMARKS
- 24 - 28 PLAN AND PROFILE SHEETS
- 29 - 38 MAINTENANCE OF TRAFFIC & STAGING SHEETS
- 39 TEMPORARY BRIDGE TRAFFIC SIGNAL LOOP DETAIL
- 40 - 41 TRAFFIC CONTROL SIGNING DETAIL SHEETS
- 42 TEMPORARY ACCESS DRIVE DETAIL
- 43 - 45 STAGE CONSTRUCTION CROSS SECTIONS
- 46 - 52 STRUCTURE PLANS - BAYOU CREEK
- 53 - 75 STRUCTURE PLANS - SHOAL CREEK
- 76 STAGE CONSTRUCTION SHEET - SHOAL CREEK
- 77 - 80 STORMWATER PREVENTION POLLUTION PLAN
- 81 SUPERELEVATION DETAIL SHEET
- 82 INTERSECTION ELEVATION DETAIL SHEET
- 83 - 84,84A MISCELLANEOUS DETAIL SHEETS
- 85 GUARDRAIL DETAIL SHEET
- 86- 95 CROSS SECTIONS (IL ROUTE 185)
- 96 - 104 CROSS SECTIONS (TR 318)

104a. CONCRETE PARAPET SLABFORMING OPTION DETAILS

STANDARDS

000001-04	631031-05	701321-08
001001	635006-02	701326-02
001006	635011-01	702001-05
280001-02	666001	704001-02
420401-05	667101	720001
482001	701001-01	720006
515001-02	701006-02	720011
542301	701011-01	729001
542311	701201-02	780001-01
542401	701301-02	781001-02
601101	701306-01	886001
609006-02	701311-02	886006
630001-05		
630301-03		
631011-02		

DISTRICT SIX		
EXAMINED	January 6	20 06
OPERATIONS ENGINEER		
EXAMINED	Jan 5	20 06
PROGRAM IMPLEMENTATION ENGINEER		
EXAMINED	January 9	20 06
PROGRAM DEVELOPMENT ENGINEER		

Rev. 3-3-06

ILLINOIS DEPARTMENT OF TRANSPORTATION

GENERAL NOTES

FAP 777 (IL RTE. 185)
SECTION 10(B-1, BR-2)
MONTGOMERY COUNTY

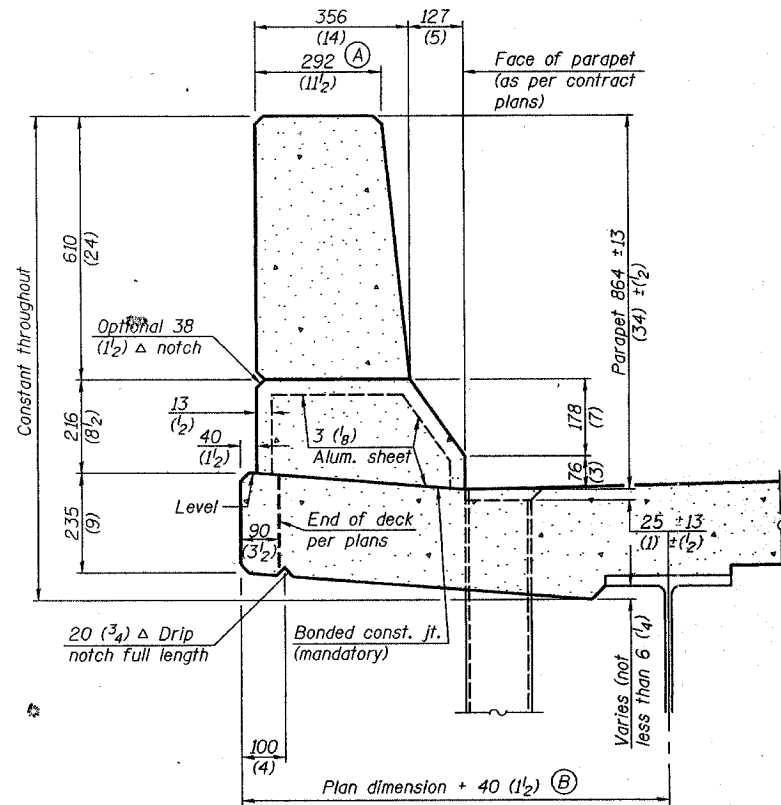
SCALE: DATE 3/29/04

DRAWN BY CHECKED BY

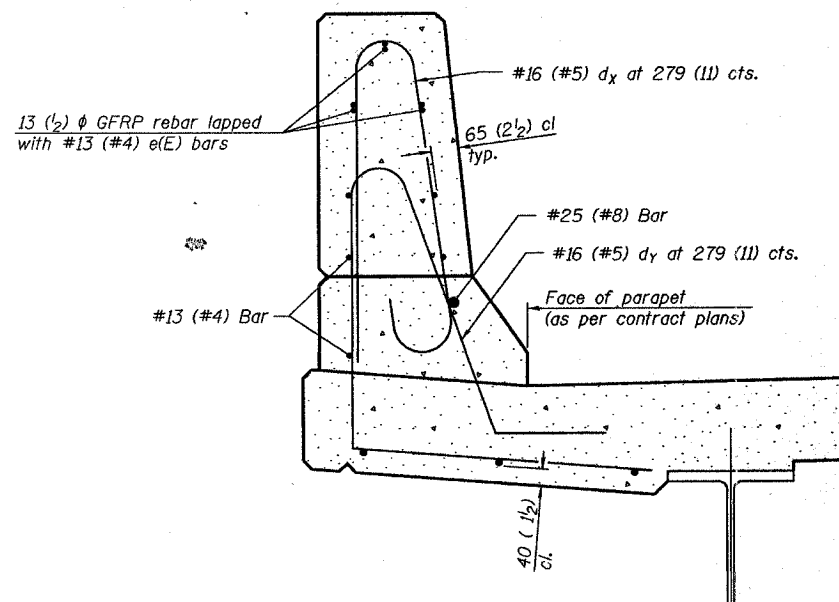
STATE OF ILLINOIS
DEPARTMENT OF TRANSPORTATION

ROUTE NO.	SECTION	COUNTY	TOTAL SHEETS	SHEET NO.	SHEET NO.
FAP 777	10(B-1), BR-2	MONTGOMERY	104	1042	
FED. ROAD DIST. NO. 7	ILLINOIS	FED. AID PROJECT			

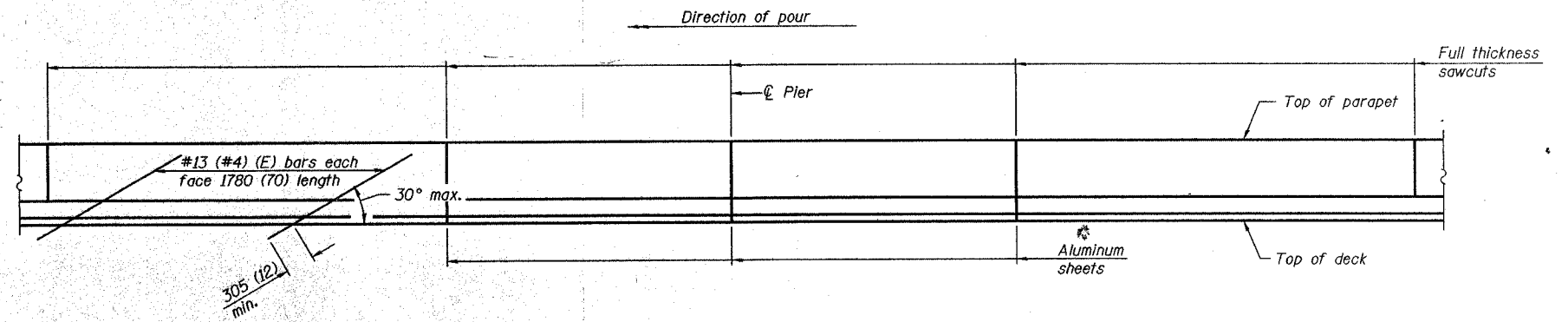
Contract #



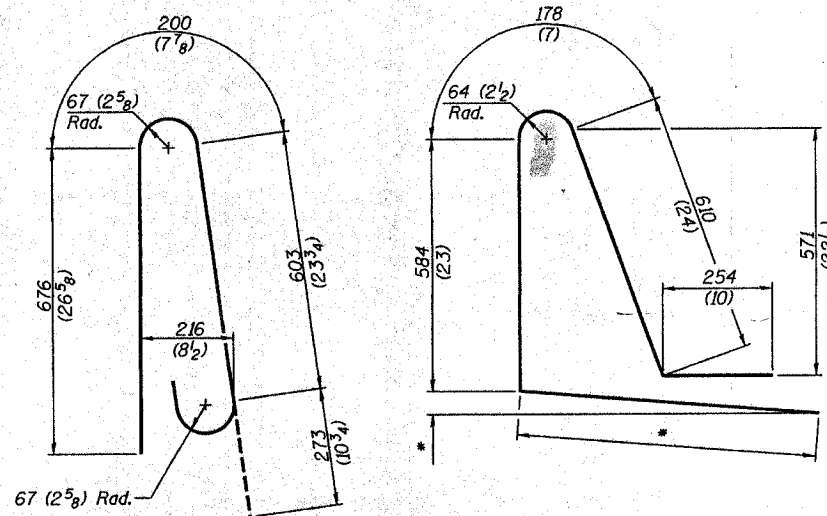
SECTION
(Showing dimensions)



SECTION
(Showing required reinforcement)

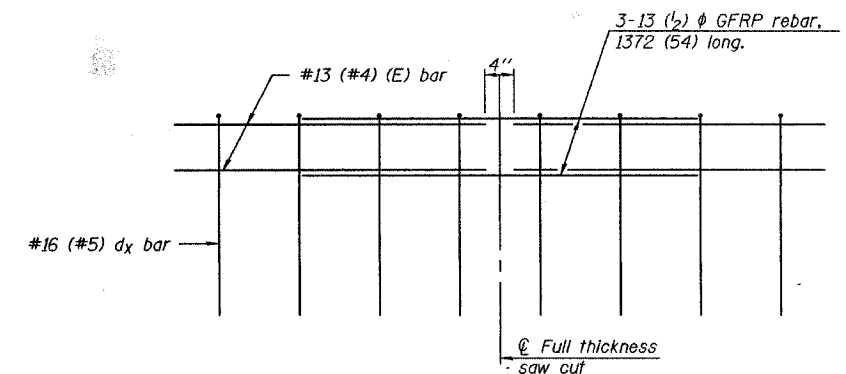


ELEVATION
(Showing parapet joints and typical stiffening reinforcement between joints)



BAR dx(e)

BAR dy(e)
* Per contract plans



GFRP REBAR STIFFENING DETAIL
(Place as shown in parapet section)

GENERAL NOTES
All dimensions shall remain the same as shown on contract plans, except dimensions A and B which are to be revised as shown to provide additional clearance. Additional concrete needed to revise dimension A and B = 0.0422 m³/m (0.165 cu. yds./ft.) of parapet. Place aluminum sheet in curb portion at and near piers. Full thickness saw cut at all other locations. Adjust/add joint locations to maintain 3 to 6 meter (10 to 20 foot) spacing.

**CONCRETE PARAPET
SLIPFORMING OPTION**

Added Sheet 3-3-06